



Metro

Los Angeles County  
Metropolitan Transportation  
Authority  
One Gateway Plaza  
3rd Floor Board Room  
Los Angeles, CA

## Board Report

---

**File #:** 2015-0766, **File Type:** Oral Report / Presentation

**Agenda Number:** 28.

---

**SYSTEM SAFETY, SECURITY AND OPERATIONS COMMITTEE  
JUNE 18, 2015**

**Operations Employee of the Month.**

# June Operations Employees of the Month



Arnold Fortaleza  
Bus Transportation



Lawrence Sears  
Wayside Systems Custodial  
Services

# Operations Employees of the Month

## Bus Transportation

- Arnold Fortaleza
- Bus Operator
- Division 8

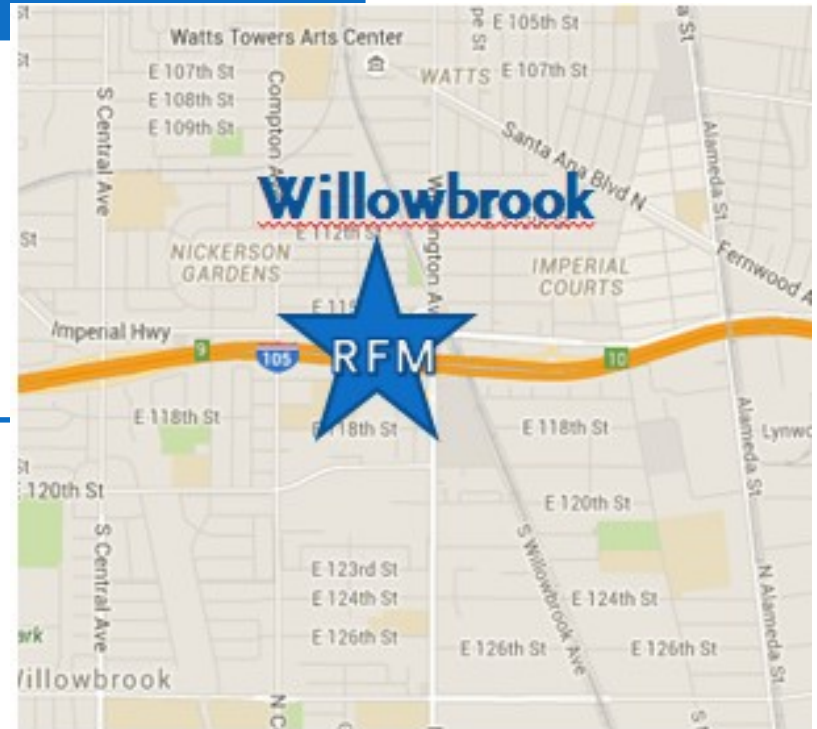


Metro

# Operations Employees of the Month

## Rail Maintenance

- Lawrence Sears
- Custodian
- Rail Facilities Maintenance



Metro



# System Safety, Security and Operations Report



**Metro**

**System Safety, Security and Operations  
Committee**

**June 18, 2015**

Security

Safety

On-Time  
Performance

Reliability

On-Board Monitors and  
Operator Barriers

Division Health Fair

Division High-  
Achievers

• Division 1, 8 and 15

Additional Classroom  
Training



# June Operations Updates

System Cleanliness



Background  
Inspection Score



Initiatives



Rail

Bus



Metro

# Background

Cleanline  
SS  
Inspections

## Vehicle Inspection Program (Bus and Rail)

- Average 4 - 25 random rail cars and buses are inspected monthly at each Division
- Problem areas are brought up to Supervisors for immediate action

## Station Inspections

- Employees ride the Metro Rail System station to station conducting inspections
- Photos are taken of problem areas for immediate corrective action

## Training

- In July 2014, all newly hired and existing Rail Supervision was trained on Metro's cleanliness expectations



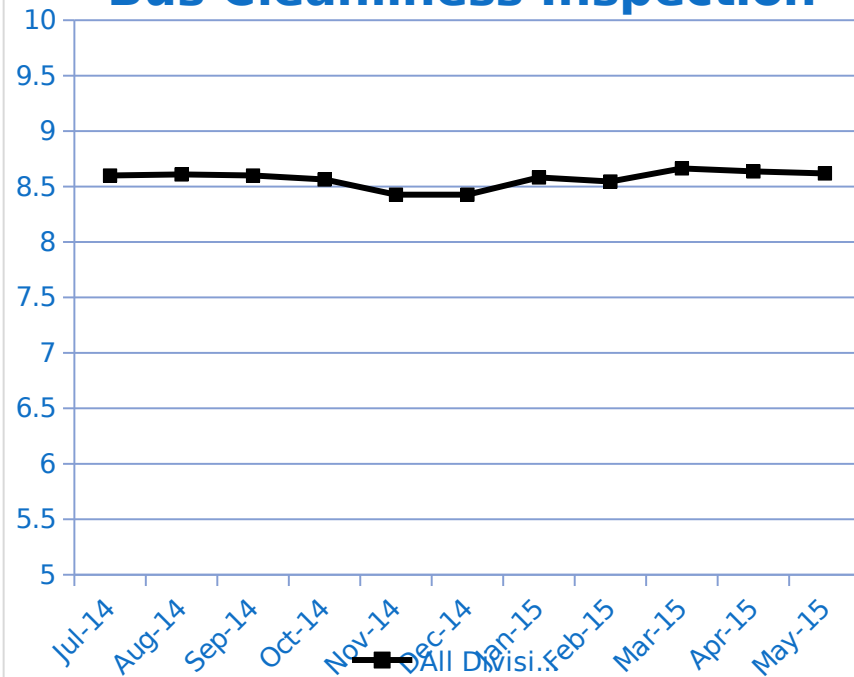
Metro



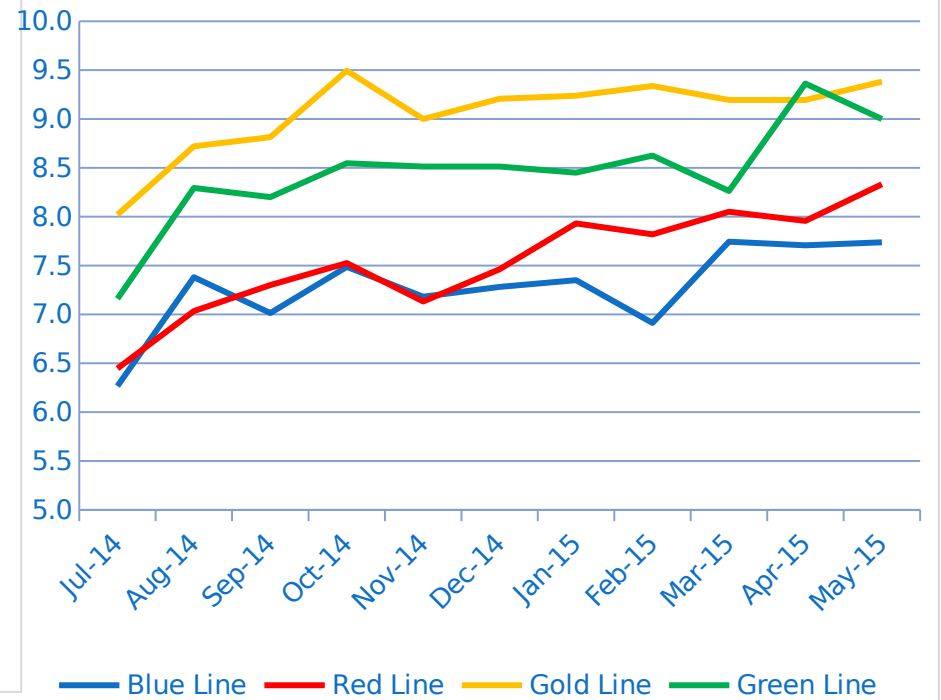
# Inspection Scores

Bus and  
Rail  
Cleanlines  
s FY15

## Bus Cleanliness Inspection



## Rail Cleanliness Inspection



# Initiatives

## Cleanline SS Programs

### Bus Anti-Graffiti Program

- Replaced 65,000 damaged seat inserts (yearly)
- Replaced 50,000 window sacrificial guards (yearly)
- Remove and clean all graffiti and slap tags (daily)

### Expanded Cleaning Programs

- Mopping floors daily
- Wiping down bus operators area, dashes and ledges daily
- Wipe down bus interior panels and A/C vents
- Window water spot removal program

### Rail Stations

- Aggressive platform and station pressure washing program
- Stainless steel sacrificial film
- Actively monitor service contracts for compliance

