

Metro

Los Angeles County
Metropolitan Transportation
Authority
One Gateway Plaza
3rd Floor Board Room
Los Angeles, CA



Metro

Board Report

File #: 2015-1101, **File Type:** Oral Report / Presentation

Agenda Number: 35.

**SYSTEM SAFETY, SECURITY AND OPERATIONS COMMITTEE
NOVEMBER 19, 2015**

RECEIVE oral report on **System Safety, Security and Operations.**



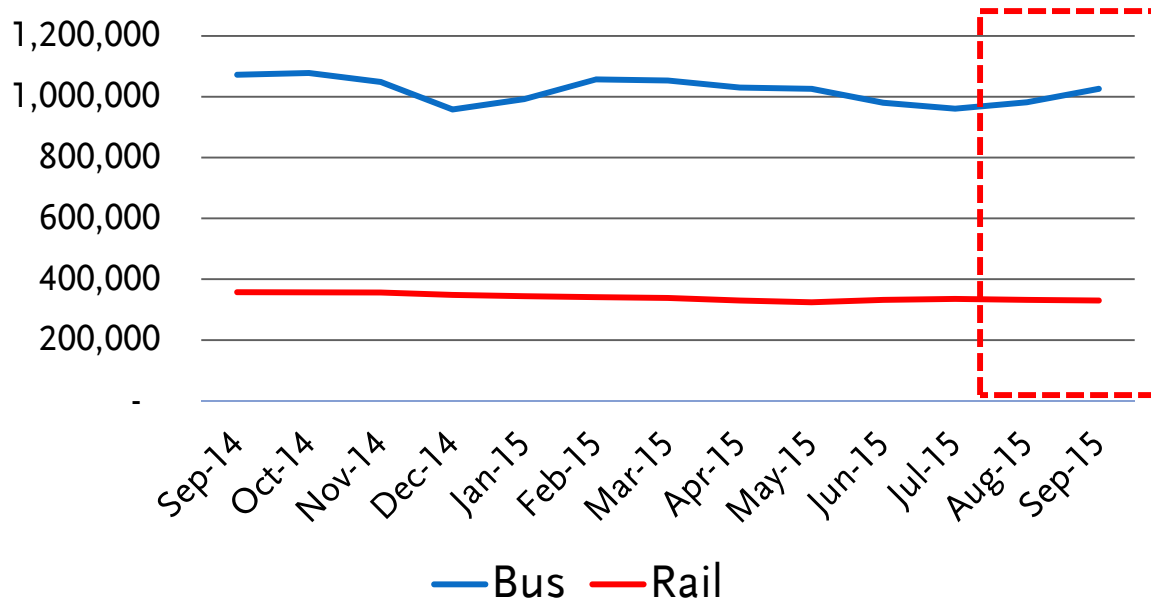
Metro Bus & Rail Performance FY16 Quarter 1 November 19, 2015



Metro

Bus & Rail Average Weekday Ridership

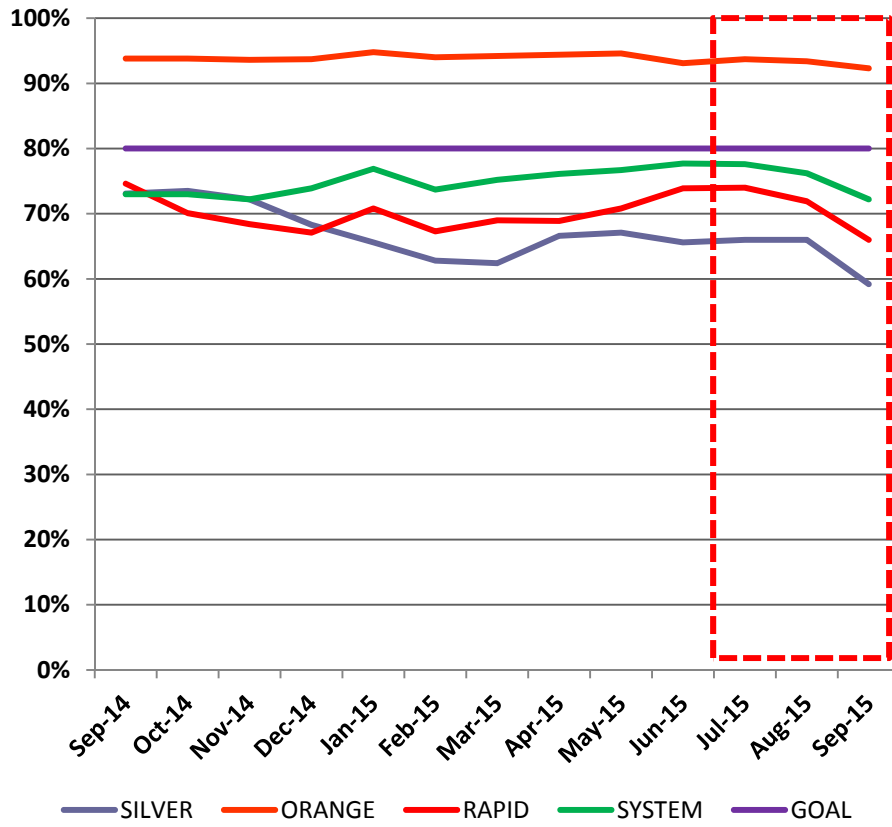
Bus & Rail Average Weekday Ridership/
Monthly Estimates



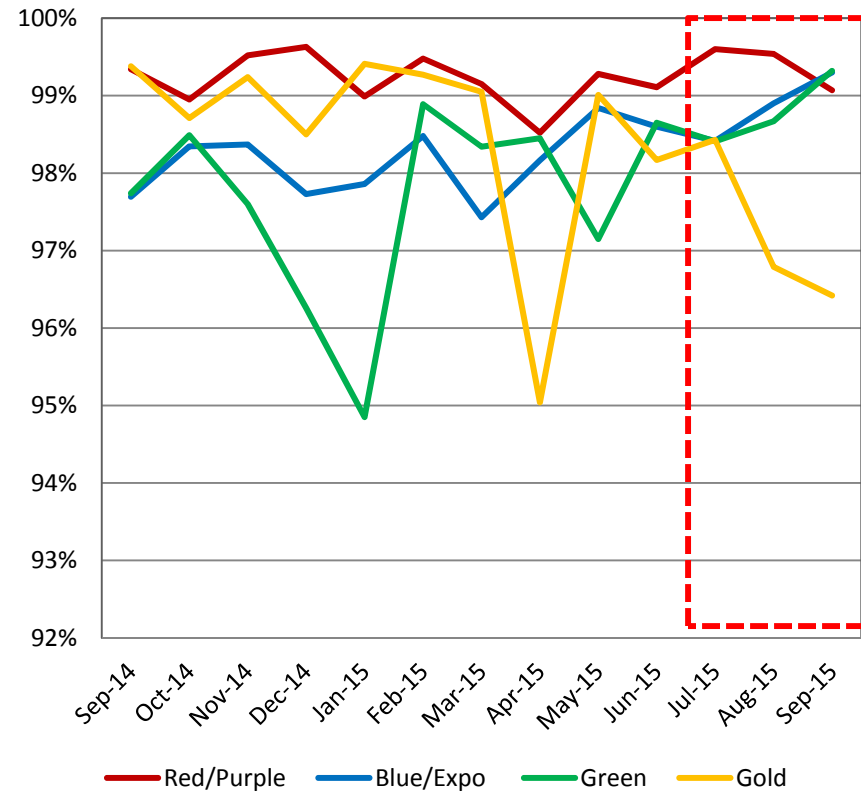
Fiscal Year	Bus	Rail
2014	1,083,697	358,513
2015	1,027,652	344,900

Bus & Rail In Service On-Time Performance

Bus ISOTP



Rail ISOTP

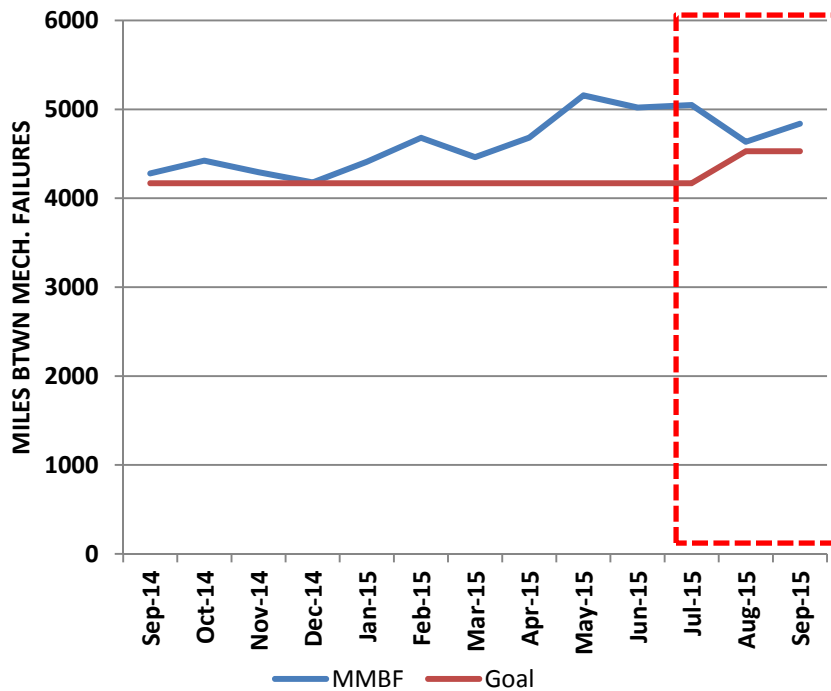


Line	FY15 Actual	FY15 Goal	FY16 Goal
Red/Purple	99.13%	99.9%	99.9%
Blue	99.41%	97.76%	99.4%
Green	97.39%	99.80%	99.4%
Gold	98.56%	99.9%	99.9%
Expo	99.14%	99.14%	99.1%



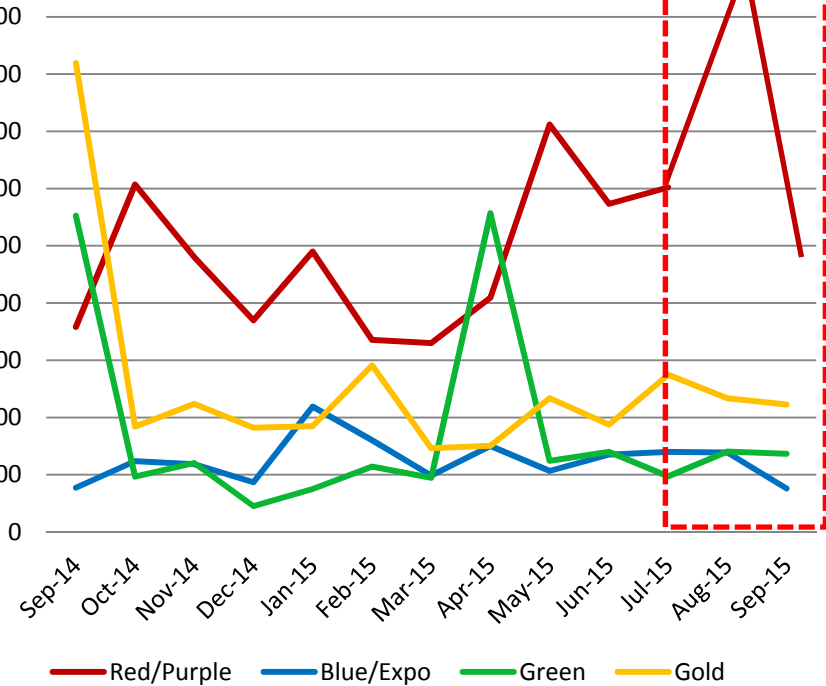
Bus & Rail Mean Miles Between Mechanical Failures

Directly Operated Bus Mean Miles Between Mechanical Failures



	FY 15 Actual	FY15 Goal	FY16 Goal
Bus	4,482	4,169	4,529

Rail Mean Miles Between Mechanical Failures

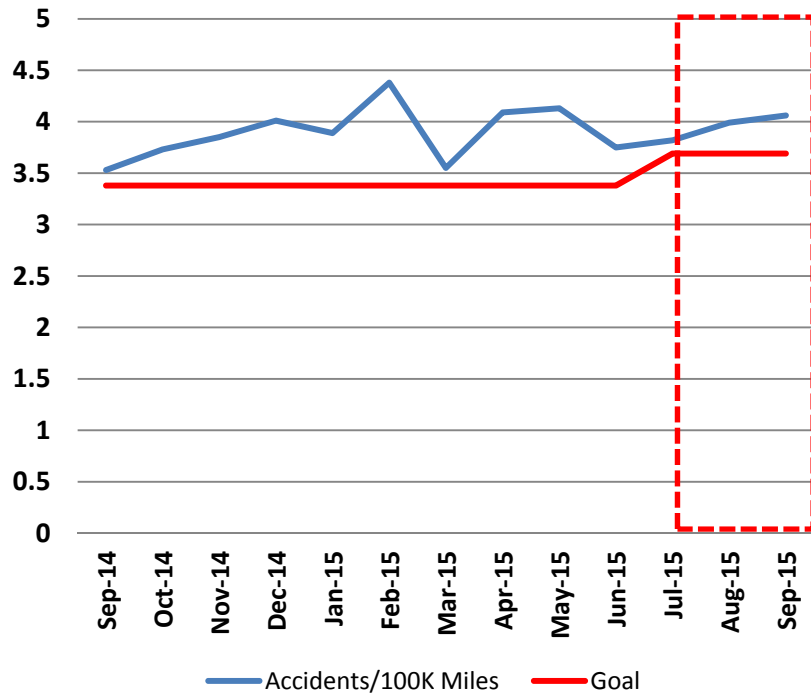


Line	FY15 Actual	FY 15 Goal	FY16 Goal
Red/Purple	85,090	36,000	86,792
Blue/Expo	23,716	15,000	23,934
Green	21,054	16,000	21,008
Gold	44,171	23,000	45,762



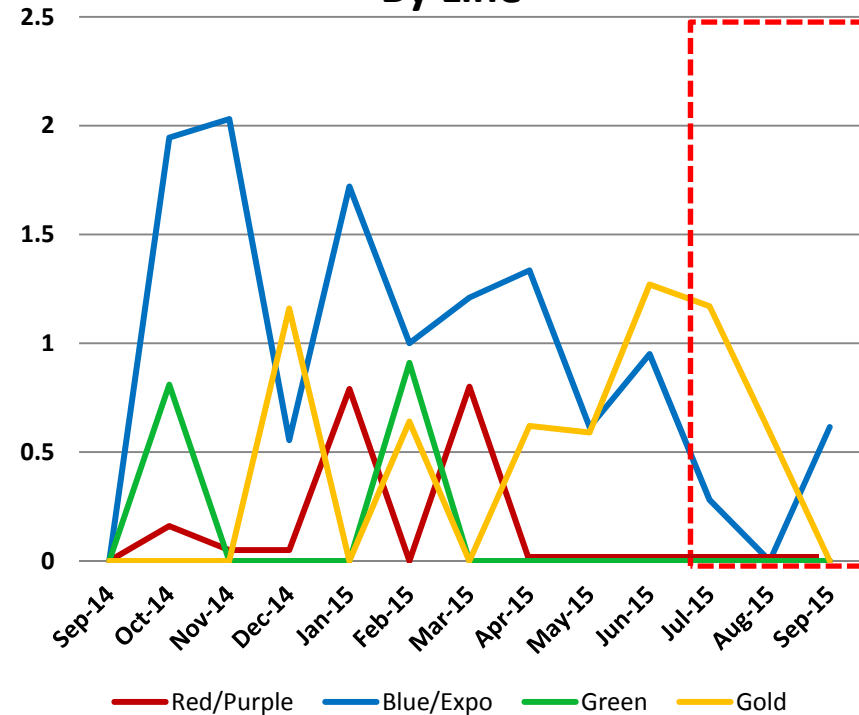
Bus & Rail Vehicular Accidents per 100,000 Miles

Bus Accidents/100K Miles



	FY 15 Actual	FY15 Goal	FY16 Goal
Bus	3.83	3.38	3.69

Rail Vehicle Accidents/100K Miles By Line

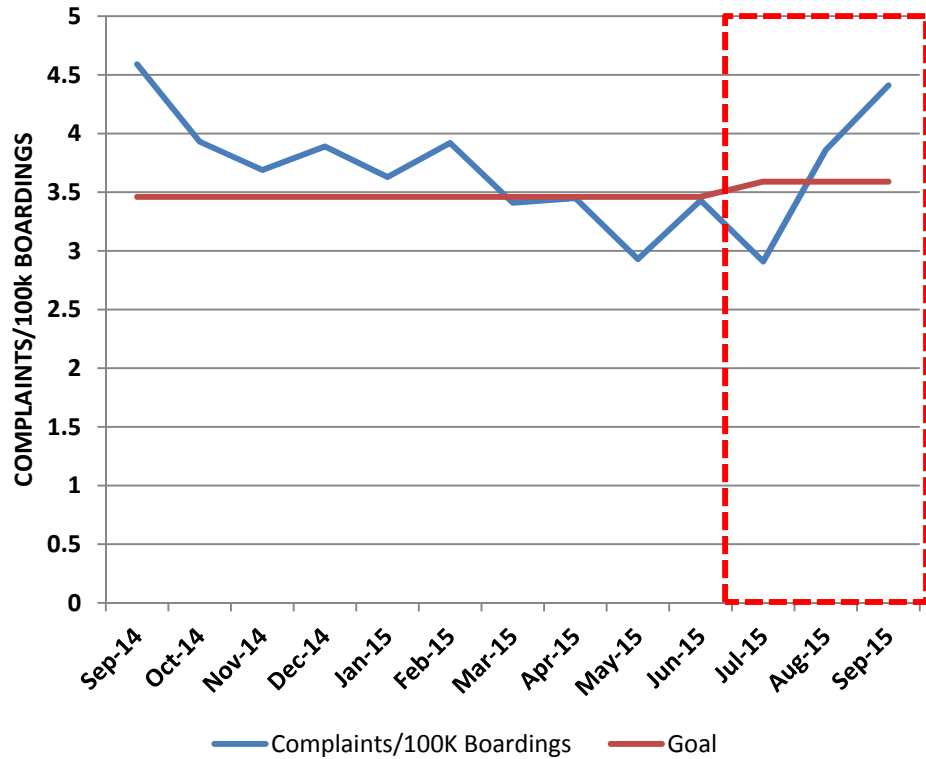


Line	FY 15 Actual	FY 15 Goal	FY16 Goal
Red/Purple	0.13	0.06	0.14
Blue	0.89	1.35	1.10
Green	0.14	0.06	0.15
Gold	0.54	0.41	0.47
Expo	1.02	1.35	1.10

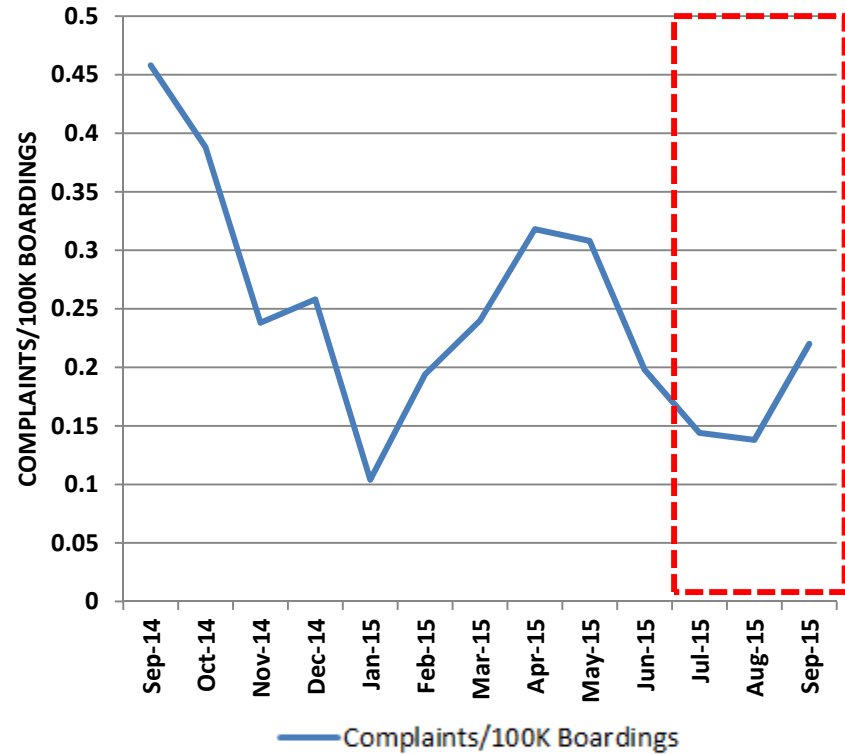


Bus & Rail Customer Complaint Rates

Bus Complaints/100K Boardings



Rail Complaints/100K Boardings

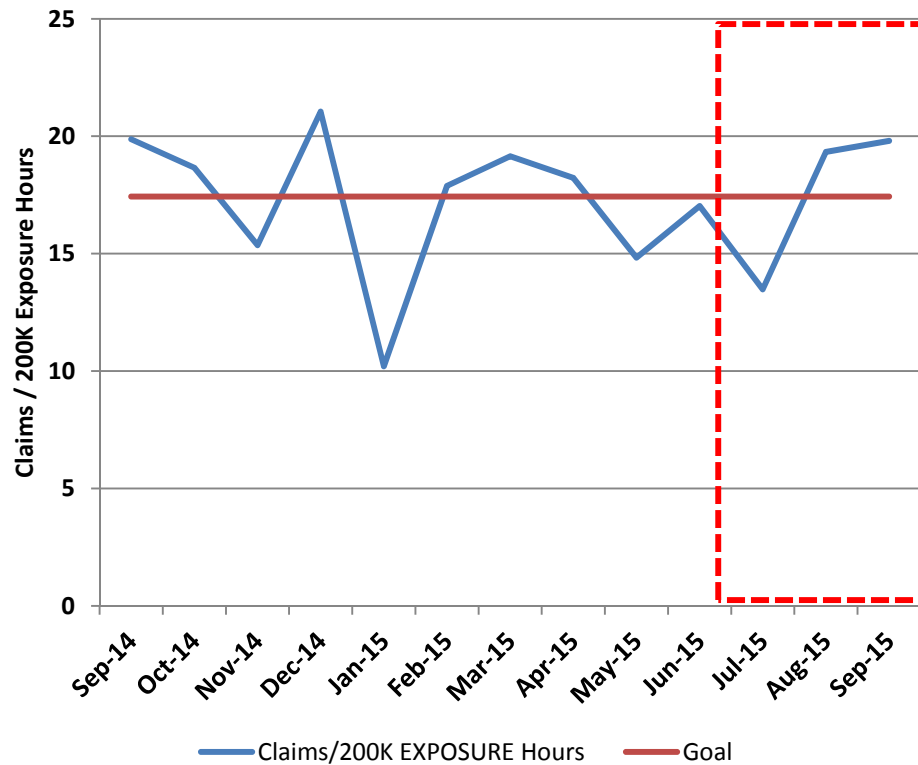


Line	FY 15 Actual	FY 15 Goal	FY16 Goal
Red/Purple	0.11	0.45	0.27
Blue	0.27	1.08	0.12
Green	0.32	0.90	0.31
Gold	0.34	1.19	0.34
Expo	0.38	1.08	0.40



New Bus & Rail Worker's Compensation Claims

Bus New Workers Compensation Claims/200K Exposure Hours



Rail New Workers Compensation Claims /200K Exposure Hours

