



Metro

Los Angeles County
Metropolitan Transportation
Authority
One Gateway Plaza
3rd Floor Board Room
Los Angeles, CA

Board Report

File #: 2015-1750, **File Type:** Oral Report / Presentation

Agenda Number: 39.

**SYSTEM SAFETY, SECURITY AND OPERATIONS COMMITTEE
FEBRUARY 18, 2016**

RECEIVE oral report on **System Safety, Security and Operations.**



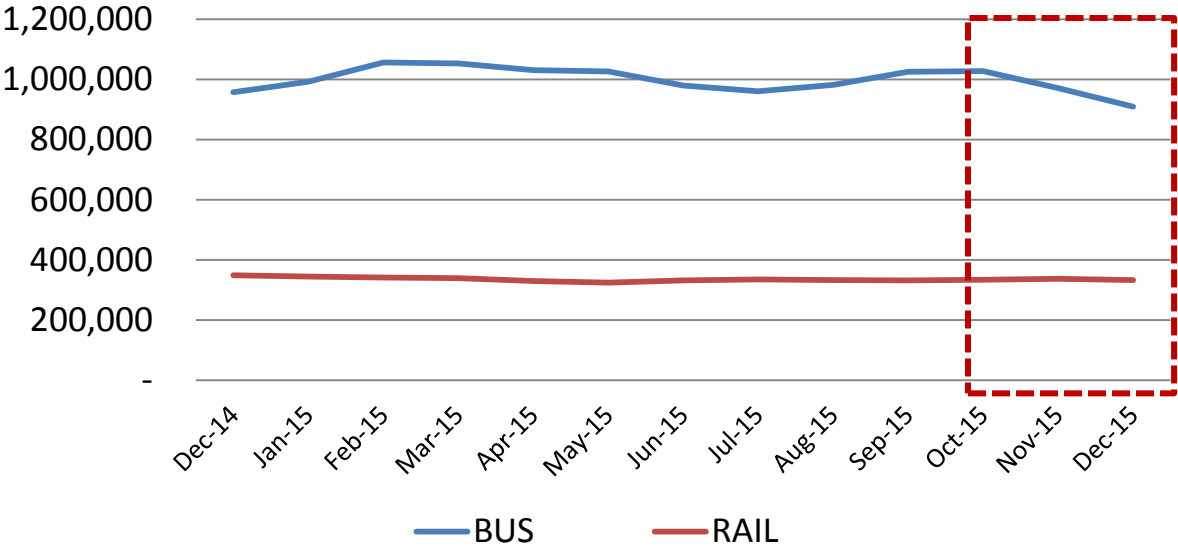
Metro Bus & Rail Performance

FY16 Quarter 2

February 18, 2016

Bus & Rail Average Weekday Ridership

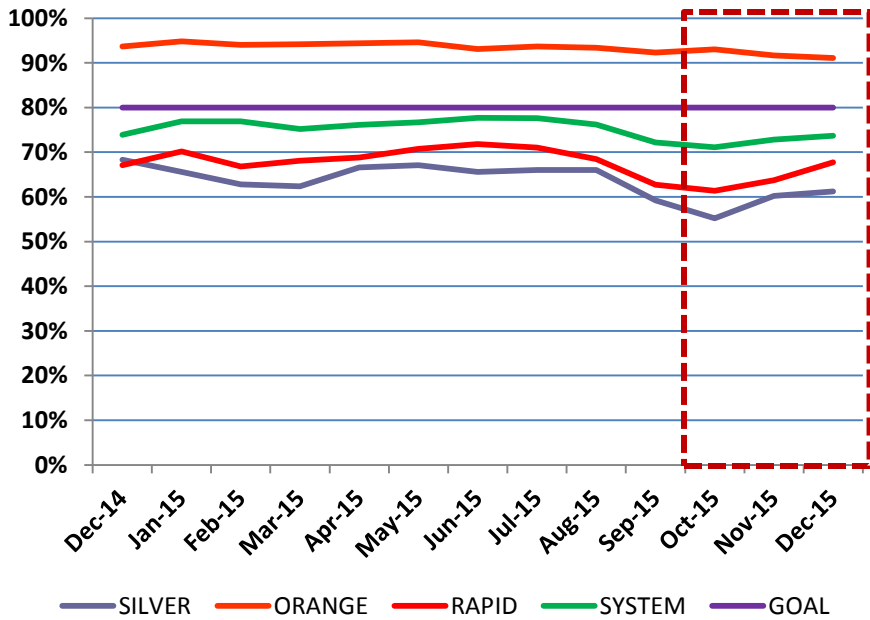
**Bus & Rail Average Weekday Ridership/
Monthly Estimates**



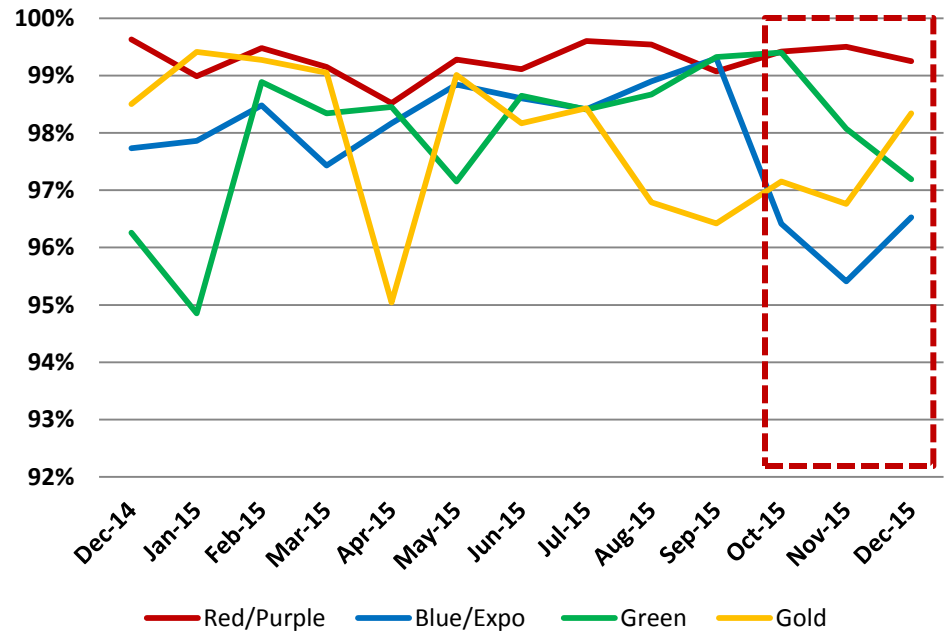
Fiscal Year	Bus	Rail
2014	1,083,697	358,513
2015	1,027,652	344,900

Bus & Rail In Service On-Time Performance

Bus ISOTP



Rail ISOTP

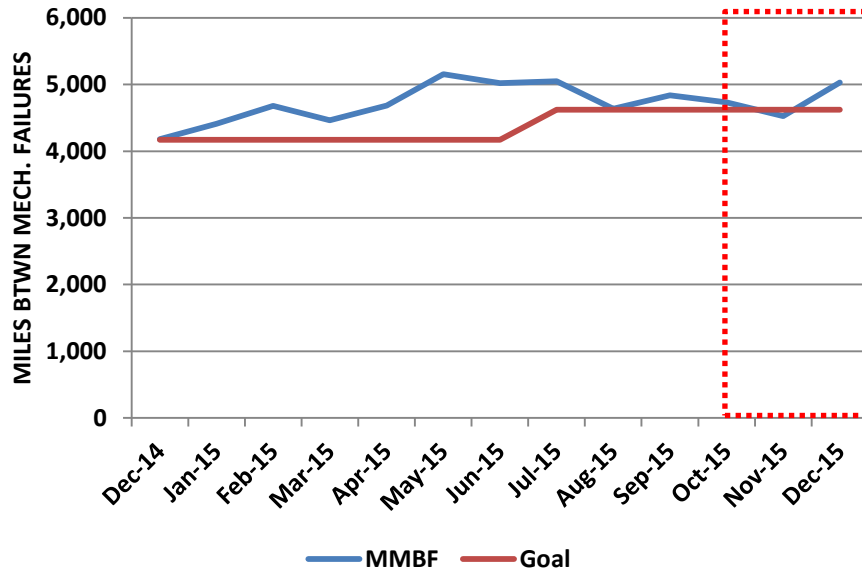


	FY15 Actual	FY16 YTD Actual	FY16 Goal
Bus	75.03%	73.55%	80%

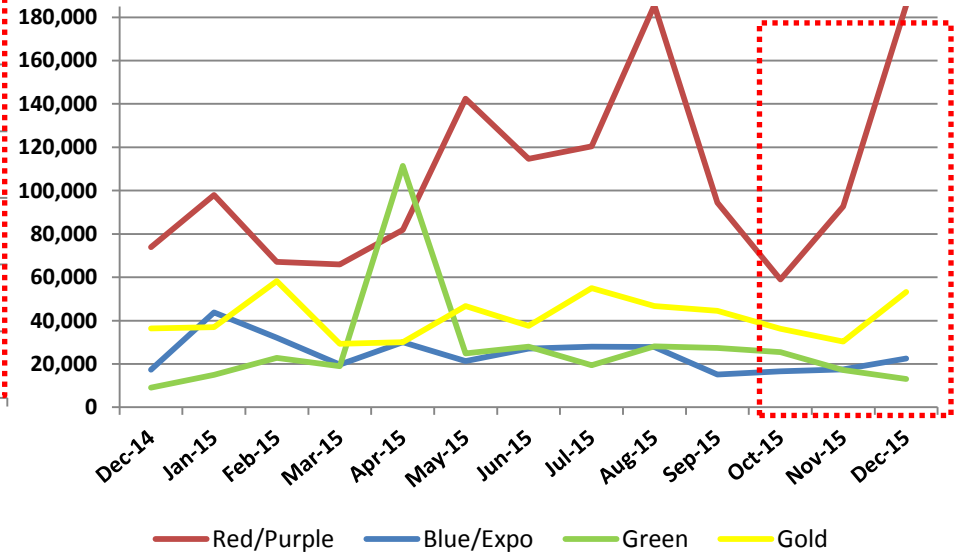
Line	FY15 Actual	FY16 YTD Actual	FY16 Goal
Red/Purple	99.13%	99.63%	99.9%
Blue	99.41%	99.34%	99.4%
Green	97.39%	99.51%	99.4%
Gold	98.56%	97.32%	99.9%
Expo	99.14%	98.86%	99.1%

Bus & Rail Mean Miles Between Mechanical Failures

Directly Operated Bus Mean Miles Between Mechanical Failures



Rail Mean Miles Between Mechanical Failures

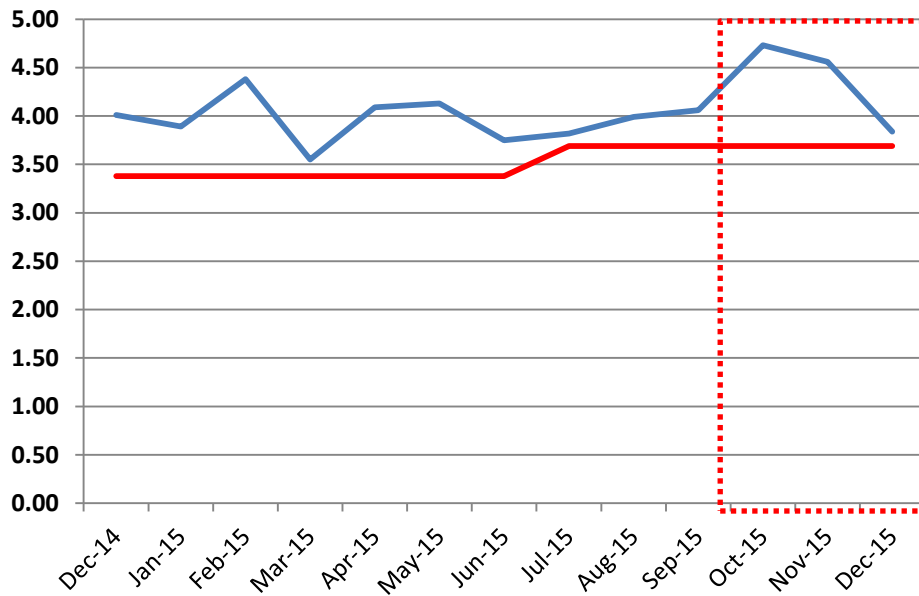


	FY15 Actual	FY16 YTD Actual	FY16 Goal
Bus	4,482	4,799	4,529

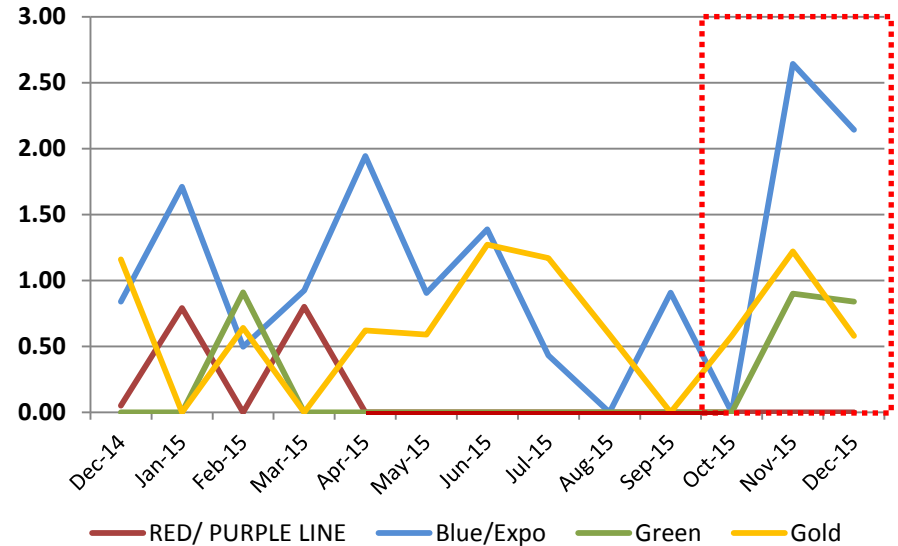
Line	FY15 Actual	FY16 YTD Actual	FY16 Goal
Red/Purple	85,090	120,521	86,792
Blue/Expo	23,716	20,117	23,934
Green	21,054	20,212	21,008
Gold	44,171	42,615	45,762

Bus & Rail Vehicular Accidents per 100,000 Miles

Bus Accidents/100K Miles



Rail Vehicle Accidents / 100K Miles By Line

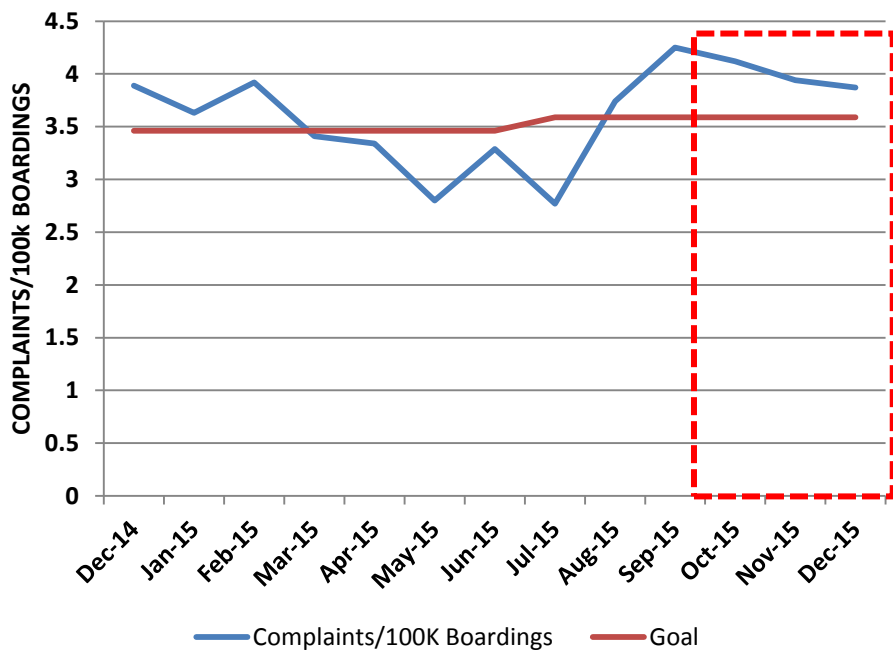


	FY15 Actual	FY16 YTD Actual	FY16 Goal
Bus	3.77	4.18	3.69

Line	FY 15 Actual	FY16 YTD Actual	FY16 Goal
Red/Purple	0.13	0.00	0.14
Blue	0.89	1.26	0.79
Green	0.14	0.28	0.15
Gold	0.54	0.69	0.47
Expo	1.02	0.29	1.10

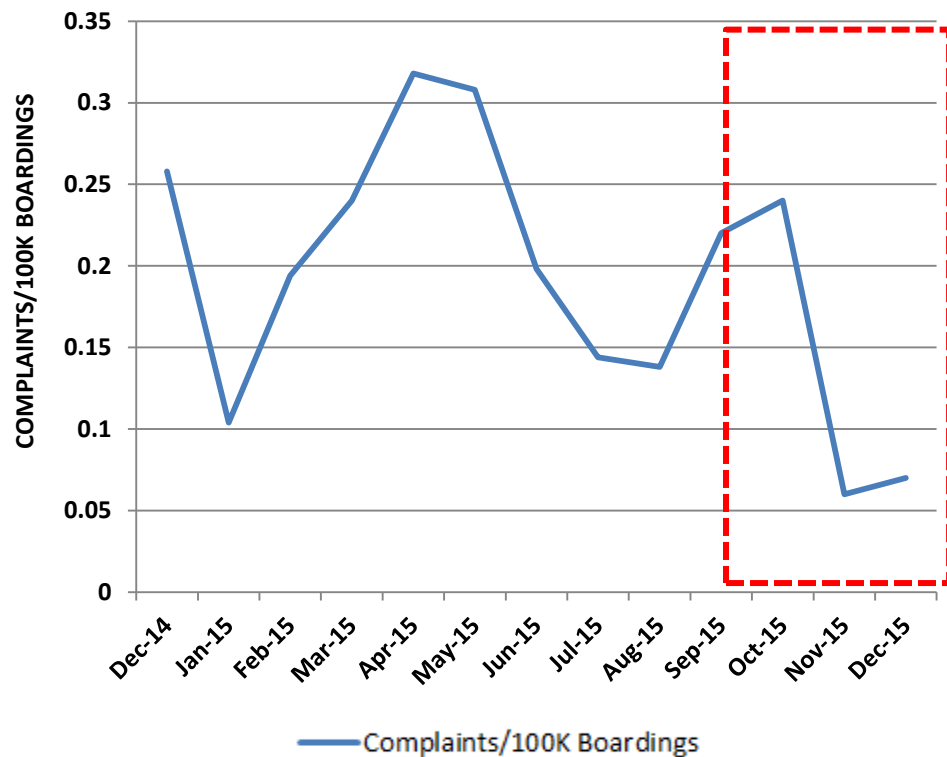
Bus & Rail Customer Complaint Rates

Bus Complaints/100K Boardings



	FY15 Actual	FY16 YTD Actual	FY16 Goal
Bus	3.63	3.78	3.59

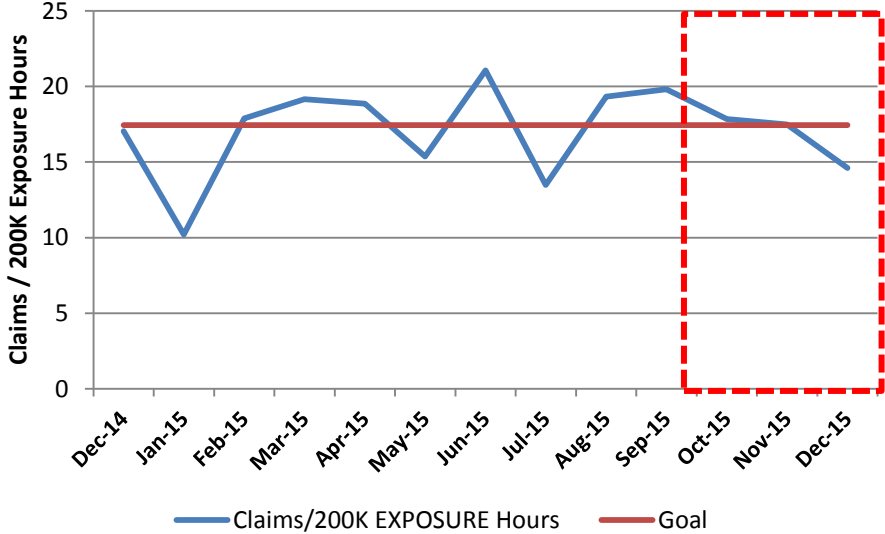
Rail Complaints/100K Boardings



Line	FY 15 Actual	FY16 YTD Actual	FY16 Goal
Red/Purple	0.11	0.03	0.12
Blue	0.27	0.14	0.27
Green	0.32	0.23	0.31
Gold	0.34	0.23	0.34
Expo	0.38	0.20	0.40

New Bus & Rail Worker's Compensation Claims

Bus New Workers Compensation Claims/200K Exposure Hours



Rail New Workers Compensation Claims /200K Exposure Hours

