



Board Report

File #: 2016-0156, **File Type:** Oral Report / Presentation

Agenda Number: 20

**CONSTRUCTION COMMITTEE
MARCH 17, 2016**

RECEIVE **Program Management Executive Director's oral report.**

DISCUSSION

RECEIVE **Program Management Executive Director's oral report.**

ATTACHMENTS

Attachment A - Program Management Executive Director's Report - March 2016

- **Crenshaw/LAX** - Charles Beauvoir, Deputy Executive Officer, Project Mgmt., (213)299-3095
- **Regional Connector** - Girish Roy, Deputy Executive Officer, Project Mgmt., (213)893-7119
- **Westside Purple Line Ext 1 and 2-** Dennis Mori, EO Project Mgmt., (213)922-7238
- **I-405** - Nazem Moussa, Deputy Executive Officer, Project Mgmt. (213)922-7221
- **Gerald Desmond Bridge** - Rick Clarke, Executive Director, Program Mgmt. (213)922-7557
- **Division 13** - Timothy Lindholm, EO Project Engr., (213)922-7297
- **Patsaouras Plaza Busway Station** - Timothy Lindholm, EO Project Engr., (213)922-7297
- **MRL - MOL North Hollywood Station** - Timothy Lindholm, EO Project Engr., (213)922-7297
- **Universal Pedestrian Bridge** - Timothy Lindholm, EO Project Engr., (213)922-7297
- **Presentation** - Shannon Hanley, Senior Administrative Analyst, (213)922-1350

Reviewed by: Richard Clarke, Executive Director, Program Management, (213) 922-7557

Program Management -- Transit Status Report

Significant Issues

Presented By

Richard Clarke

Executive Director,
Program Management

March 2016

Construction Committee
Los Angeles County Metropolitan Transportation Authority



CRENSHAW/LAX TRANSIT PROJECT

SIGNIFICANT HIGHLIGHTS

- Overall construction progress is 34.5% complete (excludes contractor mobilization costs). Design-builder is behind schedule but discussions continue regarding mitigation efforts.
- Continued placing invert concrete and starting wall placement at Expo/Crenshaw Station in advance of lowering tunnel boring machine into Station in March.
- Continued invert concrete placement at UG#1 in front of LAX runways.
- “Harriet” as in Harriet Tubman is name of the Tunnel Boring Machine that will excavate the tunnels.
- Southwestern Yard Design-Builder 60% design drawings under Metro review. Construction start scheduled for April 2016.



Greenline bridge falsework construction ongoing



Tunnel ventilation fabrication at Bellanca Yard

March 2016

Construction Committee
Los Angeles County Metropolitan Transportation Authority



REGIONAL CONNECTOR TRANSIT CORRIDOR

SIGNIFICANT HIGHLIGHTS

- Overall Project Progress is 14.4%, Design Build (DB) Construction is 6.8% and DB Final Design is 88.5% complete.
- 1st/Alameda Shoofly work progressing on schedule; reopening of revenue service through Little Tokyo Station anticipated March 21.
- Piling, underground utility relocations, and demo work at 1st/Alameda continues.
- 2nd/Hope Station Yard set-up completed. Pile trenching and potholing underway; piling operations commencing for station excavation and street decking.
- Utility rearrangements and investigations along Flower Street continue.



Shoofly installation at Mangrove Yard

March 2016

Construction Committee

Los Angeles County Metropolitan Transportation Authority



WESTSIDE PURPLE LINE – SECTION 1

SIGNIFICANT HIGHLIGHTS

The Advanced Utility Relocations (AUR) work involving three contracts is 81% complete overall.

- The Wilshire/Fairfax Advanced Utility Relocations Contract closeout has been completed; on-time and under budget.
- The Wilshire/La Cienega Advanced Utility Relocations Contractor continues with the Southern California Edison (SCE) power relocation work and the City of Beverly Hills sanitary sewer, water and storm drain relocations. This is the last AUR contract and is on schedule to complete in December 2016.



AUR Contractor Installing SCE Electrical Vault West of La Cienega Boulevard

Tunnels, Stations, Trackwork and Systems Design-Build Contract

- Final Design for the tunnels, three subway stations, trackwork, and systems is 75% complete overall.
- Pile installation at the Wilshire/La Brea Station is well underway in support of station excavation to begin tunneling operations.

March 2016

Construction Committee

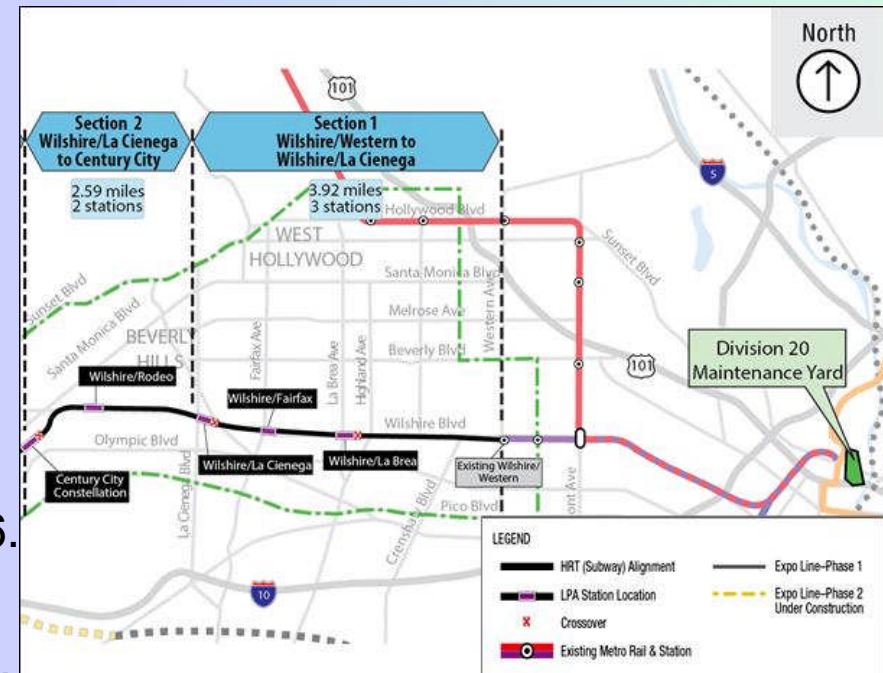
Los Angeles County Metropolitan Transportation Authority



WESTSIDE PURPLE LINE – SECTION 2

SIGNIFICANT HIGHLIGHTS

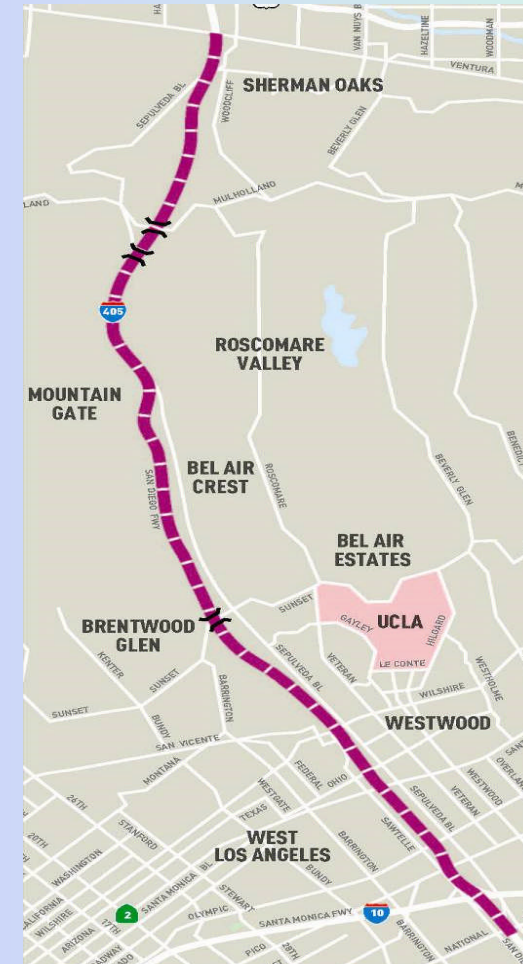
- Contract C1120 – Design/Build Request for Qualifications/Request for Proposal was released on September 14, 2015.
- The firms meeting the minimum requirements as a result of the first step were announced on December 4, 2015.
- Amendment 8 to the RFP was issued on February 4, 2016.
- Price Proposals are due on May 16, 2016.
- FFGA anticipated approval August 2016.
- Contract award anticipated January 2017.



I-405 SEPULVEDA PASS IMPROVEMENTS PROJECT

SIGNIFICANT HIGHLIGHTS

- Contractor is working toward Final Completion
- Working through remaining items for final acceptance
- Preparation for Claim 86 arbitration is ongoing



March 2016

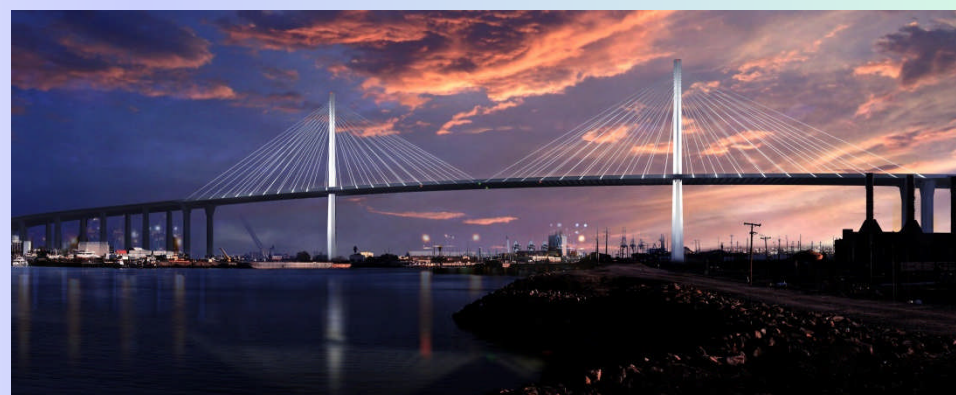
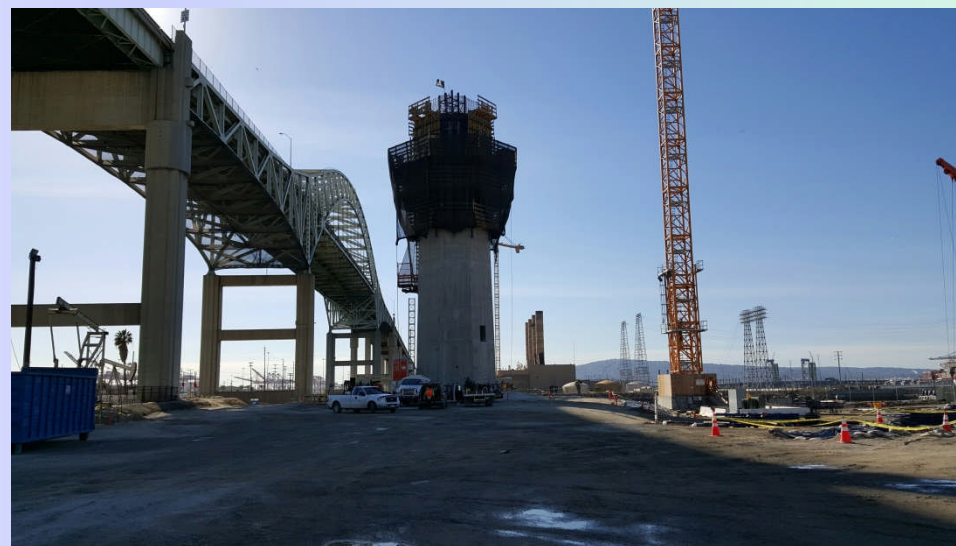
Construction Committee
Los Angeles County Metropolitan Transportation Authority



GERALD DESMOND BRIDGE

SIGNIFICANT HIGHLIGHTS

- Replacement of old, obsolete bridge to facilitate traffic to/from the Ports of Los Angeles/Long Beach
- Over 40% of international freight passes through the port complex
- Approximately \$1.4 Billion project; Metro share is \$17.3 Million
- Substantial Completion projected mid-2018



March 2016

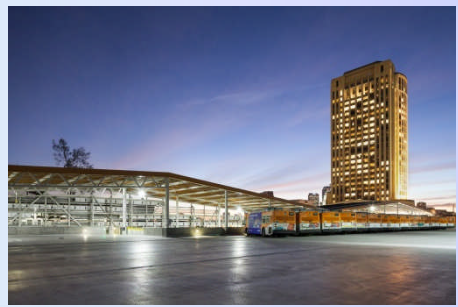
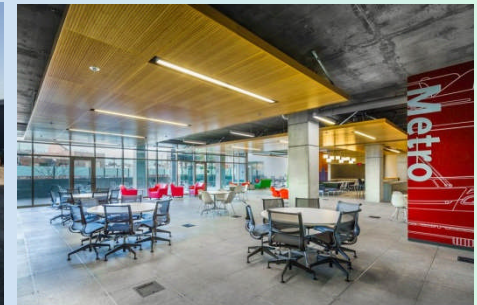
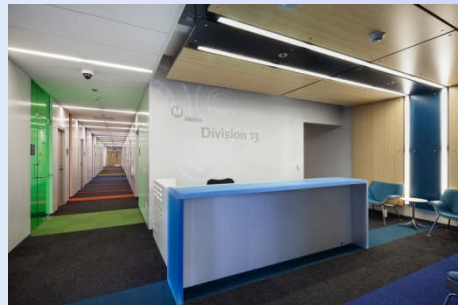
Construction Committee
Los Angeles County Metropolitan Transportation Authority



DIVISION 13 BUS O&M FACILITY

SIGNIFICANT HIGHLIGHTS

- Project is 100% complete and open as of February 1, 2016.
- Current activities work include completion of punch list, demobilization, and close out of the contract with McCarthy.
- Project has been selected as a finalist for Project of the Year by the LABJ Commercial Real Estate Awards



March 2016

Construction Committee
Los Angeles County Metropolitan Transportation Authority



PATSAOURAS PLAZA BUSWAY STATION

SIGNIFICANT HIGHLIGHTS

- Construction start now scheduled for March/April 2016
- Work in progress includes approval of 100% design package with Caltrans, receipt of Caltrans permits, ROW certifications, utility clearances, resolution of environmental issues with Caltrans, exemptions to start construction, completion of final reports, and resolution of associated commercial issues with the Contractor.
- Board item for LOP budget increase on March 2016 agenda.
- Project completion scheduled for Summer 2017



March 2016

Construction Committee
Los Angeles County Metropolitan Transportation Authority



CIP PROJECTS

MRL-MOL N. Hollywood Station West Entrance:

Progress:

- Construction is 58% complete
- Targeted completion by June 2016
- Escalator installation ongoing
- Elevators installation to begin shortly
- Suspended slab work ongoing
- Electrical conduits installation ongoing
- Fire Protection piping installation ongoing



March 2016

Construction Committee
Los Angeles County Metropolitan Transportation Authority



CIP PROJECTS

Universal Pedestrian Bridge:

Progress:

- Construction 74% complete.
- Targeted completion by early April 2016 to coincide with opening of Harry Potter attraction
- Structural steel installation for bridge and Elevators is in progress
- Escalator installation at Station # 1 and # 3 is in progress
- Elevator installations at Station # 1, # 2, and # 3 scheduled to start shortly
- Transformer installation in progress
- Cost Risk: Shortfall in LOP Budget, staff on Board agenda for March 2016

























March 2016

Construction Committee

Los Angeles County Metropolitan Transportation Authority



Cost & Schedule Performance Summary Chart

Project	Cost Performance	Schedule Performance	Comments
Crenshaw/LAX			The design-build contractor is currently reporting that they are behind schedule. Staff is working with contractor to attempt to mitigate delay.
Westside Purple Line Extension-Section 1			
Regional Connector			LOP budget adjustment of \$131.8 million was approved by Metro Board in December. Project team is working with the DB contractor to develop a detailed recovery schedule to maintain FFGA RSD of May 29, 2021. The interface with city departments are critical to the success of the mitigation measures.
1-405 Sepulveda Pass improvements Project			Final Acceptance is scheduled for March 16, 2016. Preparation for Claim 86 is ongoing.
Universal City Pedestrian Bridge			Construction is 75% complete and the schedule has been accelerated to substantially complete construction on April 6, 2016 to coincide with Universal's Harry Potter ride opening on April 7 th . Staff requesting LOP and CMA increases.
MOL to MRL North Hollywood Connector			Construction is 58% complete and is expected to substantially complete in June 2016. There are no significant issues on this project at this time.
Patsaouras Plaza			Change orders have been negotiated for design error/tunnel conflict. Errors + Omissions process underway. Schedule delayed due to permitting, environmental, ROW issues with Caltrans, and resolution of associated commercial issues. Goal to start construction in March/April 2016. Board item to address budget in March 2016.
Division 13			Substantial completion occurred November 2, 2015, Certificate of Occupancy issued by LAFD December 3, 2015. Opened for revenue service February 1, 2016.
P3010 Rail Car Vehicle Procurement			First vehicles acceptance and vehicle level qualification testing are taking longer than planned. Kinkisharyo has informed Metro of potential delay to the delivery of 78 base order vehicles in 53 months. Though the delay will not impact the opening of any of Metro's new rail lines, mitigation plans are being developed.
Gold Line Foothill Ext			Revenue operations scheduled to begin March 5, 2016
Expo Phase II			Metro has accepted turnover of the Mainline and began Pre-Revenue Operations. Construction Authority is working to turn over the Yard Facility. Substantial Completion for the Expo Project will be achieved upon turnover of the Yard Facility. Operations and Maintenance Facility Turnover Application is under Metro review.



On target



Possible problem



Major issue

ANNUAL PROGRAM EVALUATION (APE)

- Annual overall evaluation of Metro's capital program
- A detailed review of the project costs and schedule
- Reporting to the Board any differences in Life-of-Project budget and reasons for the changes
- A project management tool to bring greater consistency, transparency, and discipline
- Facilitates financial planning