



## Board Report

File #: 2016-0230, File Type: Contract

Agenda Number: 25

### CONSTRUCTION COMMITTEE JUNE 16, 2016

**SUBJECT: CRENSHAW/LAX TRANSIT PROJECT**

**ACTION: AUTHORIZE THE CHIEF EXECUTIVE OFFICER (CEO) TO EXECUTE CONTRACT MODIFICATION**

#### RECOMMENDATION

CONSIDER:

- A. AUTHORIZING the CEO to execute a Contract Modification to Contract No. C0988 with Walsh/Shea Corridor Constructors (WSCC), to **design and construct a bus transfer facility** for \$2,200,000, increasing the total contract price from \$1,294,476,149.38 to \$1,296,676,149.38 for the **Crenshaw/LAX Transit Project**;
- B. APPROVING an increase in Contract Modification Authority (CMA) for Contract No. C0988, in the amount of \$2,200,000, increasing the total CMA from \$134,699,993 to \$136,899,993;
- C. ADOPTING a Life-of-Project (LOP) Budget of \$2,200,000 for the Bus Transfer Facility; and
- D. AUTHORIZING the execution of this Contract Modification subject to final execution of the 3% Local Match funding agreement between Metro and the City of Inglewood.

#### ISSUE

A notice-to-proceed was issued to Walsh/Shea Corridor Constructors (WSCC) on September 10, 2013 for Contract No. C0988. The C0988 contract included three park- and-ride facilities: Expo/Crenshaw Station, Fairview Heights Station, and Downtown Inglewood Station. The Metro Board approved a bus transit facility at the Downtown Inglewood light rail station during the November 2015 Board meeting. This was also approved by the South Bay Cities Council of Governments (COG) in November 2015. Changing the park-and-ride facility at the Downtown Inglewood station into a bus transit facility is a change to the Contract No. C0988 and requires a Contract Modification.

#### DISCUSSION

The Metro Board approved a bus transit facility at the Downtown Inglewood light rail facility at the November 2015 Board meeting. The South Bay Cities COG also approved the project in November 2015. The Final Environmental Impact Statement /Final Environmental Impact Report (FEIS/FEIR), which was adopted by the Metro Board in September 2011, includes a park-and-ride facility at the Downtown Inglewood station located at Florence/La Brea. An environmental analysis was conducted to determine the potential environmental impacts associated with the repurposing of the Downtown Inglewood Station from a park-and-ride lot to a bus transit center. In addition to the repurposing of the parking lot at the Downtown Inglewood station, the analysis included impacts to ancillary properties at the Fairview Heights station. The addresses for these properties are 6848 West Blvd, Los Angeles, CA 90043; 1119 E. Redondo Blvd., Inglewood, CA 90302; 1123 E. Redondo Blvd., Inglewood, CA 90302; 1133 E. Redondo Blvd., Inglewood, CA 90302; and 1137 E. Redondo Blvd., Inglewood, CA 90302. This analysis indicates that identified potential environmental impacts would have no adverse effects resulting from the action. Metro would continue to implement the mitigation measures identified in the Record of Decision for the overall project to ensure significant impacts are continually mitigated.

Locating the bus transit facility at the Downtown Inglewood station will require repurposing the parking lot from vehicle parking spaces to bus bays. The entry into the bus transit facility will also require upgrading the intersection signal at Florence/Hillcrest. Subsequent to the Metro Board approval for the bus transit center, Metro has determined that an additional \$700,000 from the previous December 2015 approval of \$1,500,000 is required to fully build out the bus transit facility. The additional cost is required due to addition of a restroom dedicated for the bus operators per the contract with the United Transportation Union (UTU) and revised design as part of the completed negotiations with the design-builder, WSCC.

The execution of this Contract Modification is subject to final execution of the 3% Local Match funding agreement between Metro and the City of Inglewood.

### **DETERMINATION OF SAFETY IMPACT**

This Board action will not have an impact on established safety standards for Metro's Construction projects.

### **FINANCIAL IMPACT**

Upon approval of the recommendations, staff will designate a project number and establish a life of project budget for \$2.2 million. The planned funds will be allocated as follows: \$260,000 in FY16, \$1,240,000 in FY17 and \$700,000 in FY18. Budget will be included in Cost Center 8510, Construction Contract Procurements, Account 50316 - Professional / Technical Services and 53101 - Acquisitions Building and Structures.

The funding for the recommendations is separate from the Fiscal Year budget and the life-of-project budget for the Crenshaw/LAX Transit Project (C/LAX). The recommendations have no financial impact to the C/LAX project. Because this is a multi-year project, the Executive Director, Program

Management, will be accountable for requesting funding in future years.

### Impact to Budget

The source of funds for the recommendations is a combination of Highway Operational Improvements (HOI) funds from the South Bay Cities COG for \$1.5 million and \$0.7 million from Proposition A / Proposition C / TDA Admin funds for the planning, study and redesign. These funds are not eligible for bus and rail capital and operations expenses. No other funds were considered.

In considering the use of HOI funds, staff evaluated the potential added benefits to the service provided by the Crenshaw transit corridor project, which is a significant Metro investment intended to shift considerable number of automobile trips along the corridor to transit ridership. The connection of the proposed bus transit center to the Crenshaw Corridor rail service will be an enhancement to allow riders to continue their transit trips to other destinations without the use of a vehicle. Additionally, the plans to provide direct connection between this transit facility and the proposed stadium in Inglewood could create opportunities for greater transit access and less freeway trips to and from the events.

The HOI funds for \$1.5 million originated from the South Bay Cities COG which agreed to fund the recommendations. Moving forward, staff will develop a mutual understanding with the South Bay Cities COG that all future transit projects targeted for use of the HOI funds will be evaluated individually and on a case-by-case basis to identify congestion relief along with providing adequate technical studies and justifications to the Metro Highway Program for review.

### **ALTERNATIVES CONSIDERED**

The Board may elect to not approve this Contract Modification; however, the Board already authorized modification of the Downtown Inglewood park-and-ride as a bus transit facility. Staff does not recommend this alternative as the C/LAX Project would then proceed with the existing plan to construct the park-and-ride facility. If this Contract Modification is not approved and the park-and-ride facility is constructed, the costs will increase to construct a bus facility in the future and there will also be added costs to demolish the newly built park-and-ride facility.

### **NEXT STEPS**

Upon approval of the recommendations, staff will execute the Contract Modification.

### **ATTACHMENTS**

Attachment A - Procurement Summary  
Attachment B - Contract Modification/Change Order Log  
Attachment C - Downtown Inglewood Bus Plaza Concept  
Attachment D - DEOD Summary

Prepared by:

Charles H. Beauvoir, DEO, Project Management

(213) 922-3095

Frederick Origel, Director, Contract Administration

(213) 922-7331

Kimberly Ong, Interim DEO, Project Management

(213) 922-7308

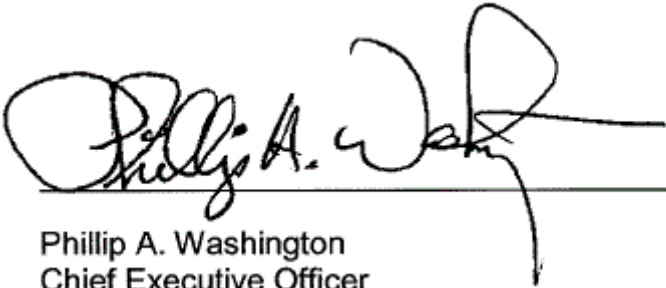
Isidro Panuco, Transportation Planning Manager

(213) 922-7984

Reviewed by:

Ivan Page, Interim Executive Director, Vendor/Contract Management, (213) 922-6383

Richard Clarke, Executive Director, Program Management, (213) 922-7557



Phillip A. Washington  
Chief Executive Officer

## PROCUREMENT SUMMARY

## CRENSHAW/LAX TRANSIT PROJECT / C0988

1.	<b>Contract Number:</b> C0988 Crenshaw/LAX Transit Corridor Design-Build		
2.	<b>Contractor:</b> Walsh/Shea Corridor Constructors (WSCC)		
3.	<b>Description:</b> Design and construct bus transfer facility		
4.	<b>The following data is current as of:</b> April 30, 2016		
5.	<b>Contract Completion Status:</b>		
	<b>Proposals Opened</b>	6/12/12	<b>% Completion \$'s</b> 44.4%
	<b>Contract Awarded</b>	6/27/13	<b>% Completion Time</b> 51.8%
	<b>Notice to Proceed (NTP)</b>	9/10/13	<b>Orig. Contract Days</b> 1824
	<b>Original Completion Date</b>	9/08/18	<b>Change Order Days</b> 35
	<b>Current Estimated Completion Date</b>	10/13/18	<b>Suspended Days</b> 0
	<b>Total Revised Days</b>		1859
6.	<b>Financial Status:</b>		
	<b>Contract Award :</b>	\$1,272,632,356.00	
	<b>Total of Mods/Changes issued to Date</b>	\$21,843,793.38	
	<b>Current Contract Value :</b>	\$1,294,476,149.38	
7.	<b>Contract Administrator:</b> Frederick Origel Director, Contract Administration	<b>Telephone Number:</b> (213) 922-7331	
8.	<b>Project Director:</b> Charles Beauvoir, S.E. Deputy Executive Officer, Project Management	<b>Telephone Number:</b> (213) 922-3095	

**A. Procurement Background**

This Board Action is to authorize the CEO to execute a Contract Modification to design and construct a bus transfer facility at the Florence/La Brea Station. This Contract Modification will be processed in accordance with Metro's Acquisition Policy.

On June 27, 2013, Contract No. C0988 was awarded to Walsh/She Corridor Constructors, the lowest responsive and responsible proposer, in the amount of \$1,272,632,356. As of April 30, 2016, a total of 167 Contract Modifications and Change Orders have been approved and 22 changes are pending.

Attachment B shows modifications issued as of April 30, 2016, to add and/or delete work and the proposed modifications pending authorization.

## **B. Cost/Price Analysis**

The final negotiated price for this contract change was determined to be fair and reasonable in accordance with Metro Procurement Policies and Procedures. The negotiation process included, but was not limited to, clarification, fact finding, technical evaluation, cost analysis, and an independent cost estimate. The recommended price will be audited by MASD and subject to removal of any unallowable or unallocable costs.

<b>MOD. No.</b>	<b>Modification Description</b>	<b>Proposed Amount</b>	<b>Metro ICE</b>	<b>Negotiated Amount</b>
TBD	La Brea Bus Transfer Facility	\$2,254,164.86	\$2,108,296.00	\$2,200,000.00

**ATTACHMENT B**

**CONTRACT MODIFICATION / CHANGE ORDER LOG –  
CRENSHAW/LAX TRANSIT PROJECT**

<b>Mod. No.</b>	<b>Description</b>	<b>Status</b>	<b>Cost</b>
1	Administrative Change - Update Special Provision SP -05-Notice and Service and SP-06-Insurance Requirements	Approved	No Cost
2	Administrative Change - Technical Reports Part 6.3 PSR/PR	Approved	No Cost
3	CPUC Application	Approved	No Cost
4	Administrative Change - Revised Contractor's Mailing address	Approved	No Cost
5.3	Clarification of Schedule F Applicability	Approved	No Cost
6	Administrative Change – Update Metro Rail Directive Drawings	Canceled	Canceled
7	Design -Aviation/Century Station – Pedestrian Vertical Circulation	Approved	\$366,400.00
8	Design - Century Boulevard Future Right Turn Lane (LAWA)	Approved	\$47,820.00
9	Design -Protect for Future Transport. Corridor at 98th Street	Approved	\$120,458.00
10	Update Volume 1: Form of Contract, Volume 4: Metro Specifications and Volume 5: Metro Rail Design Criteria	Canceled	Canceled
11	Special Events Traffic Control Site Improvements	Approved	\$26,754.00
12	Design Fare Gates At-Grade Latching	Approved	\$239,000.00
13	Construction of Fare Gates At-Grade Latching	Approved	\$2,310,000.00
14	Hazardous Material Abatement Parcel	Approved	\$260,338.90
15	Hazardous Material Abatement Parcel Florence	Approved	\$481,555.20
16	Updated Volume 1, 4, and 7	Approved	No Cost
17	Construction - Century Boulevard Future Right Turn Lane (LAWA)	Approved	\$122,503.49
18	Construction -Protect for Future Transport. Corridor at 98 <sup>th</sup> St	Approved	\$240,434.34
19	Update MRDC Station Benches	Approved	No Cost
20	Waste Removal Bellanca & Arbor ROW	Approved	\$80,880.00
21	Design Underground Structure HDPE	Approved	No Cost
22	ADA Directional Tile	Approved	No Cost
23	Modify Property Turnover Dates	Approved	No Cost
24	Phone System For Field Office	Approved	\$44,019.07
25	Additional Property Demo, Parcel HS-2706	Approved	\$60,731.85
26	Rail Design Criteria Update – Full Height Platform End Gate	Approved	\$194,412.00
27	Rail Design Criteria Update – LED Lighting	Approved	\$407,242.00
28	Rail Design Criteria Update – Park and Ride Lot ETEL	Approved	\$407,552.00
29.1	Traffic Control Support for DWP Utility Work	Approved	\$113,232.00
29.2	Adjustment Traffic Control for DWP at MLK	Approved	\$112,216.00
30.3	Access for Construction of Temporary Roadway	Approved	No Cost

31	Security Guard – Crenshaw/LAX IPMO	Approved	\$102,757.54
32	ACM Removal Century-Aviation Bridge	Approved	\$55,012.20
33	Revised Steel Canopy Sections	Approved	(\$66,254.00)
34	Temporary Fencing at Avis Property	Approved	\$1,212.43
35	Hazardous Material Abatement Gourmet Food Bldg	Approved	\$341,074.00
36	Hazard Material Abatement-Bldgs /Properties	Approved	\$211,166.00
37	Dispute Review Board Procedures	Canceled	Canceled
38.2	Update Volume 1 Conformed Articles	Approved	No Cost
39.1	Update Vol 1 SP 6 Insurance Requirements	Approved	No Cost
40.1	ADA Tactile Guidance Pathways	Approved	\$565,376.00
40.2	ADA Tactile – Color Change	Approved	No Cost
41	Parking for Florence/West Park & Ride	Approved	\$99,500.00
42	SC Edison Design Engineering	Approved	\$55,606.11
43	HVAC Repair/Replacement LAX IPMO	Approved	\$119,630.00
44	Fencing at ROW Cedar/Eucalyptus	Approved	\$8,695.00
45	Construct HDPE Geo membrane Cushion	Approved	\$697,495.00
46	Striping and Traffic Loops	Approved	\$19,041.13
47	CHP Support for Century Crush	Approved	\$46,566.84
48.2	35 Day Delay – Milestone	Approved	No Cost
49	Hazardous Material Parcels	Approved	\$52,420.00
50	UST Removal – Parcels SW-0103	Approved	\$51,827.00
51	UST Remv-Parcels HS2201/2206 CR3701	Approved	\$176,376.00
52	Update Roll-Up Grilles & Pay Phone	Approved	\$136,597.00
53	Contaminated Soil/Slurry	Approved	\$240,218.00
54	COI Design Serv. Century Crush	Approved	\$14,543.00
55	Security Guard – 24 hour Shifts	Approved	\$82,947.12
56	Station Architectural Standards	Approved	\$69,162.00
57	Millstone Revision Exercise Option 2A & 2B	Approved	No Cost
58.2	Design Extended Track	Approved	\$274,876.55
59	SP 24 Incorporating BAFO Changes	Approved	No Cost
60	Design Accommodations for 96 <sup>th</sup> St Sept 1,2, Part A	Approved	\$641,378.28
61.1	TIFA Certification Requirements	Approved	No Cost
62	Design Centinela Crossing/Eucalyptus	Approved	\$251,158.00
63	Design Harbor Sub At Grade Lighting	Approved	\$216,080.00
64	Removal of Contaminated Seg A Imperial	Approved	\$1,824.07
65	Capri AC Unit Replacement	Approved	\$22,191.89
66	Unknown UG Obstruction at MLK Phase	Approved	\$30,234.68
67	3rd Party (Conad) Repair on Victoria	Approved	\$1,592.63
68	LADWP Gate and Laydown	Approved	\$1,767.14
69.1	Revised Radio System Frequencies	Approved	\$6,222.00
70	Clarification of Radiating Cable and Assembly Parts	Canceled	Canceled
71	Aviation/Century Temp Sidewalk	Approved	\$18,207.00
72	Hazardous Material Removal at Parcel SW-010CR 3304	Approved	\$33,212.00

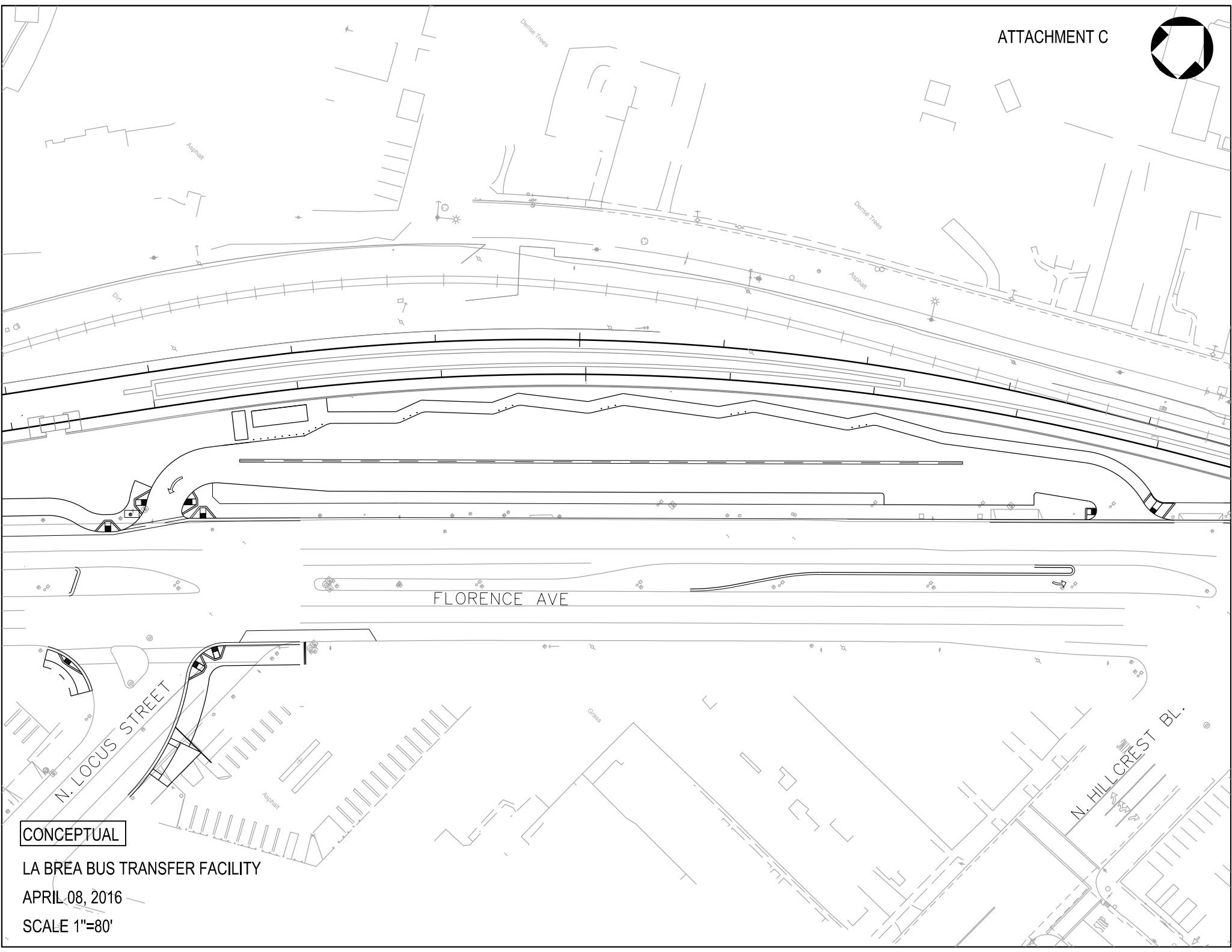
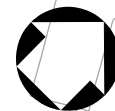


73	Dollar Rent A Car Facility Hazardous Material Removal	Approved	\$204,924.00
74	Access to Covered Manholes	Approved	\$200,000.00
75	Design Updated Station Customer Signage Directive Drawings	Approved	\$55,665.00
76	Capri Electrical-Surveillance Camera	Approved	\$19,649.58
77	Relocate LAWA Water Service – Design	Approved	\$50,702.00
78	African Drum Project Tree Removal	Approved	\$2,512.76
79	Update Vol. 1 Indefinite Qty Equipment	Approved	No Cost
80	Contaminated Drilling Slurry Century	Canceled	Canceled
81	Reroute Northrop Bent 1A	Approved	\$20,988.00
82	96th Station West Option Analysis	Approved	\$17,333.52
83	Additional Recurring of Properties	Approved	\$8,331.44
84	MIC Control System	Approved	\$1,076,736
85	Delete HS-2001 & 0.1 FM SP 16/17	Approved	No Cost
86	Fence Adjustment at MLK	Approved	\$10,011.21
87	Claim Resolution-Electric Mtrg Switchgear	Approved	\$610,300.00
88	Design 10" & 8" Abandon Lines Crenshaw	Approved	\$18,180.00
89	At Grade Station Ticketing Zone	Approved	\$70,074.00
90	Utility Investigation for 96th Street	Approved	\$35,808.21
91	Additional Security "Taste of Soul"	Approved	\$15,912.55
92	Abandoned 8" and 10" Pipe at Vernon Station	Approved	\$222,752.00
93	Daily Stand By Construction Zone 2/2A	Approved	\$90,000.00
94	Storage Trailer at the Arlington Yard	Approved	\$8,695.00
95	Unknown Concrete Slab Encounter at FCBC Facility	Approved	\$11,032.00
96	Electrical Ductbank Revisions at Exposition Station	Approved	\$541,193.00
97	Continuous Deflection Monitoring Greenline Counterweight Removal	Approved	\$155,461.00
98	Intrusion Detection Access Control Interface	Approved	\$65,926.00
99	16" Gas Pipe ACM Abatement Expo	Approved	\$17,972.98
100	Additional Rebar at Deck Panel	Approved	\$282,386.56
101	Security Guard for Crenshaw/LAX – Year 2	Approved	\$171,919.90
102	Cable Transmission System Update	Approved	\$65,517.00
102.1	Cable Transmission System Update – Add Diagrams	Approved	No Cost
103	Obstructions at Green Line Bent 3 and 4	Approved	\$30,821.00
104	Contaminated Soil – Multiple Locations	Approved	\$387,257.46
105	Century/Aviation Bridge Camera	Approved	\$9,719.00
106	Asbestos Testing Monitoring at Avis	Approved	\$1,894.00
107	Haz Mat Investigation Removal – Car Wash UST	Approved	\$14,541.73
108	Reconfiguration of Traffic Control Plan – La Brea	Approved	\$55,053.00
109	Cedar Encroachment Removal	Approved	\$17,566.00
110.2	Transmit LACMTA Lease Agreement and SWY Turnover Dates	Approved	\$26,533.00
111.1	Crenshaw Blvd. Tree and Landscaping	Approved	\$399,308.00
112	HNTB Design Costs for 96 <sup>th</sup> Street W. Alignment	Approved	\$922,997.00
113	Centinela Crossing Tree Preservation	Approved	\$45,450.00

114	Claim Resolution – DWP Vault Relocation MLK	Approved	\$125,614.66
115	Deletion of Public Phone	Approved	(\$59,315.19)
116	Harbor Sub Encasement Verification – Non Highlighted Utilities	Approved	\$94,240.13
117	Harbor Sub Encasement Verification – Unknown Utilities	Approved	\$159,743.78
118	Harbor Sub Encasement Verification – Highlighted Utilities	Approved	\$208,350.12
119	Encasement Verification – City of LA	Approved	\$45,448.78
120	Contaminated Oil Removal – UG1 FOG Lines	Approved	\$41,193.00
121	Florence/West Station – Redondo Blvd. Temporary Parking	Approved	\$35,000.00
122	ATC System at Slauson Signals	Approved	\$42,943.00
123	Track Drainage CI Pipe in Lieu of PVC	Approved	\$130,217.00
124	City of Inglewood Water Line Relocation	Approved	\$697,526.00
125	LKC Design W. Alignment Shift for 96 <sup>th</sup> Street	Approved	\$217,638.00
126.1	Provisional Sum – Unknown Utility	Pending	\$3,000,000.00
127.1	Modifications for 24" FAA Fiber Optic Duckbank at UG1	Approved	\$134,735.00
128	Greenline Safety Walkway – Design	Approved	\$44,068.00
129	Support of Excavation 2.0 Safety Factor	Approved	\$504,769.00
130	Unique 65 Foot Mast Arm at Aviation Blvd. and Century Blvd.	Canceled	Canceled
131	Unknown Obstructions at 405 Bridge Bent 2	Approved	\$63,480.00
132	Claim Resolution – Traffic Control at LADOT's	Approved	\$155,988.75
133	Design – Eliminate DWP Switchgear at MLK	Approved	\$51,410.00
134	Addition of LATS Time Synchronization	Approved	\$39,880.00
135	Updated Standard Wayside Rail Operation Signage	Approved	\$39,735.00
136	UG 1 Wayfinding – Design	Approved	\$68,548.00
137	LKC Design Accommodations 96 <sup>th</sup> Street, Step 2 part A	Approved	\$65,132.00
138	Claim Resolution – Install Video Detection Camera	Approved	\$27,216.00
139	Claim Resolution – ATSAC Fiber Optic Relocation at Expo	Approved	\$221,652.00
140	TPSS #10 Build-out, Power Drop and UG4 Fan Revision	Pending	\$259,244.53
141	Mitigation Reimbursement (Golf Carts)	Approved	\$14,853.90
142	Design- North Yard Lead Revisions	Approved	\$21,030.00
143	Line Removal at Florence and Isis in Conflict with Storm Drain Installation	Approved	\$4,483.00
144	Removal of Underground Storage Tanks at Florence Properties	Approved	\$69,486.57
145	Remove/Dispose/Burn Contaminated Soils from Expo	Approved	\$487,827.24
146	TPSS No. 2 Upgrade from 1.5 MW to 2.0 MW	Approved	\$46,802.00
147	Unknown Slab at 111 <sup>th</sup> and Aviation	Approved	\$6,746.00
148	Subsurface Investigation 317 E. Florence	Pending	\$30,087.60
149	Removal of Underground Storage Tank at Expo Yard Excavation	Approved	\$43,876.87
150	Gas Line in Pole Foundation at Arlington and MLK	Approved	\$2,489.41
151	Market Street Catch Basin Tie-in	Pending	\$14,010.00
152	Abandoned 8" and 10" Pipe Environmental Testing UG-4	Pending	\$417,000.00
153.1	Removal of the Track/Rail and Hump at Imperial and Aviation Blvd.	Pending	\$70,128.00
154	18in Sanitary Sewer Relocation at MSE Wall	Pending	\$614,133.00

155	Claim Resolution – TPSS #1 Relocation S. Imperial	Pending	\$91,252.00
156	Qwest Line Relocation	Pending	\$436,312.00
157	Delay Cost at CP-4	Pending	\$115,000.00
158	Vernon ATSAC Relocation	Pending	\$270,555.00
159	Claim Resolution – FAA LAWA Navid Light	Pending	\$125,000.00
160	Pothole & Remove 216in Gas Line	Pending	\$52,000.00
161	UG 1 Ventilation Fans	Pending	\$390,429.00
162	Tunneling Requirements	Pending	(\$5,534.40)
163	Claim Resolution – 104 St. Deck Lid – Design	Pending	\$62,000.00
165	Claim Resolution – SWY Removal of Electric Service	Pending	\$25,000.00
166	Claim Resolution – Metro Directed Fencing	Pending	\$35,228.80
167	Claim Resolution – Metro Directed Potholing	Pending	\$6,919.87
173	Florence/ La Brea Bus Transfer Station	Pending	\$2,200,000.00
TBD	W. Alignment Shift for 96 <sup>th</sup> Street Station Accommodations	Pending	\$7,400,000.00
Change Orders			
CO 30	Board Approved Station Name Change	NTE	\$10,000.00
CO 37.2	Design Hold Out Signals Aviation/Century	NTE	\$50,000.00
CO 38	Abandoned 8” and 10” Pipe Environmental Test and Removal (UG3)	NTE	\$362,500.00
CO 40	Relocate LAWA Water Service to 111 <sup>th</sup>	NTE	110,000.00
CO 41	Design Deluge System at Expo Crossover	NTE	\$0
CO 46.2	Underground Fire Rated Conduit Cable	NTE	\$200,000.00
CO 50.1	Turnback and Speed Restrictions	NTE	\$100,000.00
CO 51	Shut Down at MLK Station	Pending	\$60,000.00
CO 52	Habor Sub Potholing Unknown Utilities Eucalyptus	NTE	\$20,000.00
CO 53	Signal House Monitors	NTE	\$15,000.00
CO 58	Encasement Verification City of LA Sewer at Arbor Vitae	NTE	\$8,000.00
CO 59	Park Mesa Heights Median Exhibit Study	Canceled	Canceled
CO 60.1	Revise Street Plans at Hindry Avenue	NTE	\$21,600.00
CO 61	Park Mesa Heights Resequencing	NTE	\$300,000.00
CO 62	Encase City of LA Sanitary Sewers	NTE	\$100,000.00
CO 63.1	Civil Revisions for CPUC Striping at West Street	NTE	\$30,000.00
CO 64	Crenshaw Landscaped Median Rendering	NTE	\$50,000.00
CO 65	Removal/Disposal of Asbestos Pipe 255+30	NTE	\$2,000.00
CO 66	Removal and Disposal of Unknown Concrete at Redondo	NTE	\$5,000.00
CO 67	Ballast Wall Extension at Eucalyptus	NTE	\$12,500.00
CO 68	TPSS No.1 New Power Transmission	NTE	\$260,000.00
CO 69	Unknown 18inch Storm Drain UG-1	NTE	\$12,000.00
CO 71	Credit Crenshaw Tree Permit	NTE	No Cost
CO 72	Removal of 24in Storm Drain at MLK Station	NTE	\$100,000.00
CO 73	Tree Species and Bike Racks	NTE	\$8,000.00
CO 74	Pedestrian Lights Slauson Station	NTE	\$16,000.00
CO 75	Unknown Storm Drain Utility West Century	NTE	\$2,000.00

CO 76	LADOT Parking Lots Improvements	NTE	\$20,000.00
Subtotal – Approved Modifications & Change Orders			<b>\$21,843,793.38</b>
Subtotal – Pending Changes/Modifications			<b>\$15,668,765.40</b>
<b>Total Mods and Pending Changes (including this change)</b>			<b>\$37,512,558.78</b>
Prior CMA Authorized by the Board (including base award and other modifications)			<b>\$134,699,993.00</b>
Increased CMA for this recommended action			<b>\$2,200,000.00</b>
<b>Total CMA including this action</b>			<b>\$136,899,993.00</b>
<b>Remaining CMA for Future Changes</b>			<b>\$99,387,434.22</b>



FLORENCE AVE

N. LOCUST STREET

N. HILLCREST BL.

CONCEPTUAL

LA BREA BUS TRANSFER FACILITY

APRIL 08, 2016

SCALE 1"=80'

## DEOD SUMMARY

## CRENSHAW/LAX TRANSIT PROJECT / C0988

**A. (1) Small Business Participation – Design**

Walsh/Shea Corridor Constructors (WSCC) made a 20.59% Disadvantaged Anticipated Level of Participation (DALP) commitment for Design. DBE commitments were made to 10 DBE subcontractors at the time of award, and 10 additional DBE subcontractors have been added to-date. The current (DBE) participation is 25.61%.

<b>DISADVANTAGED BUSINESS ENTERPRISE ANTICIPATED LEVEL OF PARTICIPATION COMMITMENT</b>	DALP 20.59%	<b>DISADVANTAGED BUSINESS ENTERPRISE ANTICIPATED LEVEL OF PARTICIPATION</b>	DALP 25.61%
--	-------------	---	-------------

Item No.	Design DBE Subcontractors	% Commitment	Current <sup>1</sup> Participation	Ethnicity
1.	BA, Inc.	0.61%	0.95%	African American
2.	D'Leon Consulting Engineers	0.85%	1.48%	Hispanic American
3.	FPL and Associates, Inc.*	0.41%	0.36%	Asian Pacific American
4.	IDC Consulting Engineers, Inc.	0.94%	1.06%	Asian Pacific American
5.	Innovative Engineering Grp., Inc. *	0.23%	0.24%	Asian Pacific American
6.	Lynn Capouya	0.96%	1.09%	Non-Minority Women
7.	Martin & Libby	0.85%	0.92%	Non-Minority Women
8.	MGE Engineering	1.48%	2.12%	Asian Pacific American
9.	Mia Lehrer + Associates	0.51%	0.35%	Hispanic American
10.	NBA Engineering	0.72%	0.83%	Non-

				Minority Women
11.	Parikh Consultants	1.85%	2.89%	Asian Pacific American
12.	Sapphos Environmental *	0.02%	0.02%	Hispanic American
13.	Selbert Perkins Design Collaborative *	0.27%	0.32%	Non-Minority Women
14.	TEC Management *	0.41%	0.77%	African American
15.	Ted Tokio Tanaka Architects *	0.51%	0.54%	Asian Pacific American
16.	Togo Systems *	0.46%	0.78%	Asian Pacific American
17.	Universal Reprographics *	0.03%	0.14%	Non-Minority Women
18.	V&A, Inc.	9.25%	10.60%	Hispanic American
19.	YBI Management Services*	0.03%	0.02%	Hispanic American
20.	YEI Engineers *	0.20%	0.13%	Asian Pacific American
	<b>Total Commitment</b>	<b>20.59%</b>	<b>25.61%</b>	

<sup>1</sup>Current Participation = Total Actual amount Paid-to-Date to DBE firms ÷ Total Actual Amount Paid-to-date to Prime.

\* DBEs added after contract award

## **A. (2) Small Business Participation – Construction**

Walsh Shea Corridor Constructors (WSCC) made a 20% Disadvantaged Anticipated Level of Participation (DALP) commitment for Construction at the time of contract award, and made 5 DBE subcontract commitments. After the start of Construction, 43 DBE subcontractors were added. WSCC is currently achieving 9.96% of their proposed 20% DBE subcontract commitment for Construction. It is expected that DBE commitments will continue to increase as Construction progresses.

Based on the total amount paid-to-date to WSCC and the total actual amount paid-to-date to DBE subcontractors, current participation is 25.62%. WSCC is expected

to continue ongoing outreach and good faith efforts to meet their DBE contract commitment.

<b>DISADVANTAGED BUSINESS ENTERPRISE ANTICIPATED LEVEL OF PARTICIPATION COMMITMENT</b>	DALP 20%	<b>DISADVANTAGED BUSINESS ENTERPRISE ANTICIPATED LEVEL OF PARTICIPATION</b>	DALP 25.62%
--	----------	---	-------------

Item No.	Construction DBE Subcontractors	% Commitment	Current <sup>1</sup> Participation	Ethnicity
1.	Ace Fence Company*	0.03%	0.09%	Hispanic American
2.	Advantage Demolition & Grading*	0.01%	0.02%	African American
3.	Alameda Construction*	0.06%	0.16%	African American
4.	Analysis & Solution Consultants*	0.04%	0.08%	African American
5.	Anytime Dumping*	0.68%	1.17%	African American
6.	B&B Diversified Materials*	0.26%	0.76%	Asian Pacific American
7.	Bravo Pacific*	1.68%	1.04%	Hispanic American
8.	C Bass Dirtyworks*	0.03%	0.09%	African American
9.	Clean Up America*	0.04%	0.11%	African American
10.	Coast Surveying	0.25%	0.24%	Hispanic American
11.	Coleman Construction*	0.03%	0.10%	African American
12.	CPR Trucking	0.20%	0.06%	Hispanic American
13.	DC Engineering Group*	0.01%	0.20%	Sub-Continent Asian American



14.	Davis Blue Print Co., Inc.*	0.00%	0.01%	Hispanic American
15.	DCD Electric*	0.07%	0.46%	African American
16.	Deco Pave*	0.01%	0.07%	Asian Pacific American
17.	Deborah Dyson Electrical Contractor*	0.00%	0.01%	African American
18.	E-Nor Innovations*	0.06%	0.18%	African American
19.	EW Corporation*	0.01%	7.67%	Hispanic American
20.	Excelsior Elevator Corporation*	0.62%	0.27%	Asian Pacific American
21.	Fine Grade Equipment*	0.02%	0.01%	Native American
22.	Flores Construction*	0.00%	0.01%	Hispanic American
23.	G & C Equipment Corporation*	1.92%	6.36%	African American
24.	G.O. Rodriguez*	0.00%	0.01%	Hispanic American
25.	GW Civil Constructors, Inc.*	0.32%	0.80%	African American
26.	Integrity Rebar Placers*	2.54%	2.94%	Hispanic American
27.	Lowers Welding and Fabrication, Inc.*	0.02%	0.57%	Non-Minority Female
28.	Morgner Construction Management*	0.07%	0.12%	Hispanic American
29.	Nextline Protection Services *	0.03%	0.32%	African American
30.	Pacrim Engineering*	0.00%	0.00%	Asian Pacific American
31.	Padilla & Associates	0.15%	0.36%	Hispanic American
32.	Quality Engineering, Inc.	0.31%	0.32%	African American
33.	Robnett Electric, Inc.*	0.00%	0.01%	African American
34.	RJ Lalonde, Inc.*	0.00%	0.00%	Non-Minority Women

35.	RJ Safety Supply Co.*	0.00%	0.00%	Non-Minority Women
36.	Safeprobe*	0.02%	0.04%	Asian Pacific
37.	Sapphos Environmental	0.05%	0.08%	Hispanic American
38.	Soteria Company (Griego and Associates)	0.10%	0.13%	Hispanic American
39.	South Coast Sweeping*	0.12%	0.21%	Non-Minority Women
40.	The Jungle Nursery*	0.01%	0.00%	Hispanic American
41.	Thomas Land Clearing*	0.03%	0.16%	African American
42.	TEC Management Consulting*	0.02%	0.02%	African American
43.	Titan Disposal*	0.03%	0.00%	African American
44.	Treesmith Enterprises*	0.02%	0.06%	Hispanic American
45.	Universal Reprographics, Inc.*	0.00%	0.03%	Non-Minority Women
46.	V&A, Inc.*	0.07%	0.16%	Hispanic American
47.	VMA Communications	0.04%	0.10%	Hispanic American
48.	YBI Management Services*	0.00%	0.01%	Hispanic American
	<b>Total Commitment</b>	<b>9.96%</b>	<b>25.62%</b>	

<sup>1</sup> Current Participation = Total Actual amount Paid-to-Date to DBE firms ÷ Total Actual Amount Paid-to-date to Prime.

\* DBEs added after contract award

## **B. Project Labor Agreement / Construction Careers Policy (PLA/CCP)**

The Contractor has committed to complying with PLA/CCP requirements for this project. This project is 53.92% complete which represents the number of construction labor hours worked to date divided by the total projected labor hours for the project. The contractor is achieving the 40% Targeted Worker Goal at 58.72% not achieving the 20% Apprentice Worker Goal at 18.27%, and achieving the Disadvantaged Worker Goal at 11.54%. Contractor provided an Employment Hiring Plan that the Apprentice Worker goal will be fully achieved by Mid-2017. Staff will continue to monitor and report the contractor's progress toward meeting the goals of the PLA/CCP.

**C. Prevailing Wage Applicability**

Prevailing Wage requirements are applicable to this project. DEOD will continue to monitor contractors' compliance with the State of California Department of Industrial Relations (DIR), California Labor Code, and, if federally funded, the U S Department of Labor (DOL) Davis Bacon and Related Acts (DBRA).

**D. Living Wage Service Contract Worker Retention Policy**

Living wage is not applicable to this modification.