

**Board Report**

File #: 2017-0013, **File Type:** Program**Agenda Number:** 16

**REVISED
SYSTEM SAFETY, SECURITY AND OPERATIONS COMMITTEE
EXECUTIVE MANAGEMENT COMMITTEE
MAY 18, 2017**

SUBJECT: METRO PUBLIC ART STATE OF GOOD REPAIR REPORT AND PHASED APPROACH TO ART ASSET MANAGEMENT

ACTION: ~~RECEIVE AND FILE~~ APPROVE PHASED APPROACH TO ART ASSET MANAGEMENT

RECOMMENDATION

APPROVE a phased approach to art asset management in response to October 2015 Board Motion (Attachment A).

ISSUE

At the October 2015 meeting, the committee directed staff to a) provide an annual report on the state of Metro's public artworks, b) dedicate a reasonable amount of funds towards maintenance and/or restoration of Metro's public artworks, c) include conservation and/or restoration of existing artworks in all future refurbishment projects, d) budget for maintenance of new artworks as they come online, e) create a regular maintenance plan for each Metro artwork, f) develop an action plan to restore Metro artworks that are not functioning as intended, including the restoration of artwork altered by the Blue Line Upgrades Project. This report provides the requested response.

DISCUSSION

There are currently over 165 permanent artworks installed in Metro stations and facilities throughout the Los Angeles County and these artworks are an important part of the customer experience. While Operations staff regularly removes dust, dirt and debris from a number of artworks as part of their general station cleaning, the majority of the public artworks in the Metro system require special attention and care due to their unique nature and location (Attachment B).

Phased Artwork Maintenance Plan for Existing Lines

A phased approach to artwork maintenance and ongoing asset management is underway. Per Board direction, Metro began to address the backlog of deferred conservation and maintenance in FY17. The focus and priority has been on the Blue Line. Funds to replace artworks removed/altered by the Blue Line Upgrade Project have been secured and a proposal to refurbish the long non-functioning artwork in the Blue Line tunnel is under consideration as a FY18 Capital Project. A dedicated staff

person is assigned to Blue Line art asset management and has initiated artwork repairs, refurbishments and replacements. This staff member also is developing artwork inventories, condition assessments, and catalogued art documentation as well as preparing comprehensive care and maintenance plans tailored to each of the line's unique artworks. Consultants, including artists, conservators, fabricators and other specialized technicians assist with this work. Metro Art is now implementing regular ongoing Blue Line art asset care and management to ensure the artworks are kept in a state of good repair moving forward.

The next line being phased into a regular art asset management plan is the Red Line, which turns 25 this year. Staff will develop a phased plan to begin art asset management on the Red Line, including a request for additional staff resources in FY19 to address artwork repairs and refurbishments as well as annual inspections, care, and maintenance for the wide range of artworks along the line. Resources for the Green and Gold Lines will be requested as they reach their 20-25 year anniversaries, in FY 21 for the Green Line and FY23 for the Gold Line, as outlined in Attachment B.

There are several benefits to this phased line-by-line approach. With a large art program of 165 projects throughout the system, it allows staff to focus on the oldest art on the system first, and grow the Art Asset Management Program over time as resources are secured. Having a dedicated staff person assigned to care for all of the artworks on a particular line provides clear roles and responsibilities and follows the process of how Operations assigns their staff. Art Asset Project Managers will work directly with the broader Operations team to address site specific needs. They will also work directly with Construction staff to ensure retrofits and station modifications do not negatively impact the artworks as has occurred in the past.

New Lines

In the future, when new lines become operational, art asset management resources should be established along with Operations staff and resource plans in order to ensure appropriate care and art asset management from the onset. Metro has traditionally only funded art program staff for capital project delivery and not for ongoing operational purposes. For example, when the Expo 2 and Foothill Extensions were opened, none of the positions included in the operations staffing plan were allocated to oversee and implement art asset management. Moving forward, staffing resources will be essential to care for the significant number of artworks that will be added to the system through new lines and facilities. As with other assets, once an artwork has fallen into disrepair, its deterioration accelerates and the cost of restoration increases, so it is best to manage that asset as it enters into service.

NEXT STEPS

Staff will continue to pursue a phased art asset management approach and will work to ensure the aesthetic integrity and longevity of the systems art assets as resourced. Staff will work cross-departmentally to apply lessons learned and to ensure that care and management of artworks is included in future operational start up plans. As directed by the Board, staff will provide an annual report on the state of the agency's artworks.

ATTACHMENTS

Attachment A - October 2015 Board Directive

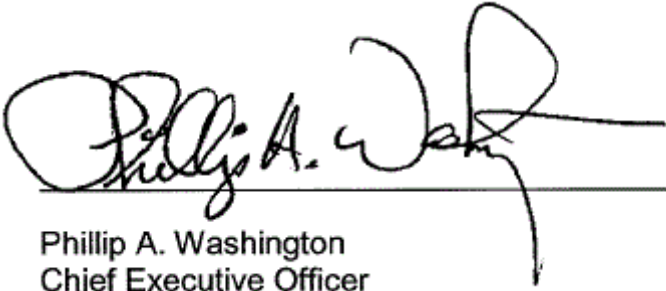
Attachment B - Metro Public Art Collection Asset Condition Report

Attachment C - Examples of Artwork in Need of Repair or Refurbishment

Attachment D - Art Asset Management Board Report Presentation

Prepared by: Maya Emsden, Deputy Executive Officer (213) 922-2720

Reviewed by: Pauletta Tonilas, Chief Communications Officer, (213) 922-3777



Phillip A. Washington
Chief Executive Officer

MOTION BY:

**DIRECTOR JACQUELYN DUPONT-WALKER, SUPERVISOR SHEILA KUEHL
AND DIRECTOR JOHN FASANA**

MTA Operations Committee

October 15, 2015

Item 44: MTA Public Art

MTA's public art is an important part of the customer experience.

Public art that is maintained in a state of good repair reinforces the fact that MTA is caring for its system and cares about the experience of its customers.

Conversely, public art that is not in a state of good repair reinforces a perception that MTA is not caring for its system and does not have regard for the experience of its customers.

The first public art in the MTA system was installed in 1991, nearly 25 years ago. Today, MTA has a total of 152 public artworks across all of its rail lines, Union Station, the Gateway Center complex, Division 9, Division 13, and other locations.

Currently, 19 of MTA's 152 public artworks are not functioning as intended due to various factors, including vandalism, electrical failure, and capital projects.

I, THEREFORE, MOVE that the Board instruct the CEO to:

- A. Provide an annual report on the state of MTA's public artworks.
- B. Beginning with the Fiscal Year 2017 budget, dedicate a reasonable amount of funds towards maintenance and/or restoration of MTA public artworks.
- C. Include conservation and/or restoration of existing MTA public artworks in all future line, station, and facility refurbishment projects.
- D. Budget additional funds as needed for maintenance of new MTA public artworks, such as artwork on the Expo Line Phase 2 and Gold Line Foothill Extension.
- E. Create a regular maintenance plan for each MTA public artwork.

CONTINUED

F. Develop an action plan to restore MTA public artworks that are not functioning as intended, including consideration of using remaining Blue Line Upgrades Project funding for the restoration of artwork altered by the Blue Line Upgrades Project.

G. Report back on all the above during the February 2016 MTA Board cycle.

###

Metro Public Art Collection Asset Report

Metro Blue Line					
Station	Artist / Artwork Title / Components	Year Installed	Annual Maintenance Requirements	Condition Status	FY18 Action Plan
1	Blue Line Tunnel <i>Thomas Eatherton</i> <i>Unity</i> LED light sculpture installations	1991	NA	Not functioning as intended. Electronic artwork requires refurbishment of 82 lightworks.	FY18 Capital Budget has been requested to replace fiber-optic artwork with new, more efficient LED panels.
2	Wardlow <i>Jacqueline Dreager</i> <i>Great Gathering Place</i> Fiberglass, bronze and steel sculptures; Concrete and steel stools; Glass medallion with imagery	1992	Conduct detailed annual artwork inspection and cleaning. Document conditions. Biennial application of gel-coat and wax at fiberglass and bronze elements. Specialized or minor repairs when needed.	Fiberglass artwork sculptural elements are deteriorating.	Perform annual artwork inspections. Document artwork and produce detailed condition and corrective action report. Clean and apply gel-coat and wax at fiberglass and bronze elements
3	7th Street / Metro Center <i>Joyce Kozloff</i> <i>The Movies: Fantasies and Spectacles</i> Ceramic tile murals	1993	Conduct detailed annual artwork inspection and cleaning. Document conditions. Biennial application of sealant along grout. Specialized or minor repairs when needed.	Ceramic artwork tile is damaged.	Perform annual artwork inspections. Document artwork and produce detailed condition and corrective action report. Implement minor repairs, clean and seal grout.
4	7th Street / Metro Center <i>Roberto Gil de Montes</i> <i>Heaven to Earth</i> Ceramic tile murals	1993	Conduct detailed annual artwork inspection and cleaning. Document conditions. Biennial application of sealant along grout. Specialized or minor repairs when needed.	Ceramic artwork tile is damaged.	Perform annual artwork inspections. Document artwork and produce detailed condition and corrective action report. Implement minor repairs, clean and seal grout.
5	Pico <i>Robin Brailsford</i> <i>Time and Presence</i> Painted steel canopy panels	1993	Conduct detailed annual artwork inspection and cleaning. Document conditions. Biennial application of coatings. Specialized or minor repairs when needed.	Paint at artwork panels is fading.	Perform annual artwork inspections. Document artwork and produce detailed condition and corrective action report. Clean and re-coat panels.
6	San Pedro Street <i>Sandra Rowe</i> <i>Hope, Dream, Path, Focus, Belief</i> Patinated, etched, pigmented waxed bronze panels; stainless steel kinetic sculptures	1993	Conduct detailed annual artwork inspection, documentation and cleaning. Biennial application of sealant. Specialized or minor repairs when needed.	Paint at artwork panels has faded. Kinetic elements are damaged.	Perform annual artwork inspections. Document artwork and produce detailed condition and corrective action report. Clean and re-coat panels, repair kinetic elements.
7	Willowbrook / Rosa Parks <i>Joe Sam</i> <i>Hide-n-Seek</i> Painted steel sculpture	1993	Conduct detailed annual artwork inspection and cleaning. Document conditions. Biennial application of coatings. Specialized or minor repairs when needed.	Sculptures have sustained pigeon damage and paint has faded.	Perform annual artwork inspections. Document artwork and produce detailed condition and corrective action report. Clean and re-coat sculptures.
8	Grand / LATT <i>Mark Lere</i> <i>Who, What, Where?</i> Etched and paint filled granite tile paving; etched and paint filled concrete	1994	Completely removed as a result of Blue Line refurbishment Project. CP in place with Artist to replace artwork.	Artwork completely removed during Metro Blue Line Refurbishment Project.	Manage Artist contract to replace artwork. Scheduled completion FY18.
9	Vernon <i>Horace Washington</i> <i>A Tribute to Industry</i> Bronze and powder coated steel stools; galvanized steel benches; stainless steel and painted steel sculpture; ceramic tile	1994	Conduct detailed annual artwork inspection, documentation and cleaning. Biennial application of sealant. Specialized or minor repairs when needed.	Paint at artwork panels is fading.	Perform annual artwork inspections. Document artwork and produce detailed condition and corrective action report. Clean and re-coat sculptures, clean and seal grout tile.
10	103rd Street / Watts Towers <i>Roberto Salas</i> <i>Blue Line Totems in Red</i> Painted steel columns; ceramic tile	1994	Partially removed as a result of Blue Line refurbishment Project. CP in place with Artist to replace artwork.	Artwork partially removed during Metro Blue Line Refurbishment Project.	Manage Artist contract to replace artwork. Scheduled completion FY18.

Metro Blue Line					
Station	Artist / Artwork Title / Components	Year Installed	Annual Maintenance Requirements	Condition Status	FY18 Action Plan
11	Pacific Coast Highway <i>Joe Lewis</i> <i>Twelve Principals</i> Ceramic tile medallions	1994	Conduct detailed annual artwork inspection and cleaning. Document conditions. Biennial application of sealant along grout. Specialized or minor repairs when needed.	Artwork medallions require cleaning.	Perform annual artwork inspections. Document artwork and produce detailed condition and corrective action report. Implement minor repairs, clean and seal grout.
12	Anaheim Street Terry Braunstein <i>Local Odysseys</i> Porcelain enamel medallions	1994	Conduct detailed annual artwork inspection and cleaning. Document conditions. Specialized or minor repairs when needed.	Artwork medallions require cleaning.	Perform annual artwork inspections. Document artwork and produce detailed condition and corrective action report. Implement minor repairs and clean.
13	Slauson East Los Streetscapers <i>South Central Suite</i> Porcelain enamel panels; ceramic tile and pigmented concrete and ceramic tile murals	1995	Conduct detailed annual artwork inspection and cleaning. Document conditions. Biennial application of sealant along grout. Specialized or minor repairs when needed.	Ceramic artwork tile is damaged.	Perform annual artwork inspections. Document artwork and produce detailed condition and corrective action report. Implement minor repairs, clean and seal grout.
14	Compton Eva Cockcroft <i>Past, Present and Future</i> Ceramic tile panels; ceramic tile columns	1995	Conduct detailed annual artwork inspection and cleaning. Document conditions. Biennial application of sealant along grout. Specialized or minor repairs when needed.	Ceramic artwork tile is damaged.	Perform annual artwork inspections. Document artwork and produce detailed condition and corrective action report. Implement minor repairs, clean and seal grout.
15	5th Street Jim Isermann <i>Failed Ideals</i> Stain glass medallions	1995	Partially removed as a result of Blue Line refurbishment Project. CP in place with Artist to replace artwork.	Artwork partially removed during Metro Blue Line Refurbishment Project.	Manage Artist contract to replace artwork. Scheduled completion FY18.
16	1st Street Paul Tzanetopoulos <i>Breezy and Delightful</i> Porcelain enamel kinetic medallions	1995	Conduct detailed annual artwork inspection, documentation and cleaning. Biennial application of coatings and sealant. Specialized or minor repairs when needed.	Artwork medallions require cleaning. Kinetic elements are damaged.	Perform annual artwork inspections. Document artwork and produce detailed condition and corrective action report. Clean medallions panels, repair kinetic elements.
17	Downtown Long Beach Patrick Mohr <i>Angel Train</i> Anodized aluminum sculptures	1995	Conduct detailed annual artwork inspection and cleaning. Document conditions. Biennial application of sealant and wax. Specialized or minor repairs when needed.	Artwork requires cleaning and application of wax sealant.	Perform annual artwork inspections. Document artwork and produce detailed condition and corrective action report. Clean and apply sealant and wax.
18	Pacific Ave June Edmonds <i>We Know Who We Are</i> Glass mosaic medallions	1995	Conduct detailed annual artwork inspection and cleaning. Document conditions. Biennial application of sealant along grout. Specialized or minor repairs when needed.	Artwork medallions require cleaning.	Perform annual artwork inspections. Document artwork and produce detailed condition and corrective action report. Clean and apply sealant to grout.
19	Artesia Lynn Aldrich <i>Blue Line Oasis</i> Stainless steel and ceramic sculpture; glass mosaic tile, painted steel wishing well; glass mosaic panels	1996	Conduct detailed annual artwork inspection and cleaning. Document conditions. Biennial application of sealant along grout. Specialized or minor repairs when needed.	Ceramic, glass mosaic panels and sculpture are damaged.	Perform annual artwork inspections. Document artwork and produce detailed condition and corrective action report. Implement minor repairs, clean and apply sealant to grout.
20	Washington Elliot Pinkney <i>Running for the Blue Line</i> Painted steel panels; painted columns	1997	Conduct detailed annual artwork inspection and cleaning. Document conditions. Biennial application of coatings. Specialized or minor repairs when needed.	Paint has failed at artwork panels. Painted columns incorrectly painted system color.	Perform annual artwork inspections. Document artwork and produce detailed condition and corrective action report. Clean and re-coat sculptures.
21	Del Amo Colin Gray <i>Del Amo Wheel</i> Glass fiber reinforced concrete sculpture	1999	Conduct detailed annual artwork inspection, documentation and cleaning. Biennial application of coatings and sealant. Specialized or minor repairs when needed.	Visible graffiti and minor cracking at artwork surface.	Perform annual artwork inspections. Document artwork and produce detailed condition and corrective action report. Implement minor repairs, clean and apply sealant.

Metro Blue Line					
Station	Artist / Artwork Title / Components	Year Installed	Annual Maintenance Requirements	Condition Status	FY18 Action Plan
22	7th Street / Metro Center Rotating Artist <i>Rotating Photo Installations</i> Anodized aluminum, plexiglass, duratrans film	2001	Conduct detailed annual artwork inspection, documentation and cleaning. Annual cleaning and replacement of bulbs at the time of artwork rotation.	Ballast and polycarbonate require replacement.	Perform annual artwork inspections. Document artwork and produce detailed condition and corrective action report. Clean, replace polycarbonate facing, replace light bulbs, rotate artwork.
23	7th Street / Metro Center K. Kobayashi, N. Korten & M. Perlas <i>Plantings</i> Pigmented concrete benches; cast aluminum, painted steel, gobos and electrical components	2002	Conduct detailed annual artwork inspection and cleaning. Document conditions. Specialized cleaning of gobos and electrical components, replacement of lighting. Biennial application of sealant. Minor repairs when needed.	All projection units are broken. Electrical is outdated and not functioning as intended. Expo Rail Line impacts altered artwork location.	Perform annual artwork inspections. Document artwork and produce detailed condition and corrective action report. Implement minor repairs, clean and apply sealant to grout.
24	Willowbrook / Rosa Parks <i>Michael Massenburg, Robin Strayhorn</i> <i>Pathways To Freedom</i> Glass mosaic, ceramic tile and concrete benches	2002	Conduct detailed annual artwork inspection and cleaning. Document conditions. Biennial application of sealant along grout. Specialized or minor repairs when needed.	Benches are damaged.	Perform annual artwork inspections. Document artwork and produce detailed condition and corrective action report. Implement minor repairs, clean and apply sealant to grout.
25	Firestone Ricardo Mendoza <i>The Will to Progress</i> Ceramic tile mural panels	2004	Conduct detailed annual artwork inspection and cleaning. Document conditions. Biennial application of sealant along grout. Specialized or minor repairs when needed.	Ceramic artwork tile is damaged.	Perform annual artwork inspections. Document artwork and produce detailed condition and corrective action report. Implement minor repairs, clean and seal grout.
26	Florence Ricardo Duffy <i>A Florence Moment</i> Ceramic tile murals	2005	Conduct detailed annual artwork inspection and cleaning. Document conditions. Biennial application of sealant along grout. Specialized or minor repairs when needed.	Ceramic artwork tile requires cleaning.	Perform annual artwork inspections. Document artwork and produce detailed condition and corrective action report. Clean and seal grout.
27	Willow Merge Conceptual Design <i>Out of Sight</i> Glass canopy with laminated imagery, GFRC bench	2006	Conduct detailed annual artwork inspection, documentation and cleaning. Biennial application of sealant. Specialized or minor repairs when needed.	Bench is damaged.	Perform annual artwork inspections. Document artwork and produce detailed condition and corrective action report. Implement minor repairs, clean and seal.
28	Willowbrook / Rosa Parks Judy Baca <i>Metate Bench</i> GFRC benches with ceramic tile	2008	Conduct detailed annual artwork inspection, documentation and cleaning. Biennial application of sealant. Specialized or minor repairs when needed.	Bench is damaged.	Perform annual artwork inspections. Document artwork and produce detailed condition and corrective action report. Implement minor repairs, clean and seal.

Metro Red Line					
Station	Artist / Artwork Title / Components	Year Installed	Annual Maintenance Requirements	Condition Status	FY19 Proposed Action Plan
29	Union Station Christopher Sproat <i>Union Chairs</i> Granite benches	1993	Conduct detailed annual artwork inspection and develop condition report. Document conditions and develop Maintenance Requirements. Specialized or minor repairs when needed.	Graffiti etchings at granite benches. Artwork is grimy, in need of cleaning.	Perform detailed annual artwork inspection and documentation, develop a condition and corrective action report, and manage implementation of specialized cleaning, repairs and conservation. Will require new FTE to manage Red Line art assets.
30	Union Station Terry Schoonhoven <i>Traveler</i> Ceramic tile mural	1993	Conduct detailed annual artwork inspection, documentation and cleaning. Biennial application of coatings and sealant. Specialized or minor repairs when needed.	Artwork is grimy, in need of cleaning.	Perform detailed annual artwork inspection and documentation, develop a condition and corrective action report, and manage implementation of specialized cleaning, repairs and conservation. Will require new FTE to manage Red Line art assets.
31	Union Station Cynthia Carlson <i>LA: City of Angels</i> Hand painted mural with reliefs	1993	Conduct detailed annual artwork inspection and cleaning. Document conditions. Biennial application of gel-coat and wax at fiberglass and bronze elements. Specialized or minor repairs when needed.	Artwork mural requires lighting.	Perform detailed annual artwork inspection and documentation, develop a condition and corrective action report, and manage implementation of specialized cleaning, repairs and conservation. Will require new FTE to manage Red Line art assets.
32	Civic Center / Grand Park Johnathan Borofsky <i>I Dreamed I Could Fly</i> Hand painted fiberglass sculpture; audio playback system; spotlights	1993	Conduct detailed annual artwork inspection, documentation and cleaning. Biennial application of coatings and software update at audio component. Specialized or minor repairs when needed.	Artwork is grimy, in need of cleaning and lighting replacement. Audio component requires software update.	Perform detailed annual artwork inspection and documentation, develop a condition and corrective action report, and manage implementation of specialized cleaning, repairs and conservation. Will require new FTE to manage Red Line art assets.
33	Pershing Square Stephen Antonakos <i>Neons for Pershing Square</i> Neon sculptures	1993	Conduct detailed annual artwork inspection, documentation and cleaning. Biennial replacement of Neon Transformers. Specialized or minor repairs when needed.	Artwork is grimy, in need of cleaning. Neon transformers are in need of replacement.	Perform detailed annual artwork inspection and documentation, develop a condition and corrective action report, and manage implementation of specialized cleaning, repairs and conservation. Will require new FTE to manage Red Line art assets.
34	Westlake / MacArthur Park Francisco Letelier <i>El Sol/La Luna</i> Ceramic tile murals	1993	Conduct detailed annual artwork inspection, documentation and cleaning. Biennial application of coatings and sealant. Specialized or minor repairs when needed.	Water intrusion at station at walls impacting Artwork mural. Artwork is grimy, in need of cleaning and sealant.	Perform detailed annual artwork inspection and documentation, develop a condition and corrective action report, and manage implementation of specialized cleaning, repairs and conservation. Will require new FTE to manage Red Line art assets.
35	Westlake / MacArthur Park Therman Statom <i>Into the Light</i> Glass skylight; acrylic, aluminum, stainless steel and painted steel sculptures; ceramic tile	1993	Conduct detailed annual artwork inspection, documentation and cleaning. Biennial replacement of lighting. Specialized or minor repairs when needed.	Artwork is grimy, in need of cleaning and lighting replacement.	Perform detailed annual artwork inspection and documentation, develop a condition and corrective action report, and manage implementation of specialized cleaning, repairs and conservation. Will require new FTE to manage Red Line art assets.
36	Vermont / Santa Monica Robert Millar <i>Untitled</i> Text painted on walls throughout; aluminum and polycarbonate panels; colored lighting	1993	Conduct detailed annual artwork inspection, documentation and cleaning. Biennial application of coatings and sealant. Specialized or minor repairs when needed.	Lighting component (entrance lighting) is outdated and requires complete renovation. Artwork is grimy, in need of cleaning.	Perform detailed annual artwork inspection and documentation, develop a condition and corrective action report, and manage implementation of specialized cleaning, repairs and conservation. Will require new FTE to manage Red Line art assets.
37	Wilshire / Vermont Peter Shire <i>Los Angeles Seen</i> Painted steel and stainless steel sculptures	1996	Conduct detailed annual artwork inspection, documentation and cleaning. Biennial application of coatings and sealant. Specialized or minor repairs when needed.	Kinetic motorized component not working. Artworks in need of major cleaning.	Perform detailed annual artwork inspection and documentation, develop a condition and corrective action report, and manage implementation of specialized cleaning, repairs and conservation. Will require new FTE to manage Red Line art assets.

Metro Red Line					
Station	Artist / Artwork Title / Components	Year Installed	Annual Maintenance Requirements	Condition Status	FY19 Proposed Action Plan
38	Vermont / Beverly George Stone <i>Untitled</i> Glass fiber reinforced concrete sculptural rock formations	1999	Conduct detailed annual artwork inspection, documentation and cleaning. Biennial application of coatings and sealant. Specialized or minor repairs when needed.	Graffiti damage. Artwork is grimy, in need of cleaning and lighting replacement.	Perform detailed annual artwork inspection and documentation, develop a condition and corrective action report, and manage implementation of specialized cleaning, repairs and conservation. Will require new FTE to manage Red Line art assets.
39	Vermont / Sunset Michael Davis <i>Ecliptic/Illume</i> Porcelain, stainless steel, illumination	1999	Conduct detailed annual artwork inspection, documentation and cleaning. Biennial application of coatings and sealant. Specialized or minor repairs when needed.	Lighting component is not functioning. Artwork is grimy, in need of cleaning.	Perform detailed annual artwork inspection and documentation, develop a condition and corrective action report, and manage implementation of specialized cleaning, repairs and conservation. Will require new FTE to manage Red Line art assets.
40	Hollywood / Western May Sun <i>Untitled</i> Painted aluminum and polycarbonate sculptures; lighting; terrazzo and copper paving murals; etched granite; patinated bronze; ceramic tile throughout	1999	Conduct detailed annual artwork inspection, documentation and cleaning. Biennial replacement of lighting and application of coatings and sealant. Specialized or minor repairs when needed.	Graffiti damage. Artwork is grimy, in need of cleaning and lighting replacement.	Perform detailed annual artwork inspection and documentation, develop a condition and corrective action report, and manage implementation of specialized cleaning, repairs and conservation. Will require new FTE to manage Red Line art assets.
41	Hollywood / Vine Gilbert "Magu" Lujan <i>Hooray for Hollywood</i> Painted fiberglass and pigmented concrete benches, hand painted ceramic tiles	1999	Conduct detailed annual artwork inspection, documentation and cleaning. Biennial replacement of lighting and application of coatings and sealant. Specialized or minor repairs when needed.	All platform sculptural elements damaged and removed.	Perform detailed annual artwork inspection and documentation, develop a condition and corrective action report, and manage implementation of specialized cleaning, repairs and conservation. Will require new FTE to manage Red Line art assets.
42	Hollywood / Highland Sheila Klein <i>Underground Girl</i> Painted aluminum fixtures, electrical; aluminum and stainless sculpture	2000	Conduct detailed annual artwork inspection, documentation and cleaning. Biennial replacement of lighting and application of coatings and sealant. Specialized or minor repairs when needed.	Electronic artwork not working. Artwork is grimy, in need of cleaning and lighting replacement.	Perform detailed annual artwork inspection and documentation, develop a condition and corrective action report, and manage implementation of specialized cleaning, repairs and conservation. Will require new FTE to manage Red Line art assets.
43	Universal City / Studio City Margaret Garcia <i>Tree of Califas</i> Carved ceramic tile; stainless steel, painted steel and granite benches; laminated imagery	2000	Conduct detailed annual artwork inspection, documentation and cleaning. Biennial application of coatings and sealant. Specialized or minor repairs when needed.	Artwork is grimy, in need of cleaning and sealant.	Perform detailed annual artwork inspection and documentation, develop a condition and corrective action report, and manage implementation of specialized cleaning, repairs and conservation. Will require new FTE to manage Red Line art assets.
44	North Hollywood Anne Marie Karlsen <i>Kaleidoscope Dreams</i> Ceramic tile	2000	Conduct detailed annual artwork inspection, documentation and cleaning. Biennial replacement of lighting and application of coatings and sealant. Specialized or minor repairs when needed.	Graffiti damage. Artwork is grimy, in need of cleaning and lighting replacement.	Perform detailed annual artwork inspection and documentation, develop a condition and corrective action report, and manage implementation of specialized cleaning, repairs and conservation. Will require new FTE to manage Red Line art assets.
45	7th Street / Metro Center Rotating Artist <i>Rotating Photo Installations</i> Anodized aluminum, plexiglass, duratrans film	2001	Conduct detailed annual artwork inspection, documentation and cleaning. Annual cleaning and replacement of bulbs at the time of artwork rotation.	Ballast and polycarbonate require replacement.	Perform detailed annual artwork inspection and documentation, develop a condition and corrective action report, and manage implementation of specialized cleaning, repairs and conservation. Will require new FTE to manage Red Line art assets.
46	Vermont / Beverly Rotating Artist <i>Rotating Photo Installations</i> Anodized aluminum, plexiglass, duratrans film	2001	Conduct detailed annual artwork inspection, documentation and cleaning. Annual cleaning and replacement of bulbs at the time of artwork rotation.	Ballast and polycarbonate require replacement.	Perform detailed annual artwork inspection and documentation, develop a condition and corrective action report, and manage implementation of specialized cleaning, repairs and conservation. Will require new FTE to manage Red Line art assets.

Metro Red Line					
Station	Artist / Artwork Title / Components	Year Installed	Annual Maintenance Requirements	Condition Status	FY19 Proposed Action Plan
47	Hollywood / Highland Rotating Artist <i>Rotating Photo Installations</i> Anodized aluminum, plexiglass, duratrans film	2001	Conduct detailed annual artwork inspection, documentation and cleaning. Annual cleaning and replacement of bulbs at the time of artwork rotation.	Ballast and polycarbonate require replacement.	Perform detailed annual artwork inspection and documentation, develop a condition and corrective action report, and manage implementation of specialized cleaning, repairs and conservation. Will require new FTE to manage Red Line art assets.
48	Universal City / Studio City Rotating Artist <i>Rotating Photo Installations</i> Anodized aluminum, plexiglass, duratrans film	2001	Conduct detailed annual artwork inspection, documentation and cleaning. Annual cleaning and replacement of bulbs at the time of artwork rotation.	Ballast and polycarbonate require replacement.	Perform detailed annual artwork inspection and documentation, develop a condition and corrective action report, and manage implementation of specialized cleaning, repairs and conservation. Will require new FTE to manage Red Line art assets.
49	7th Street / Metro Center K. Kobayashi, N. Korten & M. Perlas <i>Plantings</i> Pigmented concrete benches; cast aluminum, painted steel, gobos and electrical components	2002	Conduct detailed annual artwork inspection, documentation and cleaning. Annual cleaning and replacement of bulbs at the time of artwork rotation.	Ballast and polycarbonate require replacement.	Perform detailed annual artwork inspection and documentation, develop a condition and corrective action report, and manage implementation of specialized cleaning, repairs and conservation. Will require new FTE to manage Red Line art assets.
50	Civic Center / Grand Park Peter Requam <i>Civic Center Benches</i> Granite benches	2004	Conduct detailed annual artwork inspection and develop condition report. Document conditions and develop Maintenance Requirements. Specialized or minor repairs when needed.	Graffiti etchings at granite benches. Artwork is grimy, in need of cleaning.	Perform detailed annual artwork inspection and documentation, develop a condition and corrective action report, and manage implementation of specialized cleaning, repairs and conservation. Will require new FTE to manage Red Line art assets.
51	Civic Center / Grand Park Samm Kunce <i>In the Living Rock</i> Glass mosaic and granite murals	2004	Conduct detailed annual artwork inspection and develop condition report. Document conditions and develop Maintenance Requirements. Specialized or minor repairs when needed.	Graffiti etchings at granite artwork. Artwork is grimy, in need of cleaning.	Perform detailed annual artwork inspection and documentation, develop a condition and corrective action report, and manage implementation of specialized cleaning, repairs and conservation. Will require new FTE to manage Red Line art assets.
52	Vermont / Santa Monica George Legrady <i>Kinetic Flow</i> Porcelain enamel mural	2006	Conduct detailed annual artwork inspection and develop condition report. Document conditions and develop Maintenance Requirements. Specialized or minor repairs when needed.	Minor damage at artwork face. Artwork is grimy, in need of cleaning.	Perform detailed annual artwork inspection and documentation, develop a condition and corrective action report, and manage implementation of specialized cleaning, repairs and conservation. Will require new FTE to manage Red Line art assets.
53	Civic Center Station Faith Ringgold <i>People Portraits: in Creativity, Performing, Sports & Fashion</i> Glass mosaic panels	2010	Conduct detailed annual artwork inspection and develop condition report. Document conditions and develop Maintenance Requirements. Specialized or minor repairs when needed.	Artwork is grimy, in need of cleaning and sealant.	Perform detailed annual artwork inspection and documentation, develop a condition and corrective action report, and manage implementation of specialized cleaning, repairs and conservation. Will require new FTE to manage Red Line art assets.
54	Westlake / MacArthur Park Sonia Romero <i>MacArthur Park, Urban Oasis</i> Hand carved porcelain mosaic panels	2010	Conduct detailed annual artwork inspection and develop condition report. Document conditions and develop Maintenance Requirements. Specialized or minor repairs when needed.	Water intrusion at station at walls impacting Artwork mural. Artwork is grimy, in need of cleaning and sealant.	Perform detailed annual artwork inspection and documentation, develop a condition and corrective action report, and manage implementation of specialized cleaning, repairs and conservation. Will require new FTE to manage Red Line art assets.
55	Vermont / Beverly Tyree Guyton <i>People in Motion</i> Glass mosaic mural	2010	Conduct detailed annual artwork inspection and develop condition report. Document conditions and develop Maintenance Requirements. Specialized or minor repairs when needed.	Artwork is grimy, in need of cleaning and sealant.	Perform detailed annual artwork inspection and documentation, develop a condition and corrective action report, and manage implementation of specialized cleaning, repairs and conservation. Will require new FTE to manage Red Line art assets.
56	Universal City / Studio City Stephen Johnson <i>Untitled</i> Glass mosaic mural	2010	Conduct detailed annual artwork inspection and develop condition report. Document conditions and develop Maintenance Requirements. Specialized or minor repairs when needed.	Artwork is grimy, in need of cleaning and sealant.	Perform detailed annual artwork inspection and documentation, develop a condition and corrective action report, and manage implementation of specialized cleaning, repairs and conservation. Will require new FTE to manage Red Line art assets.

Metro Red/Purple Line					
Station	Artist / Artwork Title / Components	Year Installed	Annual Maintenance Requirements	Condition Status	FY19 Proposed Action Plan
57	Wilshire / Normandie Frank Romero <i>Festival of Masks Parade</i> Painted aluminum mural	1996	Conduct detailed annual artwork inspection and develop condition report. Document conditions and develop Maintenance Requirements. Specialized or minor repairs when needed.	Artwork is grimy, in need of cleaning and sealant.	Perform detailed annual artwork inspection and documentation, develop a condition and corrective action report, and manage implementation of specialized cleaning, repairs and conservation. Will require new FTE to manage Red Line art assets.
58	Wilshire / Western Richard Wyatt <i>People Coming People Going</i> Ceramic tile murals	1996	Conduct detailed annual artwork inspection and develop condition report. Document conditions and develop Maintenance Requirements. Specialized or minor repairs when needed.	Artwork is grimy, in need of cleaning and sealant.	Perform detailed annual artwork inspection and documentation, develop a condition and corrective action report, and manage implementation of specialized cleaning, repairs and conservation. Will require new FTE to manage Red Line art assets.
59	Wilshire / Normandie Rotating Artist <i>Rotating Photo Installations</i> Anodized aluminum, plexiglass, duratrans film	2001	Conduct detailed annual artwork inspection, documentation and cleaning. Annual cleaning and replacement of bulbs at the time of artwork rotation.	Ballast and polycarbonate require replacement.	Perform detailed annual artwork inspection and documentation, develop a condition and corrective action report, and manage implementation of specialized cleaning, repairs and conservation. Will require new FTE to manage Red Line art assets.
60	Wilshire / Western Pae White <i>The Beppins</i> Pigmented concrete stools; seeded lithocrete paving	2003	Conduct detailed annual artwork inspection and develop condition report. Document conditions and develop Maintenance Requirements. Specialized or minor repairs when needed.	Artwork is grimy, in need of cleaning and sealant.	Perform detailed annual artwork inspection and documentation, develop a condition and corrective action report, and manage implementation of specialized cleaning, repairs and conservation. Will require new FTE to manage Red Line art assets.
61	Wilshire / Vermont Bob Zoell <i>No Title</i> Ceramic tile murals	2004	Conduct detailed annual artwork inspection and develop condition report. Document conditions and develop Maintenance Requirements. Specialized or minor repairs when needed.	Broken tile and graffiti etchings at granite artwork. Artwork is grimy, in need of repair and cleaning.	Perform detailed annual artwork inspection and documentation, develop a condition and corrective action report, and manage implementation of specialized cleaning, repairs and conservation. Will require new FTE to manage Red Line art assets.

Metro Green Line					
Station	Artist / Artwork Title / Components	Year Installed	Annual Maintenance Requirements	Condition Status	FY21 Proposed Action Plan
62	Redondo Beach Carl Cheng <i>The Museum of Space Information</i> Painted steel satellite towers and satellite; painted steel TV Monitor cabinets and monitors; painted steel, glass and mixed media windscreens, concrete, glass, stone and stainless steel benches; concrete and resin planet formations; glass and mixed media illuminated diorama; glass, stone and steel inlays; porcelain enamel mural	1995	Inspections will result in the development of a Maintenance Plan identifying environmental and deferred maintenance impacts and Action Plan. Resources are needed to conduct detailed artwork inspection and condition report.	Structural elements appear in poor condition, damaged, artwork satellite feed not working. Currently with Metro Engineering for review. Will require resources to perform artwork inspections and condition report. In addition, possible professional conservator report identifying recommendations, as well as implementation of specialized cleaning, repairs and conservation.	Perform detailed annual artwork inspection and documentation, develop a condition and corrective action report, and manage implementation of specialized cleaning, repairs and conservation. Will require new FTE to manage Green Line art assets.
63	Douglas Renee Petropoulos <i>Untitled</i> Painted steel medallions; painted steel and galvanized steel tower, painted steel fencing; painted steel and concrete stools and benches; bronze inlays; bronze and painted steel telescopes; anodized aluminum panels; stamped text in concrete; porcelain enamels murals; terrazzo and bronze mural paving; ceramic tiles; glass with laminated imagery	1995	Inspections will result in the development of a Maintenance Plan identifying environmental and deferred maintenance impacts and Action Plan. Resources are needed to conduct detailed artwork inspection and condition report.	Sculpted artwork medallions appear damaged. Will require resources to perform artwork inspections and condition report. In addition, possible professional conservator report identifying recommendations, as well as implementation of specialized cleaning, repairs and conservation.	Perform detailed annual artwork inspection and documentation, develop a condition and corrective action report, and manage implementation of specialized cleaning, repairs and conservation. Will require new FTE to manage Green Line art assets.
64	El Segundo Daniel J. Martinez <i>For Your Intellectual Entertainment</i> Painted steel and galvanized steel structures, painted steel fencing; painted steel and concrete stools and benches; bronze inlays; bronze and painted steel telescopes; clocks; stamped text in concrete; porcelain enamels murals; terrazzo and bronze mural paving	1995	Inspections will result in the development of a Maintenance Plan identifying environmental and deferred maintenance impacts and Action Plan. Resources are needed to conduct detailed artwork inspection and condition report.	Artwork electronic element not working. Will require resources to perform artwork inspections and condition report. In addition, possible professional conservator report identifying recommendations, as well as implementation of specialized cleaning, repairs and conservation.	Perform detailed annual artwork inspection and documentation, develop a condition and corrective action report, and manage implementation of specialized cleaning, repairs and conservation. Will require new FTE to manage Green Line art assets.
65	Mariposa Charles Dickson <i>Divine Order: the Manifestation of the Soaring Spirit</i> Painted, pigmented concrete benches; ceramic tiles; glass and laminated imagery; terrazzo and bronze mural paving; ceramic tile cutouts; concrete relief mural; ceramic tile columns	1995	Inspections will result in the development of a Maintenance Plan identifying environmental and deferred maintenance impacts and Action Plan. Resources are needed to conduct detailed artwork inspection and condition report.	Broken glass windscreen removed from the platform in the Winter of 2016 .Will require resources to perform artwork inspections and condition report. In addition, possible professional conservator report identifying recommendations, as well as implementation of specialized cleaning, repairs and conservation.	Perform detailed annual artwork inspection and documentation, develop a condition and corrective action report, and manage implementation of specialized cleaning, repairs and conservation. Will require new FTE to manage Green Line art assets.
66	Aviation / LAX Richard Turner <i>Untitled</i> Glass and laminated imagery; terrazzo and bronze mural paving; pigmented concrete and steel chairs, tables and benches; painted steel panels	1995	Inspections will result in the development of a Maintenance Plan identifying environmental and deferred maintenance impacts and Action Plan. Resources are needed to conduct detailed artwork inspection and condition report.	Artwork sculptures require paint touch up, minor cracking at terrazzo artwork paving. Will require resources to perform artwork inspections and condition report. In addition, possible professional conservator report identifying recommendations, as well as implementation of specialized cleaning, repairs and conservation.	Perform detailed annual artwork inspection and documentation, develop a condition and corrective action report, and manage implementation of specialized cleaning, repairs and conservation. Will require new FTE to manage Green Line art assets.
67	Hawthorne / Lennox Mineko Grimmer <i>Companions</i> Patinated bronze sculptures; black granite benches	1995	Inspections will result in the development of a Maintenance Plan identifying environmental and deferred maintenance impacts and Action Plan. Resources are needed to conduct detailed artwork inspection and condition report.	Etchings at granite benches. Will require resources to perform artwork inspections and condition report. In addition, possible professional conservator report identifying recommendations, as well as implementation of specialized cleaning, repairs and conservation.	Perform detailed annual artwork inspection and documentation, develop a condition and corrective action report, and manage implementation of specialized cleaning, repairs and conservation. Will require new FTE to manage Green Line art assets.

Metro Green Line					
Station	Artist / Artwork Title / Components	Year Installed	Annual Maintenance Requirements	Condition Status	FY21 Proposed Action Plan
68	Crenshaw Buzz Spector <i>Crenshaw Stories</i> Ceramic tile murals; concrete benches; terra cotta tile paving; concrete impressions	1995	Inspections will result in the development of a Maintenance Plan identifying environmental and deferred maintenance impacts and Action Plan. Resources are needed to conduct detailed artwork inspection and condition report.	Minor damage at artwork paving. Will require resources to perform artwork inspections and condition report. In addition, possible professional conservator report identifying recommendations, as well as implementation of specialized cleaning, repairs and conservation.	Perform detailed annual artwork inspection and documentation, develop a condition and corrective action report, and manage implementation of specialized cleaning, repairs and conservation. Will require new FTE to manage Green Line art assets.
69	Vermont / Athens Kim Yasuda <i>Real Green</i> Ceramic tile murals; terrazzo and bronze mural paving; painted steel and wood benches; wood, painted aluminum and steel sculptural buckets	1995	Inspections will result in the development of a Maintenance Plan identifying environmental and deferred maintenance impacts and Action Plan. Resources are needed to conduct detailed artwork inspection and condition report.	Minor cracking at artwork terrazzo paving. Will require resources to perform artwork inspections and condition report. In addition, possible professional conservator report identifying recommendations, as well as implementation of specialized cleaning, repairs and conservation.	Perform detailed annual artwork inspection and documentation, develop a condition and corrective action report, and manage implementation of specialized cleaning, repairs and conservation. Will require new FTE to manage Green Line art assets.
70	Harbor Fwy Steve Appleton <i>Locus: City Imprints</i> Granite benches; pigmented concrete and steel benches; glass fiber reinforced concrete sculptures; pigmented concrete mural paving	1995	Inspections will result in the development of a Maintenance Plan identifying environmental and deferred maintenance impacts and Action Plan. Resources are needed to conduct detailed artwork inspection and condition report.	Artwork sculpture vandalized. Will require resources to perform artwork inspections and condition report. In addition, possible professional conservator report identifying recommendations, as well as implementation of specialized cleaning, repairs and conservation.	Perform detailed annual artwork inspection and documentation, develop a condition and corrective action report, and manage implementation of specialized cleaning, repairs and conservation. Will require new FTE to manage Green Line art assets.
71	Avalon Willie Middlebrook <i>Portrait of My People #619</i> Porcelain enamel murals	1995	Inspections will result in the development of a Maintenance Plan identifying environmental and deferred maintenance impacts and Action Plan. Resources are needed to conduct detailed artwork inspection and condition report.	Artwork sculpture vandalized. Will require resources to perform artwork inspections and condition report. In addition, possible professional conservator report identifying recommendations, as well as implementation of specialized cleaning, repairs and conservation.	Perform detailed annual artwork inspection and documentation, develop a condition and corrective action report, and manage implementation of specialized cleaning, repairs and conservation. Will require new FTE to manage Green Line art assets.
72	Avalon John Outterbridge <i>Pyramid</i> Concrete and ceramic tile sculptures; pigmented concrete mural paving	1995	Inspections will result in the development of a Maintenance Plan identifying environmental and deferred maintenance impacts and Action Plan. Resources are needed to conduct detailed artwork inspection and condition report.	Artwork sculpture vandalized. Will require resources to perform artwork inspections and condition report. In addition, possible professional conservator report identifying recommendations, as well as implementation of specialized cleaning, repairs and conservation.	Perform detailed annual artwork inspection and documentation, develop a condition and corrective action report, and manage implementation of specialized cleaning, repairs and conservation. Will require new FTE to manage Green Line art assets.
73	Avalon Stanley C. Wilson <i>Bridge of Culture</i> Pigmented and ceramic tile benches; ceramic tile mural paving, painted steel panels	1995	Inspections will result in the development of a Maintenance Plan identifying environmental and deferred maintenance impacts and Action Plan. Resources are needed to conduct detailed artwork inspection and condition report.	Artwork vandalized. Will require resources to perform artwork inspections and condition report. In addition, possible professional conservator report identifying recommendations, as well as implementation of specialized cleaning, repairs and conservation.	Perform detailed annual artwork inspection and documentation, develop a condition and corrective action report, and manage implementation of specialized cleaning, repairs and conservation. Will require new FTE to manage Green Line art assets.
74	Long Beach Blvd Sally Weber <i>Celestial Chance</i> Terra cotta tile mural paving; pigmented concrete and steel paving, painted steel sculptures; perforated steel and acrylic sculpture	1995	Inspections will result in the development of a Maintenance Plan identifying environmental and deferred maintenance impacts and Action Plan. Resources are needed to conduct detailed artwork inspection and condition report.	Minor damage at artwork paving. Painted elements have faded. Will require resources to perform artwork inspections and condition report. In addition, possible professional conservator report identifying recommendations, as well as implementation of specialized cleaning, repairs and conservation.	Perform detailed annual artwork inspection and documentation, develop a condition and corrective action report, and manage implementation of specialized cleaning, repairs and conservation. Will require new FTE to manage Green Line art assets.
75	Lakewood Blvd Erika Rothenberg <i>Wall of (Un)Fame</i> Pigmented concrete panels; pigmented concrete benches; pigmented concrete receptacles; painted steel grills; bronze plaque	1995	Inspections will result in the development of a Maintenance Plan identifying environmental and deferred maintenance impacts and Action Plan. Resources are needed to conduct detailed artwork inspection and condition report.	Artworks vandalized. Will require resources to perform artwork inspections and condition report. In addition, possible professional conservator report identifying recommendations, as well as implementation of specialized cleaning, repairs and conservation.	Perform detailed annual artwork inspection and documentation, develop a condition and corrective action report, and manage implementation of specialized cleaning, repairs and conservation. Will require new FTE to manage Green Line art assets.

Metro Green Line					
Station	Artist / Artwork Title / Components	Year Installed	Annual Maintenance Requirements	Condition Status	FY21 Proposed Action Plan
76	Norwalk Meg Cranston <i>Suka: Place of Bees</i> Ceramic tile; bronze tile; painted stainless steel sculptures; laminated imagery; painted steel and fiberglass sculptures	1995	Inspections will result in the development of a Maintenance Plan identifying environmental and deferred maintenance impacts and Action Plan. Resources are needed to conduct detailed artwork inspection and condition report.	Minor damage at artwork paving. Painted elements have faded. Will require resources to perform artwork inspections and condition report. In addition, possible professional conservator report identifying recommendations, as well as implementation of specialized cleaning, repairs and conservation.	Perform detailed annual artwork inspection and documentation, develop a condition and corrective action report, and manage implementation of specialized cleaning, repairs and conservation. Will require new FTE to manage Green Line art assets.

Metro Gold Line					
Station	Artist / Artwork Title / Components	Year Installed	Annual Maintenance Requirements	Condition Status	FY23 Proposed Action Plan
77	Chinatown Chusien Chang <i>The Wheels of Change</i> Painted aluminum benches; etched granite, glass and stainless steel compass; bronze bell; etched granite tile pavers	2003	Inspections will result in the development of a Maintenance Plan identifying environmental and deferred maintenance impacts and Action Plan. Resources are needed to conduct detailed artwork inspection and condition report.	Benches are etched (vandalized), require painting. Will require resources to perform artwork inspections and condition report. In addition, possible professional conservator report identifying recommendations, as well as implementation of specialized cleaning, repairs and conservation.	Perform detailed annual artwork inspection and documentation, develop a condition and corrective action report, and manage implementation of specialized cleaning, repairs and conservation. Will require new FTE to manage Gold Line art assets.
78	Lincoln / Cypress Cheri Gualke <i>Water Street: River of Dreams</i> Patinated copper, lexan and stainless steel panels; patinated bronze sculpture; stone boulders and seeded glass arroyo; concrete impressions	2003	Inspections will result in the development of a Maintenance Plan identifying environmental and deferred maintenance impacts and Action Plan. Resources are needed to conduct detailed artwork inspection and condition report.	Artwork is etched (vandalized), require patina and wax. Will require resources to perform artwork inspections and condition report. In addition, possible professional conservator report identifying recommendations, as well as implementation of specialized cleaning, repairs and conservation.	Perform detailed annual artwork inspection and documentation, develop a condition and corrective action report, and manage implementation of specialized cleaning, repairs and conservation. Will require new FTE to manage Gold Line art assets.
79	Heritage Square Roberto L. Delgado <i>El Quetzalcoatl de Xochicalco and La Gente del Pueblo</i> Ceramic tile paving; carved volcanic stone sculpture with rebar attachments	2003	Inspections will result in the development of a Maintenance Plan identifying environmental and deferred maintenance impacts and Action Plan. Resources are needed to conduct detailed artwork inspection and condition report.	Minor damage at artwork paving. Painted elements have faded. Will require resources to perform artwork inspections and condition report. In addition, possible professional conservator report identifying recommendations, as well as implementation of specialized cleaning, repairs and conservation.	Perform detailed annual artwork inspection and documentation, develop a condition and corrective action report, and manage implementation of specialized cleaning, repairs and conservation. Will require new FTE to manage Gold Line art assets.
80	Southwest Museum Teddy Sandoval <i>Highland Park Gateway</i> Glass fiber reinforced concrete and ceramic tile benches; glass fiber reinforced concrete, aluminum and glass mosaic sculptures; painted steel chairs; glass seeded arroyo paving	2003	Inspections will result in the development of a Maintenance Plan identifying environmental and deferred maintenance impacts and Action Plan. Resources are needed to conduct detailed artwork inspection and condition report.	Minor damage at artwork paving. Will require resources to perform artwork inspections and condition report. In addition, possible professional conservator report identifying recommendations, as well as implementation of specialized cleaning, repairs and conservation.	Perform detailed annual artwork inspection and documentation, develop a condition and corrective action report, and manage implementation of specialized cleaning, repairs and conservation. Will require new FTE to manage Gold Line art assets.
81	Highland Park Jud Fine <i>Stone Tree Inverted Post (Bound Water Light)</i> Pigmented illuminated acrylic domes; concrete benches; pigmented glass fiber reinforced concrete and bronze sculpture	2003	Inspections will result in the development of a Maintenance Plan identifying environmental and deferred maintenance impacts and Action Plan. Resources are needed to conduct detailed artwork inspection and condition report.	Artwork is etched (vandalized), require patina and wax. Will require resources to perform artwork inspections and condition report. In addition, possible professional conservator report identifying recommendations, as well as implementation of specialized cleaning, repairs and conservation.	Perform detailed annual artwork inspection and documentation, develop a condition and corrective action report, and manage implementation of specialized cleaning, repairs and conservation. Will require new FTE to manage Gold Line art assets.
82	South Pasadena Michael Stutz <i>Astride-Aside</i> Patinated bronze, painted steel sculpture; stone pedestals	2003	Inspections will result in the development of a Maintenance Plan identifying environmental and deferred maintenance impacts and Action Plan. Resources are needed to conduct detailed artwork inspection and condition report.	Artwork is etched (vandalized), require patina and wax. Will require resources to perform artwork inspections and condition report. In addition, possible professional conservator report identifying recommendations, as well as implementation of specialized cleaning, repairs and conservation.	Perform detailed annual artwork inspection and documentation, develop a condition and corrective action report, and manage implementation of specialized cleaning, repairs and conservation. Will require new FTE to manage Gold Line art assets.

Metro Gold Line					
Station	Artist / Artwork Title / Components	Year Installed	Annual Maintenance Requirements	Condition Status	FY23 Proposed Action Plan
83	Fillmore Michael C. McMillen <i>Geologica 42</i> Patinated bronze sculptures	2003	Inspections will result in the development of a Maintenance Plan identifying environmental and deferred maintenance impacts and Action Plan. Resources are needed to conduct detailed artwork inspection and condition report.	Artwork is etched (vandalized), require patina and wax. Will require resources to perform artwork inspections and condition report. In addition, possible professional conservator report identifying recommendations, as well as implementation of specialized cleaning, repairs and conservation.	Perform detailed annual artwork inspection and documentation, develop a condition and corrective action report, and manage implementation of specialized cleaning, repairs and conservation. Will require new FTE to manage Gold Line art assets.
84	Del Mar Ries Niemi <i>Kinetic Energy</i> Stainless steel fencing	2003	Inspections will result in the development of a Maintenance Plan identifying environmental and deferred maintenance impacts and Action Plan. Resources are needed to conduct detailed artwork inspection and condition report.	Minor damage at artwork fencing. Painted elements have faded. Will require resources to perform artwork inspections and condition report. In addition, possible professional conservator report identifying recommendations, as well as implementation of specialized cleaning, repairs and conservation.	Perform detailed annual artwork inspection and documentation, develop a condition and corrective action report, and manage implementation of specialized cleaning, repairs and conservation. Will require new FTE to manage Gold Line art assets.
85	Memorial Park John Valadez <i>The First Artist in Southern California: A Short Story</i> Painted steel sculpture	2003	Inspections will result in the development of a Maintenance Plan identifying environmental and deferred maintenance impacts and Action Plan. Resources are needed to conduct detailed artwork inspection and condition report.	Artwork is fading. Will require resources to perform artwork inspections and condition report. In addition, possible professional conservator report identifying recommendations, as well as implementation of specialized cleaning, repairs and conservation.	Perform detailed annual artwork inspection and documentation, develop a condition and corrective action report, and manage implementation of specialized cleaning, repairs and conservation. Will require new FTE to manage Gold Line art assets.
86	Lake Pat Ward Williams <i>Everyday People</i> Laminated imagery within glass panels	2003	Inspections will result in the development of a Maintenance Plan identifying environmental and deferred maintenance impacts and Action Plan. Resources are needed to conduct detailed artwork inspection and condition report.	Artwork panel damaged and removed. Will require resources to perform artwork inspections and condition report. In addition, possible professional conservator report identifying recommendations, as well as implementation of specialized cleaning, repairs and conservation.	Perform detailed annual artwork inspection and documentation, develop a condition and corrective action report, and manage implementation of specialized cleaning, repairs and conservation. Will require new FTE to manage Gold Line art assets.
87	Allen Michael Amescua <i>Rider's Dream</i> Stainless steel sculpture; glazed terra cotta paving; painted steel and stainless steel panels	2003	Inspections will result in the development of a Maintenance Plan identifying environmental and deferred maintenance impacts and Action Plan. Resources are needed to conduct detailed artwork inspection and condition report.	Artwork is fading. Will require resources to perform artwork inspections and condition report. In addition, possible professional conservator report identifying recommendations, as well as implementation of specialized cleaning, repairs and conservation.	Perform detailed annual artwork inspection and documentation, develop a condition and corrective action report, and manage implementation of specialized cleaning, repairs and conservation. Will require new FTE to manage Gold Line art assets.
88	Sierra Madre Villa Tony Gleaton <i>Untitled</i> Porcelain enamel panels	2003	Inspections will result in the development of a Maintenance Plan identifying environmental and deferred maintenance impacts and Action Plan. Resources are needed to conduct detailed artwork inspection and condition report.	Artwork is fading. Will require resources to perform artwork inspections and condition report. In addition, possible professional conservator report identifying recommendations, as well as implementation of specialized cleaning, repairs and conservation.	Perform detailed annual artwork inspection and documentation, develop a condition and corrective action report, and manage implementation of specialized cleaning, repairs and conservation. Will require new FTE to manage Gold Line art assets.
89	Sierra Madre Villa Beth Thielen <i>Images of Commonality / Nature and Movement</i> Concrete reliefs; glass mosaic and concrete mural paving; painted steel, acrylic and electrical light box	2003	Inspections will result in the development of a Maintenance Plan identifying environmental and deferred maintenance impacts and Action Plan. Resources are needed to conduct detailed artwork inspection and condition report.	Artwork is etched (vandalized), require paint and renovation. Will require resources to perform artwork inspections and condition report. In addition, possible professional conservator report identifying recommendations, as well as implementation of specialized cleaning, repairs and conservation.	Perform detailed annual artwork inspection and documentation, develop a condition and corrective action report, and manage implementation of specialized cleaning, repairs and conservation. Will require new FTE to manage Gold Line art assets.
90	Union Station Roy Nicholson <i>Solar Shift: San Bernardino and Santa Monica</i> Glass mosaic murals, painted walls	2006	Inspections will result in the development of a Maintenance Plan identifying environmental and deferred maintenance impacts and Action Plan. Resources are needed to conduct detailed artwork inspection and condition report.	Will require resources to perform artwork inspections and condition report. In addition, possible professional conservator report identifying recommendations, as well as implementation of specialized cleaning, repairs and conservation.	Perform detailed annual artwork inspection and documentation, develop a condition and corrective action report, and manage implementation of specialized cleaning, repairs and conservation. Will require new FTE to manage Gold Line art assets.

Metro Gold Line					
Station	Artist / Artwork Title / Components	Year Installed	Annual Maintenance Requirements	Condition Status	FY23 Proposed Action Plan
91	Little Tokyo / Arts District Hirokazu Kosaka <i>Buffer Zone</i> Granite benches	2009	Inspections will result in the development of a Maintenance Plan identifying environmental and deferred maintenance impacts and Action Plan. Resources are needed to conduct detailed artwork inspection and condition report.	Etching at artwork granite (vandalism). Will require resources to perform artwork inspections and condition report. In addition, possible professional conservator report identifying recommendations, as well as implementation of specialized cleaning, repairs and conservation.	Perform detailed annual artwork inspection and documentation, develop a condition and corrective action report, and manage implementation of specialized cleaning, repairs and conservation. Will require new FTE to manage Gold Line art assets.
92	Pico / Aliso Rob Nielson <i>About Place About Face</i> Cast iron sculptures	2009	Inspections will result in the development of a Maintenance Plan identifying environmental and deferred maintenance impacts and Action Plan. Resources are needed to conduct detailed artwork inspection and condition report.	Artwork is rusting. Will require resources to perform artwork inspections and condition report. In addition, possible professional conservator report identifying recommendations, as well as implementation of specialized cleaning, repairs and conservation.	Perform detailed annual artwork inspection and documentation, develop a condition and corrective action report, and manage implementation of specialized cleaning, repairs and conservation. Will require new FTE to manage Gold Line art assets.
93	Mariachi Plaza Alejandro de la Loza <i>El Nino Perdido</i> Cast bronze sculptures; granite panels	2009	Inspections will result in the development of a Maintenance Plan identifying environmental and deferred maintenance impacts and Action Plan. Resources are needed to conduct detailed artwork inspection and condition report.	Artwork is etched (vandalized), requires minor repairs and waxing. Will require resources to perform artwork inspections and condition report. In addition, possible professional conservator report identifying recommendations, as well as implementation of specialized cleaning, repairs and conservation.	Perform detailed annual artwork inspection and documentation, develop a condition and corrective action report, and manage implementation of specialized cleaning, repairs and conservation. Will require new FTE to manage Gold Line art assets.
94	Soto Nobuho Nagasawa <i>Landings</i> Aluminum panels of imagery and text; Glass curtain wall; Stainless steel, acrylic and LED sculpture	2009	Inspections will result in the development of a Maintenance Plan identifying environmental and deferred maintenance impacts and Action Plan. Resources are needed to conduct detailed artwork inspection and condition report.	Artwork is grimy and lighting is out. In need of cleaning and sealant. Will require resources to perform artwork inspections and condition report. In addition, possible professional conservator report identifying recommendations, as well as implementation of specialized cleaning, repairs and conservation.	Perform detailed annual artwork inspection and documentation, develop a condition and corrective action report, and manage implementation of specialized cleaning, repairs and conservation. Will require new FTE to manage Gold Line art assets.
95	Indiana Paul Botello <i>Syncretic Manifestations</i> Stainless steel panels	2009	Inspections will result in the development of a Maintenance Plan identifying environmental and deferred maintenance impacts and Action Plan. Resources are needed to conduct detailed artwork inspection and condition report.	Will require resources to perform artwork inspections and condition report. In addition, possible professional conservator report identifying recommendations, as well as implementation of specialized cleaning, repairs and conservation.	Perform detailed annual artwork inspection and documentation, develop a condition and corrective action report, and manage implementation of specialized cleaning, repairs and conservation. Will require new FTE to manage Gold Line art assets.
96	Maravilla Jose Lopez <i>Maravilla Hearts of Tokens</i> Stainless steel sculptures; aluminum panels	2009	Inspections will result in the development of a Maintenance Plan identifying environmental and deferred maintenance impacts and Action Plan. Resources are needed to conduct detailed artwork inspection and condition report.	Will require resources to perform artwork inspections and condition report. In addition, possible professional conservator report identifying recommendations, as well as implementation of specialized cleaning, repairs and conservation.	Perform detailed annual artwork inspection and documentation, develop a condition and corrective action report, and manage implementation of specialized cleaning, repairs and conservation. Will require new FTE to manage Gold Line art assets.
97	East LA Civic Center Clement Hanami <i>Through the Looking Glass or Traveling at the Speed of Light (Rail)</i> Painted steel sculpture; pigmented concrete paving	2009	Inspections will result in the development of a Maintenance Plan identifying environmental and deferred maintenance impacts and Action Plan. Resources are needed to conduct detailed artwork inspection and condition report.	Will require resources to perform artwork inspections and condition report. In addition, possible professional conservator report identifying recommendations, as well as implementation of specialized cleaning, repairs and conservation.	Perform detailed annual artwork inspection and documentation, develop a condition and corrective action report, and manage implementation of specialized cleaning, repairs and conservation. Will require new FTE to manage Gold Line art assets.
98	Atlantic Adobe LA <i>Blissful Interiors</i> Painted steel sculpture; GFRC pigmented benches; ceramic tile paving	2009	Inspections will result in the development of a Maintenance Plan identifying environmental and deferred maintenance impacts and Action Plan. Resources are needed to conduct detailed artwork inspection and condition report.	Will require resources to perform artwork inspections and condition report. In addition, possible professional conservator report identifying recommendations, as well as implementation of specialized cleaning, repairs and conservation.	Perform detailed annual artwork inspection and documentation, develop a condition and corrective action report, and manage implementation of specialized cleaning, repairs and conservation. Will require new FTE to manage Gold Line art assets.

Metro Gold Line					
Station	Artist / Artwork Title / Components	Year Installed	Annual Maintenance Requirements	Condition Status	FY23 Proposed Action Plan
99	Arcadia Michael Davis <i>Arcadian Zephyr</i> Perforated stainless steel panels, painted steel and kinetic bronze weathervane, etched granite bench backs, glass canopy. Lithocrete paving at adjacent parking garage.	2016	Inspections will result in the development of a Maintenance Plan identifying environmental and deferred maintenance impacts and Action Plan. Resources are needed to conduct detailed artwork inspection and condition report.	Will require resources to perform artwork inspections and condition report. In addition, possible professional conservator report identifying recommendations, as well as implementation of specialized cleaning, repairs and conservation.	Perform detailed annual artwork inspection and documentation, develop a condition and corrective action report, and manage implementation of specialized cleaning, repairs and conservation. Will require new FTE to manage Gold Line art assets.
100	Monrovia Cha-Rie Tang <i>River of Time</i> Hard carved ceramic tiles at platform paving and columns. Hand carved ceramic tiles at adjacent parking garage.	2016	Inspections will result in the development of a Maintenance Plan identifying environmental and deferred maintenance impacts and Action Plan. Resources are needed to conduct detailed artwork inspection and condition report.	Will require resources to perform artwork inspections and condition report. In addition, possible professional conservator report identifying recommendations, as well as implementation of specialized cleaning, repairs and conservation.	Perform detailed annual artwork inspection and documentation, develop a condition and corrective action report, and manage implementation of specialized cleaning, repairs and conservation. Will require new FTE to manage Gold Line art assets.
101	Duarte / City of Hope Andrea Myklebust and Stanton Gray Sears <i>Spirit of the San Gabriel River</i> Sculptural painted steel and stone columns, bronze pavers at platform.	2016	Inspections will result in the development of a Maintenance Plan identifying environmental and deferred maintenance impacts and Action Plan. Resources are needed to conduct detailed artwork inspection and condition report.	Will require resources to perform artwork inspections and condition report. In addition, possible professional conservator report identifying recommendations, as well as implementation of specialized cleaning, repairs and conservation.	Perform detailed annual artwork inspection and documentation, develop a condition and corrective action report, and manage implementation of specialized cleaning, repairs and conservation. Will require new FTE to manage Gold Line art assets.
102	Inwindale Robin Brailsford <i>Pioneros De La Rivera De San Gabriel</i> Painted steel panels and lithocrete pavers at platform. Lithocrete pavers at adjacent parking garage.	2016	Inspections will result in the development of a Maintenance Plan identifying environmental and deferred maintenance impacts and Action Plan. Resources are needed to conduct detailed artwork inspection and condition report.	Will require resources to perform artwork inspections and condition report. In addition, possible professional conservator report identifying recommendations, as well as implementation of specialized cleaning, repairs and conservation.	Perform detailed annual artwork inspection and documentation, develop a condition and corrective action report, and manage implementation of specialized cleaning, repairs and conservation. Will require new FTE to manage Gold Line art assets.
103	Azusa Downtown Jose Antonio Aguirre <i>A Passage Through Memory</i> Glass fiber reinforced concrete entrance portals with painted steel and glass mosaic. Glass mosaic at columns.	2016	Inspections will result in the development of a Maintenance Plan identifying environmental and deferred maintenance impacts and Action Plan. Resources are needed to conduct detailed artwork inspection and condition report.	Will require resources to perform artwork inspections and condition report. In addition, possible professional conservator report identifying recommendations, as well as implementation of specialized cleaning, repairs and conservation.	Perform detailed annual artwork inspection and documentation, develop a condition and corrective action report, and manage implementation of specialized cleaning, repairs and conservation. Will require new FTE to manage Gold Line art assets.
104	APU/Citrus College Lynn Goodpasture <i>Azusa Horticultural Paradise</i> Mosaic glass murals at benches, glass canopy. Etched concrete at adjacent parking garage.	2016	Inspections will result in the development of a Maintenance Plan identifying environmental and deferred maintenance impacts and Action Plan. Resources are needed to conduct detailed artwork inspection and condition report.	Will require resources to perform artwork inspections and condition report. In addition, possible professional conservator report identifying recommendations, as well as implementation of specialized cleaning, repairs and conservation.	Perform detailed annual artwork inspection and documentation, develop a condition and corrective action report, and manage implementation of specialized cleaning, repairs and conservation. Will require new FTE to manage Gold Line art assets.

Metro Orange Line					
Station	Artist / Artwork Title / Components	Year Installed	Annual Maintenance Requirements	Condition Status	Action Plan
105	Alignment Jud Fine <i>Seven Spots and a Path</i> Alignments landscaping	2005	Inspections will result in the development of a Maintenance Plan identifying environmental and deferred maintenance impacts and Action Plan. Resources are needed to conduct detailed artwork inspection and condition report.	Will require resources to perform artwork inspections and condition report. In addition, possible professional conservator report identifying recommendations, as well as implementation of specialized cleaning, repairs and conservation.	Will request dedicated staff and resources in future years.
106	North Hollywood Caryl Davis <i>Dramatic Local</i> Porcelain enamel steel panel; terrazzo mural paving	2005	Inspections will result in the development of a Maintenance Plan identifying environmental and deferred maintenance impacts and Action Plan. Resources are needed to conduct detailed artwork inspection and condition report.	Abatement film at artwork panel requires replacement, minor cracking at terrazzo artwork paving. Will require resources to perform artwork inspections and condition report. In addition, possible professional conservator report identifying recommendations, as well as implementation of specialized cleaning, repairs and conservation.	Will request dedicated staff and resources in future years.

Metro Orange Line					
Station	Artist / Artwork Title / Components	Year Installed	Annual Maintenance Requirements	Condition Status	Action Plan
107	Laurel Canyon Phung Huynh <i>Lucky California</i> Porcelain enamel steel panels; terrazzo mural paving	2005	Inspections will result in the development of a Maintenance Plan identifying environmental and deferred maintenance impacts and Action Plan. Resources are needed to conduct detailed artwork inspection and condition report.	Minor etching at artwork panels (vandalism), minor cracking at terrazzo artwork paving. Will require resources to perform artwork inspections and condition report. In addition, possible professional conservator report identifying recommendations, as well as implementation of specialized cleaning, repairs and conservation.	Will request dedicated staff and resources in future years.
108	Valley College Laura London <i>Former Location/Contemporary Portrait</i> Porcelain enamel steel panels; terrazzo mural paving	2005	Inspections will result in the development of a Maintenance Plan identifying environmental and deferred maintenance impacts and Action Plan. Resources are needed to conduct detailed artwork inspection and condition report.	Minor etching at artwork panels (vandalism), minor cracking at terrazzo artwork paving. Will require resources to perform artwork inspections and condition report. In addition, possible professional conservator report identifying recommendations, as well as implementation of specialized cleaning, repairs and conservation.	Will request dedicated staff and resources in future years.
109	Valley College, Van Nuys, Sepulveda, Balboa, Reseda Renee Petropoulos <i>14 Miles</i> Terrazzo benches	2005	Inspections will result in the development of a Maintenance Plan identifying environmental and deferred maintenance impacts and Action Plan. Resources are needed to conduct detailed artwork inspection and condition report.	Minor cracking / chipping at terrazzo artwork. Will require resources to perform artwork inspections and condition report. In addition, possible professional conservator report identifying recommendations, as well as implementation of specialized cleaning, repairs and conservation.	Will request dedicated staff and resources in future years.
110	Woodman Daniel Marlos <i>Journey to California</i> Porcelain enamel steel panels; terrazzo mural paving	2005	Inspections will result in the development of a Maintenance Plan identifying environmental and deferred maintenance impacts and Action Plan. Resources are needed to conduct detailed artwork inspection and condition report.	Minor etching at artwork panels (vandalism), minor cracking at terrazzo artwork paving. Will require resources to perform artwork inspections and condition report. In addition, possible professional conservator report identifying recommendations, as well as implementation of specialized cleaning, repairs and conservation.	Will request dedicated staff and resources in future years.
111	Van Nuys Roxene Rockwell <i>VAN NUYS, The New Town</i> Porcelain enamel steel panels; terrazzo mural paving	2005	Inspections will result in the development of a Maintenance Plan identifying environmental and deferred maintenance impacts and Action Plan. Resources are needed to conduct detailed artwork inspection and condition report.	Minor etching at artwork panels (vandalism), minor cracking at terrazzo artwork paving. Will require resources to perform artwork inspections and condition report. In addition, possible professional conservator report identifying recommendations, as well as implementation of specialized cleaning, repairs and conservation.	Will request dedicated staff and resources in future years.
112	Sepulveda Michele Martinez <i>Todos Vuelven</i> Porcelain enamel steel panels; terrazzo mural paving	2005	Inspections will result in the development of a Maintenance Plan identifying environmental and deferred maintenance impacts and Action Plan. Resources are needed to conduct detailed artwork inspection and condition report.	Minor etching at artwork panels (vandalism), minor cracking at terrazzo artwork paving. Will require resources to perform artwork inspections and condition report. In addition, possible professional conservator report identifying recommendations, as well as implementation of specialized cleaning, repairs and conservation.	Will request dedicated staff and resources in future years.
113	Woodley John Roloff <i>Valley Scan</i> Porcelain enamel steel panels; terrazzo mural paving	2005	Inspections will result in the development of a Maintenance Plan identifying environmental and deferred maintenance impacts and Action Plan. Resources are needed to conduct detailed artwork inspection and condition report.	Minor etching at artwork panels (vandalism), minor cracking at terrazzo artwork paving. Will require resources to perform artwork inspections and condition report. In addition, possible professional conservator report identifying recommendations, as well as implementation of specialized cleaning, repairs and conservation.	Will request dedicated staff and resources in future years.

Metro Orange Line						
Station	Artist / Artwork Title / Components	Year Installed	Annual Maintenance Requirements	Condition Status	Action Plan	
114	Balboa	John O'Brien <i>OverSite</i> Porcelain enamel steel panels; terrazzo mural paving	2005	Inspections will result in the development of a Maintenance Plan identifying environmental and deferred maintenance impacts and Action Plan. Resources are needed to conduct detailed artwork inspection and condition report.	Minor etching at artwork panels (vandalism), minor cracking at terrazzo artwork paving. Will require resources to perform artwork inspections and condition report. In addition, possible professional conservator report identifying recommendations, as well as implementation of specialized cleaning, repairs and conservation.	Will request dedicated staff and resources in future years.
115	Reseda	Jody Zellen <i>Now and Then</i> Porcelain enamel steel panels; terrazzo mural paving	2005	Inspections will result in the development of a Maintenance Plan identifying environmental and deferred maintenance impacts and Action Plan. Resources are needed to conduct detailed artwork inspection and condition report.	Minor etching at artwork panels (vandalism), minor cracking at terrazzo artwork paving. Will require resources to perform artwork inspections and condition report. In addition, possible professional conservator report identifying recommendations, as well as implementation of specialized cleaning, repairs and conservation.	Will request dedicated staff and resources in future years.
116	Tampa	Sandow Birk <i>Tarzan and Tarzana</i> Porcelain enamel steel panels; terrazzo mural paving	2005	Inspections will result in the development of a Maintenance Plan identifying environmental and deferred maintenance impacts and Action Plan. Resources are needed to conduct detailed artwork inspection and condition report.	Minor etching at artwork panels (vandalism), minor cracking at terrazzo artwork paving. Will require resources to perform artwork inspections and condition report. In addition, possible professional conservator report identifying recommendations, as well as implementation of specialized cleaning, repairs and conservation.	Will request dedicated staff and resources in future years.
117	Pierce College	Pat Warner <i>What We See</i> Porcelain enamel steel panels; terrazzo mural paving	2005	Inspections will result in the development of a Maintenance Plan identifying environmental and deferred maintenance impacts and Action Plan. Resources are needed to conduct detailed artwork inspection and condition report.	Minor etching at artwork panels (vandalism), minor cracking at terrazzo artwork paving. Will require resources to perform artwork inspections and condition report. In addition, possible professional conservator report identifying recommendations, as well as implementation of specialized cleaning, repairs and conservation.	Will request dedicated staff and resources in future years.
118	De Soto	John Divola <i>Images From Dogs Chasing My Car in the Desert</i> Porcelain enamel steel panels; terrazzo mural paving	2005	Inspections will result in the development of a Maintenance Plan identifying environmental and deferred maintenance impacts and Action Plan. Resources are needed to conduct detailed artwork inspection and condition report.	Minor etching at artwork panels (vandalism), minor cracking at terrazzo artwork paving. Will require resources to perform artwork inspections and condition report. In addition, possible professional conservator report identifying recommendations, as well as implementation of specialized cleaning, repairs and conservation.	Will request dedicated staff and resources in future years.
119	Canoga	Roy Dowell <i>Constructed Histories</i> Porcelain enamel steel panels; terrazzo mural paving	2005	Inspections will result in the development of a Maintenance Plan identifying environmental and deferred maintenance impacts and Action Plan. Resources are needed to conduct detailed artwork inspection and condition report.	Minor etching at artwork panels (vandalism). Artwork inspection and condition report required. Will require resources to perform artwork inspections and condition report. In addition, possible professional conservator report identifying recommendations, as well as implementation of specialized cleaning, repairs and conservation.	Will request dedicated staff and resources in future years.
120	Canoga	Ken Gonzales-Day <i>Western Imaginary</i> Porcelain enamel steel panels; stone and glass mosaic mural paving	2012	Inspections will result in the development of a Maintenance Plan identifying environmental and deferred maintenance impacts and Action Plan. Resources are needed to conduct detailed artwork inspection and condition report.	Minor etching at artwork panels (vandalism). Artwork inspection and condition report required. Will require resources to perform artwork inspections and condition report. In addition, possible professional conservator report identifying recommendations, as well as implementation of specialized cleaning, repairs and conservation.	Will request dedicated staff and resources in future years.

Metro Orange Line					
Station	Artist / Artwork Title / Components	Year Installed	Annual Maintenance Requirements	Condition Status	Action Plan
121 Sherman Way	Margaret Lazzari <i>Ovensmouth / Canoga Park</i> Porcelain enamel steel panels; stone and glass mosaic mural paving	2012	Inspections will result in the development of a Maintenance Plan identifying environmental and deferred maintenance impacts and Action Plan. Resources are needed to conduct detailed artwork inspection and condition report.	Minor etching at artwork panels (vandalism). Artwork inspection and condition report required. Will require resources to perform artwork inspections and condition report. In addition, possible professional conservator report identifying recommendations, as well as implementation of specialized cleaning, repairs and conservation.	Will request dedicated staff and resources in future years.
122 Roscoe	Sam Erenberg <i>Liquid Light: Flowing Into The Future</i> Porcelain enamel steel panels; stone and glass mosaic mural paving	2012	Inspections will result in the development of a Maintenance Plan identifying environmental and deferred maintenance impacts and Action Plan. Resources are needed to conduct detailed artwork inspection and condition report.	Minor etching at artwork panels (vandalism). Artwork inspection and condition report required. Will require resources to perform artwork inspections and condition report. In addition, possible professional conservator report identifying recommendations, as well as implementation of specialized cleaning, repairs and conservation.	Will request dedicated staff and resources in future years.
123 Nordhoff	Anne Marie Karlsen <i>Strati</i> Porcelain enamel steel panels; stone and glass mosaic mural paving	2012	Inspections will result in the development of a Maintenance Plan identifying environmental and deferred maintenance impacts and Action Plan. Resources are needed to conduct detailed artwork inspection and condition report.	Minor etching at artwork panels (vandalism). Artwork inspection and condition report required. Will require resources to perform artwork inspections and condition report. In addition, possible professional conservator report identifying recommendations, as well as implementation of specialized cleaning, repairs and conservation.	Will request dedicated staff and resources in future years.
124 Chatsworth	Lisa Adams <i>A Glimpse of Stoney Point</i> Porcelain enamel steel panels; stone and glass mosaic mural paving	2012	Inspections will result in the development of a Maintenance Plan identifying environmental and deferred maintenance impacts and Action Plan. Resources are needed to conduct detailed artwork inspection and condition report.	Minor etching at artwork panels (vandalism). Artwork inspection and condition report required. Will require resources to perform artwork inspections and condition report. In addition, possible professional conservator report identifying recommendations, as well as implementation of specialized cleaning, repairs and conservation.	Will request dedicated staff and resources in future years.

Metro Expo Line					
Station	Artist / Artwork Title / Components	Year Installed	Annual Maintenance Requirements	Condition Status	Action Plan
125 LATTC / Ortho Institute	Christofer C. Dierdorff <i>The Intimacy of Place</i> Porcelain enamel steel panels	2012	Inspections will result in the development of a Maintenance Plan identifying environmental and deferred maintenance impacts and Action Plan. Resources are needed to conduct detailed artwork inspection and condition report.	Failed paint system on Expo 1 station structures may compromise artwork. Will require resources to perform artwork inspections and condition report. In addition, possible professional conservator report identifying recommendations, as well as implementation of specialized cleaning, repairs and conservation.	Will request dedicated staff and resources in future years.
126 Jefferson / USC	Samuel Rodriguez <i>Urban Dualities</i> Hand-glazed, hand-cut ceramic mosaic pane	2012	Inspections will result in the development of a Maintenance Plan identifying environmental and deferred maintenance impacts and Action Plan. Resources are needed to conduct detailed artwork inspection and condition report.	Failed paint system on Expo 1 station structures may compromise artwork. Will require resources to perform artwork inspections and condition report. In addition, possible professional conservator report identifying recommendations, as well as implementation of specialized cleaning, repairs and conservation.	Will request dedicated staff and resources in future years.

Metro Expo Line					
Station	Artist / Artwork Title / Components	Year Installed	Annual Maintenance Requirements	Condition Status	Action Plan
127	Expo Park / USC Robbert Flick <i>On Saturdays</i> Photographic porcelain tile panels	2012	Inspections will result in the development of a Maintenance Plan identifying environmental and deferred maintenance impacts and Action Plan. Resources are needed to conduct detailed artwork inspection and condition report.	Failed paint system on Expo 1 station structures may compromise artwork. Will require resources to perform artwork inspections and condition report. In addition, possible professional conservator report identifying recommendations, as well as implementation of specialized cleaning, repairs and conservation.	Will request dedicated staff and resources in future years.
128	Expo / Vermont Jessica Polzin McCoy <i>Neighborhood Portrait: Reconstructed</i> Hand-glazed, hand-cut ceramic mosaic panels	2012	Inspections will result in the development of a Maintenance Plan identifying environmental and deferred maintenance impacts and Action Plan. Resources are needed to conduct detailed artwork inspection and condition report.	Failed paint system on Expo 1 station structures may compromise artwork. Will require resources to perform artwork inspections and condition report. In addition, possible professional conservator report identifying recommendations, as well as implementation of specialized cleaning, repairs and conservation.	Will request dedicated staff and resources in future years.
129	Expo / Western Ronald J. Llanos <i>Ephemeral Views: A Visual Essay</i> Hand-glazed, hand-cut ceramic mosaic panels	2012	Inspections will result in the development of a Maintenance Plan identifying environmental and deferred maintenance impacts and Action Plan. Resources are needed to conduct detailed artwork inspection and condition report.	Failed paint system on Expo 1 station structures may compromise artwork. Will require resources to perform artwork inspections and condition report. In addition, possible professional conservator report identifying recommendations, as well as implementation of specialized cleaning, repairs and conservation.	Will request dedicated staff and resources in future years.
130	Expo / Crenshaw Willie Robert Middlebrook Jr. <i>Wanderers</i> Glass mosaic panels	2012	Inspections will result in the development of a Maintenance Plan identifying environmental and deferred maintenance impacts and Action Plan. Resources are needed to conduct detailed artwork inspection and condition report.	Failed paint system on Expo 1 station structures may compromise artwork. Will require resources to perform artwork inspections and condition report. In addition, possible professional conservator report identifying recommendations, as well as implementation of specialized cleaning, repairs and conservation.	Will request dedicated staff and resources in future years.
131	Farmdale Michael Massenburg <i>All in a Day</i> Glass mosaic panels	2012	Inspections will result in the development of a Maintenance Plan identifying environmental and deferred maintenance impacts and Action Plan. Resources are needed to conduct detailed artwork inspection and condition report.	Will require resources to perform artwork inspections and condition report. In addition, possible professional conservator report identifying recommendations, as well as implementation of specialized cleaning, repairs and conservation.	Will request dedicated staff and resources in future years.
132	Expo / La Brea Jose Lozano <i>LA Metro Loteria</i> Commercial tile, ink sublimation panels	2012	Inspections will result in the development of a Maintenance Plan identifying environmental and deferred maintenance impacts and Action Plan. Resources are needed to conduct detailed artwork inspection and condition report.	Failed paint system on Expo 1 station structures may compromise artwork. Will require resources to perform artwork inspections and condition report. In addition, possible professional conservator report identifying recommendations, as well as implementation of specialized cleaning, repairs and conservation.	Will request dedicated staff and resources in future years.
133	La Cienega / Jefferson Daniel Gonzales <i>Engraved in Memory</i> Hand-glazed, hand-cut ceramic porcelain mosaic panels	2012	Inspections will result in the development of a Maintenance Plan identifying environmental and deferred maintenance impacts and Action Plan. Resources are needed to conduct detailed artwork inspection and condition report.	Failed paint system on Expo 1 station structures may compromise artwork. Will require resources to perform artwork inspections and condition report. In addition, possible professional conservator report identifying recommendations, as well as implementation of specialized cleaning, repairs and conservation.	Will request dedicated staff and resources in future years.

Metro Expo Line					
Station	Artist / Artwork Title / Components	Year Installed	Annual Maintenance Requirements	Condition Status	Action Plan
134	Culver City Tom LaDuke <i>Unknowable Origins</i> Glass mosaic panels	2012	Inspections will result in the development of a Maintenance Plan identifying environmental and deferred maintenance impacts and Action Plan. Resources are needed to conduct detailed artwork inspection and condition report.	Failed paint system on Expo 1 station structures may compromise artwork. Will require resources to perform artwork inspections and condition report. In addition, possible professional conservator report identifying recommendations, as well as implementation of specialized cleaning, repairs and conservation.	Will request dedicated staff and resources in future years.
135	Palms Shizu Saldamando <i>Artist Educators</i> Glass mosaic and hand-cut ceramic mosaic panels	2016	Inspections will result in the development of a Maintenance Plan identifying environmental and deferred maintenance impacts and Action Plan. Resources are needed to conduct detailed artwork inspection and condition report.	Failed paint system on Expo 1 station structures may compromise artwork. Will require resources to perform artwork inspections and condition report. In addition, possible professional conservator report identifying recommendations, as well as implementation of specialized cleaning, repairs and conservation.	Will request dedicated staff and resources in future years.
136	Westwood / Rancho park Abel Alejandro <i>Panoramas</i> Photographic porcelain tile panels	2016	Inspections will result in the development of a Maintenance Plan identifying environmental and deferred maintenance impacts and Action Plan. Resources are needed to conduct detailed artwork inspection and condition report.	Will require resources to perform artwork inspections and condition report. In addition, possible professional conservator report identifying recommendations, as well as implementation of specialized cleaning, repairs and conservation.	Will request dedicated staff and resources in future years.
137	Expo / Sepulveda Susan Logoreci <i>Right Above the Right-of-Way</i> Hand-glazed, hand-cut ceramic mosaic panels	2016	Inspections will result in the development of a Maintenance Plan identifying environmental and deferred maintenance impacts and Action Plan. Resources are needed to conduct detailed artwork inspection and condition report.	Will require resources to perform artwork inspections and condition report. In addition, possible professional conservator report identifying recommendations, as well as implementation of specialized cleaning, repairs and conservation.	Will request dedicated staff and resources in future years.
138	Expo / Bundy Nzuji de Magalhães <i>And Here I Will Stay</i> Glass mosaic and hand-cut ceramic mosaic panels	2016	Inspections will result in the development of a Maintenance Plan identifying environmental and deferred maintenance impacts and Action Plan. Resources are needed to conduct detailed artwork inspection and condition report.	Will require resources to perform artwork inspections and condition report. In addition, possible professional conservator report identifying recommendations, as well as implementation of specialized cleaning, repairs and conservation.	Will request dedicated staff and resources in future years.
139	26th St / Bergamot Constance Mallinson <i>Local Color</i> Photographic porcelain tile panels	2016	Inspections will result in the development of a Maintenance Plan identifying environmental and deferred maintenance impacts and Action Plan. Resources are needed to conduct detailed artwork inspection and condition report.	Will require resources to perform artwork inspections and condition report. In addition, possible professional conservator report identifying recommendations, as well as implementation of specialized cleaning, repairs and conservation.	Will request dedicated staff and resources in future years.
140	17th St / SMC Carmen Argote <i>What you wore, What you wear</i> Photographic porcelain tile panels	2016	Inspections will result in the development of a Maintenance Plan identifying environmental and deferred maintenance impacts and Action Plan. Resources are needed to conduct detailed artwork inspection and condition report.	Will require resources to perform artwork inspections and condition report. In addition, possible professional conservator report identifying recommendations, as well as implementation of specialized cleaning, repairs and conservation.	Will request dedicated staff and resources in future years.
141	Downtown Santa Monica Judithe Hernández <i>L.A. Sonata</i> Glass mosaic panels	2016	Inspections will result in the development of a Maintenance Plan identifying environmental and deferred maintenance impacts and Action Plan. Resources are needed to conduct detailed artwork inspection and condition report.	Will require resources to perform artwork inspections and condition report. In addition, possible professional conservator report identifying recommendations, as well as implementation of specialized cleaning, repairs and conservation.	Will request dedicated staff and resources in future years.

Metro Silver Line					
Station	Artist / Artwork Title / Components	Year Installed	Annual Maintenance Requirements	Condition Status	Action Plan
142	Cal State LA Merge Conceptual Design <i>Overcoat - CSULA</i> Painted steel; painted concrete; Ceramic tile	2009	Inspections will result in the development of a Maintenance Plan identifying environmental and deferred maintenance impacts and Action Plan. Resources are needed to conduct detailed artwork inspection and condition report.	Will require resources to perform artwork inspections and condition report. In addition, possible professional conservator report identifying recommendations, as well as implementation of specialized cleaning, repairs and conservation.	Will request dedicated staff and resources in future years.
143	LAC + USC Medical Center Merge Conceptual Design <i>Untitled</i> Painted steel; painted concrete; Ceramic tile	2009	Inspections will result in the development of a Maintenance Plan identifying environmental and deferred maintenance impacts and Action Plan. Resources are needed to conduct detailed artwork inspection and condition report.	Will require resources to perform artwork inspections and condition report. In addition, possible professional conservator report identifying recommendations, as well as implementation of specialized cleaning, repairs and conservation.	Will request dedicated staff and resources in future years.
144	El Monte Transit Center Donald Lipski <i>Time Piece</i> Stainless steel sculpture; painted steel and electronic sculpture	2012	Inspections will result in the development of a Maintenance Plan identifying environmental and deferred maintenance impacts and Action Plan. Resources are needed to conduct detailed artwork inspection and condition report.	Corrosion present. Artwork inspection and condition report required. Will require resources to perform artwork inspections and condition report. In addition, possible professional conservator report identifying recommendations, as well as implementation of specialized cleaning, repairs and conservation.	Will request dedicated staff and resources in future years.
145	Harbor Gateway Transit Center Alison Saar <i>Paraje</i> Stainless steel sculpture	2012	Inspections will result in the development of a Maintenance Plan identifying environmental and deferred maintenance impacts and Action Plan. Resources are needed to conduct detailed artwork inspection and condition report.	Corrosion present. Artwork inspection and condition report required. Will require resources to perform artwork inspections and condition report. In addition, possible professional conservator report identifying recommendations, as well as implementation of specialized cleaning, repairs and conservation.	Will request dedicated staff and resources in future years.
146	El Monte Transit Center Eloy Torrez <i>The Steps We Take</i> Powder coated sublimation murals	2014	Inspections will result in the development of a Maintenance Plan identifying environmental and deferred maintenance impacts and Action Plan. Resources are needed to conduct detailed artwork inspection and condition report.	Will require resources to perform artwork inspections and condition report. In addition, possible professional conservator report identifying recommendations, as well as implementation of specialized cleaning, repairs and conservation.	Will request dedicated staff and resources in future years.
147	El Monte Transit Center Martin Durazo <i>Vamos Juntos/Juntas</i> Powder coated sublimation murals	2014	Inspections will result in the development of a Maintenance Plan identifying environmental and deferred maintenance impacts and Action Plan. Resources are needed to conduct detailed artwork inspection and condition report.	Will require resources to perform artwork inspections and condition report. In addition, possible professional conservator report identifying recommendations, as well as implementation of specialized cleaning, repairs and conservation.	Will request dedicated staff and resources in future years.
148	El Monte Transit Center Phung Huynh <i>In The Meadow</i> Powder coated sublimation murals	2014	Inspections will result in the development of a Maintenance Plan identifying environmental and deferred maintenance impacts and Action Plan. Resources are needed to conduct detailed artwork inspection and condition report.	Will require resources to perform artwork inspections and condition report. In addition, possible professional conservator report identifying recommendations, as well as implementation of specialized cleaning, repairs and conservation.	Will request dedicated staff and resources in future years.
149	El Monte Transit Center Vincent Ramos <i>El Monte Legion Stadium</i> Powder coated sublimation murals	2014	Inspections will result in the development of a Maintenance Plan identifying environmental and deferred maintenance impacts and Action Plan. Resources are needed to conduct detailed artwork inspection and condition report.	Will require resources to perform artwork inspections and condition report. In addition, possible professional conservator report identifying recommendations, as well as implementation of specialized cleaning, repairs and conservation.	Will request dedicated staff and resources in future years.

Metro Facilities					
Station	Artist / Artwork Title / Components	Year Installed	Annual Maintenance Requirements	Condition Status	Action Plan
150	Union Station: Gateway Transit Center James Doolin <i>Los Angeles Circa 1870, 1910, 1950 and after 2000</i> Painted murals	1995	Inspections will result in the development of a Maintenance Plan identifying environmental and deferred maintenance impacts and Action Plan. Resources are needed to conduct detailed artwork inspection and condition report.	Will require resources to perform artwork inspections and condition report. In addition, possible professional conservator report identifying recommendations, as well as implementation of specialized cleaning, repairs and conservation.	Will request dedicated staff and resources in future years.
151	Union Station: Gateway Transit Center Margaret Nielsen <i>LA Dialogs</i> Painted mural	1995	Inspections will result in the development of a Maintenance Plan identifying environmental and deferred maintenance impacts and Action Plan. Resources are needed to conduct detailed artwork inspection and condition report.	Will require resources to perform artwork inspections and condition report. In addition, possible professional conservator report identifying recommendations, as well as implementation of specialized cleaning, repairs and conservation.	Will request dedicated staff and resources in future years.
152	Union Station: Gateway Transit Center Patrick Nagatani <i>Epoch</i> Painted mural	1995	Inspections will result in the development of a Maintenance Plan identifying environmental and deferred maintenance impacts and Action Plan. Resources are needed to conduct detailed artwork inspection and condition report.	Will require resources to perform artwork inspections and condition report. In addition, possible professional conservator report identifying recommendations, as well as implementation of specialized cleaning, repairs and conservation.	Will request dedicated staff and resources in future years.
153	Union Station: Gateway Transit Center May Sun and Richard Wyatt <i>City of Dreams, River of History</i> Pigmented concrete, glass, steel and ceramic tile fountain; stone, patinated bronze paving; ceramic tile	1995	Inspections will result in the development of a Maintenance Plan identifying environmental and deferred maintenance impacts and Action Plan. Resources are needed to conduct detailed artwork inspection and condition report.	Water issues at soffit. Will require resources to perform artwork inspections and condition report. In addition, possible professional conservator report identifying recommendations, as well as implementation of specialized cleaning, repairs and conservation.	Will request dedicated staff and resources in future years.
154	Union Station: Gateway Transit Center Richard Wyatt <i>City of Dreams, River of History</i> Painted mural	1995	Inspections will result in the development of a Maintenance Plan identifying environmental and deferred maintenance impacts and Action Plan. Resources are needed to conduct detailed artwork inspection and condition report.	Artwork is dirty. Will require resources to perform artwork inspections and condition report. In addition, possible professional conservator report identifying recommendations, as well as implementation of specialized cleaning, repairs and conservation.	Will request dedicated staff and resources in future years.
155	Union Station: Gateway Transit Center Bill Bell <i>A Train</i> LED light sticks, audio and video components	1995	Inspections will result in the development of a Maintenance Plan identifying environmental and deferred maintenance impacts and Action Plan. Resources are needed to conduct detailed artwork inspection and condition report.	Will require resources to perform artwork inspections and condition report. In addition, possible professional conservator report identifying recommendations, as well as implementation of specialized cleaning, repairs and conservation.	Will request dedicated staff and resources in future years.
156	Union Station: Gateway Transit Center East Los Streetscapers <i>La Sombra del Arroyo</i> Painted bronze sculpture; ceramic tile; stone tile	1995	Inspections will result in the development of a Maintenance Plan identifying environmental and deferred maintenance impacts and Action Plan. Resources are needed to conduct detailed artwork inspection and condition report.	Will require resources to perform artwork inspections and condition report. In addition, possible professional conservator report identifying recommendations, as well as implementation of specialized cleaning, repairs and conservation.	Will request dedicated staff and resources in future years.
157	Union Station: Gateway Transit Center Kim Yausda & Noel Korten <i>ReUnion</i> Stainless steel, glass and copper bus shelters	1995	Inspections will result in the development of a Maintenance Plan identifying environmental and deferred maintenance impacts and Action Plan. Resources are needed to conduct detailed artwork inspection and condition report.	Broken glass panel. Will require resources to perform artwork inspections and condition report. In addition, possible professional conservator report identifying recommendations, as well as implementation of specialized cleaning, repairs and conservation.	Will request dedicated staff and resources in future years.
158	Union Station: Gateway Transit Center Michael Amescua <i>Guardians of the Track</i> Painted steel panels; anodized aluminum panels	1995	Inspections will result in the development of a Maintenance Plan identifying environmental and deferred maintenance impacts and Action Plan. Resources are needed to conduct detailed artwork inspection and condition report.	Artwork is in need of corrosion mitigation, cleaning and paint. Will require resources to perform artwork inspections and condition report. In addition, possible professional conservator report identifying recommendations, as well as implementation of specialized cleaning, repairs and conservation.	Will request dedicated staff and resources in future years.

Metro Facilities					
Station	Artist / Artwork Title / Components	Year Installed	Annual Maintenance Requirements	Condition Status	Action Plan
159	Union Station: Gateway Transit Center Peter Shire <i>Paseo Cesar Chavez</i> Fountain, ceramic tile benches	1995	Inspections will result in the development of a Maintenance Plan identifying environmental and deferred maintenance impacts and Action Plan. Resources are needed to conduct detailed artwork inspection and condition report.	Will require resources to perform artwork inspections and condition report. In addition, possible professional conservator report identifying recommendations, as well as implementation of specialized cleaning, repairs and conservation.	Will request dedicated staff and resources in future years.
160	Union Station: Gateway Transit Center Elsa Flores <i>Paseo Cesar Chavez</i> Fountain, ceramic tile benches	1995	Inspections will result in the development of a Maintenance Plan identifying environmental and deferred maintenance impacts and Action Plan. Resources are needed to conduct detailed artwork inspection and condition report.	Will require resources to perform artwork inspections and condition report. In addition, possible professional conservator report identifying recommendations, as well as implementation of specialized cleaning, repairs and conservation.	Will request dedicated staff and resources in future years.
161	Union Station: Gateway Transit Center Roberto Gil de Montes <i>Paseo Cesar Chavez</i> Fountain, ceramic tile benches	1995	Inspections will result in the development of a Maintenance Plan identifying environmental and deferred maintenance impacts and Action Plan. Resources are needed to conduct detailed artwork inspection and condition report.	Will require resources to perform artwork inspections and condition report. In addition, possible professional conservator report identifying recommendations, as well as implementation of specialized cleaning, repairs and conservation.	Will request dedicated staff and resources in future years.
162	Union Station Passageway Rotating Artist <i>Rotating Photo Installations</i> Anodized aluminum, plexiglass, duratrans film	2001	Inspections will result in the development of a Maintenance Plan identifying environmental and deferred maintenance impacts and Action Plan. Resources are needed to conduct detailed artwork inspection and condition report.	Artwork requires new polycarbonate sheeting. Will require resources to perform artwork inspections and condition report. In addition, possible professional conservator report identifying recommendations, as well as implementation of specialized cleaning, repairs and conservation.	Will request dedicated staff and resources in future years.
163	Metro Customer Service Center (former) Jim Isermann <i>Untitled (Tilfords)</i> Powder coated aluminum panels	2006	Inspections will result in the development of a Maintenance Plan identifying environmental and deferred maintenance impacts and Action Plan. Resources are needed to conduct detailed artwork inspection and condition report.	Artwork removed as part of Purple Line Extension. Artwork to be relocated /re-purposed.	Will request dedicated staff and resources in future years.
164	Division 9 Facility Raul de la Sota <i>Forward to the Past</i> Painted honey comb aluminum mural	2007	Inspections will result in the development of a Maintenance Plan identifying environmental and deferred maintenance impacts and Action Plan. Resources are needed to conduct detailed artwork inspection and condition report.	Will require resources to perform artwork inspections and condition report. In addition, possible professional conservator report identifying recommendations, as well as implementation of specialized cleaning, repairs and conservation.	Will request dedicated staff and resources in future years.
165	Division 9 Facility Mark Lere <i>The Metro Machine</i> Terrazzo mural paving	2007	Inspections will result in the development of a Maintenance Plan identifying environmental and deferred maintenance impacts and Action Plan. Resources are needed to conduct detailed artwork inspection and condition report.	Will require resources to perform artwork inspections and condition report. In addition, possible professional conservator report identifying recommendations, as well as implementation of specialized cleaning, repairs and conservation.	Will request dedicated staff and resources in future years.
166	Division 24 Facility Christine Beniston <i>Field of Poppies</i> Powder coated steel laced into fencing	2015	Inspections will result in the development of a Maintenance Plan identifying environmental and deferred maintenance impacts and Action Plan. Resources are needed to conduct detailed artwork inspection and condition report.	Will require resources to perform artwork inspections and condition report. In addition, possible professional conservator report identifying recommendations, as well as implementation of specialized cleaning, repairs and conservation.	Will request dedicated staff and resources in future years.
167	Division 13 Facility Christine Ulke <i>El Aliso de Los Angeles</i> Illuminated polycarbonate panels with graphic PVB film layers, LEDs	2015	Inspections will result in the development of a Maintenance Plan identifying environmental and deferred maintenance impacts and Action Plan. Resources are needed to conduct detailed artwork inspection and condition report.	Will require resources to perform artwork inspections and condition report. In addition, possible professional conservator report identifying recommendations, as well as implementation of specialized cleaning, repairs and conservation.	Will request dedicated staff and resources in future years.
168	Union Station: Gateway Transit Center and Pedestrian Drop Off Area (POV) Michael Amescua <i>Guardians of the Rail</i> Painted steel panels; Painted aluminum panels	2016	Inspections will result in the development of a Maintenance Plan identifying environmental and deferred maintenance impacts and Action Plan. Resources are needed to conduct detailed artwork inspection and condition report.	Will require resources to perform artwork inspections and condition report. In addition, possible professional conservator report identifying recommendations, as well as implementation of specialized cleaning, repairs and conservation.	Will request dedicated staff and resources in future years.

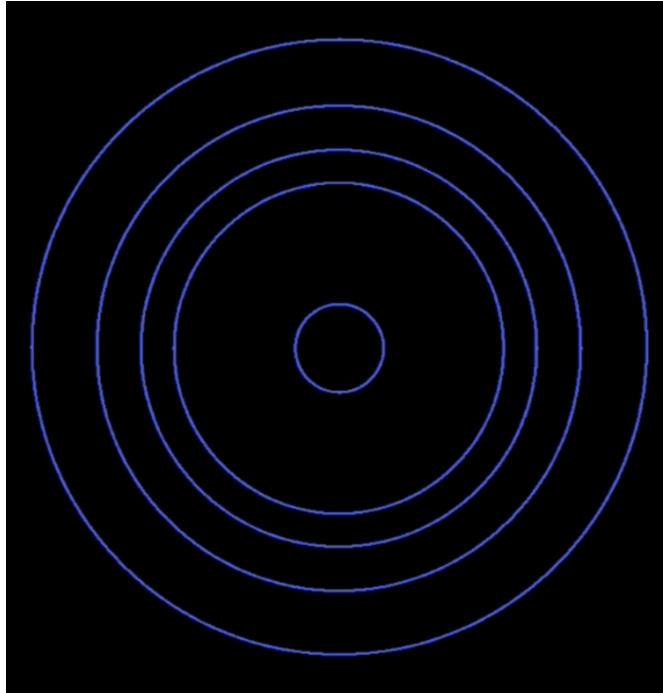
Examples



Metro Blue Line – Artworks impacted as part of Blue Line Refurbishment Project, require renovation



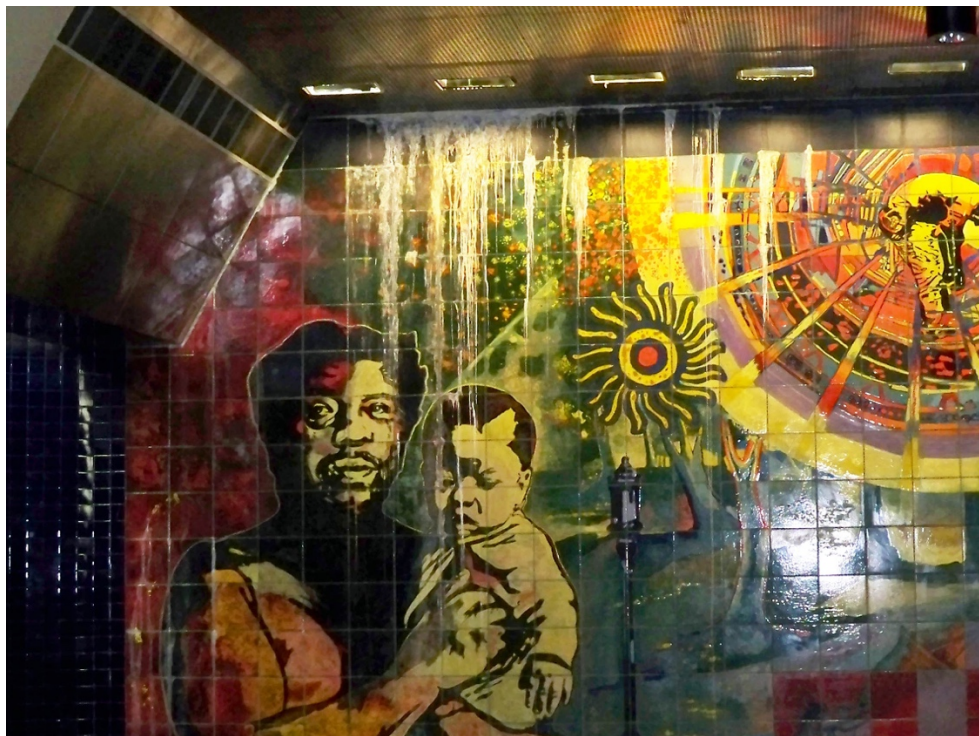
Metro Blue Line – Damaged artwork mosaic tile requires specialized repairs



Original artwork (1 of 82)



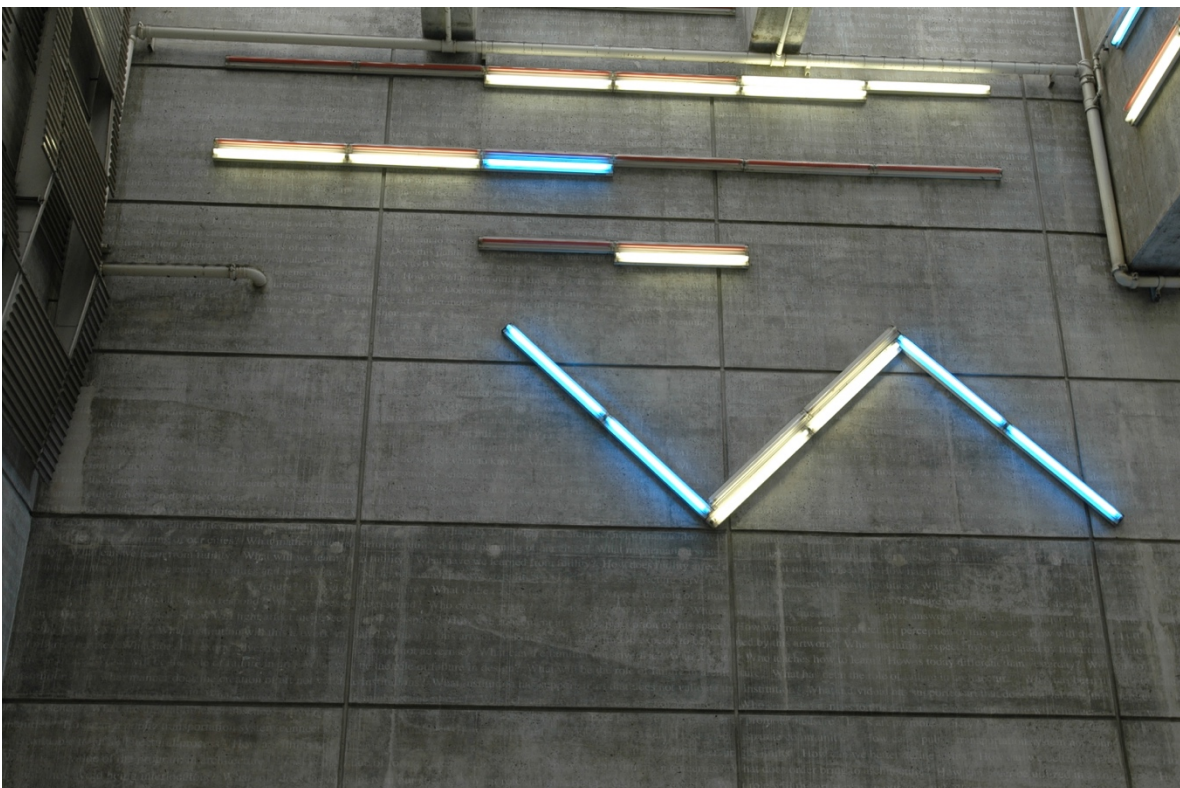
Metro Blue/Expo Tunnel – Outdated electrical artworks not functioning as intended



Metro Red Line – Artworks require specialized repair



Metro Red Line – Damaged artwork tile requires specialized repairs



Metro Red Line – Outdated electrical artworks require renovation



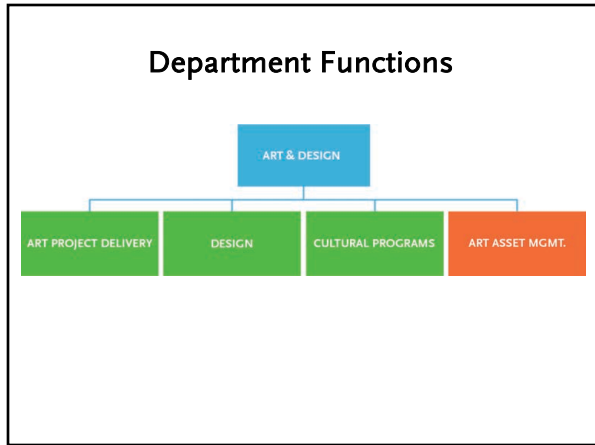
Metro Red Line – Artworks require renovation and relocation



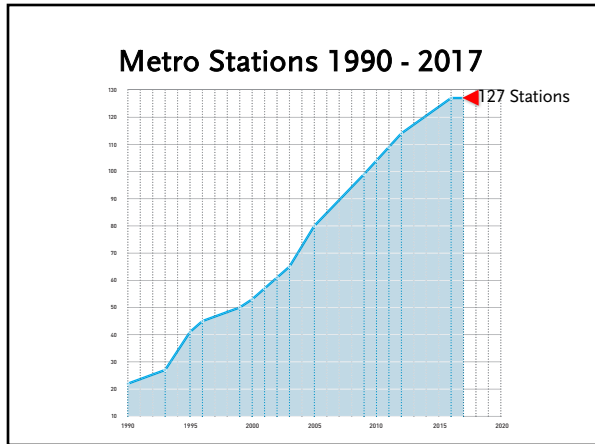
Metro Red Line – Artworks require specialized cleaning



- ### Board Motion
- A. Provide Annual Report
 - B. Dedicate resources
 - C. Include in future refurbishment projects
 - D. Budget as new artworks completed
 - E. Create maintenance plan for each artwork
 - F. Develop action plan



- ### Metro Public Art Assets
- Growing (and aging) system
 - 168 permanent artworks
 - Many artworks are now 25+ years old
 - Wear and tear impacts
 - Facility modification impacts
 - Deferred care becoming increasingly visible
 - Unique assets require specialized approach



“Los Angeles may have some of the most innovative integration of art and architecture in the country.”

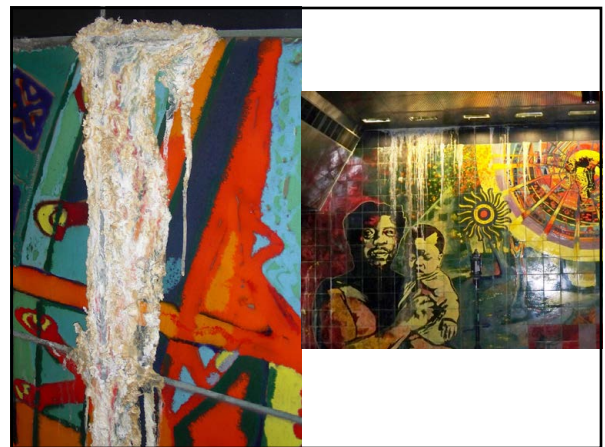
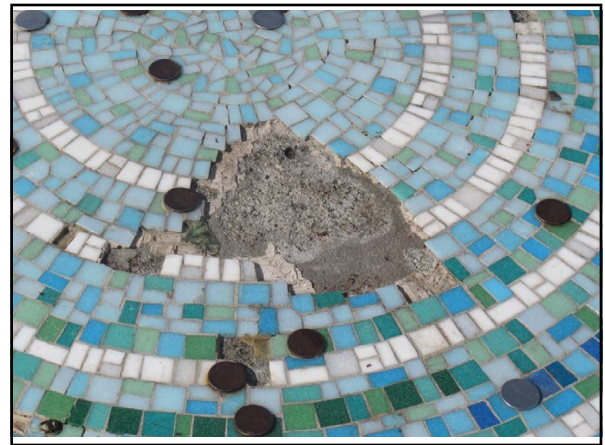
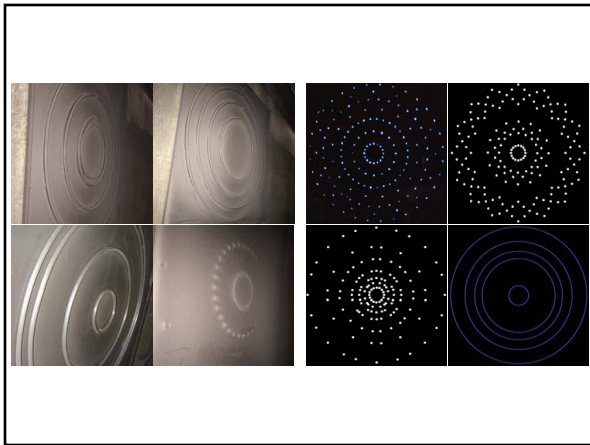
Los Angeles Times

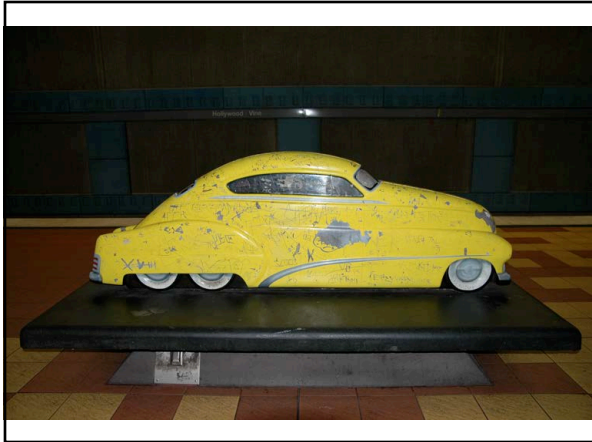
“Fascinating artwork...artwork worth seeing... Beautiful and breathtaking in its ambition and Execution.”

Washington Post

“...one of the most imaginative public art programs in the country.”

New York Times





Operations Start Up Currently Includes

Operators & Mechanics	Yes
Traction Power	Yes
Facilities Maintenance	Yes
Custodial Services	Yes
Landscape Maintenance	Yes
Graffiti Abatement	Yes
Art Asset Management	No

Phased Approach to Art Asset Mgmt.

Existing Lines:

- Line by line as each reaches 20 to 25 years

New Lines:

- Apply lessons learned
- Include art asset management in start up plans

FY18	FY19	FY21	FY23
Blue (28)	Blue (28) Red (33)	Blue (28) Red (33) Green (15) Crenshaw(14)	Blue (28) Red (33) Green(15) Crenshaw(14) Gold (28)

