

**Board Report**

---

**File #:** 2017-0152, **File Type:** Project**Agenda Number:** 23.

---

**PLANNING AND PROGRAMMING COMMITTEE  
APRIL 19, 2017****SUBJECT: WEST SANTA ANA BRANCH TRANSIT CORRIDOR****ACTION: INITIATE DRAFT ENVIRONMENTAL PROCESS****RECOMMENDATION**

AUTHORIZE the Chief Executive Officer to:

- A. APPROVE Project Definition for Environmental Scoping including four Northern Alignment Options; and
- B. RECEIVE AND FILE the **West Santa Ana Branch (WSAB) Transit Corridor Northern Alignment Options Screening Report**.

**ISSUE**

In February 2013, the Southern California Association of Governments (SCAG) approved the WSAB Alternative Analysis (AA) Study for the 34-mile corridor from the Los Angeles Union Station (LAUS) to the City of Santa Ana in Orange County. The Los Angeles County portion of the corridor extends 20 miles from the LAUS to the City of Artesia. The AA Study recommended Light Rail Transit (LRT) alignment as the preferred transit mode. The AA Study also recommended two northern alignment alternatives for further consideration: 1) West Bank 3 along the west bank of the Los Angeles (LA) River, and 2) East Bank along east bank of the LA River.

Based upon the West Bank 3 alternative, four new northern alignment options were identified as part of the Technical Refinement Study (TRS) that was completed and received by the Metro Board in September 2015. Prior to initiation of the Environmental Scoping, a screening evaluation was conducted to further refine the recommendations from the TRS and recommended four highest performing northern alignment options be carried into Environmental Scoping. Subsequently, the Northern Alignment Options Screening Report has been finalized. Attachment A contains the Executive Summary. The full report can be accessed at [www.metro.net/wsab](http://www.metro.net/wsab) <<http://www.metro.net/wsab>>.

In addition to the four northern alignment options, the TRS also focused on the following key challenges identified by the SCAG AA Study: 1) Southern Terminus, 2) New Green Line Station; 3) Huntington Park Alignment & Stations; and 4) Access into LAUS. Since the TRS was only based

---

upon a 5% level of design, the findings from the TRS will form the basis of the Project Definition to be further analyzed and carried forward into Environmental Scoping. Based on public comments received during Scoping, additional options may also be included for further evaluation in the environmental study. Attachment B contains the WSAB Transit Corridor Project Definition map proposed for use in upcoming Scoping meetings.

## **DISCUSSION**

### **Background**

The WSAB Transit Corridor Study Area traverses densely populated, low-income and heavily transit dependent communities. The Study Area is approximately 98 square miles and covers 20 individual cities as well as portions of unincorporated Los Angeles County.

In September 2016, the Board awarded professional services contracts to complete the environmental clearance study for the WSAB Transit Corridor. The base contract is to complete the Draft Environmental Impact Report (EIR) pursuant to California Environmental Quality Act (CEQA) requirements. With the passage of Measure M, Metro is working to secure FTA approval to complete the Draft Environmental Impact Statement (EIS) pursuant to National Environmental Policy Act (NEPA) requirements concurrently with the EIR.

### **Project Definition**

The WSAB Transit Corridor stretches 20 miles from LAUS to the City of Artesia. A single alignment has been identified south of the City of Huntington Park which follows the San Pedro Subdivision Branch (owned by Port of Los Angeles and Long Beach), to the eight-mile Metro owned abandoned Pacific Electric Right-of-Way (ROW) to the southern terminus in the City of Artesia. The Project Definition for Environmental Scoping includes the recommendations from the SCAG AA Study along with the refinement and findings described below from the TRS and further evaluation from the finalized Northern Alignment Options Screening Report, north of the City of Huntington Park.

#### ***New Southern Terminus Station in the City of Artesia***

The SCAG AA Study originally included a station at Bloomfield Avenue in the City of Cerritos as the last station within Los Angeles County. At the City of Cerritos' request, SCAG removed this station from further consideration. The next station to the north was Pioneer Station in the City of Artesia which is accessed by way of traversing through the City of Cerritos. In the TRS, Pioneer Station was analyzed and deemed feasible as the new southern terminus.

In the event that the line should be extended to Orange County in the future, the environmental analysis will include evaluation of a potential station at Bloomfield for which the support of the City of Cerritos would be sought. Metro will continue to meet with staff from both the cities of Artesia and Cerritos regarding the terminus station in Artesia and future extension options.

#### ***New Metro Green Line Station***

Analysis was conducted to determine the feasibility and challenges associated with a new Metro Green Line Station within the median of the I-105 Freeway east of the I-105/I-710 Interchange. This

---

station would provide a direct transfer to the WSAB project aerial station proposed immediately above it. Based on the conceptual plans, a new Metro Green Line station can feasibly be built within the existing I-105 Freeway and ROW. This station concept will be further advanced, including coordination with the ExpressLanes project and more detailed planning and design evaluations with Caltrans.

#### *City of Huntington Park Station Locations*

At the conclusion of the SCAG AA Study, the City of Huntington Park proposed alternate station locations to the ones proposed in the SCAG AA. The proposed alternate locations include a station on Randolph St. east of Pacific Blvd. and a station south of Florence Ave. in the center of Salt Lake Ave. Both alternate station locations were deemed feasible and can be carried forward to replace the previous locations identified in the SCAG AA study.

#### *Northern Terminus at Los Angeles Union Station*

Analysis was conducted to determine placement of a new light rail platform to serve as the northern terminus within LAUS. In coordination with other in-process projects such as the Union Station Master Plan, Link Union Station (Link US) and California High Speed Rail, the environmental analysis will evaluate station options above or adjacent to the existing Metro Gold Line station.

#### *Northern Alignment Analysis*

As part of the TRS, four new northern alignment options were developed and recommended for further analysis:

- 1) Pacific/Alameda
- 2) Pacific/Vignes
- 3) Alameda
- 4) Alameda/Vignes

The two Pacific Boulevard alignment options (1 & 2) use Pacific Boulevard in the Cities of Vernon and Huntington Park for the light rail tracks within the street, while the Alameda Street alignment options (3 & 4) utilizes the existing Metro Blue Line ROW for separate light rail tracks. All four alignment options have a northern terminus at LAUS.

#### Northern Alignment Options Screening Report

A screening evaluation process was conducted to further refine the recommendations in the TRS. Specifically, the six northern alignment options were evaluated to determine how well these met the goals and objectives of the project. Specifically, the five project goals included:

- Goal 1: Provide Mobility Improvements
- Goal 2: Support Local and Regional Land Use Plans and Policies
- Goal 3: Minimize Environmental Impacts
- Goal 4: Ensure Cost Effectiveness and Financial Feasibility
- Goal 5: Ensure Equity

For each goal, a list of evaluation criteria was established. Each of the six northern alignment options was assessed and a score was given based on its potential performance in meeting the

criteria. An overall rating of “high”, “medium”, or “low” was assigned based on each alignment option’s ability to achieve the objectives and criteria of the goals.

Based on the results of the screening analysis, the four northern alignment options: 1) Pacific/Alameda, 2) Pacific/Vignes, 3) Alameda, and 4) Alameda/Vignes were the highest performing and recommended to be carried forward into environmental analysis. All four provide a direct connection into Union Station, the greatest overall mobility improvement benefits, compatibility with existing land uses, environmental benefits for disadvantaged communities, cost-effectiveness with the fewest engineering challenges and support community needs. The East Bank and West Bank 3 northern alignment options previously recommended by SCAG AA Study do not meet the purpose and need of the project as effectively as the other four northern alignment options and are not recommended for advancement.

### Metro Board Blue Line Motion

On February 23, 2017, the Metro Board approved a Motion (Item #37) which called for the study of several Metro Blue Line and Metro Expo Line improvements. An Amendment to the Motion (Garcetti) specifically called for the WSAB (Eco-Rapid Transit Line) to incorporate a potential Metro Blue Line Express train concept that could ultimately run directly to Union Station. This concept could potentially be feasible if one of the WSAB Northern Alignment options (Alameda Alignment or Alameda/Vignes Alignment) is selected as the preferred alternative. The WSAB project will evaluate the feasibility of interlining Metro Blue Line trains with WSAB trains as a part of the environmental study going forward.

### Outreach

Since the award of the environmental clearance contracts, the WSAB Project Team has conducted numerous briefings and presentations to Eco-Rapid Transit JPA, corridor cities, area elected officials and key stakeholders throughout the study area to provide project background information and updates, as well as receive valuable input for use in the environmental study process. The Project Team also initiated a Technical Advisory Committee in March, and conducted a Legislative Update meeting with state and federal elected officials’ staff along the corridor in April.

### Scoping Process

To initiate the Draft EIR process, Metro will be conducting five Scoping meetings - one agency Scoping meeting and four community meetings within the project area. The Scoping meetings are expected to be held between May - June 2017.

Metro will also post the Notice of Preparation (NOP) with the State Clearinghouse. Metro Community Relations Manager is also working with the outreach contractor on updating the project webpage, fact sheet and other materials in preparation for the Scoping meetings. Pending approval from FTA of a concurrent EIR/EIS process, Metro may also initiate the Notice of Intent (NOI) with the Federal Register.

## **DETERMINATION OF SAFETY IMPACT**

These actions will not have any impact on the safety of our customers and/or employees.

## **FINANCIAL IMPACT**

The FY 2016-17 budget includes \$1,000,000 in Cost Center 4370, Project 460201 (WSAB Transit Corridor). Since these are multi-year contracts, the Cost Center Manager and Chief Planning Officer will be responsible for budgeting in future years.

### Impact to Budget

The funding for this project is from Measure R 35%. As these funds are earmarked for the WSAB Transit Corridor project, they are not eligible for Metro bus and rail capital and operating expenditures.

## **ALTERNATIVES CONSIDERED**

The Board could consider deferring initiation of the Scoping period. This alternative is not recommended as this would impact the project schedule and would not be consistent with prior Board direction to advance completion of the project.

## **NEXT STEPS**

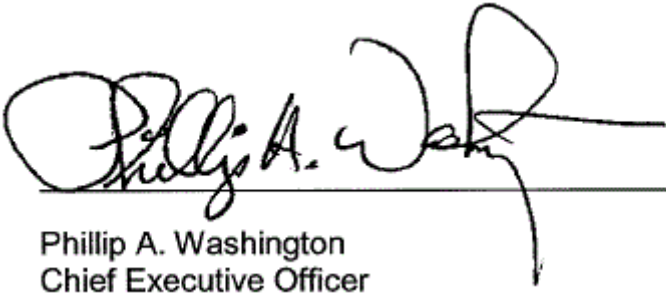
Upon Board approval, staff will initiate the Scoping period in late spring which will include Agency and Public Scoping Meetings along the corridor to present project information and gather inputs. At the completion of the Scoping Period, we will return to the Board later this year with the Scoping Summary Report.

## **ATTACHMENTS**

Attachment A - Northern Alignment Options Screening Report Executive Summary  
Attachment B - West Santa Ana Branch Transit Corridor Project Definition Map

Prepared by: Teresa Wong, Senior Manager, (213) 922-2854  
Fanny Pan, Senior Director, (213) 922-3070  
David Mieger, Interim Senior Executive Officer, (213) 922-3040

Reviewed by: Therese W. McMillan, Chief Planning Officer, (213) 922-7077



Phillip A. Washington  
Chief Executive Officer



West Santa Ana Branch Transit Corridor

# Final Northern Alignment Options Screening Report Executive Summary

Los Angeles County  
Metropolitan Transportation Authority

## TABLE OF CONTENTS

<b>EXECUTIVE SUMMARY .....</b>	<b>ES 1</b>
ES.1 WSAB Transit Corridor Study Area Overview .....	ES 2
ES.2 Purpose and Need Statement .....	ES 4
ES.3 Goals, Objectives, and Evaluation Criteria .....	ES 5
ES.4 Northern Alignment Options .....	ES 7
ES.5 Screening Evaluation .....	ES 16
ES.6 Summary and Recommendations .....	ES 23
ES.7 Recommendations and Next Steps .....	ES 24

### Tables

Table ES-1. Goals, Objectives, and Evaluation Criteria .....	ES 6
Table ES-2. Characteristics of the Northern Alignment Options .....	ES 8
Table ES-3. Scoring Methodology.....	ES 16
Table ES-4. Goal 1: Provide Mobility Improvements .....	ES 17
Table ES-5. Goal 2: Support Local and Regional Land Use Plans and Policies .....	ES 19
Table ES-6. Goal 3: Minimize Environmental Impacts during Construction and Operation.....	ES 20
Table ES-7. Goal 4: Ensure Cost Effectiveness and Financial Feasibility.....	ES 21
Table ES-8. Goal 5: Ensures Equity.....	ES 22
Table ES-9. Summary of Results.....	ES 24

### Figures

Figure ES-1. WSAB Transit Corridor Study Area .....	ES 3
Figure ES-2. Evaluation Process .....	ES 5
Figure ES-3. WSAB Transit Corridor .....	ES 9
Figure ES-4. East Bank Alignment Option .....	ES 10
Figure ES-5. West Bank 3 Alignment Option.....	ES 11
Figure ES-6. Pacific/Alameda Alignment Option.....	ES 12
Figure ES-7. Pacific/Vignes Alignment Option.....	ES 13
Figure ES-8. Alameda Alignment Option.....	ES 14
Figure ES-9. Alameda/Vignes Alignment Option .....	ES 15



## ACRONYMS AND ABBREVIATIONS

AA	Alternatives Analysis
EJ	Environmental Justice
Environmental Study	West Santa Ana Branch Transit Corridor Environmental Study
LA County	Los Angeles County
LRT	light rail transit
Metro	Los Angeles County Metropolitan Transportation Authority
PEROW/WSAB	Pacific Electric Right-of-Way/West Santa Ana Branch
Project	West Santa Ana Branch Transit Corridor
ROW	right-of-way
SCAG	Southern California Association of Governments
Study Area	West Santa Ana Branch Transit Corridor Study Area
TOD	transit-oriented development
TRS	Technical Refinement Study
VMT	vehicle miles traveled
WSAB	West Santa Ana Branch

## EXECUTIVE SUMMARY

The West Santa Ana Branch (WSAB) Transit Corridor (the Project) is a proposed light rail transit (LRT) line that would extend approximately 20 miles from downtown Los Angeles through southeast Los Angeles County (LA County), traversing densely populated, low-income, and heavily transit-dependent communities. The Project would provide reliable, fixed guideway transit service that would increase mobility and connectivity for historically underserved transit-dependent and environmental justice (EJ) communities; reduce travel times on local and regional transportation networks; and accommodate substantial future employment and population growth.

The Project is one of the many transit projects funded by Measure R (approved in November 2008) and Measure M (approved in November 2016). The Project is identified in the Los Angeles County Metropolitan Transportation Authority's (Metro) 2009 Long-Range Transportation Plan.

In March 2010, the Southern California Association of Governments (SCAG) initiated the Pacific Electric Right-of-Way (PEROW)/WSAB Alternatives Analysis (AA) Study in coordination with the relevant cities, the Orangeline Development Authority (now known as Eco-Rapid Transit), the Gateway Cities Council of Governments, Metro, the Orange County Transportation Authority, and the owners of the right-of-way (ROW). The AA Study evaluated a wide variety of transit connections and modes for the 34-mile corridor from Union Station in downtown Los Angeles to the City of Santa Ana in Orange County. In February 2013, SCAG completed the PEROW/WSAB AA Study and recommended LRT with two northern alternatives for further study: the East Bank and the West Bank Option 3 (West Bank 3).

In January 2014, following the completion of the AA Study, Metro initiated a Technical Refinement Study (TRS) of the WSAB Transit Corridor, focusing on five key issue areas along the 20-mile portion of the corridor within LA County:

- Access to Union Station
- Northern Alignment Options
- Huntington Park Alignment and Stations
- New Green Line Station
- Southern Terminus at Pioneer Station

In addition to the East Bank and West Bank 3 alignments recommended in the PEROW/WSAB AA Study, the TRS identified and recommended four variations of the West Bank 3 alignment between the City of Huntington Park and downtown Los Angeles: 1) the Pacific/Alameda and Pacific/Vignes alignment options that followed Pacific Boulevard through the cities of Huntington Park and Vernon, and 2) the Alameda and Alameda/Vignes alignment options that followed the existing Metro Blue Line ROW from Slauson Avenue to Washington Boulevard and headed north along Alameda Street (see Section ES.4 for Northern Alignment Option maps). The TRS concluded with the recommendation that the East Bank and West Bank 3 alternatives be dropped from further consideration and that the other four alignment options undergo additional study during the next phase of work.

In September 2016, Metro initiated the WSAB Transit Corridor Environmental Study (Environmental Study) with the goal of environmentally clearing the Project under the California Environmental Quality Act and the National Environmental Policy Act. The purpose of this Northern Alignment Options Screening Report is to screen the Project's northern alignment options that were analyzed in the TRS, which are defined as the alignment between downtown Los Angeles and the City of Huntington Park, and to identify the Project alternative(s) to be carried forward into scoping for the environmental process.

## ES.1 WSAB Transit Corridor Study Area Overview

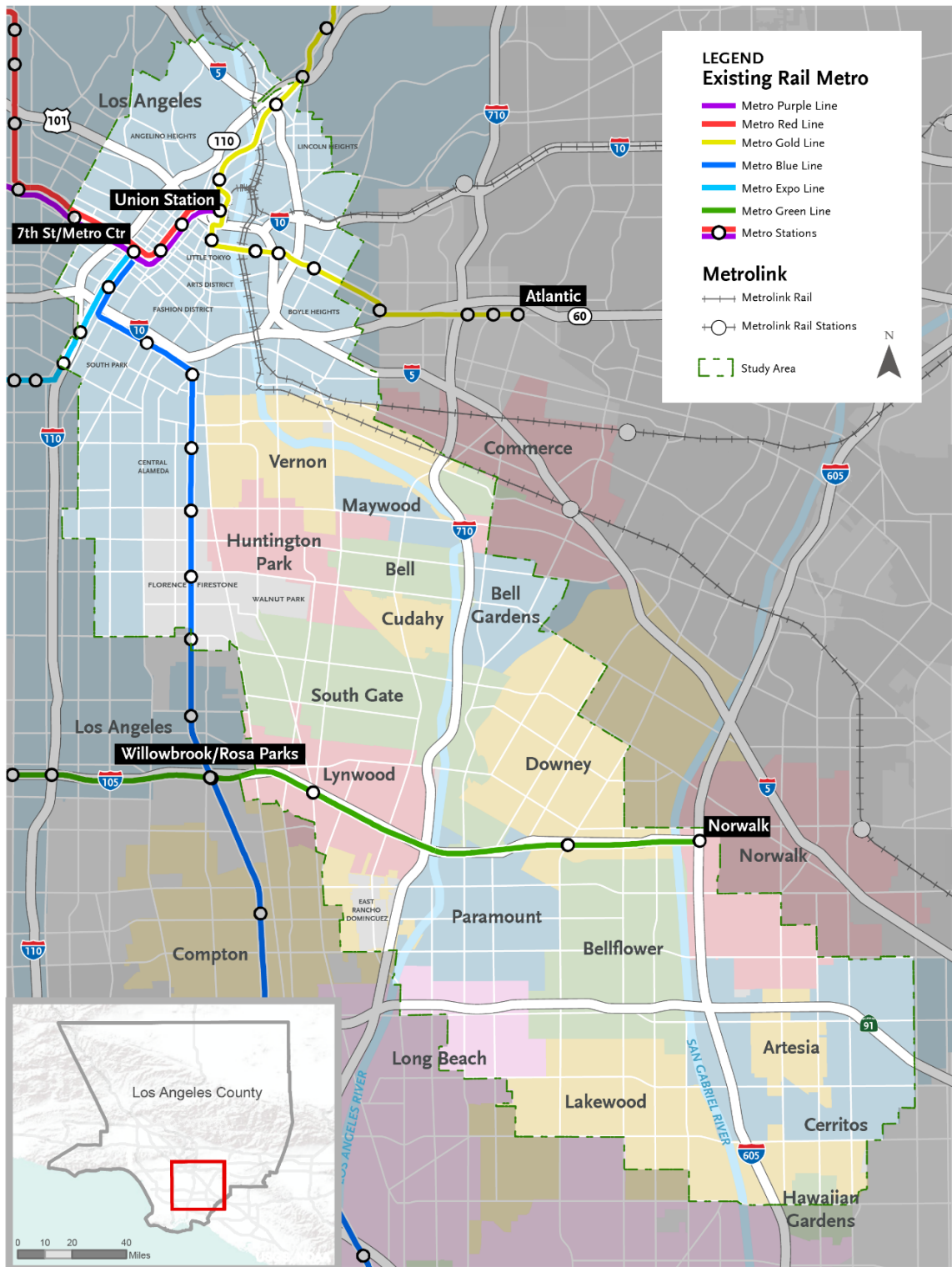
Stretching over 20 miles from Elysian Park on the north to the Los Angeles/Orange County line on the south, the WSAB Transit Corridor Study Area (Study Area) encompasses downtown Los Angeles, southeast Los Angeles, and much of the Gateway Cities subregion (Figure ES-1). The Study Area is approximately 98 square miles and incorporates 20 individual cities—the Cities of Los Angeles, Vernon, Maywood, Huntington Park, Commerce, Bell, Cudahy, Bell Gardens, South Gate, Lynwood, Compton, Downey, Paramount, Bellflower, Long Beach, Lakewood, Norwalk, Artesia, Cerritos and Hawaiian Gardens—as well as portions of unincorporated LA County. The Study Area traverses some of LA County's most densely developed and low-income residential neighborhoods and encompasses major regional employment centers, including the industrial and manufacturing backbone of the County.

The Study Area is currently home to 1.2 million residents and 584,000 jobs, which equates to 12 percent of the residents and 14 percent of the jobs in LA County. The Study Area's population and employment are both projected to increase by 2040—with population increasing by 25 percent to 1.5 million persons and employment increasing by 14 percent to 670,000 jobs. Many of the Study Area communities are characterized by heavily transit-dependent populations that currently lack access to a reliable transit network. The Study Area is also comprised of EJ communities. EJ communities are commonly identified as communities with a high combination of minority populations and/or low-income populations.

The Study Area is served by seven major freeways and a grid of north-south and east-west arterials. Much of this network is currently operating at level-of-service E or F during peak periods, indicating that the roadway network is already at or beyond capacity. Roadway congestion affects travel time and speed for all vehicles using the roadway, including buses. As a result of these reoccurring congestion levels, drivers encounter an increase in travel times associated with the low travel speeds. Exacerbating the issue is the low degree of travel time reliability, as travel speeds and travel times have significant daily variation.

Most of the transit service in the Study Area is provided by local and limited/express buses operating on the congested roadway network. While there are many bus routes serving the Study Area, most do not serve the predominant north-south direction of travel. In addition, traveling through the length of the Study Area requires several transfers between transit routes. Current regional commuter rail service is largely peripheral to the Study Area with Metrolink stations located at the edge of the Study Area (Union Station at the north end, Commerce to the east, and Norwalk to the south). Within the Study Area, there are six Metro Rail Lines (Red, Gold, Blue, Expo, Green, and Purple Lines); five of the six lines have stations in downtown Los Angeles (only the Green Line does not have a station downtown).

Figure ES-1. WSAB Transit Corridor Study Area



Source: WSP | Parsons Brinckerhoff (2016)

However, south of downtown Los Angeles, only two Metro Rail Lines (Blue and Green) have stations located within the communities that comprise the Study Area. The Metro Green Line service runs east-west through the Study Area, primarily along the I-105 freeway (from the Redondo Beach Station to the Norwalk Station). The Metro Blue Line service runs north-south through the Study Area along Flower Street, Washington Boulevard, and Long Beach Avenue (from Union Station to Long Beach Station). Although the Metro Green Line provides regional rail connections in the east-west direction and the Metro Blue Line in the north-south direction, both serve a limited portion of the Study Area.

The freeway, roadway, and rail network within the Study Area is also instrumental in supporting goods movement. The Study Area is home to the Alameda Corridor and intermodal rail yards, truck depots, warehouses, and distribution centers. Although these facilities that are used to move goods provide significant economic benefits within the Study Area, they also result in significant community and regional impacts from truck and train activity, such as historically poor air quality and congestion on arterials and freeways.

As population and employment continue to increase within the Study Area, daily travel also will increase. Under current (2012) conditions, the Study Area has 6.45 million daily person trips. Of these trips, 32 percent are within the Study Area; 31 percent are from the Study Area to destinations outside the Study Area; and 37 percent are into the Study Area from points outside the Study Area. By the year 2040, the Study Area's total daily person trips are projected to increase by 19 percent to approximately 7.67 million daily person trips. Of the 2040 daily person trips, 34 percent are trips within the Study Area; 30 percent are trips from the Study Area to destinations outside the Study Area; and 36 percent are trips into the Study Area from points outside the Study Area.

This increase of 1.22 million daily person trips between 2012 and 2040 in the Study Area will further burden the existing transportation network. Although auto travel is the predominant travel mode (with 78 percent of home-based work trips made by automobile), there is significant transit demand given the high proportion of transit-dependent populations. Overall, around 12 percent of the home-based work trips made by Study Area residents are currently made by transit, which is twice as high as the transit mode share of LA County as a whole.

## ES.2 Purpose and Need Statement

As population and employment in the WSAB Transit Corridor Study Area continues to grow, the already congested roadway network will become even more congested. This congestion affects not only automobiles but also the travel time, speeds, and reliability of the buses that operate in mixed-flow traffic. As the Study Area is home to communities that are heavily reliant on transit as their primary mode of travel to access jobs and other key destinations, this increasingly unreliable bus network will be insufficient to meet their mobility needs. Rail transit that operates in a dedicated ROW provides greater reliability and faster travel times during peak periods than buses because this service is not as affected by roadway congestion. However, the existing rail network only provides service along the periphery of the Study Area, thereby requiring transfers to reach the rail stations.

The purpose of the Project is to provide reliable transit service to meet the future mobility needs of residents, employees, and visitors who travel within the Study Area, which includes downtown Los Angeles, parts of southeast Los Angeles, and portions of the Gateway Cities

subregion. This new transit service will increase mobility and connectivity for historically underserved transit-dependent and EJ communities; reduce travel times on local and regional transportation networks; and accommodate substantial future employment and population growth.

More specifically, the Project's purpose is as follows:

- Establish a reliable transit service that will enhance the connectivity of the existing transit network and reduce transit travel times to local and regional destinations
- Accommodate future travel demand, including the high number of transit trips made by Study Area residents
- Improve access for the densely populated neighborhoods, major employment centers, and other key regional destinations where future growth is forecasted to occur within the Study Area
- Address mobility and access constraints faced by transit-dependent communities, thereby improving transit equity

### ES.3 Goals, Objectives, and Evaluation Criteria

Based on the purpose and need statement, a set of goals and objectives were established to guide development of the Project. During the development of the AA Study, goals and objectives were identified through a 24-month period of public meetings and work sessions with elected officials, stakeholders, advisory committee members, and communities. In 2015, as part of the TRS Report, goals of the project were further confirmed through technical meetings with key stakeholders, including Eco-Rapid Transit, corridor cities, and the California Department of Transportation.

The development and evaluation of the Project alternatives generally followed a six-step process. Figure ES-2 presents a flow chart of the evaluation process for the Project. Table ES-1 provides a list of the evaluation criteria established for each goal and set of objectives.

Figure ES-2. Evaluation Process

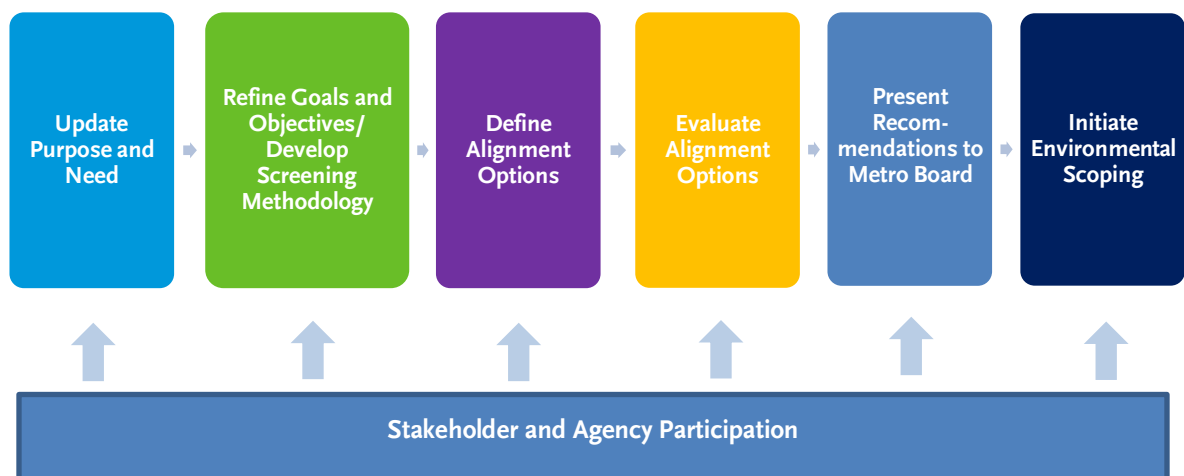


Table ES-1. Goals, Objectives, and Evaluation Criteria

#	Goals	Objectives	Evaluation Criteria
1	Provide Mobility Improvements	▪ Improves travel speeds and reduces travel times	▪ Daily hours of user benefits
		▪ Relieves high use (overcrowded) transit systems along the corridor	▪ Decrease in boardings on North-South Line (current Metro Blue Line)
		▪ Connects with the transit network	▪ Number of connections to other Metro Rail Lines ▪ Provides direct access to regional rail
		▪ Provides an alternative to a congested freeway and arterial network. Serves local and regional trips	▪ Number of daily boardings ▪ Number of new transit trips
		▪ Supports active transportation and first/last mile connections	▪ Number of connections to bicycle facilities
2	Support Local and Regional Land Use Plans and Policies	▪ Serves major employment centers and high-density residential neighborhoods	▪ 2040 population density within ½ mile of stations ▪ 2040 employment density within ½ mile of stations
		▪ Supports local economic development, projects, plans, and jobs	▪ Plans and policies supporting Transit-Oriented Development around stations
		▪ Serves affordable housing developments	▪ Number of existing affordable housing units within ½ mile of stations
		▪ Supports and is consistent with local plans	▪ Supported by existing local plans and programs
3	Minimize Environmental Impacts	▪ Minimizes environmental and community impacts	▪ Reduction in regional vehicle miles traveled
		▪ Minimizes impacts to the transportation network	▪ Impacts to roadway lanes, parking, and truck movement ▪ Minimal disruption to existing rail ROW
4	Ensure Cost Effectiveness and Financial Feasibility	▪ Costs are financially feasible	▪ Rough order of magnitude capital costs
		▪ Provides cost-effective project	▪ Cost/benefit (capital costs/boarding)
		▪ Minimizes risk of cost increase	▪ Engineering challenges ▪ Number of property acquisitions
5	Ensure Equity	▪ Provides benefits to transit-dependent and minority populations	▪ Percentage of transit-dependent persons within ½ mile of stations ▪ Percentage of station areas that qualify as EJ communities ▪ Provision of new reliable fixed service to underserved communities

Source: WSP | Parsons Brinckerhoff/TransLink Consulting. 2017



## ES.4 Northern Alignment Options

The Project would provide light rail service for approximately 20 miles from downtown Los Angeles to the City of Artesia (Figure ES-3). The Project would be primarily at-grade with grade-separated (i.e., aerial or underground) portions in areas of constraint. Six alignment options for the northern portion of the Project (Union Station to the Florence/Salt Lake Station<sup>1</sup>) were identified through the initial alternative development documented in the AA Study and further studied in the TRS. These six northern alignment options are summarized in Table ES-2 and described as follows:

- **East Bank:** Extends approximately 7.7 miles between Union Station and the Florence/Salt Lake Station along the east side of the LA River (Figure ES-4). This alignment option would provide three stations north of Florence/Salt Lake: Union Station, Soto, and Leonis/District. The East Bank alignment option was originally developed as part of the AA Study.
- **West Bank 3:** Extends approximately 6.9 miles between the Little Tokyo Station and the Florence/Salt Lake Station along the west side of the LA River (Figure ES-5). This alignment option would provide four stations north of Florence/Salt Lake: Little Tokyo, 7th/Alameda, Pacific/Vernon, and Pacific/Randolph. The West Bank 3 alignment option was originally developed as part of the AA Study.
- **Pacific/Alameda:** Extends approximately 7.4 miles between Union Station and Florence/Salt Lake Station (Figure ES-6). This alignment option uses Alameda Street, Santa Fe Avenue, and Pacific Boulevard and would provide five stations north of Florence/Salt Lake: Union Station, Little Tokyo, Arts District, Pacific/Vernon, and Pacific/Randolph. The Pacific/Alameda alignment option was developed during the TRS as a variation of the West Bank 3 alignment option but with a direct connection to Union Station on the north.
- **Pacific/Vignes:** Extends approximately 7.2 miles between Union Station and the Florence/Salt Lake Station (Figure ES-7). This alignment option uses Vignes Street, Santa Fe Avenue, and Pacific Boulevard and would provide four stations north of Florence/Salt Lake: Union Station, Arts District, Pacific/Vernon, and Pacific/Randolph. The Pacific/Vignes alignment option was developed during the TRS as a variation of the West Bank 3 alignment option but with a direct connection to Union Station on the north.
- **Alameda:** Extends approximately 8.0 miles between Union Station and the Florence/Salt Lake Station along Alameda Street and the Metro Blue Line ROW (Figure ES-8). This alignment option would provide seven stations north of Florence/Salt Lake: Union Station, Little Tokyo, 7th/Alameda, Washington, Vernon, Slauson, and Pacific/Randolph. This alignment option was developed during the TRS.
- **Alameda/Vignes:** Extends approximately 8.1 miles between Union Station and the Florence/Salt Lake Station along Vignes Street, Alameda Street, and Metro Blue Line ROW (Figure ES-9). This alignment option would provide seven stations north of the Florence/Salt Lake Station: Union Station, Arts District, 7th/Alameda, Washington, Vernon, Slauson, and Pacific/Randolph. This alignment option was developed during the TRS.

South of the Florence/Salt Lake Station, all six northern alignment options converge and follow a single alternative 11 miles from the City of Huntington Park to the City of Artesia (Figure ES-3). The alternative would use the San Pedro Subdivision Branch, owned by the Ports of Long Beach and Los

<sup>1</sup> The TRS recommended shifting the Florence/Gage Station identified in the SCAG AA Study south to the Florence/Salt Lake intersection.



Angeles. Along this portion, three stations are proposed at Firestone Boulevard, Gardendale Street, and I-105/Metro Green Line. The I-105/Metro Green Line Station would provide transfers and connections between the Project and the Metro Green Line<sup>2</sup>. South of the I-105/Metro Green Line Station, the alternative would transition to the Metro owned PEROW. Along this southern portion, four stations are proposed at Paramount/Rosecrans, Bellflower, Gridley/183rd, and Pioneer<sup>3</sup>.

**Table ES-2. Characteristics of the Northern Alignment Options**

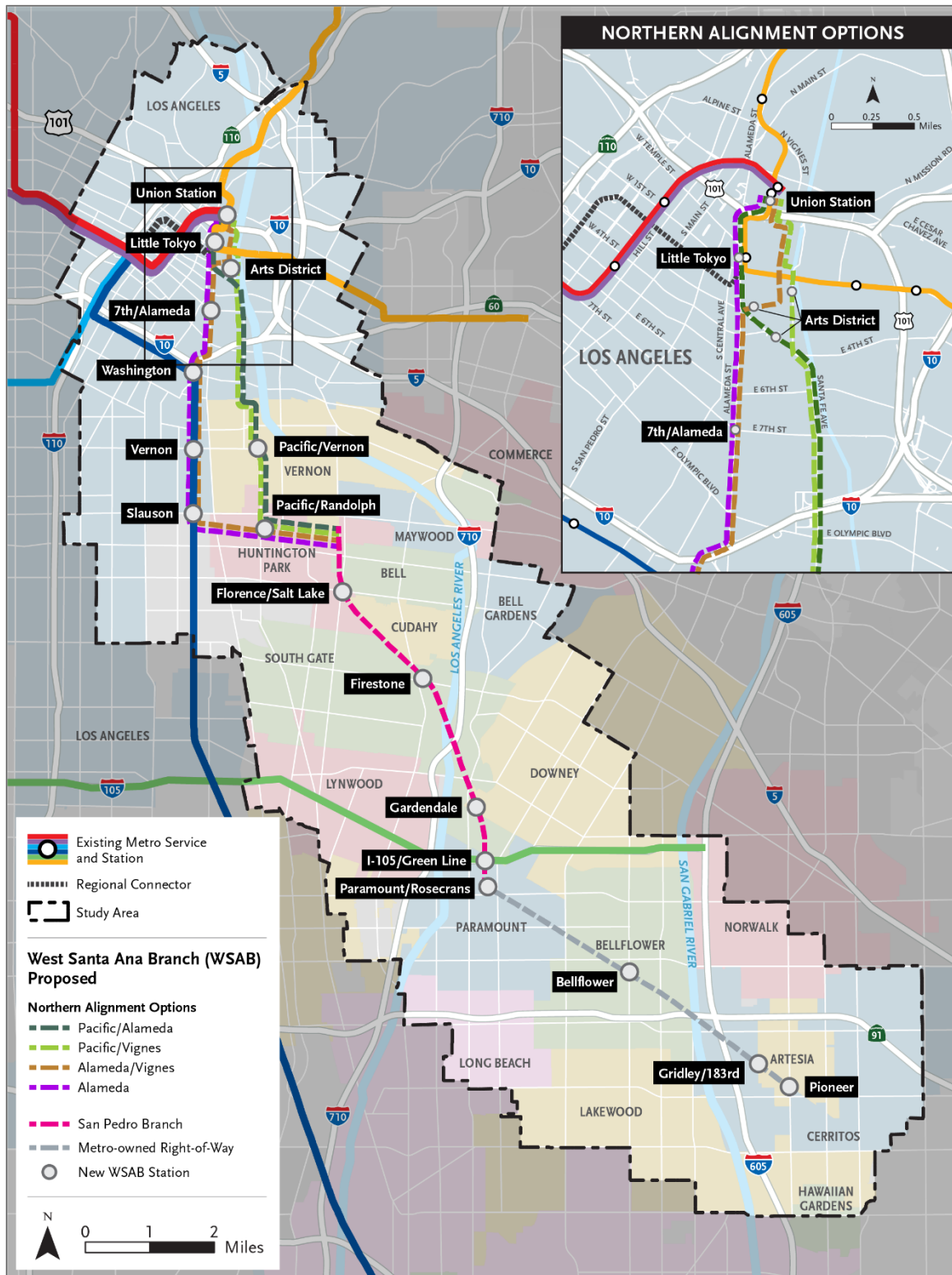
Alignment Option	Length (Northern Terminus to Florence/Salt Lake Station)	Preliminary Proposed Configuration (Northern Terminus to Florence/Salt Lake Station)	# of Proposed Stations (Northern Terminus to Florence/Salt Lake Station)
East Bank	7.7 miles	3.7 miles aerial; 4.0 miles at-grade	3
West Bank 3	6.9 miles	1.9 miles aerial; 3.3 miles at-grade; 1.7 miles underground	4
Pacific/Alameda	7.4 miles	2.7 miles aerial; 3.3 miles at-grade; 1.4 miles underground	5
Pacific/Vignes	7.2 miles	2.4 miles aerial; 3.2 miles at-grade; 1.6 miles underground	4
Alameda	8.0 miles	6.0 miles aerial; 2.0 miles at-grade	7
Alameda/Vignes	8.1 miles	5.5 miles aerial; 1.9 miles at-grade; 0.7 miles underground	7

Source: TRS Report, 2015

<sup>2</sup> Building from the SCAG AA Study, the feasibility of the I-105/Metro Green Line Station was assessed during the TRS, which concluded that siting a station in the I-105 median was feasible and recommended.

<sup>3</sup> The TRS analyzed the potential new terminus at the Pioneer Station in the City of Artesia in lieu of the Bloomfield Station in the City of Cerritos, which was part of the SCAG AA Study. The TRS concluded that the Pioneer Station terminus is feasible and recommended.

Figure ES-3. WSAB Transit Corridor



Source: West Santa Ana Branch Technical Refinement Study (Metro 2015)

Figure ES-4. East Bank Alignment Option



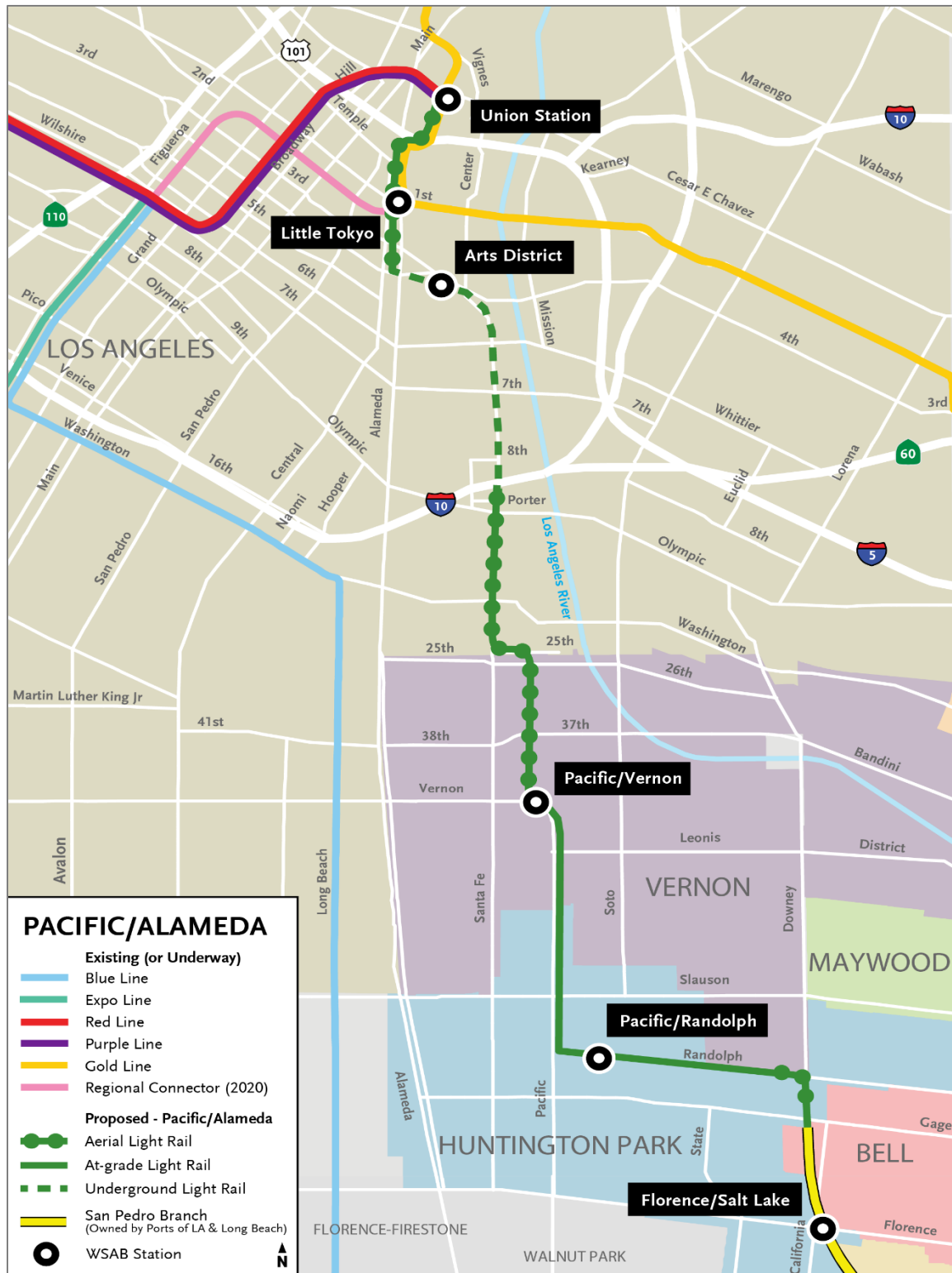
Source: West Santa Ana Branch Technical Refinement Study (Metro 2015)

Figure ES-5. West Bank 3 Alignment Option



Source: West Santa Ana Branch Technical Refinement Study (Metro 2015)

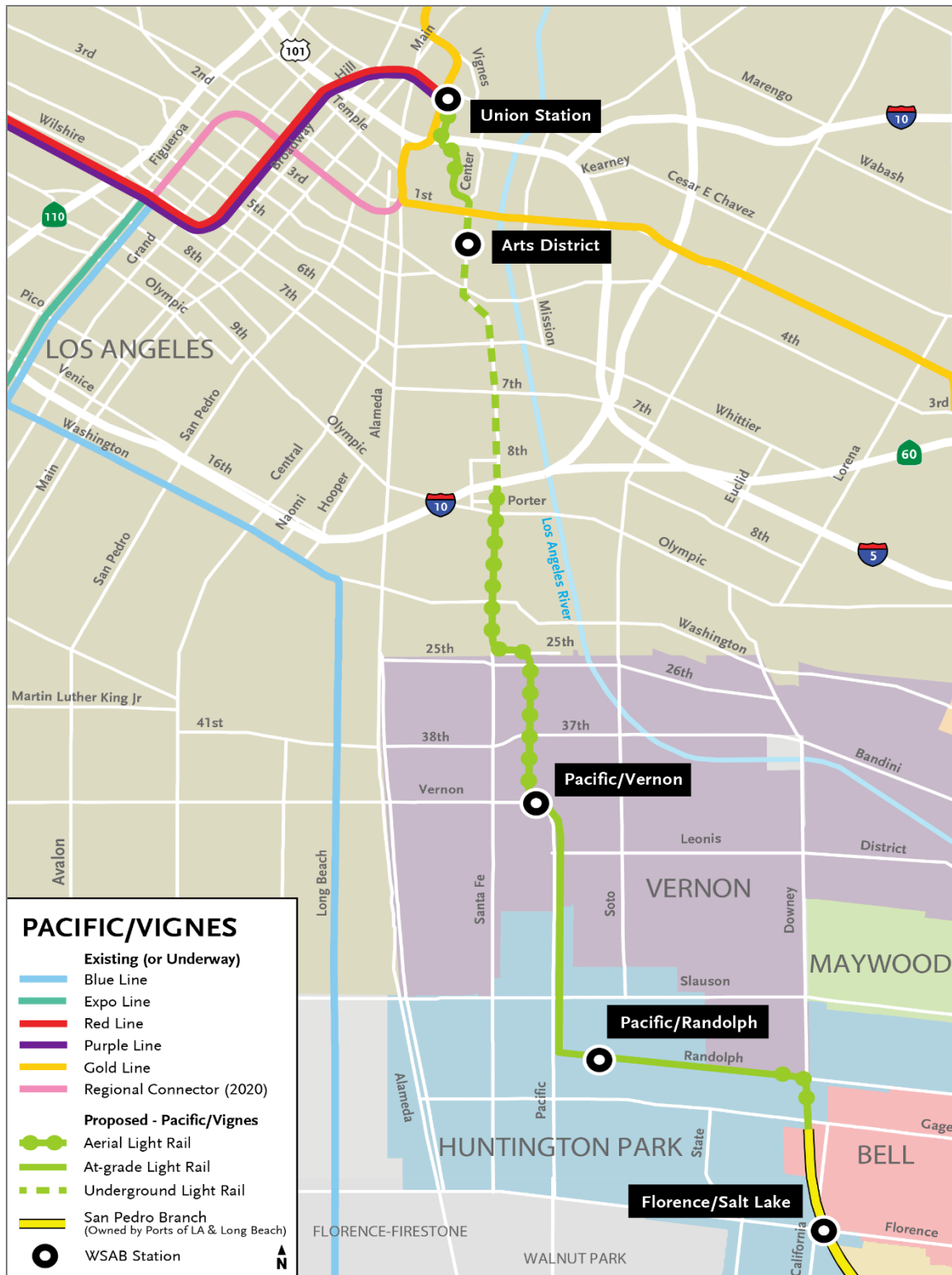
Figure ES-6. Pacific/Alameda Alignment Option



Source: West Santa Ana Branch Technical Refinement Study (Metro 2015)



Figure ES-7. Pacific/Vignes Alignment Option



Source: West Santa Ana Branch Technical Refinement Study (Metro 2015)

Figure ES-8. Alameda Alignment Option



Source: West Santa Ana Branch Technical Refinement Study (Metro 2015)

Figure ES-9. Alameda/Vignes Alignment Option



Source: West Santa Ana Branch Technical Refinement Study (Metro 2015)



## ES.5 Screening Evaluation

The screening evaluation was conducted to determine how well each of the six northern alignment options met the goals and objectives of the Project, as summarized in Table ES-1. The five project goals are as follows:

- Goal 1: Provide Mobility Improvements
- Goal 2: Support Local and Regional Land Use Plans and Policies
- Goal 3: Minimize Environmental Impacts
- Goal 4: Ensure Cost Effectiveness and Financial Feasibility
- Goal 5: Ensure Equity

For each goal, a set of criteria was evaluated and a score was given based on how well the alignment option meets the criteria. The northern alignment options were assessed against each evaluation criterion on their performance in qualitative and quantitative measures. A high, medium, or low rating was assigned based on the alignment option's ability to meet the stated objective. Table ES-3 presents the typical scoring methodology for each criterion.

**Table ES-3. Scoring Methodology**

Score		Description
●	High	A high score indicates the alternative highly supports and satisfies the criterion, or has a low potential for negative impacts.
◐	Medium	A medium score indicates the alternative moderately supports the criterion, or has a moderate potential for negative impacts.
○	Low	Low scores indicates that an alternative does not support or conflicts with the criterion, or has a high potential for negative impacts.

The comparison of northern alignment options presented in the following sections demonstrates the performance of the northern alignment options based on the goals and objectives of the Project. It also highlights the trade-offs among the northern alignment options to develop a recommendation of which alignment option(s) to carry forward into scoping for the environmental analysis.

### Goal 1: Provide Mobility Improvements

Based on the criterion analyzed, the Pacific/Alameda, Pacific/Vignes, and Alameda alignment options would provide the greatest overall mobility improvement benefits (Table ES-4). These northern alignment options connect directly to Union Station and serve high-density residential and employment corridors, resulting in greater user benefits (overall time savings to the passenger) and higher daily boardings (each time a passenger boards a transit vehicle) than the other northern alignment options. These northern alignment options also directly serve numerous existing and planned Metro rail lines and bicycle facilities, which enhances the connectivity of the transit network. Furthermore, the Pacific/Alameda and Pacific/Vignes alignment options provide the greatest relief to overcrowded conditions on the North-South Line (current Metro Blue Line).

The East Bank and Alameda/Vignes alignment options provide overall average mobility improvements. The West Bank 3 alignment option would provide the fewest mobility improvement benefits primarily because this alignment option does not have a direct connection to the regional mobility hub of Union Station. By terminating at Little Tokyo instead of Union Station, this alignment option provides little relief to the overcrowded North-South Line and results in the least amount of user benefits and daily boardings.

**Table ES-4. Goal 1: Provide Mobility Improvements**

Evaluation Criteria	Northern Alignment Options					
	East Bank	West Bank 3	Pacific/ Alameda	Pacific/ Vignes	Alameda	Alameda/ Vignes
Estimated daily hours of user benefits	● 17,240 hours	○ 14,320 hours	● 18,580 hours	● 17,000 hours	◐ 15,380 hours	○ 14,770 hours
Decrease in boardings on North-South Line (current Metro Blue Line)	◐ 5% to 9% relief	○ Less than 5% relief	● Higher than 10% relief	● Higher than 10% relief	◐ 5% to 9% relief	◐ 5% to 9% relief
Number of connections to other Metro Rail Lines	◐ 3 connections	◐ 2 connections	● 4 connections	◐ 3 connections	● 4 connections	● 4 connections
Provides direct access to regional rail	● Yes	○ No	● Yes	● Yes	● Yes	● Yes
Number of daily boardings	◐ 50,760 daily boardings	○ 43,390 daily boardings	◐ 59,660 daily boardings	◐ 52,550 daily boardings	● 75,310 daily boardings	◐ 61,770 daily boardings
Number of new transit trips	● 16,560 new trips	○ 13,450 new trips	● 17,480 new trips	● 16,150 new trips	◐ 14,640 new trips	◐ 14,250 new trips
Number of connections to bicycle facilities	○ 5 connections	○ 3 connections	◐ 6 connections	○ 3 connections	● 10 connections	◐ 7 connections
<b>Overall Rankings and Scores</b>	<b>Medium</b> 4.5	<b>Low</b> 0.5	<b>High</b> 6.0	<b>High</b> 5.0	<b>High</b> 5.5	<b>Medium</b> 4.0

## Goal 2: Support Local and Regional Land Use Plans and Policies

Overall, the Pacific/Alameda, Pacific/Vignes, Alameda, and Alameda/Vignes alignment options provide the greatest compatibility with existing and planned land uses (Table ES-5). The West Bank 3, Pacific/Alameda, and Pacific/Vignes alignment options serve a corridor with high employment density through the City of Vernon, while the Alameda and Alameda/Vignes alignment options would operate along a densely populated corridor bordering southeast Los Angeles. The northern alignment options with stations that serve the core of downtown Los Angeles (Union Station and Little Tokyo) have higher average population and employment densities than the northern alignment options that do not.

These downtown station areas, along with the Arts District Station, are also areas primed for future transit-oriented development (TOD) with policies already in place to encourage mixed-use, high-density development. The proposed stations along the Alameda and Alameda/Vignes alignment options overlap with the existing Metro Blue Line stations, which also have TOD plans and policies already in place to encourage transit-friendly development. The northern alignment options along Pacific Boulevard provide little opportunity for future TOD due to the industrial nature of the corridor. Likewise, the East Bank alignment option passes through primarily industrial areas with limited TOD plans and policies in place. While the West Bank 3 alignment option is similar to the Pacific/Alameda alignment option, it does not connect to Union Station, which is a major planned TOD center. Most of the existing affordable housing units are concentrated along the Alameda and Alameda/Vignes alignment options, as well as in downtown Los Angeles, with an especially high number within a half-mile of the Little Tokyo Station. The northern alignment options that serve more industrial areas have fewer affordable housing units around the station areas.

All of the northern alignment options meet the goals and objectives set forth in adopted plans and policies of the local jurisdictions. However, due to the lack of connection into Union Station or the Metro Blue Line, West Bank 3 only meets the goals set forth in the City of Vernon General Plan.

Table ES-5. Goal 2: Support Local and Regional Land Use Plans and Policies

Evaluation Criteria	Northern Alignment Option					
	East Bank	West Bank 3	Pacific/ Alameda	Pacific/ Vignes	Alameda	Alameda/ Vignes
2040 population densities within ½ mile of stations	● 10,580 persons/square mile	○ 8,880 persons/square mile	● 13,570 persons/square mile	● 12,310 persons/square mile	● 14,140 persons/square mile	● 13,400 persons/square mile
2040 employment densities within ½ mile of stations	● 14,970 jobs/square mile	● 14,830 jobs/square mile	● 15,250 jobs/square mile	● 15,370 jobs/square mile	○ 13,800 jobs/square mile	○ 13,280 jobs/square mile
Plans and policies supporting TOD around stations	○ Stations located in primarily industrial station areas	● One downtown LA station, and stations in commercial and industrial areas	● Three downtown LA stations, and stations in commercial and industrial areas	● Two downtown LA stations, and stations in commercial and industrial areas	● Three downtown LA stations and adopted TOD station areas along the Metro Blue Line	● Three downtown LA stations and adopted TOD station areas along the Metro Blue Line
Number of existing affordable housing units within ½ mile of stations	○ 954 affordable housing units	● 1,713 affordable housing units	● 2,107 affordable housing units	● 1,659 affordable housing units	● 2,825 affordable housing units	● 2,798 affordable housing units
Supported by existing local plans and programs	● Effectively meets local plans	● Moderately meets local plans	● Effectively meets local plans	● Effectively meets local plans	● Effectively meets local plans	● Effectively meets local plans
<b>Overall Rankings and Scores</b>	<b>Low 2.0</b>	<b>Low 2.0</b>	<b>High 5.0</b>	<b>High 4.0</b>	<b>High 4.0</b>	<b>High 4.0</b>

### Goal 3: Minimize Environmental Impacts

The Pacific/Alameda alignment option provides the greatest overall potential to minimize environmental impacts during both construction and operations (Table ES-6). The Pacific/Alameda, Pacific/Vignes, and East Bank alignment options result in the largest reduction in vehicle miles traveled during operation, resulting in improved air quality and other associated health and environmental benefits. With the exception of the East Bank alignment option, all northern alignment options may result in some impacts to the roadway network by either requiring the removal of parking or traffic lanes. These impacts are most likely to occur where the alignment is aerial or transitioning from aerial to underground. While the East Bank alignment option would not affect the roadway network, over a third of the alignment would overlap with active freight routes, which would potentially disrupt service.

**Table ES-6. Goal 3: Minimize Environmental Impacts during Construction and Operation**

Evaluation Criteria	Northern Alignment Options					
	East Bank	West Bank 3	Pacific/ Alameda	Pacific/ Vignes	Alameda	Alameda/ Vignes
Reduction in vehicle miles traveled (VMT)	● 289,960 VMT reduced	○ 162,510 VMT reduced	● 312,150 VMT reduced	● 283,710 VMT reduced	◐ 214,930 VMT reduced	◐ 216,820 VMT reduced
Impacts to roadway lanes, parking, and truck movement	● No removal of parking or traffic lanes and minimal impacts to truck movement	◐ Minimal removal of parking or traffic lanes and minimal impacts to truck movement	◐ Minimal removal of parking or traffic lanes and minimal impacts to truck movement	○ Moderate removal of parking or traffic lanes and minimal impacts to truck movement	◐ Minimal removal of parking or traffic lanes and minimal impacts to truck movement	◐ Minimal removal of parking or traffic lanes and minimal impacts to truck movement
Minimal disruption to existing rail ROW (% of miles overlap with existing rail ROW)	○ 38%	● 11%	● 11%	● 11%	◐ 25%	◐ 25%
<b>Overall Rankings and Scores</b>	<b>Medium 2.0</b>	<b>Low 1.5</b>	<b>High 2.5</b>	<b>Medium 2.0</b>	<b>Low 1.5</b>	<b>Low 1.5</b>

### Goal 4: Ensure Cost Effectiveness and Financial Feasibility

Overall, the Alameda alignment option would be the most cost-effective and poses the smallest risk to cost with the fewest engineering challenges (Table ES-7). In part, this is due to the aerial and at-grade configurations, which reduce costs when compared to the costs for an underground alignment. The East Bank alignment option presents the greatest engineering challenges with the need to address crossing existing LA River bridges, ROW constraints from adjacent established properties and utilities, and securing third-party agreements with Union Pacific Railroad and Metrolink to share the ROW. These engineering challenges result in significant risks, which could decrease the cost-effectiveness of this alignment option even further. In addition, when comparing the northern alignment options that require tunneling, the West Bank 3 alignment option has the highest risk due to the longest length of tunneling required.

**Table ES-7. Goal 4: Ensure Cost Effectiveness and Financial Feasibility**

Evaluation Criteria	Northern Alignment Option					
	East Bank	West Bank 3	Pacific/ Alameda	Pacific/ Vignes	Alameda	Alameda/ Vignes
Capital cost (rough order of magnitude in millions \$2015)	● \$3,796.3 <sup>4</sup>	● \$4,315.5	● \$4,420.5	● \$4,416.2	● \$4,309.4	○ \$4,624.4
Cost/benefit (capital costs per boarding)	● \$75	○ \$99	● \$74	● \$84	● \$59	● \$75
Engineering challenges	○ Extensive potential conflicts with infrastructure and requires numerous third- party approvals	● Risk associated with tunneling	● Risk associated with tunneling	● Risk associated with tunneling	● Minimal risk as entirely aerial or at- grade	● Minimal risk associated with shortest tunneling segment
Number of property acquisitions (initial estimate)	○ Significant ROW constraints	● Sufficient ROW	● Limited ROW	● Limited ROW	● Sufficient ROW	● Sufficient ROW
<b>Overall Rankings and Scores</b>	<b>Low 1.0</b>	<b>Medium 2.0</b>	<b>Medium 2.0</b>	<b>Medium 2.0</b>	<b>High 3.5</b>	<b>Medium 2.5</b>

<sup>4</sup> ROW costs were not factored during the TRS Capital Cost estimates. The substantial length of the East Bank alignment requires obtaining easements or purchasing the ROW.

### Goal 5: Ensure Equity

All of the northern alignment options meet the goal of ensuring equity in the provision of new transit service by serving highly transit-dependent and EJ communities. The proportion of transit-dependent households is slightly higher along the Alameda and Alameda/Vignes alignment options because of the corridor's proximity to southeast Los Angeles. However, these communities are already served by the Metro Blue Line; therefore, the Alameda and Alameda/Vignes alignment options would not provide new service to an underserved community. All station areas surpass the LA County averages of 17 percent of people living below poverty and 57 percent of the population being minorities and therefore would be considered EJ communities.

**Table ES-8. Goal 5: Ensures Equity**

Evaluation Criteria	Northern Alignment Options					
	East Bank	West Bank 3	Pacific/ Alameda	Pacific/ Vignes	Alameda	Alameda/ Vignes
Percentage of transit-dependent persons within ½ mile of stations	☉ 15% to 19%	☉ 15% to 19%	☉ 15% to 19%	☉ 15% to 19%	● Over 20%	● Over 20%
Percentage of station areas that qualify as EJ communities	● 100% of station areas	● 100% of station areas	● 100% of station areas	● 100% of station areas	● 100% of station areas	● 100% of station areas
Provision of new reliable fixed service to underserved communities	● New service	● New service	● New service	● New service	☉ Overlaps with existing Metro Blue Line and existing Metro Gold Line Little Tokyo Station	● Overlaps with existing Metro Blue Line and provides new Arts District Station
<b>Overall Rankings and Scores</b>	<b>High 2.5</b>	<b>High 2.5</b>	<b>High 2.5</b>	<b>High 2.5</b>	<b>High 2.5</b>	<b>High 3.0</b>

## ES.6 Summary and Recommendations

Each of the northern alignment options provides a unique set of benefits that must be considered against the potential costs and challenges. Table ES-9 presents the results for each alignment option considered, and the following bullets summarize the key findings for each alignment option:

- East Bank:** Because of its direct connection into Union Station, the East Bank alignment option provides substantial mobility benefits; however, the stations along this alignment serve predominantly industrial areas with lower population and employment densities and limited opportunities for future TOD. Most importantly, this alignment option presents significant engineering challenges because of the constrained ROW from adjacent established properties and utilities, conflicts with existing infrastructure (such as LA River bridges), and requires securing third-party agreements with rail agencies. Combined, these are likely to result in higher costs.
- West Bank 3:** This alignment option provides limited mobility benefits because of its northern terminus in Little Tokyo instead of Union Station. The lack of connection to Union Station also limits TOD opportunities and connections to a major population and employment center. Furthermore, while the benefits of West Bank 3 are substantially lower than the other northern alignment options, the associated costs and engineering challenges are not significantly lower and thus do not offset the lack of connection into Union Station.
- Pacific/Alameda:** By serving both an Arts District and a Little Tokyo Station, this alignment option provides significant mobility benefits, presents numerous TOD opportunities, and meets the needs of the local communities and stakeholders. By serving Pacific Boulevard, this alignment option introduces new transit service to a currently underserved area while also providing congestion relief along the Metro Blue Line (North-South Line). However, by serving Santa Fe Avenue and Pacific Boulevard, this alignment option provides service to a primarily industrial area rather than enhancing transit service along the Metro Blue Line, which is heavily residential and presents promising TOD opportunities in the future.
- Pacific/Vignes:** The Pacific/Vignes alignment option provides many of the same benefits as the Pacific/Alameda alignment option. However, by not connecting to the Little Tokyo Station, this alignment option misses a key connection to the East-West Line (the future Regional Connector) thereby limiting mobility benefits and a heavily populated area with numerous TOD opportunities. Furthermore, the estimated capital cost is not significantly lower than the Pacific/Alameda alignment option, but the benefits are lower.
- Alameda:** The Alameda alignment option provides connections to the Union Station, Little Tokyo, and Metro Blue Line (North-South Line), resulting in significant mobility benefits. By following the Metro Blue Line, this alignment option serves low-income and densely populated areas that would benefit from additional transit service and helps to address overcrowding on the Metro Blue Line. By avoiding tunneling, this alignment option is also estimated to be one of the lower cost options. However, this alignment option does not minimize environmental impacts as effectively as other alignment options because of a moderate reduction in VMT and an exclusively



aerial alignment, which could result in conflict with existing roadway or rail (Metro Blue Line) networks.

- **Alameda/Vignes:** As with the Alameda alignment option, this alignment option provides new transit service to a transit-dependent community along the Metro Blue Line (North-South Line) and results in substantial mobility benefits. While this alignment option does provide a station in the Arts District with significant potential for future growth, it does not include a station at Little Tokyo, limiting the connection to the East-West Line (the future Regional Connector). This alignment option is also estimated to be the most expensive because of the required tunneling.

**Table ES-9. Summary of Results**

Evaluation Criteria	Northern Alignment Options					
	East Bank	West Bank 3	Pacific/ Alameda	Pacific/ Vignes	Alameda	Alameda/ Vignes
Provide Mobility Improvements	Medium	Low	High	High	High	Medium
Support Local and Regional Land Use Compatibility	Low	Low	High	High	High	High
Minimize Environmental Impacts	Medium	Low	High	Medium	Low	Low
Ensure Cost Effectiveness and Financial Feasibility	Low	Medium	Medium	Medium	High	Medium
Ensure Equity	High	High	High	High	High	High
<b>Overall Rankings</b>	<b>Low</b>	<b>Low</b>	<b>High</b>	<b>High</b>	<b>High</b>	<b>Medium</b>

## ES.7 Recommendations and Next Steps

Based on the results of the northern alignment options screening analysis, it is recommended that the East Bank and West Bank 3 alignment options be dropped from further consideration and the Pacific/Alameda, Pacific/Vignes, Alameda, and Alameda/Vignes alignment options be carried forward into scoping for the environmental analysis. The East Bank and West Bank 3 alignment options were developed during the SCAG AA phase and do not meet the purpose and need of the project as effectively as the Pacific/Alameda, Pacific/Vignes, Alameda, and Alameda/Vignes alignment options.

In particular, the East Bank alignment option serves a primarily industrial area with limited opportunities for future TOD and poses significant engineering challenges that present higher risk and cost. The West Bank 3 alignment option does not connect directly into Union Station, forcing passengers to transfer to reach this major transportation hub, thus limiting the mobility improvements. The Pacific/Alameda and Pacific/Vignes alignment options

follow the general alignment of the West Bank 3, but provide the valuable direct connection to Union Station.

By providing a direct connection into Union Station, the Pacific/Alameda, Pacific/Vignes, Alameda, and Alameda/Vignes alignment options provide a reliable transit service that connects southeastern LA County to the regional transportation network. The Pacific/Alameda, Pacific/Vignes, Alameda, and Alameda/Vignes alignment options increase mobility and connectivity for historically underserved transit-dependent and EJ communities; reduce travel times on local and regional transportation networks; and accommodate substantial future population and employment growth. Therefore, it is recommended that the Pacific/Alameda, Pacific/Vignes, Alameda, and Alameda/Vignes alignment options be carried into scoping for the environmental analysis.

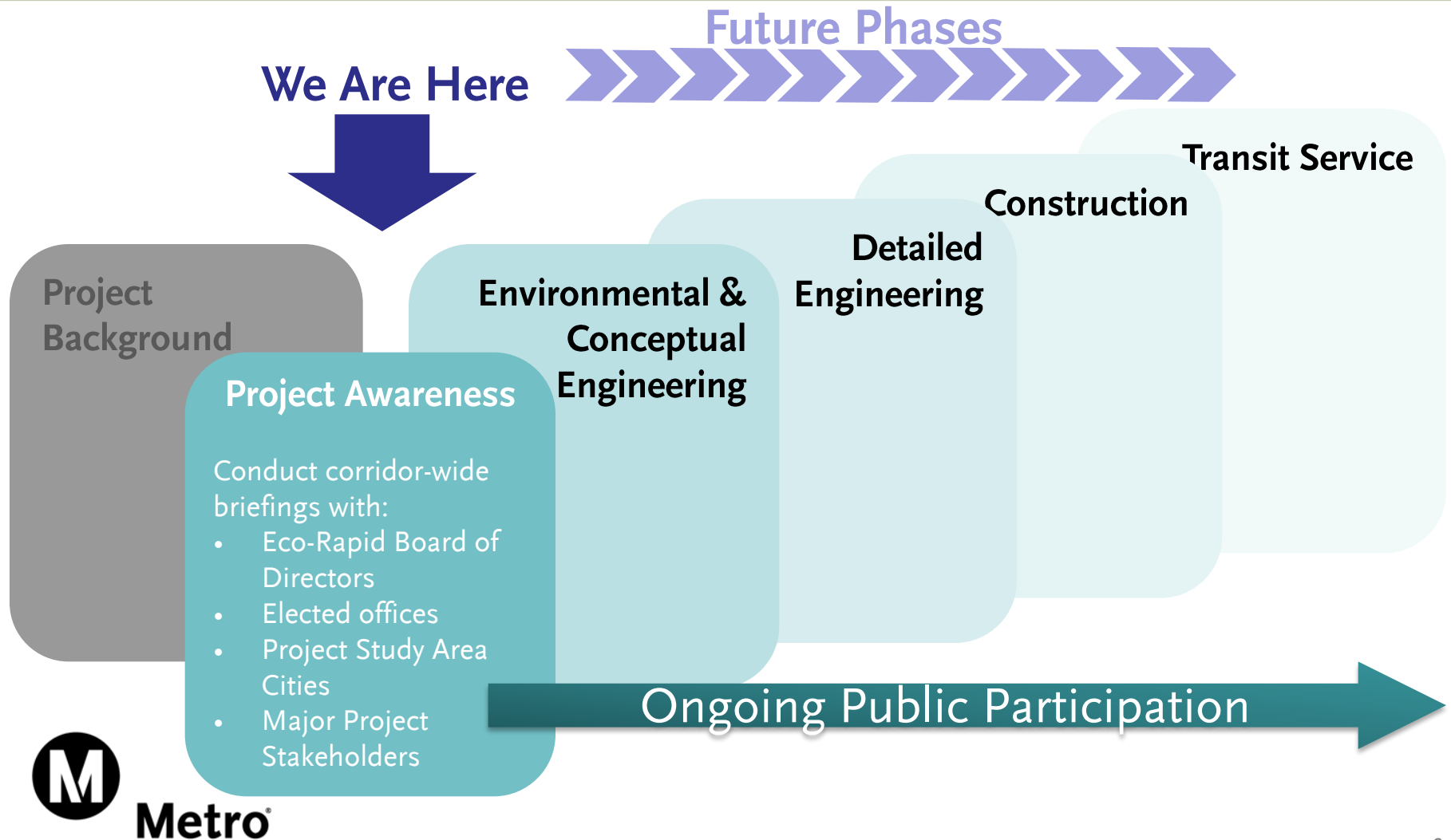


# West Santa Ana Branch Transit Corridor

Planning and Programming Committee – April 19, 2017

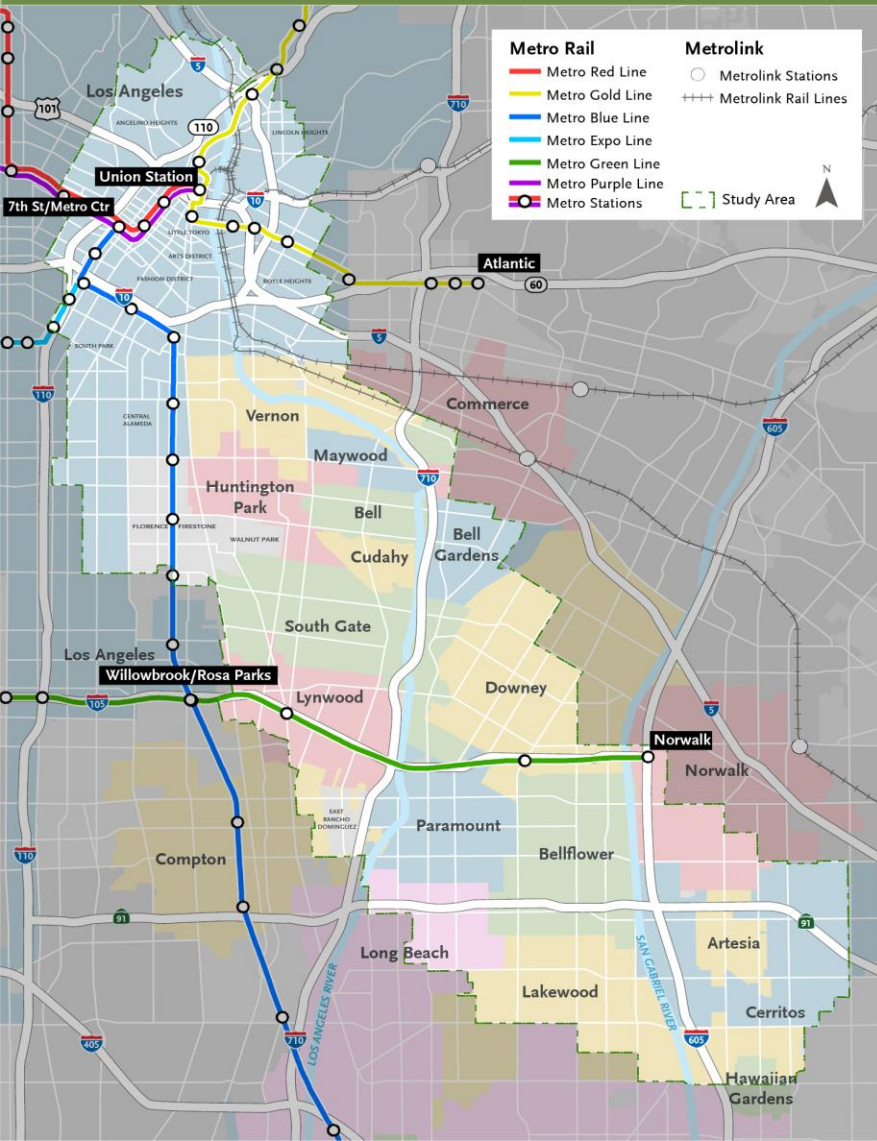


# Project Development Process





# Project Study Area



- 98 square miles
- 20 individual cities plus unincorporated LA County
- 1.2 million people currently reside in the Study Area, with 1.5 million residents projected in 2040
- 584,000 jobs are currently located in the Study Area, 670,000 jobs projected in 2040
- Population and employment densities are five times higher than LA County

# SCAG Alternatives Analysis Recommendations



- Light Rail Transit (LRT)
- Stations identified
- Two northern alternatives:
  - East Bank
  - West Bank 3

# Technical Refinement Study (TRS) Overview



1. Southern Terminus
  - City of Artesia Pioneer Station as new terminus
2. New Green Line Station
  - Constructing station in active freeway and rail line
3. Huntington Park Alignment & Stations
  - Shift alignment from Pacific Blvd. to Santa Fe Ave.
  - Relocate SCAG AA station locations to:
    - Salt Lake Ave./Florence Ave.
    - Randolph St. east of Pacific Blvd.
4. Northern Alignment Options
5. Access to Union Station



# TRS - Northern Alignment Options



- SCAG Alignments:
  - East Bank
  - West Bank 3
- Pacific Blvd. Corridor Options:
  - Pacific/Alameda
  - Pacific/Vignes
- Metro Blue Line/Alameda St. Corridor Options:
  - Alameda
  - Alameda/Vignes

# TRS - Northern Alignment Options Key Findings

	East Bank	West Bank 3	Pacific Blvd Corridor		Metro Blue Line/ Alameda St Corridor	
			Pacific/ Alameda	Pacific/ Vignes	Alameda	Alameda/ Vignes
Number of Stations	11	12	13	12	15	15
Length (miles)	18.5	17.8	18.3	18.1	19	19.1
Travel Time (minutes)	34.4	32.4	33	33.2	33.2	34.3
Estimated Daily Boardings (2040)	50,760	43,390*	59,660	52,550	75,300	61,770
Preliminary Cost Estimate (in billions, 2015\$)	\$3.8	\$4.3	\$4.3	\$4.3	\$4.3	\$4.6

\* Forced Transfers

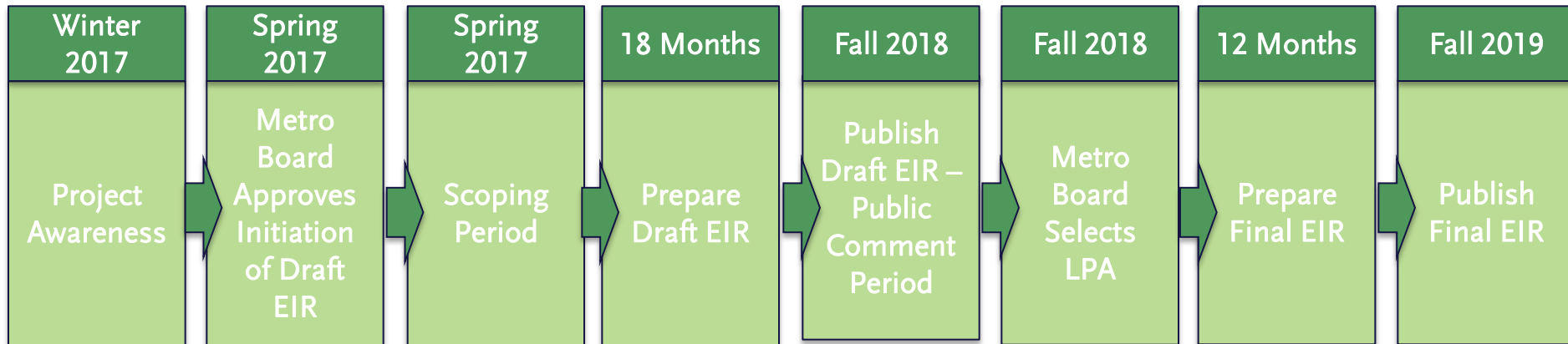
Higher Performing Alternatives

# Project Definition - Four Northern Alignment Options



- Recommend to be carried into Environmental Scoping:
  - Pacific Blvd. Corridor Options:
    - Pacific/Alameda
    - Pacific/Vignes
  - Metro Blue Line/Alameda St. Corridor Options:
    - Alameda
    - Alameda/Vignes

# Environmental Process Timeline



# Public Outreach

- **Public Scoping Comment Period & Meetings (with Live Webcast) - Spring 2017**
- Project Update Community Meetings (2 Rounds)
- City and Elected Briefings
- TAC Meetings
- Community Events / Pop-ups
- Extended Outreach
- **Draft EIR/Public Comment Period & Hearings (with Live Webcast)**

# Next Steps

- May/June 2017, Public Scoping Comment Period & Meetings (with Live Webcast)
- Technical meetings with corridor cities/agencies
- Continuing public outreach

