



Board Report

File #: 2017-0908, File Type: Plan

Agenda Number: 22.

**REVISED
PLANNING AND PROGRAMMING COMMITTEE
FEBRUARY 14, 2018**

**SUBJECT: UNCONSTRAINED PROJECT ADDITIONS AND
REVISIONS TO THE SCAG REGIONAL TRANSPORTATION
PLAN**

ACTION: APPROVE RECOMMENDATION

RECOMMENDATION

CONSIDER:

- A. APPROVING the list of additional and revised financially unconstrained projects (see Attachment A) to submit to the Southern California Association of Governments (SCAG) for inclusion in its Regional Transportation Plan (RTP); and
- B. REQUESTING that SCAG amend the 2016 Regional Transportation Plan (RTP) Strategic Project list to include the project revisions and additions.

ISSUE

Metro has received internal and external requests to add financially unconstrained (not fully funded) projects to the 2016 RTP amendment prepared by SCAG as the Metropolitan Planning Organization (MPO) for the Southern California region. SCAG agreed to an extension to ~~February 28~~ March 8, 2018 for unconstrained project additions and changes to their Strategic Project list, which consists of financially unconstrained projects. If approved, these projects would be added to the SCAG RTP. This action does not amend LA Metro's 2009 Long Range Transportation Plan (LRTP).

DISCUSSION

Background

SCAG is currently compiling the 3rd Amendment to its 2016 RTP. SCAG is forecasting that the 3rd Amendment will be the last amendment prior to the adoption of the 2020 RTP. Metro submitted one financially constrained project update: Orange Line BRT Improvements - Grade Separation changes. The deadline to submit project information was January 9, 2018.

SCAG agreed to a submittal extension to February 28, 2018 for the strategic project additions and changes. The information needed for submission is a project description and some minor details of the project. Federal planning regulations allow the MPO's plan to contain financially unconstrained (unfunded) projects for strategic planning purposes; however such projects are not cleared for federal funding, permitting or other approval actions. Details and costs are not required because strategic projects are not modeled for federal air quality conformity determinations.

Project Requests

Through an RTP amendment process, SCAG looks to Metro to submit project updates even if the project lead agency is not Metro. To that end Metro staff has received requests from partner agencies to add or amend projects to the RTP Strategic Projects list. These requests include:

- Caltrans, in combination with private sector entities, requested modifications to the following existing unconstrained project listings a) Highway efficiency projects along the 101, 134 and 110 freeways; and b) a project clarification for one undefined mobility hub listing to now specify a Mobility Hub at Universal City Metro Red Line Station;
- Metrolink Regional Rail improvements; and
- City of Los Angeles, a 6th Street Heavy Rail Station.

The Regional Rail improvement requests in the attached table are not in the current RTP Strategic Projects list, and Metro Regional Rail staff, in coordination with Metrolink, has requested for their inclusion into the RTP amendment.

Considerations

There are approximately 100 unconstrained Metro projects in SCAG's 2016 RTP. Metro has not submitted new unconstrained projects since the 2009 LRTP. As part of the future update to the LRTP, Metro will update its considerations of strategic projects and related strategic funding initiatives.

DETERMINATION OF SAFETY IMPACT

This Board action will have no adverse impact on safety standards for Metro.

FINANCIAL IMPACT

Approval of this item will have no direct financial impact to Metro..

Impact to Budget

As these projects are not funded, there is no impact to the current fiscal year budget, nor any anticipated impact to future budgets.

ALTERNATIVES CONSIDERED

Staff considered waiting for a future amendment or the formal update to the LRTP to submit strategic

projects, but this would not align with SCAG's amendment schedule.

NEXT STEPS

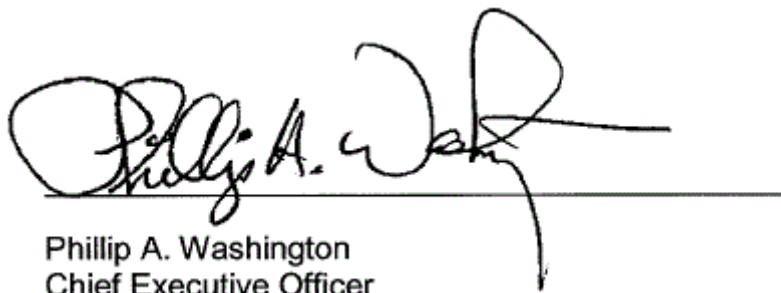
With Board approval, staff will work with SCAG to amend the 2016 RTP to include the unconstrained list of projects, including adjustments for any duplicative entries.

ATTACHMENTS

Attachment A - Unconstrained Project List for RTP Inclusion

Prepared by: Mark Yamarone, Senior Director, Countywide Planning & Development, (213) 922-2834
Kalieh Honish, EO, Countywide Planning & Development, (213) 922-7109
Manjeet Ranu, SEO, Countywide Planning & Development, (213) 418-3157

Reviewed by: Therese W. McMillan, Chief Planning Officer, (213) 922-7077



Phillip A. Washington
Chief Executive Officer

Unconstrained Project List for RTP Inclusion

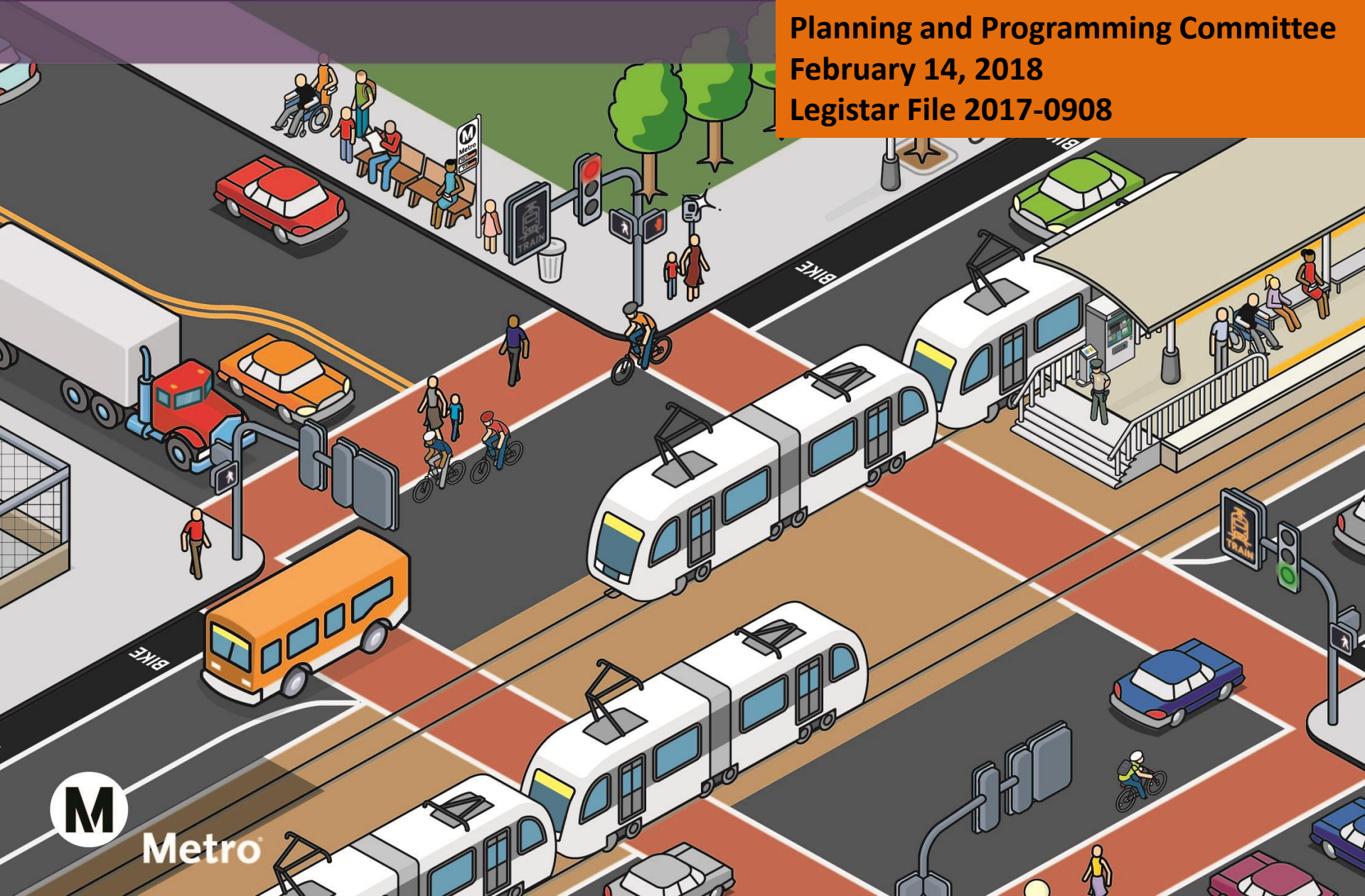
<u>CALTRANS Projects</u>	Location	Project Description	Type
US-101 / SR-134 / SR-170 Interchange Project	US-101 / SR-134 / SR-170	Mobility Triangle Partnership: Improvements to the US-101 / SR-134 / SR-170 interchanges, providing three transition lanes in each direction on the US-101 and SR-134. SR-170 modified to accommodate transition lanes through interchange area.	Highway
US-101 Cahuenga Pass Corridor Improvement Project	US-101	Mobility Triangle Partnership: Correcting and modifying on- and off-ramp alignments, and relieving existing chokepoints by adding auxiliary lanes on the US-101 between Highland Avenue and Lankershim Boulevard. In addition, three bridges will be replaced with wider overcrossings within the project extents.	Highway
SR-134 Corridor Operational Improvement Project	SR-134	Mobility Triangle Partnership: On westbound SR-134, add westbound transition lane from Riverside Drive on-ramp to the Forest Lawn Drive off ramp; Add westbound transition lane from the Forest Lawn Drive on-ramp to the Buena Vista Street off-ramp; Widen westbound Forest Lawn Drive off-ramp.	Highway
Mobility Hub	Universal City / Studio City Metro Red Line Station	Mobility Triangle Partnership: Construct Mobility Hub at the Universal City / Studio City Metro Red Line Station. Install a full-service mobility hub that includes secure bike parking, safe and reliable access to car share, bike share, and ride share services, and safe access to transit.	Transit
SR-110 Operation Improvements	SR-110	Add auxiliary lanes on southbound SR-110 from the Stadium Way off-ramp to the northbound US-101 connector; Add auxiliary lanes on northbound SR-110 from the Figueroa Street on-ramp to the Hill Street onramp. Relocate and replace Sunset Boulevard southbound off-ramp; Upgrade existing and install new traffic signals.	Highway

Unconstrained Project List for RTP Inclusion

<u>Regional Rail Projects</u>	Location	Project Description	Type
Link Union Station	LA Union Station	Accommodation of high speed rail up to 2 platforms and 4 tracks and the West Santa Ana Branch Light Rail. Major rail and passenger improvements including up to 10 run-through tracks, new platforms and canopies, new passenger concourse and vertical circulation systems and the accommodation of high speed rail up to 2 platforms and 4 tracks and the West Santa Ana Branch Light Rail.	Transit
Metrolink Ventura Line Capacity Improvement Projects	Metrolink's Ventura Line between Burbank and the Ventura County Line	Add capacity to the Ventura County Line between Burbank Junction to the Ventura County border to allow frequencies of up to 4 regional rail trains per hour and 1 intercity rail (Pacific Surfliner) train per hour in each direction. This includes the necessary double track sections, track, signal, station, and structure upgrades and rehabilitation, accessibility improvements, and maintenance facility capacity outside of a Regional Rail capital project.	
Metrolink Antelope Valley Line Capacity Improvement Projects	Metrolink's Antelope Valley Line between Union Station and Lancaster	Add capacity to the Antelope Valley Line between Los Angeles Union Station and Lancaster. This project enables 4 trains per hour between Santa Clarita and Union Station and 2 trains per hour between Lancaster and Union Station in each direction. Phase I includes double track sections (Acton, Vista Canyon Station and Siding, CP Lang to CP Canyon, Balboa Siding), Burbank Junction speed improvements, and signal respacing, maintenance facility capacity and a north exit from the CMF. Accommodating greater frequencies requires additional double track segments (e.g., Palmdale to Lancaster, CP Ravenna to	
Metrolink San Bernardino Line Capacity Improvement Projects	Metrolink's San Bernardino Line between Union Station and the San Bernardino County Line	Add capacity to the San Bernardino Line from Union Station to the San Bernardino County border to allow frequencies of up to 2 regional rail trains per hour and 1 express train per hour in each direction. This includes the necessary double track sections, track and structure upgrades and rehabilitation, accessibility improvements, signal improvements, and maintenance facility capacity. Base 30 minute service involves several double track segments (including Marengo Siding) and modifications to the El Monte Station pedestrian circulation.	
Metrolink San Bernardino Subdivision Capacity Improvements	Metrolink San Bernardino Subdivision	BNSF San Bernardino Sub improvements to expand capacity, including Hobart Yard reconfiguration, relocation of Commerce Station, design and construction of 4th main track LA to Fullerton, and reconfiguration of Fullerton Junction to increase capacity LA to Fullerton on the 91-LA line.	
Metrolink Grade Separation Projects: Pioneer Blvd, Norwalk/Los Nietos Rd.	Metrolink Grade Separations	Grade separation projects at Pioneer Blvd., and Norwalk Blvd/Los Nietos Road to improve safety and operational reliability.	
<u>New Project</u>	Location	Project Description	Type
Extend Heavy Rail to Arts District	Arts District / 6th Street	Heavy Rail network extended to new station at Arts District / 6th Street	Transit

Unconstrained Project Additions and Revisions To the SCAG Regional Transportation Plan

Planning and Programming Committee
February 14, 2018
Legistar File 2017-0908



Metro

Metro RTP Amendment Process

- SCAG looks to Metro to submit project additions and updates even if the project lead agency is not Metro
- Metro has received internal and external requests to add or amend financially unconstrained (not fully funded) projects
- Does not amend LA Metro's 2009 Long Range Transportation Plan (LRTP).

Financially Unconstrained “Strategic” Projects

- Federal planning regulations allow the MPO’s plan to contain financially unconstrained (unfunded) projects for strategic planning purposes
- Such projects are not cleared for federal funding, permitting or other approval actions
- Distinct from financially “Constrained” funded projects, which must demonstrate “reasonable” full funding and are part of satisfying federal air quality requirements



RTP Unconstrained Project Updates

- Caltrans in combination with private sector entities requested modifications to the following existing unconstrained project listings:
 - Highway efficiency projects along the 101, 134 and 110 freeways; and
 - A project description clarification for one undefined mobility hub listing to now specify a Mobility Hub at Universal City Metro Red Line Station

RTP Unconstrained Project Updates

- Regional Rail improvements
 - Metrolink – Ventura Line Capacity Improvements
 - Metrolink – Antelope Valley Line Capacity Improvements
 - Metrolink – San Bernardino Line Capacity Improvements
 - Metrolink – San Bernardino Subdivision Improvements
 - Metrolink – Grade Separation Projects
- New Projects
 - Link Union Station (unfunded project components)
 - Extend Heavy Rail to new Arts District/6th Street Station

