



## Board Report

**File #:** 2018-0199, **File Type:** Informational Report

**Agenda Number:** 27.

### SYSTEM SAFETY, SECURITY AND OPERATIONS COMMITTEE MAY 17, 2018

**SUBJECT: PUBLIC ART STATE OF GOOD REPAIR UPDATE**

**ACTION: RECEIVE AND FILE**

#### **RECOMMENDATION**

RECEIVE AND FILE Annual Report on the Phased Art Asset Management Program.

#### **ISSUE**

At its May 2017 meeting, the Board directed staff to initiate a phased approach to Art Asset Management for existing and new lines. This report provides the requested annual report on these activities.

#### **DISCUSSION**

There are currently 168 permanent artworks integrated into the design and infrastructure of operating Metro stations and facilities throughout the Los Angeles County. These artworks were commissioned and developed through a community based process and are an important part of the customer experience. Like other assets in the Metro system, integrated artworks are subject to wear and tear of time and use and require special attention and care to ensure their state of good repair and aesthetic integrity. To address this need, and as outlined in the May 2017 Board adopted action, staff is focusing on the oldest artworks in the system first and is applying lessons learned to new lines.

#### **Blue Line**

Metro initiated art asset management on the 25+ year old Blue Line and prioritized available resources to address the line's backlog of deferred artwork maintenance and repairs, and capital funds have been secured for several refurbishments and replacements. The Blue Line now has a dedicated staff person assigned to art asset management and annual artwork inspections and professional condition assessments of each of the artworks have been completed. Seven artwork repairs have been completed, capital artwork refurbishment projects have been initiated, and regular ongoing care and maintenance is now underway (Attachment B). Consultants, including artists, conservators, fabricators and other specialized technicians, assist with this work to ensure these unique assets achieve and retain a state of good repair moving forward. Metro Art staff is also working closely with Construction on capital improvement projects along the line.

Metro collaborates with artists and community members for the engagement as part of the Blue Line art asset management process. These community partners have been included in discussions

---

regarding art refurbishments, removals and new commissions. Staff recently arranged a special artist-led Blue Line tour for Cal State Dominguez Hills students and is working with UCLA Design Thinking students on potential new ways to provide information on the unique stories behind the artworks along the line. Staff has also met with the Citizens Advisory Council regarding art asset management activities to ensure their involvement and feedback.

### **Red Line**

The next line to be phased into regular ongoing art asset management is the Red Line, which reached a 25-year mark earlier this year. There are a significant number of artworks that are in need of assessment and repair. Additional staff resources to begin to address deferred artwork detailed inspections, condition assessments, and minor repairs are included in the FY19 proposed budget.

### **NEXT STEPS**

Staff will continue to pursue the adopted phased art asset management program and will work to ensure their state of good repair and aesthetic integrity of the systems art assets as resourced. Staff will work cross-departmentally to apply lessons learned and to ensure that professional care and management of artworks is included in future operational plans and will continue to provide an annual report on the phased art asset management program implementation as directed by the Board.

### **ATTACHMENTS**

Attachment A - Annual Report on Phased Art Asset Management

Prepared by: Maya Emsden, Deputy Executive Officer (213) 922-2720

Reviewed by: Pauletta Tonilas, Chief Communications Officer, (213) 922-3777



# Phased Art Asset Management Annual Report

May 2018



Metro

# Metro Public Art Assets

- Growing (and aging) system
- 168 permanent artworks
- Many artworks are now 25+ years old
- Safety, wear and tear impacts
- Facility modification impacts
- Deferred care becoming increasingly visible
- Unique assets require specialized approach



# Blue Line

- Board adopted phased approach initiated
- Annual inspections of artworks completed
- Ongoing care and maintenance underway
- Repairs and refurbishment initiated
- New Blue coordination

## Artesia Station - Before







# Artesia Station - After

Lynn Aldrich  
*Blue Line Oasis*  
1996



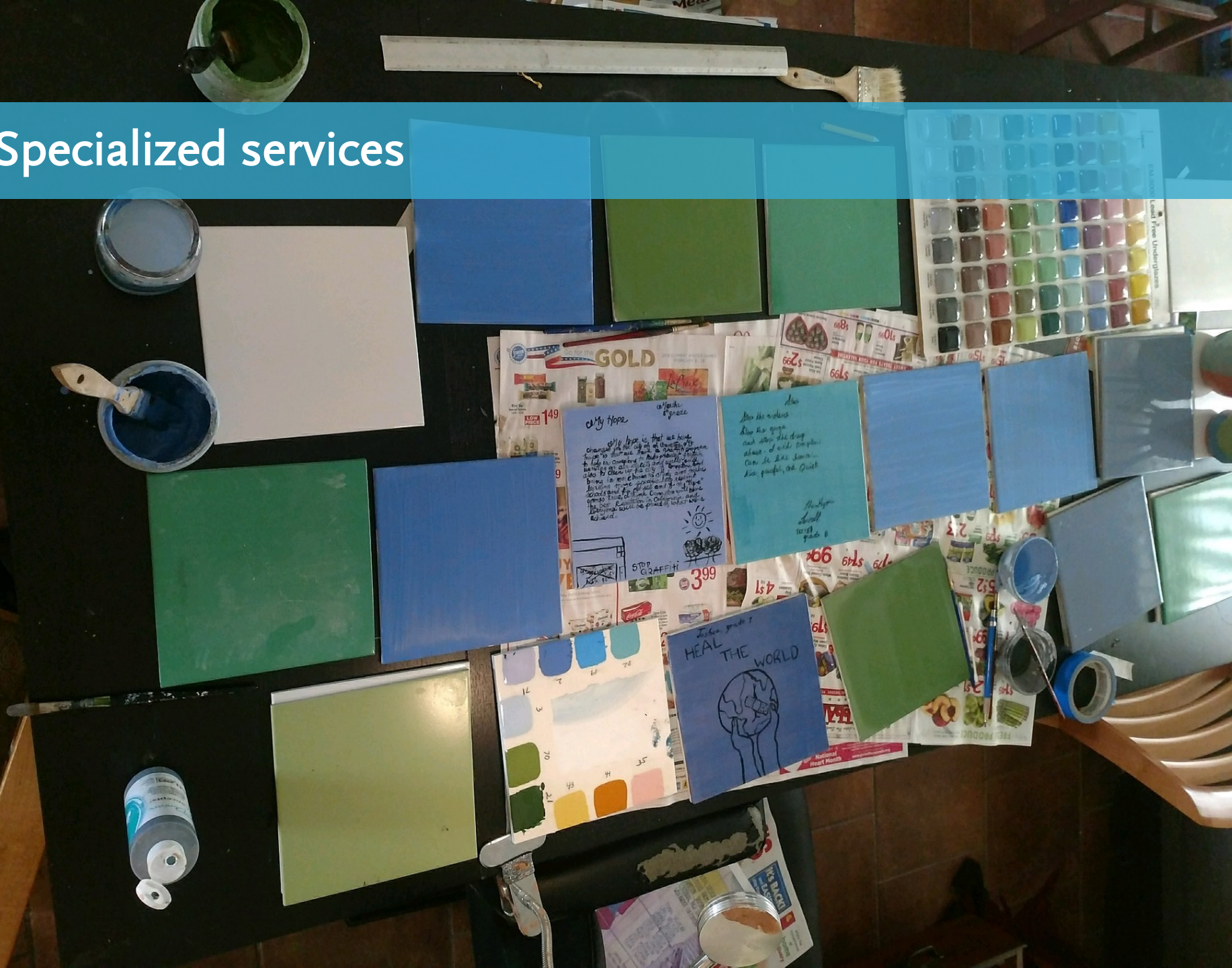
# Wardlow Station – Before and After



Jacqueline Dreager  
*Great Gathering Place*  
1992



# Specialized services





# Refurbishment of artwork onsite



Judy Baca  
*Metate Bench*  
2008



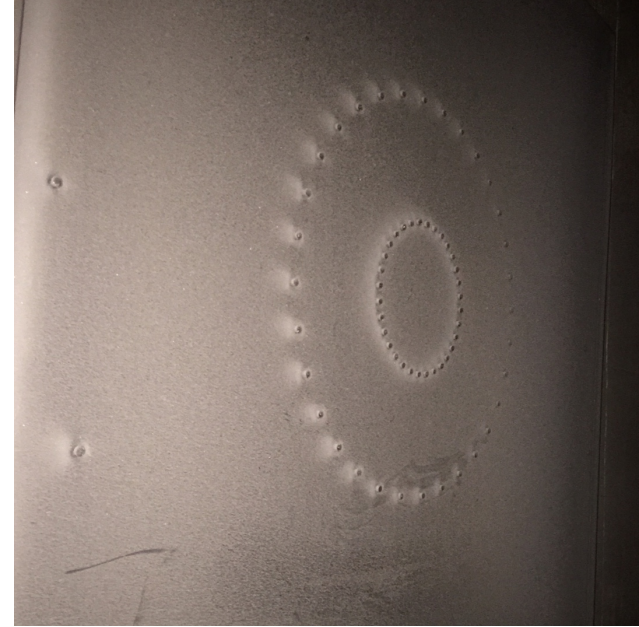
## Refurbishment of artwork offsite



Roberto Salas  
*Blue Line Totems in Red*  
1994



# Tunnel Artwork Refurbishment to begin in FY19



Thomas Eatherton  
*Unity*  
1991



# Willowbrook/Rosa Parks Station Improvement Project





# Community Engagement



# Partnered with UCLA to explore ways to raise awareness

## Public Art "Welcome to Long Beach"

5.0 ★★★★★ (1) · Tourist Attraction

421 W Broadway



## Public Art "Recreations of Long Beach"

5.0 ★★★★★ (1) · Tourist Attraction

252 E 3rd St



## Public Art "Local Odysseys"

4.0 ★★★★★ (1) · Tourist Attraction

Station Platform, 1290 Long Beach Blvd



## Public Art "Failed Ideals"

No reviews · Sculpture

Station Platform, 598 Long Beach Blvd

Open now



## Public Art "We Know Who We Are"

No reviews · Sculpture

Station Platform, 498 Pacific Ave



## Public Art "Twelve Principles"

3.0 ★★★★★ (3) · Art

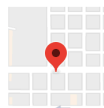
Station Platform, 1798 Long Beach Blvd



## Arts Council For Long Beach

No reviews · Non-Profit Organization

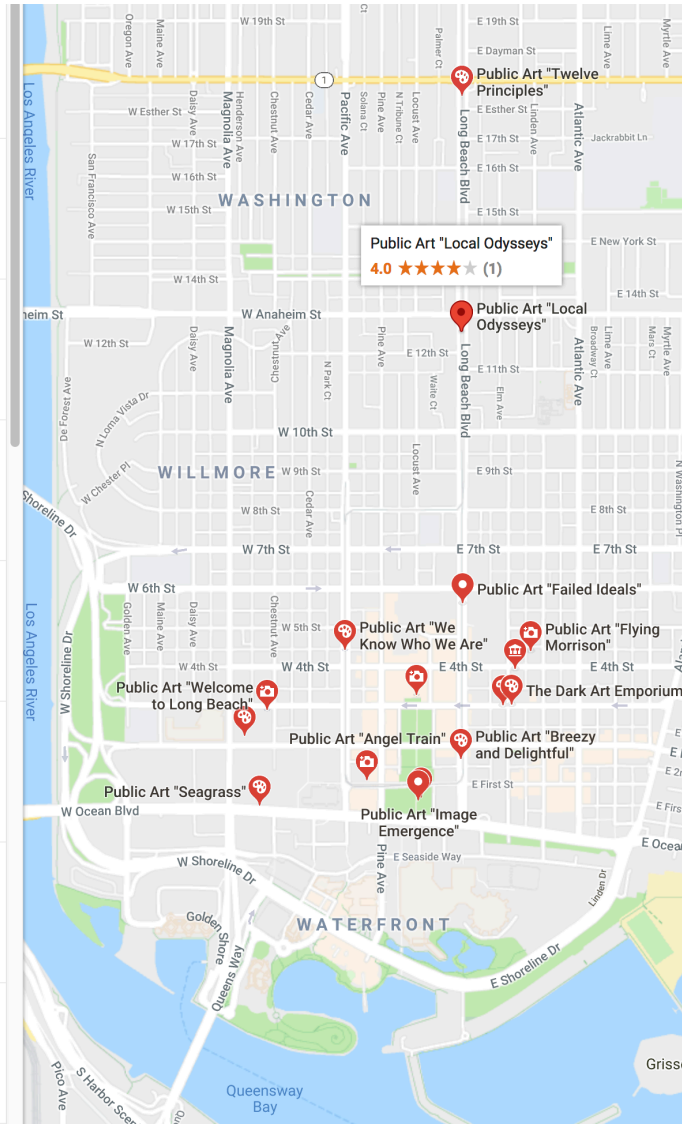
350 Elm Ave



## Public Art "Angel Train"

3.7 ★★★★★ (3) · Tourist Attraction

Station Platform, 128 W 1st St





# Artist led tours



# Red Line

Board directive (May 2017)

“Begin art asset management on the Red Line, including a request for additional staff resources in FY19 to address artwork repairs and refurbishments as well as annual inspections, care, and maintenance for the wide range of artworks along the line.”



# Westlake/MacArthur Park Station – Water Intrusion Impacts



Francisco Letelier  
*El Sol, La Luna*  
1993





# Hollywood/Vine Station - Vandalism/removed



Gilbert "Magu" Lujan  
*Hooray for Hollywood*  
1999



# Wilshire/Vermont Station – Damaged artwork tile



Bob Zoell  
*No Title*  
2004



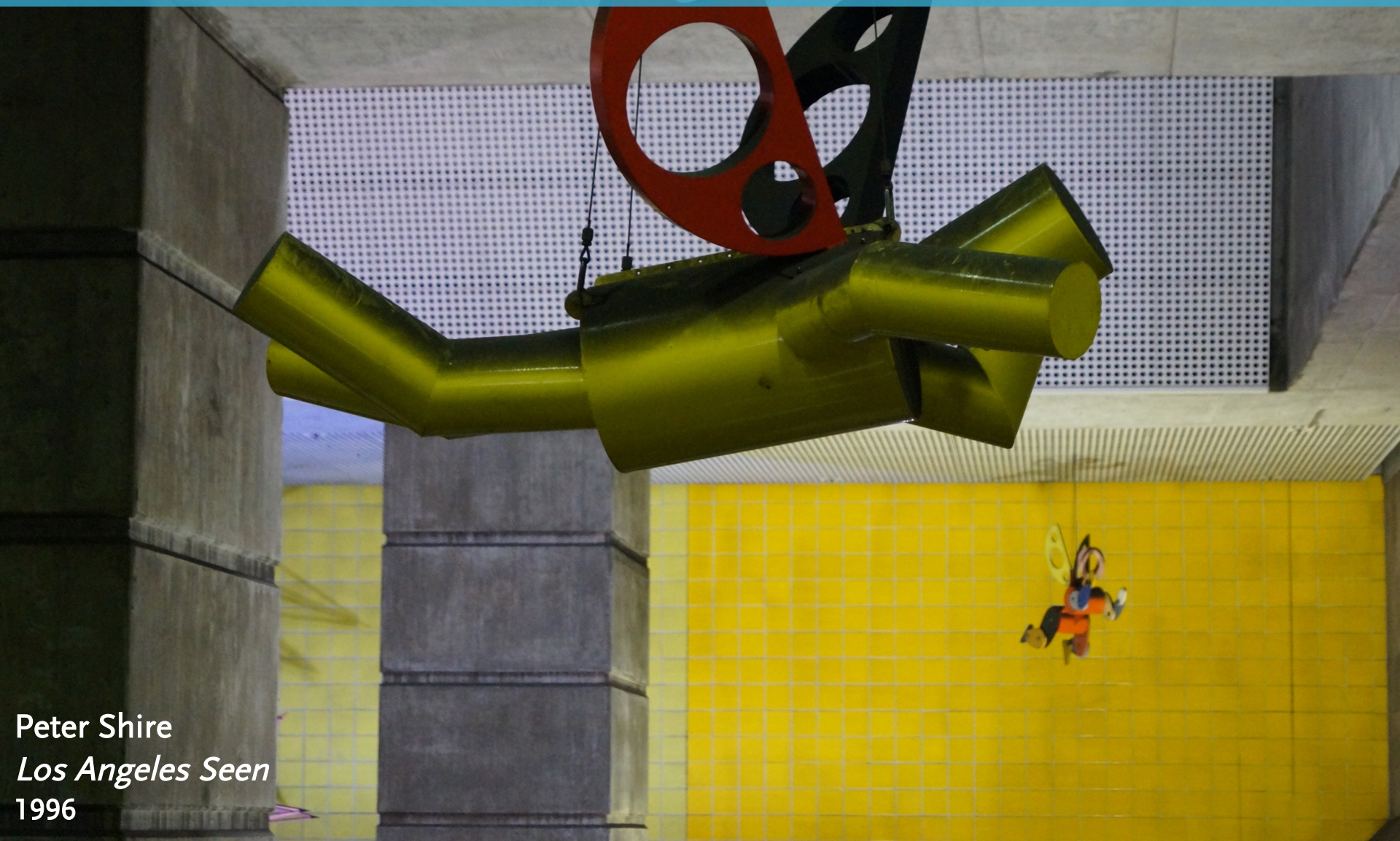
# Hollywood/Highland Station – Artwork not functioning



Sheila Klein  
*Underground Girl*  
2000



# Wilshire/Vermont Station – Artwork requires cleaning



Peter Shire  
*Los Angeles Seen*  
1996





Thank you



Metro

## Metro Art Phased Art Asset Management Program Annual Report

April 13, 2018

Metro Blue Line						
Station	Artist / Artwork Title / Components	Year Installed	Annual Maintenance Requirements	Condition	FY18 Progress	FY19 Action Plan
1 Blue Line Tunnel	Thomas Eatherton  Unity  LED light sculpture installations	1991	Conduct detailed annual artwork inspection and cleaning. Document conditions.	Not functioning as intended. Electronic artwork requires refurbishment of 82 lightworks.	FY18 Capital Budget has been approved to renovate and place non-functioning fiber-optic artwork with new, more efficient LED replacement units. Capital project initiated. Electronic artwork requires refurbishment of 82 lightworks.	Perform annual artwork inspections. Work with original artist and lighting designer to develop appropriate and efficient LED replacement unit design.
2 Wardlow	Jacqueline Dreager  Great Gathering Place  Fiberglass, bronze and steel sculptures; Concrete and steel stools; Glass medallion with imagery	1992	Conduct detailed annual artwork inspection and cleaning. Document conditions. Biennial application of gel-coat and wax at fiberglass and bronze elements. Specialized or minor repairs when needed.	Fiberglass artwork sculptural elements reflect deterioration in keeping with UV exposure and age. Glass artwork requires specialized cleaning. Staff worked with artist to remove portion of artwork in previous years for safety reasons.	Performed annual artwork inspections. Documented artwork and produced detailed condition and corrective action report. Cleaned and re-coated fiberglass and bronze artwork components, implemented minor repairs to two artwork components.	Perform annual artwork inspections. Document artwork and update condition and corrective action report. Clean and apply gel-coat and wax at fiberglass and bronze elements
3 7th Street / Metro Center	Joyce Kozloff  The Movies: Fantasies and Spectacles  Ceramic tile murals	1993	Conduct detailed annual artwork inspection and cleaning. Document conditions. Biennial application of sealant along grout. Specialized or minor repairs when needed.	Low-fire ceramic tile artwork is damaged, reflecting vibration and graffiti etchings.	Performed annual artwork inspections. Documented artwork and produced detailed condition and corrective action report.	Perform annual artwork inspections. Document artwork and update condition and corrective action report. Implement minor repairs, clean and seal grout.
4 7th Street / Metro Center	Roberto Gil de Montes  Heaven to Earth  Ceramic tile murals	1993	Conduct detailed annual artwork inspection and cleaning. Document conditions. Biennial application of sealant along grout. Specialized or minor repairs when needed.	Ceramic artwork tile is damaged, section missing.	Performed annual artwork inspections. Documented artwork and produced detailed condition and corrective action report.	Perform annual artwork inspections. Document artwork and update condition and corrective action report. Implement minor repairs, clean and seal grout.
5 Pico	Robin Brailsford  Time and Presence  Painted steel canopy panels	1993	Conduct detailed annual artwork inspection and cleaning. Document conditions. Biennial application of coatings. Specialized or minor repairs when needed.	Paint at artwork panels has faded.	Performed annual artwork inspections. Documented artwork and produced detailed condition and corrective action report.	Perform annual artwork inspections. Document artwork and update condition and corrective action report. Clean and re-coat panels.
6 San Pedro Street	Sandra Rowe  Hope, Dream, Path, Focus, Belief  Patinated, etched, pigmented waxed bronze panels; stainless steel kinetic sculptures	1993	Conduct detailed annual artwork inspection, documentation and cleaning. Biennial application of sealant. Specialized or minor repairs when needed.	Paint at artwork panels has faded. Kinetic elements are damaged.	Performed annual artwork inspections. Documented artwork and produced detailed condition and corrective action report.	Perform annual artwork inspections. Document artwork and update condition and corrective action report. Clean and re-coat panels, repair kinetic elements.
7 Willowbrook / Rosa Parks	Joe Sam  Hide-n-Seek  Painted steel sculpture	1993	Station undergoing major modification. Working with project team, artist and community advisory group.	Sculptures damaged as result of pigeon nesting, etched, faded and peeling paint. Very difficult/costly to access, clean and maintain. Station scheduled for major modifications; staff working with project team, artist and community advisory group on removal and potential relocation options.	Performed artwork inspection. Working with project team, artist and community advisory group on removal and potential relocation options.	Major station modification project will begin this year. Work will require relocation and/or removal of 3 existing artworks as well as integration of two new artworks. All work done in concert and consultation with project team, artists and community advisory group.

Metro Blue Line						
Station	Artist / Artwork Title / Components	Year Installed	Annual Maintenance Requirements	Condition	FY18 Progress	FY19 Action Plan
8 Grand / LATTC	<p><i>Mark Lere</i></p> <p><i>Who, What, Where?</i></p> <p>Etched and paint filled granite tile paving; etched and paint filled concrete</p>	1994	Working with artist to replace due to impacts of Blue Line refurbishment Project.	Artwork is no longer installed at this station as a result of Blue Line refurbishments.	Working with artist to address State of Good Repair impacts.	Manage Artist contract to fabricate and install replacement artwork. Anticipate completion in 2020.
9 Vernon	<p><i>Horace Washington</i></p> <p><i>A Tribute to Industry</i></p> <p>Bronze and powder coated steel stools; galvanized steel benches; stainless steel and painted steel sculpture; ceramic tile</p>	1994	Conduct detailed annual artwork inspection, documentation and cleaning. Biennial application of sealant. Specialized or minor repairs when needed.	Powder coatings and galvanizing at artwork elements are failing.	Performed annual artwork inspections. Documented artwork and produced detailed condition and corrective action report.	Perform annual artwork inspections. Document artwork and update condition and corrective action report. Remove powder-coated elements, sandblast and re-apply powdercoating finish.
10 103rd Street / Watts Towers	<p><i>Roberto Salas</i></p> <p><i>Blue Line Totems in Red</i></p> <p>Painted steel columns; ceramic tile</p>	1994	Partially removed as a result of Blue Line refurbishment Project.	Original artwork partially removed during Metro Blue Line Refurbishment Project. Working with artist to refurbish and replace artwork.	Engineering and design development completed. Manage Artist contract to fabricate and install replacement artwork.	Manage Artist contract to fabricate and install replacement artwork. Anticipated completion 2020.
11 Pacific Coast Highway	<p><i>Joe Lewis</i></p> <p><i>Twelve Principals</i></p> <p>Ceramic tile medallions</p>	1994	Conduct detailed annual artwork inspection and cleaning. Document conditions. Biennial application of sealant along grout. Specialized or minor repairs when needed.	Artwork medallions require cleaning.	Performed annual artwork inspections. Documented artwork and produced detailed condition and corrective action report.	Perform annual artwork inspections. Document artwork and update condition and corrective action report. Implement minor repairs, clean and seal grout.
12 Anaheim Street	<p><i>Terry Braunstein</i></p> <p><i>Local Odysseys</i></p> <p>Porcelain enamel medallions</p>	1994	Conduct detailed annual artwork inspection and cleaning. Document conditions. Specialized or minor repairs when needed.	Artwork medallions require cleaning.	Performed annual artwork inspections. Documented artwork and produced detailed condition and corrective action report.	Perform annual artwork inspections. Document artwork and update condition and corrective action report. Implement minor repairs, clean and seal grout.
13 Slauson	<p><i>East Los Streetscapers</i></p> <p><i>South Central Suite</i></p> <p>Porcelain enamel panels; ceramic tile and pigmented concrete and ceramic tile murals</p>	1995	Conduct detailed annual artwork inspection and cleaning. Document conditions. Biennial application of sealant along grout. Specialized or minor repairs when needed.	Porcelain enamel panels require re-installation upon completion of repairs. Repairs currently underway as two porcelain enamel panels are to be refabricated. Ceramic tile artwork requires monitoring for future graffiti.	Performed annual artwork inspections. Documented artwork and produced detailed condition and corrective action report. Implemented repairs at ceramic tile, cleaned and sealed grout. Currently working to implement significant repairs and replace attachment system at all porcelain enamel panels before re-installation.	Perform annual artwork inspections. Document artwork and update condition and corrective action report. Work with original artist to reproduce two missing porcelain enamel panels.
14 Compton	<p><i>Eva Cockcroft</i></p> <p><i>Past, Present and Future</i></p> <p>Ceramic tile panels; ceramic tile columns</p>	1995	Conduct detailed annual artwork inspection and cleaning. Document conditions. Biennial application of sealant along grout. Specialized or minor repairs when needed.	Ceramic tile artwork should be monitored for graffiti and further surface loss of low-fire glaze.	Performed annual artwork inspections. Documented artwork and produced detailed condition and corrective action report. Implemented significant specialized repairs throughout, cleaned and sealed grout.	Perform annual artwork inspections. Document artwork and update condition and corrective action report.



Metro Blue Line						
Station	Artist / Artwork Title / Components	Year Installed	Annual Maintenance Requirements	Condition	FY18 Progress	FY19 Action Plan
5th Street	Jim Isermann  <i>Failed Ideals</i>  Stain glass medallions	1995	Partially removed as a result of Blue Line refurbishment Project.	Original artwork paritally removed during Metro Blue Line Refurbishment Project. Working with artist to refurbish and replace artwork.	Engineering and design development completed. Manage artist contract to refurbish, refabricate and reinstall artwork.	Initiate design development and engineering of artwork relocation. Confirm integration of original artwork at new location with Metro Engineering and Construction. Work closely with the original artist throughout scope. Anticipate completion 2021.
1st Street	Paul Tzanetopoulos  <i>Breezy and Delightful</i>  Porcelain enamel kinetic medallions	1995	Conduct detailed annual artwork inspection, documentation and cleaning. Biennial application of coatings and sealant. Specialized or minor repairs when needed.	Artwork medallions require cleaning. Kinetic elements are damaged.	Performed annual artwork inspections. Documented artwork and produced detailed condition and corrective action report.	Perform annual artwork inspections. Document artwork and update condition and corrective action report. Clean medallions panels and replace kinetic elements.
Downtown Long Beach	Patrick Mohr  <i>Angel Train</i>  Anodized aluminum sculptures	1995	Conduct detailed annual artwork inspection and cleaning. Document conditions. Biennial application of sealant and wax. Specialized or minor repairs when needed.	Artwork requires cleaning and application of wax sealant.	Performed annual artwork inspections. Documented artwork and produced detailed condition and corrective action report.	Perform annual artwork inspections. Document artwork and update condition and corrective action report. Clean and apply sealant and wax.
Pacific Ave	June Edmonds  <i>We Know Who We Are</i>  Glass mosaic medallions	1995	Conduct detailed annual artwork inspection and cleaning. Document conditions. Biennial application of sealant along grout. Specialized or minor repairs when needed.	Artwork medallions require cleaning.	Performed annual artwork inspections. Documented artwork and produced detailed condition and corrective action report.	Perform annual artwork inspections. Document artwork and update condition and corrective action report. Clean and apply sealant to grout.
Artesia	Lynn Aldrich  <i>Blue Line Oasis</i>  Stainless steel and ceramic sculpture; glass mosaic tile, painted steel wishing well; glass mosaic panels	1996	Conduct detailed annual artwork inspection and cleaning. Document conditions. Biennial application of sealant along grout. Specialized or minor repairs when needed.	Ceramic tile artwork should be monitored for graffiti and further surface loss of low-fire glaze.	Performed annual artwork inspections. Documented artwork and produced detailed condition and corrective action report. Implemented significant repairs at glass mosaic elements, reproduce and install ceramic tile for kiosk, clean and apply sealant to grout.	Perform annual artwork inspections. Document artwork and update condition and corrective action report.
Washington	Elliot Pinkney  <i>Running for the Blue Line</i>  Painted steel panels; painted columns	1997	Conduct detailed annual artwork inspection and cleaning. Document conditions. Biennial application of coatings. Specialized or minor repairs when needed.	Paint has failed at artwork panels. Painted artwork columns throughout station require repainting.	Performed annual artwork inspections. Documented artwork and produced detailed condition and corrective action report.	Perform annual artwork inspections. Document artwork and update condition and corrective action report. Repaint artwork columns throughout station in keeping with artist's original design.
Del Amo	Colin Gray  <i>Del Amo Wheel</i>  Glass fiber reinforced concrete sculpture	1999	Conduct detailed annual artwork inspection, documentation and cleaning. Biennial application of coatings and sealant. Specialized or minor repairs when needed.	Glass fiber reinforced concrete wheel has been restored in keeping with original conditions. Monitor for future graffiti.	Performed annual artwork inspections. Documented artwork and produced detailed condition and corrective action report. Implemented significant repairs at glass fiber reinforced concrete sculpture, cleaned and applied sealant and grout.	Perform annual artwork inspections. Document artwork and update condition and corrective action report.

Metro Blue Line						
Station	Artist / Artwork Title / Components	Year Installed	Annual Maintenance Requirements	Condition	FY18 Progress	FY19 Action Plan
7th Street / Metro Center	Rotating Artist  <i>Rotating Photo Installations</i>  Anodized aluminum, plexiglass, duratrans film	2001	Conduct detailed annual artwork inspection, documentation and cleaning. Annual cleaning and replacement of bulbs at the time of artwork rotation.	Electronic components are outdated and not functioning as intended. Artwork is in need of detailed artwork inspection, specialized cleaning and housing replacement.	Performed annual artwork inspections. Documented artwork and produced detailed condition and corrective action report.	Perform annual artwork inspections. Document artwork and update condition and corrective action report. Replace lighting housings.
7th Street / Metro Center	K. Kobayashi, N. Korten & M. Perlas  <i>Plantings</i>  Pigmented concrete benches; cast aluminum, painted steel, gobos and electrical components	2002	Conduct detailed annual artwork inspection and cleaning. Document conditions. Specialized cleaning of gobos and electrical components, replacement of lighting. Biennial application of sealant. Minor repairs when needed.	All projection units are broken. Electrical is outdated and not functioning as intended. Expo Rail Line impacts altered artwork location.	Performed annual artwork inspections. Documented artwork and produced detailed condition and corrective action report.	Perform annual artwork inspections. Document artwork and update condition and corrective action report. Implement replacement of electronic components, minor repairs and full cleaning.
Willowbrook / Rosa Parks	<i>Michael Massenburg, Robin Strayhorn</i>  <i>Pathways To Freedom</i>  Glass mosaic, ceramic tile and concrete benches	2002	Conduct detailed annual artwork inspection and cleaning. Document conditions. Biennial application of sealant along grout. Specialized or minor repairs when needed.	Benches are in good condition. Monitor for future graffiti. Station undergoing major modification. Working with project team, artist and community advisory group.	Performed annual artwork inspections. Documented artwork and produced detailed condition and corrective action report. Implemented repairs, cleaned and applied sealant.	Major station modification will begin this year including relocation and/or removal of existing artworks as well as integration of new artworks. All work will be in concert/consultation with project team, artists and community input.
Firestone	Ricardo Mendoza  <i>The Will to Progress</i>  Ceramic tile mural panels	2004	Conduct detailed annual artwork inspection and cleaning. Document conditions. Biennial application of sealant along grout. Specialized or minor repairs when needed.	Ceramic artwork tile is damaged.	Performed annual artwork inspections. Documented artwork and produced detailed condition and corrective action report.	Perform annual artwork inspections. Document artwork and update condition and corrective action report. Implement repairs to tile, clean and seal grout.
Florence	Ricardo Duffy  <i>A Florence Moment</i>  Ceramic tile murals	2005	Conduct detailed annual artwork inspection and cleaning. Document conditions. Biennial application of sealant along grout. Specialized or minor repairs when needed.	Repairs are currently underway at ceramic artwork tile.	Performed annual artwork inspections. Documented artwork and produced detailed condition and corrective action report. Repairs currently underway.	Perform annual artwork inspections. Document artwork and update condition and corrective action report.
Willow	Merge Conceptual Design  <i>Out of Sight</i>  Glass canopy with laminated imagery, GFRC bench	2006	Conduct detailed annual artwork inspection, documentation and cleaning. Biennial application of sealant. Specialized or minor repairs when needed.	Bench is graffitied, canopy requires cleaning.	Performed annual artwork inspections. Documented artwork and produced detailed condition and corrective action report.	Perform annual artwork inspections. Document artwork and update condition and corrective action report. Implement minor repairs, clean and seal bench.
Willowbrook / Rosa Parks	Judy Baca  <i>Metate Bench</i>  GFRC benches with ceramic tile	2008	Conduct detailed annual artwork inspection, documentation and cleaning. Biennial application of sealant. Specialized or minor repairs when needed.	Benches require topping coat and ceramic tile replacement.	Performed annual artwork inspections. Documented artwork and produced detailed condition and corrective action report.	Major station modification will begin this year including relocation and/or removal of existing artworks as well as integration of new artworks. All work will be in concert/consultation with project team, artists and community input.

Metro Red Line						
Station	Artist / Artwork Title / Components	Year Installed	Annual Maintenance Requirements	Condition	FY19 Action Plan	
Union Station	Christopher Sproat  <i>Union Chairs</i>  Granite benches	1993	Conduct detailed annual artwork inspection and develop condition report. Document conditions and develop Maintenance Requirements. Specialized or minor repairs when needed.	Graffiti damage. Lighting components are not functioning as intended. Artwork is in need of detailed artwork inspection, specialized cleaning and lighting replacement.	Perform first detailed annual artwork inspection and document. Develop a condition and corrective action report, and manage implementation of specialized cleaning, repairs and conservation as resourced.	
Union Station	Terry Schoonhoven  <i>Traveler</i>  Ceramic tile mural	1993	Conduct detailed annual artwork inspection, documentation and cleaning. Biennial application of coatings and sealant. Specialized or minor repairs when needed.	Artwork is in need of detailed artwork inspection, specialized cleaning and lighting replacement.	Perform first detailed annual artwork inspection and document. Develop a condition and corrective action report, and manage implementation of specialized cleaning, repairs and conservation as resourced.	
Union Station	Cynthia Carlson  <i>LA: City of Angels</i>  Hand painted mural with reliefs	1993	Conduct detailed annual artwork inspection and cleaning. Document conditions. Biennial application of gel-coat and wax at fiberglass and bronze elements. Specialized or minor repairs when needed.	Artwork is in need of detailed artwork inspection, specialized cleaning and lighting replacement.	Perform first detailed annual artwork inspection and document. Develop a condition and corrective action report, and manage implementation of specialized cleaning, repairs and conservation as resourced.	
Civic Center / Grand Park	Johnathan Borofsky  <i>I Dreamed I Could Fly</i>  Hand painted fiberglass sculpture; audio playback system; spotlights	1993	Conduct detailed annual artwork inspection, documentation and cleaning. Biennial application of coatings and software update at audio component. Specialized or minor repairs when needed.	Artwork is in need of detailed artwork inspection, specialized cleaning and lighting replacement. Audio component requires software update.	Perform first detailed annual artwork inspection and document. Develop a condition and corrective action report, and manage implementation of specialized cleaning, repairs and conservation as resourced.	
Pershing Square	Stephen Antonakos  <i>Neons for Pershing Square</i>  Neon sculptures	1993	Conduct detailed annual artwork inspection, documentation and cleaning. Biennial replacement of Neon Transformers. Specialized or minor repairs when needed.	One neon component is broken. Artwork is in need of detailed artwork inspection, neon repairs, transformer replacement and specialized cleaning.	Perform first detailed annual artwork inspection and document. Develop a condition and corrective action report, and manage implementation of specialized cleaning, repairs and conservation as resourced.	
Westlake / MacArthur Park	Francisco Letelier  <i>El Sol/La Luna</i>  Ceramic tile murals	1993	Conduct detailed annual artwork inspection, documentation and cleaning. Biennial application of coatings and sealant. Specialized or minor repairs when needed.	Water intrusion at station at walls impacting Artwork mural. Artwork is in need of detailed artwork inspection, specialized cleaning and lighting replacement.	Perform first detailed annual artwork inspection and document. Develop a condition and corrective action report, and manage implementation of specialized cleaning, repairs and conservation as resourced.	
Westlake / MacArthur Park	Therman Statom  <i>Into the Light</i>  Glass skylight; acrylic, aluminum, stainless steel and painted steel sculptures; ceramic tile	1993	Conduct detailed annual artwork inspection, documentation and cleaning. Biennial replacement of lighting. Specialized or minor repairs when needed.	Artwork is in need of detailed artwork inspection, specialized cleaning and lighting replacement.	Perform first detailed annual artwork inspection and document. Develop a condition and corrective action report, and manage implementation of specialized cleaning, repairs and conservation as resourced.	
Vermont / Santa Monica	Robert Millar  <i>Untitled</i>  Text painted on walls throughout; aluminum and polycarbonate panels; colored lighting	1993	Conduct detailed annual artwork inspection, documentation and cleaning. Biennial application of coatings and sealant. Specialized or minor repairs when needed.	Lighting component (entrance lighting) is outdated and requires complete renovation. Artwork is in need of detailed artwork inspection, specialized cleaning and lighting replacement.	Perform first detailed annual artwork inspection and document. Develop a condition and corrective action report, and manage implementation of specialized cleaning, repairs and conservation as resourced.	

Metro Red Line					
Station	Artist / Artwork Title / Components	Year Installed	Annual Maintenance Requirements	Condition	FY19 Action Plan
Wilshire / Vermont	Peter Shire  <i>Los Angeles Seen</i>  Painted steel and stainless steel sculptures	1996	Conduct detailed annual artwork inspection, documentation and cleaning. Biennial application of coatings and sealant. Specialized or minor repairs when needed.	Kinetic motorized component not working. Artwork is in need of detailed artwork inspection, specialized cleaning and lighting replacement.	Perform first detailed annual artwork inspection and document. Develop a condition and corrective action report, and manage implementation of specialized cleaning, repairs and conservation as resourced.
Vermont / Beverly	George Stone  <i>Untitled</i>  Glass fiber reinforced concrete sculptural rock formations	1999	Conduct detailed annual artwork inspection, documentation and cleaning. Biennial application of coatings and sealant. Specialized or minor repairs when needed.	Graffiti damage. Artwork is in need of detailed artwork inspection, specialized cleaning, sealant and lighting replacement.	Perform first detailed annual artwork inspection and document. Develop a condition and corrective action report, and manage implementation of specialized cleaning, repairs and conservation as resourced.
Vermont / Sunset	Michael Davis  <i>Ecliptic/Illume</i>  Porcelain, stainless steel, illumination	1999	Conduct detailed annual artwork inspection, documentation and cleaning. Biennial application of coatings and sealant. Specialized or minor repairs when needed.	Graffiti damage. Lighting components are not functioning as intended. Artwork is in need of detailed artwork inspection, specialized cleaning and lighting replacement.	Perform first detailed annual artwork inspection and document. Develop a condition and corrective action report, and manage implementation of specialized cleaning, repairs and conservation as resourced.
Hollywood / Western	May Sun  <i>Untitled</i>  Painted aluminum and polycarbonate sculptures; lighting; terrazzo and copper paving murals; etched granite; patinated bronze; ceramic tile throughout	1999	Conduct detailed annual artwork inspection, documentation and cleaning. Biennial replacement of lighting and application of coatings and sealant. Specialized or minor repairs when needed.	Graffiti damage. Lighting components are not functioning as intended. Artwork is in need of detailed artwork inspection, specialized cleaning and lighting replacement.	Perform first detailed annual artwork inspection and document. Develop a condition and corrective action report, and manage implementation of specialized cleaning, repairs and conservation as resourced.
Hollywood / Vine	Gilbert "Magu" Lujan  <i>Hooray for Hollywood</i>  Painted fiberglass and pigmented concrete benches, hand painted ceramic tiles	1999	Conduct detailed annual artwork inspection, documentation and cleaning. Biennial replacement of lighting and application of coatings and sealant. Specialized or minor repairs when needed.	All platform sculptural elements damaged and removed. Ceramic tile artworks located throughout are in need of detailed artwork inspection, specialized cleaning and sealant.	Perform first detailed annual artwork inspection and document. Develop a condition and corrective action report, and manage implementation of specialized cleaning, repairs and conservation as resourced.
Hollywood / Highland	Sheila Klein  <i>Underground Girl</i>  Painted aluminum fixtures, electrical; aluminum and stainless sculpture	2000	Conduct detailed annual artwork inspection, documentation and cleaning. Biennial replacement of lighting and application of coatings and sealant. Specialized or minor repairs when needed.	Electronic components are not functioning as intended. Artwork is in need of detailed artwork inspection, specialized cleaning and lighting replacement.	Perform first detailed annual artwork inspection and document. Develop a condition and corrective action report, and manage implementation of specialized cleaning, repairs and conservation as resourced.
Universal City / Studio City	Margaret Garcia  <i>Tree of Califas</i>  Carved ceramic tile; stainless steel, painted steel and granite benches; laminated imagery	2000	Conduct detailed annual artwork inspection, documentation and cleaning. Biennial application of coatings and sealant. Specialized or minor repairs when needed.	Graffiti damage. Artwork is in need of detailed artwork inspection, specialized cleaning and repairs.	Perform first detailed annual artwork inspection and document. Develop a condition and corrective action report, and manage implementation of specialized cleaning, repairs and conservation as resourced.

Metro Red Line					
Station	Artist / Artwork Title / Components	Year Installed	Annual Maintenance Requirements	Condition	FY19 Action Plan
North Hollywood	Anne Marie Karlsen  <i>Kaleidoscope Dreams</i>  Ceramic tile	2000	Conduct detailed annual artwork inspection, documentation and cleaning. Biennial replacement of lighting and application of coatings and sealant. Specialized or minor repairs when needed.	Electronic components are not functioning as intended. Artwork is in need of detailed artwork inspection, specialized cleaning and lighting replacement.	Perform first detailed annual artwork inspection and document. Develop a condition and corrective action report, and manage implementation of specialized cleaning, repairs and conservation as resourced.
7th Street / Metro Center	Rotating Artist  <i>Rotating Photo Installations</i>  Anodized aluminum, plexiglass, duratrans film	2001	Conduct detailed annual artwork inspection, documentation and cleaning. Annual cleaning and replacement of bulbs at the time of artwork rotation.	Electronic components are outdated and not functioning as intended. Artwork is in need of detailed artwork inspection, specialized cleaning and housing replacement.	Perform first detailed annual artwork inspection and document. Develop a condition and corrective action report, and manage implementation of specialized cleaning, repairs and conservation as resourced.
Vermont / Beverly	Rotating Artist  <i>Rotating Photo Installations</i>  Anodized aluminum, plexiglass, duratrans film	2001	Conduct detailed annual artwork inspection, documentation and cleaning. Annual cleaning and replacement of bulbs at the time of artwork rotation.	Electronic components are outdated and not functioning as intended. Artwork is in need of detailed artwork inspection, specialized cleaning and housing replacement.	Perform first detailed annual artwork inspection and document. Develop a condition and corrective action report, and manage implementation of specialized cleaning, repairs and conservation as resourced.
Hollywood / Highland	Rotating Artist  <i>Rotating Photo Installations</i>  Anodized aluminum, plexiglass, duratrans film	2001	Conduct detailed annual artwork inspection, documentation and cleaning. Annual cleaning and replacement of bulbs at the time of artwork rotation.	Electronic components are outdated and not functioning as intended. Artwork is in need of detailed artwork inspection, specialized cleaning and housing replacement.	Perform first detailed annual artwork inspection and document. Develop a condition and corrective action report, and manage implementation of specialized cleaning, repairs and conservation as resourced.
Wilshire / Normandie	Rotating Artist  <i>Rotating Photo Installations</i>  Anodized aluminum, plexiglass, duratrans film	2001	Conduct detailed annual artwork inspection, documentation and cleaning. Annual cleaning and replacement of bulbs at the time of artwork rotation.	Electronic components are outdated and not functioning as intended. Artwork is in need of detailed artwork inspection, specialized cleaning and housing replacement.	Perform first detailed annual artwork inspection and document. Develop a condition and corrective action report, and manage implementation of specialized cleaning, repairs and conservation as resourced.
Universal City / Studio City	Rotating Artist  <i>Rotating Photo Installations</i>  Anodized aluminum, plexiglass, duratrans film	2001	Conduct detailed annual artwork inspection, documentation and cleaning. Annual cleaning and replacement of bulbs at the time of artwork rotation.	Electronic components are outdated and not functioning as intended. Artwork is in need of detailed artwork inspection, specialized cleaning and housing replacement.	Perform first detailed annual artwork inspection and document. Develop a condition and corrective action report, and manage implementation of specialized cleaning, repairs and conservation as resourced.
7th Street / Metro Center	K. Kobayashi, N. Korten & M. Perlas  <i>Plantings</i>  Pigmented concrete benches; cast aluminum, painted steel, gobos and electrical components	2002	Conduct detailed annual artwork inspection, documentation and cleaning. Annual cleaning and replacement of bulbs at the time of artwork rotation.	Electronic components are outdated and not functioning as intended. Artwork is in need of detailed artwork inspection, specialized cleaning and housing replacement.	Perform first detailed annual artwork inspection and document. Develop a condition and corrective action report, and manage implementation of specialized cleaning, repairs and conservation as resourced.
Civic Center / Grand Park	Peter Requam  <i>Civic Center Benches</i>  Granite benches	2004	Conduct detailed annual artwork inspection and develop condition report. Document conditions and develop Maintenance Requirements. Specialized or minor repairs when needed.	Graffiti damage present. Artwork is in need of detailed artwork inspection, specialized cleaning, sealant and lighting replacement.	Perform first detailed annual artwork inspection and document. Develop a condition and corrective action report, and manage implementation of specialized cleaning, repairs and conservation as resourced.

Metro Red Line					
Station	Artist / Artwork Title / Components	Year Installed	Annual Maintenance Requirements	Condition	FY19 Action Plan
Civic Center / Grand Park	Samm Kunce  <i>In the Living Rock</i> Glass mosaic and granite murals	2004	Conduct detailed annual artwork inspection and develop condition report. Document conditions and develop Maintenance Requirements. Specialized or minor repairs when needed.	Graffiti damage present. Artwork is in need of detailed artwork inspection, specialized cleaning, sealant and lighting replacement.	Perform first detailed annual artwork inspection and document. Develop a condition and corrective action report, and manage implementation of specialized cleaning, repairs and conservation as resourced.
Vermont / Santa Monica	George Legrady  <i>Kinetic Flow</i> Porcelain enamel mural	2006	Conduct detailed annual artwork inspection and develop condition report. Document conditions and develop Maintenance Requirements. Specialized or minor repairs when needed.	Graffiti damage present. Artwork is in need of detailed artwork inspection, specialized cleaning, sealant and lighting replacement.	Perform first detailed annual artwork inspection and document. Develop a condition and corrective action report, and manage implementation of specialized cleaning, repairs and conservation as resourced.
Civic Center Station	Faith Ringgold  <i>People Portraits: in Creativity, Performing, Sports &amp; Fashion</i> Glass mosaic panels	2010	Conduct detailed annual artwork inspection and develop condition report. Document conditions and develop Maintenance Requirements. Specialized or minor repairs when needed.	Artwork is in need of detailed artwork inspection, specialized cleaning, sealant and lighting replacement.	Perform first detailed annual artwork inspection and document. Develop a condition and corrective action report, and manage implementation of specialized cleaning, repairs and conservation as resourced.
Westlake / MacArthur Park	Sonia Romero  <i>MacArthur Park, Urban Oasis</i> Hand carved porcelain mosaic panels	2010	Conduct detailed annual artwork inspection and develop condition report. Document conditions and develop Maintenance Requirements. Specialized or minor repairs when needed.	Water intrusion at station at walls impacting Artwork mural. Artwork is in need of detailed artwork inspection, specialized cleaning, sealant and lighting replacement.	Perform first detailed annual artwork inspection and document. Develop a condition and corrective action report, and manage implementation of specialized cleaning, repairs and conservation as resourced.
Vermont / Beverly	Tyree Guyton  <i>People in Motion</i> Glass mosaic mural	2010	Conduct detailed annual artwork inspection and develop condition report. Document conditions and develop Maintenance Requirements. Specialized or minor repairs when needed.	Artwork is in need of detailed artwork inspection, specialized cleaning, sealant and lighting replacement.	Perform first detailed annual artwork inspection and document. Develop a condition and corrective action report, and manage implementation of specialized cleaning, repairs and conservation as resourced.
Universal City / Studio City	Stephen Johnson  <i>Untitled</i> Glass mosaic mural	2010	Conduct detailed annual artwork inspection and develop condition report. Document conditions and develop Maintenance Requirements. Specialized or minor repairs when needed.	Artwork is in need of detailed artwork inspection, specialized cleaning, sealant and lighting replacement.	Perform first detailed annual artwork inspection and document. Develop a condition and corrective action report, and manage implementation of specialized cleaning, repairs and conservation as resourced.
Wilshire / Vermont	Bob Zoell  <i>No Title</i> Ceramic tile murals	2004	Conduct detailed annual artwork inspection and develop condition report. Document conditions and develop Maintenance Requirements. Specialized or minor repairs when needed.	Broken tile and graffiti etchings throughout. Artwork is in need of detailed artwork inspection, specialized cleaning, sealant and lighting replacement.	Perform first detailed annual artwork inspection and document. Develop a condition and corrective action report, and manage implementation of specialized cleaning, repairs and conservation as resourced.

Note: Per the Board adopted phased art asset management program, resources for all other existing lines not included in this report will be requested as each line reaches its 20-25 year anniversary and in staffing plans for new lines when they open to public.