



Board Report

File #: 2018-0783, **File Type:** Oral Report / Presentation

Agenda Number: 31.

**CONSTRUCTION COMMITTEE
JANUARY 17, 2019**

SUBJECT: PROGRAM MANAGEMENT MAJOR PROJECT STATUS REPORT

ACTION: ORAL REPORT

RECOMMENDATION

RECEIVE oral report on the Major Project Status by the Chief Program Management Officer.

DISCUSSION

Update report covering the month of January 2019 by the Chief Program Management Officer.

Prepared by:

- **Crenshaw/LAX** - Sameh Ghaly, Sr EO Project Mgmt., (213) 418-3369
- **Regional Connector** - Gary Baker, EO Project Mgmt., (213) 893-7191
- **Westside Purple Line Ext 1** - James Cohen, EO Project Mgmt., (213) 922-7911
- **Westside Purple Line Ext 2** - Michael McKenna, EO Project Mgmt., (213) 312-3132
- **Westside Purple Line Ext 3** - Michael McKenna, EO Project Mgmt., (213) 312-3132
- **Patsaouras Plaza Busway Station** - Timothy Lindholm, EO Project Engr., (213) 922-7297
- **Willowbrook/Rosa Park Station** - Timothy Lindholm, EO Project Engr., (213) 922-7297
- **The New Blue** - Androush Danielians, EO Project Engr., (213) 922-7598
- **I-210 Barrier Replacement** - Androush Danielians, EO Project Engr., (213) 922-7598
- **I-5 North** - Abdollah Ansari, Sr EO Construction & Engr., (213) 922-4781
- **I-5 South** - Abdollah Ansari, Sr EO Construction & Engr., (213) 922-4781
- **Presentation** - Yohana Jonathan, Principal Program Mgmt. Analyst, (213) 922-7592

Program Management Major Project Status Report

Presented By

Richard Clarke

Chief Program Management Officer

January 2019

Construction Committee

Los Angeles County Metropolitan Transportation Authority



PROJECT BUDGET & SCHEDULE STATUS SUMMARY CHART

Project	Cost Performance	Schedule Performance	Comments
Crenshaw/LAX			Project is 88% complete. Metro issued non-compensable time extension to contractor extending Contract Substantial Completion Milestone to December 2019. The forecast revenue service date is Spring 2020.
Regional Connector			Project is 54% complete and proceeding on schedule and within budget.
Westside Purple Line Extension-Section 1			Project is 43% complete and proceeding on schedule and within budget.
Westside Purple Line Extension-Section 2			Project is 14% complete and proceeding on schedule and within budget.
Westside Purple Line Extension-Section 3			<ul style="list-style-type: none"> Received FTA conditional approval for Letter of No Prejudice (LONP) on September 19, 2018. Contract award to Frontier-Kemper/Tutor Perini Joint Venture was issued on November 30, 2018. C1151 Tunnel Contract Notice to Proceed is subject to FTA approval of 130C environmental document.
Patsaouras Plaza			Project is approximately 65% complete. Metro issued Order of Suspension August 3 rd due to archaeological and Native American issues. With anticipated construction delay of 10 months, significant impacts to project schedule and budget expected. Project will resume construction by late January/early February 2019
Willowbrook/Rosa Parks Station			Early Start Construction Work completed. Foundations for Plaza Buildings complete with vertical structural steel being installed. Project teams preparing for New Blue shut down.
Metro Blue Line Projects			Early Start Work is at 95% completion. Established a combined schedule for three projects (including Willowbrook Station) and Metro internal work
I-210 Barrier Replacement			Finding effective mitigation measures to some of the non-standard freeway features along with mitigation measures to alleviate freeway traffic disruption during construction are delaying the project.
I-5 North: SR 118 to SR 134			Segment 1 & 2 (SR 118 to Buena Vista) are complete and open to traffic. Segment 3(Empire) is 71% complete. Segment 4 (Magnolia to SR-134) is 84% complete.
I-5 South: Orange County Line to I-605			Segment 2 (Valley View) is 34% complete. Segment 3(Rosecrans) is open to traffic. Segment 4 (Imperial) is 94% complete. Segment 5 (Florence) is 74% complete.

January 2019



On target



Possible problem



Major issue




Metro 2

Construction Committee

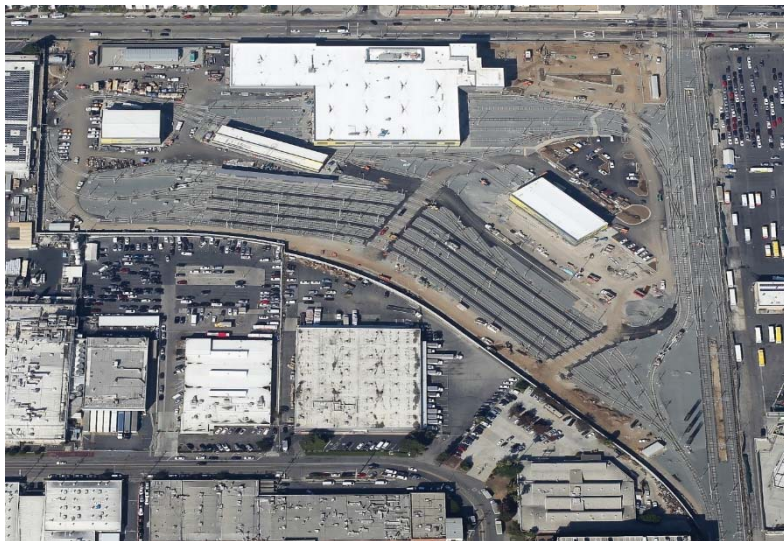
Los Angeles County Metropolitan Transportation Authority

CRENSHAW/LAX TRANSIT PROJECT

 BUDGET		
	<u>Current</u>	<u>Forecast</u>
TOTAL COST	\$2,058M	\$2,058M

 SCHEDULE		
	<u>Current</u>	<u>Forecast</u>
	Fall	Spring
	2019	2020
REVENUE		
OPERATION		

- Overall Project Progress is 88% complete; working with contractor to address construction schedule
- Contractor continues critical construction efforts in the five underground structures in the north end
- Major work in January for Crenshaw Line track and systems cut-over to Green Line
- Southwestern Yard Maintenance Facility (Division 16) nearing substantial completion



Aerial view of Division 16



Trains delivered to Division 16 for yard systems testing

January 2019



On target



Possible problem



Major issue

Construction Committee

Los Angeles County Metropolitan Transportation Authority



Metro 3

REGIONAL CONNECTOR TRANSIT PROJECT

OK BUDGET

	<u>Current</u>	<u>Forecast</u>
TOTAL COST	\$1,810M	\$1,810M

* Includes Board approved LOP budget plus finance costs.

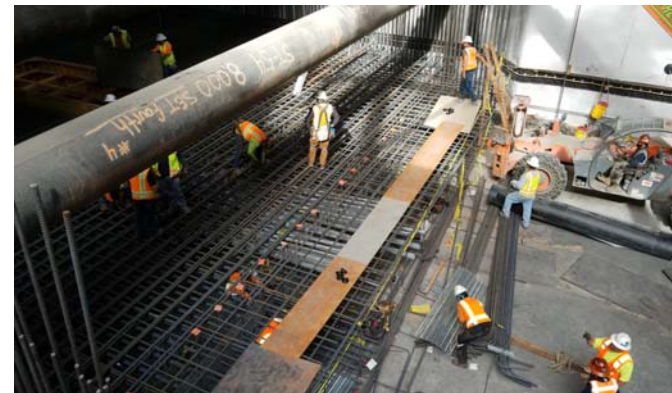
- Overall Project Progress is 54% complete
- Underground:** SEM crossover cavern excavation progressing per plan; approximately 70% complete
- Little Tokyo/Arts District Station and 1st Street:** Excavation and related support of utilities are ongoing; utility work on Alameda in planning to support mid 2019 cut and cover operations
- Historic Broadway Station:** Structural concrete operations continue in station box with HDPE, rebar, and forms
- Grand Av Arts/Bunker Hill Station:** Permanent structural concrete operations continue throughout station
- Flower Street:** Excavation and utility protection are ongoing; excavation complete 4th through 5th Streets; structural concrete underway

OK SCHEDULE

	<u>Current</u>	<u>Forecast</u>
REVENUE OPERATION	Winter 2021-2022	Winter 2021-2022



Preparations for sewer bypass under Flower Street



Track invert slab reinforcement at Historic Broadway Station

January 2019



On target



Possible problem



Major issue

Construction Committee

Los Angeles County Metropolitan Transportation Authority



Metro 4

WESTSIDE PURPLE LINE EXTENSION – SECTION 1

OK BUDGET

	<u>Current</u>	<u>Forecast</u>
TOTAL COST*	\$3,154M	\$3,154M

* Includes Board approved LOP budget plus finance costs.

OK SCHEDULE

	<u>Current</u>	<u>Forecast</u>
REVENUE	Fall	Fall
OPERATION	2024 (FFGA)	2023

- Overall Project Progress is 43% complete
- Wilshire/Western Retrieval Shaft:** Excavation to the bottom of the Western Retrieval Shaft completed in early December 2018.
- Wilshire/La Brea Station:** TBM #1 tunnel muck removal and precast tunnel segments delivery is on-going. TBM #2 was launched on November 30, 2018. Station concrete activities for interior load bearing walls have commenced.
- Wilshire/Fairfax Station:** Installation of canopy/soil nails is complete. Heavy excavation and lagging has resumed.
- Wilshire/La Cienega Station:** Level B excavation and struts are complete. Installation of Level C walers has commenced. Excavation on the main station box continues. Maintenance of surface aesthetics per the City of Beverly Hills Memorandum of Understanding is ongoing.



Wilshire/La Brea Station – Setting forms for Interior Walls



Wilshire/La Brea Station – Hanging Ventilation at Tunnel Heading



WESTSIDE PURPLE LINE EXTENSION – SECTION 2

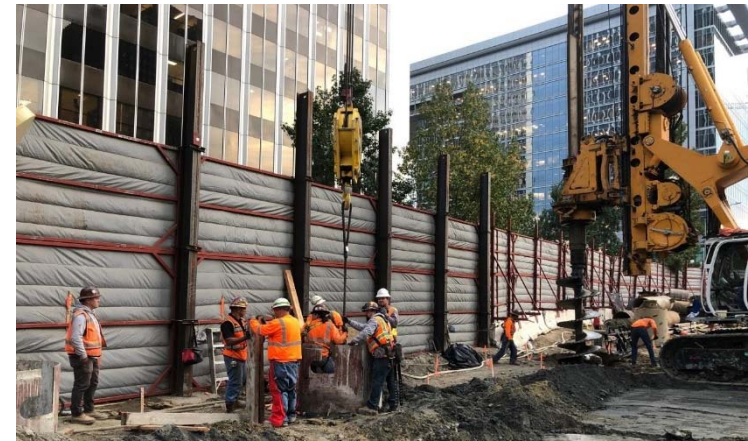
BUDGET

	<u>Current</u>	<u>Forecast</u>
TOTAL COST*	\$2,530M	\$2,530M

* Includes Board approved LOP budget plus finance costs.

SCHEDULE

	<u>Current</u>	<u>Forecast</u>
REVENUE OPERATION	Winter 2026 (FFGA)	Summer 2025



Pile Installation in Century City



Former Ace Gallery Demolition in Beverly Hills

- Overall project progress is 14% complete.
- Final design progress is 87% complete.
- **Century City Constellation**
 - Civil work completed in August 2018 for LADWP Power and in December 2018 for AT&T. Cable pulling and splicing continues through November 2019.
 - Installation of power substation continues.
 - Contractor completed all 88 soldier piles at the tunnel boring machine (TBM) launch box in December 2018.
 - Santa Monica bus layover construction is ongoing with an anticipated completion in January/February 2019.
- **Wilshire/Rodeo**
 - Demolition of former Ace Gallery completed in November 2018.
 - Preparation for contractor utility relocations is ongoing.

January 2019



On target



Possible problem



Major issue

Construction Committee

Los Angeles County Metropolitan Transportation Authority



Metro 6

WESTSIDE PURPLE LINE EXTENSION – SECTION 3

BUDGET

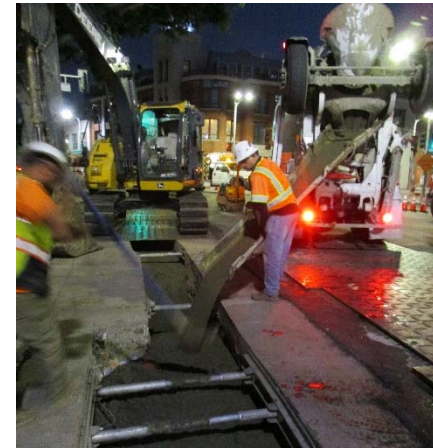
	<u>Current</u>	<u>Forecast</u>
TOTAL COST*	TBD	\$3,664M

* Includes finance costs.

SCHEDULE

	<u>Current</u>	<u>Forecast</u>
REVENUE OPERATION	TBD	2027

- Received FTA's conditional approval for Letter of No Prejudice (LONP) for the Tunnel Contract on September 19, 2018.
- C1151 Tunnel Contract – Contract award to Frontier-Kemper/Tutor Perini Joint Venture was issued on November 30, 2018. C1151 Tunnel Contract Notice to Proceed is subject to FTA approval of 130c environmental document.
- C1152 Stations, Trackwork and Systems Contract – Proposals were received on August 22, 2018. Contract award is subject to Board approval and FTA's approval of a Full Funding Grant Agreement (FFGA).
- C1153 Advanced Utility Relocations (AUR) Contract – Overall progress is 60% complete.



Line B Slurry Backfill on Gayley Avenue



Power Conduit Installation at Wilshire and Westwood Boulevards

January 2019



On target



Possible problem



Major issue


Construction Committee

Los Angeles County Metropolitan Transportation Authority



Metro 7

PATSAOURAS PLAZA BUSWAY STATION

 BUDGET		
	<u>Current</u>	<u>Forecast</u>
TOTAL COST	\$39.7M	\$TBD

 SCHEDULE		
	<u>Current</u>	<u>Forecast</u>
SUBSTANTIAL COMPLETION	Winter 2018	Winter 2019

- Overall project progress approximately 65% complete
- Project contractor and construction suspension continues due to archaeological and Native American resource issues
 - Project team is working diligently to resume construction with FTA and the consulting parties by late January/early February 2019
- Mobilization of archaeological field work began on November 12, 2018 with investigation and evaluation of architectural features and soil screening and consultations with SHPO
- Archaeological and Native American issues have deplete project contingency, requiring Life of Project (LOP) budget increase once full extent of impact realized
 - Metro is currently working with contractor on settlement negotiations with expected Board Report in February 2019

January 2019



On target



Possible problem



Major issue



Metro 8

Construction Committee

Los Angeles County Metropolitan Transportation Authority

WILLOWBROOK/ROSA PARKS STATION

OK BUDGET		
	<u>Current</u>	<u>Forecast</u>
TOTAL COST	\$109.3M	\$109.3M

OK SCHEDULE		
	<u>Current</u>	<u>Forecast</u>
SUBSTANTIAL COMPLETION	Summer 2020	Summer 2020

- Early Start Phase (Package E) construction at Substantial Completion.
- Project trailers are operational and the Willowbrook Rosa Park (WRP)/New Blue team are now based at the WRP site.
- Package A+C Plaza Buildings foundations are complete. Vertical structural steel being installed.
- Package B is in full coordination with Caltrans with plans for procurement for early 2019.



Early Start Construction and Demolition for Package A+C

January 2019



On target



Possible problem



Major issue


Construction Committee


Los Angeles County Metropolitan Transportation Authority



Metro 9

THE NEW BLUE

 BUDGET		
	<u>Current</u>	<u>Forecast</u>
TOTAL COST	\$221.3M	\$221.3M

 SCHEDULE		
	<u>Current</u>	<u>Forecast</u>
SUBSTANTIAL COMPLETION	Fall 2019	Fall 2019

- MBL Resignaling 95% complete: Early Start underground work is proceeding
- Factory Testing for South Segment Train Control work began in December 2018
- Established baseline construction schedule for all three projects (including Rosa Parks Willowbrook Station)
- The Metro Blue line southern shutdown will begin at 0200 hours on January 26, 2019



UG conduits crossing the street



New conduits

January 2019



On target



Possible problem



Major issue

Construction Committee

Los Angeles County Metropolitan Transportation Authority



Metro

Metro E3 Initiative – New Blue

Metro Youth Career Experience (Pilot program with Compton High School)

Impact: 125 Compton High School 9th graders with GPA of 2.0-2.5 that have not yet decided on a Career Technical Education (CTE) career path/sector

Roll-Out: First module will be facilitated in January 2019—one module will be facilitated each month thereafter (Jan-May)

5 full day project based learning modules that will examine: Transportation Planning, Systems Engineering, Operations, Communications and Construction Engineering

- Each module will accommodate 25 students

Communication Plan: Partner and coordinate with Compton Unified School District and Compton High School Educators

- Facilitated 8 information sessions to get students excited about this opportunity



Metro Youth Career Experience - New Blue

Module 1: Build-a-Station

Transportation Career Path: Transportation Planner, Architect, Landscape Architect, Civil Engineer, Environmental Engineer

Summary:

In order to provide students with an in-depth look at the development stages involved in this major capital improvement project, the “Build-a-Station” module will provide direct exposure to the variety of tools that will be used to build the physical and social infrastructure needed to modernize the station.

- The students will use creative sustainable “placemaking” strategies including an integrated multi-use plaza (including a bike hub and bike lanes), wayfinding, circulation and connections to the community as well as security, and safety.

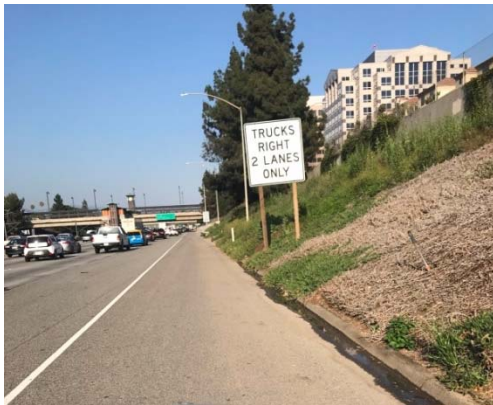


I-210 BARRIER REPLACEMENT PROJECT

◆ BUDGET		
	Current	Forecast
TOTAL COST	\$11.08M	\$22.54M
	Design	Design

◆ SCHEDULE		
	Current	Forecast
Complete Design (Proj 1)	Summer 2019	Summer 2019
Complete Design (Proj 2)	Spring 2020	Spring 2020

- Conducting traffic micro-simulation studies to quantify the traffic delays during construction which are expected to be beyond the normal acceptable range and provide for effective mitigation measures.
- Coordinating mitigation measures with Caltrans to address existing non-standard freeway features and other non-standard features caused by this project
- Project 1: Segment from Michillinda to Iconic Bridge – Continuing environmental studies
- Project 2: Segment from west end of the project to Michillinda – Continuing traffic micro-simulation studies
- Separate Board report to request authorization to complete final design.



Newly Installed Caltrans Freeway Sign



Incident in 2014



Newly Installed Speed Limit Sign

January 2019



On target



Possible problem



Major issue

Construction Committee

Los Angeles County Metropolitan Transportation Authority



Metro 13

I-5 NORTH: SR 118 TO SR 134



January 2019

Construction Committee

Los Angeles County Metropolitan Transportation Authority

I-5 NORTH: SR 118 TO SR 134

◇ BUDGET		
	<u>Current</u>	<u>Forecast</u>
TOTAL COST	\$880.9M	TBD

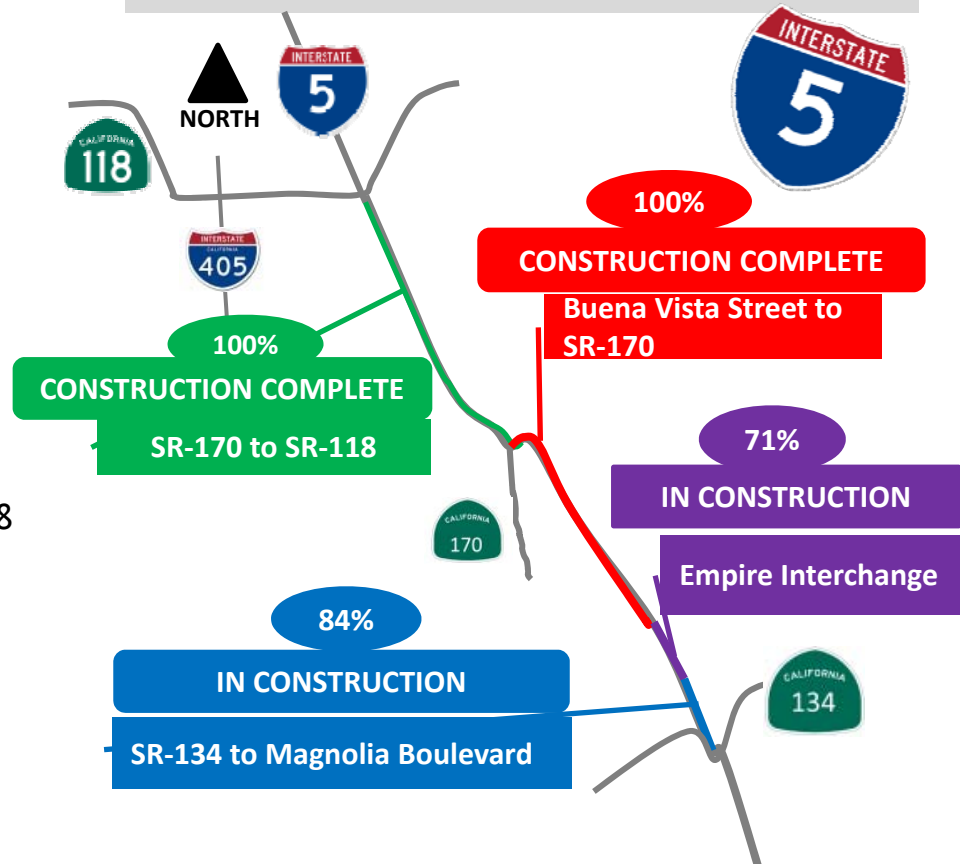
◇ SCHEDULE		
ANTICIPATED PROJECT COMPLETION	<u>Current</u>	<u>Forecast</u>
	Fall 2021	Spring 2022

Project Managed by Caltrans:

- Approved budget: \$880.9 M
- Estimated Cost to Complete Construction: TBD

Accomplishments:

- Seg. 1:** SR118 to SR170: Open to traffic. Contract acceptance and close out in progress
- Seg. 2:** SR170 to Buena Vista: Open to traffic. Contract acceptance and close out in progress. Final Settlement approved by the Board in September 2018
- Seg. 3:** Buena Vista to Magnolia Blvd Construction in progress (71% Complete) including Empire Avenue Interchange
- Seg. 4:** Magnolia Blvd to SR134: Construction in progress (84% Complete)



January 2019



On target



Possible problem



Major issue

Construction Committee

Los Angeles County Metropolitan Transportation Authority



Metro 15

I-5 SOUTH: ORANGE COUNTY LINE TO I-605

BUDGET		
	Current	Forecast
TOTAL COST	\$1.888B	TBD

SCHEDULE		
ANTICIPATED PROJECT COMPLETION	Current Spring 2022	Forecast Fall 2022

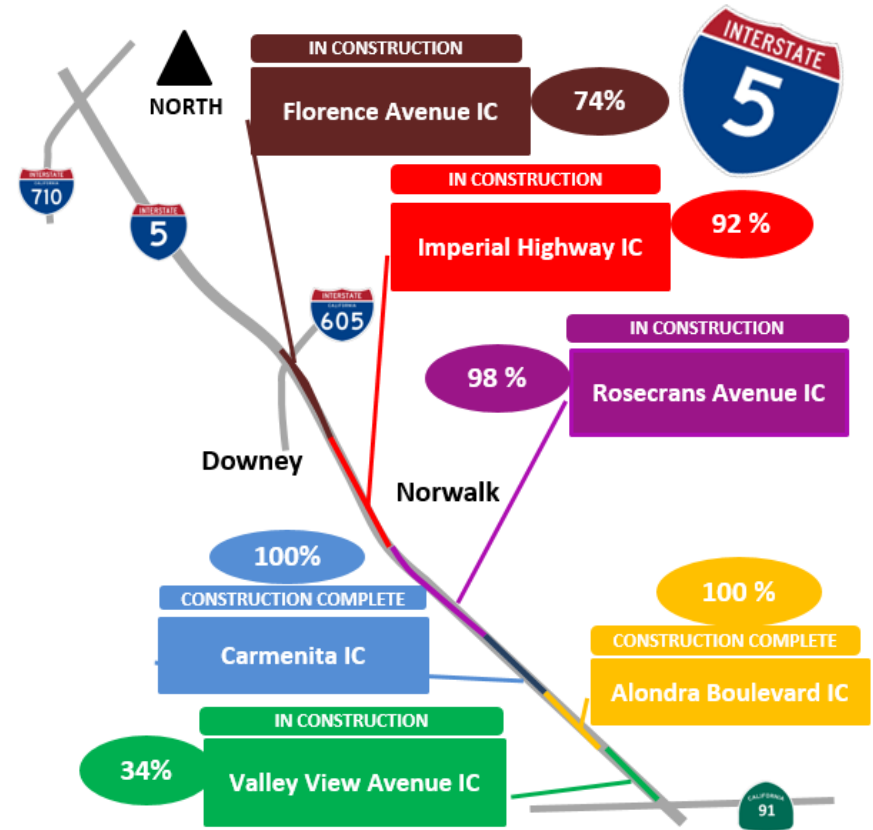
Project Managed by Caltrans:

- Approved budget: \$880.9 M
- Estimated Cost to Complete Construction: TBD

Accomplishments:

- Carmenita Rd Interchange (IC): Open to traffic. Contract acceptance and close out in progress
- Seg. 1: Alondra Blvd IC: Open to traffic. Contract acceptance and close out in progress
- Seg. 2: Valley View Ave IC: CIP* (34% Complete)
- Seg. 3: Rosecrans Ave IC: Open to Traffic. Plant Establishment Period Construction in progress (98% Complete)
- Seg 4: Imperial Highway IC: CIP* (92% Complete)
- Seg 5: Florence Ave IC: CIP*(74% Complete)

*Construction in progress (CIP)



January 2019



On target



Possible problem



Major issue



Metro 16

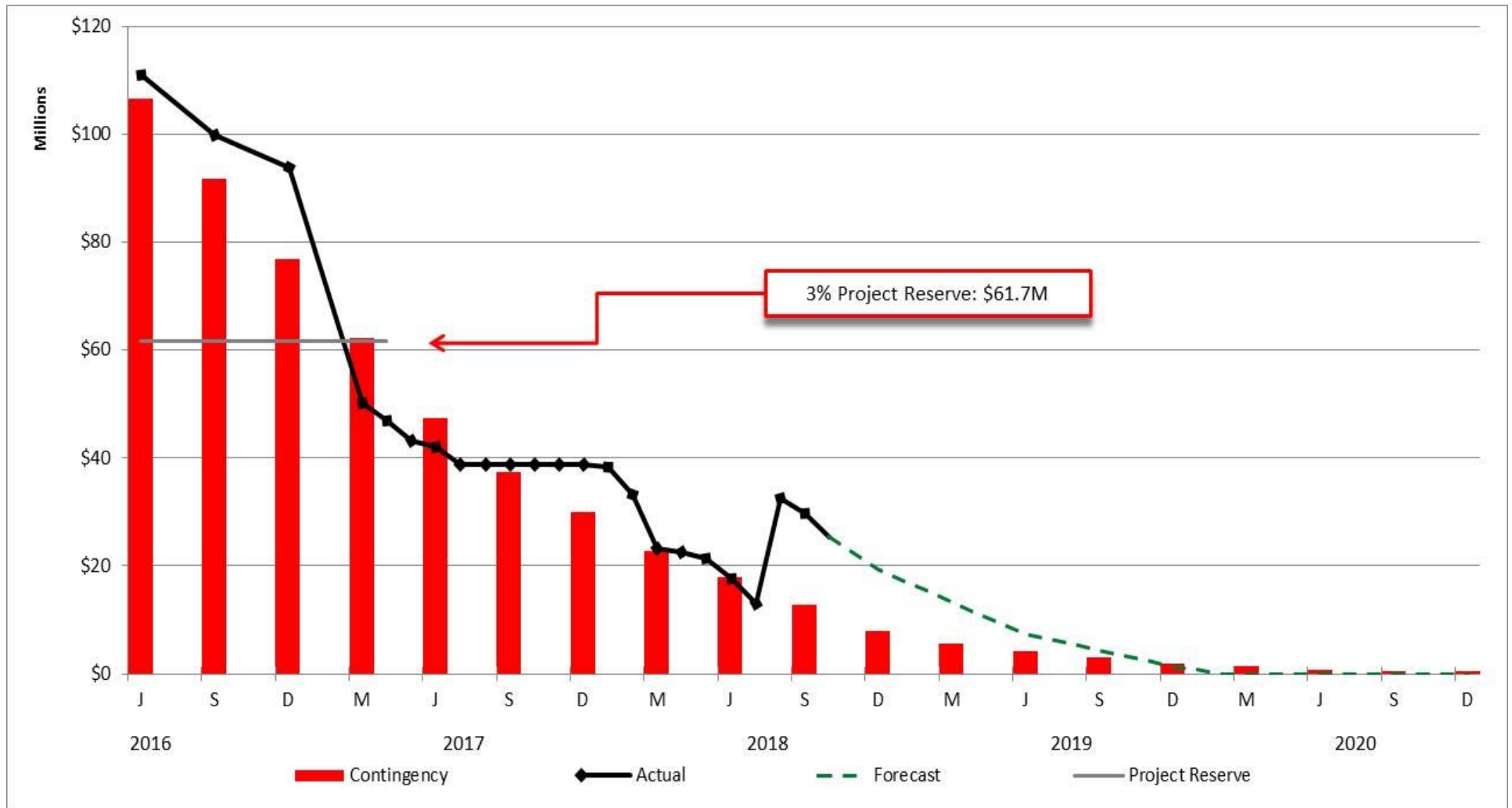
Construction Committee

Los Angeles County Metropolitan Transportation Authority

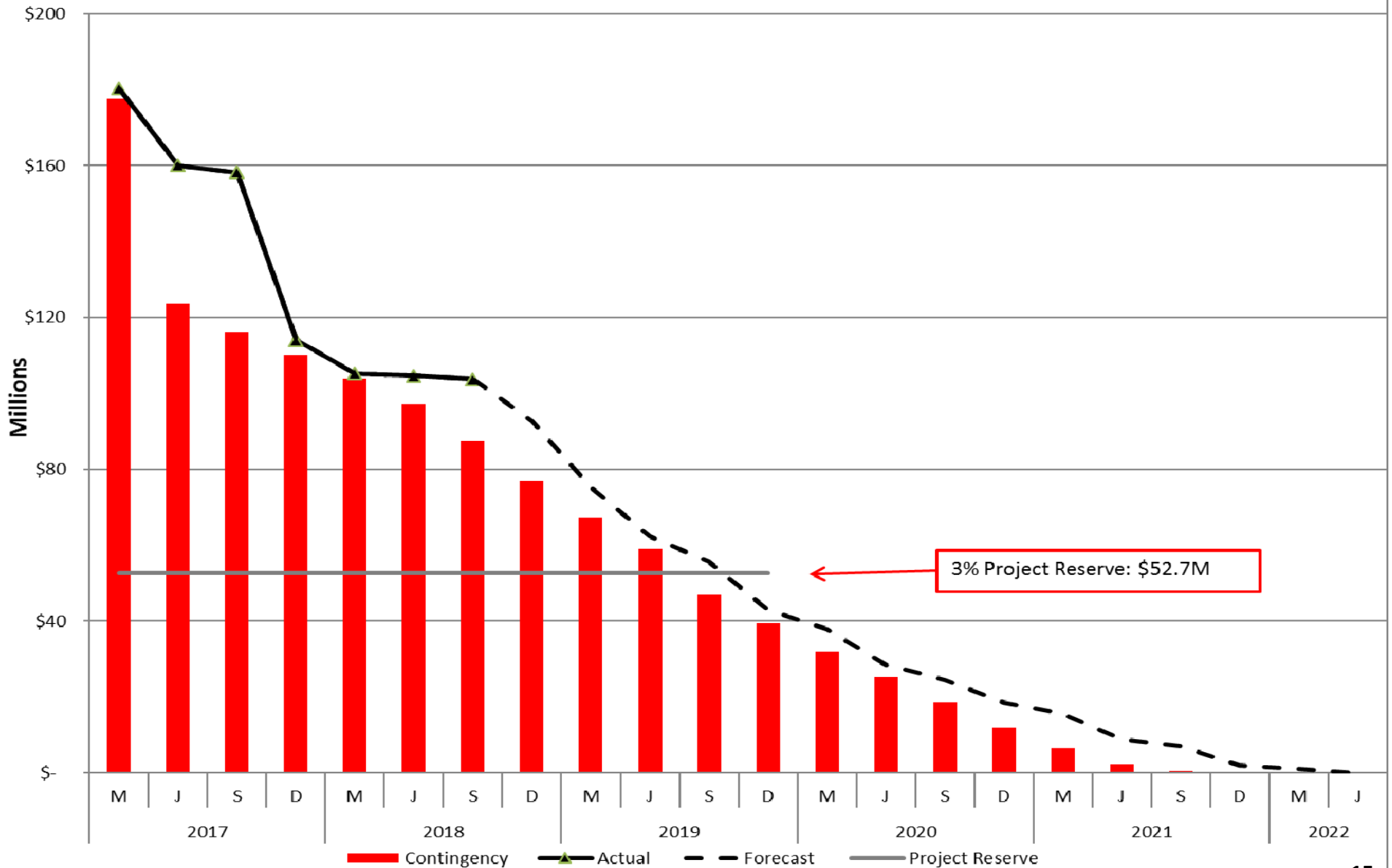
Crenshaw/LAX Transit Project

Project Cost Contingency Drawdown

November 2018



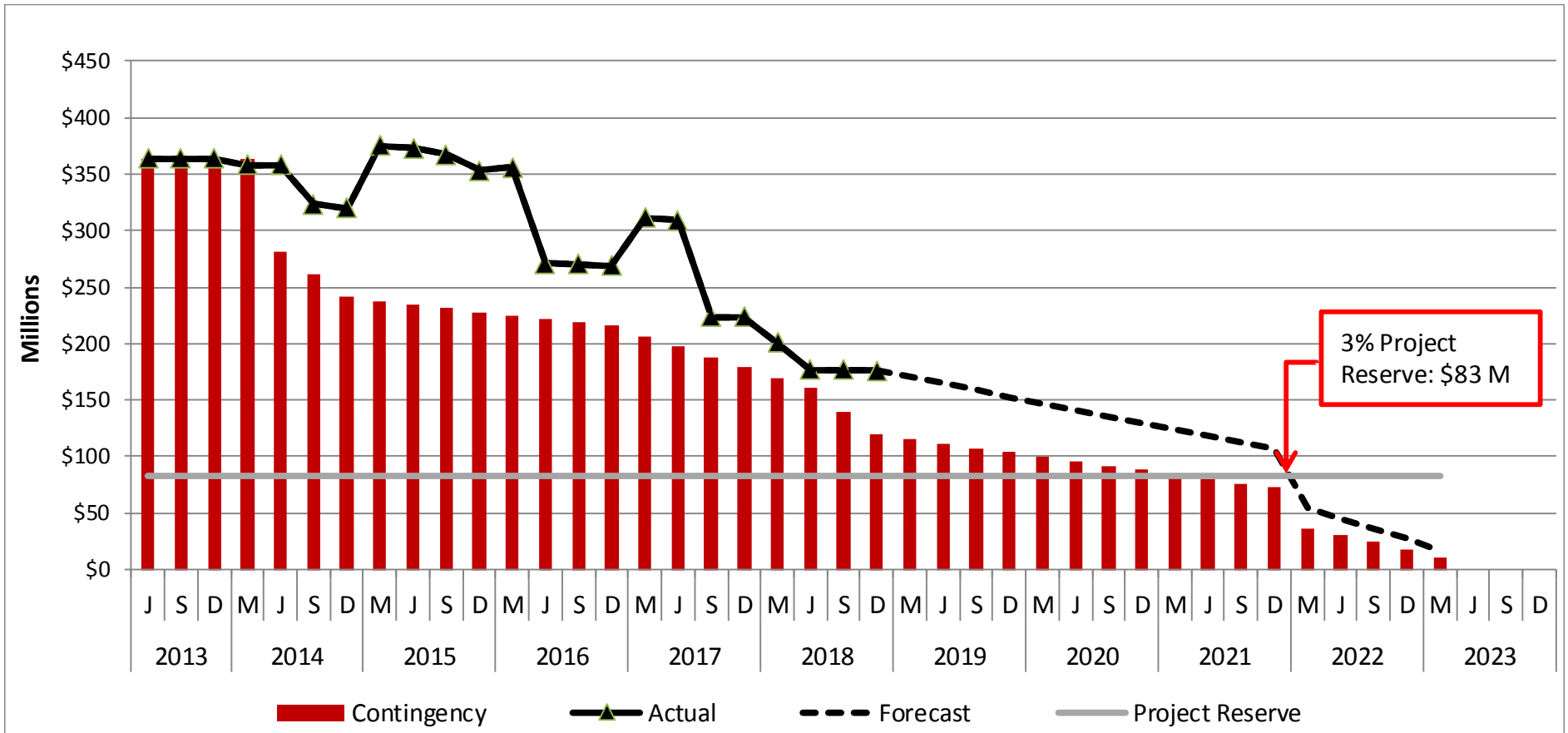
Regional Connector Project Cost Contingency Drawdown



Westside Purple Line Extension – Section 1

Project Cost Contingency Drawdown

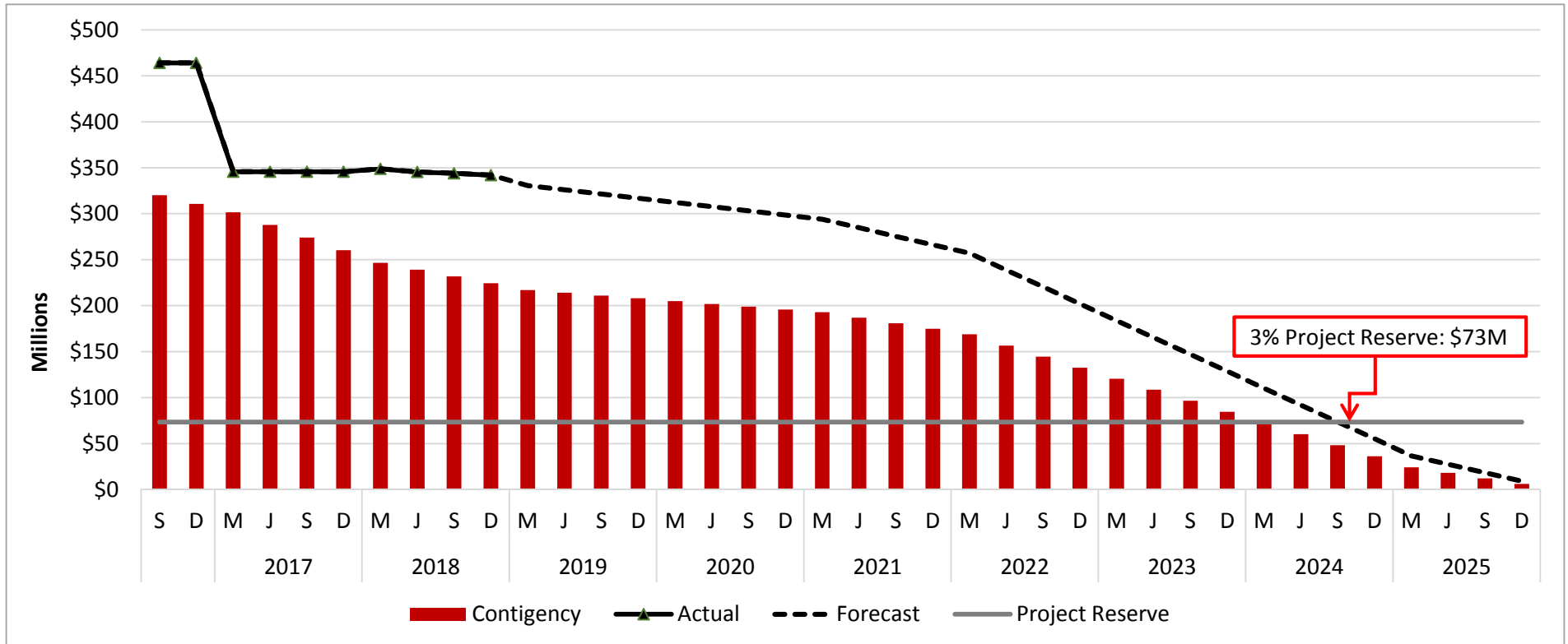
November 2018



Westside Purple Line Extension – Section 2

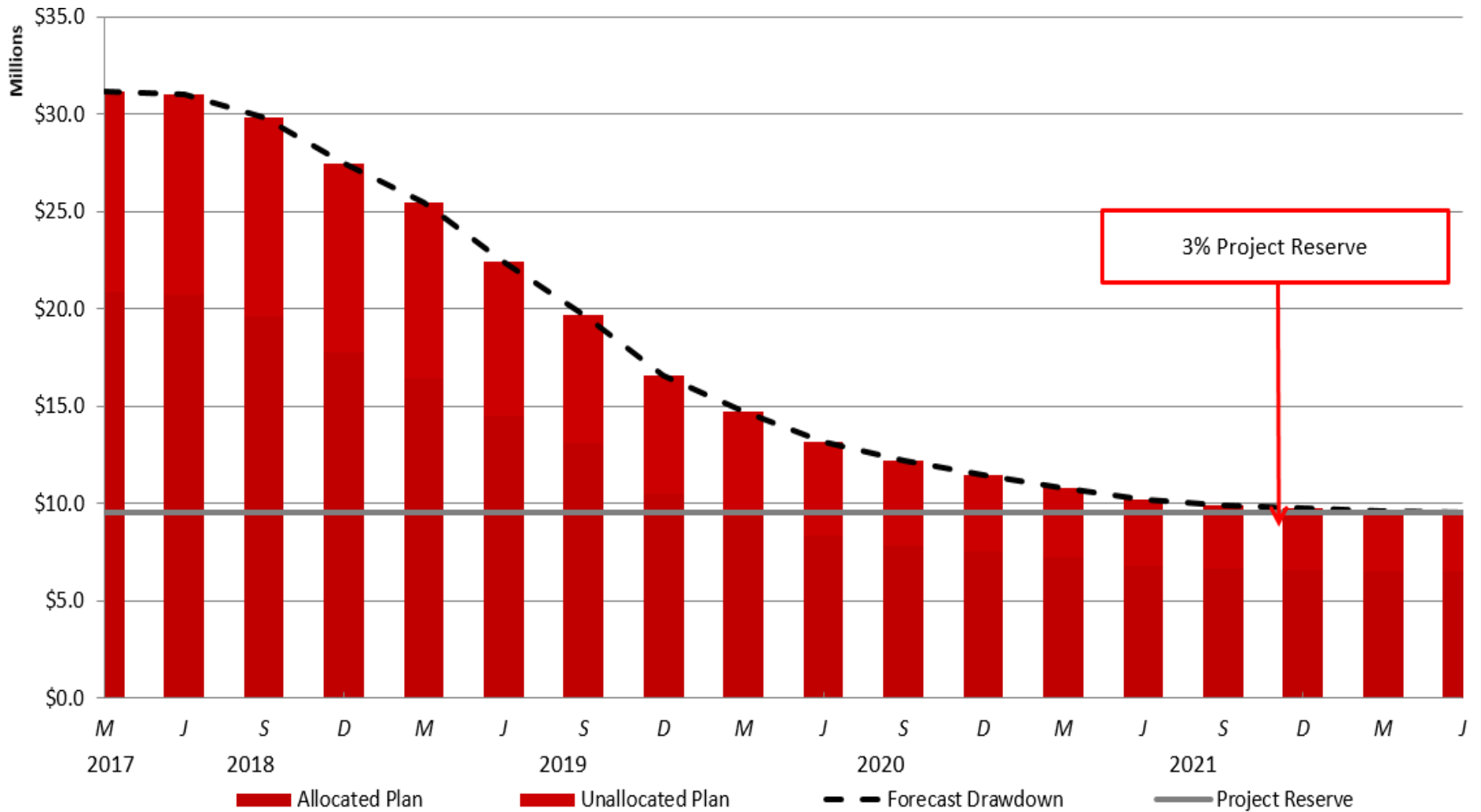
Project Cost Contingency Drawdown

November 2018



The New Blue

Project Cost Contingency Drawdown



- Blue Line Signal Rehabilitation
- Blue Line Track and System Refurbishment
- Willowbrook/Rose Park Station