



Board Report

File #: 2019-0013, **File Type:** Informational Report

Agenda Number: 20.

OPERATIONS, SAFETY AND CUSTOMER EXPERIENCE COMMITTEE FEBRUARY 21, 2019

SUBJECT: MONTHLY UPDATE ON TRANSIT SAFETY AND SECURITY PERFORMANCE

ACTION: RECEIVE AND FILE

RECOMMENDATION

RECEIVE AND FILE Transit Safety and Security Report.

ISSUE

This report reflects December 2018 performance data as reported under the transit policing deployment strategy which is a combination of in-house fare compliance officers, private security for fixed assets and a multi-agency law enforcement deployment strategy by the Los Angeles Police Department (LAPD), Los Angeles County Sheriff's Department (LASD), and Long Beach Police Department (LBPD). The information in this report summarizes Crimes Against Persons, Crimes Against Property, and Crimes Against Society data under Uniform Crime Reporting (UCR) Program, average emergency response times, assaults on bus operators, and Metro's fare compliance and homeless outreach efforts. The Six Key Performance Indicators (KPI) are Uniform Crime Reporting guidelines, Average Emergency Response Times, Percentage of Time Spent on the System, Ratio of Staffing Levels vs Vacant Assignments, Ratio of Proactive vs Dispatched Activity, and Number of Grade Crossing Operations.

BACKGROUND

UCR is a National Incident-Based Reporting System from the US Department of Justice. It captures crime offenses in one of three categories: Crimes Against Persons, Crimes Against Property, and Crimes Against Society.

DISCUSSION

Crime stats are as follows:

Crimes Against Persons

For the month of December 2018, crimes against persons decreased by 48 crimes system-wide compared to the same period last year.

Crimes Against Property

For the month of December 2018, crimes against property decreased by 1 crime system-wide compared to the same period last year.

Crimes Against Society

For the month of December 2018, crimes against society increased by 8 crimes system-wide compared to the same period last year.

Bus Operator Assaults:

There were 5 bus operator assaults reported in December, which is 3 fewer operator assaults compared to the same period last year.

Average Emergency Response Times:

Emergency response times averaged 4.88 minutes for the month of December.

Physical Security Improvements:

The Systems Security and Law Enforcement division continues to provide a secure and safe environment for our patrons and employees. Our Metro Facility physical security assessment was completed, and the report was presented to key Metro leaders in Bus and Rail Operations, Information Technology and Facilities. The physical security assessment of Union Station started in August, and will conclude in February 2019.

We are working closely with the Los Angeles Police Department to develop a concept of the operations for the deployment of the Thruvision detection at range technology. We have had several meetings with the LAPD, and we continue to develop the procedures that will protect the public and Metro.

The Red Line ancillary area surge continues, and we are making progress with securing our underground rail stations. We are planning for the New Blue Line construction and the second Green Line tie-in operation in January 2019.

Metro's Homeless Efforts:

In spring 2016, Metro created the Metro Homeless Task Force to address the displaced persons that have turned to Metro system and property for alternative shelter. Out of the Task Force, Metro created the Metro Transit Homeless Action Plan which was presented to the Metro Board of Directors in February 2017. The Action Plan's goals are to enhance the customer experience, maintain a safe and secure system, and provide coordinated outreach. Components of the plan include Metro's coordination with County and City Measure H and Measure HHH. The plan also called for the hiring of two C3 teams (County, City, Community) through the County Department of Health Services as indicated by Metro's Board of Directors. The C3 teams are to provide coordinated and responsive outreach to the homeless and to ultimately get them in housing resources.

Metro's C3 Homeless Outreach Teams:

Metro's C3 Homeless Outreach teams' twelve-month pilot program began on May 22, 2017 with initial homeless outreach on the Red Line. Since the launch of Metro's C3 Homeless Outreach teams they have provided substantial homeless outreach-with 3,506 total unduplicated homeless contacts, 947 of whom have been linked to permanent housing solutions. In FY19 Metro expanded

the C3 teams from two to eight teams to cover rail, bus and Union Station. Currently, all there are 7 PATH teams deployed on the rail and at Union Station, hiring for bus deployment remains a challenge.

C3 Homeless Outreach October 1, 2018 through December 31, 2018:

Performance Measure	December Number Served	Project Year to date Number Served
Contacts with unduplicated individuals	295	4,052
Unduplicated individuals engaged	127	2,404
Unduplicated individuals provided services (obtaining vital documents, follow-up activities, transportation, CES packet, clinical assessment, etc.) or successful referral (supportive services, benefits linkage etc.)	160	1,563
Unduplicated individuals engaged who are successfully linked to an interim housing resource	58	588
Unduplicated individuals engaged who are linked to a permanent housing resource	6	289
Unduplicated individuals engaged who are permanently housed	6	70

C3 Coordination with Law Enforcement

With Metro System Security and Law Enforcement personnel as the lead, Metro's C3 teams coordinate with LAPD's Homeless Outreach and Protective Engagement (HOPE) Teams, LASD's Mental Evaluation Teams (MET), Long Beach PD, and Metro's Transit Security Officers, in an effort to engage the homeless and provide placement into services. These law enforcement entities provide gap service on the lines for homeless outreach when the C3 Teams are off duty or working another portion of the system.

Our current investment is slightly over \$5M annually for the C3 Outreach teams (40 personnel). We also added 10 full-time LAPD HOPE Officers; we've grown the LASD MET Teams from 6-10, and we've added 2 Quality of Life Officers to the Long Beach contract - all focused on homeless/mental illness interventions. In addition, we are working with a consultant to bring external partners into this problem-solving effort.

LAPD Homeless Referrals to Metro's C3 Teams for the Month of December 2018.

LAPD referred 16 homeless individuals to Metro's C3 Outreach teams resulting in:

- Two were placed in shelter.
- Three completed the CES HFH application

- One completed a Coordinated Entry System Packet only
- One completed the Housing for Health application
- One was permanently housed
- One was taken to the DMV and Social Security Office.
- One engaged with staff but denied shelter
- One was reconnected to Ascencia for services
- Two were taken to the hospital
- Two declined to speak with staff

Sheriff Mental Evaluation Team (MET) Contacts December 2, 2018 through January 5, 2019

These monthly statistics only include contacts of the Transit MET Units. They do not include contacts made by other Transit Services Bureau personnel. In addition to the below data:

- Transported 38 clients to other homeless outreach connection services.
- One team attended a Mental Health Update & Interaction with the Developmentally Disabled Training course on 12/05/18.
- One team attended MTA Light Rail training class on 12/08/18.
- 3 teams attended a meeting with Metro and Pivot Homeless Consultants team at USG on 12/13/18.
- 5 teams attended a Los Angeles County Mental Evaluation Teams training meeting, hosted by LASD Transit MET on 12/19/18.

December 2018 Law Enforcement Homeless Outreach

ACTION	LAPD HOPE	LASD MET	LBPB
Contacts	224	811	5
Referrals	64	496	3
5150 Holds	7	19	0
Mental Illness	33	248	3
Substance Abuse	75	202	0
Veterans	7	10	0
Shelter	11	16	0
Motel Housing Plan	1	0	0
VA Housing	1	0	0

Return to Family	3	0	0
Transitional Long Term Housing	4	1	0
Detox	0	1	0
Rehab	7	0	0

Metro's Encampment Protocol:

Metro has developed an encampment protocol to be applied to all of Metro properties. First priority will occur at employee interfacing encampment locations, Divisions 1 and 2, followed by the Orange Line.

Measure H Generalist:

Metro's Homeless Action Plan integrates itself into the work provided under Measures H and HHH. Part of the E6 Strategies of Measure H includes 40 additional outreach workers otherwise known as "generalists" to conduct outreach on government properties including Metro, and countywide parks, libraries, beaches and harbors. These generalists will not go past the fare gates and their data, per the county will not be extrapolated for Metro. However, these generalists will work with the C3 teams to provide outreach services.

Mental Health Outreach Workers:

Metro pilot program with the LA county Department of Mental Health will be launched pending County mental health outreach workers becoming available.

Metro Homeless Task Force

Metro hosted its quarterly Homeless Task force on December 12, 2018. Attendees included LA County, LA City, Metro personnel, business interests and elected staff.

2019 LAHSA Homeless Count

For the fourth year, Metro partnered with the Los Angeles Homeless Services Agency (LAHSA) and the United Way for the Greater Los Angeles Homeless Count. The count will assess the number of homeless individuals in LA County who are homeless. Metro's system was counted on January 25, 2019 at 5am. All Metro personnel were notified how they could volunteer to count the Metro system. Currently, data from the LAHSA Count is not specific to Metro, but instead is Service Planning Area (SPA) based.

ATTACHMENTS

Attachment A - System-Wide Law Enforcement Overview December 2018

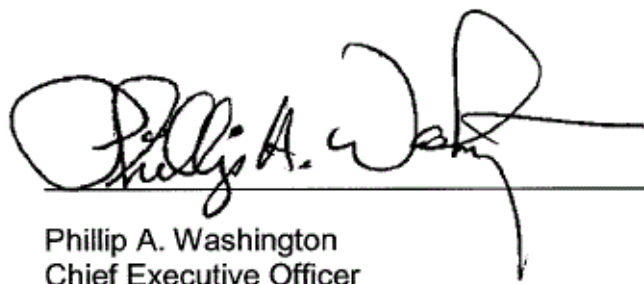
Attachment B - Detail by Rail Line December 2018

Attachment C - Key Performance Indicators December 2018

Attachment D - Transit Police Summary December 2018

Prepared by: Alex Z. Wiggins, Chief, System Security and Law Enforcement,
(213) 922-4433

Reviewed by: Phillip A. Washington, Chief Executive Officer, (213) 922-7555



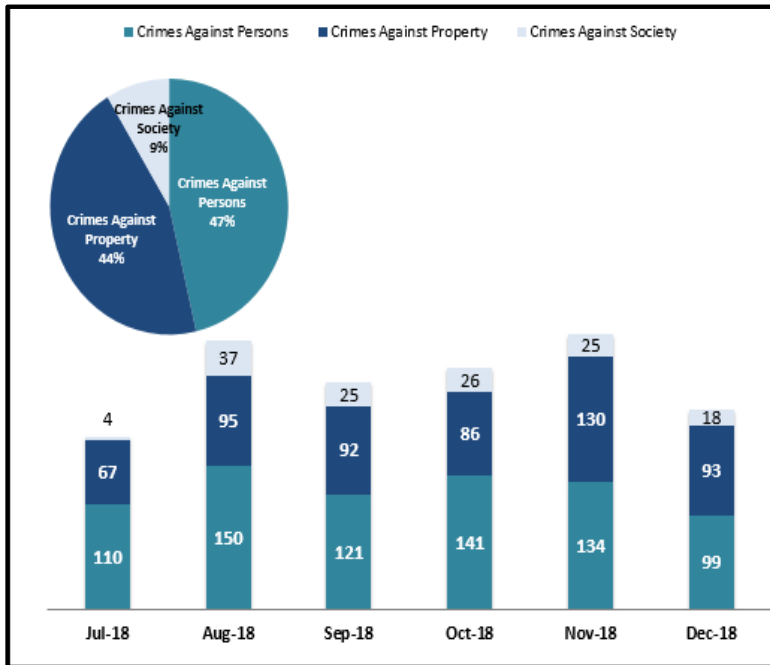
Phillip A. Washington
Chief Executive Officer

SYSTEM-WIDE LAW ENFORCEMENT OVERVIEW

DECEMBER 2018

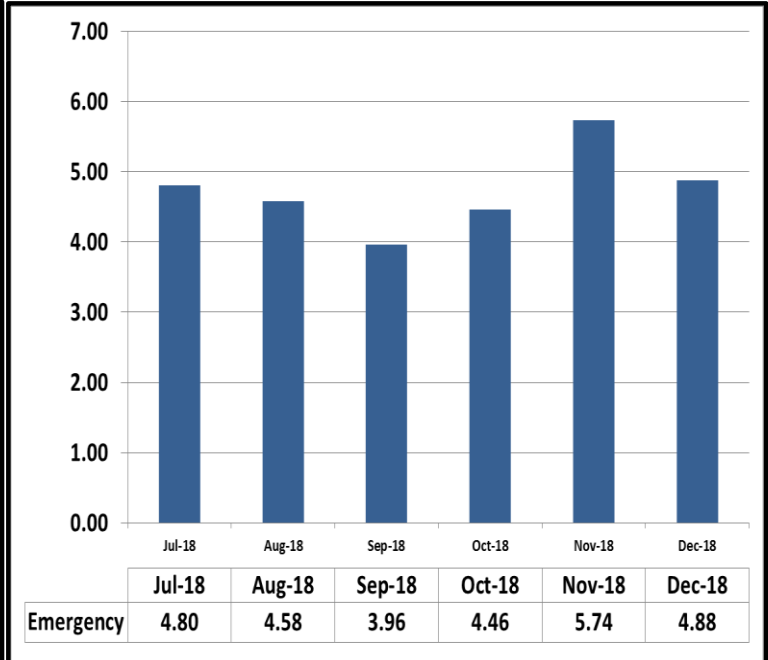
Attachment A

Crimes Against Persons, Property, and Society



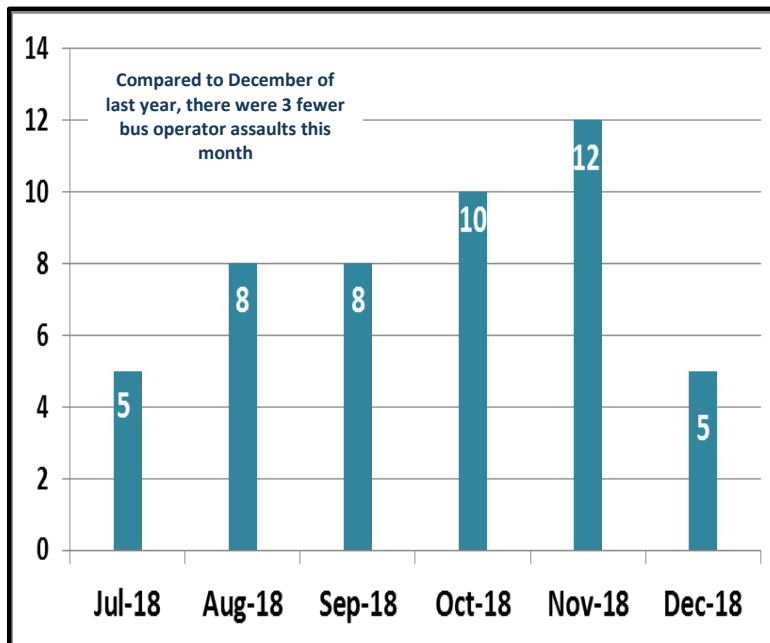
When compared to the same period last year, Crimes Against Persons decreased by 48 crimes, Crimes Against Property decreased by 1 crime, and Crimes Against Society increased by 8 crimes.

Average Emergency Response Times

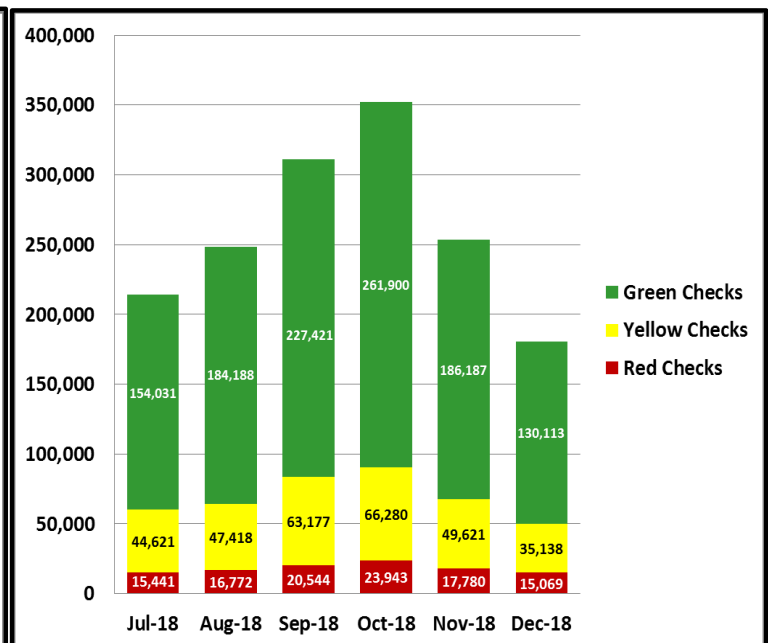


Average emergency response time was 4.88 mins.

Bus Operator Assaults



Fare Compliance



Green Checks- Occurs when a patron has valid fare

Yellow Checks- Occurs when a patron has valid fare, but did not tap at transfer station

Red Checks- Occurs when a patron has invalid fare

MONTHLY UPDATE ON TRANSIT POLICING PERFORMANCE - DECEMBER 2018

REPORTED CRIME				
PART 1 CRIMES	LAPD	LASD	LBPB	FYTD
Homicide	0	0	0	0
Rape	0	0	0	0
Robbery	3	1	3	34
Aggravated Assault	1	1	0	26
Aggravated Assault on Operator	0	0	0	0
Burglary	0	0	0	2
Larceny	2	4	5	58
Bike Theft	0	1	0	4
Motor Vehicle Theft	0	2	1	7
Arson	0	0	0	0
Other	0	0	0	5
SUB-TOTAL	6	9	9	136
Selected Part 2 Crimes				
Battery	3	0	1	44
Battery Rail Operator	0	0	0	3
Sex Offenses	0	0	0	3
Weapons	0	2	0	11
Narcotics	0	3	1	55
Trespassing	0	1	0	6
Vandalism	0	2	0	13
Other	0	0	2	2
SUB-TOTAL	3	8	4	137
TOTAL	9	17	13	273

PART 1 CRIMES PER STATION		
Station	DECEMBER	FYTD
7th/Metro	2	3
Pico	2	3
Grand	0	3
San Pedro	0	3
Washington	1	4
Vernon	0	3
Slauson	0	9
Florence	0	7
Firestone	2	11
103rd St	1	6
Willowbrook	3	16
Compton	1	19
Artesia	3	9
Del Amo	0	8
Wardlow	5	11
Willow	1	8
PCH	0	0
Anaheim	1	3
5th St	0	2
1st St	1	1
Downtown Long Beach	0	2
Pacific	1	4
Rail Yard	0	1
Total	24	136

	LAPD	LASD	LBPB	TOTAL
CRIMES AGAINST PERSONS	7	2	4	13
CRIMES AGAINST PROPERTY	2	9	8	19
CRIMES AGAINST SOCIETY	0	6	1	7
DECEMBER 2018 TOTAL	9	17	13	39

ARRESTS				
AGENCY	LAPD	LASD	LBPB	FYTD
Felony	0	9	10	141
Misdemeanor	2	63	45	680
TOTAL	2	72	55	821

CITATIONS				
AGENCY	LAPD	LASD	LBPB	FYTD
Other Citations	8	95	27	724
Vehicle Code Citations	1	8	113	694
TOTAL	9	103	140	1,418

CALLS FOR SERVICE				
AGENCY	LAPD	LASD	LBPB	FYTD
Routine	N/A*	42	6	384
Priority	N/A*	80	47	878
Emergency	N/A*	18	31	343
TOTAL	0	140	84	1,605
*Currently unable to report stats by Rail Line				

DISPATCHED VS. PROACTIVE			
AGENCY	LAPD	LASD	LBPB
Dispatched	19%	3%	5.66%
Proactive	81%	97%	94.34%
TOTAL	100%	100%	100%

PERCENTAGE OF TIME SPENT ON THE RAIL SYSTEM	
LINE	DECEMBER
Blue Line-LAPD	90%
Blue Line-LASD	82%
Blue Line-LBPB	70%

GRADE CROSSING OPERATIONS				
LOCATION	LAPD	LASD	LBPB	FYTD
Washington St	26			326
Flower St	18			99
103rd St	2			27
Wardlow Rd			3	22
Pacific Ave.				1
Willowbrook		31		267
Slauson		1		23
Firestone		4		25
Florence		6		64
Compton		19		154
Artesia		27		121
Del Amo		8		97
Long Beach Blvd				0
TOTAL	46	96	3	1,226

LEGEND
Los Angeles Police Department
Los Angeles County Sheriff's Department
Long Beach Police Department

Blue Line Highlights
The Blue Line had 4 more Part 1 crimes than the same period last year (20), which resulted in a 20% increase

GREEN LINE

ATTACHMENT B

MONTHLY UPDATE ON TRANSIT POLICING PERFORMANCE - DECEMBER 2018

REPORTED CRIME			
PART 1 CRIMES	LAPD	LASD	FYTD
Homicide	0	0	0
Rape	0	0	0
Robbery	0	2	18
Aggravated Assault	0	1	6
Aggravated Assault on Operator	0	0	0
Burglary	0	0	0
Larceny	0	2	21
Bike Theft	0	0	0
Motor Vehicle Theft	0	1	4
Arson	0	0	0
SUB-TOTAL	0	6	49
Selected Part 2 Crimes			
Battery	1	1	15
Battery Rail Operator	0	0	0
Sex Offenses	1	3	7
Weapons	0	1	7
Narcotics	0	1	17
Trespassing	0	0	0
Vandalism	0	0	6
SUB-TOTAL	2	6	52
TOTAL	2	12	101

PART 1 CRIMES PER STATION		
Station	DECEMBER	FYTD
Redondo Beach	0	2
Douglas	0	1
El Segundo	0	0
Mariposa	0	0
Aviation	0	1
Hawthorne	0	2
Crenshaw	1	3
Vermont	1	8
Harbor	0	2
Avalon	0	6
Willowbrook	0	5
Long Beach	3	10
Lakewood	0	6
Norwalk	1	3
Total	6	49

	LAPD	LASD	TOTAL
CRIMES AGAINST PERSONS	2	7	9
CRIMES AGAINST PROPERTY	0	3	3
CRIMES AGAINST SOCIETY	0	2	2
DECEMBER 2018 TOTAL	2	12	14

ARRESTS			
AGENCY	LAPD	LASD	FYTD
Felony	0	6	45
Misdemeanor	1	20	169
TOTAL	1	26	214

CITATIONS			
AGENCY	LAPD	LASD	FYTD
Other Citations	0	34	230
Vehicle Code Citations	0	4	78
TOTAL	0	38	308

CALLS FOR SERVICE			
AGENCY	LAPD	LASD	FYTD
Routine	N/A*	140	852
Priority	N/A*	53	383
Emergency	N/A*	5	59
TOTAL	0	198	1294
*Currently unable to report stats by Rail Line			

DISPATCHED VS. PROACTIVE		
AGENCY	LAPD	LASD
Dispatched	18%	8%
Proactive	82%	92%
TOTAL	100%	100%

PERCENTAGE OF TIME SPENT ON THE RAIL SYSTEM	
LINE	DECEMBER
Green Line-LAPD	88%
Green Line-LASD	81%

LEGEND	
Los Angeles County Sheriff's Department	
Los Angeles County Sheriff's Department	

Green Line Highlights

The Green Line had 1 fewer Part 1 crimes than the same period last year (7), which resulted in a 14.3% decrease

EXPO LINE

ATTACHMENT B

MONTHLY UPDATE ON TRANSIT POLICING PERFORMANCE - DECEMBER 2018

REPORTED CRIME			
PART 1 CRIMES	LAPD	LASD	FYTD
Homicide	0	0	0
Rape	4	0	5
Robbery	0	0	21
Aggravated Assault	0	1	15
Aggravated Assault on Operator	0	0	0
Burglary	0	0	2
Larceny	14	1	86
Bike Thefts	0	2	23
Motor Vehicle Theft	0	0	0
Arson	0	0	0
SUB-TOTAL	18	4	152
Selected Part 2 Crimes			
Battery	0	1	41
Battery Rail Operator	0	0	0
Sex Offenses	2	1	9
Weapons	0	0	1
Narcotics	0	0	1
Trespassing	1	0	1
Vandalism	1	0	10
SUB-TOTAL	4	2	63
TOTAL	22	6	215

PART 1 CRIMES PER STATION		
Station	DECEMBER	FYTD
7th/Metro	0	5
Pico	1	4
23rd St	0	2
Jefferson/USC	1	9
Expo/USC	1	12
Expo/Vermont	1	14
Expo/Western	4	23
Expo/Crenshaw	3	13
Farmdale	0	5
La Brea	0	9
La Cienega	6	10
Culver City	1	7
Palms	0	4
Expo/Westwood	1	9
Expo/Sepulveda	0	4
Expo/Bundy	0	5
26th St /Bergamot	0	4
17th St/SMC	1	5
D/T Santa Monica	2	8
Expo Rail Yard	0	0
Total	22	152

	LAPD	LASD	TOTAL
CRIMES AGAINST PERSONS	6	3	9
CRIMES AGAINST PROPERTY	15	3	18
CRIMES AGAINST SOCIETY	1	0	1
DECEMBER 2018 TOTAL	22	6	28

ARRESTS			
AGENCY	LAPD	LASD	FYTD
Felony	1	1	13
Misdemeanor	5	1	29
TOTAL	6	2	42

CITATIONS			
AGENCY	LAPD	LASD	FYTD
Other Citations	29	1	142
Vehicle Code Citations	9	1	31
TOTAL	38	2	173

CALLS FOR SERVICE			
AGENCY	LAPD	LASD	FYTD
Routine	N/A*	42	282
Priority	N/A*	27	151
Emergency	N/A*	2	16
TOTAL	0	71	449
*Currently unable to report stats by Rail Line			

DISPATCHED VS. PROACTIVE		
AGENCY	LAPD	LASD
Dispatched	18%	8%
Proactive	82%	92%
TOTAL	100%	100%

PERCENTAGE OF TIME SPENT ON THE RAIL SYSTEM	
LINE	DECEMBER
Expo Line-LAPD	90%
Expo Line-LASD	84%

GRADE CROSSING OPERATIONS			
LOCATION	LAPD	LASD	FYTD
Exposition Blvd	317		1,307
Santa Monica		17	159
Culver City		1	31
TOTAL	317	18	1,497

LEGEND	
Los Angeles Police Department	
Los Angeles County Sheriff's Department	

Expo Line Highlights

The Expo Line had 8 fewer Part 1 crimes than the same period last year (30), which resulted in a 26.7% decrease

MONTHLY UPDATE ON TRANSIT POLICING PERFORMANCE - DECEMBER 2018

REPORTED CRIME		
PART 1 CRIMES	LAPD	FYTD
Homicide	0	0
Rape	0	1
Robbery	3	31
Aggravated Assault	9	39
Aggravated Assault on Operator	0	1
Burglary	0	0
Larceny	16	98
Bike Theft	2	3
Motor Vehicle Theft	0	0
Arson	0	0
SUB-TOTAL	30	173
Selected Part 2 Crimes		
Battery	7	91
Battery Rail Operator	1	1
Sex Offenses	0	11
Weapons	0	0
Narcotics	0	0
Trespassing	0	7
Vandalism	0	5
SUB-TOTAL	8	115
TOTAL	38	288

PART 1 CRIMES PER STATION		
Station	DECEMBER	FYTD
Union Station	7	20
Civic Center	1	5
Pershing Square	2	17
7th/Metro	1	20
Westlake	6	27
Wilshire/Vermont	1	14
Wilshire/Normandie	0	1
Vermont/Beverly	1	5
Wilshire/Western	0	2
Vermont/Santa Monica	3	8
Vermont/Sunset	0	2
Hollywood/Western	1	8
Hollywood/Vine	4	18
Hollywood/Highland	1	7
Universal	0	5
North Hollywood	2	14
Red Line Rail Yard	0	0
Total	30	173

	LAPD	TOTAL
CRIMES AGAINST PERSONS	20	20
CRIMES AGAINST PROPERTY	18	18
CRIMES AGAINST SOCIETY	0	0
DECEMBER 2018 TOTAL	38	38

ARRESTS		
AGENCY	LAPD	FYTD
Felony	3	19
Misdemeanor	4	31
TOTAL	7	50

CITATIONS		
AGENCY	LAPD	FYTD
Other Citations	46	187
Vehicle Code Citations	5	44
TOTAL	51	231

CALLS FOR SERVICE	
AGENCY	LAPD
Routine	N/A*
Priority	N/A*
Emergency	N/A*
TOTAL	
*Currently unable to report stats by Rail Line	

DISPATCHED VS. PROACTIVE	
AGENCY	LAPD
Dispatched	25%
Proactive	75%
TOTAL	100%

PERCENTAGE OF TIME SPENT ON THE RAIL SYSTEM	
LINE	DECEMBER
Red Line- LAPD	88%

LEGEND
Los Angeles Police Department

<p>Red Line Highlights</p> <p>The Red Line had 2 more Part 1 crimes than the same period last year (28), which resulted in a 7.1% increase</p>
--

MONTHLY UPDATE ON TRANSIT POLICING PERFORMANCE - DECEMBER 2018

REPORTED CRIME			
PART 1 CRIMES	LAPD	LASD	FYTD
Homicide	0	0	1
Rape	0	0	0
Robbery	1	0	3
Aggravated Assault	0	0	11
Aggravated Assault on Operator	0	0	0
Burglary	0	0	1
Larceny	0	1	22
Bike Theft	1	2	8
Motor Vehicle Theft	0	0	5
Arson	0	0	0
SUB-TOTAL	2	3	51
Selected Part 2 Crimes			
Battery	2	0	14
Battery Rail Operator	0	0	0
Sex Offenses	0	0	0
Weapons	0	0	0
Narcotics	0	0	1
Trespassing	0	0	0
Vandalism	0	0	8
SUB-TOTAL	2	0	23
TOTAL	4	3	74

PART 1 CRIMES PER STATION		
Station	DECEMBER	FYTD
APU/Citrus College	1	4
Azusa Downtown	0	1
Irwindale	0	1
Duarte	0	5
Monrovia	1	5
Arcadia	0	1
Sierra Madre	0	4
Allen	0	0
Lake	0	1
Memorial Park	0	1
Del Mar	0	0
Fillmore	0	1
South Pasadena	0	0
Highland Park	0	0
SW Museum	0	2
Heritage Square	0	1
Lincoln Heights	0	3
Chinatown	0	0
Union Station	0	5
Little Tokyo	0	2
Pico/Aliso	0	1
Mariachi	1	3
Soto	1	2
Indiana (both LAPD & LASD)	1	4
Maravilla	0	0
East LA	0	0
Atlantic	0	4
Total	5	51

	LAPD	LASD	TOTAL
CRIMES AGAINST PERSONS	3	0	3
CRIMES AGAINST PROPERTY	1	3	4
CRIMES AGAINST SOCIETY	0	0	0
DECEMBER 2018 TOTAL	4	3	7

ARRESTS			
AGENCY	LAPD	LASD	FYTD
Felony	1	0	13
Misdemeanor	3	1	24
TOTAL	4	1	37

CITATIONS			
AGENCY	LAPD	LASD	FYTD
Other Citations	0	3	73
Vehicle Code Citations	1	1	86
TOTAL	1	4	159

CALLS FOR SERVICE			
AGENCY	LAPD	LASD	FYTD
Routine	N/A*	56	397
Priority	N/A*	96	491
Emergency	N/A*	4	55
TOTAL	0	156	943
*Currently unable to report stats by Rail Line			

DISPATCHED VS. PROACTIVE		
AGENCY	LAPD	LASD
Dispatched	20%	2%
Proactive	80%	98%
TOTAL	100%	100%

PERCENTAGE OF TIME SPENT ON THE RAIL SYSTEM	
LINE	DECEMBER
Gold Line-LAPD	89%
Gold Line-LASD	76%

GRADE CROSSING OPERATIONS			
LOCATION	LAPD	LASD	FYTD
Marmion Way	151		850
Arcadia Station		2	38
Irwindale		1	16
Monrovia		4	41
City of Pasadena		25	194
Magnolia Ave			0
Duarte Station		2	14
City Of Azusa		7	37
South Pasadena		9	73
City Of East LA		6	91
Figuerroa St			193
TOTAL GOAL= 10	151	56	1547

LEGEND	
Los Angeles Police Department	
Los Angeles County Sheriff's Department	

Gold Line Highlights	
The Gold Line had 4 fewer Part 1 crimes than the same period last year (9), which resulted in a 44.4% decrease	

MONTHLY UPDATE ON TRANSIT POLICING PERFORMANCE - DECEMBER 2018

REPORTED CRIME		
PART 1 CRIMES	LAPD	FYTD
Homicide	0	0
Rape	0	0
Robbery	0	3
Aggravated Assault	0	8
Aggravated Assault on Operator	0	1
Burglary	0	0
Larceny	0	8
Bike Theft	1	2
Motor Vehicle Theft	0	0
Arson	0	0
SUB-TOTAL	1	22
Selected Part 2 Crimes		
Battery	3	8
Battery Bus Operator	0	1
Sex Offenses	0	0
Weapons	0	0
Narcotics	0	0
Trespassing	0	0
Vandalism	1	6
SUB-TOTAL	4	15
TOTAL	5	37

PART 1 CRIMES PER STATION		
Station	DECEMBER	FYTD
North Hollywood	0	3
Laurel Canyon	0	0
Valley College	0	0
Woodman	0	0
Van Nuys	1	6
Sepulveda	0	2
Woodley	0	1
Balboa	0	2
Reseda	0	2
Tampa	0	0
Pierce College	0	0
De Soto	0	1
Canoga	0	3
Warner Center	0	0
Sherman Way	0	0
Roscoe	0	0
Nordhoff	0	1
Chatsworth	0	1
Total	1	22

	LAPD	TOTAL
CRIMES AGAINST PERSONS	3	3
CRIMES AGAINST PROPERTY	2	2
CRIMES AGAINST SOCIETY	0	0
DECEMBER 2018 TOTAL	5	5

ARRESTS		
AGENCY	LAPD	FYTD
Felony	0	1
Misdemeanor	0	11
TOTAL	0	12

CITATIONS		
AGENCY	LAPD	FYTD
Other Citations	414	2,215
Vehicle Code Citations	354	1,700
TOTAL	768	3,915

CALLS FOR SERVICE		
AGENCY	LAPD	FYTD
Routine	N/A*	N/A*
Priority	N/A*	N/A*
Emergency	N/A*	N/A*
TOTAL	0	0
*Currently unable to report stats by Bus Rapid Transit Line		

DISPATCHED VS. PROACTIVE	
AGENCY	LAPD
Dispatched	13%
Proactive	87%
TOTAL	100%

PERCENTAGE OF TIME SPENT ON THE BUS SYSTEM	
LINE	DECEMBER
Orange Line- LAPD	90%

LEGEND	
Los Angeles Police Department	

Orange Line Highlights	
The Orange Line had 1 more Part 1 crimes than the same period last year (0), which resulted in a 100% increase	

MONTHLY UPDATE ON TRANSIT POLICING PERFORMANCE - DECEMBER 2018

REPORTED CRIME			
PART 1 CRIMES	LAPD	LASD	FYTD
Homicide	0	0	0
Rape	0	0	0
Robbery	0	0	2
Aggravated Assault	0	0	1
Aggravated Assault on Operator	0	0	0
Burglary	0	0	0
Larceny	1	0	2
Bike Theft	0	0	2
Motor Vehicle Theft	0	0	0
Arson	0	0	0
SUB-TOTAL	1	0	7
Selected Part 2 Crimes			
Battery	2	0	5
Battery Bus Operator	0	0	0
Sex Offenses	0	0	0
Weapons	0	0	0
Narcotics	0	0	0
Trespassing	0	0	0
Vandalism	0	0	2
SUB-TOTAL	2	0	7
TOTAL	3	0	14

PART 1 CRIMES PER STATION		
Station	DECEMBER	FYTD
El Monte	0	0
Cal State LA	0	0
LAC/USC	0	0
Alameda	0	0
Downtown	0	1
37th St/USC	0	1
Slauson	0	1
Manchester	0	1
Harbor Fwy	0	0
Rosecrans	0	1
Harbor/Gateway	0	0
Carson	0	0
PCH	0	1
San Pedro	1	1
Total	1	7

	LAPD	LASD	TOTAL
CRIMES AGAINST PERSONS	2	0	2
CRIMES AGAINST PROPERTY	1	0	1
CRIMES AGAINST SOCIETY	0	0	0
DECEMBER 2018 TOTAL	3	0	3

ARRESTS			
AGENCY	LAPD	LASD	FYTD
Felony	0	0	5
Misdemeanor	4	0	24
TOTAL	4	0	29

CITATIONS			
AGENCY	LAPD	LASD	FYTD
Other Citations	411	0	2,199
Vehicle Code Citations	394	0	2,091
TOTAL	805	0	4,290

CALLS FOR SERVICE			
AGENCY	LAPD	LASD	FYTD
Routine	N/A*	0	0
Priority	N/A*	4	8
Emergency	N/A*	0	1
TOTAL	0	4	9

*Currently unable to report stats by Bus Rapid Transit Line

DISPATCHED VS. PROACTIVE		
AGENCY	LAPD	LASD
Dispatched	14%	0%
Proactive	86%	100%
TOTAL	100%	100%

PERCENTAGE OF TIME SPENT ON THE BUS SYSTEM	
LINE	DECEMBER
Silver Line- LAPD	91%
Silver Line- LASD	82%

LEGEND	
Los Angeles Police Department	
Los Angeles County Sheriff's Department	

Silver Line Highlights	
The Silver Line had the same number of Part 1 crimes as the same period last year (1)	

MONTHLY UPDATE ON TRANSIT POLICING PERFORMANCE - DECEMBER 2018

REPORTED CRIME			
PART 1 CRIMES	LASD	LAPD	FYTD
Homicide	0	0	0
Rape	0	0	0
Robbery	1	5	46
Aggravated Assault	0	4	48
Aggravated Assault on Operator	1	0	9
Burglary	0	0	2
Larceny	2	14	91
Bike Theft	0	0	14
Motor Vehicle Theft	0	0	1
Arson	0	0	0
SUB-TOTAL	4	23	211
Selected Part 2 Crimes			
Battery	0	17	108
Battery Bus Operator	1	2	34
Sex Offenses	1	3	19
Weapons	2	0	8
Narcotics	4	0	32
Trespassing	0	0	5
Vandalism	1	1	21
SUB-TOTAL	9	23	227
TOTAL	13	46	438

	LASD	LAPD	TOTAL
CRIMES AGAINST PERSONS	4	31	35
CRIMES AGAINST PROPERTY	3	15	18
CRIMES AGAINST SOCIETY	6	0	6
DECEMBER 2018 TOTAL	13	46	59

LASD's Part 1 Crimes per Sector		
Sector	DECEMBER	FYTD
Westside	0	8
San Fernando	0	0
San Gabriel Valley	1	8
Gateway Cities	2	10
South Bay	1	6
Total	4	32

LAPD's Part 1 Crimes per Sector		
Sector	DECEMBER	FYTD
Valley Bureau		
Van Nuys	1	4
West Valley	0	1
North Hollywood	0	4
Foothill	0	2
Devonshire	0	0
Mission	0	1
Topanga	0	3
Central Bureau		
Central	1	13
Rampart	0	7
Hollenbeck	0	1
Northeast	2	3
Newton	1	9
West Bureau		
Hollywood	0	4
Wilshire	3	10
West LA	1	3
Pacific	0	1
Olympic	1	17
Southwest Bureau		
Southwest	9	49
Harbor	0	2
77th Street	4	40
Southeast	0	5
Total	23	179
Total Part 1 Crimes	27	211

ARRESTS			
AGENCY	LASD	LAPD	FYTD
Felony	3	3	37
Misdemeanor	25	1	151
TOTAL	28	4	188

CITATIONS			
AGENCY	LASD	LAPD	FYTD
Other Citations	16	13	148
Vehicle Code Citations	16	0	146
TOTAL	32	13	294

CALLS FOR SERVICE			
AGENCY	LASD	LAPD	FYTD
Routine	51	3	745
Priority	122	20	1,332
Emergency	15	2	159
TOTAL	188	25	2,236

DISPATCHED VS. PROACTIVE		
AGENCY	LASD	LAPD
Dispatched	1%	17%
Proactive	99%	83%
TOTAL	100%	100%

PERCENTAGE OF TIME SPENT ON THE BUS SYSTEM	
LINE	DECEMBER
LASD BUS	78%
LAPD BUS	90%

LEGEND	
Los Angeles Police Department	
Los Angeles County Sheriff's Department	

Bus Patrol
There were 6 fewer Part 1 crimes than the same period last year (33), which resulted in a 18.2% decrease

UNION STATION

ATTACHMENT B

MONTHLY UPDATE ON TRANSIT POLICING PERFORMANCE - DECEMBER 2018

REPORTED CRIME		
PART 1 CRIMES	LAPD	FYTD
Homicide	0	0
Rape	0	0
Robbery	3	6
Aggravated Assault	2	10
Aggravated Assault on Operator	0	0
Burglary	0	1
Larceny	10	38
Bike Theft	0	5
Motor Vehicle Theft	0	0
Arson	0	0
SUB-TOTAL	15	60
Selected Part 2 Crimes		
Battery	0	22
Battery Rail Operator	0	0
Sex Offenses	0	4
Weapons	0	0
Narcotics	0	0
Trespassing	2	7
Vandalism	0	5
SUB-TOTAL	2	38
TOTAL	17	98

	LAPD	TOTAL
CRIMES AGAINST PERSONS	5	5
CRIMES AGAINST PROPERTY	10	10
CRIMES AGAINST SOCIETY	2	2
DECEMBER 2018 TOTAL	17	17



Westside

Eastside

ARRESTS		
AGENCY	LAPD	FYTD
Felony	5	14
Misdemeanor	6	33
TOTAL	11	47

CITATIONS		
AGENCY	LAPD	FYTD
Other Citations	3	44
Vehicle Code Citations	0	16
TOTAL	3	60

CALLS FOR SERVICE		
AGENCY	LAPD	FYTD
Routine	N/A*	N/A*
Priority	N/A*	N/A*
Emergency	N/A*	N/A*
TOTAL	0	0
*Currently unable to report stats by Union Station		

DISPATCHED VS. PROACTIVE	
AGENCY	LAPD
Dispatched	24%
Proactive	76%
TOTAL	100%

PERCENTAGE OF TIME SPENT AT UNION STATION	
LOCATION	LAPD
Union Station	83%

LEGEND
Los Angeles Police Department

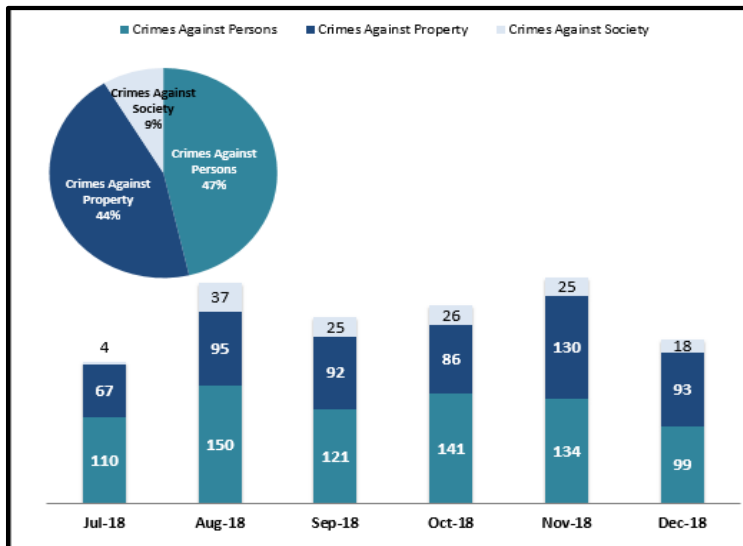
Union Station Highlights
Union Station had 8 more Part 1 crimes than the same period last year (7), which resulted in a 114% increase

KEY PERFORMANCE INDICATORS

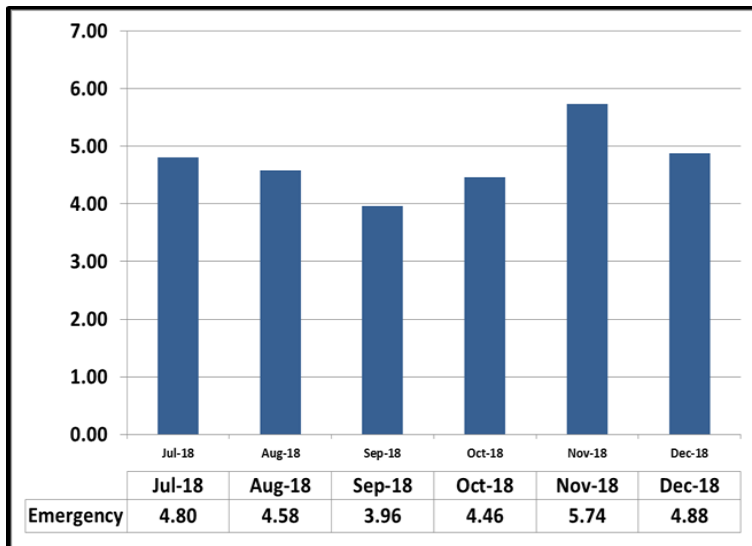
DECEMBER 2018

Attachment C

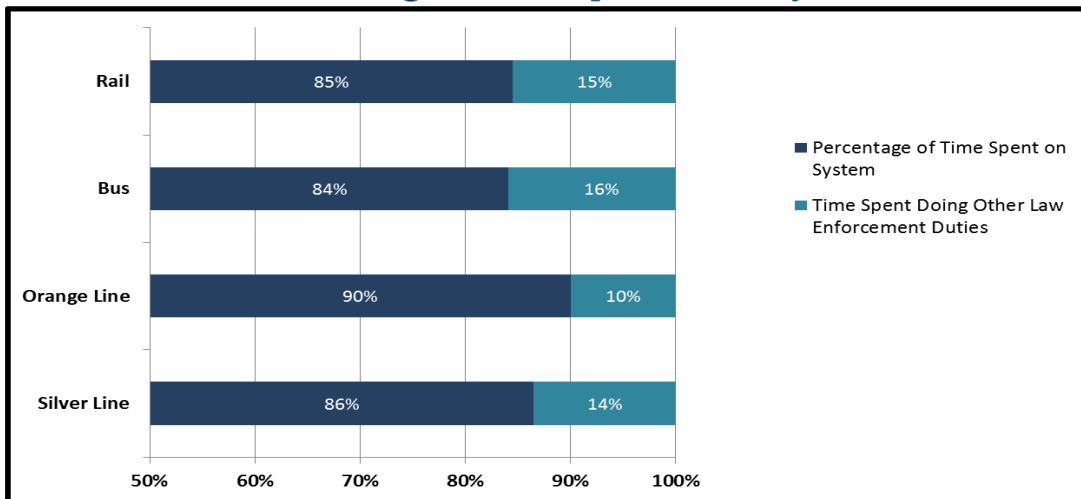
Crimes Against Persons, Property, and Society



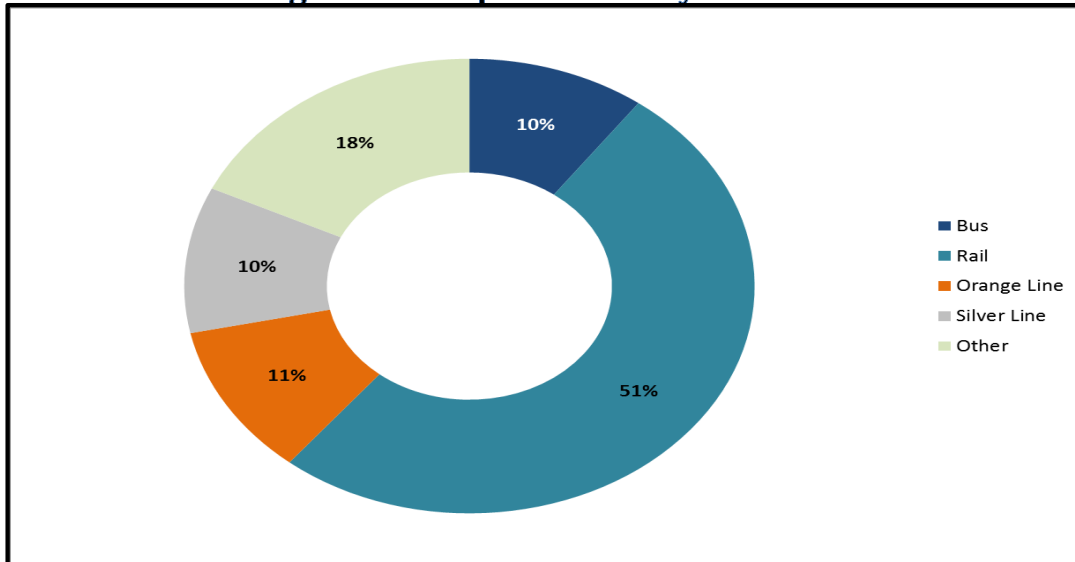
Average Emergency Response Times



Percentage of Time Spent on the System



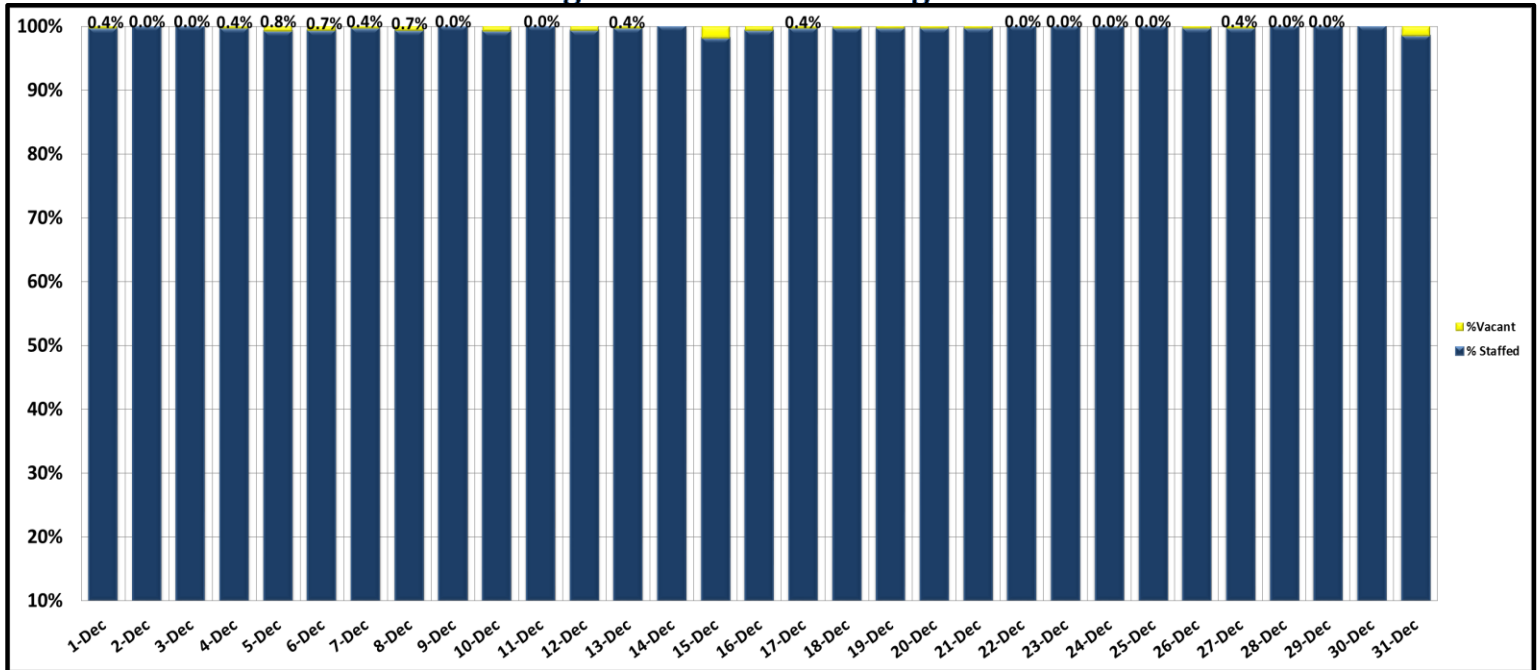
Percentage of Time Spent on the System as a Whole



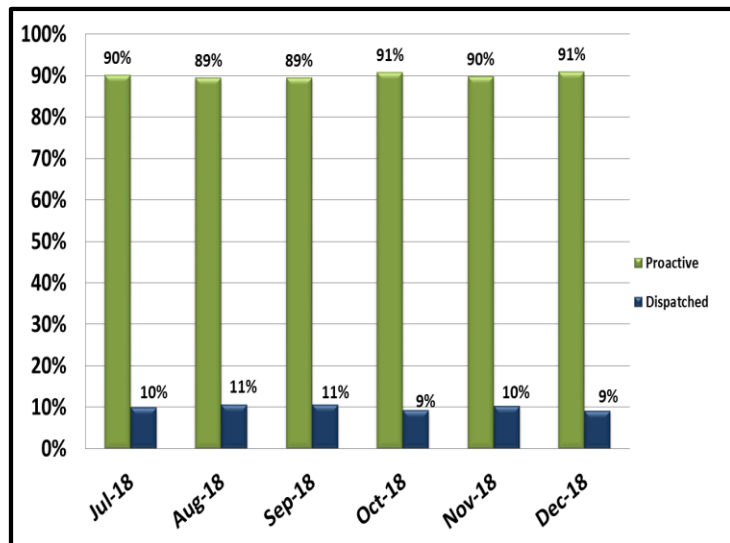
KEY PERFORMANCE INDICATORS

DECEMBER 2018

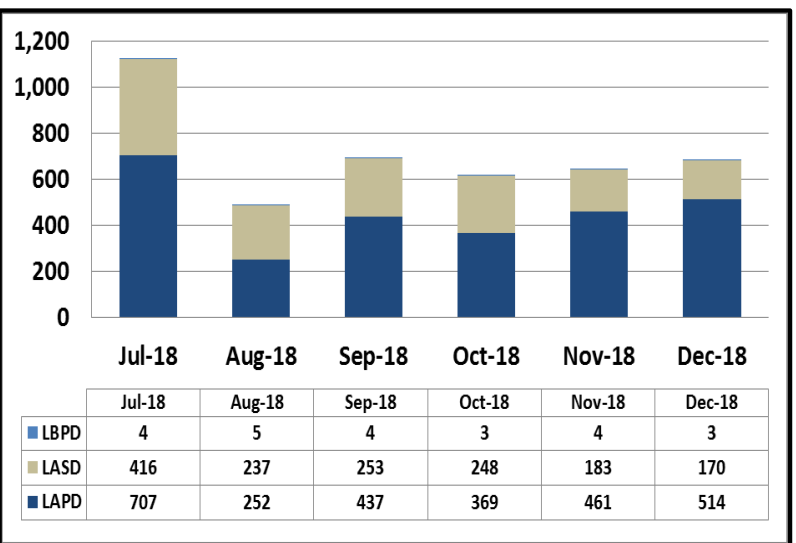
Ratio of Staffing Levels vs Vacant Assignments



Ratio of Proactive vs Dispatched Activity



Grade Crossing Operations



Grade Crossing Operation Locations December:

1. Blue Line Stations (145)
2. Expo Line Stations (335)
3. Gold Line Stations (207)

Transit Police

Monthly Crime Report



Attachment D

	2017	2018
	December	December
CRIMES AGAINST PERSONS		
Homicide	0	0
Rape	1	4
Robbery	35	22
Aggravated Assault	21	19
Aggravated Assault on Operator	0	1
Battery	66	38
Battery Rail Operator	8	4
Sex Offenses	16	11
SUB-TOTAL	147	99
CRIMES AGAINST PROPERTY		
Burglary	1	0
Larceny	68	72
Bike Theft	7	9
Motor Vehicle Theft	3	4
Arson	0	0
Other	0	2
Vandalism	15	6
SUB-TOTAL	94	93
CRIMES AGAINST SOCIETY		
Weapons	5	5
Narcotics	4	9
Trespassing	1	4
SUB-TOTAL	10	18
TOTAL	251	210
ENFORCEMENT EFFORTS		
Arrests	181	223
Citations	1,840	2,007
Fare Checks	336,635	180,320
Calls for Service	1,447	866

December 2018 Transit Policing Performance Summary

February 21, 2019

Operations, Safety and Customer Experience Committee

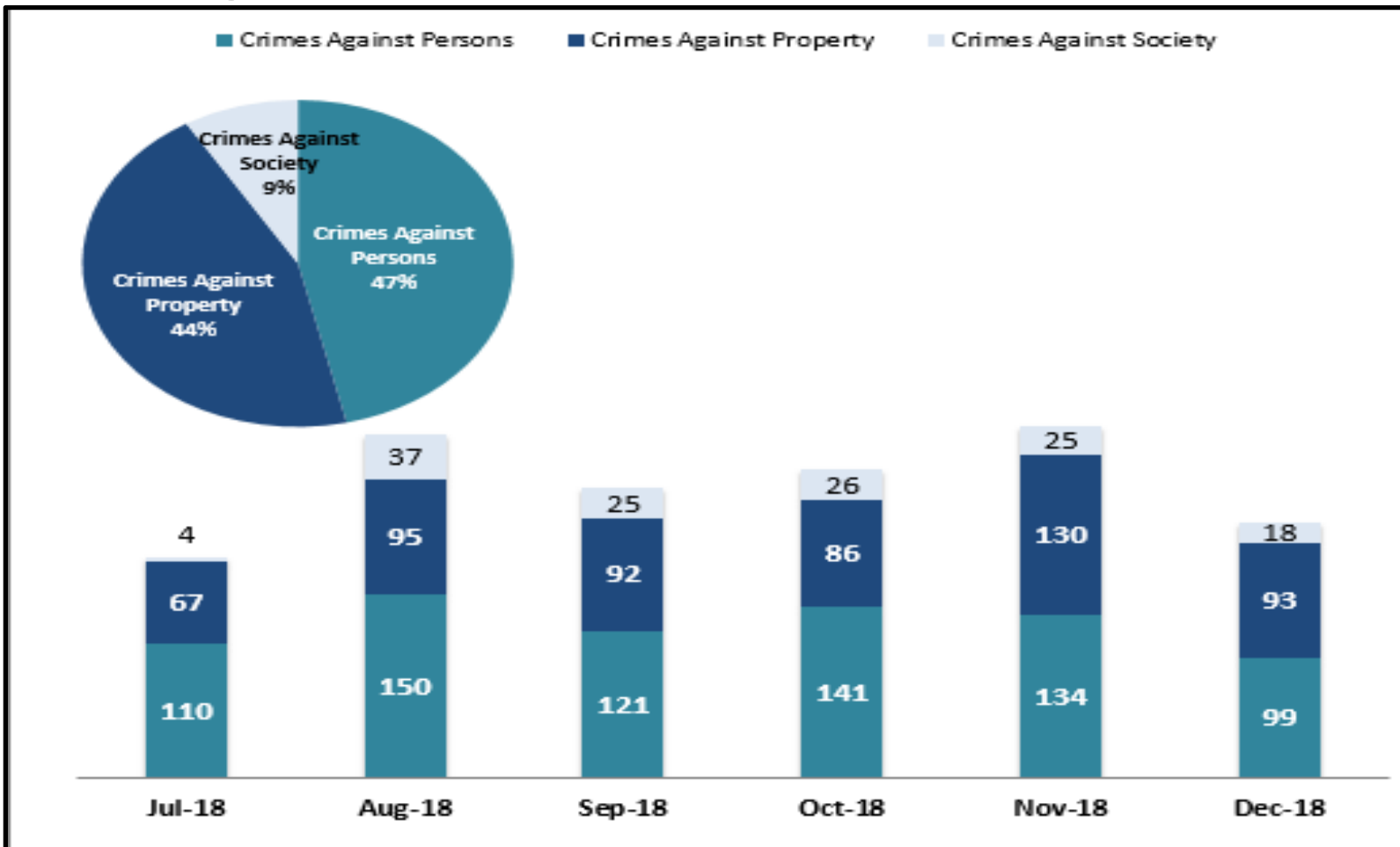


Key Performance Indicators

	2017	2018
	December	December
CRIMES AGAINST PERSONS		
Homicide	0	0
Rape	1	4
Robbery	35	22
Aggravated Assault	21	19
Aggravated Assault on Operator	0	1
Battery	66	38
Battery Rail Operator	8	4
Sex Offenses	16	11
SUB-TOTAL	147	99
CRIMES AGAINST PROPERTY		
Burglary	1	0
Larceny	68	72
Bike Theft	7	9
Motor Vehicle Theft	3	4
Arson	0	0
Other	0	2
Vandalism	15	6
SUB-TOTAL	94	93
CRIMES AGAINST SOCIETY		
Weapons	5	5
Narcotics	4	9
Trespassing	1	4
SUB-TOTAL	10	18
TOTAL	251	210
ENFORCEMENT EFFORTS		
Arrests	181	223
Citations	1,840	2,007
Fare Checks	336,635	180,320
Calls for Service	1,447	866

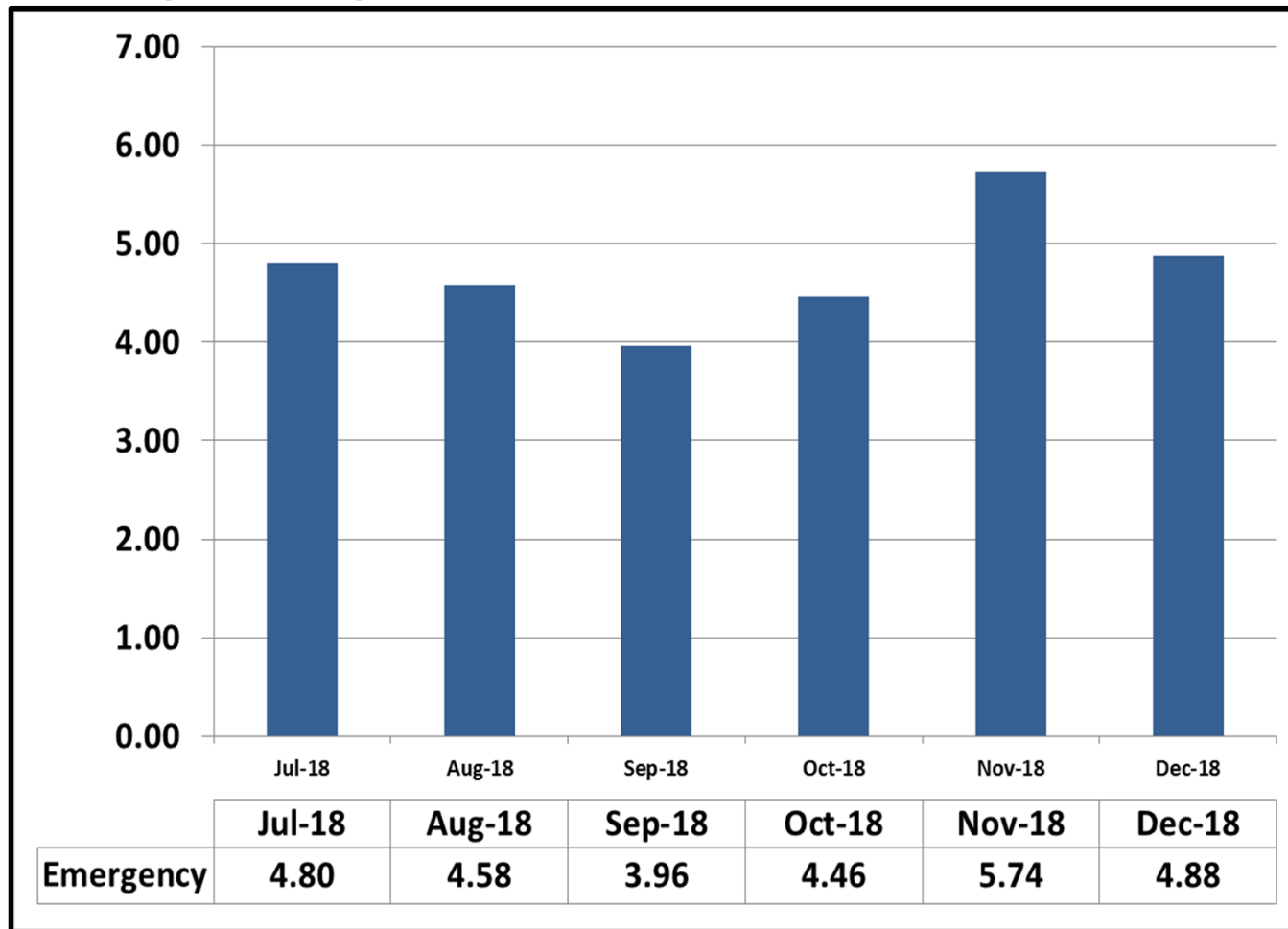
Key Performance Indicators

Crimes Against Persons, Property, and Society – December 2018



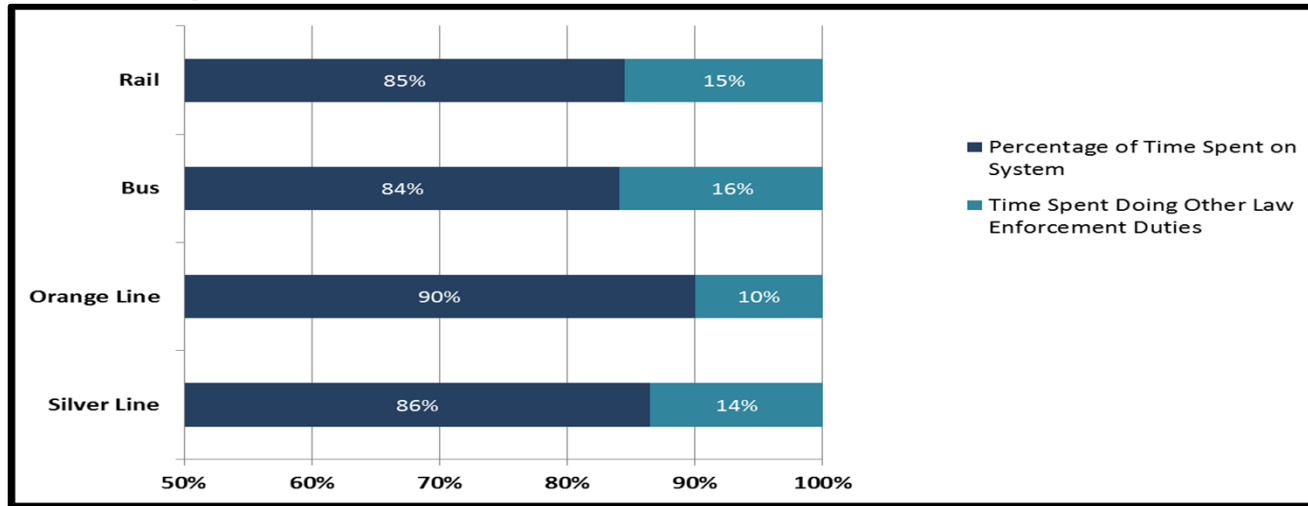
Key Performance Indicators

Average Emergency Response Times – December 2018

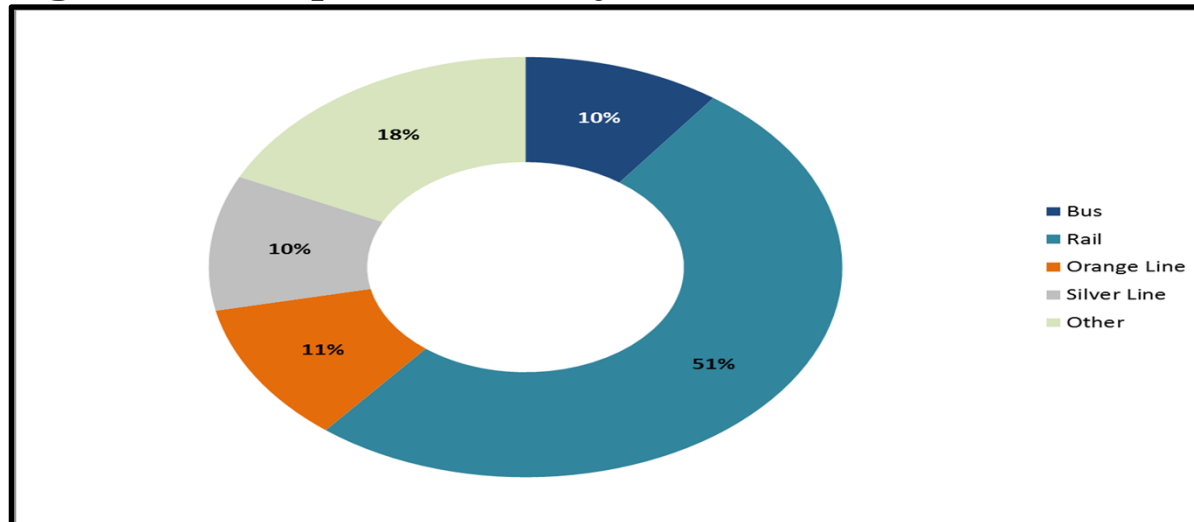


Key Performance Indicators

Percentage of Time Spent on the System – December 2018

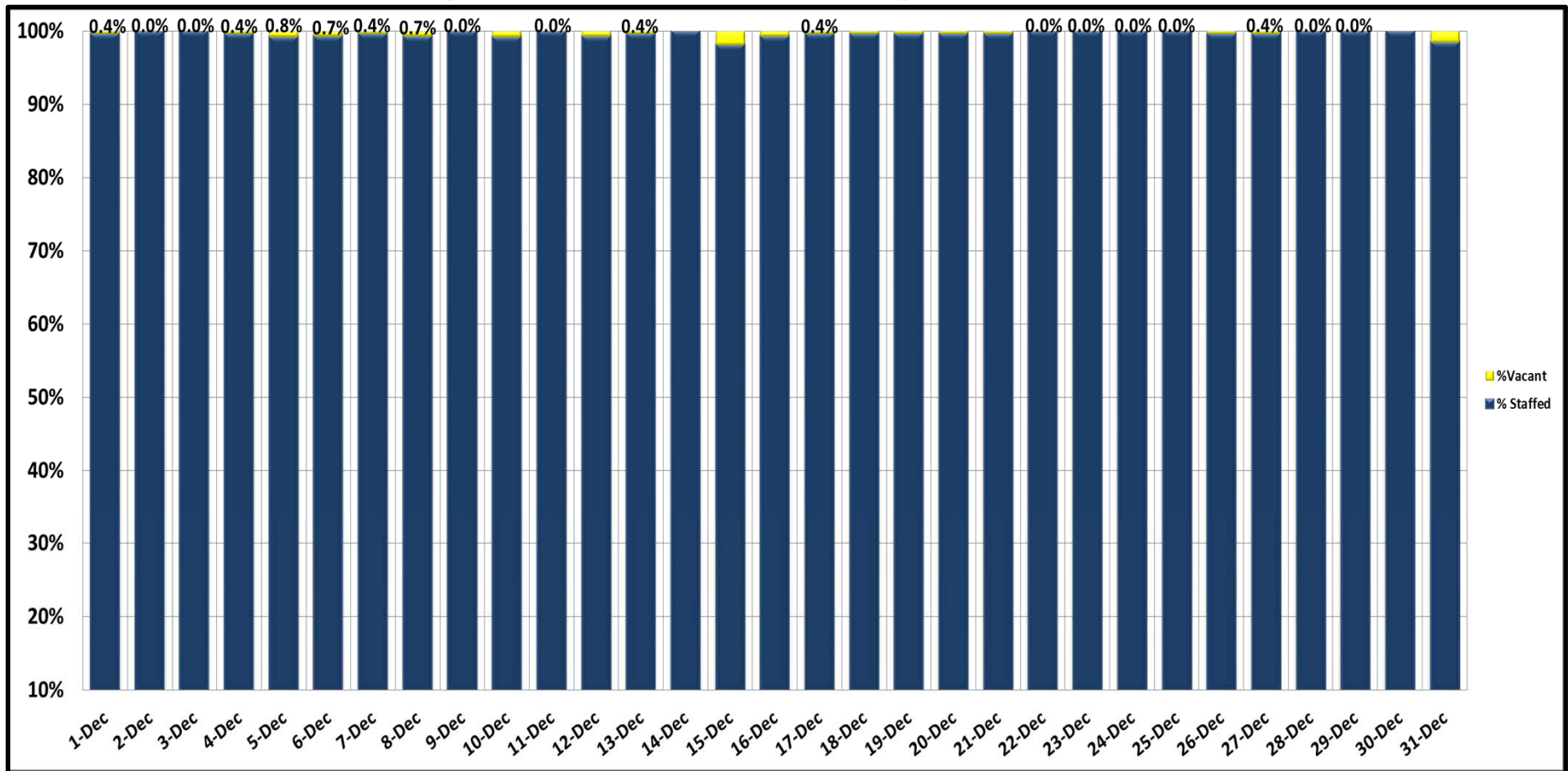


Percentage of Time Spent on the System as a Whole – December 2018



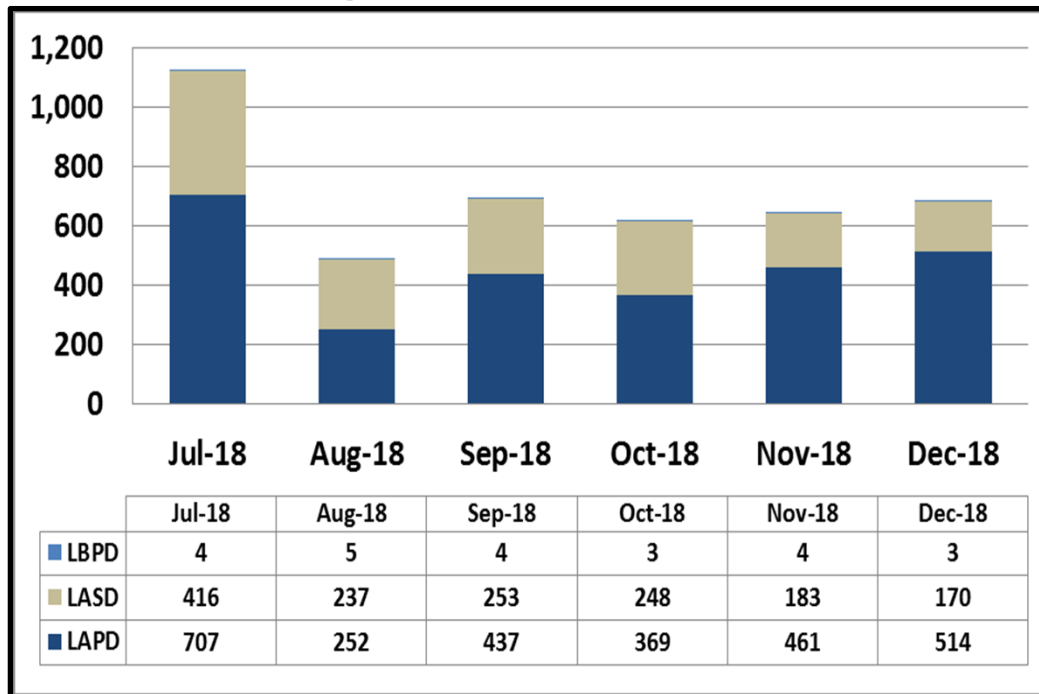
Key Performance Indicators

Ratio of Staffing Levels vs Vacant Assignments – December 2018



Key Performance Indicators

Grade Crossing Operations – December 2018

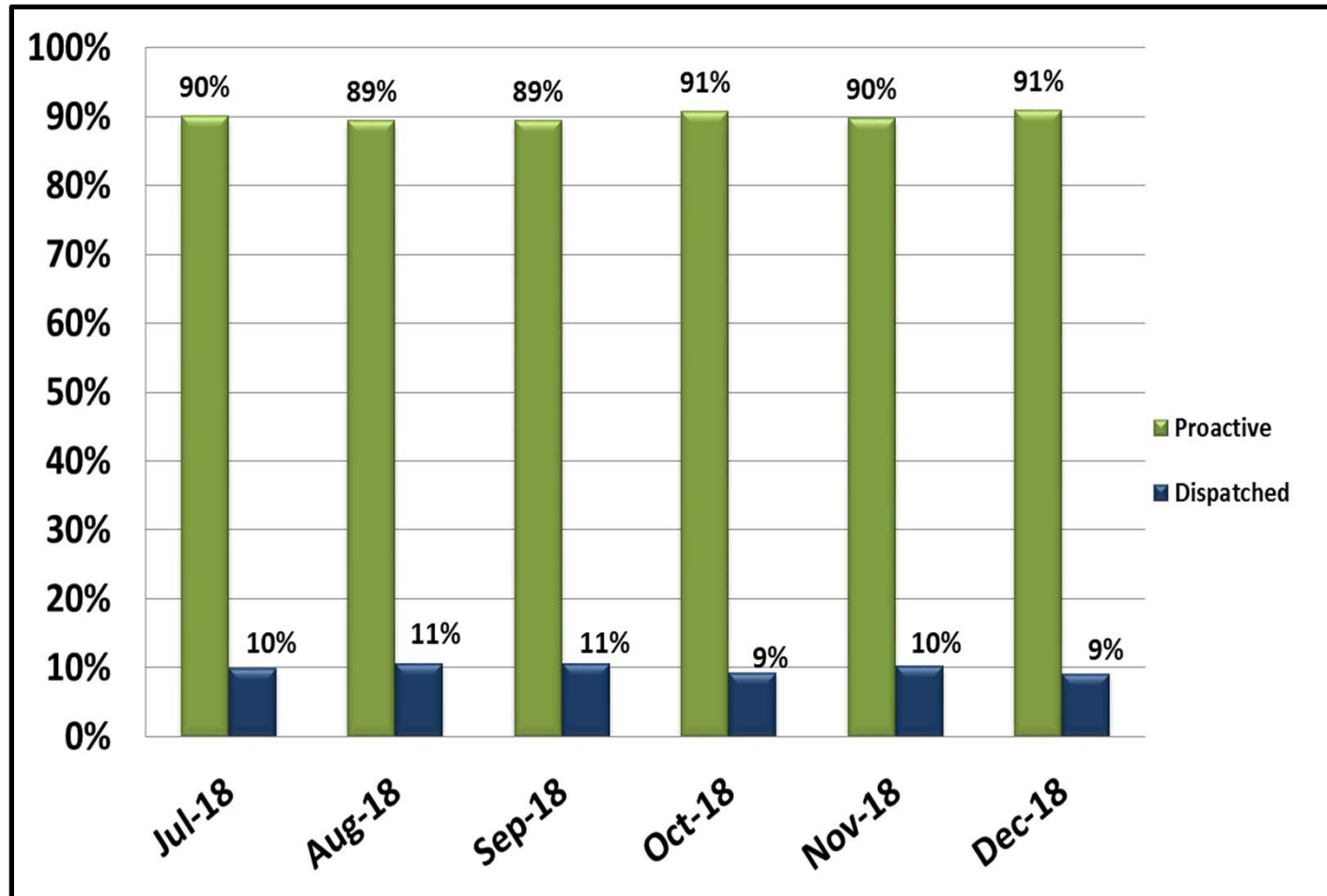


Grade Crossing Operation Locations October:

1. Blue Line Stations (145)
2. Expo Line Stations (335)
3. Gold Line Stations (207)

Key Performance Indicators

Ratio of Proactive vs Dispatched Activity – December 2018



Homeless Outreach

Current investment: over \$5M annually for the C3 Outreach teams (40 personnel)

Recently added:

- **LAPD: 10 full-time HOPE Officers**
- **LASD: MET Teams increased from 6 to 10**
- **LBPD: 2 Quality of Life Officers**

Metro is also working with a consultant