



File #: 2020-0253, File Type: Oral Report / Presentation

Agenda Number: 33.

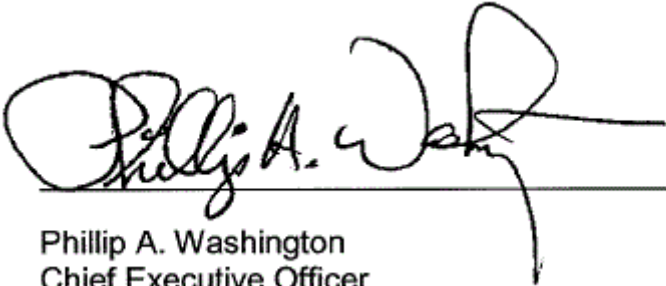
**EXECUTIVE MANAGEMENT COMMITTEE
APRIL 16, 2020**

SUBJECT: CORONAVIRUS (COVID-19) UPDATE

ACTION: ORAL REPORT

RECOMMENDATION

RECEIVE oral report regarding Coronavirus (COVID-19).

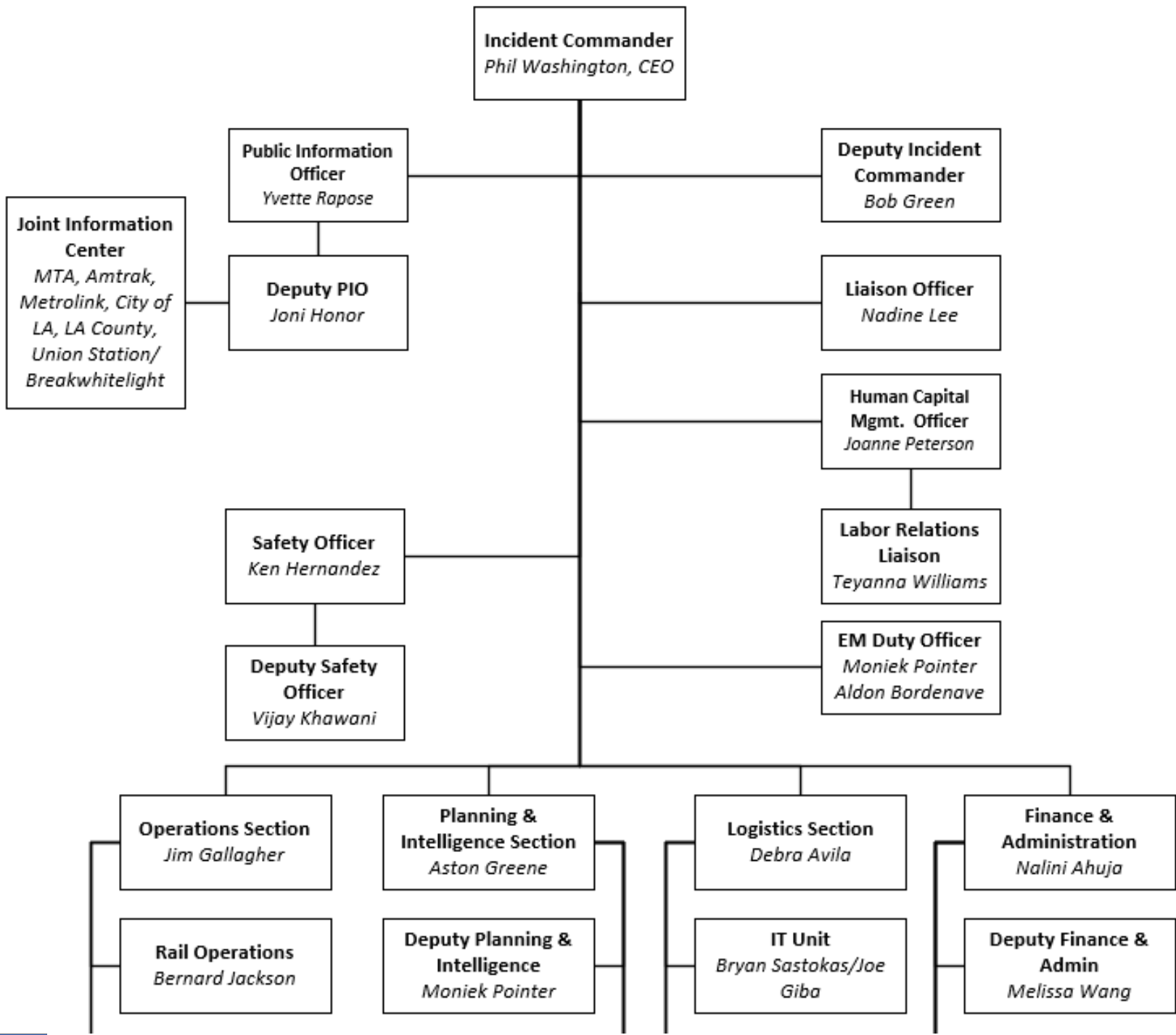


Phillip A. Washington
Chief Executive Officer

Coronavirus (COVID-19) Update

2020-0253

Operations, Safety, and Customer Experience Committee
Executive Management Committee



Incident Command Structure (ICS)

ICS 201 Briefing

Operations

- Continue to monitor ridership and operations staffing to plan for and implement service reduction strategies.

Human Resources

- Manage leave processes, periodically reevaluating and updating documentation based on public health and safety orders and recently released aid packages for employee leave.
- Maintain leave processes to limit the number of employees in Metro non-operations facilities, identifying telecommute opportunities and schedules to consider employee requests and the needs of the agency to comply with social distancing orders.

Safety

- Develop, review and revise internal safety protocols for reporting suspected and confirmed cases, and screening procedures for vendors and contractors conducting business at Metro sites.

Communications

- Continue to provide risk communications and daily event updates to employees and LAUS complex stakeholders through a Daily email brief.

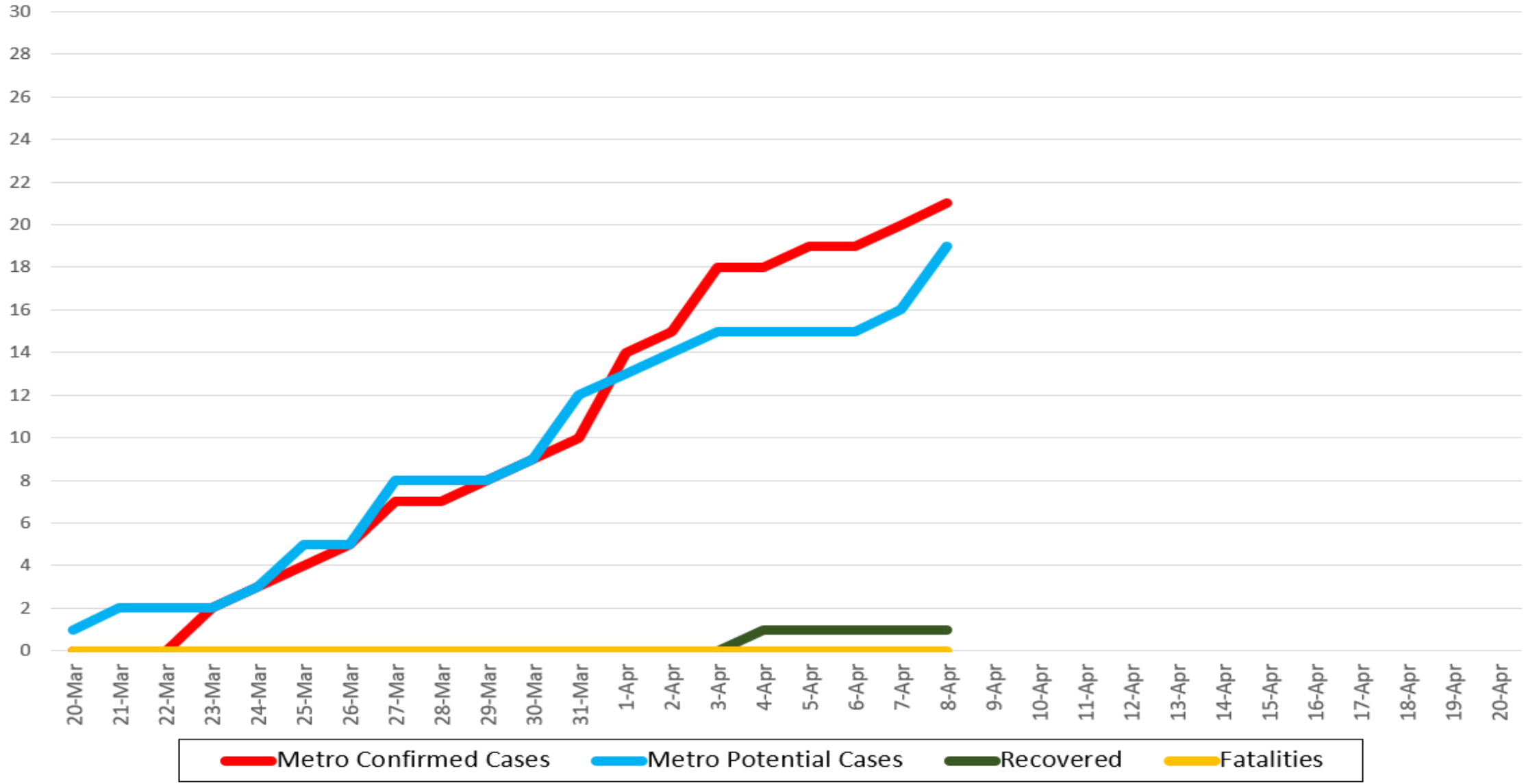
Logistics

- Maintain and continue to increase inventory of protective equipment; masks, gloves, hand sanitizer and other identified supplies to maintain Metro daily operations, for a minimum 6-month supply level.
- Develop an inventory conservation plan for resources in short supply and high demand, to prolong current supply availability.

Emergency Management

- Implement essential worker only Metro access and alternate transportation services for public essential trips, based on health order.

COVID-19 Confirmed & Potential Cases



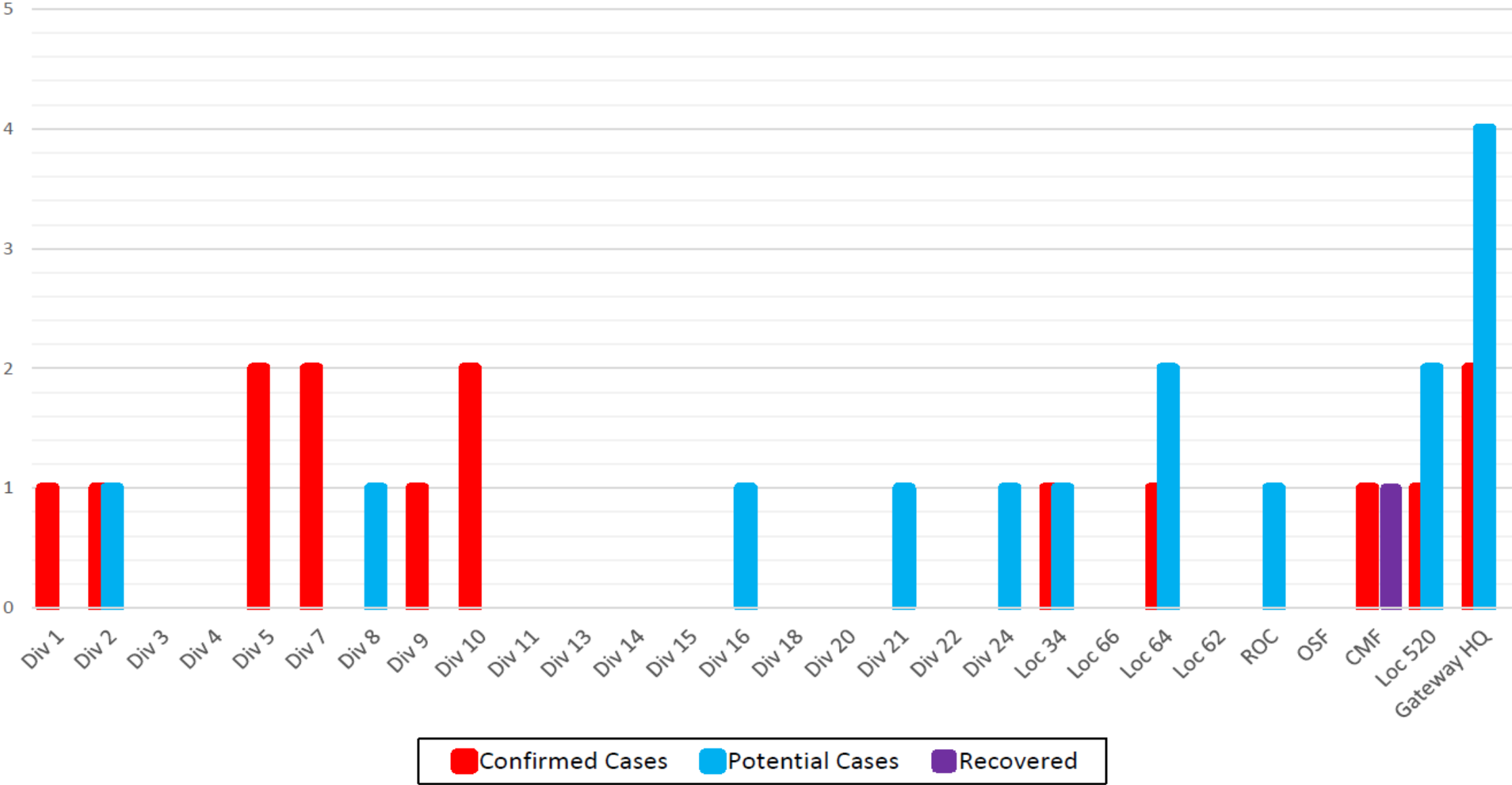
Weekly Increase %

Wk1: Mar 23rd to Mar 30th – 350%

Wk2: Mar 30th to Apr 6th – 100%

5% Recovered

COVID-19 Confirmed & Potential Cases by Metro Site



April 9, 2020
08:40

LA METRO STATUS

TOTAL BUS STOPS

19,145

BUS STOPS CLOSED

0

METRO STATIONS OPEN

96

METRO STATIONS CLOSED

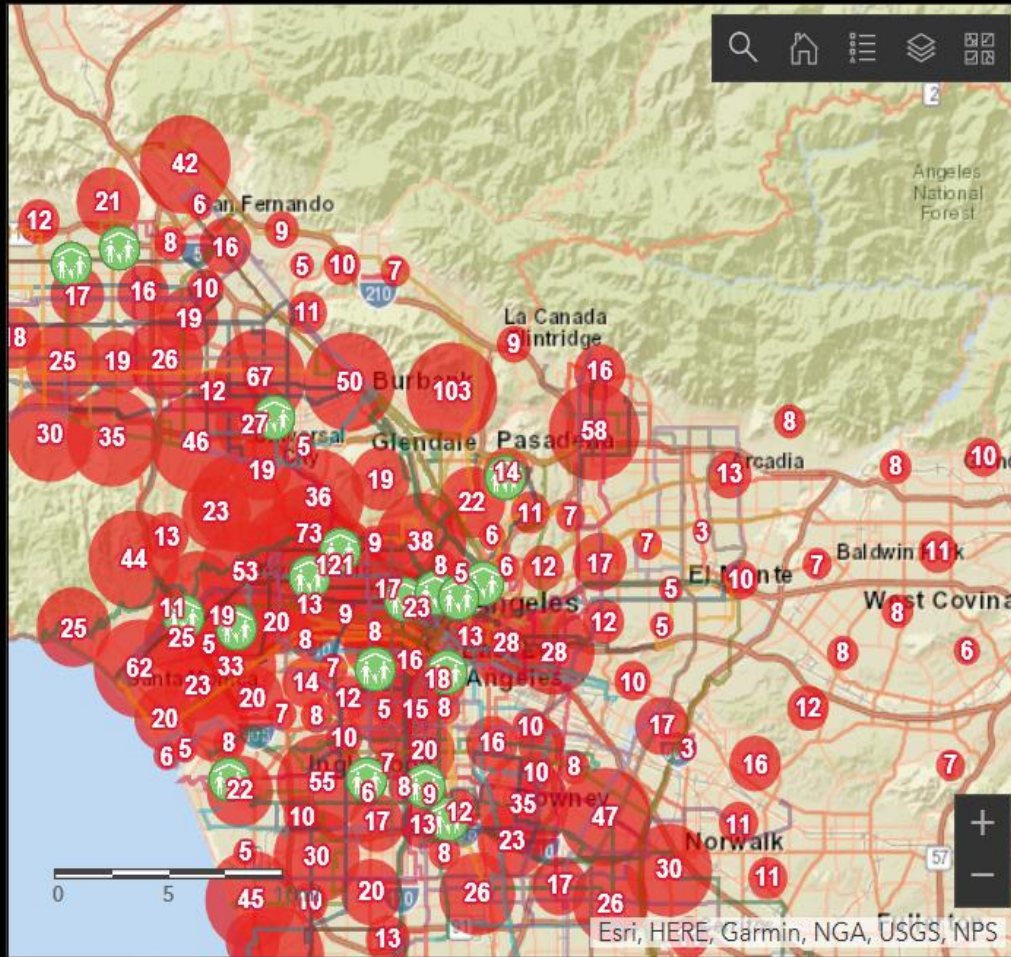
0

BUS ROUTES OPEN

671

BUS ROUTES CLOSED

0



Buses Rails Shelters Parks and Gardens

TEMPORARY SHELTERS

20

Total Shelters

LA COUNTY CASES BY CITY/COMMUNITY

City of Long Beach
Total: 256

Los Angeles - Melrose
Total: 168

City of Glendale
Total: 166

SOURCE: LOS ANGELES COUNTY DEPARTMENT OF PUBLIC HEALTH
AS OF 4/8/2020, 3:30 PM

*These numbers are subject to change based on further investigation
*Does not include "Under Investigation" cases

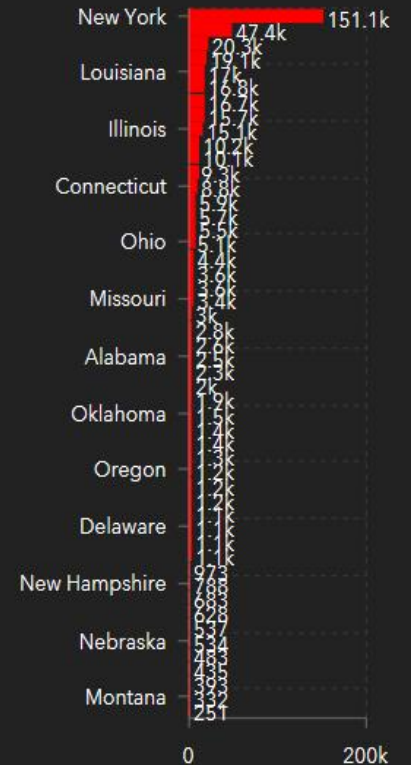
CONFIRMED CASES

CALIFORNIA

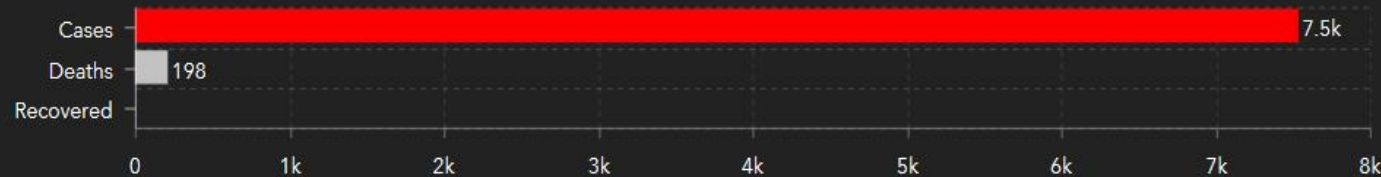
19,063

CALIFORNIA US GLOBAL

UNITED STATES



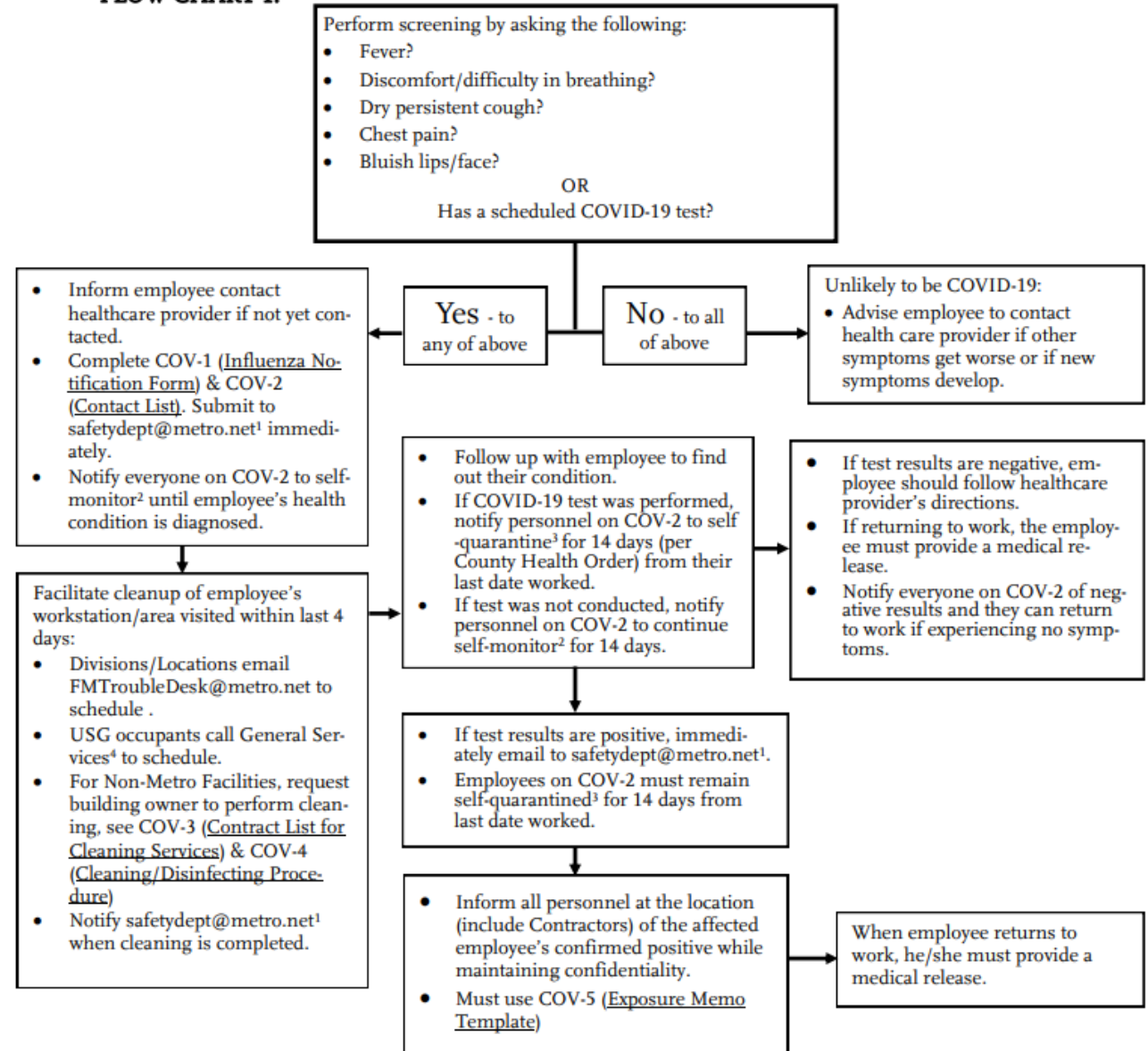
COVID-19 CASES IN LOS ANGELES COUNTY



COVID-19 Process & Responsibilities for Directors/Managers/Supervisors 4/6/2020

1. The immediate Supervisor/Project Manager receives information from an employee/contractor suspecting he/she may have influenza or COVID-19. Perform screening for symptoms below.
2. Do not visit the person if this can be avoided – manage the process over the phone. If notified in person, maintain social distance. Inform the individual to contact their healthcare provider if any of the below symptoms are present.

FLOW CHART 1.



Internal Process for Managing COVID-19 Cases