



## Board Report

---

**File #:** 2020-0486, **File Type:** Informational Report

**Agenda Number:** 29.

---

### OPERATIONS, SAFETY AND CUSTOMER EXPERIENCE COMMITTEE AUGUST 20, 2020

**SUBJECT: MONTHLY UPDATE ON TRANSIT SAFETY AND SECURITY PERFORMANCE**

**ACTION: RECEIVE AND FILE**

#### **RECOMMENDATION**

RECEIVE AND FILE Transit Safety and Security Report

#### **ISSUE**

This report reflects June 2020 performance data as reported under the transit policing deployment strategy which is a combination of in-house fare compliance officers, private security for fixed post assets and a multi-agency law enforcement deployment strategy by the Los Angeles Police Department (LAPD), Los Angeles County Sheriff's Department (LASD), and Long Beach Police Department (LBPD). In addition, the report highlights initiatives from the System Security and Law Enforcement department and its efforts to create a safer environment for Metro employees and a safer experience for Metro customers.

#### **BACKGROUND**

The System Security and Law Enforcement (SSLE) department entered into a multi-agency policing partnership in 2017 to increase the number of police on the Metro system to provide a greater, more visible "felt presence" of police to help deter criminal activity on Metro buses and trains.

#### **DISCUSSION**

##### **DEPLOYMENT ANALYSIS AND FORMULA DEVELOPMENT**

Transit Security has conducted the following review of overall deployment of resources and has taken the following actions.

- Evaluated RMI Security and their subcontractors' deployments throughout the system. We have removed several assignments that were determined to be no longer needed and re-deployed several guards to new assignments. Following this assessment, the Department realized a total cost savings of approximately \$35,155 per week.

Transit Security managerial staff will continue to assess the need for contract security throughout the Metro system and further adjust staffing as necessary.

Staff has also reviewed Transit Security Department’s overtime assignments to include supervisory assignments, priority assignments and special skill assignments (i.e., Dispatcher; Transit Watch; Training staff, etc.). These positions must be filled with straight time personnel unless the Director of Transit Security approves a deviation. We are currently looking to train additional personnel for these special skill assignments to further reduce overtime.

**LAW ENFORCEMENT CONTRACT COMPLIANCE**

Subsequent testing of the Mobile Phone Validator (MPV) dashboard has shown uneven to subpar results. When specific dates, times, deployment periods and watch/shift are researched the results are sporadic and undependable. After additional discussion with Axiom personnel, it was determined that this is likely a result of poor or no connectivity in the subterranean portions of the system. Once Officers enter the underground portion of the system, their location is not detected by the satellite which isolates their position until they surface again. Many Officers do not surface at all during a shift because they are assigned to stations or platforms that are underground. However, some officers, show up routinely and frequently on our map because many of their assignments are fixed posts at mezzanines, terraces, or other non-tunnel locations. On Monday June 29<sup>th</sup>, Axiom’s Project Manager, sent us an information sheet about how their satellite works, and addressed some questions about the poor connectivity and the impact on our mapping functionality. He admitted that the lack of connectivity will continue, and they currently do not have a solution.

An alternative to the map features could be a report conducted by the Mobile Device Manager (MDM) system, which would tell us which TAP cards (in this case, badges) were read and at what times. With this tool we could see which employees logged into the MPV application, at what time, and at which point they logged off. However, we have tried running reports on three different occasions and no reports were ever generated, Axiom personnel stated on July 14<sup>th</sup> that the reports function should be operational. We will continue to run reports and report any issues to Axiom. SSLE has begun to look at other vendors, or options that may provide a better solution. We will work with Metro IT to develop a Request for Proposal to determine if there are effective options.

**TRANSIT SECURITY HIRING EFFORTS**

Current Staffing Levels

As of 7/16/20:

Job Title	# Budgeted	# Filled	Vacancies	Capacity
Transit Security LT	5	5	0	100.00%
Transit Security SGT	12	10	2	83.33 %
SR Transit Security OFCR	15	13	2	86.67%
Transit Security OFCR II	75	72	3	98.67%
Transit Security OFCR I	77	67	10	87.01%
<b>TOTAL</b>	<b>184</b>	<b>167</b>	<b>17</b>	<b>90.76%</b>

Hiring Plan

We have processed 161 applicants through the qualification process (interview, written assessment, physical agility, and live scan). Intake meetings are being completed with qualified candidates to select those suitable to continue with the process. Beginning July 27, 2020, we will process another 87 applicants.

Training: Metro Academy Program (MAP)

- **M A P CLASS 18** -. The curriculum has been modified similarly to the Class 17 curriculum due to the unavailability of most 3<sup>rd</sup> party training vendors. Also, staffing of the training cadre will be modified because of the small size of the class as to have minimal impact on operations.
- **ENHANCED SEXUAL HARASSMENT TRAINING** - PowerPoint training completed at roll calls. 97% complete.

**BUS OPERATOR ASSAULTS**

In June, there were a total of (13) assaults on bus operators, with (6) assaults occurring in LAPD's jurisdiction and (7) assaults occurring in LASD's jurisdiction. All (13) assaults occurred on the bus system on different lines. Ten of the suspects were males and (3) of the suspects were females. Five suspects were arrested.

**EMERGENCY MANAGEMENT COVID-19 RESPONSE**

The Emergency Management Department (EMD) has continued to support Metro's Incident Management Team in the Agency's response to COVID-19. EMD activated Metro's Emergency Operations Center (EOC) starting March 10, 2020, and began coordination of bi-weekly Command Staff meetings, intelligence briefings and communication with local government and transit partners on regional response, best practices and real-time lessons learned during this incident.

EMD has implemented a Duty Officer Program, with 24/7 availability to aid Metro employees with any questions regarding Metro's COVID-19 response, COVID-19 case tracking and reporting, and all incident related assistance or inquiries for information. Metro's EOC has facilitated and/or provided guidance in notifications to staff, acquiring of emergency supplies, funding regulations & expense reimbursement strategies, safety protocols, regional transit communications (Joint Information Center), and requests from LA County and City EOCs.

Since March 10, 2020 the Emergency Management Department has facilitated the following for COVID-19 response activities:

- 60 Command Staff Meetings
- Over 200 Duty Officer calls
- 77 Command Staff Public Health Intelligence Briefs
- 92 Operational Periods of EOC Activation
- Through LA County Office of Emergency Management, acquired over 100,000 masks and other personal protective equipment and supplies, for employees
- Maintain direct communication with APTA & DHS/TSA/CISA, LA County Public Health, LA County Office of Emergency Management, and LA City Emergency Management Department COVID-19 Planning Groups
- Assisted in collecting data and facilitating the FEMA reimbursement application process for Metro's COVID-19 response and mitigation expenses

Emergency Management has also procured emergency water with a 50-year shelf life and distributed

to all divisions, locations and headquarters.

### **HOMELESS OUTREACH SERVICES**

Updates are reflected on the Quarterly Homeless Outreach report.

### **SEXUAL HARASSMENT INITIATIVES**

SSLE has developed a new Sexual Harassment response protocol and Sensitivity Training to better meet the needs of victims of sexual harassment while aboard Metro. Training was complete as of July 1, 2020 and internal and external Metro marketing materials have been updated.

### **PEACE OVER VIOLENCE PERFORMANCE JUNE 2020 METRICS**

<b>Performance Measure</b>	<b>Number Served</b>
Total Sexual Harassment Cases Contacting POV	2
Total Cases of Metro Located Sexual Harassment Contacting POV	2
Total Number of Metro Riders Requesting Counseling Services	2
Total Number of Police Reports Filed or Intended to File	2
Total Number of Active Cases	1

### **JUNE FULL BOARD MEETING**

At June's Full Board Meeting, Board Director Fasana requested a report back on how the changes in Metro's fare enforcement have impacted our fare revenue. The FY20 budget assumption before COVID for fare revenue was approximately \$23.7 million per month, of which \$16.6M was estimated for Bus and \$6.8M for Rail. The fare revenue collected after COVID-19 is around \$1.2 to \$1.6 million a month. This is a 95% drop in fare revenue since the Safe-at-Home orders were implemented.

The decrease in fare revenue is mostly attributed to a decrease in ridership as a result of the Safe-at-Home orders and Metro implementing rear-door boarding on buses to minimize contact between our bus operators and riders. Also, our fare enforcement officers realigned their efforts from fare enforcement to educating our riders on essential travel.

### **NEXT STEPS**

Staff will continue to monitor our law enforcement partners, private security, and Transit Security performance, monitor crime stats, and adjust deployment as necessary.


### **ATTACHMENTS**

- Attachment A - System-Wide Law Enforcement Overview June 2020
- Attachment B - MTA Supporting Data June 2020
- Attachment C - Key Performance Indicators June 2020
- Attachment D - Transit Police Summary June 2020

Prepared by: Jimmy Abarca, Senior Administrative Analyst, System Security and Law Enforcement,

(213) 922-2615

Reviewed by: Bob Green, Chief System Security and Law Enforcement Officer, (213) 922-4811



---

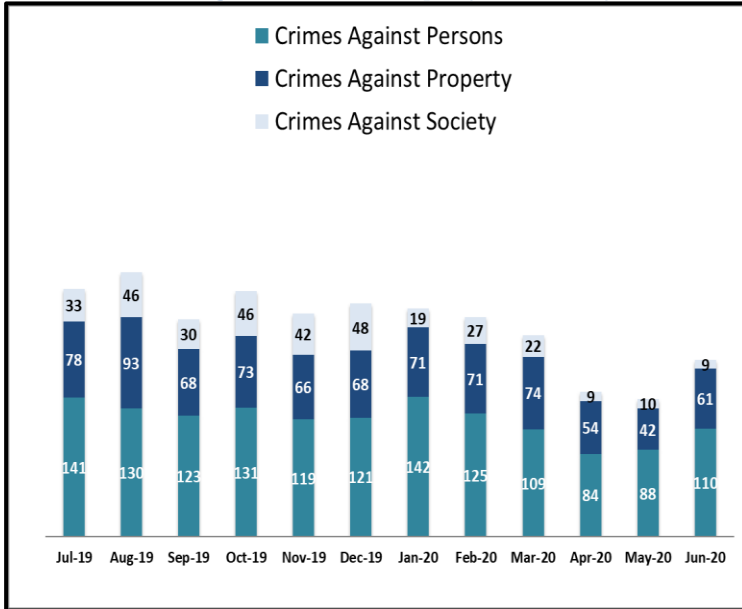
Phillip A. Washington  
Chief Executive Officer

# SYSTEM-WIDE LAW ENFORCEMENT OVERVIEW

JUNE 2020

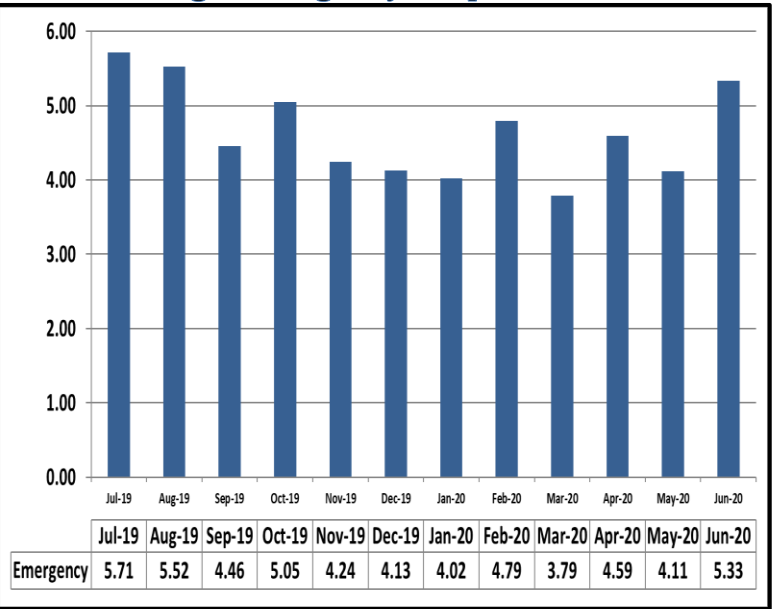
Attachment A

## Crimes Against Persons, Property, and Society



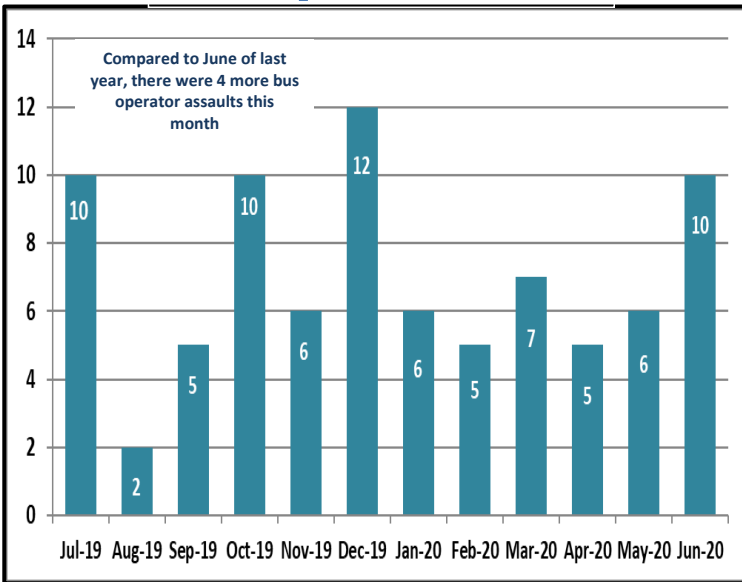
When compared to the same period last year, Crimes Against Persons decreased by 33 crimes, Crimes Against Property decreased by 30 crimes, and Crimes Against Society decreased by 11 crimes.

## Average Emergency Response Times

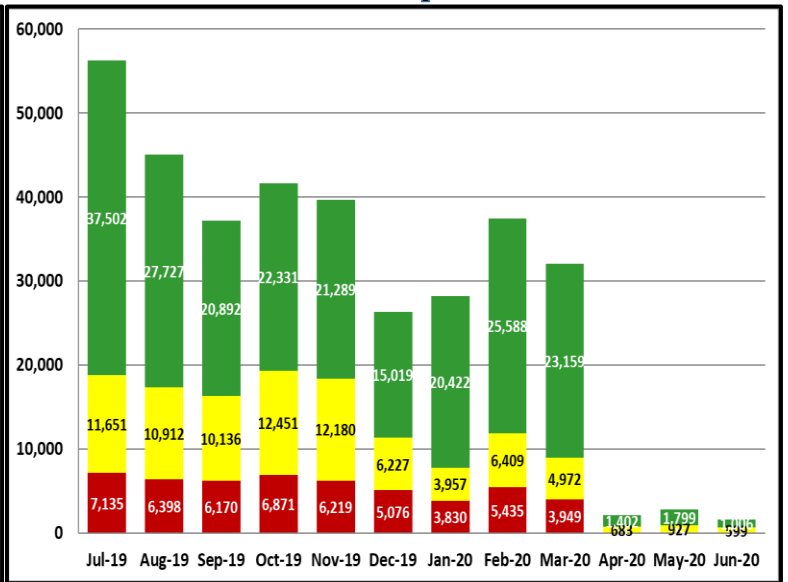


Average emergency response time was 5.33 mins.

## Bus Operator Assaults



## Fare Compliance



**Green Checks**- Occurs when a patron has valid fare  
**Yellow Checks**- Occurs when a patron has valid fare, but did not tap at transfer station  
**Red Checks**- Occurs when a patron has invalid fare

### MONTHLY UPDATE ON TRANSIT POLICING PERFORMANCE - JUNE 2020

REPORTED CRIME				
CRIMES AGAINST PERSONS	LAPD	LASD	LBDP	FYTD
Homicide	0	0	0	0
Rape	0	0	0	1
Robbery	0	3	1	42
Aggravated Assault	0	0	0	28
Aggravated Assault on Operator	0	0	0	0
Battery	1	3	0	56
Battery Rail Operator	0	0	0	0
Sex Offenses	0	0	0	8
<b>SUB-TOTAL</b>	<b>1</b>	<b>6</b>	<b>1</b>	<b>135</b>
CRIMES AGAINST PROPERTY	LAPD	LASD	LBDP	FYTD
Burglary	0	0	0	3
Larceny	2	4	1	46
Bike Theft	0	0	0	1
Motor Vehicle Theft	0	0	0	6
Arson	0	0	0	1
Vandalism	1	2	0	30
Other	0	0	0	0
<b>SUB-TOTAL</b>	<b>3</b>	<b>6</b>	<b>1</b>	<b>87</b>
CRIMES AGAINST SOCIETY	LAPD	LASD	LBDP	FYTD
Weapons	0	1	0	18
Narcotics	0	1	0	55
Trespassing	0	0	0	15
<b>SUB-TOTAL</b>	<b>0</b>	<b>2</b>	<b>0</b>	<b>88</b>
<b>TOTAL</b>	<b>4</b>	<b>14</b>	<b>2</b>	<b>310</b>

CRIMES PER STATION				
STATION	CRIMES AGAINST PERSONS	CRIMES AGAINST PROPERTY	CRIMES AGAINST SOCIETY	FYTD
7th St/Metro Ctr	0	1	0	19
Pico	1	0	0	9
Grand/LATTC	0	0	0	1
San Pedro St	0	0	0	5
Washington	0	1	0	6
Vernon	0	0	0	4
Slauson	2	1	0	19
Florence	0	0	0	20
Firestone	1	0	0	14
103rd St/Watts Towers	0	1	0	10
Willowbrook/Rosa Parks	1	2	2	72
Compton	1	1	0	39
Artesia	0	1	0	37
Del Amo	1	1	0	12
Wardlow	0	0	0	2
Willow St	0	0	0	10
PCH	0	0	0	8
Anaheim St	0	0	0	8
5th St	0	0	0	2
1st St	1	0	0	3
Downtown Long Beach	0	3	0	12
Pacific Av	0	0	0	1
Blue Line Rail Yard	0	0	0	0
<b>Total</b>	<b>8</b>	<b>12</b>	<b>2</b>	<b>313</b>

ARRESTS				
AGENCY	LAPD	LASD	LBDP	FYTD
Felony	0	0	1	197
Misdemeanor	1	15	17	808
<b>TOTAL</b>	<b>1</b>	<b>15</b>	<b>18</b>	<b>1005</b>

CITATIONS				
AGENCY	LAPD	LASD	LBDP	FYTD
Other Citations	2	14	0	10,132
Vehicle Code Citations	1	0	15	8,698
<b>TOTAL</b>	<b>3</b>	<b>14</b>	<b>15</b>	<b>18,830</b>

CALLS FOR SERVICE				
AGENCY	LAPD	LASD	LBDP	FYTD
Routine	1	74	4	827
Priority	10	83	27	1,412
Emergency	2	15	12	345
<b>TOTAL</b>	<b>13</b>	<b>172</b>	<b>43</b>	<b>2,584</b>

DISPATCHED VS. PROACTIVE			
AGENCY	LAPD	LASD	LBDP
Dispatched	24%	4%	3%
Proactive	76%	96%	97%
<b>TOTAL</b>	<b>100%</b>	<b>100%</b>	<b>100%</b>

PERCENTAGE OF TIME ON THE RAIL SYSTEM	
Blue Line-LAPD	91%
Blue Line-LASD	15%
Blue Line-LBDP	70%

GRADE CROSSING OPERATIONS				
LOCATION	LAPD	LASD	LBDP	FYTD
Washington St	0	0	0	109
Flower St	0	0	0	46
103rd St	0	0	0	3
Wardlow Rd	0	0	2	33
Pacific Ave.	0	0	0	2
Willowbrook	0	35	0	311
Slauson	0	0	0	83
Firestone	0	0	0	38
Florence	0	17	0	134
Compton	0	36	0	209
Artesia	0	21	0	61
Del Amo	0	0	0	40
Long Beach Blvd	0	0	0	10
<b>TOTAL</b>	<b>0</b>	<b>109</b>	<b>2</b>	<b>1,079</b>

LEGEND
Los Angeles Police Department
Los Angeles County Sheriff's Department
Long Beach Police Department

### MONTHLY UPDATE ON TRANSIT POLICING PERFORMANCE - JUNE 2020

REPORTED CRIME			
CRIMES AGAINST PERSONS	LAPD	LASD	FYTD
Homicide	0	0	0
Rape	0	0	3
Robbery	0	5	39
Aggravated Assault	0	2	21
Aggravated Assault on Operator	0	0	0
Battery	2	0	42
Battery Rail Operator	0	0	0
Sex Offenses	0	0	8
<b>SUB-TOTAL</b>	<b>2</b>	<b>7</b>	<b>113</b>
CRIMES AGAINST PROPERTY	LAPD	LASD	FYTD
Burglary	0	0	3
Larceny	1	2	21
Bike Theft	0	0	1
Motor Vehicle Theft	0	0	4
Arson	0	1	2
Vandalism	0	2	17
<b>SUB-TOTAL</b>	<b>1</b>	<b>5</b>	<b>48</b>
CRIMES AGAINST SOCIETY	LAPD	LASD	FYTD
Weapons	0	0	12
Narcotics	0	0	21
Trespassing	0	0	5
<b>SUB-TOTAL</b>	<b>0</b>	<b>0</b>	<b>38</b>
<b>TOTAL</b>	<b>3</b>	<b>12</b>	<b>199</b>

ARRESTS			
AGENCY	LAPD	LASD	FYTD
Felony	0	3	75
Misdemeanor	1	4	291
<b>TOTAL</b>	<b>1</b>	<b>7</b>	<b>366</b>

CITATIONS			
AGENCY	LAPD	LASD	FYTD
Other Citations	0	4	397
Vehicle Code Citations	5	0	103
<b>TOTAL</b>	<b>5</b>	<b>4</b>	<b>500</b>

CALLS FOR SERVICE			
AGENCY	LAPD	LASD	FYTD
Routine	0	91	1,220
Priority	5	70	980
Emergency	0	11	135
<b>TOTAL</b>	<b>5</b>	<b>172</b>	<b>2,335</b>

DISPATCHED VS. PROACTIVE		
AGENCY	LAPD	LASD
Dispatched	18%	5%
Proactive	82%	95%
<b>TOTAL</b>	<b>100%</b>	<b>100%</b>

CRIMES PER STATION				
STATION	CRIMES AGAINST PERSONS	CRIMES AGAINST PROPERTY	CRIMES AGAINST SOCIETY	FYTD
Redondo Beach	0	0	0	9
Douglas	0	0	0	0
El Segundo	0	0	0	4
Mariposa	0	0	0	1
Aviation/LAX	0	0	0	5
Hawthorne/Lennox	1	1	0	11
Crenshaw	0	0	0	19
Vermont/Athens	4	2	0	23
Harbor Fwy	1	0	0	11
Avalon	1	1	0	16
Willowbrook/Rosa Parks	0	1	0	47
Long Beach Bl	0	0	0	26
Lakewood Bl	1	0	0	14
Norwalk	1	1	0	16
<b>Total</b>	<b>9</b>	<b>6</b>	<b>0</b>	<b>202</b>

PERCENTAGE OF TIME SPENT ON THE RAIL SYSTEM	
Green Line-LAPD	89%
Green Line-LASD	20%

LEGEND	
Los Angeles Police Department	
Los Angeles County Sheriff's Department	



### MONTHLY UPDATE ON TRANSIT POLICING PERFORMANCE - JUNE 2020

REPORTED CRIME			
CRIMES AGAINST PERSONS	LAPD	LASD	FYTD
Homicide	0	0	0
Rape	0	0	0
Robbery	5	0	34
Aggravated Assault	1	0	23
Aggravated Assault on Operator	0	0	0
Battery	7	0	60
Battery Rail Operator	0	0	0
Sex Offenses	0	1	17
<b>SUB-TOTAL</b>	<b>13</b>	<b>1</b>	<b>134</b>
CRIMES AGAINST PROPERTY	LAPD	LASD	FYTD
Burglary	0	0	1
Larceny	2	1	63
Bike Theft	1	0	18
Motor Vehicle Theft	0	0	0
Arson	0	0	0
Vandalism	1	1	6
<b>SUB-TOTAL</b>	<b>4</b>	<b>2</b>	<b>88</b>
CRIMES AGAINST SOCIETY	LAPD	LASD	FYTD
Weapons	0	0	2
Narcotics	0	0	3
Trespassing	0	0	6
<b>SUB-TOTAL</b>	<b>0</b>	<b>0</b>	<b>11</b>
<b>TOTAL</b>	<b>17</b>	<b>3</b>	<b>233</b>

ARRESTS			
AGENCY	LAPD	LASD	FYTD
Felony	0	0	56
Misdemeanor	1	0	112
<b>TOTAL</b>	<b>1</b>	<b>0</b>	<b>168</b>

CITATIONS			
AGENCY	LAPD	LASD	FYTD
Other Citations	0	0	270
Vehicle Code Citations	2	0	203
<b>TOTAL</b>	<b>2</b>	<b>0</b>	<b>473</b>

CALLS FOR SERVICE			
AGENCY	LAPD	LASD	FYTD
Routine	6	51	963
Priority	36	22	829
Emergency	3	4	84
<b>TOTAL</b>	<b>45</b>	<b>77</b>	<b>1,876</b>

DISPATCHED VS. PROACTIVE		
AGENCY	LAPD	LASD
Dispatched	18%	8%
Proactive	82%	92%
<b>TOTAL</b>	<b>100%</b>	<b>100%</b>

CRIMES PER STATION				
STATION	CRIMES AGAINST PERSONS	CRIMES AGAINST PROPERTY	CRIMES AGAINST SOCIETY	FYTD
7th St/Metro Ctr	0	0	0	9
Pico	0	0	0	1
LATTC/Ortho Institute	0	0	0	18
Jefferson/USC	0	0	0	10
Expo Park/USC	2	0	0	6
Expo/Vermont	1	0	0	18
Expo/Western	2	0	0	21
Expo/Crenshaw	1	2	0	18
Farmdale	4	0	0	20
Expo/La Brea		1	0	20
La Cienega/Jefferson	3	0	0	16
Culver City	0	0	0	11
Palms	0	0	0	7
Westwood/Rancho Park	0	0	0	2
Expo/Sepulveda	0	1	0	10
Expo/Bundy	0	0	0	22
26th St/Bergamot	0	1	0	7
17th St/SMC	1	1	0	8
Downtown Santa Monica	0	0	0	19
Expo Line Rail Yard	0	0	0	0
<b>Total</b>	<b>14</b>	<b>6</b>	<b>0</b>	<b>243</b>

PERCENTAGE OF TIME SPENT ON THE RAIL SYSTEM	
Expo Line-LAPD	91%
Expo Line-LASD	8%

GRADE CROSSING OPERATIONS			
LOCATION	LAPD	LASD	FYTD
Exposition Blvd	0	0	995
Santa Monica	N/A	6	148
Culver City	N/A	0	6
<b>TOTAL</b>	<b>0</b>	<b>6</b>	<b>1,149</b>

LEGEND	
Los Angeles Police Department	
Los Angeles County Sheriff's Department	

### MONTHLY UPDATE ON TRANSIT POLICING PERFORMANCE - JUNE 2020

#### REPORTED CRIME

CRIMES AGAINST PERSONS	LAPD	FYTD
Homicide	0	0
Rape	0	2
Robbery	2	34
Aggravated Assault	3	52
Aggravated Assault on Operator	0	0
Battery	11	190
Battery Rail Operator	0	2
Sex Offenses	3	19
<b>SUB-TOTAL</b>	<b>19</b>	<b>299</b>
CRIMES AGAINST PROPERTY	LAPD	FYTD
Burglary	0	0
Larceny	6	144
Bike Theft	0	10
Motor Vehicle Theft	0	1
Arson	0	0
Vandalism	4	18
<b>SUB-TOTAL</b>	<b>10</b>	<b>173</b>
CRIMES AGAINST SOCIETY	LAPD	FYTD
Weapons	0	0
Narcotics	0	0
Trespassing	1	35
<b>SUB-TOTAL</b>	<b>1</b>	<b>35</b>
<b>TOTAL</b>	<b>30</b>	<b>507</b>

#### ARRESTS

AGENCY	LAPD	FYTD
Felony	1	257
Misdemeanor	4	888
<b>TOTAL</b>	<b>5</b>	<b>1,145</b>

#### CITATIONS

AGENCY	LAPD	FYTD
Other Citations	0	3,940
Vehicle Code Citations	0	1,276
<b>TOTAL</b>	<b>0</b>	<b>5,216</b>

#### CALLS FOR SERVICE

AGENCY	LAPD	FYTD
Routine	19	40
Priority	97	189
Emergency	6	9
<b>TOTAL</b>	<b>122</b>	<b>238</b>

#### DISPATCHED VS. PROACTIVE

AGENCY	LAPD
Dispatched	18%
Proactive	82%
<b>TOTAL</b>	<b>100%</b>

#### CRIMES PER STATION

STATION	CRIMES AGAINST PERSONS	CRIMES AGAINST PROPERTY	CRIMES AGAINST SOCIETY	FYTD
Union Station	3	0	0	75
Civic Center/Grand Park	0	0	0	12
Pershing Square	2	0	0	41
7th St/Metro Ctr	1	0	0	50
Westlake/MacArthur Park	4	2	0	68
Wilshire/Vermont	1	1	0	35
Wilshire/Normandie	0	0	0	6
Vermont/Beverly	1	0	0	29
Wilshire/Western	0	2	0	17
Vermont/Santa Monica	1	0	0	23
Vermont/Sunset	0	0	0	16
Hollywood/Western	0	0	0	17
Hollywood/Vine	0	0	0	24
Hollywood/Highland	2	0	0	28
Universal City/Studio City	3	1	1	17
North Hollywood	1	4	0	47
Red Line Rail Yard	0	0	0	0
<b>Total</b>	<b>19</b>	<b>10</b>	<b>1</b>	<b>505</b>

#### PERCENTAGE OF TIME SPENT ON THE RAIL SYSTEM

Red Line- LAPD	89%
----------------	-----

#### LEGEND

Los Angeles Police Department

### MONTHLY UPDATE ON TRANSIT POLICING PERFORMANCE - JUNE 2020

REPORTED CRIME			
CRIMES AGAINST PERSONS	LAPD	LASD	FYTD
Homicide	0	0	0
Rape	0	0	2
Robbery	0	2	16
Aggravated Assault	0	1	14
Aggravated Assault on Operator	0	0	0
Battery	2	5	41
Battery Rail Operator	0	0	2
Sex Offenses	0	0	3
<b>SUB-TOTAL</b>	<b>2</b>	<b>8</b>	<b>78</b>
CRIMES AGAINST PROPERTY	LAPD	LASD	FYTD
Burglary	0	0	0
Larceny	0	0	37
Bike Theft	0	0	13
Motor Vehicle Theft	0	0	4
Arson	0	0	1
Vandalism	1	1	22
<b>SUB-TOTAL</b>	<b>1</b>	<b>1</b>	<b>77</b>
CRIMES AGAINST SOCIETY	LAPD	LASD	FYTD
Weapons	0	0	5
Narcotics	0	1	7
Trespassing	1	0	3
<b>SUB-TOTAL</b>	<b>1</b>	<b>1</b>	<b>15</b>
<b>TOTAL</b>	<b>4</b>	<b>10</b>	<b>170</b>

ARRESTS			
AGENCY	LAPD	LASD	FYTD
Felony	0	0	43
Misdemeanor	2	2	165
<b>TOTAL</b>	<b>2</b>	<b>2</b>	<b>208</b>

CITATIONS			
AGENCY	LAPD	LASD	FYTD
Other Citations	2	5	384
Vehicle Code Citations	0	0	100
<b>TOTAL</b>	<b>2</b>	<b>5</b>	<b>484</b>

CALLS FOR SERVICE			
AGENCY	LAPD	LASD	FYTD
Routine	6	106	1,401
Priority	17	87	1,345
Emergency	2	7	151
<b>TOTAL</b>	<b>25</b>	<b>200</b>	<b>2,897</b>

DISPATCHED VS. PROACTIVE		
AGENCY	LAPD	LASD
Dispatched	21%	6%
Proactive	79%	94%
<b>TOTAL</b>	<b>100%</b>	<b>100%</b>

CRIMES PER STATION				
STATION	CRIMES AGAINST PERSONS	CRIMES AGAINST PROPERTY	CRIMES AGAINST SOCIETY	FYTD
APU/Citrus College	0	0	0	10
Azusa Downtown	0	0	0	5
Irwindale	1	0	1	9
Duarte/City of Hope	1	0	0	10
Monrovia	3	0	0	13
Arcadia	0	0	0	4
Sierra Madre Villa	1	1	0	11
Allen	0	0	0	4
Lake	0	0	0	5
Memorial Park	2	0	0	14
Del Mar	0	0	0	2
Fillmore	0	0	0	2
South Pasadena	0	0	0	2
Highland Park	0	0	0	6
Southwest Museum	0	0	0	6
Heritage Square	0	0	0	2
Lincoln/Cypress	0	1	0	7
Chinatown	0	0	0	4
Union Station	2	0	0	17
Little Tokyo/Arts Dist	0	0	0	4
Pico/Aliso	0	0	0	2
Mariachi Plaza	0	0	0	4
Soto	0	0	1	7
Indiana (both LAPD & LASD)	0	0	0	6
Maravilla	0	0	0	2
East LA Civic Ctr	0	0	0	2
Atlantic	0	0	0	10
<b>Total</b>	<b>10</b>	<b>2</b>	<b>2</b>	<b>170</b>

PERCENTAGE OF TIME SPENT ON THE RAIL SYSTEM	
Gold Line-LAPD	88%
Gold Line-LASD	22%

GRADE CROSSING OPERATIONS			
LOCATION	LAPD	LASD	FYTD
Marmion Way	0	0	684
Arcadia Station	0	7	100
Irwindale	0	6	48
Monrovia	0	6	50
City of Pasadena	0	12	251
Magnolia Ave	0	0	1
Duarte Station	0	4	45
City Of Azusa	0	20	136
South Pasadena	0	7	135
City Of East LA	0	38	136
Figueroa St	0	0	342
<b>TOTAL GOAL= 10</b>	<b>0</b>	<b>100</b>	<b>1,928</b>

LEGEND	
Los Angeles Police Department	
Los Angeles County Sheriff's Department	

### MONTHLY UPDATE ON TRANSIT POLICING PERFORMANCE - JUNE 2020

REPORTED CRIME		
CRIMES AGAINST PERSONS	LAPD	FYTD
Homicide	0	1
Rape	0	0
Robbery	2	14
Aggravated Assault	0	7
Aggravated Assault on Operator	0	0
Battery	3	19
Battery Bus Operator	0	1
Sex Offenses	0	1
<b>SUB-TOTAL</b>	<b>5</b>	<b>43</b>
CRIMES AGAINST PROPERTY	LAPD	FYTD
Burglary	0	0
Larceny	1	8
Bike Theft	1	4
Motor Vehicle Theft	0	0
Arson	0	0
Vandalism	1	5
<b>SUB-TOTAL</b>	<b>3</b>	<b>17</b>
CRIMES AGAINST SOCIETY	LAPD	FYTD
Weapons	0	0
Narcotics	0	0
Trespassing	0	0
<b>SUB-TOTAL</b>	<b>0</b>	<b>0</b>
<b>TOTAL</b>	<b>8</b>	<b>60</b>

ARRESTS		
AGENCY	LAPD	FYTD
Felony	0	10
Misdemeanor	0	40
<b>TOTAL</b>	<b>0</b>	<b>50</b>

CITATIONS		
AGENCY	LAPD	FYTD
Other Citations	0	2,480
Vehicle Code Citations	0	2,391
<b>TOTAL</b>	<b>0</b>	<b>4,871</b>

CALLS FOR SERVICE		
AGENCY	LAPD	FYTD
Routine	2	41
Priority	5	145
Emergency	2	11
<b>TOTAL</b>	<b>9</b>	<b>197</b>

DISPATCHED VS. PROACTIVE	
AGENCY	LAPD
Dispatched	15%
Proactive	85%
<b>TOTAL</b>	<b>100%</b>

PERCENTAGE OF TIME SPENT ON THE BUS SYSTEM	
Orange Line- LAPD	91%

LEGEND	
Los Angeles Police Department	

CRIMES PER STATION				
STATION	CRIMES AGAINST PERSONS	CRIMES AGAINST PROPERTY	CRIMES AGAINST SOCIETY	FYTD
North Hollywood	1	0	0	15
Laurel Canyon	0	0	0	0
Valley College	0	0	0	1
Woodman	0	0	0	0
Van Nuys	0	0	0	8
Sepulveda	0	0	0	2
Woodley	0	0	0	2
Balboa	0	1	0	4
Reseda	0	0	0	3
Tampa	1	0	0	4
Pierce College	0	0	0	2
De Soto	0	1	0	1
Canoga	1	0	0	5
Warner Center	0	0	0	0
Sherman Way	0	0	0	1
Roscoe	1	0	0	2
Nordhoff	0	0	0	3
Chatsworth	1	1	0	8
<b>Total</b>	<b>5</b>	<b>3</b>	<b>0</b>	<b>61</b>

### MONTHLY UPDATE ON TRANSIT POLICING PERFORMANCE - JUNE 2020

REPORTED CRIME			
CRIMES AGAINST PERSONS	LAPD	LASD	FYTD
Homicide	0	0	0
Rape	0	0	0
Robbery	0	0	3
Aggravated Assault	0	0	2
Aggravated Assault on Operator	0	0	0
Battery	2	0	5
Battery Bus Operator	0	0	0
Sex Offenses	0	0	2
<b>SUB-TOTAL</b>	<b>2</b>	<b>0</b>	<b>12</b>
CRIMES AGAINST PROPERTY	LAPD	LASD	FYTD
Burglary	0	0	0
Larceny	2	0	10
Bike Theft	0	0	0
Motor Vehicle Theft	0	0	0
Arson	0	0	0
Vandalism	0	0	2
<b>SUB-TOTAL</b>	<b>2</b>	<b>0</b>	<b>12</b>
CRIMES AGAINST SOCIETY	LAPD	LASD	FYTD
Weapons	0	0	0
Narcotics	0	0	2
Trespassing	0	0	0
<b>SUB-TOTAL</b>	<b>0</b>	<b>0</b>	<b>2</b>
<b>TOTAL</b>	<b>4</b>	<b>0</b>	<b>26</b>

ARRESTS			
AGENCY	LAPD	LASD	FYTD
Felony	0	0	1
Misdemeanor	0	0	74
<b>TOTAL</b>	<b>0</b>	<b>0</b>	<b>75</b>

CITATIONS			
AGENCY	LAPD	LASD	FYTD
Other Citations	0	0	2,364
Vehicle Code Citations	0	0	2,445
<b>TOTAL</b>	<b>0</b>	<b>0</b>	<b>4,809</b>

CALLS FOR SERVICE			
AGENCY	LAPD	LASD	FYTD
Routine	1	2	40
Priority	2	2	74
Emergency	0	0	7
<b>TOTAL</b>	<b>3</b>	<b>4</b>	<b>121</b>

DISPATCHED VS. PROACTIVE		
AGENCY	LAPD	LASD
Dispatched	0%	2%
Proactive	0%	98%
<b>TOTAL</b>	<b>0%</b>	<b>100%</b>

CRIMES PER STATION				
STATION	CRIMES AGAINST PERSONS	CRIMES AGAINST PROPERTY	CRIMES AGAINST SOCIETY	FYTD
El Monte	0	0	0	2
Cal State LA	0	0	0	0
LAC/USC Medical Ctr	0	0	0	0
Alameda	0	0	0	2
Downtown	0	0	0	3
37th St/USC	0	0	0	0
Slauson	0	0	0	1
Manchester	0	0	0	0
Harbor Fwy	2	0	0	5
Rosecrans	0	1	0	4
Harbor Gateway Transit Ctr	1	1	0	7
Carson	0	0	0	1
PCH	0	0	0	1
San Pedro/Beacon	0	0	0	1
<b>Total</b>	<b>3</b>	<b>2</b>	<b>0</b>	<b>27</b>

PERCENTAGE OF TIME SPENT ON THE BUS SYSTEM	
Silver Line- LAPD	0%
Silver Line- LASD	98%

LEGEND	
Los Angeles Police Department	
Los Angeles County Sheriff's Department	

### MONTHLY UPDATE ON TRANSIT POLICING PERFORMANCE - JUNE 2020

REPORTED CRIME			
CRIMES AGAINST PERSONS	LAPD	LASD	FYTD
Homicide	0	0	0
Rape	0	0	0
Robbery	2	0	56
Aggravated Assault	3	4	77
Aggravated Assault on Operator	2	1	13
Battery	8	11	251
Battery Bus Operator	4	3	66
Sex Offenses	0	0	31
<b>SUB-TOTAL</b>	<b>19</b>	<b>19</b>	<b>494</b>
CRIMES AGAINST PROPERTY	LAPD	LASD	FYTD
Burglary	0	0	0
Larceny	9	2	162
Bike Theft	0	1	12
Motor Vehicle Theft	0	0	2
Arson	0	0	0
Vandalism	2	4	56
<b>SUB-TOTAL</b>	<b>11</b>	<b>7</b>	<b>232</b>
CRIMES AGAINST SOCIETY	LAPD	LASD	FYTD
Weapons	0	0	14
Narcotics	0	3	78
Trespassing	0	0	6
<b>SUB-TOTAL</b>	<b>0</b>	<b>3</b>	<b>98</b>
<b>TOTAL</b>	<b>30</b>	<b>29</b>	<b>824</b>

LASD's Crimes per Sector		
Sector		FYTD
Westside	6	20
San Fernando	0	11
San Gabriel Valley	8	50
Gateway Cities	9	107
South Bay	6	94
<b>Total</b>	<b>29</b>	<b>282</b>

LAPD's Crimes per Sector		
Sector		FYTD
<b>Valley Bureau</b>		
Van Nuys	1	16
West Valley	1	9
North Hollywood	2	18
Foothill	0	5
Devonshire	0	4
Mission	0	5
Topanga	0	6
<b>Central Bureau</b>		
Central	1	84
Rampart	1	32
Hollenbeck	0	7
Northeast	1	8
Newton	2	43
<b>West Bureau</b>		
Hollywood	1	18
Wilshire	0	26
West LA	1	13
Pacific	1	6
Olympic	2	50
<b>Southwest Bureau</b>		
Southwest	11	81
Harbor	1	7
77th Street	0	74
Southeast	4	30
<b>Total</b>	<b>30</b>	<b>542</b>

ARRESTS			
AGENCY	LAPD	LASD	FYTD
Felony	2	6	116
Misdemeanor	1	11	638
<b>TOTAL</b>	<b>3</b>	<b>17</b>	<b>754</b>

CITATIONS			
AGENCY	LAPD	LASD	FYTD
Other Citations	0	11	762
Vehicle Code Citations	1	12	391
<b>TOTAL</b>	<b>1</b>	<b>23</b>	<b>1,153</b>

CALLS FOR SERVICE			
AGENCY	LAPD	LASD	FYTD
Routine	0	92	1,368
Priority	6	168	1,930
Emergency	0	16	214
<b>TOTAL</b>	<b>6</b>	<b>276</b>	<b>3,512</b>

DISPATCHED VS. PROACTIVE		
AGENCY	LAPD	LASD
Dispatched	19%	2%
Proactive	81%	98%
<b>TOTAL</b>	<b>100%</b>	<b>100%</b>

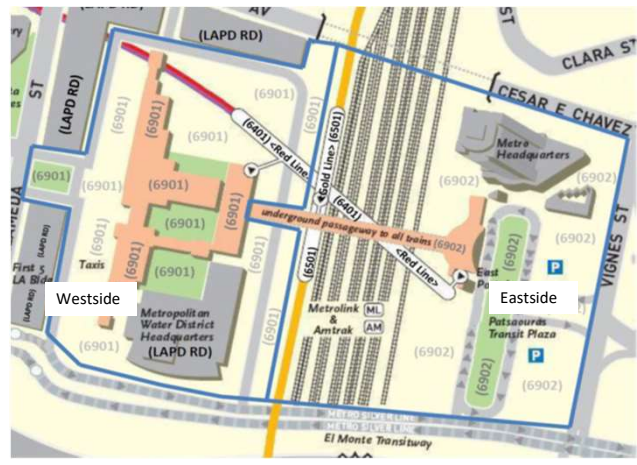
PERCENTAGE OF TIME SPENT ON THE BUS SYSTEM	
LAPD BUS	88%
LASD BUS	35%

LEGEND	
Los Angeles Police Department	
Los Angeles County Sheriff's Department	

# UNION STATION

## MONTHLY UPDATE ON TRANSIT POLICING PERFORMANCE - JUNE 2020

REPORTED CRIME		
CRIMES AGAINST PERSONS	LAPD	FYTD
Homicide	0	0
Rape	0	0
Robbery	1	10
Aggravated Assault	0	11
Aggravated Assault on Operator	0	0
Battery	3	85
Battery Rail Operator	0	0
Sex Offenses	1	7
<b>SUB-TOTAL</b>	<b>5</b>	<b>113</b>
CRIMES AGAINST PROPERTY	LAPD	FYTD
Burglary	0	1
Larceny	3	69
Bike Theft	0	7
Motor Vehicle Theft	0	0
Arson	0	0
Vandalism	1	8
<b>SUB-TOTAL</b>	<b>4</b>	<b>85</b>
CRIMES AGAINST SOCIETY	LAPD	FYTD
Weapons	0	0
Narcotics	0	0
Trespassing	1	54
<b>SUB-TOTAL</b>	<b>1</b>	<b>54</b>
<b>TOTAL</b>	<b>10</b>	<b>252</b>



ARRESTS		
AGENCY	LAPD	FYTD
Felony	3	50
Misdemeanor	7	178
<b>TOTAL</b>	<b>10</b>	<b>228</b>

CITATIONS		
AGENCY	LAPD	FYTD
Other Citations	2	239
Vehicle Code Citations	0	92
<b>TOTAL</b>	<b>2</b>	<b>331</b>

CALLS FOR SERVICE		
AGENCY	LAPD	FYTD
Routine	9	218
Priority	29	377
Emergency	0	19
<b>TOTAL</b>	<b>38</b>	<b>614</b>

DISPATCHED VS. PROACTIVE	
AGENCY	LAPD
Dispatched	25%
Proactive	75%
<b>TOTAL</b>	<b>100%</b>

PERCENTAGE OF TIME SPENT AT UNION STATION	
LOCATION	LAPD
Union Station	87%

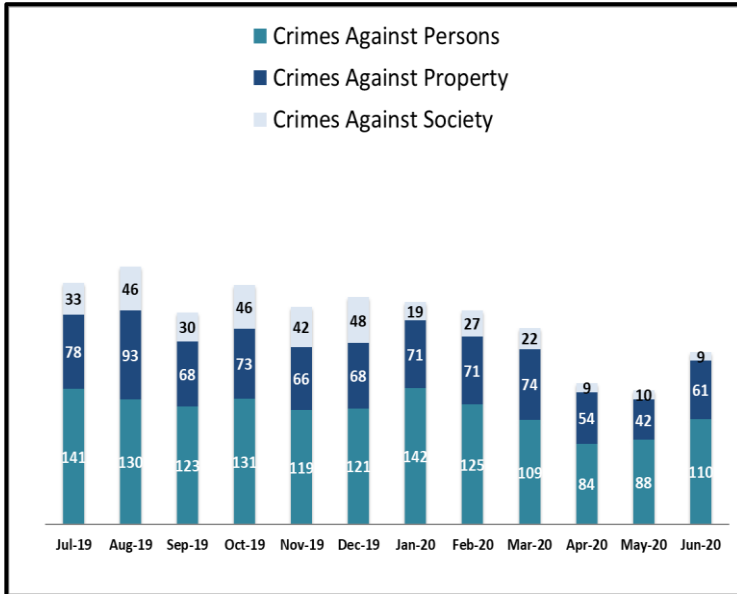
LEGEND	
Los Angeles Police Department	

# KEY PERFORMANCE INDICATORS

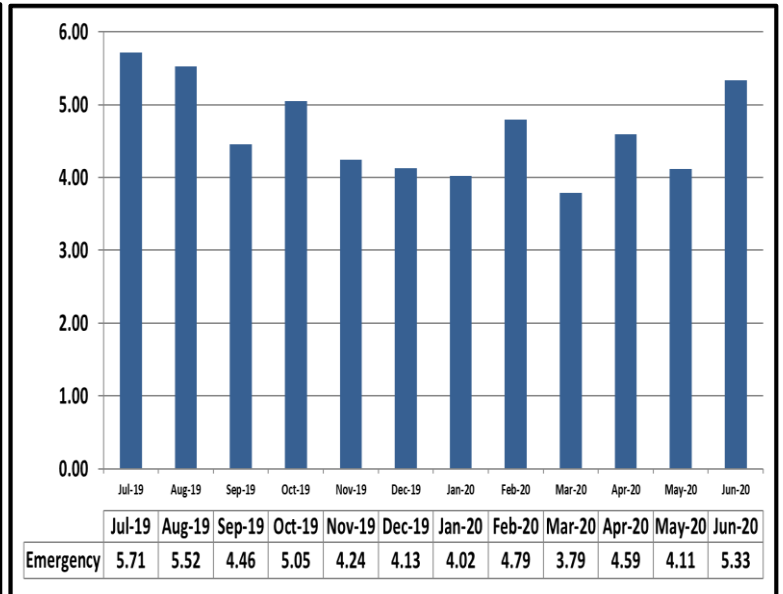
JUNE 2020

Attachment C

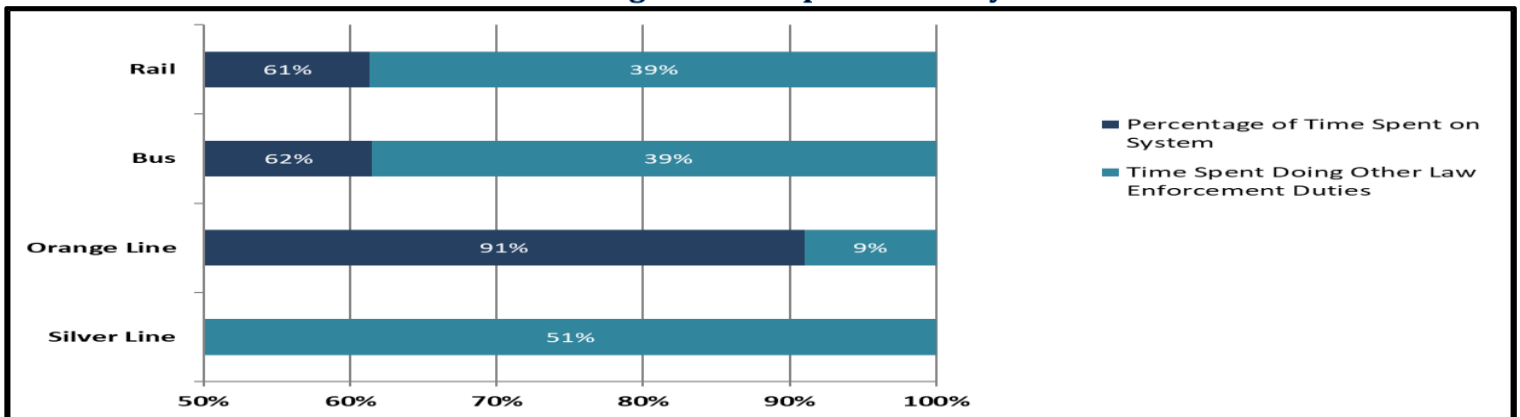
## Crimes Against Persons, Property, and Society



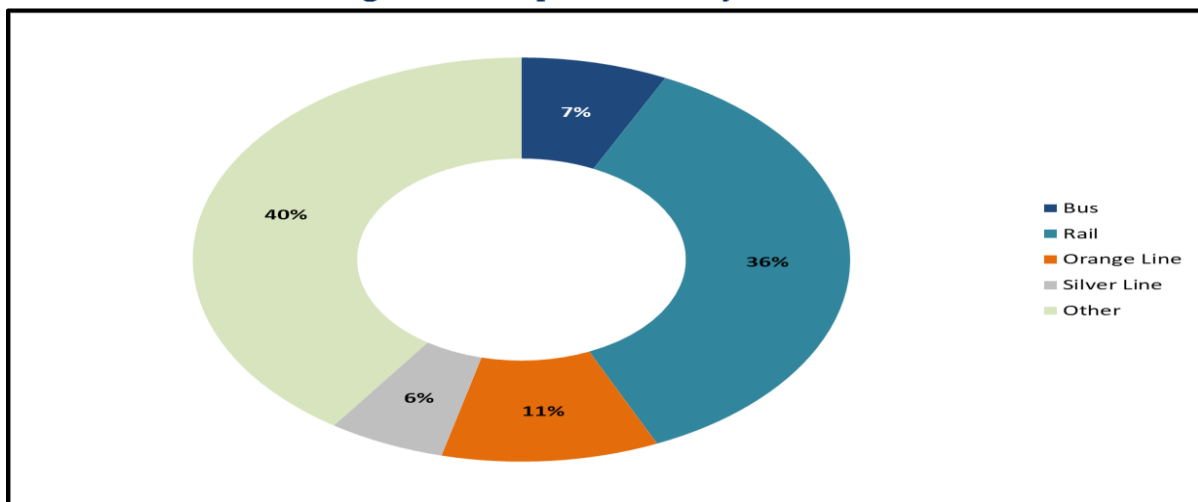
## Average Emergency Response Times



## Percentage of Time Spent on the System



## Percentage of Time Spent on the System as a Whole



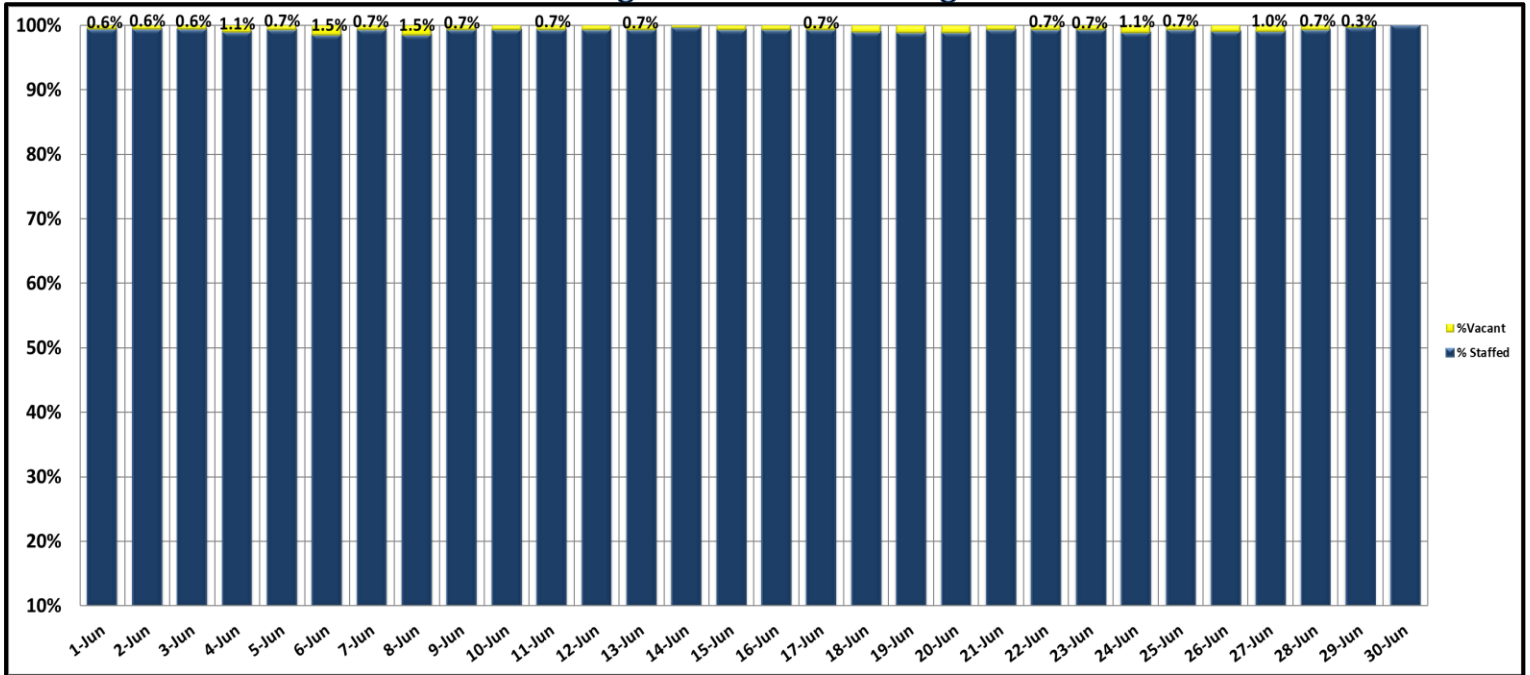


# KEY PERFORMANCE INDICATORS

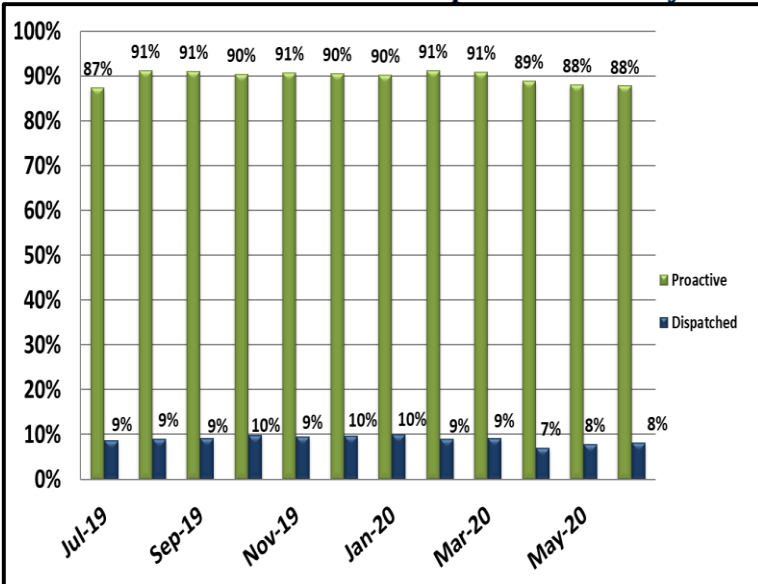
JUNE 2020

Attachment C

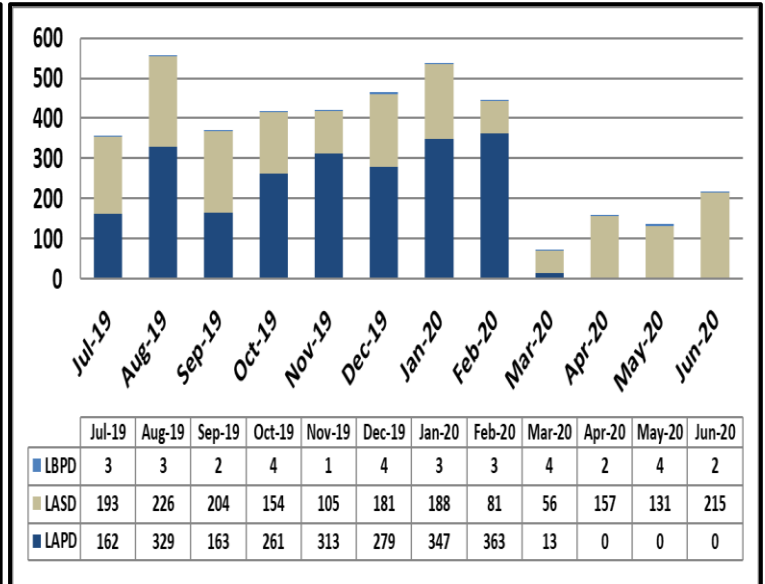
### Ratio of Staffing Levels vs Vacant Assignments



### Ratio of Proactive vs Dispatched Activity



### Grade Crossing Operations



Grade Crossing Operation Locations June:

1. Blue Line Stations (111)
2. Expo Line Stations (6)
3. Gold Line Stations (100)

# Transit Police

## Monthly Crime Report



Attachment D

	2019	2020
	June	June
<b>CRIMES AGAINST PERSONS</b>		
Homicide	0	0
Rape	0	0
Robbery	15	23
Aggravated Assault	24	14
Aggravated Assault on Operator	0	3
Battery	89	58
Battery on Operator	6	7
Sex Offenses	9	5
<b>SUB-TOTAL</b>	<b>143</b>	<b>110</b>
<b>CRIMES AGAINST PROPERTY</b>		
Burglary	1	0
Larceny	59	36
Bike Theft	7	3
Motor Vehicle Theft	1	0
Arson	0	1
Vandalism	23	21
Other	0	0
<b>SUB-TOTAL</b>	<b>91</b>	<b>61</b>
<b>CRIMES AGAINST SOCIETY</b>		
Weapons	1	1
Narcotics	14	5
Trespassing	5	3
<b>SUB-TOTAL</b>	<b>20</b>	<b>9</b>
<b>TOTAL</b>	<b>254</b>	<b>180</b>
<b>ENFORCEMENT EFFORTS</b>		
Arrests	393	82
Citations	1,556	76
Fare Checks	65,115	1,619
Calls for Service	1,164	1,210

# Monthly Update on Transit Safety and Security Performance

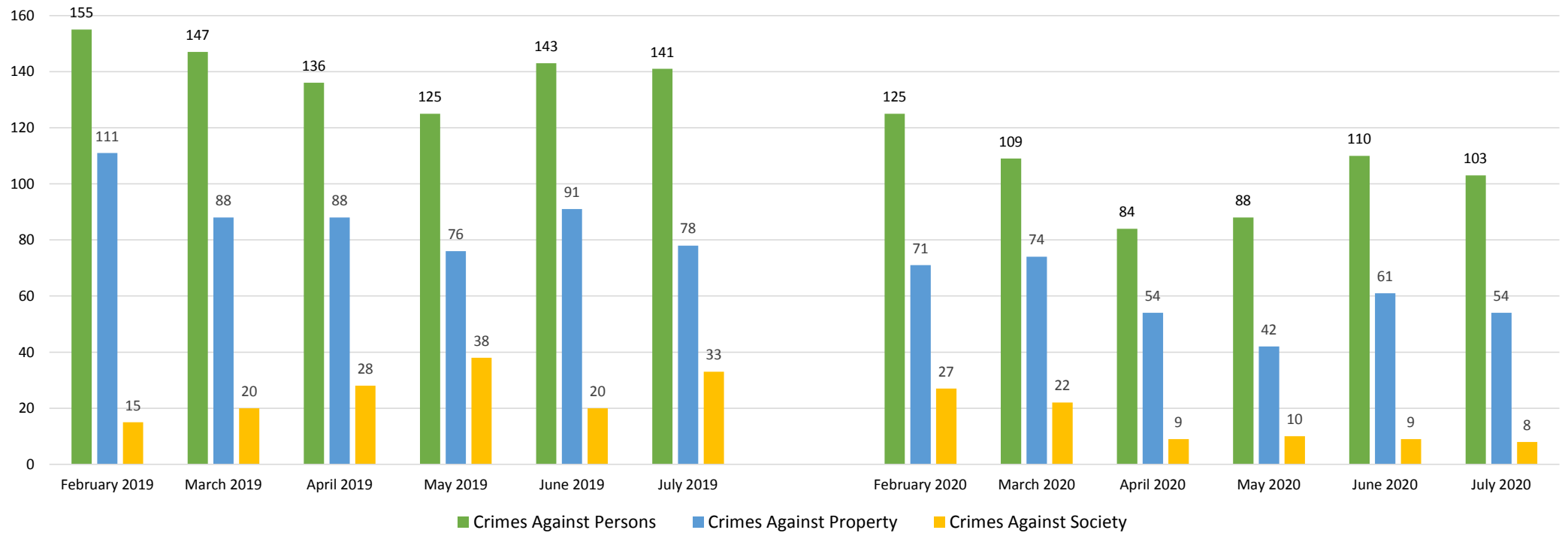
---

2020-0486

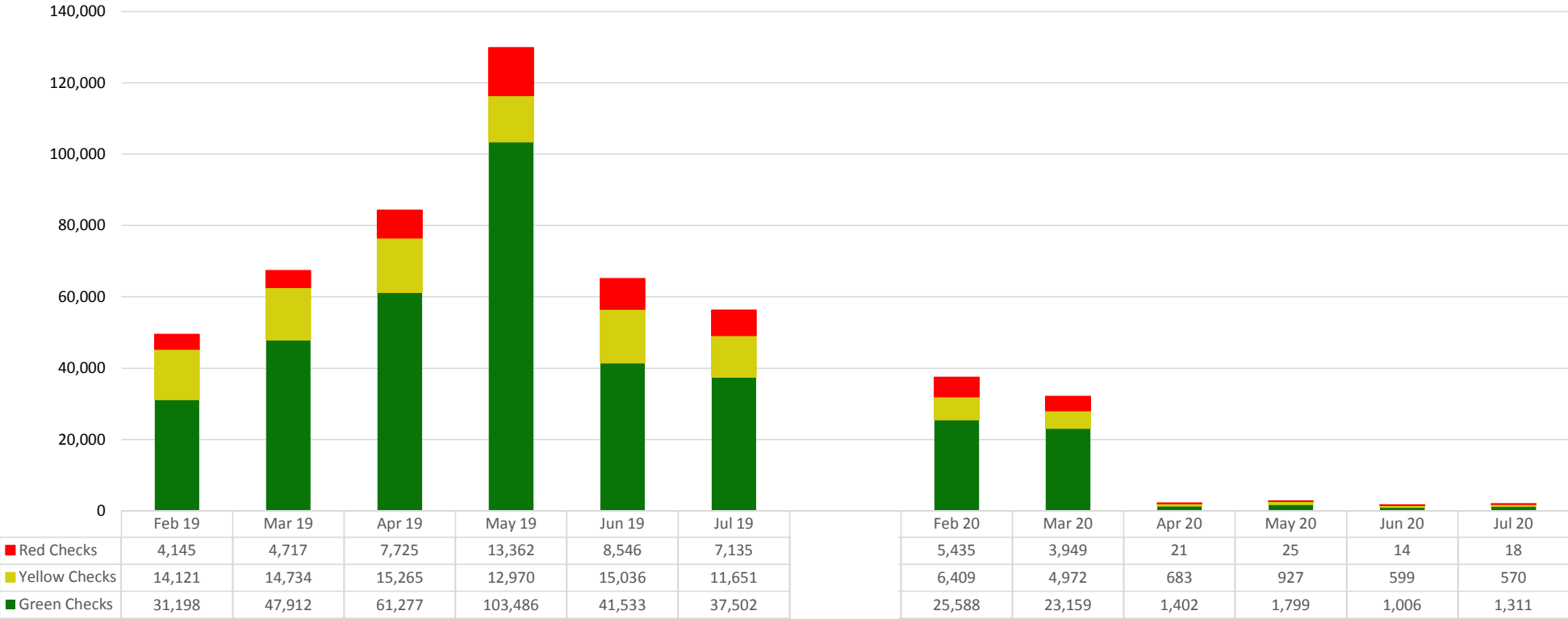
OPERATIONS, SAFETY, AND CUSTOMER EXPERIENCE COMMITTEE



# Crime Overview: 2019 vs 2020



# Fare Compliance: 2019 vs 2020





Divisions 1 and 2  
20 Encampment Fires since  
January 2020

---



## New Security Measures at Harbor Subway Station (Slauson/Western Ave)

A photograph of a transit station where a person in a blue shirt and yellow cap is handing a white face mask to another person. The background shows station infrastructure like turnstiles and signs.

# COVID-19 Response Activities & Grant News

Provided over 40,000 masks to Law Enforcement and Transit Security personnel use and to utilize as a de-escalation tool for Metro system patrons without masks.

Assisted with FEMA reimbursement application process for Metro's COVID-19 response and mitigation expenses, totaling over \$177 million.

Received a \$12.1 million grant for an enterprise video management system, a cyber-security assessment, and a facility hardening project.