



File #: 2021-0003, File Type: Oral Report / Presentation

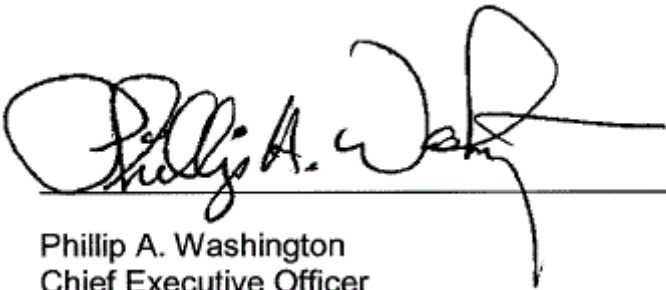
Agenda Number: 23.

**OPERATIONS, SAFETY, AND CUSTOMER EXPERIENCE COMMITTEE
MARCH 18, 2021**

**SUBJECT: ORAL REPORT ON COVID-19 SERVICE UPDATE/METRO RIGHT-OF-WAY JOINT
CLEAN-UP EFFORTS**

RECOMMENDATION

RECEIVE oral report on COVID-19 Service Update/Metro Right-of-Way Joint Clean-Up Efforts.



Phillip A. Washington
Chief Executive Officer

ITEM 23

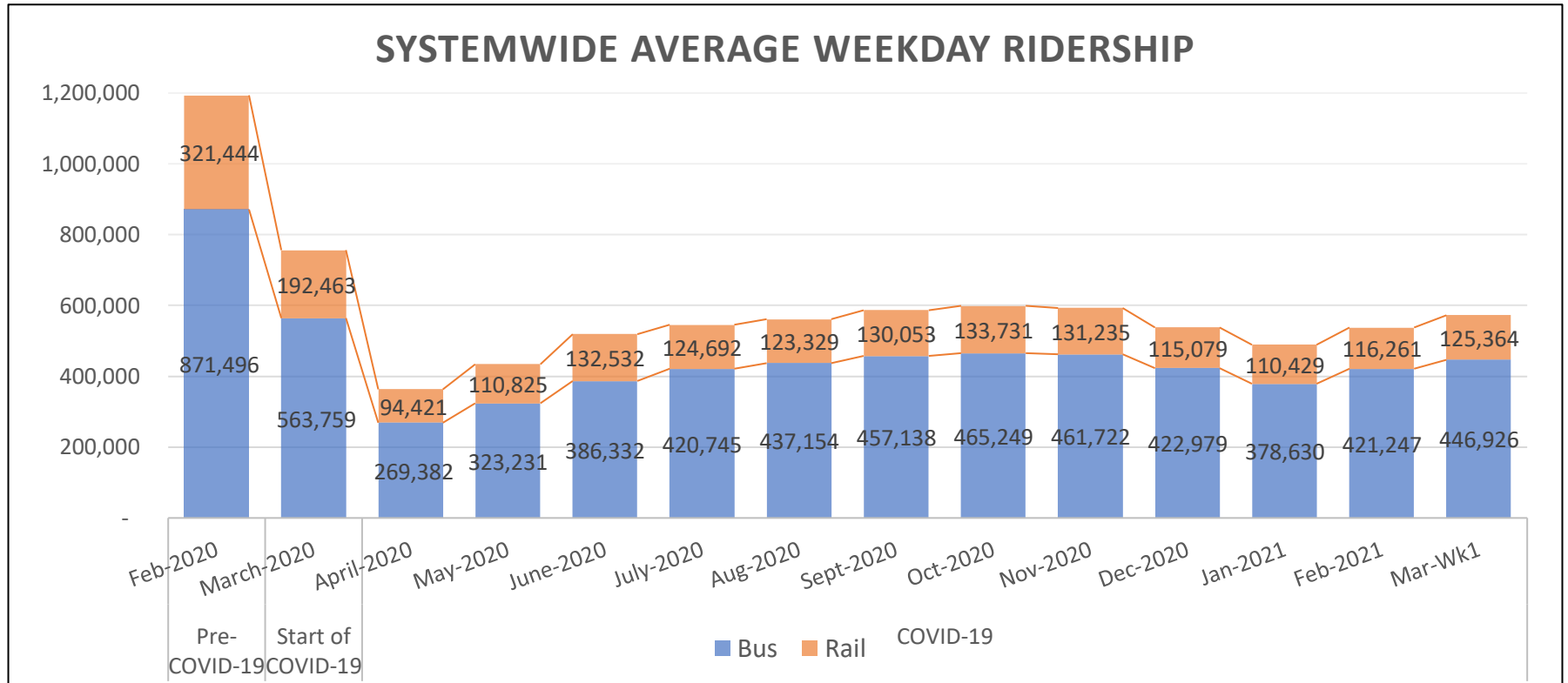
**COO Oral Report
COVID-19 – Operations Update**



Metro

Operations, Safety & Customer Experience Committee Meeting
March 18, 2021

Weekly Ridership Update



	Pre- COVID- 19	Start of COVID- 19												Mar Wk 1
Ridership	Feb-20	Mar-20	April-20	May-20	June-20	July-20	Aug-20	Sep-20	Oct-20	Nov-20	Dec-20	Jan-21	Feb-21	2/28-3/6
TOTAL	1,192,940	756,222	363,803	434,056	518,864	545,437	560,483	587,191	598,980	592,957	538,058	489,059	537,508	572,290

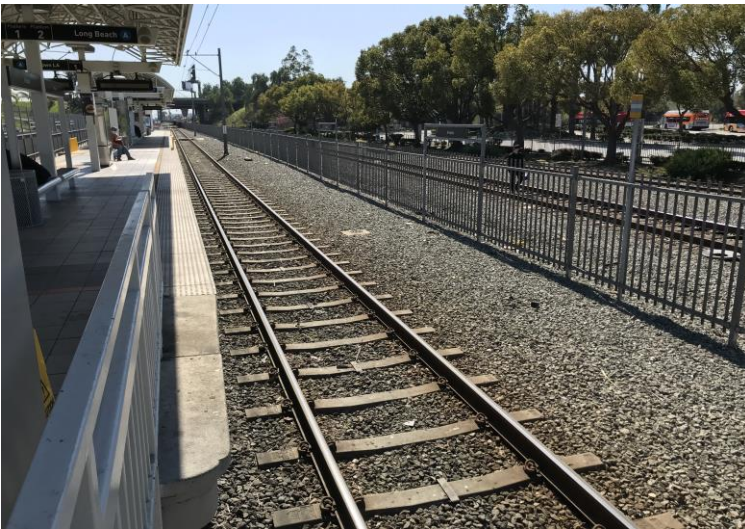
Notes

- 3/19/20 - Safer at Home Order Issued***
- 11/30/20 - Targeted Safer at Home Order Issued***
- 2/26/21 - Safer L.A. Order Issued***

Right-of-Way (ROW) Clean-up Efforts Update

Metro ROW

- Metro ROW maintenance services continue system-wide
- Homeless encampment clean-up efforts have been suspended due to COVID-19
- Metro continues to monitor the existing 12 active encampments within the Metro ROW, collaborate with external public and private stakeholders and evaluate safety and fire hazard conditions on a case-by-case basis



METRO A-LINE

Joint ROW Clean-up Efforts

Non-Metro ROW

- Metro FCM staff lead coordination efforts for a special clean-up of the Union Pacific (UP) ROW parallel and adjacent to Metro A-Line, from 24th Street to Metro A-Line Del Amo Station
- Clean-up began on February 9, 2021
- Work is anticipated to last eight (8) weeks
- This is a joint clean-up effort from the City of LA, LA County and UP
- Services being performed are graffiti abatement, trash & overgrown vegetation, and bulky item removal along UP ROW and adjacent properties often perceived by the public as Metro ROW
- To-date, 140 tons of trash and overgrown vegetation have been cleared
- This is the third special clean-up coordinated by Metro FCM staff along UP ROW
- Many Thanks to Metro partners within the City of Los Angeles, Los Angeles County and Union Pacific for their cooperation and teamwork
- Special Thanks to Metro FCM staff for continued commitment to provide excellence in services and support

Joint Clean-up Efforts of Union Pacific ROW Parallel to Metro A-Line ROW



Metro

Before

After