



Board Report

File #: 2021-0172, **File Type:** Informational Report

Agenda Number: 43.

**EXECUTIVE MANAGEMENT COMMITTEE
APRIL 15, 2021**

**SUBJECT: "UPLIFT THE HUMAN SPIRIT THROUGH METRO ART" REPORT
ACTION: RECEIVE AND FILE REPORT**

RECOMMENDATION

RECEIVE AND FILE report on initiatives launched in response to the "Uplift the Human Spirit Through Metro Art" Board motion (Attachment A).

ISSUE

At their June and August 2020 meetings, the Board directed staff to think about how artists might be included in the reimagining of transportation, and to report back to the Board in April 2021 on initiatives developed in response to this directive.

BACKGROUND

As Los Angeles County's cultural connector, Metro Art provides increased and equitable access to arts and culture for Metro's diverse ridership through programs that add vibrancy, identity and a sense of place.

LA County is recognized as one of the world's most important creative capitals and is home to an incredible range of remarkably talented artists and Metro has been at the forefront of interweaving art and transit and transforming quotidian commutes into pleasurable journeys. The agency has incorporated a small percentage (Attachment B) of transit construction costs to the integration of art into capital projects since the 1980s and has received significant recognition for the Metro Art program's interdisciplinary approach, broad range of artists commissioned, and its innovative, impactful community engagement. Strong support has been demonstrated by funding awarded by federal, state and local sources as well as the respect and care given the works by the public. Over half of the artists Metro Art has commissioned are artists of color.

Last year the Board recognized the arts as a way to bring people together in ways that are inspiring, welcoming, and add humanity to our public spaces, as well as the significant role the arts sector plays in our regional economy, and directed funding be allocated to commission local artists in ways that "Uplift the Human Spirit Through Metro Art." The motion formalized the role of the arts beyond transportation infrastructure through temporary exhibits such as onboard posters and digital displays, as well as programs that enrich the customer experience, advance cultural equity, and respond to

Los Angeles County's vast and evolving cultural landscape.

DISCUSSION

To be responsive to the issues and concerns of our time, and to address the Board motion, Metro Arts & Design staff commissioned local artists, poets, musicians, dancers and other creatives to develop original, culturally relevant artworks, as well as curated an imaginative cultural programming series of podcasts, playlists and live performances. Staff also included the Board approved guiding principles and policy directives to uplift the customer experience and expand the role of the arts beyond transportation infrastructure into the program policy as directed (Attachment C).

Metro work in this area has received several accolades-from our customers and beyond. Initiatives have been well received by customers as reflected in social media feedback and through increased followers. The Governmental Alliance on Race and Equity awarded Metro Art a Culture Innovation and Implementation grant to explore ways in which artists can participate in advancing Metro's goals toward increasing racial and cultural equity in transportation.

The initiatives also recently received national best practice recognition when Metro Arts & Design staff were invited to present ways in which Metro is using the arts to respond to COVID-19 and heightened systemic inequities at the Transportation Research Board's 100th Annual Meeting. The session attracted over 100 global attendees.

Initiatives include new onboard art posters and digital displays which balance health and safety messaging with timely artworks and add a sense of humanity of the system. And online exhibitions, tours, workshops artist interviews, and cultural programming (ranging from puppet shows to poetry readings to soundscapes) are engaging communities virtually during stay at home orders. A draft visual compilation of 2020/2021 initiatives which "Uplift the Human Spirit Through Metro Art" are outlined in Attachment D: Lookbook.

Moving forward, to assist with artist outreach and appropriately document and raise customer awareness and access to these programs one additional full-time contingent staff is necessary; funds are already included in the current and proposed FY22 budgets for this purpose and no additional funds are needed.

As LA County continues to reopen and ridership increases these programs will foster meaningful connections with the public as well as provide increased and equitable access to arts and culture for underserved communities. As the Board stated in their June directive, "the arts are a powerful means of bringing people together across borders of all kinds. Let us use this tragedy to help uplift the human spirit through art."

FINANCIAL IMPACT

Due to the financial crisis, staff reprioritized available resources and worked cross-departmentally last year to identify internal and external funding opportunities to support the Board directives. Funding for onboard and visual arts exhibition programs, partnerships, documentation and outreach is currently included in the proposed FY22 budget; in future fiscal years, when public gatherings are

considered safe, staff will allocate dedicated funding resources for expanded cultural programming and the performing arts.

IMPLEMENTATION OF STRATEGIC PLAN GOALS

The information in this Report supports Metro's strategic goals of delivering outstanding trip experiences for all users of the transportation system (goal #2) and enhancing communities and lives through mobility and access to opportunity (goal #3). This work aligns with Metro's Equity Platform, specifically Pillar Two: Listen and Learn, and Pillar Three: Focus and Deliver. Arts-based strategies will be utilized to improve relationships, partnerships and actions to advance more equitable transportation outcomes. Community-driven conversations will be used to develop best practices, inform strategic community-focused partnerships, and build capacity to better address the needs of historically underserved communities.

NEXT STEPS

Metro Arts & Design staff will continue to implement above initiatives and explore and implement innovative programs which provide greater access to arts and culture to our diverse ridership as well as ways in which artists can be included in the reimagining of transportation and will report back to the Board on these initiatives.

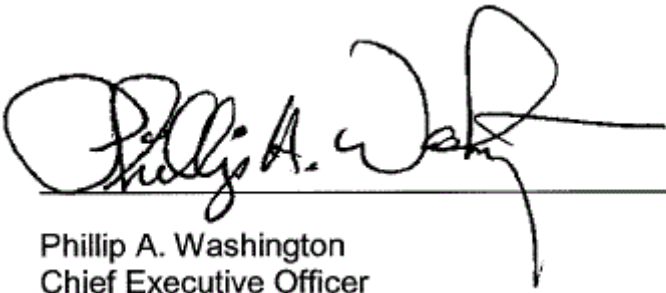
ATTACHMENTS

- Attachment A - August and June 2020 Board Directives
- Attachment B - Transit Agency Percent for Art Programs
- Attachment C - Metro Art Program Policy Update
- Attachment D - Uplift the Human Spirit Through Metro Art: Lookbook

Prepared by: Maya Emsden, Deputy Executive Officer (213) 922-2720

Reviewed by:

Yvette Rapose, Chief Communications Officer (213) 418-3154



Phillip A. Washington
Chief Executive Officer

Metro



Board Report

File #: 2020-0427, File Type: Motion / Motion Response

Agenda Number: 36.

**EXECUTIVE MANAGEMENT COMMITTEE
JUNE 18, 2020**

Motion by:

DIRECTORS BUTTS, SOLIS, GARCETTI, AND HAHN

Uplifting The Human Spirit Through Metro Art

On Saturday June 6th the L. A. Times published in its Saturday Section (F) 14 different artworks from different artists under the title “California Artists Express the Pain of Injustice.”

I’ve been periodically reminded by my staff that Metro has a long history in the forefront as a leader in integrating public art into transit construction projects. Our Metro Rail stations are famous for their artworks. We even have people taking tours of the station artworks.

As I mentioned in my State of the Agency remarks, we are currently faced with two concurrent tragedies and the artwork published in the Times spoke to the moment of the outpouring of grief and anger across our county and nation.

Mayor Garcetti spoke of re-imagining LA County transportation and I would propose that we consider ways in which the arts might play a role in that transformation that goes beyond transit infrastructure.

The Arts are a powerful means of bringing people together across borders of all kinds. Much of the inspiring news coverage/media attention at present is often about how the artists are expressing and conveying the longstanding pain of injustice.

As we are undertaking strategies to encourage people to return and use public transportation wisely and more often, I would like to see us explore ways to formally incorporate arts programming into areas beyond construction. As people ride busses and trains in this troublesome era, we should balance Metro safety messaging with welcoming creative artworks that mitigate anxieties and add a touch of humanity. Let us use this tragedy to help uplift the human spirit through art.

SUBJECT: UPLIFTING THE HUMAN SPIRIT THROUGH METRO ART

RECOMMENDATION

APPROVE Motion by Directors Butts, Solis, Garcetti, and Hahn that the Board direct the CEO to return in the August Board cycle with a Report back on how Metro can:

- Integrate Metro Art programs into our trains, busses;
- Champion artistic experimentation including provocative works that are responsive to the issues and concerns of our time; and
- Think about how artists might be included in the Reimagining of transportation



Board Report

File #: 2020-0566, **File Type:** Motion / Motion Response

Agenda Number: 45.1.

**EXECUTIVE MANAGEMENT COMMITTEE
AUGUST 20, 2020
REVISED**

Amending Motion by:

DIRECTORS BUTTS, GARCETTI, AND GARCIA

Related to Item 45: Report on Motion to “Uplift the Human Spirit Through Metro Art”

Metro staff has returned to the Board with an excellent response to the above Motion in so far as identifying immediate initiatives that can be implemented in the next six months including:

1. Champion artistic expression of local visual artists through posters within Metro’s allocation of advertising spaces, including on buses and trains, when/where space is available
2. Partner with community based cultural organizations to interpret and document this pivotal moment
3. Curate cultural programming to foster connections with the public, and
4. Commission local artists to creatively convey ‘new manners’, safety messaging and mobility.

While the report is very good as far as it goes, the Item before us is presented for information only with no financial funding being recommended.

We cannot accomplish the initiatives described above and create an inclusionary synergy with Metro’s Customer Experience “Surprise and Delight” program, including such aspects as Performance Art, without providing funding.

SUBJECT: AMENDMENT TO REPORT ON MOTION TO "UPLIFT THE HUMAN SPIRIT THROUGH METRO ART"

RECOMMENDATION

APPROVE Amending Motion by Directors Butts, Garcetti, and Garcia that the Board direct the CEO to initiate the following policy directives:

1. Instruct staff to return to this Board in September with a specific set-aside percentage of interior space on both rail and busses to accommodate the placement of Metro Art posters, with preference for local artists, as we have done in the past; and
2. Include in the FY 21 Budget \$400,000 dollars to accomplish the goals outlined above. Staff will reprioritize available resources and work cross-departmentally to identify internal and external funding opportunities to support the projects.

ATTACHMENTS

Attachment A - RBM Item 45.1 (Before Revision)

Examples of Transit Agency % for Art Allocations

Sacramento	2.0%
San Francisco	2.0%
Santa Clara	2.0%
Miami-Dade	1.5%
Portland	1.5%
Atlanta	1.0%
New York City	1.0%
Seattle	1.0%
Los Angeles County Metro	0.5%

FTA Circular 9400.1A recommends that transportation projects allocate “a minimum one-half of 1% of construction costs, but should not exceed 5% of construction costs”.

Los Angeles County is recognized as one of the world's most important creative capitals and is home to an incredible range of remarkably talented artists. Since the early 1980's, Metro has been at the national forefront of interweaving art and transit and transforming quotidian commutes into pleasurable journeys. The revisions below include recent Board directives and Guiding Principles.

Los Angeles County Metropolitan Transportation Authority Metro Art Program Policy

Metro Art is L.A. County's cultural connector providing increased and equitable access to arts and culture for Metro's diverse ridership through programs that add vibrancy, identity and a sense of place. Known for a broad range of artists who have been commissioned, Metro Art programs are also recognized for their innovative and impactful community engagement. Alongside a unique volunteer docent-guided tour program, Board-approved programs include percent-for-art, phased art asset management, onboard posters, and the performing arts. Together, these award-winning initiatives express the vibrancy and spirit of the region, elevate the customer experience, and include both emerging and established artists in the reimagining of transportation with the following Guiding Principles:

- Put people first
 - Uplift customer journeys and local communities through artistic expression
 - Provide paid opportunities for artists at all levels of their careers
 - Engage riders and stakeholders through shared sense of ownership
 - Provide workforce development and career pipeline opportunities
- Connect to creative communities throughout LA County
 - Celebrate connections to diverse local arts and cultural destinations
 - Present curated partnerships and sponsorships
 - Foster and facilitate arts tours and highlight creative communities
 - Facilitate creative outreach and engagement
 - Provide opportunities and technical assistance for local artists
- Champion innovation
 - Collaborate with internal departments to integrate the arts across transportation modes and initiatives
 - Leverage strategic funding opportunities
 - Support artistic experimentation
 - Explore new technologies and advance best practices

Metro Arts & Design oversees and directs all arts and cultural programs on Metro property and is the technical lead for all agency non-Metro property arts and cultural strategic initiatives. The department is also responsible for the implementation of the phased art asset management program. In accordance with FTA Circular 9400.1A (Design & Art in Transit Projects) and APTA SUDS-UD-RP-007-13 (Best Practices for Integrating Art Into Capital Projects), a minimum of 0.5% of construction costs for transit capital projects is allocated for public art. Real estate acquisitions, vehicle procurement, professional services, unallocated contingency, and finance costs are excluded from the calculation. The art allocation shall be used for artwork and may not be spent for other general Project costs such as signage, supergraphics, engineering, administration, overhead, cost overruns or betterments. When art replaces standard features (e.g. wall tiles, flooring, railings, etc) funds otherwise spent on those features shall be credited to the art budget. Where funding sources allow, funds may be pooled for more equitable distribution. Art program staff are engaged during early Project planning and are responsible for art program development and communications, as well as artist outreach and commissioning, for all Project delivery methods. Lessons Learned are incorporated into agency policies and procedures to ensure continuous improvement.


In 2020 the Board formalized the role of the arts beyond transportation infrastructure and directed funding be included in the budget to "Uplift the Human Spirit Through Metro Art," champion the visual and performing arts, with preference for local artists, through temporary programs, on-board posters and cultural programming that enrich the customer experience, advance cultural equity, and respond to Los Angeles County's vast and evolving cultural landscape.

Lookbook

Uplifting the Human Spirit
Through Metro Art 2020-2021

(in progress, **draft** as of March 2021)

“Uplift the Spirit Through Metro Art” (Board Directive, June 2020)

	Metro	Los Angeles County Metropolitan Transportation Authority One Gateway Plaza 3rd Floor Board Room Los Angeles, CA
Board Report		
<hr/>		
File #: 2020-0427, File Type: Motion / Motion Response	Agenda Number: 36.	
<hr/>		
EXECUTIVE MANAGEMENT COMMITTEE JUNE 18, 2020		
Motion by:		
DIRECTORS BUTTS, SOLIS, GARCETTI, AND HAHN		
Uplifting The Human Spirit Through Metro Art		
On Saturday June 6th the L. A. Times published in its Saturday Section (F) 14 different artworks from different artists under the title “California Artists Express the Pain of Injustice.”		
I’ve been periodically reminded by my staff that Metro has a long history in the forefront as a leader in integrating public art into transit construction projects. Our Metro Rail stations are famous for their artworks. We even have people taking tours of the station artworks.		
As I mentioned in my State of the Agency remarks, we are currently faced with two concurrent tragedies and the artwork published in the Times spoke to the moment of the outpouring of grief and anger across our county and nation.		
Mayor Garcetti spoke of re-imagining LA County transportation and I would propose that we consider ways in which the arts might play a role in that transformation that goes beyond transit infrastructure.		
The Arts are a powerful means of bringing people together across borders of all kinds. Much of the inspiring news coverage/media attention at present is often about how the artists are expressing and conveying the longstanding pain of injustice.		
As we are undertaking strategies to encourage people to return and use public transportation wisely and more often, I would like to see us explore ways to formally incorporate arts programming into areas beyond construction. As people ride busses and trains in this troublesome era, we should balance Metro safety messaging with welcoming creative artworks that mitigate anxieties and add a touch of humanity. Let us use this tragedy to help uplift the human spirit through art.		
SUBJECT: UPLIFTING THE HUMAN SPIRIT THROUGH METRO ART		
<u>RECOMMENDATION</u>		
APPROVE Motion by Directors Butts, Solis, Garcetti, and Hahn that the Board direct the CEO to return in the August Board cycle with a Report back on how Metro can:		
<ul style="list-style-type: none">• Integrate Metro Art programs into our trains, busses;• Champion artistic experimentation including provocative works that are responsive to the issues and concerns of our time; and• Think about how artists might be included in the Reimagining of transportation		

“The arts are a powerful means of bringing people together across borders of all kinds. Let us use this tragedy to help uplift the human spirit through art.”

“Devastating Impact to the Arts”

Brookings Report 8/12/20

- The creative economy is one of the sectors most at risk from the COVID-19 crisis
- California will be hit hardest in terms of absolute losses for creative industries and occupations
- Opportunities to develop strategies to hire local creatives and create online portals and platforms for local artists, musicians, and performers

Americans for the Arts Report 8/3/20

- 95% report income loss
- 62% have become fully unemployed
- 76% use their art to raise morale and create community cohesion

Metro Art Uplift Initiatives (2020-2021)

- Champion artistic expression through onboard posters and digital information kiosks.
- Curate cultural programming to foster connections with the public.
- Explore ways for artists to reimagine transportation.
- Partner with community-based cultural organizations to interpret and document this pivotal moment.
- Provide access to arts and culture for underserved communities.
- Support local artists.

Onboard Posters: Silver Linings

Local artists were commissioned to create original artworks that visualize and encourage expressions of connection and care to serve as reminders that acts of care, however large or small, are also essential and can be the silver lining on tough days.



Silver Linings Onboard Poster Artists 2020-2021





SILVER LININGS

Envisioned by Artist
STEPHANIE MERCADO

“The valuable services provided by essential workers and the power of arts and culture are heightened during challenging times.”

Visit metro.net/art



© 2020 Metro



SILVER LININGS

Envisioned by Artist
LAURA VAZQUEZ RODRIGUEZ

“Through the eye of the storm, we see glimpses of hope. We have opened our hearts and found new ways to express compassion and love.”

Visit metro.net/art



© 2020 Metro



SILVER LININGS

Envisioned by Artist
PHUNG HUYNH

“The astronaut rooster is a reminder that each dawn offers new possibilities, while the lotus flowering cactus symbolizes resilience, and that we can bloom where we are planted.”

Visit metro.net/art



PHUNG HUYNH



SILVER LININGS

Envisioned by Artist
CHRIS JOHANSON

“Color and visual rhythms speak to simultaneous individuality and co-existence. This snapshot of an upended, complex time holds pockets of joy and serenity.”

Visit metro.net/art



CHRIS JOHANSON



SILVER LININGS

Envisioned by Artist
ALFONSO ACEVES

"The music plays. The helping hand reaches out. The birds fly by. The flowers grow. The work of sharing joy continues. The community draws together. Our hearts beat for one another."

Visit metro.net/art



© 2011 Metro



SILVER LININGS

Envisioned by Artist
KASSIA RICO

"Created to uplift and bring joy to the community, the daily commuter and the city in which I was raised, this artwork celebrates relationships that get us through tough times."

Visit metro.net/art



© 2011 Metro



Silver Linings Artist-to-Artist Conversation: Laura Vazquez Rodriguez and Stephanie Mercado

Unlisted

13 views · Feb 23, 2021

Like 0 Comment 0 Share Save ...



Metro Los Angeles
20.2K subscribers

SUBSCRIBE

Creative expressions of connection and care are at the heart of Silver Linings, a Metro Art poster series by six local artists. This conversation features Laura Vazquez Rodriguez and Stephanie



bettyreznor

Congrats to @iluvpaper @phungxion @kalliarte for being showcased by @metro.art.la @metrolosangeles ! We need more beauty and visual interventions on public transit that represents our communities perspectives.



metro.art.la



metro.art.la If you've been riding the buses in the last week, you might have seen two new posters featuring images and...

“We need more beauty and visual interventions on public transit that represent our communities’ perspectives”

Metro rider

Onboard Posters: Through The Eyes of Artists

In the tradition of colorful travel destination posters, Metro Art commissions local artists to capture the magic of the cities and neighborhoods that Metro serves through their unique perspectives.





Willowbrook

Through the eyes of artist
April Bey

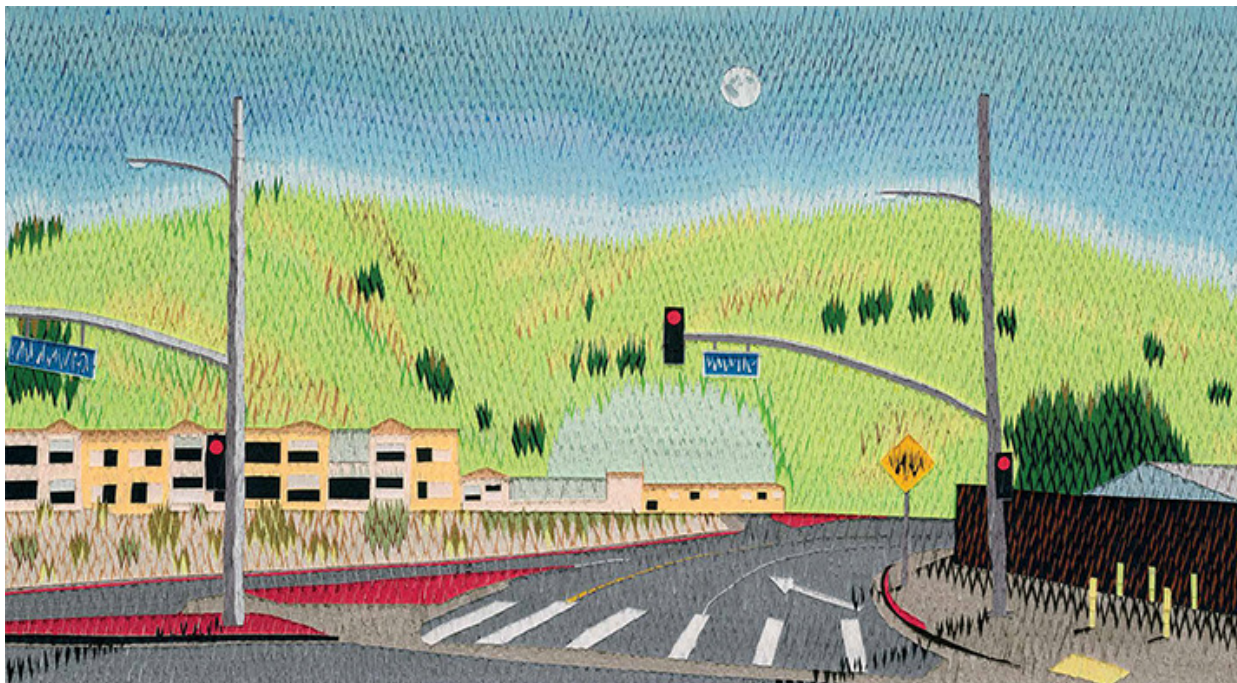
Fellow space travelers, outrageously dressed in pattern and color, wait for liftoff in Willowbrook as multiple suns shine brightly.

Visit metro.net and Go Metro to Willowbrook.



Metro

© 2014 MTA



El Sereno

Through the eyes of artist
Roberto Benavidez

The street and structures gently contrast with the natural lines of Ascot Hills Park in a cut-paper composition based on piñata-making techniques – a salute to the predominantly Latinx community of El Sereno.

Visit metro.net and Go Metro to El Sereno.

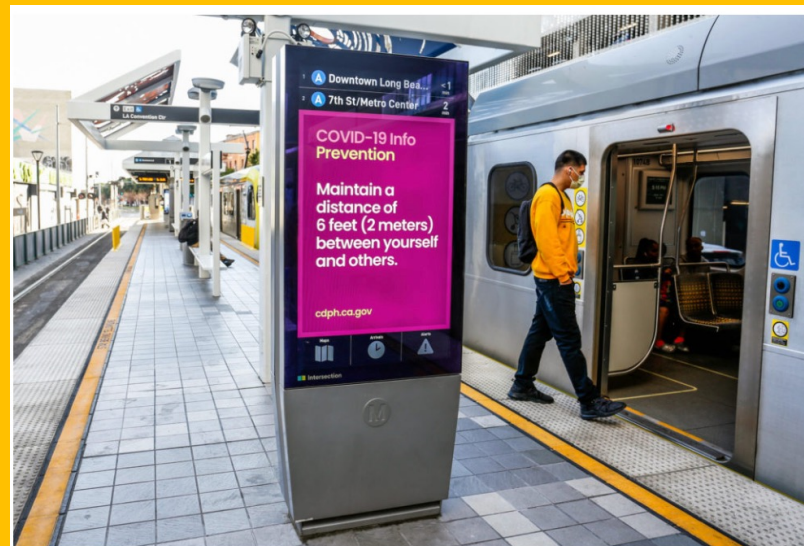


Metro

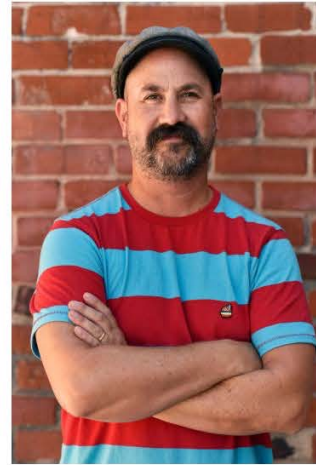
© 2014 MTA

Digital Displays: More People Than You Know

A rotating exhibition featuring portraits of Metro riders by local artists. The portraits are displayed on digital displays and rotate along with safety messaging, customer information and third-party advertising.



More People Than You Know Digital Portrait Artists 2020





“My mom has taken Metro to work since my family first immigrated here; at age 72, she still does. Sometimes, I would accompany her and we bonded on these trips. This portrait is one of the most personal works I have ever done. I wished to depict an older woman smiling, enjoying the ride, and passing on the ridership experience to the next generation.”

Bodeck Hernandez, *Legacy*



Eric Almanza, *Journey Home*



Bodeck Hernandez, *Legacy*



Daniel Barajas, *Roosters*



Jasmine Atienza, *Last Stop*



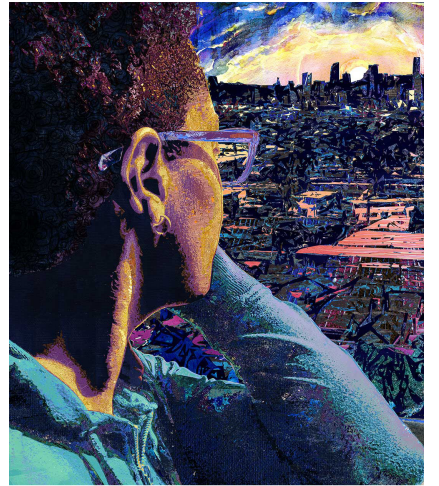
Angela Willcocks, *Kid*



Cat Ferraz, *Vovô Santinha*



Kristina Ambriz, *Wall of Concrete*



LP Aekili Ross, *Blue Sights*



José M. Loza, *Blue Line Ride- Memory & Perspective*



Dave van Patten, *Modern Prometheus*



Cody Lusby, *Playful Transportation*

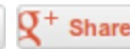


Alepis Hernandez, *Monday Morning*

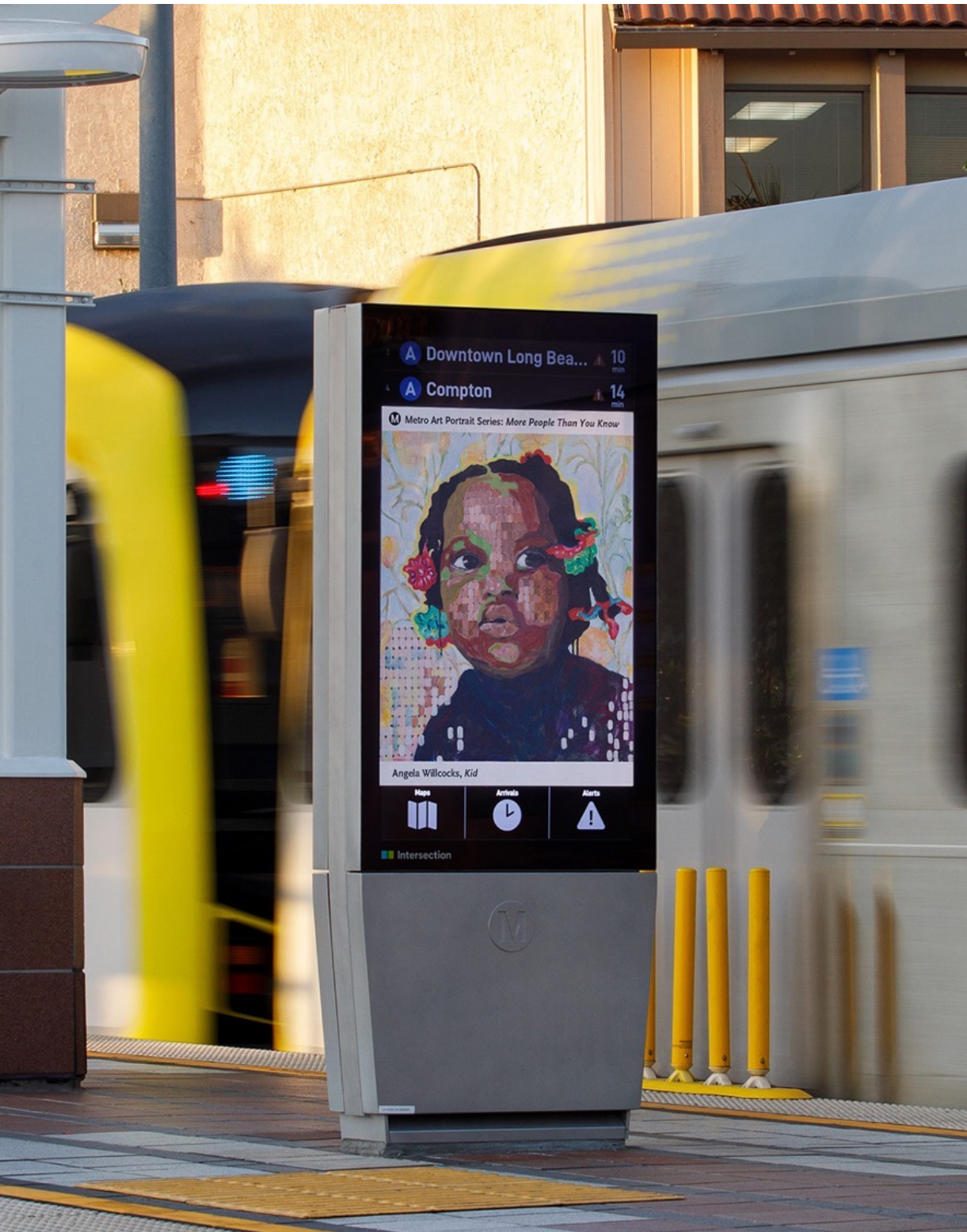
Metro's 'More People Than You Know' Art Series Displays Pride and Love for the Community

By Saybin Roberson, Contributing Writer

Published November 7, 2019



(L to R) Artists (Top) Jose M. Loza, Alespis Hernandez [her artwork shown], Wife of Cody Lushy, JP Ékili Ross's Fiance, and JP Ékili Ross (Bottom)



“Metro portrait series puts a face to communities along the Blue Line.”

Long Beach Post

New Portraits of Essential Workers/Riders, 2021



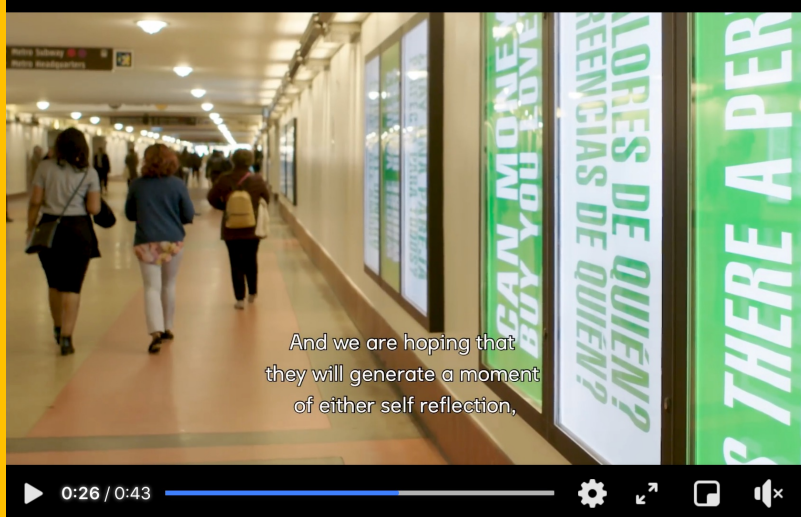
Javier Carrillo



Susu Attar

Art Lightboxes

Rotating exhibitions of artworks which engage a broad range of daily commuters.



Untitled (Questions) by Barbara Kruger, 2020



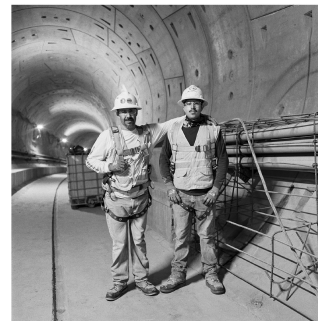
Deep Connections by Ken Karagozian, 2021



Ken Karagosian | Union Station Passageway Gallery

DEEP CONNECTIONS

Presented by **Metro Art** in collaboration with artist **Ken Karagozian**



Father and son, Abigaelio Ramirez and Abigaelio Ramirez Jr., pose in the tunnel entrance after working on concrete rebarry for the future station.
REGIONAL CONNECTOR, 2019



Alicia Gomez, Carpenter Apprentice, was encouraged by mentors to never give up on her goals.
REGIONAL CONNECTOR, 2019

Online Virtual Programming

(music, dance, poetry, art, workshops, tours, etc)

"I was very moved by this piece of art and can't stop thinking about it."

"Luv thissssss"



"Need this"

"This brings me so much joy"

"So alive, so LA."

"I love this"

"Goosebumps!"

"Shook me to my core. In a good way."



"What an honor to be a part of such an inspirational project that reflects love, hope and connection!"

"Something that I liked about the virtual tour was how the docent explained the relation between the artist, the art, and the community."

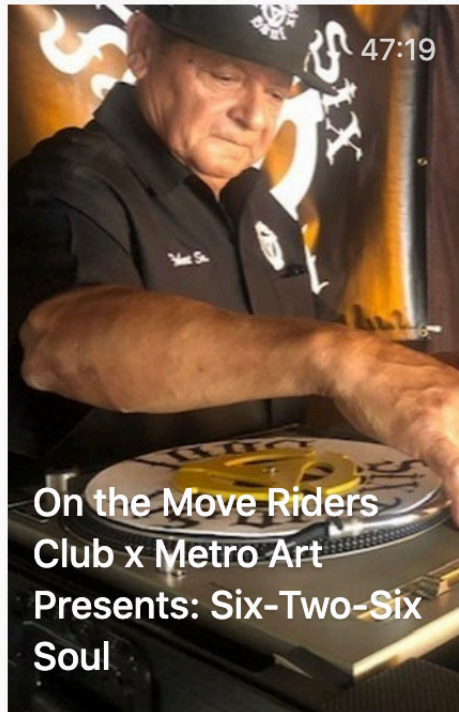
Welcome to a virtual art tour of the E Line



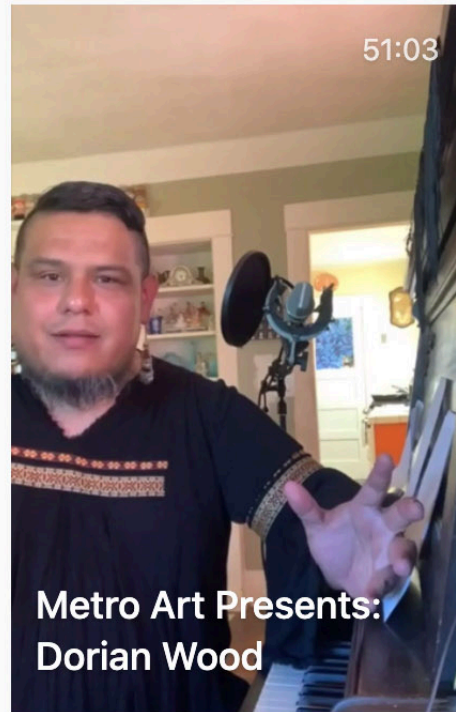
Led by Barbara Lashenick
Founder, Metro Art Docent Council



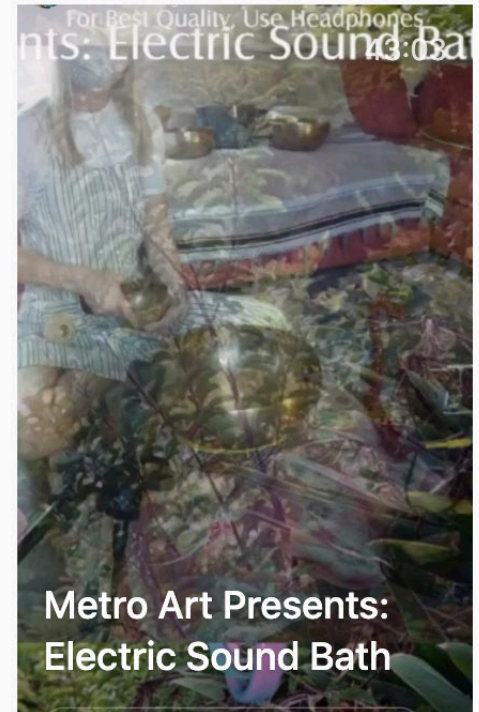
Metro Art Presents:
SOUNDMAPS with
Atomic Nancy



On the Move Riders
Club x Metro Art
Presents: Six-Two-Six
Soul



Metro Art Presents:
Dorian Wood



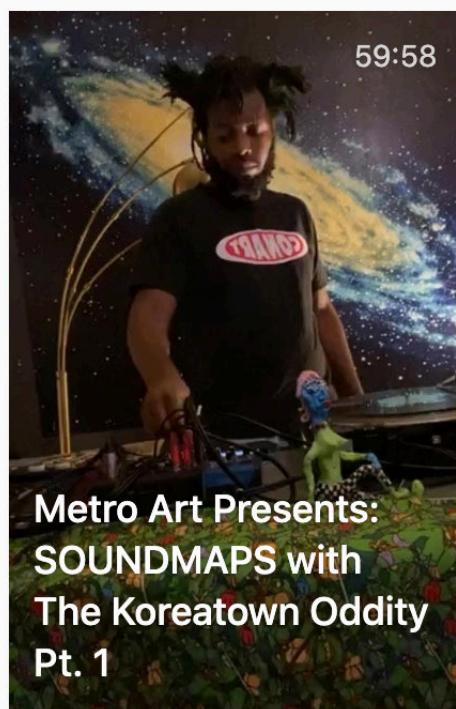
Metro Art Presents:
Electric Sound Bath



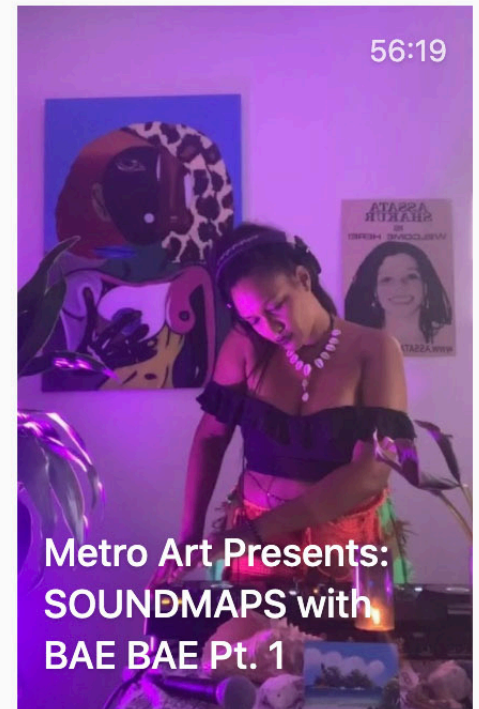
Metro Art Presents:
Mother's Day Concert
with Fabio Santana de
Souza



Metro Art Presents:
Salsa Dance
Workshop with
Dancing Diaspora
Collective



Metro Art Presents:
SOUNDMAPS with
The Koreatown Oddity
Pt. 1



Metro Art Presents:
SOUNDMAPS with
BAE BAE Pt. 1



metro.art.la • Following



metro.art.la *TONIGHT at 6:30PM on @metro.art.la IG LIVE!*

Metro Art is excited to present Dorian Wood for a remote solo concert on Friday 5/22 at 6:30pm of new and past work on voice and piano as an offering to this moment in our city.

The 45 minute set will be live on our [#MetroArtLA](#) Instagram page at the magic hour from Dorian's home in Eagle Rock—not Union Station as originally planned.

Please join us with the intention of remembering that we will come together again in the future at Union Station, one of LA's **essential** and treasured public spaces.



66 likes

MAY 22, 2020

Add a comment...

Post



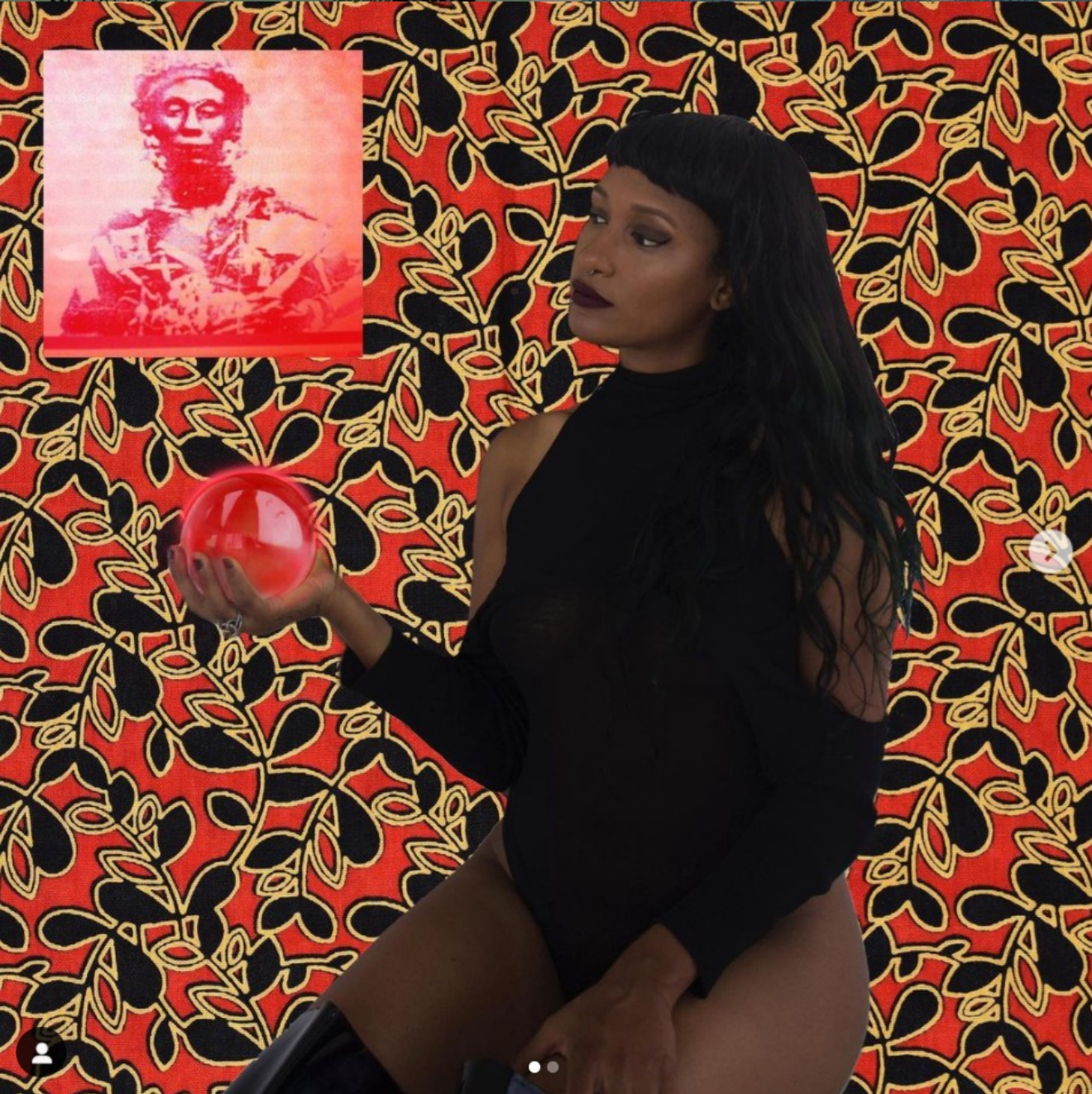
↻ Joseph Rios Retweeted



LA Metro  @metrolosangeles · May 5

Check out the amazing poem "Ode to the Essential" by Joseph Rios ([@JosefoBear](#)) for [@Poetry_Society](#) and Metro Art. The poem is dedicated to Metro's workers and riders during the quarantine of 2020.





metro.art.la • Following
Leimert Park, Crenshaw District, La



metro.art.la *Soundmaps* is a place-based DJ series on Metro Art's IG Live in June on 3 Fridays from 3 historic LA neighborhoods.

For the final night on Friday, June 19, DJ and multidisciplinary artist BAE BAE (@baexploitation) presents a two-hour set from her home in Leimert Park to celebrate Juneteenth and the living landmarks and locations that uplift Black music, community and freedom in Los Angeles.

Metro Art Presents: *Soundmaps* w/
BAE BAE
June 19 | 7-9 p.m.
IG Live: @metro.art.la

"Leimert Park has always been the



117 likes

JUNE 17

Add a comment...

Post

METRO ART
PRESENTS

Tuesday,
07.21.20

12-1PM

deep

with

dublabb

Episode #3:
The Crenshaw Continuum

with
Ava DuVernay
Azar Lawrence
Ben Caldwell
Def Sound
DJ El Ray

DJ Al Jackson
Dwight Trible
Jimetta Rose
MC Myka 9
& VerBS



Metro Regional Connector

3 hrs · 🌐

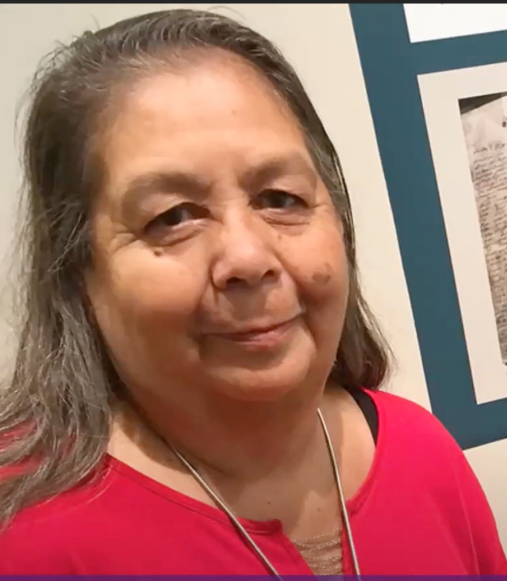
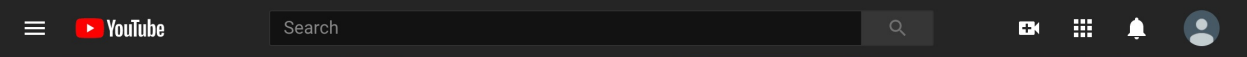
Metro Art Presents puts its focus on the historic location of Atomic Cafe for its second *Soundmaps* featuring two live-streamed DJ sets from Atomic Nancy and Francesca Harding representing different eras of the building on Instagram Live.



THIS FRIDAY AT 7 PM

Metro Art Presents: Soundmaps w/Atomic Nancy + Francesca Harding

Online Event



Language


The Tongva language derives from Uto-Aztekan family, where the English words tomato and coyote derive.

speakers, pronunciation what remains future generations

Among the consequences of forced assimilation is the loss of indigenous language. Language is one of the strongest ways to connect with one's culture.

Many contemporary city names derive from Tongva names, such as Pacoima, Azusa, Tujunga, Caluenga, and Topanga. Santa Monica has a street named Moomat Ahiko Way which means "Breath of the Ocean." Santa Monica's Tongva name is Kecheek.

The last native Tongva speaker passed away in the 1970s and today there are no fluent



Tongva photograph: San Gabriel Mission (1846)





MetroArtLA
C Line (Green) Artist Interviews

6 months ago

#Storytelling

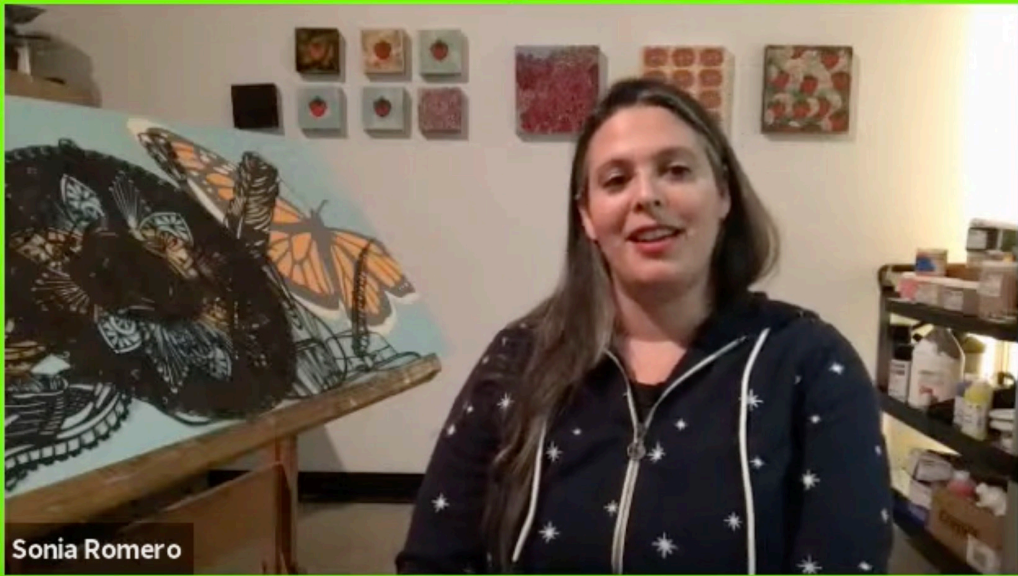


6:09

M 1 John Outterbridge on "Pyramid" (Avalon Station)

▶ 42

Artist Lab: In the Studio with Artists Sonia Romero and Wayne Perry



Sonia Romero



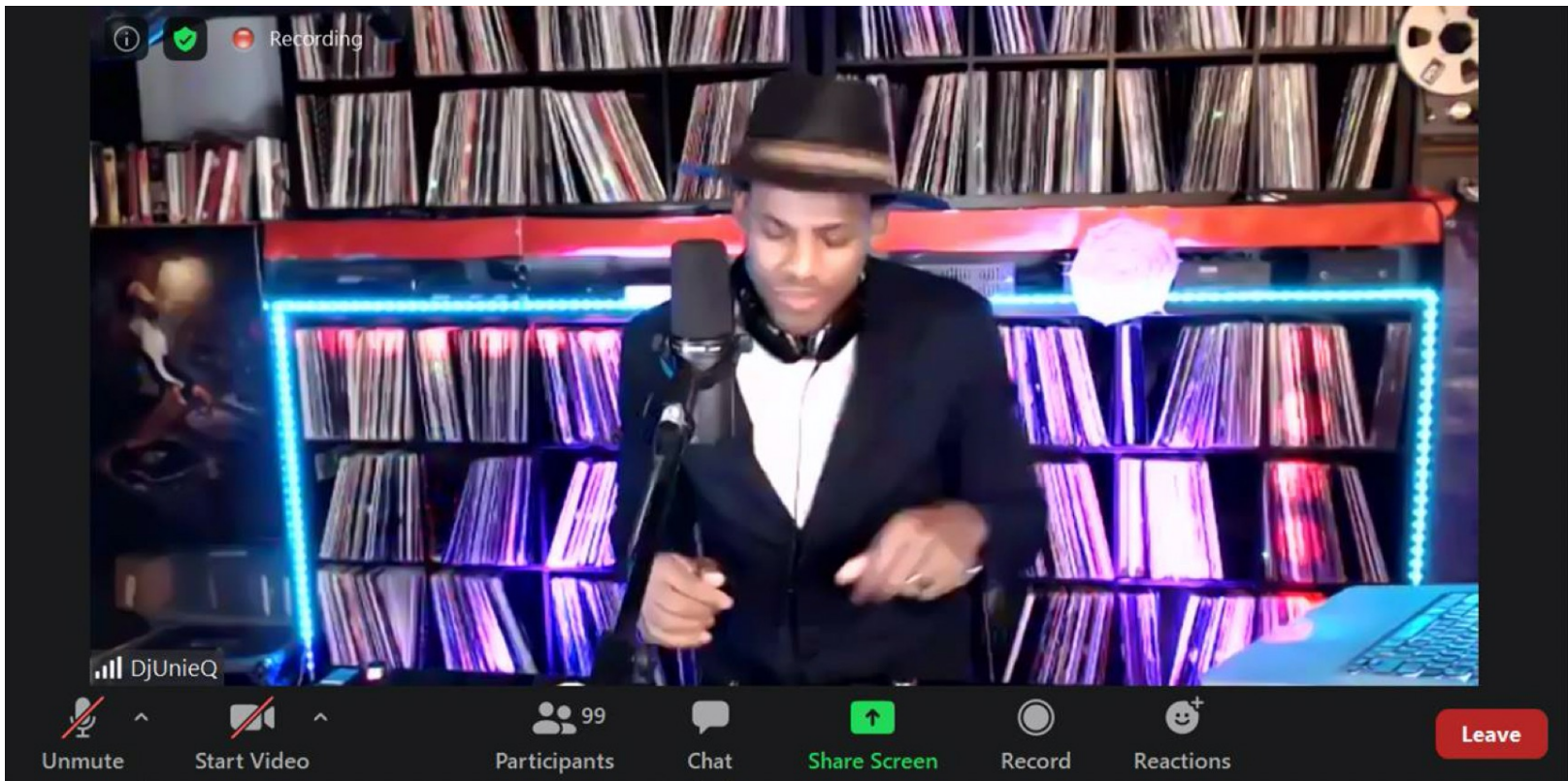
Wayne Perry

zoom

8:06 / 56:20

Scroll for details





“El Camino de Vermont,” an imaginative procession along Metro Line 204 (with bonus performance of “Tio Metro”)

BY MARYAM HOSSEINZADEH , DECEMBER 4, 2020



Metro Art Presents: Bob Baker Puppet Show Tour of Union Station



Metro Art Presents: **Waiting in the Light Soundscape** by Nailah Hunter

March 1-April 26, 2021 (inspired by the morning light in Union Station)



Metro Art Presents: Moving Through: A Month of Dance & Movement

Thursdays at 7pm during month of April



% for Art: Artist-led Community Engagement



Caminantes

by Olga García Echeverría

We build as we walk / and as we walk we weave words into existence / create meaning in our steps / I We You / We Our Us / Somos seres / Caminantes

The proud Mexican Honduran hija / the daughter of African and American parents / She is the stripes / the blue to white / white to blue / descendant of Salvadoran raíces / And you? ¿Quién eres? / I am a lion / hunted by something (I can't put my finger on it) ¿Y él? / He's the mysterious blank page / The student who writes invisible odes / ¿Y ella? She is the ocean dangerous and huge / loud frightening waves / and then / the silent sound comes / as the waves recede to the / horizon calmly

The natural world knows no bounds

Everything changes / summer gives way to winter / nothing is forever / Life: not guaranteed Atrocious / the world can be quite atrocious / I wish I could abolish ICE / My heart is a dark rainy forest / My hoodie helps me feel safe

At times, the moon shines no light on us / yet / we shimmer in darkness / we say don't let anyone steal your joy / Remember somos caminantes / we create as we go as we imagine / we say / be a storm – clouds get to release everything be molten rock erupting from the earth's crust – red, glassy, luminous be a cheetah in the wilderness of the city / a dolphin diving water deep / Be blessed in the daily / in the unassuming wealth we carry / My poor parents gave me everything No forks or knives for pupusas needed / Within every laughter, a universe of alegría / Look I'm skating / I'm bumpin tunes / chillin on my board / I'm poppin kickflips with the homies

I feel free

Even as plagues rage and cage / we morph wonders / You shed skin / She grows wings He shape-shifts / I found love locked inside home / Even when / the fear crawls beneath my skin / my courage comes to me gradually / Listen / my ancestors are DJing for me from the stars / Mi corazón busts out all my favorite jams / My heart is a stereo as I pulse forward / poet / dream / walk ...

This poem contains words borrowed from poems by students in Stacy Milsap's Great Books class, Fairfax High School: Cynthia Alvarez-Mendez, Christopher Aquino, Yesenia Aragon, William Blanco, Rakon Branche, Ahmad Brooks, Matthew Cabrera, Jonathan Chung, Charlette Diaz, Chiana Eisner, Julio Espana-Lorenzo, Precilla Flores, Nancy Garcia-Lagos, Melyssa Hernandez, Jahnathan Jones, Olivia Matsunaga, Dayana Morales, Leynie Salguero-Verde, Aminata Sene, Albert Villasenor



Soo Kim

November 12, 2020 · 🌐



Hello friends!

I hope you'll consider participating in my text project. It's part of a larger work, a commission by LA Metro for the Purple Line subway station. Deadline is rolling but hoping to launch first look at this at the new year!... [See More](#)

I remember daydreams of being a singer all alone on a big stage with no scenery, just one spotlight on me, singing my heart out, and moving my audience to total tears of love and affection.

I remember realizing someone loved me, and having a hard time believing it.

A city is made up of the past and present, of memories as much as concrete, just underneath the city's surface dwell stories and mysteries to be discovered. It is these stories and memories I hope to make visible and share with the larger public through a text-based work online.

As part of a project for LA Metro's Purple Line subway station, I am making a text-based work made up of contributions from friends, strangers, friends-of-friends, you -

If you would like to participate, please DM me or reply here with your text that begins with the phrase "I remember". You can include a first name, or a last name, or not both. All contributions will be used anonymously, and the project will be presented as a text by many authors.

+6

👍❤️👤 60

72 Comments 2 Shares

👍 Like

💬 Comment

➦ Share

View 29 more comments



“Being of African-American descent, like many people of various colors and races at that time, you tended to live in designated areas of the city . . . I think the automobile gave my parents the mobility and courage to venture further West and South of the downtown core of Los Angeles. Yet for me, it was public bus transportation that took over the role of the Red Car in my quest to become the more diverse or varied Angeleno that I have become which at the time I did not know it was happening . . . It allowed me to see LA County as a microcosm of the larger world.” – Calvin Harrison

Staff in Field



Recognition, Feedback, Awards

Nearly 100 artists, cultural leaders and community members have been part of Uplifting the Human Spirit Through Metro Art over the past year.

Feedback from our customers, the media, and both the creative and the transportation fields has been positive and the programs well-received.

Uplift initiatives have supported the Board directives in providing access to arts and culture for underserved communities, supporting local artists, partnering with community-based cultural organizations and fostering meaningful connections with the public.



LOCAL AND REGIONAL
GOVERNMENT ALLIANCE ON
RACE & EQUITY

(Awarded Cultural Innovation Grant)

Los Angeles County
Metropolitan Transportation Authority

Call to Artists

Southeast Los Angeles artist-led, community-engaged cultural asset mapping

Application Deadline: April 4, 2021

NOS VEMOS / WE SEE US



© Ralph Godoy



TRB 100th Annual Meeting (2021)



Art, COVID-19, and Equity panel presentation on Uplifting the Human Spirit Through Metro Art attracted over 100 global attendees.

Featured in National Publication

FORECAST



4/13

Welcome

Table of Contents

from the Guest Editor

Charles T. Brown, MPA, CPD, LCI

Construction Mitigation

FORWARD: Issue #2: Transportation



**Facing Challenges
Addressing Equity in
Transportation**

KCWR Pick of the Week

1-2-3-4  **5 Things to Do**

2020/2021 Awards include



Communication Arts (national)

AI-AP

American Illustration/Photography (national)

Other Metro Art Programs

Percent for Art (Board adopted)

Phased Art Asset Management (Board adopted)

Artist Outreach/Workshops

Cultural Asset Mapping

Youth Engagement Programs

Art Asset Management & Repairs (A Line)



Station Art Installation (2020/2021)



Sonia Romero | *Hecho a Mano* | Mariachi Plaza Station

Station Art Installation (2020/2021)



Ned Kahn | *Wind Bridge* | Patsaouras Plaza Bus Station

Station Art Fabrication (2020/2021)



Ingrid Calme | *Talking Drums* | Leimert Park Station (underway)

Station Art Fabrication (2020)



Shinique Smith | *Majestic Heights* | MLK Station (underway)

Station Art Installation (2021)



Walter Hood | *Saint Monica's Tears* | Downtown Santa Monica Station (underway)

Artist-led engagement/cultural partnerships



Artist Rebeca Mendez (Expo/Crenshaw Station) student workshop (early 2020)

Artist Construction/Design Review Submittals



Done remotely during the pandemic

Artist Construction/Design Review Submittals



Staff studio visits in PPE

Youth Program: Student Art Contest



Crenshaw/LAX Neighborhood Student Art Contest

Invitation to High School Students

[SUBMIT YOUR ART!](#)



Artist Pool 2020 Open House | Armory Center for the Arts

Metro programs that work toward racial justice

BY STEVE HYMON , JUNE 26, 2020

LA Metro, quite understandably, has been fielding questions recently about our agency’s diversity, equity and inclusion initiatives. People want to know what we’re doing to improve racial justice and fix longstanding inequities in the communities that we serve — and within our agency.

The good news is that LA Metro, in fact, has many initiatives that have been underway. Some key ones are of a more recent vintage but others date back to the 1990s. We’re proud of that but with this caveat: Metro recognizes there is still plenty of work to do. This is especially the case in historically and currently marginalized communities where many residents are people of color.

>>>

>>>

>>>

Metro Art is L.A. County’s cultural connector. We seek to provide increased and equitable access to arts and culture for our diverse ridership and to move people through the arts. Our projects and programs reflect our communities because we actively, intentionally and proudly pursue a path of inclusion. Metro Art commissions artists at all career levels, and we have created technical assistance initiatives and career pathway opportunities that have led to broader diversity at our own agency and within the field. Over half of the artists Metro Art has worked with represent Black, Indigenous and people of color communities. While we partner with arts and community-based organizations and continue to place community voices at the forefront of our work, there is still more work for us to do. We invite you to learn more about Metro Art’s impact and join us on this journey at metro.net/art and on Instagram [@Metro.Art.LA](https://www.instagram.com/Metro.Art.LA).

