



## Board Report

---

**File #:** 2023-0112, **File Type:** Informational Report

**Agenda Number:**

---

**REGULAR BOARD MEETING  
MARCH 23, 2023**

**SUBJECT: MONTHLY UPDATE ON PUBLIC SAFETY**

**ACTION: RECEIVE AND FILE**

### **RECOMMENDATION**

RECEIVE AND FILE the Public Safety Report.

### **ISSUE**

Metro's main priority is providing riders with a safe experience and employees with a safe work environment. Metro is researching, listening, reassessing current safety programs, and launching new safety initiatives. This report provides a report on the state of safety at Metro, including data, current safety initiatives, and other safety related information.

### **BACKGROUND**

Metro's mission is to provide a world-class transportation system that enhances the quality of life for everyone living, working, and playing in LA County. Metro has implemented several non-law enforcement initiatives to reimagine public safety. The Chief Safety Office is responsible for the public safety program's strategic and cohesive deployment. Through agency collaboration, the focus is to increase a safety presence on the system, protecting Metro riders, employees, and infrastructure and conducting fare and code enforcement. Furthermore, the Chief Safety Office oversees safety programs and tools such as Respect the Ride, the Transit Watch app, the Employee Assault Mitigation Task Force, and other efforts that are responsive to the security needs of riders and employees.

### **DISCUSSION**

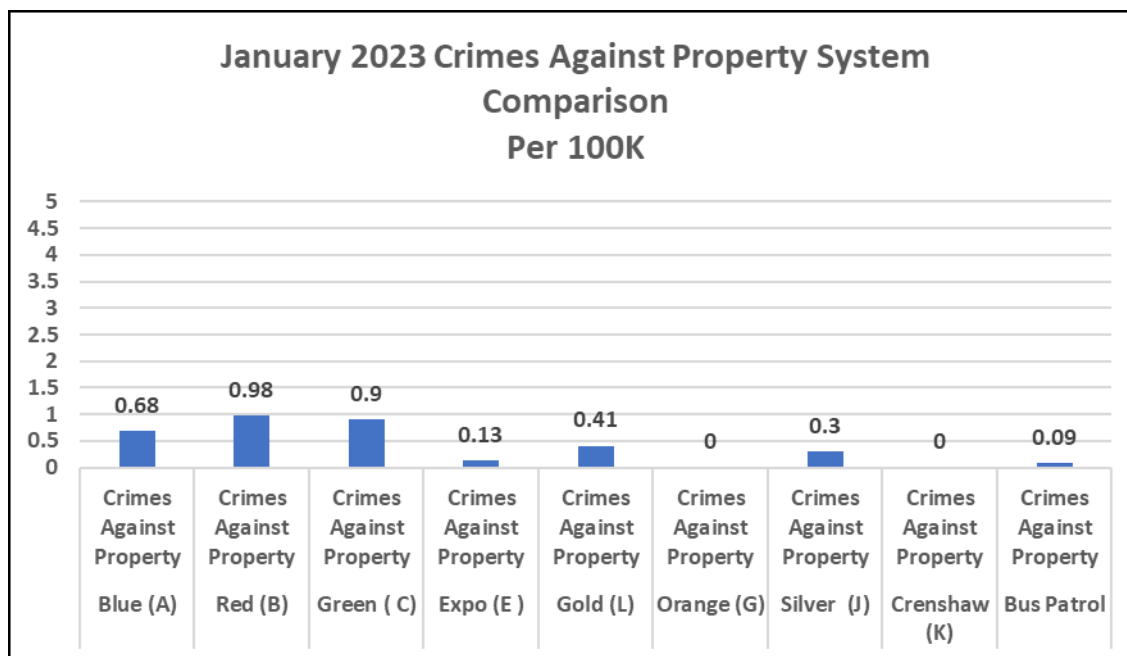
The following outlines the status of existing programs and the research efforts for new initiatives to help reduce crime.

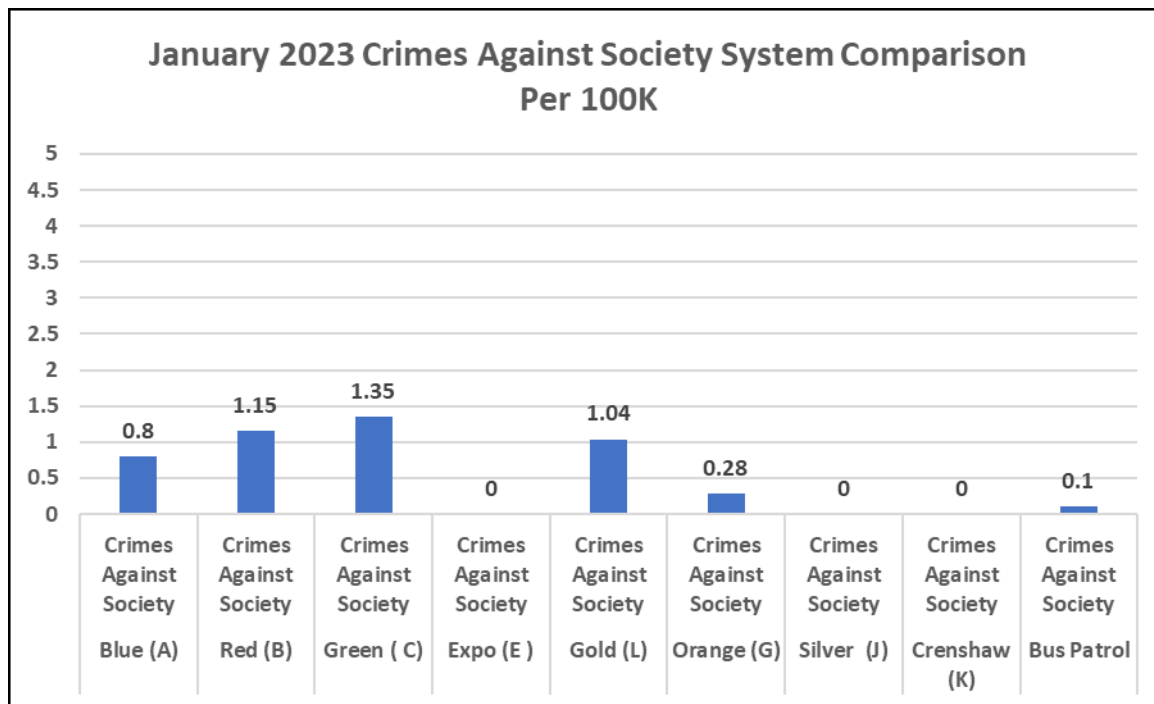
Crime statistics are provided monthly by LAPD, LASD, and LBPD. Attachment A provides the system

-wide Law Enforcement Overview for the month of January 2023. The report covers Crimes Against Persons - violent crimes (i.e., homicide, aggravated assaults) are those in which the victims are always individuals. Crimes Against Property - crimes to obtain money, property, or some other benefit (i.e. theft, vandalism, robbery) and Crimes Against Society- represent society’s prohibition against engaging in certain types of activity (i.e. drug violations).

The overall rate of crime is very low on the bus system. The reported incidents of crime on the bus system have decreased (January over January). However, there is a significant increase in incidents of drug violations, primarily on the Red Line.

An analysis of Part 2 crimes (crimes against society such as narcotics, trespassing, or weapons possession) for January revealed increases in both trespassing and narcotic possession/use incidents on the Blue, Red, Green, and Gold Lines. The rise in trespass incidents is likely linked to the below-average temperatures along with heavier than normal precipitation impacting the LA region throughout the winter. The inclement weather has likely pushed more of the unhoused into the system, reflected in ancillary intrusions and presence on the rail system and platforms.





With 33.8% of all crime occurring on the Red Line, specific strategies and resources are used on this Line to help improve the safety of our riders and front-line employees. Attachment C details the number of crimes that our law enforcement partners reported for January 2023 by each rail line, including by buses system-wide, Union Station, and 7<sup>th</sup> & Metro Station.

An analysis of Part 1 crimes on the Red Line was conducted by comparing crime statistics from January 2022 to those in January 2023. There was a 66% increase in crime incidents in January 2023 compared to the same month the previous year. Crimes Against Persons increased a total of 45.24%, and the biggest increases were robberies (150%), battery (47.69%), and aggravated assaults (28.57%). Crimes Against Property increased 175% over the previous year, which was impacted by the growing number of larceny incidents (280%). Larceny, though prevalent, is typically a nonviolent criminal offense (pickpocketing, bike thefts). Total incidents of crimes against persons and property for January 2022 is 50, while ridership is 2,052,814. Total incidents of crimes against persons and property for January 2023 is 83, while ridership is 2,221,754.

Red Line Reported Crime 2022 vs 2023			
CRIMES AGAINST PERSONS	Jan 2022	Jan 2023	% Change
Homicide	0	1	100%
Rape	0	0	0%
Robbery	4	10	150%
Aggravated Assault	14	18	28.57%
Aggravated Assault on Operator	0	0	0%
Battery	21	31	47.69%
Battery Rail Operator	0	0	0%
Sex Offenses	3	1	-66.67%
<b>Total</b>	<b>42</b>	<b>61</b>	<b>45.24%</b>
CRIMES AGAINST PROPERTY	Jan 2022	Jan 2023	% Change
Burglary	0	0	0%
Larceny	5	19	280%
Bike Theft	0	0	0%
Motor Vehicle Theft	0	0	0%
Arson	0	0	0%
Vandalism	3	3	0%
<b>Total</b>	<b>8</b>	<b>22</b>	<b>175%</b>
CRIMES AGAINST SOCIETY	Jan 2022	Jan 2023	% Change
Weapons	0	1	100%
Narcotics	0	6	600%
Trespassing	1	19	1800%
<b>Total</b>	<b>1</b>	<b>26</b>	<b>2500%</b>

An additional analysis was done on the Crimes Against Society on the Red Line, comparing January 2022 and January 2023. Both narcotic related crimes (possession/use) and trespassing had notable increases. Inclement weather likely impacted trespassing increases during January, while the increase in narcotic-related incidents is consistent with County and nationwide trends.

### **ANTI-DRUG CAMPAIGN**

Narcotic violations impacting the Metro system have evolved into a severe problem, including narcotics sales, chronic drug usage, and overdoses that have reduced the quality of service and endangered our riders and employees.

As shared at last month's Board meeting, drug related fatalities on the system have been on the rise. In response to the February Board meeting, the following chart provides details of the coroner verified drug-related fatalities on the system in 2022. Coroner confirmation of the cause of death for the remaining 11 cases from January 2023 is still pending.

2022 Coroner Verified Drug Deaths	
Drug Identified in System	Number of Confirmed deaths
Fentanyl	9
Methamphetamine	1
<b>2022 Total</b>	<b>10</b>

In February 2023, there were 12 suspected drug related fatalities which are pending confirmation of cause from the coroner.

Narcan is used to reverse opioid overdose quickly. Our law enforcement partners and PATH outreach workers already carry Narcan. Staff began the rollout of Narcan to Metro Transit Security starting on March 10<sup>th</sup>. Staff is working on a plan for Metro Ambassadors to be trained and issued Narcan.

On February 13<sup>th</sup>, staff launched a 30-day Anti-Drug Campaign using a comprehensive, layered approach with the following goals:

- Remove individuals arrested for committing crimes on our system, with a particular focus on drug crimes
- Significantly decrease drug sales, usage, and overdoses on trains, platforms, and in stations
- Remove individuals who are not using the system for the purpose of transportation
- Increase the feeling of safety for our riders and employees
- Increase cleanliness and the overall customer experience on targeted lines
- Decrease crime while taking a holistic approach by offering eligible offenders a drug diversion program and necessary mental health/social services for people experiencing homelessness and suffering from drug addiction

Based on the Transit Watch App reporting, complaints from customers and employees, and crime statistics, problematic stations have been identified as the most challenging for drug usage and crime. The following activities were implemented to address these issues:

- Law Enforcement (LAPD & LASD)
  - Proactively patrolling their respective areas of service, investigating illegal drug activities that have negatively impacted Metro employees and riders.
  - LAPD -focus on the high crime trains and platforms addressing any illegal drug activities.
  - LASD- focus on high crime stations, platforms, and trains within their assigned territory, addressing any illegal drug activities.

- LAPD- provide resources from their HOPE Teams, SPU Units, and clinicians from the Department of Mental Health to address individuals using or selling drugs on the system or experiencing mental illness.
  - Eligible individuals arrested for drug related crimes were offered a drug diversion program in collaboration with the City Attorney's and District Attorney's Offices.
- Metro Transit Security (MTS)
  - Strategically deployed at the high crime stations during the AM and PM hours, focused on proactive patrols of the trains, platforms, and/or mezzanines and turnstiles to address code of conduct, fare compliance, wellness checks, and loitering.
- Contract Security
  - Strategically deployed at all high crime stations during the AM and PM hours, focused on proactive patrols of the ancillary areas to address trespassing.
- Metro Ambassadors
  - Strategically deployed across all problematic stations during the AM and PM hours, focused on customer service on station platforms, mezzanines, and on rail cars.
  - Ambassadors served as extra eyes and ears for any safety, security, or cleaning issues.
- Metro's social services teams continued to conduct outreach and offer services to the unhoused before station openings

The following metrics were used to determine the success of this campaign:

- Before and after photos of the high crime areas
- Reduction in customer complaints and Transit Watch App complaints relating to drug usage and cleanliness in the high crime areas
- Decrease in crime in high crime areas
- Employee surveys after the campaign depicting increased safety on the system

In addition, a media campaign was launched to re-educate and inform the public about Metro's zero-tolerance policy on illegal drugs before and during their rides through a cadence of communications to riders throughout the month of increased enforcement.

By the numbers: During the reporting period of 2/13/2023-3/11/2023, the Anti-Drug Campaign has yielded the following results:

- 1,658 Transit Watch App reports were submitted about drugs, alcohol, and smoking on the system, of which 947 (57.1%) were reported by the public and 711 (42.9%) by Metro Transit Ambassadors.

- 68 citations and 36 warnings were issued by MTS, of which 8 were specific to eating, drinking, or smoking on the system. The following table represents a full breakdown of citations and warnings issued during the review period:

Citations and Warnings 02/13/2023-03/11/2023	
Ticket/Citation	
Reason	Total
6-05-110.A Eating Drinking Smoking	6
6-05-120.A Loitering	4
6-05-230.A Fare Evasion	39
6-05-230. C.1 Boarding Without Proof	18
6-05-230. C.5 Refuse to Show Proof	1
<b>Subtotal</b>	<b>68</b>
Warning	
6-05-110.A Eating Drinking Smoking	2
6-05-120.A Loitering	0
6-05-230.A Fare Evasion	24
6-05-230. C.1 Boarding Without Proof	10
<b>Subtotal</b>	<b>36</b>
<b>Total</b>	<b>104</b>

- Law enforcement conducted 205 drug related arrests.

A review of arrests, CCATS, and Transit Watch App data indicates a nearly equal amount of reporting and arrest activity on both the trains and station platforms. SSLE noted a decline in overall reported drug activity on the Transit Watch App during week four of the Anti-Drug Campaign compared to week 3. Week four yielded 154 reports compared to 1,224 reported during the first week (-87%).

### FARE EVASION

Fare enforcement is a key component of Metro’s Code of Conduct. A subset of unarmed Metro Transit Security Officers conduct fare enforcement daily. When conducting fare enforcement, if passengers have no proof of fare, they will be issued a warning and will be documented via a mobile phone validator. For a passenger that has been warned and does not valid fare a second time, they will be cited. In December 2021, the Metro Office of Civil Rights launched a Mystery Rider Fare Observation Program to independently review the fare compliance process.

See Attachment I for the March 2023 Fare Observations Report from the mystery rider fare compliance program.

### OPERATOR SAFETY

---

In January, there were a total of nine (9) assaults on bus/rail operators, with seven (7) assaults occurring in LAPD's jurisdiction and two (2) assaults occurring in LASD's jurisdiction. All of the assaults in January occurred on the bus system. These assaults represent a 31% decrease from December 2022, when thirteen (13) assaults were reported. A review of the incidents indicated that 45% were caused by no discernible reason or as a result of a missed stop. An analysis of the time of day for the assaults determined that 80% of reported incidents occurred between 6am and 6pm. For January, there were 15,664 bus boardings by LAPD officers and 2,322 bus boardings by LASD deputies.

## **METRO AMBASSADOR PROGRAM**

By the numbers - Reporting Period: 1/6/2023 - 3/2/2023 Metro Ambassadors conducted 58,232 customer interactions and reported the following:

- 1,493 cleanliness issues
- 497 graffiti incidents
- 404 elevator and escalator problems
- 322 safety issues

Metro Ambassadors will continue to support our customers and employees as extra eyes and ears on Metro bus and rail systems.

## **EQUITY PLATFORM**

The Anti-Drug Campaign is a multi-layered effort to address heightened concerns from our riders and employees regarding illegal drug use on the system. Through this campaign, we aim to remind riders that the use of illegal drugs on the system will not be tolerated, and appropriate action will be taken for those violating this policy. Metro's social services teams will be deployed and explore the feasibility of having eligible individuals arrested for drug-related crimes offered a drug diversion program. The goal of this agency approach aims to look at more long-term and sustainable solutions for individuals willing to accept services and avoid a repeated cycle of incarceration.

Metro's balanced approach to decreasing crime on the system will be focused on drug-related and violent crime as a measure of success. Metrics include drug-related arrests; changes to the baseline of drug use on Metro's system, based on Customer Comment Analysis & Tracking System, Transit Watch reports, and Transit Ambassador reports per month; employee surveys targeted at three stations; Vermont/Wilshire, 7th and Metro, and North Hollywood. The target audience for these surveys is frontline staff, including cleaning crews and service. The surveys will be issued by the Blue Shirts and be made available online via a QR code, an in-person iPad survey, and an in-person paper version.

## **NEXT STEPS**

Staff will continue to monitor our law enforcement partners, private security, and Transit Security performance, monitor crime stats, and adjust deployment as necessary.



**ATTACHMENTS**

Attachment A - Systemwide Law Enforcement Overview January 2023

Attachment B - MTA Supporting Data January 2023

Attachment C - Transit Police Summary January 2023

Attachment D - Monthly, Bi-Annual, Annual Comparison January 2023

Attachment E - Violent, Prop, and Part 1 Crimes January 2023

Attachment F - Demographics Data January 2023

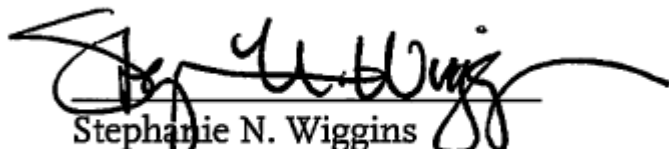
Attachment G - Bus & Rail Operator Assaults January 2023

Attachment H- Sexual Harassment Crimes January 2023

Attachment I - March 2023 Fare Observations Report

Prepared by: Vanessa Smith, Executive Officer, Customer Experience, (213)922-7009  
Robert Gummer, Deputy Executive Officer, Administration, (213)922-4513  
Imelda Hernandez, Senior Manager, Transportation Planning, (213) 922-4848

Reviewed by: Gina Osborn, Chief Safety Officer, Chief Safety Office, (213) 922-3055



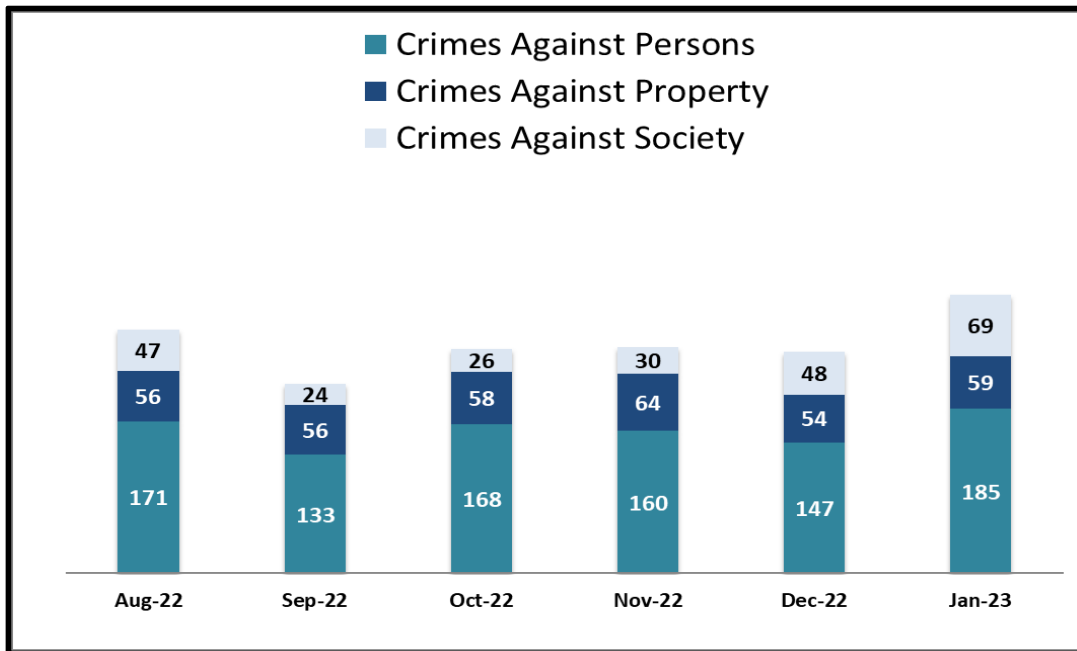
Stephanie N. Wiggins  
Chief Executive Officer

**SYSTEM-WIDE LAW ENFORCEMENT OVERVIEW**

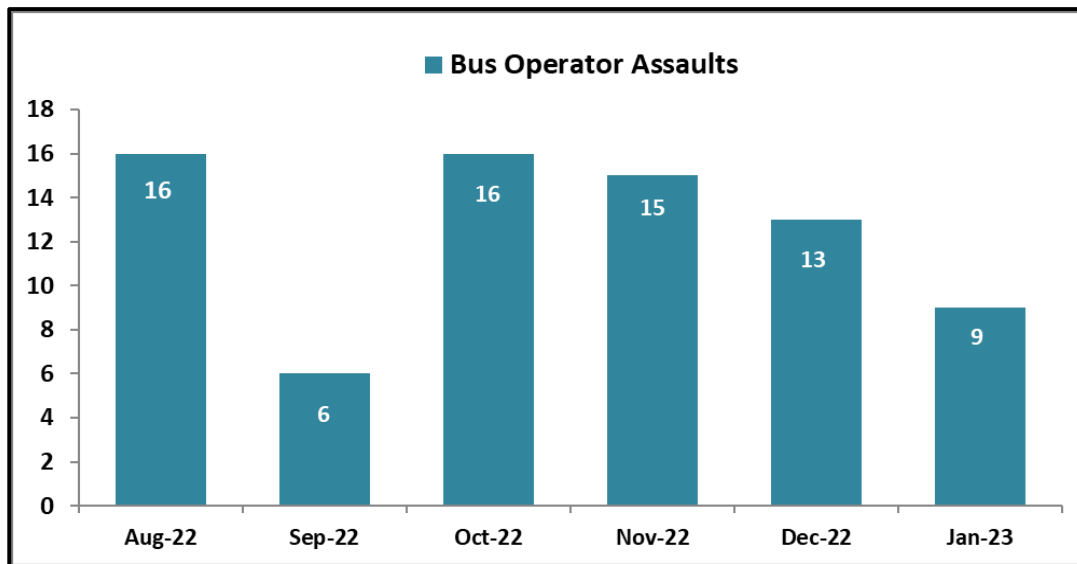
JANUARY 2023

Attachment A

**Total Crimes**



**Bus Operator Assaults**



**SYSTEM-WIDE LAW ENFORCEMENT OVERVIEW**

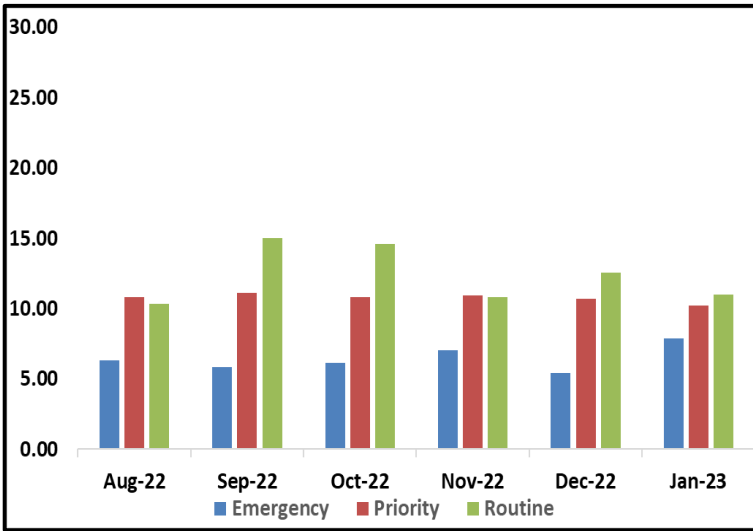
JANUARY 2023

Attachment A

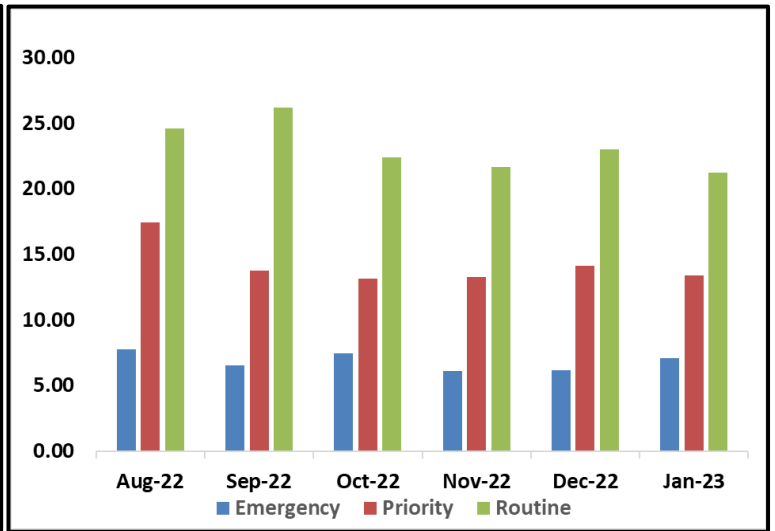
**Average Incident Response Times**

These graphs show how long it takes (in minutes) for LAPD, LASD, and LBPD to respond to Emergency, Priority, and Routine calls

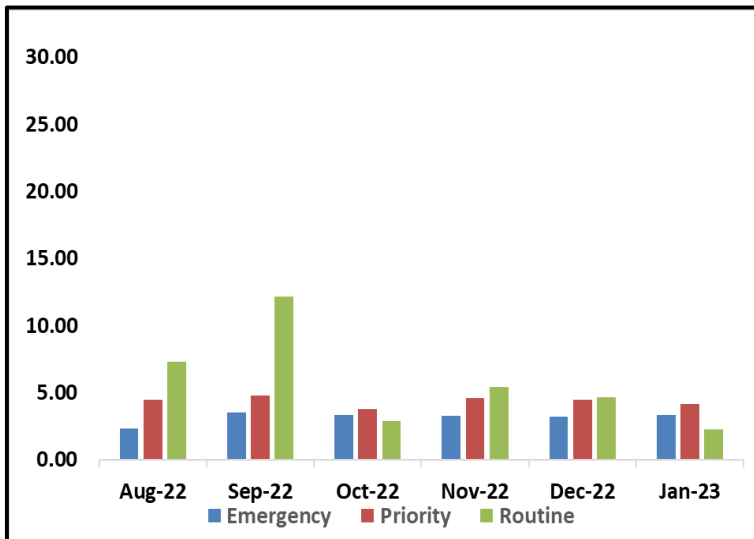
**LAPD**



**LASD**



**LBPD**



**Calls for Service**  
 LAPD: 380  
 LASD: 1,084  
 LBPD: 64

# A LINE (BLUE)

## ATTACHMENT B

### MONTHLY UPDATE ON TRANSIT POLICING PERFORMANCE - JANUARY 2023

REPORTED CRIME				
CRIMES AGAINST PERSONS	LAPD	LASD	LBPD	FYTD
Homicide	0	0	0	1
Rape	0	0	0	1
Robbery	1	3	0	35
Aggravated Assault	2	3	0	34
Aggravated Assault on Operator	0	0	0	0
Battery	3	3	0	41
Battery Rail Operator	0	0	0	1
Sex Offenses	0	0	0	7
<b>SUB-TOTAL</b>	<b>6</b>	<b>9</b>	<b>0</b>	<b>120</b>
CRIMES AGAINST PROPERTY	LAPD	LASD	LBPD	FYTD
Burglary	0	0	0	1
Larceny	1	0	1	32
Bike Theft	0	0	0	1
Motor Vehicle Theft	0	1	1	6
Arson	0	0	0	1
Vandalism	1	1	0	25
<b>SUB-TOTAL</b>	<b>2</b>	<b>2</b>	<b>2</b>	<b>66</b>
CRIMES AGAINST SOCIETY	LAPD	LASD	LBPD	FYTD
Weapons	0	0	0	6
Narcotics	0	6	0	25
Trespassing	0	0	1	1
<b>SUB-TOTAL</b>	<b>0</b>	<b>6</b>	<b>1</b>	<b>32</b>
<b>TOTAL</b>	<b>8</b>	<b>17</b>	<b>3</b>	<b>218</b>

ARRESTS				
AGENCY	LAPD	LASD	LBPD	FYTD
Felony	1	7	1	103
Misdemeanor	0	21	1	413
<b>TOTAL**</b>	<b>1</b>	<b>28</b>	<b>2</b>	<b>516</b>

CITATIONS				
AGENCY	LAPD	LASD	LBPD	FYTD
Other Citations	0	24	6	264
Vehicle Code Citations	0	3	12	88
<b>TOTAL</b>	<b>0</b>	<b>27</b>	<b>18</b>	<b>352</b>

CALLS FOR SERVICE				
AGENCY	LAPD	LASD	LBPD	FYTD
Routine	7	83	4	554
Priority	21	59	43	1,055
Emergency	7	3	17	224
<b>TOTAL</b>	<b>35</b>	<b>145</b>	<b>64</b>	<b>1,833</b>

DISPATCHED VS. PROACTIVE				
AGENCY	LAPD	LASD	LBPD	
Dispatched	16%	3%	2%	
Proactive	84%	97%	98%	
<b>TOTAL</b>	<b>100%</b>	<b>100%</b>	<b>100%</b>	

CRIMES PER STATION				
STATION	CRIMES AGAINST PERSONS	CRIMES AGAINST PROPERTY	CRIMES AGAINST SOCIETY	FYTD
7th St/Metro Ctr	0	1	0	9
Pico	1	1	0	6
Grand/LATTC	3	0	0	10
San Pedro St	0	0	0	5
Washington	2	0	0	9
Vernon	0	0	0	2
Slauson	0	0	2	15
Florence	3	2	0	19
Firestone	2	0	0	11
103rd St/Watts Towers	0	0	0	4
Willowbrook/Rosa Parks	2	0	2	46
Compton	1	0	2	15
Artesia	0	0	0	12
Del Amo	1	0	0	17
Wardlow	0	0	0	2
Willow St	0	0	0	9
PCH	0	0	1	6
Anaheim St	0	0	0	7
5th St	0	0	0	2
1st St	0	2	0	3
Downtown Long Beach	0	0	0	7
Pacific Av	0	0	0	1
Blue Line Rail Yard	0	0	0	1
<b>Total</b>	<b>15</b>	<b>6</b>	<b>7</b>	<b>218</b>

PERCENTAGE OF TIME ON THE RAIL SYSTEM	
Blue Line-LAPD	91%
Blue Line-LASD	84%
Blue Line-LBPD	80%

GRADE CROSSING OPERATIONS				
LOCATION	LAPD	LASD	LBPD	FYTD
Washington St	36	0	0	326
Flower St	0	0	0	48
103rd St	18	0	0	136
Wardlow Rd	0	0	3	17
Pacific Ave.	0	0	0	0
Willowbrook	0	0	0	279
Slauson	1	0	0	25
Firestone	0	0	0	26
Florence	0	0	0	47
Compton	0	0	0	67
Artesia	0	0	0	39
Del Amo	0	0	0	46
Long Beach Blvd	0	0	0	2
<b>TOTAL</b>	<b>55</b>	<b>0</b>	<b>3</b>	<b>1,058</b>

LEGEND	
Los Angeles Police Department	
Los Angeles County Sheriff's Department	
Long Beach Police Department	

\*\*Totals do not include arrests made due to an infraction.

# B LINE (RED)

**ATTACHMENT B**
**MONTHLY UPDATE ON TRANSIT POLICING PERFORMANCE - JANUARY 2023**

REPORTED CRIME		
CRIMES AGAINST PERSONS	LAPD	FYTD
Homicide	1	4
Rape	0	2
Robbery	10	48
Aggravated Assault	18	69
Aggravated Assault on Operator	0	1
Battery	31	122
Battery Rail Operator	0	0
Sex Offenses	1	10
<b>SUB-TOTAL</b>	<b>61</b>	<b>256</b>
CRIMES AGAINST PROPERTY	LAPD	FYTD
Burglary	0	1
Larceny	19	80
Bike Theft	0	2
Motor Vehicle Theft	0	0
Arson	0	0
Vandalism	3	28
<b>SUB-TOTAL</b>	<b>22</b>	<b>111</b>
CRIMES AGAINST SOCIETY	LAPD	FYTD
Weapons	1	1
Narcotics	6	6
Trespassing	19	48
<b>SUB-TOTAL</b>	<b>26</b>	<b>55</b>
<b>TOTAL</b>	<b>109</b>	<b>422</b>

ARRESTS		
AGENCY	LAPD	FYTD
Felony	21	65
Misdemeanor	46	117
<b>TOTAL **</b>	<b>67</b>	<b>182</b>

CITATIONS		
AGENCY	LAPD	FYTD
Other Citations	15	84
Vehicle Code Citations	0	78
<b>TOTAL</b>	<b>15</b>	<b>162</b>

CALLS FOR SERVICE		
AGENCY	LAPD	FYTD
Routine	30	164
Priority	154	1,058
Emergency	13	87
<b>TOTAL</b>	<b>197</b>	<b>1,309</b>

DISPATCHED VS. PROACTIVE	
AGENCY	LAPD
Dispatched	20%
Proactive	80%
<b>TOTAL</b>	<b>100%</b>

CRIMES PER STATION				
STATION	CRIMES AGAINST PERSONS	CRIMES AGAINST PROPERTY	CRIMES AGAINST SOCIETY	FYTD
Union Station	3	1	0	31
Civic Center/Grand Park	1	1	2	11
Pershing Square	3	0	1	26
7th St/Metro Ctr	8	4	0	44
Westlake/MacArthur Park	13	3	2	85
Wilshire/Vermont	8	1	6	39
Wilshire/Normandie	2	0	0	10
Vermont/Beverly	1	1	0	9
Wilshire/Western	3	2	0	17
Vermont/Santa Monica	0	1	0	17
Vermont/Sunset	2	0	1	8
Hollywood/Western	2	2	1	19
Hollywood/Vine	4	2	2	27
Hollywood/Highland	3	0	0	17
Universal City/Studio City	2	1	0	9
North Hollywood	6	3	4	46
Red Line Rail Yard	0	0	0	0
<b>Total</b>	<b>61</b>	<b>22</b>	<b>19</b>	<b>415</b>

PERCENTAGE OF TIME SPENT ON THE RAIL SYSTEM	
Red Line- LAPD	88%

**LEGEND**
**Los Angeles Police Department**

*\*\*Totals do not include arrests made due to an infraction.*

# C LINE (GREEN)

**ATTACHMENT B**
**MONTHLY UPDATE ON TRANSIT POLICING PERFORMANCE - JANUARY 2023**

REPORTED CRIME			
CRIMES AGAINST PERSONS	LAPD	LASD	FYTD
Homicide	0	0	0
Rape	0	0	1
Robbery	0	3	17
Aggravated Assault	0	1	20
Aggravated Assault on Operator	0	0	0
Battery	0	3	23
Battery Rail Operator	0	0	0
Sex Offenses	0	0	0
<b>SUB-TOTAL</b>	<b>0</b>	<b>7</b>	<b>61</b>
CRIMES AGAINST PROPERTY	LAPD	LASD	FYTD
Burglary	0	0	0
Larceny	2	1	18
Bike Theft	0	0	2
Motor Vehicle Theft	0	0	1
Arson	0	0	0
Vandalism	0	1	11
<b>SUB-TOTAL</b>	<b>2</b>	<b>2</b>	<b>32</b>
CRIMES AGAINST SOCIETY	LAPD	LASD	FYTD
Weapons	0	1	8
Narcotics	0	5	16
Trespassing	0	0	1
<b>SUB-TOTAL</b>	<b>0</b>	<b>6</b>	<b>25</b>
<b>TOTAL</b>	<b>2</b>	<b>15</b>	<b>118</b>

ARRESTS			
AGENCY	LAPD	LASD	FYTD
Felony	0	3	32
Misdemeanor	1	14	123
<b>TOTAL**</b>	<b>1</b>	<b>17</b>	<b>155</b>

CITATIONS			
AGENCY	LAPD	LASD	FYTD
Other Citations	3	16	209
Vehicle Code Citations	23	4	312
<b>TOTAL</b>	<b>26</b>	<b>20</b>	<b>521</b>

CALLS FOR SERVICE			
AGENCY	LAPD	LASD	FYTD
Routine	3	130	837
Priority	10	46	505
Emergency	1	5	59
<b>TOTAL</b>	<b>14</b>	<b>181</b>	<b>1,401</b>

DISPATCHED VS. PROACTIVE		
AGENCY	LAPD	LASD
Dispatched	16%	11%
Proactive	84%	89%
<b>TOTAL</b>	<b>100%</b>	<b>100%</b>

PERCENTAGE OF TIME SPENT ON THE RAIL SYSTEM	
Green Line-LAPD	91%
Green Line-LASD	94%

LEGEND	
Los Angeles Police Department	
Los Angeles County Sheriff's Department	

\*\*Totals do not include arrests made due to an infraction.

CRIMES PER STATION				
STATION	CRIMES AGAINST PERSONS	CRIMES AGAINST PROPERTY	CRIMES AGAINST SOCIETY	FYTD
Redondo Beach	2	1	0	8
Douglas	1	0	0	5
El Segundo	1	0	0	7
Mariposa	0	0	0	4
Aviation/LAX	0	1	0	7
Hawthorne/Lennox	0	0	3	11
Crenshaw	0	0	1	13
Vermont/Athens	1	0	0	11
Harbor Fwy	0	0	0	5
Avalon	0	1	0	4
Willowbrook/Rosa Parks	0	0	2	10
Long Beach Bl	0	0	0	15
Lakewood Bl	1	0	0	2
Norwalk	1	1	0	16
<b>Total</b>	<b>7</b>	<b>4</b>	<b>6</b>	<b>118</b>

# E LINE (EXPO)

## ATTACHMENT B

### MONTHLY UPDATE ON TRANSIT POLICING PERFORMANCE - JANUARY 2023

REPORTED CRIME			
CRIMES AGAINST PERSONS	LAPD	LASD	FYTD
Homicide	0	0	1
Rape	0	0	0
Robbery	3	1	30
Aggravated Assault	0	2	15
Aggravated Assault on Operator	0	0	0
Battery	7	1	28
Battery Rail Operator	0	0	0
Sex Offenses	0	0	3
<b>SUB-TOTAL</b>	<b>10</b>	<b>4</b>	<b>77</b>
CRIMES AGAINST PROPERTY	LAPD	LASD	FYTD
Burglary	0	0	0
Larceny	1	0	25
Bike Theft	0	0	3
Motor Vehicle Theft	0	0	0
Arson	0	0	0
Vandalism	0	0	1
<b>SUB-TOTAL</b>	<b>1</b>	<b>0</b>	<b>29</b>
CRIMES AGAINST SOCIETY	LAPD	LASD	FYTD
Weapons	0	0	0
Narcotics	0	0	0
Trespassing	0	0	3
<b>SUB-TOTAL</b>	<b>0</b>	<b>0</b>	<b>3</b>
<b>TOTAL</b>	<b>11</b>	<b>4</b>	<b>109</b>

ARRESTS			
AGENCY	LAPD	LASD	FYTD
Felony	0	0	12
Misdemeanor	0	3	30
<b>TOTAL**</b>	<b>0</b>	<b>3</b>	<b>42</b>

CITATIONS			
AGENCY	LAPD	LASD	FYTD
Other Citations	0	4	43
Vehicle Code Citations	1	0	12
<b>TOTAL</b>	<b>1</b>	<b>4</b>	<b>55</b>

CALLS FOR SERVICE			
AGENCY	LAPD	LASD	FYTD
Routine	7	61	483
Priority	26	26	561
Emergency	6	4	57
<b>TOTAL</b>	<b>39</b>	<b>91</b>	<b>1,101</b>

DISPATCHED VS. PROACTIVE		
AGENCY	LAPD	LASD
Dispatched	16%	8%
Proactive	84%	92%
<b>TOTAL</b>	<b>100%</b>	<b>100%</b>

PERCENTAGE OF TIME SPENT ON THE RAIL SYSTEM	
Expo Line-LAPD	91%
Expo Line-LASD	95%

GRADE CROSSING OPERATIONS			
LOCATION	LAPD	LASD	FYTD
Exposition Blvd	124	0	949
Santa Monica	0	12	70
Culver City	0	3	21
<b>TOTAL</b>	<b>124</b>	<b>15</b>	<b>1,040</b>

LEGEND	
Los Angeles Police Department	
Los Angeles County Sheriff's Department	

\*\*Totals do not include arrests made due to an infraction.

CRIMES PER STATION				
STATION	CRIMES AGAINST PERSONS	CRIMES AGAINST PROPERTY	CRIMES AGAINST SOCIETY	FYTD
7th St/Metro Ctr	2	0	0	5
Pico	1	0	0	1
LATTC/Ortho Institute	0	0	0	2
Jefferson/USC	0	0	0	5
Expo Park/USC	0	0	0	8
Expo/Vermont	3	1	0	14
Expo/Western	1	0	0	17
Expo/Crenshaw	1	0	0	11
Farmdale	1	0	0	7
Expo/La Brea	1	0	0	2
La Cienega/Jefferson	0	0	0	5
Culver City	0	0	0	6
Palms	0	0	0	3
Westwood/Rancho Park	0	0	0	1
Expo/Sepulveda	0	0	0	3
Expo/Bundy	0	0	0	3
26th St/Bergamot	1	0	0	2
17th St/SMC	0	0	0	2
Downtown Santa Monica	3	0	0	12
Expo Line Rail Yard	0	0	0	0
<b>Total</b>	<b>14</b>	<b>1</b>	<b>0</b>	<b>109</b>

# G LINE (ORANGE)

**ATTACHMENT B**
**MONTHLY UPDATE ON TRANSIT POLICING PERFORMANCE - JANUARY 2023**

REPORTED CRIME		
CRIMES AGAINST PERSONS	LAPD	FYTD
Homicide	0	0
Rape	0	0
Robbery	1	5
Aggravated Assault	1	5
Aggravated Assault on Operator	0	0
Battery	0	9
Battery Bus Operator	1	2
Sex Offenses	0	1
<b>SUB-TOTAL</b>	<b>3</b>	<b>22</b>
CRIMES AGAINST PROPERTY	LAPD	FYTD
Burglary	0	0
Larceny	0	1
Bike Theft	0	1
Motor Vehicle Theft	0	0
Arson	0	0
Vandalism	0	1
<b>SUB-TOTAL</b>	<b>0</b>	<b>3</b>
CRIMES AGAINST SOCIETY	LAPD	FYTD
Weapons	1	1
Narcotics	0	0
Trespassing	0	2
<b>SUB-TOTAL</b>	<b>1</b>	<b>3</b>
<b>TOTAL</b>	<b>4</b>	<b>28</b>

ARRESTS		
AGENCY	LAPD	FYTD
Felony	2	7
Misdemeanor	1	9
<b>TOTAL**</b>	<b>3</b>	<b>16</b>

CITATIONS		
AGENCY	LAPD	FYTD
Other Citations	5	160
Vehicle Code Citations	36	798
<b>TOTAL</b>	<b>41</b>	<b>958</b>

CALLS FOR SERVICE		
AGENCY	LAPD	FYTD
Routine	0	3
Priority	6	58
Emergency	1	4
<b>TOTAL</b>	<b>7</b>	<b>65</b>

DISPATCHED VS. PROACTIVE	
AGENCY	LAPD
Dispatched	15%
Proactive	85%
<b>TOTAL</b>	<b>100%</b>

PERCENTAGE OF TIME SPENT ON THE BUS SYSTEM	
Orange Line- LAPD	91%

LEGEND
<b>Los Angeles Police Department</b>

*\*\*Totals do not include arrests made due to an infraction.*

CRIMES PER STATION				
STATION	CRIMES AGAINST PERSONS	CRIMES AGAINST PROPERTY	CRIMES AGAINST SOCIETY	FYTD
North Hollywood	0	0	0	3
Laurel Canyon	0	0	0	0
Valley College	0	0	0	0
Woodman	0	0	0	0
Van Nuys	1	0	0	3
Sepulveda	0	0	0	1
Woodley	0	0	0	2
Balboa	1	0	0	4
Reseda	1	0	0	2
Tampa	0	0	0	4
Pierce College	0	0	0	1
De Soto	0	0	0	1
Canoga	0	0	0	2
Warner Center	0	0	0	0
Sherman Way	0	0	0	2
Roscoe	0	0	0	1
Nordhoff	0	0	0	0
Chatsworth	0	0	0	1
<b>Total</b>	<b>3</b>	<b>0</b>	<b>0</b>	<b>27</b>



# J LINE (SILVER)

## ATTACHMENT B

### MONTHLY UPDATE ON TRANSIT POLICING PERFORMANCE - JANUARY 2023

REPORTED CRIME			
CRIMES AGAINST PERSONS	LAPD	LASD	FYTD
Homicide	0	0	0
Rape	0	0	0
Robbery	0	0	1
Aggravated Assault	0	0	2
Aggravated Assault on Operator	0	0	1
Battery	0	0	2
Battery Bus Operator	0	0	0
Sex Offenses	0	0	1
<b>SUB-TOTAL</b>	<b>0</b>	<b>0</b>	<b>7</b>
CRIMES AGAINST PROPERTY	LAPD	LASD	FYTD
Burglary	0	0	0
Larceny	0	0	0
Bike Theft	0	0	0
Motor Vehicle Theft	0	0	0
Arson	0	0	0
Vandalism	1	0	2
<b>SUB-TOTAL</b>	<b>1</b>	<b>0</b>	<b>2</b>
CRIMES AGAINST SOCIETY	LAPD	LASD	FYTD
Weapons	0	0	0
Narcotics	0	0	1
Trespassing	0	0	0
<b>SUB-TOTAL</b>	<b>0</b>	<b>0</b>	<b>1</b>
<b>TOTAL</b>	<b>1</b>	<b>0</b>	<b>10</b>

ARRESTS			
AGENCY	LAPD	LASD	FYTD
Felony	0	0	1
Misdemeanor	0	2	7
<b>TOTAL**</b>	<b>0</b>	<b>2</b>	<b>8</b>

CITATIONS			
AGENCY	LAPD	LASD	FYTD
Other Citations	6	0	155
Vehicle Code Citations	70	0	738
<b>TOTAL</b>	<b>76</b>	<b>0</b>	<b>893</b>

CALLS FOR SERVICE			
AGENCY	LAPD	LASD	FYTD
Routine	0	14	34
Priority	2	5	35
Emergency	0	0	2
<b>TOTAL</b>	<b>2</b>	<b>19</b>	<b>71</b>

DISPATCHED VS. PROACTIVE		
AGENCY	LAPD	LASD
Dispatched	19%	10%
Proactive	81%	90%
<b>TOTAL</b>	<b>100%</b>	<b>100%</b>

PERCENTAGE OF TIME SPENT ON THE BUS SYSTEM	
Silver Line- LAPD	91%
Silver Line- LASD	85%

LEGEND	
Los Angeles Police Department	
Los Angeles County Sheriff's Department	

\*\*Totals do not include arrests made due to an infraction.

CRIMES PER STATION				
STATION	CRIMES AGAINST PERSONS	CRIMES AGAINST PROPERTY	CRIMES AGAINST SOCIETY	FYTD
El Monte	0	0	0	2
Cal State LA	0	0	0	0
LAC/USC Medical Ctr	0	0	0	0
Alameda	0	0	0	0
Downtown	0	0	0	0
37th St/USC	0	0	0	0
Slauson	0	0	0	3
Manchester	0	0	0	1
Harbor Fwy	0	1	0	2
Rosecrans	0	0	0	0
Harbor Gateway Transit Ctr	0	0	0	2
Carson	0	0	0	0
PCH	0	0	0	0
San Pedro/Beacon	0	0	0	0
<b>Total</b>	<b>0</b>	<b>1</b>	<b>0</b>	<b>10</b>

# K LINE

**ATTACHMENT B**
**MONTHLY UPDATE ON TRANSIT POLICING PERFORMANCE - JANUARY 2023**

REPORTED CRIME			
CRIMES AGAINST PERSONS	LAPD	LASD	FYTD
Homicide	0	0	0
Rape	0	0	0
Robbery	0	0	0
Aggravated Assault	2	0	2
Aggravated Assault on Operator	0	0	0
Battery	0	0	0
Battery Bus Operator	0	0	0
Sex Offenses	0	0	0
<b>SUB-TOTAL</b>	<b>2</b>	<b>0</b>	<b>2</b>
CRIMES AGAINST PROPERTY	LAPD	LASD	FYTD
Burglary	0	0	0
Larceny	0	0	1
Bike Theft	0	0	0
Motor Vehicle Theft	0	0	0
Arson	0	0	0
Vandalism	0	0	0
<b>SUB-TOTAL</b>	<b>0</b>	<b>0</b>	<b>1</b>
CRIMES AGAINST SOCIETY	LAPD	LASD	FYTD
Weapons	0	0	0
Narcotics	0	0	0
Trespassing	0	0	0
<b>SUB-TOTAL</b>	<b>0</b>	<b>0</b>	<b>0</b>
<b>TOTAL</b>	<b>2</b>	<b>0</b>	<b>3</b>

ARRESTS			
AGENCY	LAPD	LASD	FYTD
Felony	0	0	0
Misdemeanor	0	1	4
<b>TOTAL**</b>	<b>0</b>	<b>1</b>	<b>4</b>

CITATIONS			
AGENCY	LAPD	LASD	FYTD
Other Citations	0	0	5
Vehicle Code Citations	0	0	0
<b>TOTAL</b>	<b>0</b>	<b>0</b>	<b>5</b>

CALLS FOR SERVICE			
AGENCY	LAPD	LASD	FYTD
Routine	0	33	118
Priority	2	7	45
Emergency	1	0	1
<b>TOTAL</b>	<b>3</b>	<b>40</b>	<b>164</b>

DISPATCHED VS. PROACTIVE		
AGENCY	LAPD	LASD
Dispatched	15%	14%
Proactive	85%	86%
<b>TOTAL</b>	<b>100%</b>	<b>100%</b>

CRIMES PER STATION				
STATION	CRIMES AGAINST PERSONS	CRIMES AGAINST PROPERTY	CRIMES AGAINST SOCIETY	FYTD
Expo / Crenshaw	0	0	0	0
Martin Luther King Jr Station	2	0	0	2
Leimert Park Station	0	0	0	0
Hyde Park Station	0	0	0	0
Fairview Heights Station	0	0	0	0
Downtown Inglewood Station	0	0	0	0
Westchester / Veterans Station	0	0	0	1
<b>Total</b>	<b>2</b>	<b>0</b>	<b>0</b>	<b>3</b>

PERCENTAGE OF TIME SPENT ON THE RAIL SYSTEM	
K Line - LAPD	88%
K Line - LASD	96%

LEGEND	
Los Angeles Police Department	
Los Angeles County Sheriff's Department	

\*\*Totals do not include arrests made due to an infraction.

# L LINE (GOLD)

## ATTACHMENT B

### MONTHLY UPDATE ON TRANSIT POLICING PERFORMANCE - JANUARY 2023

REPORTED CRIME			
CRIMES AGAINST PERSONS	LAPD	LASD	FYTD
Homicide	0	0	0
Rape	0	0	0
Robbery	0	1	14
Aggravated Assault	0	0	14
Aggravated Assault on Operator	0	0	1
Battery	1	0	18
Battery Rail Operator	0	0	0
Sex Offenses	0	0	6
<b>SUB-TOTAL</b>	<b>1</b>	<b>1</b>	<b>53</b>
CRIMES AGAINST PROPERTY	LAPD	LASD	FYTD
Burglary	0	0	0
Larceny	1	0	14
Bike Theft	0	0	3
Motor Vehicle Theft	0	0	1
Arson	0	0	1
Vandalism	1	0	10
<b>SUB-TOTAL</b>	<b>2</b>	<b>0</b>	<b>29</b>
CRIMES AGAINST SOCIETY	LAPD	LASD	FYTD
Weapons	0	0	7
Narcotics	0	0	5
Trespassing	2	3	19
<b>SUB-TOTAL</b>	<b>2</b>	<b>3</b>	<b>31</b>
<b>TOTAL</b>	<b>5</b>	<b>4</b>	<b>113</b>

ARRESTS			
AGENCY	LAPD	LASD	FYTD
Felony	0	2	42
Misdemeanor	1	32	307
<b>TOTAL**</b>	<b>1</b>	<b>34</b>	<b>349</b>

CITATIONS			
AGENCY	LAPD	LASD	FYTD
Other Citations	0	30	367
Vehicle Code Citations	0	2	18
<b>TOTAL</b>	<b>0</b>	<b>32</b>	<b>385</b>

CALLS FOR SERVICE			
AGENCY	LAPD	LASD	FYTD
Routine	6	160	1,117
Priority	16	69	726
Emergency	2	9	94
<b>TOTAL</b>	<b>24</b>	<b>238</b>	<b>1,937</b>

DISPATCHED VS. PROACTIVE		
AGENCY	LAPD	LASD
Dispatched	19%	9%
Proactive	81%	91%
<b>TOTAL</b>	<b>100%</b>	<b>100%</b>

CRIMES PER STATION				
STATION	CRIMES AGAINST PERSONS	CRIMES AGAINST PROPERTY	CRIMES AGAINST SOCIETY	FYTD
APU/Citrus College	0	0	1	11
Azusa Downtown	1	0	1	17
Irwindale	0	0	0	6
Duarte/City of Hope	0	0	0	5
Monrovia	0	0	0	4
Arcadia	0	0	0	8
Sierra Madre Villa	0	0	0	6
Allen	0	0	0	2
Lake	0	0	0	12
Memorial Park	0	0	0	3
Del Mar	0	0	0	1
Fillmore	0	0	1	7
South Pasadena	0	0	0	2
Highland Park	0	1	0	3
Southwest Museum	0	0	0	2
Heritage Square	0	0	0	0
Lincoln/Cypress	0	0	0	2
Chinatown	0	0	0	3
Union Station	1	0	1	6
Little Tokyo/Arts Dist	0	0	0	0
Pico/Aliso	0	1	0	2
Mariachi Plaza	0	0	0	2
Soto	0	0	1	2
Indiana (both LAPD & LASD)	0	0	0	5
Maravilla	0	0	0	0
East LA Civic Ctr	0	0	0	0
Atlantic	0	0	0	2
<b>Total</b>	<b>2</b>	<b>2</b>	<b>5</b>	<b>113</b>

PERCENTAGE OF TIME SPENT ON THE RAIL SYSTEM	
Gold Line-LAPD	91%
Gold Line-LASD	89%

GRADE CROSSING OPERATIONS			
LOCATION	LAPD	LASD	FYTD
Marmion Way	0	0	1
Arcadia Station	0	4	25
Irwindale	0	13	89
Monrovia	0	2	17
City of Pasadena	0	6	87
Magnolia Ave	0	0	0
Duarte Station	0	1	22
City Of Azusa	0	2	49
South Pasadena	0	0	40
City Of East LA	0	2	61
Figueroa St	0	0	8
<b>TOTAL GOAL= 10</b>	<b>0</b>	<b>30</b>	<b>399</b>

LEGEND	
Los Angeles Police Department	
Los Angeles County Sheriff's Department	

\*\*Totals do not include arrests made due to an infraction.

# BUS PATROL

**ATTACHMENT B**
**MONTHLY UPDATE ON TRANSIT POLICING PERFORMANCE - JANUARY 2023**

REPORTED CRIME			
CRIMES AGAINST PERSONS	LAPD	LASD	FYTD
Homicide	0	0	0
Rape	0	0	0
Robbery	1	2	42
Aggravated Assault	5	4	72
Aggravated Assault on Operator	1	0	18
Battery	31	2	177
Battery Bus Operator	5	2	68
Sex Offenses	1	1	17
<b>SUB-TOTAL</b>	<b>44</b>	<b>11</b>	<b>394</b>
CRIMES AGAINST PROPERTY	LAPD	LASD	FYTD
Burglary	0	0	1
Larceny	6	3	69
Bike Theft	0	0	2
Motor Vehicle Theft	0	0	2
Arson	0	0	1
Vandalism	2	5	42
<b>SUB-TOTAL</b>	<b>8</b>	<b>8</b>	<b>117</b>
CRIMES AGAINST SOCIETY	LAPD	LASD	FYTD
Weapons	0	1	19
Narcotics	2	14	69
Trespassing	0	0	7
<b>SUB-TOTAL</b>	<b>2</b>	<b>15</b>	<b>95</b>
<b>TOTAL</b>	<b>54</b>	<b>34</b>	<b>606</b>

LASD's Crimes per Sector		
Sector		FYTD
Westside	3	20
San Fernando	2	6
San Gabriel Valley	2	29
Gateway Cities	14	100
South Bay	13	100
<b>Total</b>	<b>34</b>	<b>255</b>

LAPD's Crimes per Sector		
Sector		FYTD
<b>Valley Bureau</b>		
Van Nuys	2	14
West Valley	0	10
North Hollywood	1	9
Foothill	1	3
Devonshire	1	4
Mission	1	5
Topanga	0	4
<b>Central Bureau</b>		
Central	16	61
Rampart	3	22
Hollenbeck	0	4
Northeast	0	6
Newton	3	28
<b>West Bureau</b>		
Hollywood	1	21
Wilshire	0	13
West LA	3	12
Pacific	0	7
Olympic	7	32
<b>Southwest Bureau</b>		
Southwest	6	40
Harbor	1	5
77th Street	5	38
Southeast	1	12
<b>Total</b>	<b>52</b>	<b>350</b>

ARRESTS			
AGENCY	LAPD	LASD	FYTD
Felony	8	10	137
Misdemeanor	8	89	651
<b>TOTAL**</b>	<b>16</b>	<b>99</b>	<b>788</b>

CITATIONS			
AGENCY	LAPD	LASD	FYTD
Other Citations	2	106	788
Vehicle Code Citations	6	50	312
<b>TOTAL</b>	<b>8</b>	<b>156</b>	<b>1,100</b>

CALLS FOR SERVICE			
AGENCY	LAPD	LASD	FYTD
Routine	4	168	960
Priority	2	109	884
Emergency	0	13	86
<b>TOTAL</b>	<b>6</b>	<b>290</b>	<b>1,930</b>

DISPATCHED VS. PROACTIVE		
AGENCY	LAPD	LASD
Dispatched	19%	3%
Proactive	81%	97%
<b>TOTAL</b>	<b>100%</b>	<b>100%</b>

PERCENTAGE OF TIME SPENT ON THE BUS SYSTEM	
LAPD BUS	89%
LASD BUS	92%

LEGEND	
Los Angeles Police Department	
Los Angeles County Sheriff's Department	

\*\*Totals do not include arrests made due to an infraction.

# UNION STATION

## ATTACHMENT B

### MONTHLY UPDATE ON TRANSIT POLICING PERFORMANCE - JANUARY 2023

REPORTED CRIME		
CRIMES AGAINST PERSONS	LAPD	FYTD
Homicide	0	0
Rape	0	0
Robbery	0	4
Aggravated Assault	2	21
Aggravated Assault on Operator	0	0
Battery	15	79
Battery Rail Operator	0	0
Sex Offenses	0	7
<b>SUB-TOTAL</b>	<b>17</b>	<b>111</b>
CRIMES AGAINST PROPERTY	LAPD	FYTD
Burglary	2	4
Larceny	5	23
Bike Theft	0	3
Motor Vehicle Theft	0	0
Arson	0	0
Vandalism	0	11
<b>SUB-TOTAL</b>	<b>7</b>	<b>41</b>
CRIMES AGAINST SOCIETY	LAPD	FYTD
Weapons	1	1
Narcotics	0	0
Trespassing	4	21
<b>SUB-TOTAL</b>	<b>5</b>	<b>22</b>
<b>TOTAL</b>	<b>29</b>	<b>174</b>

ARRESTS		
AGENCY	LAPD	FYTD
Felony	3	26
Misdemeanor	7	77
<b>TOTAL**</b>	<b>10</b>	<b>103</b>

CITATIONS		
AGENCY	LAPD	FYTD
Other Citations	0	37
Vehicle Code Citations	0	7
<b>TOTAL</b>	<b>0</b>	<b>44</b>

CALLS FOR SERVICE		
AGENCY	LAPD	FYTD
Routine	7	66
Priority	37	329
Emergency	3	28
<b>TOTAL</b>	<b>47</b>	<b>423</b>

DISPATCHED VS. PROACTIVE	
AGENCY	LAPD
Dispatched	21%
Proactive	79%
<b>TOTAL</b>	<b>100%</b>

PERCENTAGE OF TIME SPENT AT UNION STATION	
LOCATION	LAPD
Union Station	88%

LEGEND
Los Angeles Police Department

\*\*Totals do not include arrests made due to an infraction.

# 7TH & METRO STATION

**ATTACHMENT B**
**MONTHLY UPDATE ON TRANSIT POLICING PERFORMANCE - JANUARY 2023**

REPORTED CRIME		
CRIMES AGAINST PERSONS	LAPD	FYTD
Homicide	0	0
Rape	0	0
Robbery	2	6
Aggravated Assault	3	4
Aggravated Assault on Operator	0	0
Battery	4	14
Battery Rail Operator	0	0
Sex Offenses	0	0
<b>SUB-TOTAL</b>	<b>9</b>	<b>24</b>
CRIMES AGAINST PROPERTY	LAPD	FYTD
Burglary	0	0
Larceny	0	1
Bike Theft	0	0
Motor Vehicle Theft	0	0
Arson	0	0
Vandalism	0	0
<b>SUB-TOTAL</b>	<b>0</b>	<b>1</b>
CRIMES AGAINST SOCIETY	LAPD	FYTD
Weapons	0	0
Narcotics	0	0
Trespassing	2	4
<b>SUB-TOTAL</b>	<b>2</b>	<b>4</b>
<b>TOTAL</b>	<b>11</b>	<b>29</b>

ARRESTS		
AGENCY	LAPD	FYTD
Felony	0	2
Misdemeanor	0	8
<b>TOTAL**</b>	<b>0</b>	<b>10</b>

CITATIONS		
AGENCY	LAPD	FYTD
Other Citations	1	8
Vehicle Code Citations	5	5
<b>TOTAL</b>	<b>6</b>	<b>13</b>

CALLS FOR SERVICE		
AGENCY	LAPD	FYTD
Routine	0	3
Priority	5	19
Emergency	1	2
<b>TOTAL</b>	<b>6</b>	<b>24</b>

DISPATCHED VS. PROACTIVE	
AGENCY	LAPD
Dispatched	20%
Proactive	80%
<b>TOTAL</b>	<b>100%</b>

PERCENTAGE OF TIME SPENT AT 7TH & METRO STATION	
LOCATION	LAPD
7th & Metro Station	88%

LEGEND
<b>Los Angeles Police Department</b>

*\*\*Totals do not include arrests made due to an infraction.*

# Transit Police

## Monthly Crime Report


**Attachment C**

	2023	2022	%
	January	January	Change
<b>CRIMES AGAINST PERSONS</b>			
Homicide	1	1	0.0%
Rape	0	0	0.0%
Robbery	28	24	16.7%
Aggravated Assault	43	33	30.3%
Aggravated Assault on Operator	1	0	N/A
Battery	101	89	13.5%
Battery on Operator	8	13	-38.5%
Sex Offenses	3	5	-40.0%
<b>SUB-TOTAL</b>	<b>185</b>	<b>165</b>	<b>12.1%</b>
<b>CRIMES AGAINST PROPERTY</b>			
Burglary	2	3	-33.3%
Larceny	40	35	14.3%
Bike Theft	0	2	-100.0%
Motor Vehicle Theft	2	2	0.0%
Arson	0	0	0.0%
Vandalism	15	29	-48.3%
<b>SUB-TOTAL</b>	<b>59</b>	<b>71</b>	<b>-16.9%</b>
<b>CRIMES AGAINST SOCIETY</b>			
Weapons	5	3	66.7%
Narcotics	33	8	312.5%
Trespassing	31	5	520.0%
<b>SUB-TOTAL</b>	<b>69</b>	<b>16</b>	<b>331.3%</b>
<b>TOTAL</b>	<b>313</b>	<b>252</b>	<b>24.2%</b>
<b>ENFORCEMENT EFFORTS</b>			
Arrests	285	133	114.3%
Citations	430	474	-9.3%
Calls for Service	1,448	1,478	-2.0%



**MONTHLY, BI-ANNUAL, ANNUAL COMPARISON**

**JANUARY 2023**

Attachment D

**Crimes**

**Monthly**

<b>System-Wide</b>	<b>Jan-22</b>	<b>Jan-23</b>	<b>% Change</b>
Crimes Against Persons	165	185	12.12%
Crimes Against Property	71	59	-16.90%
Crimes Against Society	16	69	331.25%
<b>Total</b>	<b>252</b>	<b>313</b>	<b>24.21%</b>

**Six Months**

<b>System-Wide</b>	<b>Aug-21-Jan-22</b>	<b>Aug-22-Jan-23</b>	<b>% Change</b>
Crimes Against Persons	938	964	2.77%
Crimes Against Property	409	347	-15.16%
Crimes Against Society	111	244	119.82%
<b>Total</b>	<b>1,458</b>	<b>1,555</b>	<b>6.65%</b>

**Annual**

<b>System-Wide</b>	<b>Feb-21-Jan-22</b>	<b>Feb-22-Jan-23</b>	<b>% Change</b>
Crimes Against Persons	1,704	1,956	14.79%
Crimes Against Property	780	864	10.77%
Crimes Against Society	282	390	38.30%
<b>Total</b>	<b>2,766</b>	<b>3,210</b>	<b>16.05%</b>

**Average Emergency Response Times**

**Monthly**

<b>Jan-22</b>	<b>Jan-23</b>	<b>% Change</b>
4:33	6:04	33.33%

**Six Months**

<b>Aug-21-Jan-22</b>	<b>Aug-22-Jan-23</b>	<b>% Change</b>
4:46	5:28	14.69%

**Annual**

<b>Feb-21-Jan-22</b>	<b>Feb-22-Jan-23</b>	<b>% Change</b>
4:32	5:30	21.32%

**Bus Operator Assaults**

**Monthly**

<b>Jan-22</b>	<b>Jan-23</b>	<b>% Change</b>
13	9	-30.77%

**Six Months**

<b>Aug-21-Jan-22</b>	<b>Aug-22-Jan-23</b>	<b>% Change</b>
84	75	-10.71%

**Annual**

<b>Feb-21-Jan-22</b>	<b>Feb-22-Jan-23</b>	<b>% Change</b>
125	158	26.40%

**Ridership**

**Monthly**

<b>Jan-22</b>	<b>Jan-23</b>	<b>% Change</b>
18,766,760	21,234,326	13.15%

**Six Months**

<b>Aug-21-Jan-22</b>	<b>Aug-22-Jan-23</b>	<b>% Change</b>
128,937,348	132,546,969	2.80%

**Annual**

<b>Feb-21-Jan-22</b>	<b>Feb-22-Jan-23</b>	<b>% Change</b>
233,171,558	257,720,936	10.53%





SYSTEM SECURITY & LAW ENFORCEMENT

Attachment E

Violent and Property Crimes  
January 2023

<b>VIOLENT CRIMES</b>	<b>1/01/2023 TO 1/31/2023</b>	<b>12/01/2022 TO 12/31/2022</b>	<b>% Change</b>	<b>12/01/2022 TO 12/31/2022</b>	<b>11/01/2022 TO 11/30/2022</b>	<b>% Change</b>	<b>1/01/2023 TO 1/31/2023</b>	<b>1/01/2019 TO 1/31/2019</b>	<b>% Change</b>	<b>1/01/2023 TO 1/31/2023</b>	<b>1/01/2018 TO 1/31/2018</b>	<b>% Change</b>
Homicide	1	0	N/A	0	1	-100.0%	1	0	N/A	1	0	N/A
Rape	0	1	-100.0%	1	1	0.0%	0	1	-100.0%	0	0	0.0%
Robbery	28	31	-9.7%	31	31	0.0%	28	29	-3.4%	28	27	3.7%
Aggravated Assault	43	29	48.3%	29	35	-17.1%	43	25	72.0%	43	23	87.0%
Aggravated Assault on Operator	1	3	-66.7%	3	9	-66.7%	1	0	N/A	1	0	N/A
<b>TOTAL VIOLENT</b>	<b>73</b>	<b>64</b>	<b>14.1%</b>	<b>64</b>	<b>77</b>	<b>-16.9%</b>	<b>73</b>	<b>55</b>	<b>32.7%</b>	<b>73</b>	<b>50</b>	<b>46.0%</b>
<b>PROPERTY CRIMES</b>	<b>1/01/2023 TO 1/31/2023</b>	<b>12/01/2022 TO 12/31/2022</b>	<b>% Change</b>	<b>12/01/2022 TO 12/31/2022</b>	<b>11/01/2022 TO 11/30/2022</b>	<b>% Change</b>	<b>1/01/2023 TO 1/31/2023</b>	<b>1/01/2019 TO 1/31/2019</b>	<b>% Change</b>	<b>1/01/2023 TO 1/31/2023</b>	<b>1/01/2018 TO 1/31/2018</b>	<b>% Change</b>
Burglary	2	1	100.0%	1	0	N/A	2	1	100.0%	2	1	100.0%
Larceny	40	36	11.1%	36	43	-16.3%	40	77	-48.1%	40	53	-24.5%
Bike Theft	0	1	-100.0%	1	2	-50.0%	0	5	-100.0%	0	7	-100.0%
Motor Vehicle Theft	2	1	100.0%	1	2	-50.0%	2	3	-33.3%	2	3	-33.3%
<b>TOTAL PROPERTY</b>	<b>44</b>	<b>39</b>	<b>12.8%</b>	<b>39</b>	<b>47</b>	<b>-17.0%</b>	<b>44</b>	<b>86</b>	<b>-48.8%</b>	<b>44</b>	<b>64</b>	<b>-31.3%</b>
<b>TOTAL PART 1</b>	<b>117</b>	<b>103</b>	<b>13.6%</b>	<b>103</b>	<b>124</b>	<b>-16.9%</b>	<b>117</b>	<b>141</b>	<b>-17.0%</b>	<b>117</b>	<b>114</b>	<b>2.6%</b>

This table summarizes Violent Crimes and Property Crimes, which make up Part 1 Crimes.



**System Security & Law Enforcement**  
**Los Angeles Police Department Transit Services Division**  
**Arrest Demographic**  
**01/01/2023 - 01/31/2023**

RAIL / STATION	MALE						FEMALE			TOTAL
	BLK	HISP	WHI	PAC ISLANDER	ASIAN	TOTAL	BLK	HISP	TOTAL	
RED	27	19	10	2	1	59	4	3	7	66
WESTLAKE / MACARTHUR PARK	4	4	4	1	0	13	0	2	2	15
WILSHIRE / VERMONT	7	2	3	0	0	12	2	0	2	14
UNION STATION	3	3	0	0	0	6	0	1	1	7
NORTH HWD	1	3	1	1	0	6	1	0	1	7
7TH & METRO CENTER	5	1	0	0	0	6	1	0	1	7
PERSHING SQUARE	2	2	1	0	1	6	0	0	0	6
HWD / VINE	3	2	0	0	0	5	0	0	0	5
UNIV CITY / STUDIO CITY	0	2	0	0	0	2	0	0	0	2
CIVIC CTR / GRAND PARK	0	0	1	0	0	1	0	0	0	1
HWD / WESTERN	1	0	0	0	0	1	0	0	0	1
VERMONT / SUNSET	1	0	0	0	0	1	0	0	0	1
BRT	7	7	0	0	0	14	0	2	2	16
CENTRAL BUREAU	4	3	0	0	0	7	0	2	2	9
SOUTH BUREAU	2	3	0	0	0	5	0	0	0	5
WEST BUREAU	0	1	0	0	0	1	0	0	0	1
VALLEY BUREAU	1	0	0	0	0	1	0	0	0	1
UNION STATION (Not Line Specific)	3	1	3	1	0	8	2	0	2	10
ORANGE	1	1	0	0	0	2	1	0	1	3
NORTH HWD	1	1	0	0	0	2	1	0	1	3
PURPLE	1	0	0	0	0	1	0	0	0	1
WILSHIRE / WESTERN	1	0	0	0	0	1	0	0	0	1
GOLD	0	1	0	0	0	1	0	0	0	1
SOTO	0	1	0	0	0	1	0	0	0	1
BLUE	1	0	0	0	0	1	0	0	0	1
7TH & METRO CENTER	1	0	0	0	0	1	0	0	0	1
GREEN	0	1	0	0	0	1	0	0	0	1
HARBOR FRWY	0	1	0	0	0	1	0	0	0	1
<b>TOTAL</b>	<b>40</b>	<b>30</b>	<b>13</b>	<b>3</b>	<b>1</b>	<b>87</b>	<b>7</b>	<b>5</b>	<b>12</b>	<b>99</b>
<b>% of TOTAL</b>	<b>40.4%</b>	<b>30.3%</b>	<b>13.1%</b>	<b>3.0%</b>	<b>1.0%</b>	<b>87.9%</b>	<b>7.1%</b>	<b>5.1%</b>	<b>12.1%</b>	<b>100.0%</b>



Los Angeles Sheriff's Department - Transit Services Bureau

Arrestee Information for the Month of January 2023

01/01/2023 - 01/31/2023

Premise	Female				Total Female	Male				Total Male	Total Arrest
	Black	Hispanic	Other	White		Black	Hispanic	Other	White		
L-Line - Sierra Madre Villa	0	0	0	1	1	0	2	0	2	4	5
L-Line - Arcadia	0	0	0	0	0	0	0	0	1	1	1
L-Line - Monrovia	0	0	0	0	0	0	0	0	0	0	0
L-Line - Duarte	0	0	0	1	1	0	1	0	0	1	2
L-Line - Irwindale	0	0	0	0	0	0	1	0	1	2	2
L-Line - Azusa Downtown	0	0	0	0	0	1	1	0	0	2	2
L-Line - APU/Citrus College	0	0	0	2	2	2	1	0	1	4	6
J-Line - Carson	0	0	0	0	0	0	0	0	0	0	0
J-Line - El Monte	0	0	0	0	0	0	2	0	0	2	2
Bus	8	7	1	1	17	16	53	2	11	82	99
Total	12	11	4	10	37	42	78	2	24	146	183

**Long Beach Police Department - Metro Transportation Detail**  
**Arrestee Demographic Stats - January 2023**  
**01/01/2023 - 01/31/2023**

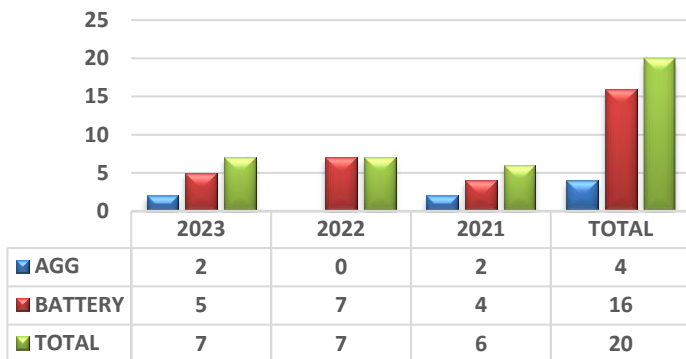
Rail / Station	Arr/Cite	Gender	Ethnicity	Age	Unhoused	Total
A-Line 1st Street	Arr	M	B	35	Yes	1
A-Line Pacific Coast Highway	Cite	M	B	37	No	1
<b>Total</b>						<b>2</b>

# Los Angeles Police Department - Transit Services Division Monthly Bus / Rail Operator Assault Recap Report

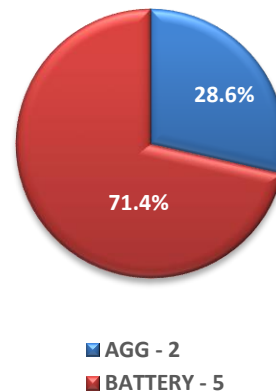


## JANUARY 2023

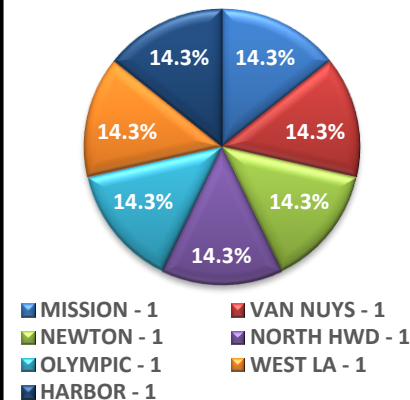
Crimes Against Persons  
Month of January 2023, 2022 & 2021  
Comparison



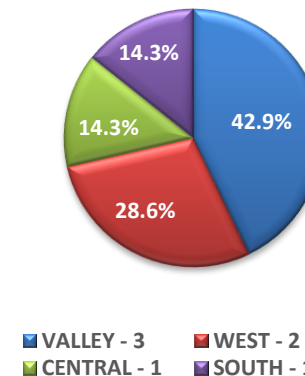
Type of Crime  
Month of January 2023



LAPD Area  
Month of January 2023



LAPD Bureau  
Month of January 2023



DATE & TIME	BUS / RAIL# LOCATION	NARRATIVE	SUSP INFO	TRANSIENT AND / OR MENTALLY DISABLED	BARRIER UTILIZED
01/03/23 @ 1040 HRS	Bus Line # 207 Bus # 8850 248 S. Western	<b>ADW / BB ROUNDS FIRED.</b> Victim drove bus and believe he heard shots fired towards his direction. Victim also observed visible damage to his window and windshield of the driver's side. LAPD Officers arrived and determined the rounds were fired from a nearby apartment building. Officers evacuated the apartment building. After several unsuccessful attempts, officers sought assistance from LAPD SWAT. SWAT responded and discovered the suspect deceased w/a self-inflicted gunshot wound to the mouth with an exit wound to the back of the head.  <b>INJURIES:</b> None. <b>NO ARREST:</b> Suspect deceased, self - inflicted gunshot wound.	M/B 29 YOA	No Yes	N/A
01/11/23 @ 0900 HRS	Bus Line # 33 Bus # 8625 Venice & National	<b>BATTERY</b> Victim passed suspect waiting at a bus stop due to the bus being full. Victim stopped at the next bus stop to allow bus patrons to exit. Suspect ran up to the bus, entered aggressively and swung her arm at victim. Victim stepped back and prevented contact with suspect. Suspect then spat on victim three times causing her saliva to land on victim's thigh. LAPD responded, victim pointed out suspect. Suspect was taken into custody.  <b>INJURIES:</b> Spit contact to victim's thigh. <b>ARREST</b>	F/B 21 YOA	Yes Unkn	Unkn

DATE & TIME	BUS / RAIL# LOCATION	NARRATIVE	SUSP INFO	TRANSIENT AND / OR MENTALLY DISABLED	BARRIER UTILIZED
01/13/23 @ 1545 HRS	Orange Line Van Nuys Station Bus Line # 901 Bus # 19519	<b>BATTERY</b> Victim instructed suspect to enter bus from the rear. Suspect entered bus, walked to the front of the bus, reached around the plexiglass and struck the right side of victim's face.  <b>INJURIES:</b> Too Nervous To Continue. <b>NO ARREST</b>	M/H 25 YOA	Unkn Unkn	Yes
01/19/23 @ 0700 HRS	Bus Line # 761 Bus # 1700 Van Nuys & Parthenia	<b>BATTERY</b> Suspect entered bus and advised he did not have bus fare. Victim allowed suspect to enter w/out paying fare. Suspect then placed items on the black box. Victim advised suspect to remove the items and to stand behind the yellow line. Suspect walked up to victim and spat once on victim. The plexiglass separated victim from suspect, however, some of the suspect's saliva made contact with victim.  <b>INJURIES:</b> Spit contact to victim. Victim requested to see company doctor. No man power available to restore service. <b>NO ARREST</b>	M/B 46 YOA	Unkn Yes	Unkn
01/24/23 @ 0930 HRS	Bus Line # 45 Bus # 1722 Gage & Broadway	<b>BATTERY</b> Suspect entered bus agitated due to the previous bus passing him at the bus stop and causing him to be late for work. Suspect accused victim of not driving fast enough. Suspect stated to victim, "I will smack you like the b..... you are!" Suspect reached over the plastic barrier and slapped victim's cheek. Victim defended herself by grabbing suspect's beanie in the hopes of deflecting suspect's assault. Victim pulled over, suspect exited and fled location.  <b>INJURIES:</b> Victim sustained cut on her hand. Officers observed victim bleeding. <b>NO ARREST</b>	M/B 30 YOA	Unkn Unkn	Yes
01/26/23 @ 2145 HRS	Bus Line # 162 Bus # 1766 Collins & Vineland	<b>BATTERY</b> Suspect walked to the front of the bus and demanded victim to stop and allow him to exit. Victim advised he had to wait until the next bus stop. Suspect became irate and began a verbal argument with victim. Suspect then threw an unknown liquid at victim then spat on victim. Victim stopped bus and allowed Suspect to exit.  <b>INJURIES:</b> Eye irritation. Victim was transported to Company Doctor. <b>NO ARREST</b>	M/H 20YOA	Unkn Unkn	Unkn
01/31/23 @ 2245 HRS	Bus Line # 246 Bus # 6124 22 <sup>nd</sup> St & Pacific Ave	<b>ADW (HATE CRIME)</b> Suspect laid on the front door of bus and yelled racial slurs at victim. Subject threw a glass bottle at victim, missing victim. Victim was standing outside bus when incident occurred.  <b>INJURIES:</b> None. <b>ARREST</b>	M/W 65 YOA	Yes Yes	N/A



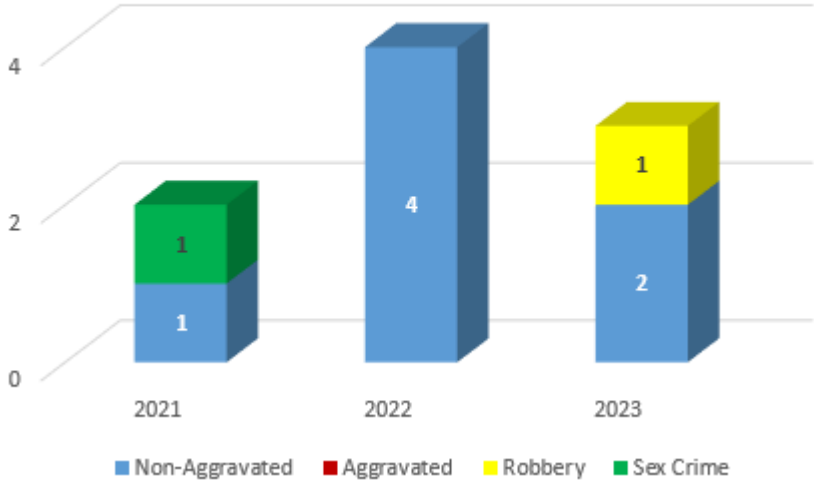
# Los Angeles County Sheriff's Department Transit Services Bureau Monthly Bus/Rail Operator Assault Report



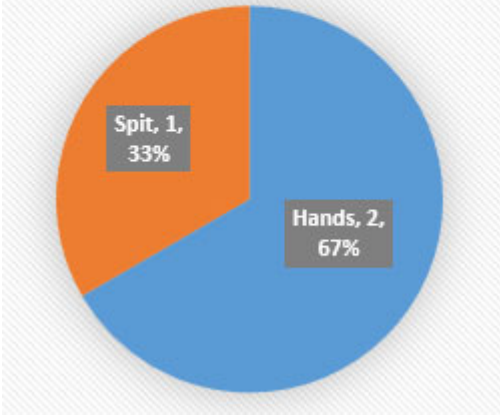
**January 2023**

## January Bus/Rail Operator Assaults

January 2021 - 2023 Assaults



January 2023  
Method of Assault



In January, there were two non-aggravated assaults and 1 robbery. There were no arrests.

Date	Time	Line	Bus #	Narrative	Barrier
1/25/2023	13:44	251	8572	Huntington Park 1/25 1344hrs Sus MH/40s punched bus op over loud music	Yes
1/26/2023	18:10	234	1976	San Fernando 1/26 1810hrs Sus MH/20s stole bus op's phone after spitting on bus op. Bus Op asked suspect to stop cussing at a juvenile.	Yes
1/27/2023	13:25	115	6009	Inglewood 1/27 1325hrs Sus FO punched bus op during argument	Yes

\*B (NU): Barrier installed, not used; N/A (o): Not applicable, assault occurred outside of barrier





## System Security & Law Enforcement

Attachment H

### Sexual Crime / Harassment Calls for Service January 2023

Calls related to sexual harassment are routed through Metro Transit Security Operations Center, which then transfers the caller to a free 24/7 hotline — Peace Over Violence, Center for the Pacific Asian Family Inc., and Sister Family Services — that can provide more directed counseling. Between January 1<sup>st</sup> and January 31<sup>st</sup>, Metro Transit Security, LAPD, LASD, and LBPD received three (3) incidents and referred all three victims of sexual harassment to the above free hotlines.

January 2023 Incident Type & Totals					
	LAPD	LASD	LBPD	MTS	SSLE
Sexual Harassment	0	0	0	0	0
Sexual Battery	2	0	0	0	2
Lewd Conduct	0	1	0	0	1
Indecent Exposure	0	0	0	0	0
Rape	0	0	0	0	0
<b>TOTAL</b>	<b>2</b>	<b>1</b>	<b>0</b>	<b>0</b>	<b>3</b>

Counseling Information Provided	
	January 2023
YES	3
NO- If no, why?	0
Gone On Arrival	0
Did Not Have Info	0
Telephonic Report	0
Not Offered	0
Refused	0
Officer Witnessed Incident	0
<b>TOTAL</b>	<b>3</b>



## System Security & Law Enforcement

Attachment H

Metro Partner	Call Type	Incident (Date/ Time)	Location of Occurrence	Disposition	LE/ MTS/ Other on Scene (Date/Time)
LAPD	Sexual Battery	1/17/23 1616 hrs.	Red (Westlake)	Suspect groped the victim's buttocks while on escalator.	1/17/2023 1637 hrs.
LAPD	Sexual Battery	1/24/23 1215 hrs.	Bus	Suspect groped the victim's buttocks while exiting the rear door of the bus.	1/24/2023
LASD	Lewd Conduct	01/05/2023 1440hrs	Bus line 94 in Glendale	Suspect MB/50yrs arrested for lewd conduct on bus.	1/5/2023 1510hrs

# March 1, 2023

## Fare Observation Reports



Prepared by  
Mobility Advancement Group

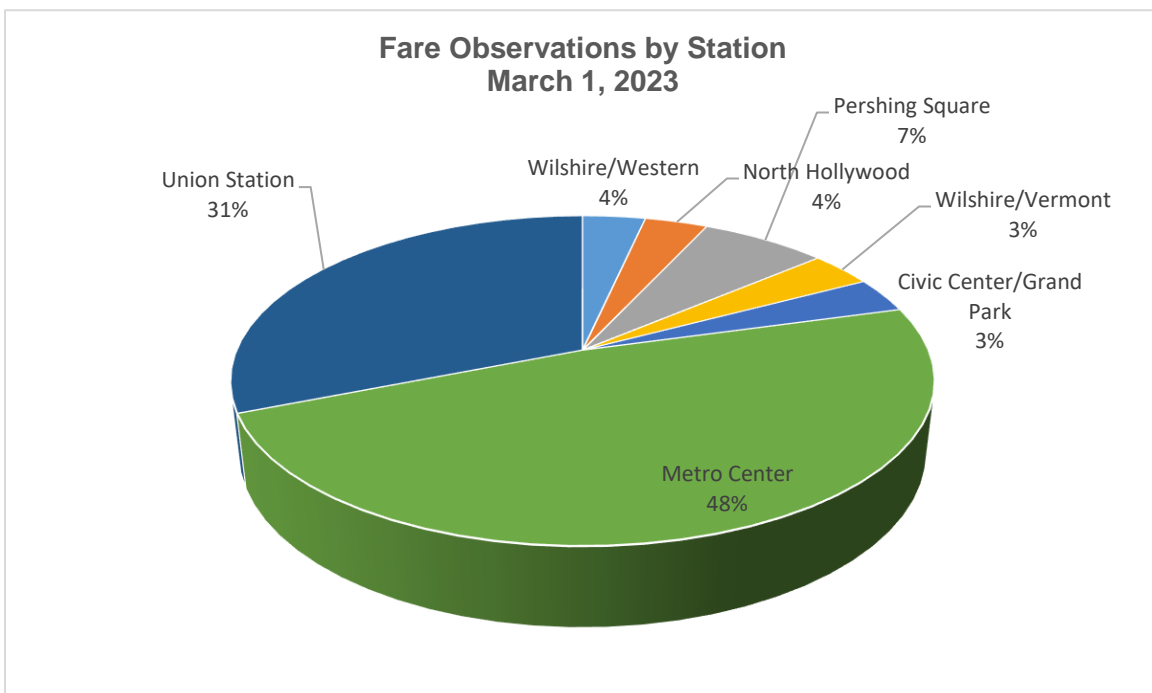
## INTRODUCTION

On March 1, 2023 three transit surveyors conducted 29 fare observations at seven Red Line Stations. The purpose of these surveys was to observe any fare enforcement actions by Safety System-Law Enforcement (SSLE) personnel.

3,856 passenger boardings were observed.

## STATIONS SURVEYED

Seven Red Line Stations were surveyed during the peak hour periods. The percentage of surveys by stations is shown below.



## **FARE ENFORCEMENT ACTIVITY**

Six checks for payment were made at Metro Center, North Hollywood, and Union Station.

Five fare checks were conducted by Metro Security Officers and one by Metro Ambassadors. This is noted on report #405.

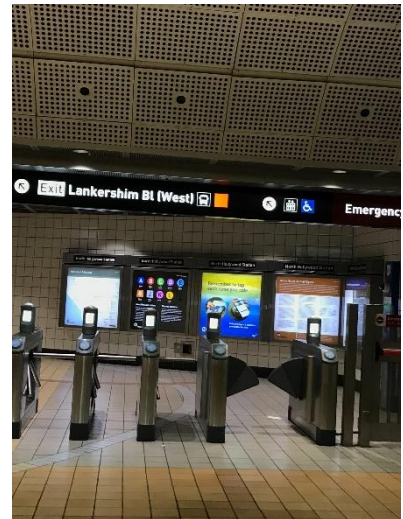
Eleven reports noted the presence of LAPD officers. LAPD officers did not perform any fare enforcement activities.

## **LAW ENFORCEMENT ACTION**

Reports #404 and #410 contain notes of LAPD arrests. These arrests did not involve fare enforcement.

## **REPORTS**

Copies of all twenty-nine (29) reports are included in an attached Excel file.



### Fare Observation Surveys-Rail-March 1, 2023

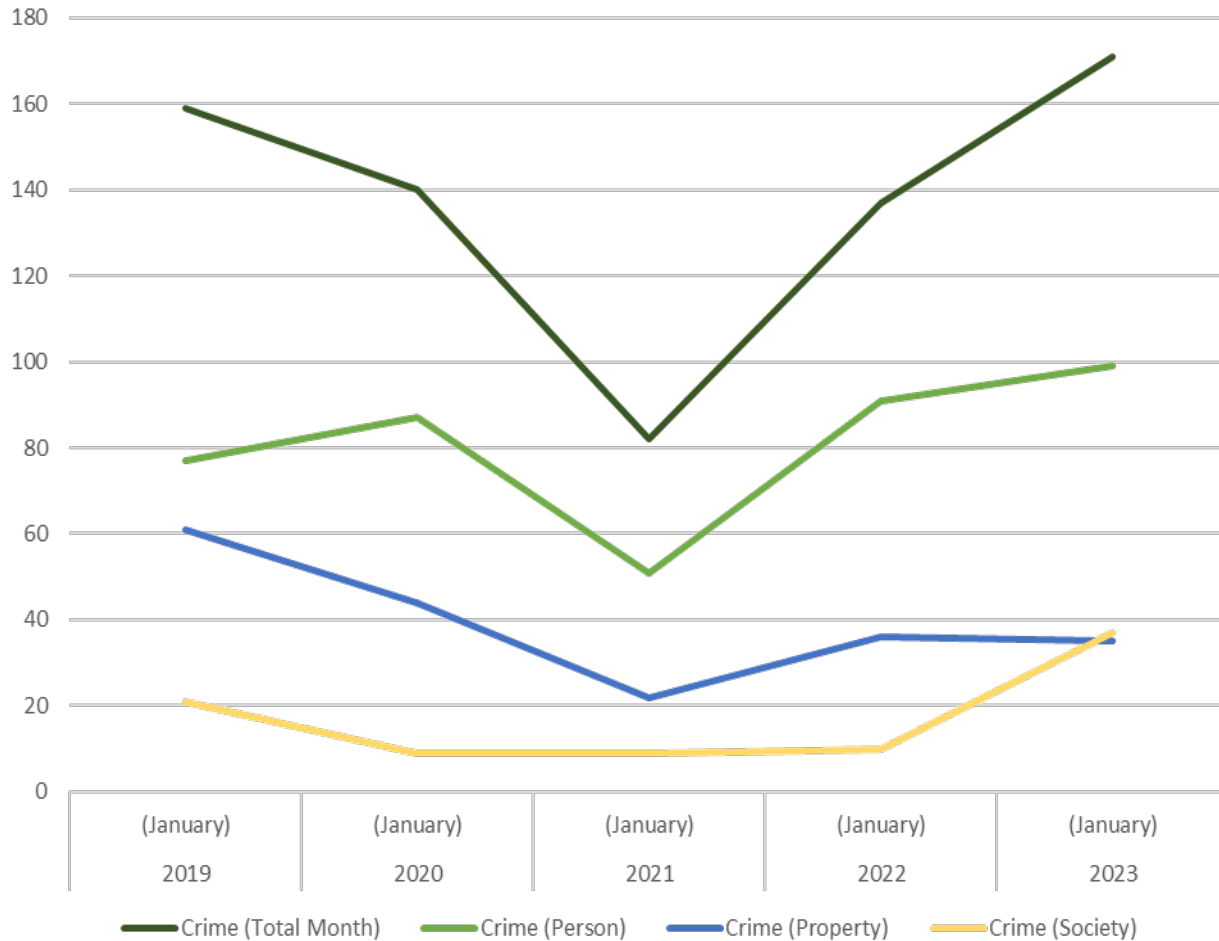
Sample	Date	Station	Observer	Start Time	End Time	Total Time	Passengers	SSLE?	Fares Checked?	Notes
400	03/01/23	Union Station-Red Line	Observer102	6:30 AM	6:50 AM	0:20	143	No	No	
401	03/01/23	Union Station-Red Line	Observer102	6:52 AM	7:13 AM	0:21	167	Yes	No	Metro Security
402	03/01/23	Pershing Square	Observer102	7:21 AM	7:42 AM	0:21	85	No	No	
403	03/01/23	Metro Center-Red Line	Observer102	7:46 AM	8:06 AM	0:20	172	Yes	No	Metro Security
404	03/01/23	Metro Center-Blue Line	Observer102	8:08 AM	8:34 AM	0:26	271	Yes	Yes	LAPD & Metro (at turnstiles). Note LAPD arrest.
405	03/01/23	North Hollywood	Observer102	9:14 AM	9:34 AM	0:20	104	Yes	Yes	Private Security. Metro Ambassadors were at turnstiles.
406	03/01/23	Metro Center-Blue Line	Observer113	6:27 AM	6:48 AM	0:21	68	Yes	No	LAPD
407	03/01/23	Metro Center-Red Line	Observer113	6:49 AM	7:10 AM	0:21	102	Yes	No	Metro Security
408	03/01/23	Union Station-Red Line	Observer113	7:13 AM	7:34 AM	0:21	92	Yes	No	LAPD
409	03/01/23	Pershing Square	Observer113	7:53 AM	8:11 AM	0:18	57	No	No	
410	03/01/23	Metro Center-Red Line	Observer113	8:12 AM	8:33 AM	0:21	112	Yes	No	LAPD & Homeland Security. Note LAPD arrest.
411	03/01/23	Metro Center-Blue Line	Observer113	8:34 AM	9:05 AM	0:31	87	Yes	No	LAPD & Homeland Security.
412	03/01/23	Union Station-Red Line	Observer 114	6:59 AM	7:20 AM	0:21	273	Yes	No	LAPD & Metro Security
413	03/01/23	Union Station-Red Line	Observer 114	7:21 AM	7:45 AM	0:24	104	Yes	Yes	Metro and LAPD. Metro checked fares on train.
414	03/01/23	Civic Center/Grand Park	Observer 114	7:51 AM	8:12 AM	0:21	37	No	No	Metro Ambassadors
415	03/01/23	Wilshire/Vermont	Observer 114	8:15 AM	8:43 AM	0:28	97	Yes	No	Metro Ambassadors & Private Security
416	03/01/23	Metro Center-Red Line	Observer 114	8:47 AM	9:07 AM	0:20	244	Yes	No	Metro Ambassadors & Private Security
417	03/01/23	Metro Center-Blue Line	Observer 114	9:08 AM	9:32 AM	0:24	228	Yes	No	LAPD, Metro Ambassadors, Metro Security, & Private Security
418	03/01/23	Union Station-Red Line	Observer102	2:53 PM	3:13 PM	0:20	66	No	No	Metro Ambassadors next to TVMs.
419	03/01/23	Metro Center-Blue Line	Observer113	2:45 PM	3:06 PM	0:21	96	Yes	Yes	See note on Metro Security fare enforcement.
420	03/01/23	Metro Center-Red Line	Observer113	3:07 PM	3:28 PM	0:21	124	Yes	Yes	See note on Metro Security fare enforcement.
421	03/01/23	Union Station-Red Line	Observer113	3:37 PM	3:57 PM	0:20	66	Yes	No	Private Security
422	03/01/23	Union Station-Red Line	Observer113	3:58 PM	4:19 PM	0:21	73	Yes	No	Private Security
423	03/01/23	Pershing Square	Observer113	4:27 PM	4:48 PM	0:21	68	Yes	No	LAPD
424	03/01/23	Pershing Square	Observer 114	3:19 PM	3:42 PM	0:23	58	Yes	No	LAPD & Metro Security
425	03/01/23	Metro Center-Red Line	Observer 114	3:47 PM	4:07 PM	0:20	379	Yes	No	LAPD & Metro Ambassadors
426	03/01/23	Metro Center-Blue Line	Observer 114	4:08 PM	4:28 PM	0:20	275	Yes	Yes	LAPD, Metro Ambassadors & Metro Security by turnstiles.
427	03/01/23	Union Station-Red Line	Observer 114	4:37 PM	4:57 PM	0:20	94	No	No	Metro Ambassadors next to TVMs.
428	03/01/23	Wilshire & Western	Observer 114	4:58 PM	5:20 PM	0:22	114	Yes	No	Private Security
429	04/14/22	Wilshire/Normandie	Observer102	3:35 PM	4:14 PM	0:39	51	No	No	

# Monthly Public Safety Update

GINA OSBORN

CHIEF SAFETY OFFICER

Rail Overall Crime Rate



Rail Statistics (January)	2019 (January)	2020 (January)	2021 (January)	2022 (January)	2023 (January)
Crime (Total Month)	159	140	82	137	171
Crime (Person)	77	87	51	91	99
Crime (Property)	61	44	22	36	35
Crime (Society)	21	9	9	10	37

Jan 2023 vs Jan 2022

- 25% increase (171 vs 137) in Total Crime on the Rail System
- 270% increase (37 vs 10) in “Society” Crimes on the Rail System due largely to drug violations

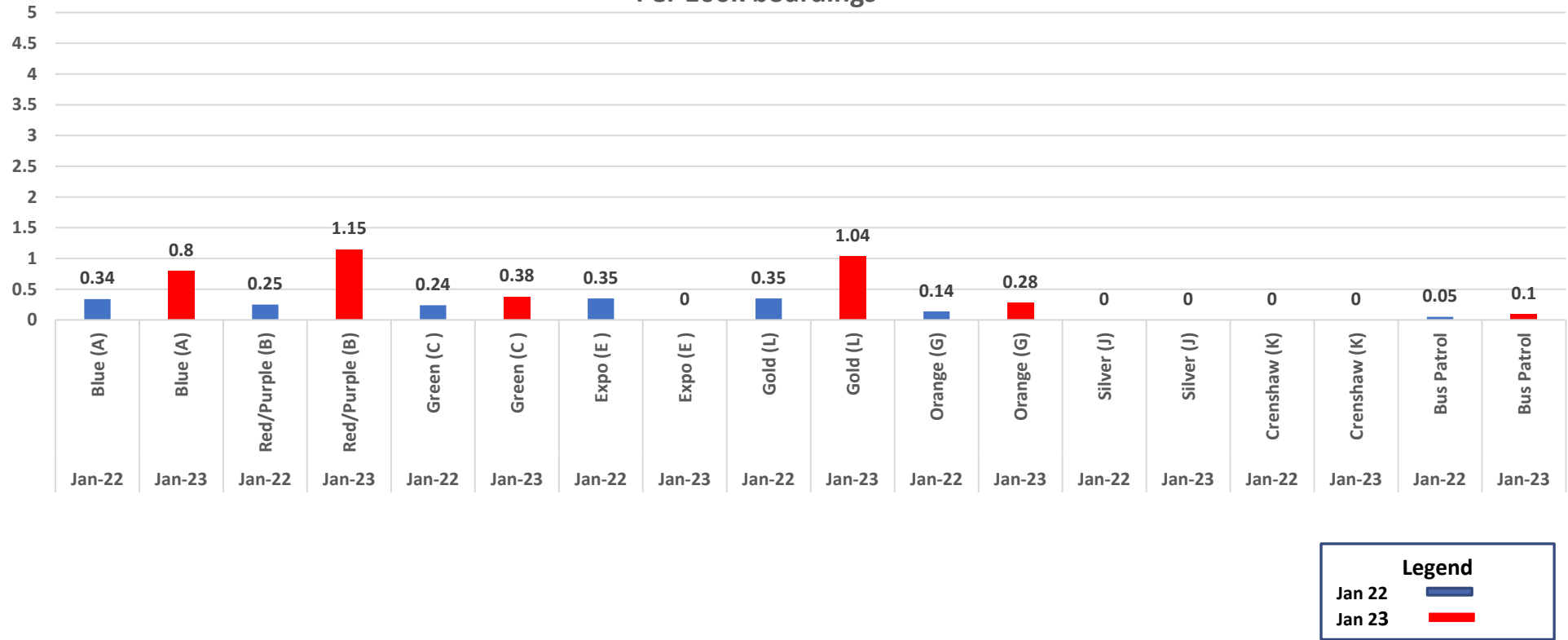
Crimes Against Person- Violent crimes (i.e. homicide, aggravated assaults) are those in which the victims are always individuals.

Crimes Against Property - Crimes to obtain money, property, or some other benefit (i.e. theft, vandalism, robbery).

Crimes Against Society - Represent society’s prohibition against engaging in certain types of activity (i.e. drug violations).

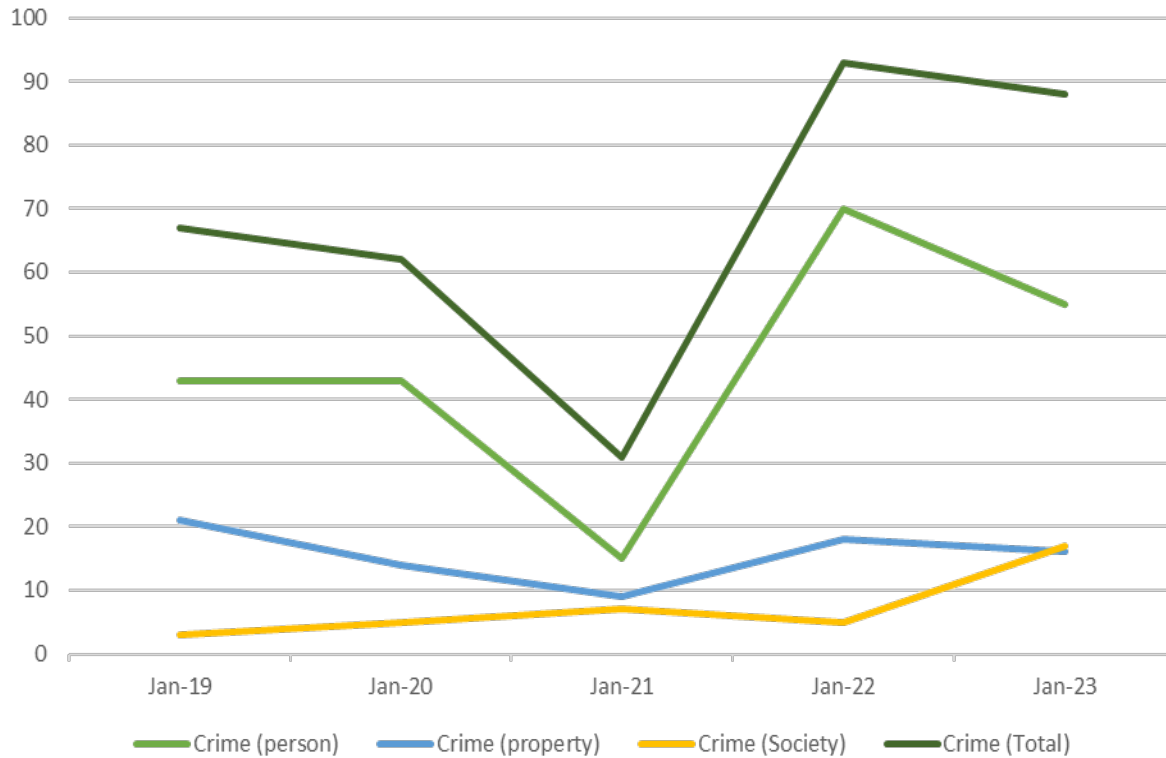


**Crimes Against Society  
Jan 2022 vs Jan 2023  
Per 100k boardings**



- Part 2 crimes (crimes against society such as narcotics, trespassing, or weapons possession) increased in both trespassing and narcotic possession/use incidents on the Blue, Red, Green, and Gold and Orange Lines. There was a minimal increase on the Bus lines.
- The increases related to the Red/Purple and the Gold line was due to an increase in trespassing and narcotics incidents.

BUS OVERALL CRIME JANUARY YEAR OVER YEAR COMPARISON



Bus Statistics (January)	2019 (January)	2020 (January)	2021 (January)	2022 (January)	2023 (January)
Crime (Total Month)	67	62	31	93	88
Crime (person)	43	43	15	70	55
Crime (Property)	21	14	9	18	16
Crime (Society)	3	5	7	5	17

Jan 2023 vs Jan 2022

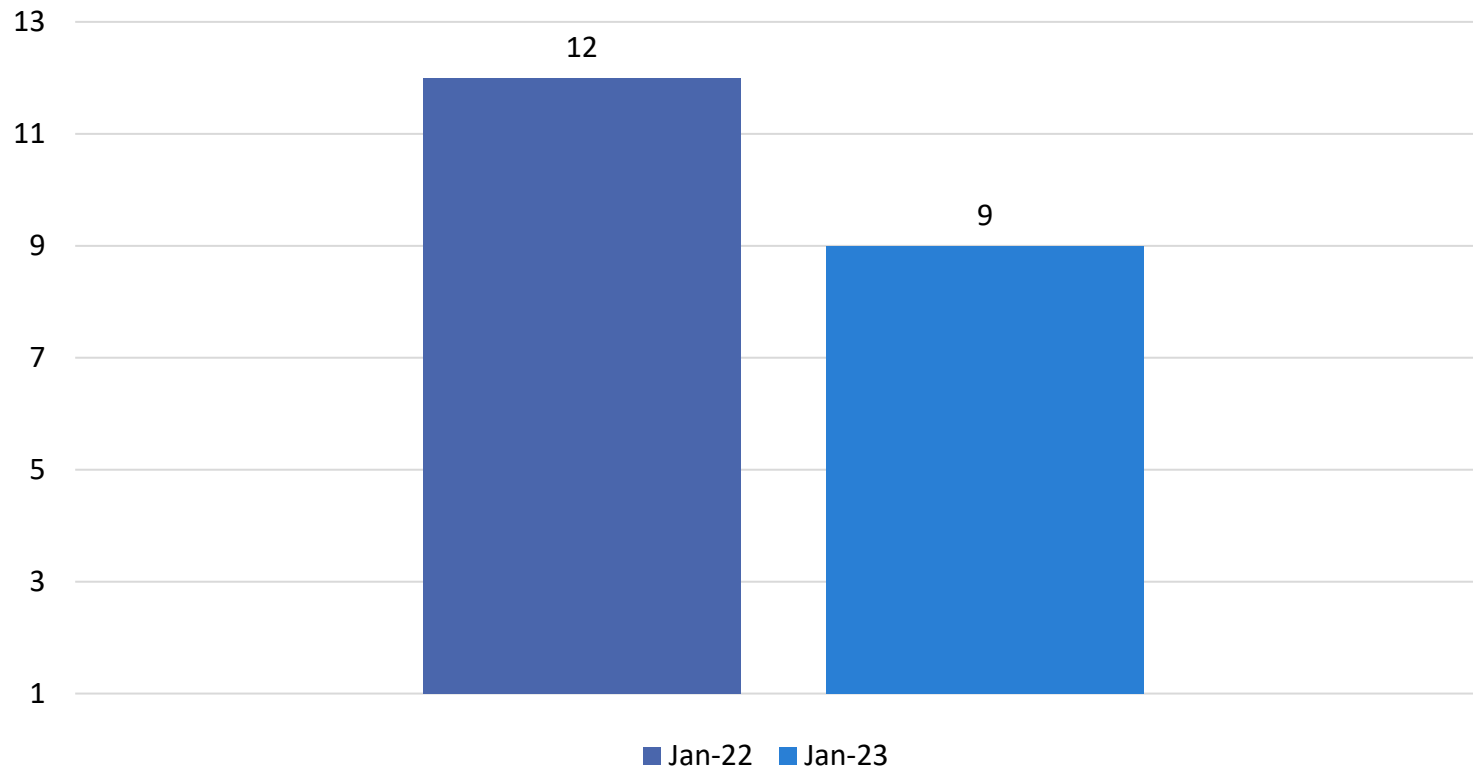
- 5% decrease (88 vs 93) in Total Crime on Bus due to decrease in “Person” Crimes (55 vs 70)
- 240% increase (17 vs 5) in “Society” Crimes on Bus due largely to drug violations.

Crimes Against Person- Violent crimes (i.e. homicide, aggravated assaults) are those in which the victims are always individuals.

Crimes Against Property - Crimes to obtain money, property, or some other benefit (i.e. theft, vandalism, robbery).

Crimes Against Society - Represent society’s prohibition against engaging in certain types of activity (i.e. drug violations).

# January 2023 Bus Operator Assaults



- In January, there were a total of 9 bus operator assaults. These assaults represent a 31% decrease from December 2022 and a 16.7% decrease compared to 2022.
- 45% of incidents were caused by no discernible reason or as a result of a missed stop.
- 80% of reported incidents occurred between the hours of 6am and 6pm.

# Anti-Drug Campaign Results

---

## 2/13/2023-3/11/2023:

On February 13<sup>th</sup>, Metro launched a 30-day Anti-Drug Campaign, using a comprehensive, layered approach to increase the feeling of safety of riders and employees by decreasing crime while taking a holistic approach that offered mental health/social services and a drug diversion program for those experiencing homelessness or suffered from drug addiction.

The Anti Drug Campaign was rolled out on the Red, Blue, and Gold lines and was supported by Transit Ambassadors, MTS, Contract Security, LAPD, LASD, PATH, and various social services teams.

- **Overall the Anti-Drug campaign resulted in a 10% decrease in customer reported drug related complaints on the system.**
- **By week 4 of the campaign, Transit Watch reports related to Smoking/Alcohol/Drugs was significantly reduced compared to Week 1. Week 1 had a total of 701 reports but by Week 4 the total was 154 (78% reduction).**
- 68 citations and 36 warnings were issued by MTS.
- Law enforcement conducted 205 drug related arrests.

Our law enforcement partners and PATH outreach workers already carry Narcan. Staff completed the rollout of Narcan to Metro Transit Security on March 10th. Staff is working on a plan for Metro Ambassadors to be trained and issued Narcan.

# Metro Ambassadors Update

---

## SUPPORT

**245** Metro Ambassadors riding and roving on:

- Bus routes: 40, 210, 20, 720
- Silver Line
- Rail Lines: A, B, C, D, K, L

**60** more Ambassadors currently in training

## CONNECT

Conducted **58,232** customer interactions\*

## REPORT

1,493 cleanliness issues

- 497 graffiti incidents
- 404 elevator and escalator problems
- 322 safety issues

\*Reporting period: 1/6/2023 – 3/2/2023



# Good News Stories

Customer report received via email on 3/18/2023 11:21AM.

“Hi, I travel on the metro every week with my 2 yr old son. There are many types of people on the train, and we don't always feel safe. I very much appreciate the role of the Ambassadors in making me feel safer using it. All of them have been kind and friendly and professional and my son loves to see them. It's great that they are so visible. Please continue this program.”