



Metro

Los Angeles County  
Metropolitan Transportation  
Authority  
One Gateway Plaza  
3rd Floor Board Room  
Los Angeles, CA

## Board Report

---

**File #:** 2023-0151, **File Type:** Oral Report / Presentation

**Agenda Number:** 5.

---

**INDEPENDENT CITIZEN'S ADVISORY AND OVERSIGHT COMMITTEE  
MARCH 13, 2023**

**SUBJECT: ORAL REPORT ON TRANSIT CAPITAL PROJECTS**

**ACTION: ORAL REPORT**

**RECOMMENDATION**

RECEIVE Oral Report on Transit Capital projects.

**INDEPENDENT CITIZENS' ADVISORY AND OVERSIGHT COMMITTEE**


# **Program Management**

## **(PROP A/C Capital Projects)**

# Crenshaw/LAX Closeout Project

SCHEDULE			Revenue Operation	
	Original	Approved Rebaseline	Previous Period	Current Forecast*
	April 2024	April 2024	Spring 2024	Spring 2024
	Variance from Original:		0	0
Variance from Revised Schedule:		NA	NA	

\* Current Forecast is Contract dates for First Closeout contract C1217 (CLAX Punch-Out Work)

BUDGET			Previous Period	Current Forecast**
		Approved LOP*		
		\$47M	\$47M	\$57M
	Variance from Approved LOP:		\$0M	\$10M
Variance from Revised Budget:		\$0M	\$10M	

\* Board approved \$30M of LOP budget in 05/2020 and LOP budget increase (\$17M) approved in 06/2022

\*\* Pending Board approval for LOP increase. Refer to 2023 Annual Program Evaluation (APE) for more details





# Crenshaw/LAX Closeout Project

## Safety

- C1217: Project Hours: TBD; Recordable Injury Rate: TBD
- C1221: Project Hours: TBD; Recordable Injury Rate: TBD

## Updates

- C1217, C/LAX Punch Out Work, NTP issued on August 25, 2022.
  - Overall Project Progress is **36%** complete.
  - Milestone No. 1 scope in support of K-Line revenue service date was achieved (Palm tree trimming over tracks, radio fiber, signage and 6" waterline).
  - Project staff continues to work with Metro Operations track allocation for access as needed.
  - Major remaining work includes Left turn gates at 6 intersections, Traffic signal at Florence & West, 24" waterline at MLK station, Small transformer replacement at TPSS 8, Map cases and painting of emergency exit hatches.
  - Contract completion is planned for April 16, 2024.
- C1221, K-Line Paving & Improvements Contract#2 is currently in scope development and design phase.
  - Fairview Heights parking lot with CCTV and EV chargers, Paving & striping, guardrails, K rails, civil improvements and bird deterrent at stations including Operations Misc. items.
  - Additional scope is being developed.

## Equity

- Scope of work is (100%) within or adjacent to Equity Focus Communities.





Trimming trees at WB Florence between High street/Prairie





Preparing & Installation of PVC pipe at Florence between Prairie/High Street



# Airport Metro Connector (AMC) Project

SCHEDULE			Revenue Operation	
	Original	Approved Rebaseline	Previous Period	Current Forecast*
	N/A	N/A	Fall 2024	Fall 2024
	Variance from Original:		+0d (0%)	+0d (0%) 
Variance from Revised Schedule:			N/A 	

\* Current Forecast is Metro's August 2022 Schedule Update

BUDGET			Previous Period	Current Forecast
		Approved LOP*		
		\$898.6M	\$898.6M	\$898.6M
	Variance from Approved LOP:		\$0M (0%)	\$0M (0%) 
Variance from Revised Budget:			\$0 	

\* Approved April 2021 Board





# Airport Metro Connector (AMC) Project

## Safety

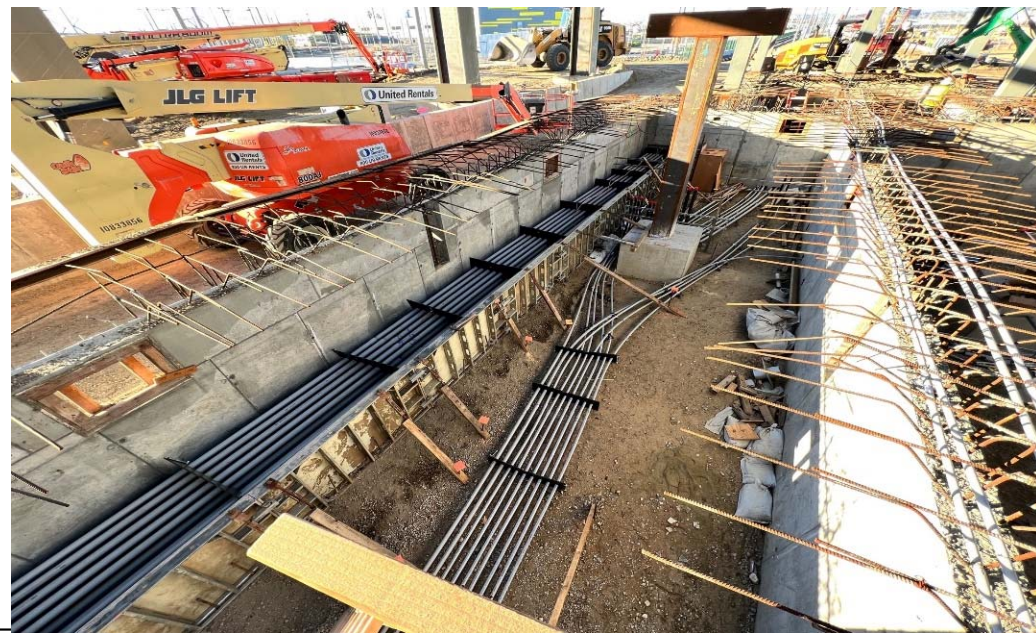
Project Hours: 280,039; Recordable Injury Rate: 2.14 vs. The National Average: 2.4

## Updates



- Overall project is 55% complete.
- Primary Station Construction (38% ) has advanced with completing the steel structure in the LRT area and starting steel erection in the Metro Hub area. Station concrete platform, underground utilities, and procurement of long-lead material continues. Roof framing and installation of MEP supports has started in the LRT area. The construction of the ancillary buildings has started. The installation of LADWP underground infrastructure on Aviation Blvd for permanent power has started. Work within the Light Rail Transit (LRT) area has been accelerated.

## Equity



- 100% of the project is located within or adjacent to Equity Focus Communities.



# Metro Center Project (MCP)

SCHEDULE			Substantial Completion	
	Original	Approved Rebaseline	Previous Period	Current Forecast*
	Winter 2022	N/A	Winter 2023	Winter 2023
	Variance from Original:		+0d (0%)	+347d (47%) 
Variance from Revised Schedule:			N/A 	

\* Current Forecast is Metro's December 2022 Schedule Update

BUDGET			Previous Period	Current Forecast**
		Approved LOP*		
		\$130.7M	\$130.7M	\$143.7M
	Variance from Approved LOP:		\$0M (0%)	\$13M (10%) 
Variance from Revised Budget:			\$0 	

\* Approved Oct 2020 Board

\*\* Pending Board approval for LOP increase. Refer to 2023 Annual Program Evaluation (APE) for more details





# Metro Center Project (MCP)

## Safety

Project Hours: 73,966; Recordable Injury Rate: 0.0 vs.  
The National Average: 2.4

## Updates

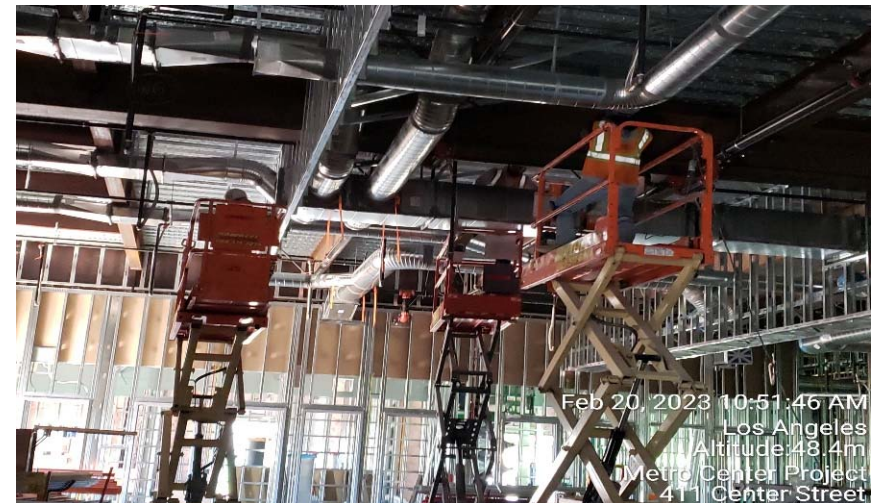
- Overall project progress is 67% complete.
- Structures, metal decking, roof deck concrete, exterior framing and sheathing completed
- To be continued through next quarter:
  - Exterior finish
  - Roofing weathertight
  - Interior Mechanical, Electrical and Plumbing (MEP) rough-ins
  - Interior drywalls
  - Site civil work for underground utilities

## Equity

- This project is not located within or adjacent to Equity Focus Communities.



Exterior Finish – Weather Barrier & Sheet Metal



Interior MEP Rough-Ins & Metal Framing 1<sup>st</sup> Floor

