



Metro

## Board Report

Los Angeles County  
Metropolitan Transportation  
Authority  
One Gateway Plaza  
3rd Floor Board Room  
Los Angeles, CA

---

**File #:** 2023-0686, **File Type:** Oral Report / Presentation

**Agenda Number:** 8.

---

### **MEASURE M INDEPENDENT TAXPAYER OVERSIGHT COMMITTEE DECEMBER 6, 2023**

#### **SUBJECT: MEASURE M ACTIVE TRANSPORTATION UPDATES**

RECEIVE oral report on Measure M Active Transportation, programmed revenues and uses to support discussion on the effective and efficient use of funds.

#### **ATTACHMENTS**

Attachment A - Presentation

Prepared by: James Andrew, Senior Manager, Countywide Planning & Development, (213) 547-4306  
Peter Carter, Senior Director, Countywide Planning & Development, (213) 922-7480  
Cory Zelmer, Deputy Executive Officer, Countywide Planning & Development, (213) 922-1079  
Allison Yoh, Executive Officer, Countywide Planning & Development, (213) 922-4812  
David Mieger, Senior Executive Officer, Countywide Planning & Development, (213) 922-3040  
Ray Sosa, Deputy Chief Planning & Development Officer, (213) 547-4274

Reviewed by: James de la Loza, Chief Planning Officer, (213) 922-2920



**Metro is making it easier to walk, bike, and roll.**

ACTIVE TRANSPORTATION UPDATES

MEASURE M INDEPENDENT TAXPAYER OVERSIGHT COMMITTEE

DECEMBER 6, 2023



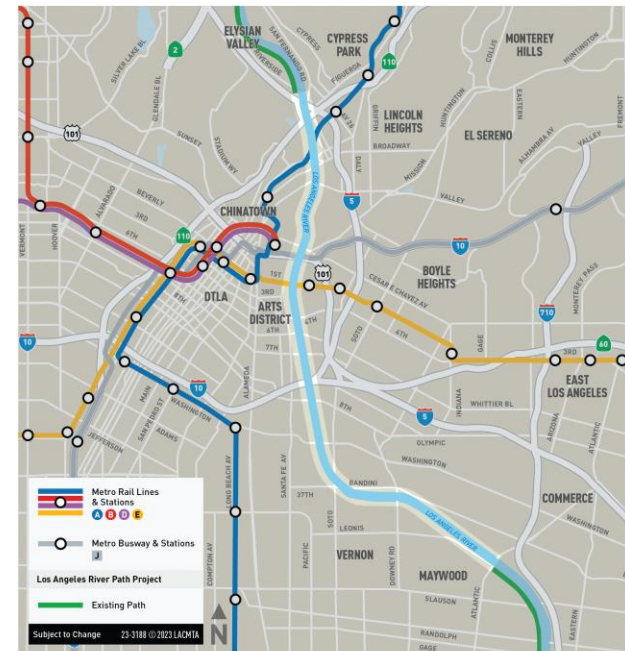
**Metro**

# LA River Waterway & System Bike Path (Central Cities)

- > Project led by Metro
- > Environmental and Design Progress
  - 30% design completed for all three alternatives
  - Draft EIR release anticipated in Spring 2024 with a 60-day comment period
  - Selection of a single alternative and start of 60% design in Winter 2024/2025 (*subject to comments from both USACE and LADWP that may affect project definition and EIR alternatives*)
  - Advancement of 60% design is subject to determination of the Project's final owner/O&M entity (*since Metro will not be financially responsible for O&M of the completed project*)
- > Agreements with Third Parties
  - MCA with the City of Vernon is ready for execution
  - Agreements needed with the County and City of LA, LADWP, Railroads, and Caltrans
  - O&M lead, external to Metro, yet to be determined



Looking south: near Riverside Drive



Project Area Map



# Complete LA River Bike Path (San Fernando Valley)

- > LA Bureau of Engineering is Lead Agency
- > 13 miles of bikeway gap closures
  - 9 segments from Vanalden Ave to Forest Lawn Dr
  - Segments 1-2 in Design phase; Segments 3-9 Design initiation TBD
- > \$60M in Measure M funding between FY23-FY28; agreement pending
- > City of LA awarded \$34M in ATP Cycle 6 funding
- > Metro will not be financially responsible for O&M



Segment of LA River Bike Path completed in 2014

Project Corridor Map

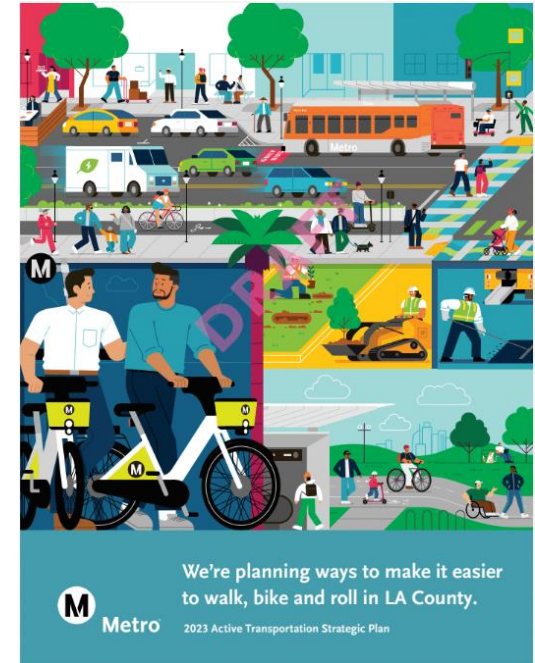
# Multi-Year Subregional Programs

- > Board approved an additional \$20M for a total of \$68M programmed for **South Bay Cities** projects:
  - Bike Lanes – Carson St, Figueroa St, Main St, Victoria St
  - Bike Lanes – 223rd St, Avalon Blvd, Central Ave, Del Amo Blvd, University Dr
  - South Bay Local Travel Network-El Segundo
  - Lennox Vision Zero Traffic Enhancements
  - Highland Ave Corridor Improvements
  - Aviation Blvd Pedestrian Enhancements
  - Riviera Village Pedestrian Enhancements
  - South Bay Local Travel Network-Redondo Beach
- > Board approved an additional \$2M for a total of \$29M programmed for **Westside Cities** projects:
  - Sepulveda Corridor Mobility Lane Project
  - Fountain Ave Protected Bike Lanes



# Active Transportation Strategic Plan (ATSP)

- > Presented to Metro Board for adoption in November 2023
- > First update of 2016 plan and includes:
  - [StoryMap](#)
  - [First/Last Mile Existing Conditions Dashboard](#)
  - [Bikeway Benefits Dashboard](#)
- > Defines and prioritizes regional AT network
  - 602 First/Last Mile Areas
  - 81 Pedestrian Districts
  - 1,433 mi of Regional Bikeways
- > Prioritizes network based on equity, safety & comfort, accessibility, connectivity, sustainability, demand & community support, and project readiness to support Metro's funding role
- > Near-term implementation goal of Top 2.5% of projects by subregion





# Metro Active Transport Program



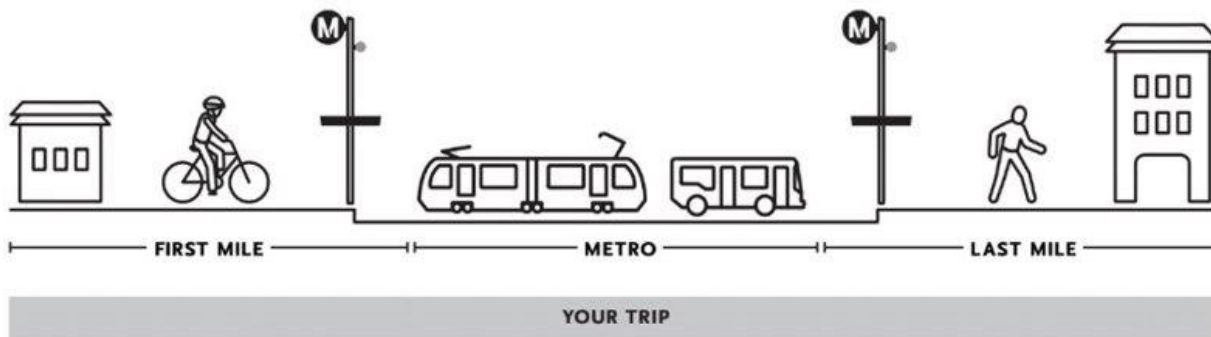
Metro Active Transport Program Cycle 1 Projects (approved in 2021)



- > Measure M competitive grant program dedicated for active transportation (\$857M thru 2057)
- > Implementation of ATSP regional network
- > \$63.1M in Cycle 1 projects approved by Board in 2021
  - 5 AT Corridors
  - 11 FLM Areas
- > Cycle 2 in development
  - Standardize process for project initiation
  - Develop and test new partnership models
  - Adapt successful models from other modes
  - Target award FY 2024-2025

# First/Last Mile Program

- > FLM Plans Currently in Progress:
  - West Santa Ana Branch (complete spring 2024)
  - Eastside Phase 2 (complete summer 2024)
- > Commencing soon
  - North Hollywood to Pasadena BRT
- > Other
  - FLM project coordination for LA28 Games preparation



©NOT TO SCALE





# Thank you



James Andrew, *Senior Manager Planning*  
Metro  
One Gateway Plaza, MS 99-22-22  
Los Angeles, CA 90012



213.547.4306



*andrewj@metro.net*



*metro.net/about/active-transportation/*



*@metrolosangeles*



*losangelesmetro*