



Metro

Los Angeles County  
Metropolitan Transportation  
Authority  
One Gateway Plaza  
3rd Floor Board Room  
Los Angeles, CA

## Board Report

**File #:** 2023-0695, **File Type:** Oral Report / Presentation

**Agenda Number:** 7.

### MEASURE M INDEPENDENT TAXPAYERS OVERSIGHT COMMITTEE DECEMBER 6, 2023

**SUBJECT: ORAL REPORT ON TRANSIT AND HIGHWAY CAPITAL PROJECTS**

**ACTION: RECEIVE ORAL REPORT**

#### **RECOMMENDATION**

RECEIVE oral report on Transit and Highway Capital Projects to support discussion on the effective and efficient use of funds.

Prepared by: Julie Owen, Senior Executive Officer, Project Management Oversight, (213) 922-7313  
Joseph Forgiarini, Senior Executive Officer, Service Planning and Development, (213) 418-3400  
Allison Yoh, Executive Officer, Countywide Planning & Development, (213) 922-4812  
David Mieger, Senior Executive Officer, Countywide Planning & Development, (213) 922-3040  
Nelli Derderian, Director, Complete Streets & Highways, (213) 418-3246  
Avital Barnea, Senior Executive Officer, Countywide Planning & Development, (213) 922-4812  
Ray Sosa, Deputy Chief Planning and Development Officer, (213) 547-4274  
Sameh Ghaly, Deputy Chief Program Management Officer, (213) 922- 7382

Reviewed by: Jim de la Loza, Chief Planning Officer, (213) 922-2920

Darcy Buryniuk, Chief Program Management Officer, (213) 922-2250

#### **ATTACHMENT**

Attachment A - Transit & Highway Capital Update

# Transit & Highway (Capital) Update

Review comparison of budget expended to project milestone completion, comparison of contingency spent to project completion, and review of soft costs spent

**Measure M Committee**

December 2023

# Transit / Highway Engineering and Construction

## Construction Projects



- **Gold Line Foothill Extension Phase 2B – Pomona**
- **Airport Metro Connector**
- **Westside Purple Line – Section 3**
- **I5N County Enhancements**

**Julie Owen**



Senior Executive Officer, Project Management Oversight



# Gold Line Foothill Extension Phase 2B

BUDGET				
		Approved LOP*	Previous Period	Current Forecast
		\$1,533M	1,533M	\$1,533M
	Variance from Approved LOP:	\$0M (0%)		\$0M (0%) 
	Variance from Revised Budget:			\$0 

\* At time of the award of contract – Board Approval (June 2017)

SCHEDULE			Revenue Operation	
	Original *	Approved Rebaseline	Previous Period	Current Forecast**
	January 2025	N/A	Summer 2025	Summer 2025
	Variance from Original:	0d (0%)		0d (0%) 
	Variance from Revised Schedule:	n/a		n/a 

\* The Original date reflects the Authority's Substantial Completion date

\*\* Current Forecast is from the Authority's June 2023 Schedule Update. Authority forecasts Substantial Completion at January 2025, and assumes Revenue Operation will follow 6 months later.



# Gold Line Foothill Extension Phase 2B

## Safety

- Project Hours: 1,292,714
- Recordable Injury Rate: 0.3 vs. the National Average: 2.4.

## Updates

- **Overall Project Progress is 72.2% complete**
- Light Rail Track construction completed

## Construction is planned and will continue as follows:

- Sound wall and fencing throughout the project
- 4 new stations: Glendora, San Dimas, La Verne, and Pomona
- LRT train control, OCS poles and wire installation
- Begin local field acceptance testing for TPSS's
- Begin systems integration testing



## Equity

- 25% of the project is located within or adjacent to Equity-Focus Communities.



Light Rail Track Construction Completion



# Airport Metro Connector (AMC) Project

BUDGET				
		Approved LOP*	Previous Period	Current Forecast
		\$898.6M	\$898.6M	\$898.6M
	Variance from Approved LOP:		\$0M (0%)	\$0M (0%) 
	Variance from Revised Budget:			\$0 

\* Approved April 2021 Board

SCHEDULE			Revenue Operation	
	Original	Approved Rebaseline	Previous Period	Current Forecast**
	Fall 2024	N/A	Fall 2024	Fall 2024
	Variance from Original:		+0d (0%)	+0d (0%) 
	Variance from Revised Schedule:			N/A 

\*\* Current Forecast is Metro's June 2023 Schedule Update



September 2023 Construction Committee

Los Angeles County Metropolitan Transportation Authority



On target



Possible problem  
(5-10% variance)



Significant Impact  
(over 10% variance)

# Airport Metro Connector (AMC) Project

## Safety

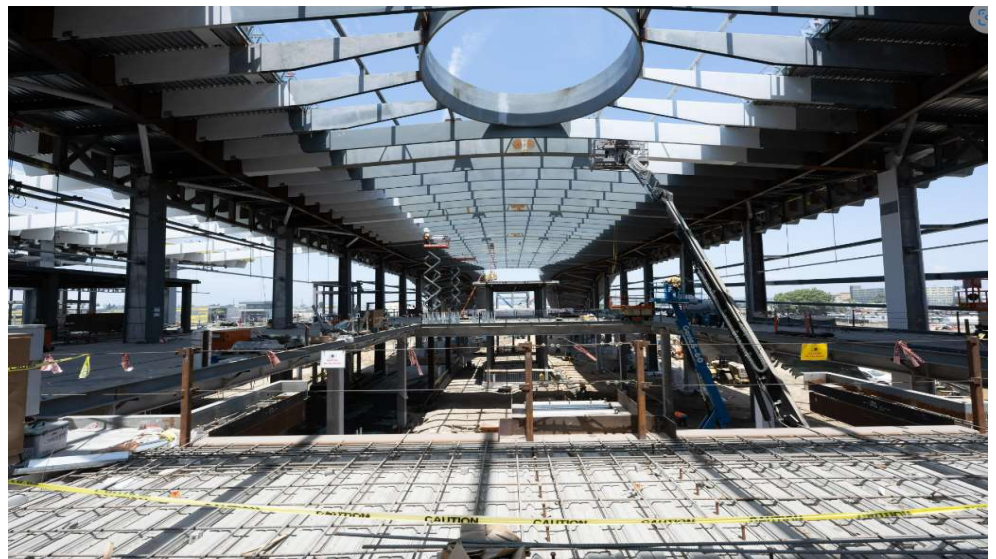
Project Hours: 533,234; Recordable Injury Rate: 1.88 vs. The National Average: 2.4.

## Updates

- **Overall project progress is 70.2% complete.**
- Primary Station Construction at 52.8% completion
  - Steel structure erection completed at LRT, Metro Hub, Bike Hub, and Bus Plaza. Structural steel activities remaining at South Ancillary Building.
  - All mezzanine and intermediate level concrete slabs have been poured.
  - Various activities ongoing at the roof level including metal decking, utility hanger supports, mesh panel supports, dens-deck, roof ribbon and gutter framing, painting, and fire proofing.
  - All track work including Ballasted Tracks and Direct Fixation (DF) tracks are complete

## Equity



- 100% of the project is located within or adjacent to Equity Focus Communities.



September 2023 Construction Committee



Los Angeles County Metropolitan Transportation Authority

# Westside Purple Line Extension – Section 3

BUDGET				
	FFGA	Approved LOP*	Previous Period**	Current Forecast**
	\$3,599 M	\$3,224 M	\$3,277 M	\$3,277 M
	Variance from Approved LOP:		+\$53M (1.6%)	+\$53M (1.6%) 
	Variance from Revised Budget:			\$0 

\* At time of the award of contract – Board Approval February 2019

\*\* Excludes finance costs. In June 2023, the Board approved \$53M LOP increase for Concurrent Non-Full Funding Grant Agreement (Non-FFGA) activities.

SCHEDULE			Revenue Operation	
	Original	Approved Rebaseline	Previous Period	Current Forecast*
	March 2027	N/A	Fall 2027	Fall 2027
	Variance from Original:		+223d (6.65%)	+223d (6.65%) 
	Variance from Revised Schedule:			TBD 

\* Contract schedule is forecasting a slippage to the contractual milestones.

The project team is identifying opportunities to mitigate and is monitoring potential impacts. Staff will provide periodic updates to the Board.



# Westside Purple Line Extension – Section 3

## Safety

Project Hours: 2,774,237 Recordable Injury Rate: 1.44 vs. The National Average: 2.4.

- C1151: Project Hours: 1,496,310; Recordable Injury Rate: 2.67.
- C1152: Project Hours: 1,277,927; Recordable Injury Rate: 0.0.

## Updates

- **Overall Project Progress is 50% complete.**
- **Final design progress is 97% complete.**
- **Tunnels**
  - Both Tunnel Boring Machines (TBMs) remain parked 2 ft behind the Constellation Station west end wall.
  - Excavation and initial lining for 2 out of 14 cross passages have been completed.
- **Westwood/UCLA Station**
  - Excavation is about 37% complete. Walers and struts continue to be installed at levels 2 and 3; 20% of walers and 13% struts have been installed. Utility support work ongoing and approximately 80% complete.
- **Westwood/VA Hospital Station**
  - Excavation is about 35% complete. Walers and struts continue to be installed at levels 1,2, and 3; 40% of walers and 35% of struts have been installed. Shotcrete is 55%, and the tieback installation is 37% complete.
  - Mechanical, Electrical, and Plumbing fit-out inside the VA steam tunnel continues (90% complete).

## Equity

- 1 of 2 stations (50%) are within or adjacent to Equity Focus Communities.





Westwood/UCLA Station: Excavation at Wilshire Blvd





Westwood/VA Station:  
Tiebacks & Shotcrete Installation and Excavation



# I-5 North County Enhancements

BUDGET				
		Approved LOP*	Previous Period	Current Forecast
		\$679.3M	\$679.3M	\$679.3M
	Variance from Approved LOP:		\$0M (0%)	\$0M (0%) 
	Variance from Revised Budget:			\$0 

\* At time of the award of contract - Board Approval (March 2021)

SCHEDULE			Substantial Completion	
	Original	Approved Rebaseline	Previous Period	Current Forecast
	July 2016	N/A	Summer 2026	Summer 2026
	Variance from Original:		+0d (0%)	+0d (0%) 
	Variance from Revised Schedule:			N/A 



# I-5 North County Enhancements

## Safety

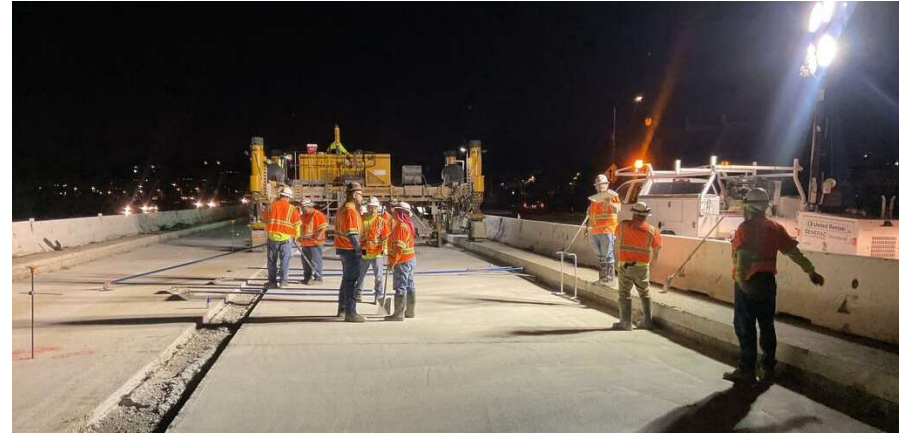
Project Hours: 358,633; Recordable Injury Rate: 1.06 vs. The National Average: 2.4.

## Updates

- **Overall Project progress is 28.06% complete.**
- Construction Stage 1, Phases 1 & 2 continues:
  - Partial Demo/Forming of Footings/Abutments/Bents/Soffit & Stem/Lost Deck on six bridges throughout the project.
  - Construction of approximately 11 Retaining Walls on-going throughout the project.
  - On-going Drainage, Barrier/Roadway Demo, Excavation, and Base Placement.
  - Construction of new Weldon Canyon Bridge
  - Jointed Plain Concrete Paving (JPCP) in the median started
- Project Team continues to coordinate with stakeholders: Caltrans, City of Santa Clarita, Los Angeles County, CHP, NPS, CDFW, SCVWA, and other local stakeholders.

## Equity

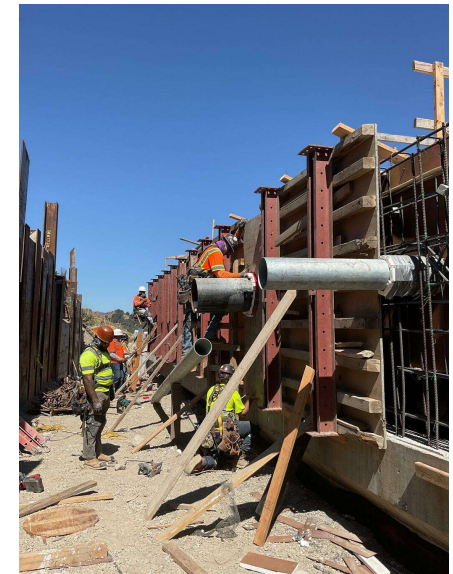
- This project is not located within or adjacent to Equity Focus Communities.



Equipment set-up in preparation for median paving



Pouring concrete at Retaining Wall  
2461



Forming Weldon Canyon Abutment  
#1 backwall







# Projects without Life of Project (LOP) Budget

- **Engineering Projects**
- **105 Express Lanes**
- **G Line BRT Improvements Project**
- **East San Fernando Valley Transit Corridor**
- **North Hollywood to Pasadena BRT Project**



# 105 Express Lanes

BUDGET				
		Approved Budget to Date	Previous Period	Current Forecast
	Pre-Construction	\$119.4 M	\$119.4 M	\$119.4 M
	Project	N/A	\$780M - \$1B	\$780M - \$1B
	Variance from Approved Pre-Construction Budget:		\$0M (0%)	\$0M (0%) 
	Variance from Approved LOP:		N/A	N/A
	Variance from Revised Budget:			N/A 

SCHEDULE			Revenue Operation	
	Original	Approved Rebaseline	Previous Period	Current Forecast
	N/A	N/A	Spring 2028	Spring 2028
	Variance from Original:		+0d (0%)	+0d (0%) 
	Variance from Revised Schedule:		N/A	N/A 



# 105 Express Lanes

## Safety

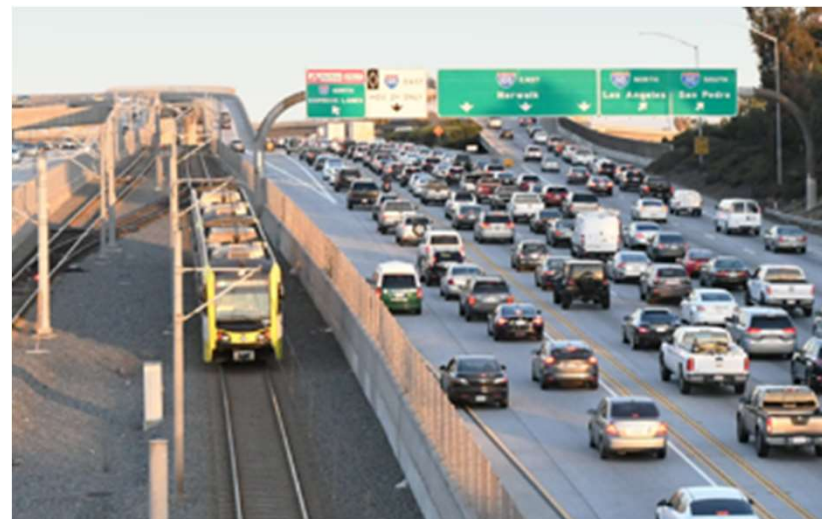
Project Construction Hours: 0; Recordable Injury Rate: N/A vs. The National Average: 2.4.

## Updates

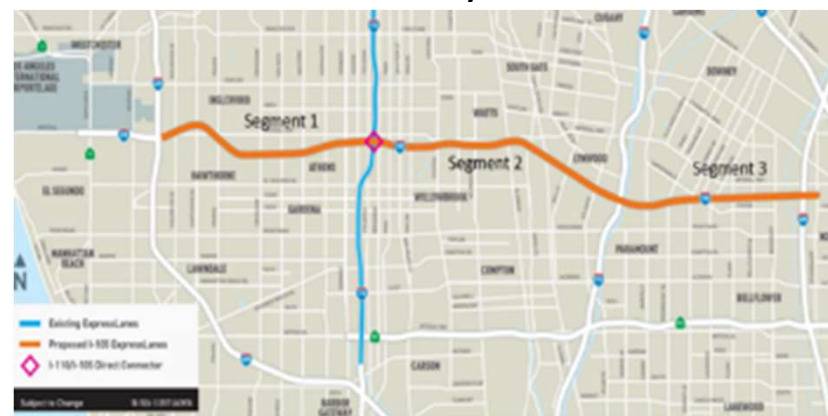
- **Design is 73% complete**
- **Program Management**
  - Time extension request for SB 1 funding allocation submitted to Caltrans
  - Traffic and Revenue Study in progress
- **Design**
  - Segment 1 design is adopting value engineering strategies to reduce construction cost. It will require Caltrans review and approval. This is anticipated by May 2024
  - Segment 2/3 65% design is in progress
- **Construction Manager/General Contractor (CMGC)**
  - Estimate to be revised in August to consider value engineering items to reduce overall cost
  - Interface meetings with WSAB and Metro MOW in progress
- **Roadside Toll Collection System (RTCS)**
  - Requirements Traceability Matrix (RTM) review sessions ongoing
  - I-110/I-105 tolling transition plan drafted
  - Infrastructure Design Document (IDD) updates in progress

## Equity

- 70% of the project is within or adjacent to Equity Focus Communities.



Traffic on 105 Freeway Westbound






The Project Map





September 2023 Construction Committee

# G Line BRT Improvements Project

BUDGET				
		Approved Budget to Date	Previous Period	Current Forecast
	Pre-Construction	\$149.7M*	\$149.7M	\$149.7M
	Project	N/A	\$392-511M	\$843M**
	Variance from Approved Pre-Construction Budget:		\$0M (0%)	\$0M (0%) 
	Variance from Approved LOP:		N/A	N/A 
	Variance from Revised Budget:			\$0M 

\*Approved Budget only includes the Pre-Construction Budget. The project will request LOP budget prior to PDB Contract Phase 2 award. \*\*Based on 30% Independent Cost Estimate (ICE). The project is evaluating value engineering and cost reduction measures to address the budget shortfall to be shared at the November Construction Committee Meeting.

SCHEDULE			Revenue Operation	
	Original	Approved Rebaseline	Previous Period	Current Forecast
	N/A	N/A	N/A	December 2026***
	Variance from Original:		+0d (0%)	+0d (0%) 
	Variance from Revised Schedule:			N/A 

\*\*\*Current Forecast is Phase 2 Substantial Completion milestone, Phase 2 baseline schedule is not yet approved.



November 2023 Construction Committee

Los Angeles County Metropolitan Transportation Authority



On target



Possible problem  
(5-10% variance)



Significant Impact  
(over 10% variance)

# G Line BRT Improvements Project

## Safety

Project Construction Hours: 0; Recordable Injury Rate: N/A vs. National Average: 2.4.

## Updates

### Progressive Design Build Contract

- 60% design for Stormwater Capture and Bike Path Improvements under Metro review. 60% Grade Separations VE design underway
- Phase 1 field investigations complete
- Technology Evaluation and Concept of Operations for Gated Intersections complete. Traffic Impact Analysis near completion
- Fiber investigation complete. Obtained internal buy-in on recommended option to install fiber backbone through B Line tunnels. Developing scope to issue as a Change Order/EWP
- Collaborating on VE and cost reduction opportunities to address affordability issues

### Utility Owner-Performed AURs

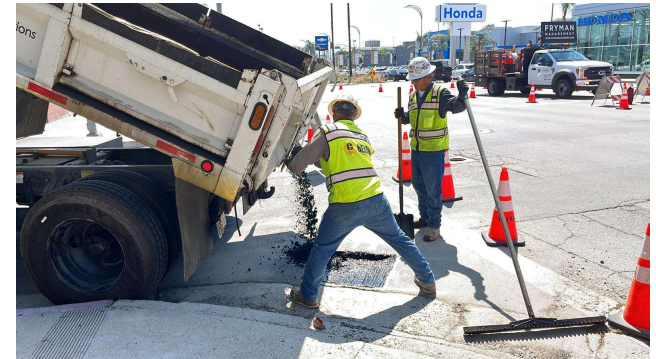
- Sepulveda – removal of poles and overhead wires pending PDB contractor installation of new power service
- Vesper – DWP crews completed cable pulling in August, Charter construction complete and currently pulling cables
- Sylmar – DWP undergrounding complete. Charter planning to vacate line

### Property Acquisitions

- Eight acquisitions underway
- Offers presented to owners between 3/31/22, and 5/24/22
- Board adopted Resolution of Necessity for all properties in Aug '22

## Equity

- 15 of 17 stations (88%) are within or adjacent to Equity Focus Communities.





*Potholing Restoration on Aetna St*





*Sidewalk Panel Restoration on Bessemer St*



# East San Fernando Valley Transit Corridor

BUDGET				
		Approved Budget to Date	Previous Period*	Current Forecast
	Pre-Construction	\$496.9M	\$496.9M	\$496.9M
	Project	N/A	N/A	\$2.81B - \$3.57B
	Variance from Approved Pre-Construction Budget:		\$0M (0%)	\$0M (0%) 
	Variance from Approved LOP:		N/A	N/A
	Variance from Revised Budget:			\$0M 

\*Approved Budget only includes the Pre-Construction Budget.

SCHEDULE			Revenue Operation	
	Original	Approved Rebaseline	Previous Period	Current Forecast**
	N/A	N/A	N/A	2030
	Variance from Original:		+0d (0%)	+0d (0%) 
	Variance from Revised Schedule:			N/A 

\*\* Current schedule forecast reflects Metro's Draft Baseline Schedule. Approval is pending.



# East San Fernando Valley Transit Corridor

## Safety

C1220 W.A. Basic Hours Worked - 9,891; Recordable Injury Rate: 0 vs. National Average: 2.4.

## Updates

- **Design**
  - Developing plats for partial and temporary construction easements
  - Advancing utility composite plans to 60% and AUA 2-8 to 100% complete.
- **Advance Utility Adjustment (AUA) DWP Design 1 – W.A. Basic**
  - Overall contract progress is 53% complete
  - Ongoing nightwork for ductbank installation
- **Progressive Design Build Contract - SFTC**
  - Following deliverables received on August 11: Opinion of Probable Cost, Schedule, draft Validation of Base Design, & draft Value Engineering Plan.
  - First Early Work Package (EWP) proposals will arrive in September
- **Real Estate & Environmental**
  - Appraisals underway for 16 MSF and 3 TPSS parcels. Formal acquisitions will start in the fall.
  - RAMP and Relocation Plan to be presented for Board Approval in October
  - Recommendation for approval of CEQA addendum to the Construction Committee scheduled in September 2023; Section 106 concurrence form FTA/SHPO anticipated in October 2023; NEPA reevaluation approval planned by late November 2023.
- **Light Rail Vehicle (LRV) Acquisition**
  - Initiated procurement of a consulting firm to support LRV procurement.
- **Public Outreach**
  - Continuing outreach in support of utility construction, project tours and planning of construction mitigation programs ongoing
- **Equity**
  - 100% of the project is within or adjacent to Equity Focus Communities.





Installation of 1 of 4 vaults by on Van Nuys Blvd, between Vanowen and Vose.





Duct bank installation in Van Nuys Blvd.



# North Hollywood to Pasadena BRT Project

BUDGET				
		Approved Budget to Date*	Previous Period	Current Forecast
	Project	\$75.8M	N/A	\$263M-386M
	Variance from Approved LOP:		N/A	N/A 
	Variance from Revised Budget:			\$0M 

\* Project will work within the annual budget constraints until LOP is established.

SCHEDULE			Revenue Operation	
	Original	Approved Rebaseline	Previous Period	Current Forecast**
	N/A	N/A	N/A	Summer 2027
	Variance from Original:		+0d (0%)	+0d (0%) 
	Variance from Revised Schedule:			N/A 

\*\* Current Forecast is Metro's Internal Schedule, Baseline schedule is not yet approved at time of update.



# North Hollywood to Pasadena BRT Project

## Safety

- Project Construction Hours: 0; Recordable Injury Rate: N/A vs. National Average: 2.4.

## Updates

- EIR Approved April 2022
- PMSS RFP, released July 2023 response Due September 2023
- A&E RFP, planned release date September 2023
- Preparing CM/GC RFP, planned release date October 2023

## Equity

- 60% of the project is within or adjacent to Equity Focus Communities



*Project Map*



*View of Vineland Ave / Lankershim Blvd*







# Operational Projects

- **North San Fernando Transit Corridor Project**



# NSFV Transit Corridor Project

BUDGET				
		Approved LOP	Previous Period	Current Forecast
		\$180M	\$180M	\$180M
	Variance from Approved LOP:		\$0M (0%)	\$0M (0%) 
	Variance from Revised Budget:			\$0 

SCHEDULE			Substantial Completion	
	Original	Approved Rebaseline	Previous Period	Current Forecast*
	Summer 2025	N/A	N/A	Summer 2026
	Variance from Original:		+0d (0%)	+0d (0%) 
	Variance from Revised Schedule:			N/A 

*\*Project elements delivered incrementally. Likely, last elements to be completed are expected to be ZEB and charging*



# NSFV Transit Corridor Project

## Safety

Project Construction Hours: 0; Recordable Injury Rate: N/A vs. The National Average: 2.4.

## Updates

- **Roscoe BI Bus Priority Lanes**
  - 30% design
  - Construction to begin in Q3 FY24
- **All Door Boarding**
  - 200 pilot BMVs delivered for testing in Q3 FY24
  - 2,900 BMVs for delivery and install by end of FY25 (includes 330 for NSFV Project)
- **Bus Bulbs (82 locations)**
  - Preparing scope for design contractor to be completed by end of Q2 FY24
  - Construction to begin FY25
- **5 Key Transfer Locations**
  - Preparing scope for design contractor to be completed by end of Q2 FY24
  - Construction to begin FY25
- **Bus Shelters**
  - Construction and installation agreement for 393 shelters executed 10/2023
  - Installations expected to begin Q1 FY25
- **Transit Signal Priority (7 Corridors)**
  - 35% design
  - Installation to begin Q1 FY25
  - Completion by Q4 FY25
- **75 Battery Electric Buses + Charging**
  - Included under current ZEB procurement to be issued by Q2 FY24
- **Service Frequency Improvements on Lines 152 (Roscoe) and 166 (Nordhoff)**
  - To be implemented following completion of Roscoe BI Bus Priority Lanes

## Equity

- Majority of the project improvements are located within or adjacent to Equity Focus Communities.



*Rendering of an improved stop on Nordhoff/Lindley*



November 2023 Measure M Committee



# **Measure M Independent Taxpayer Oversight Committee Transit Projects Update**

Allison Yoh, Executive Officer  
December 6, 2023



# Measure M Transit Projects



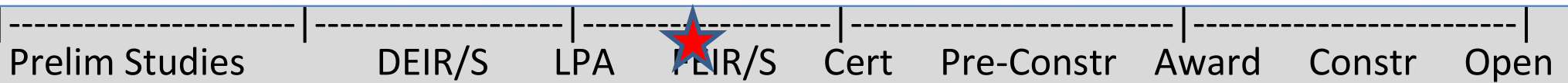
## > Major Pillar Projects

- (1) West Santa Ana Branch
- (2) C (Green) Line Extension to Torrance
- (3) Sepulveda Transit Corridor
- (4) Eastside Transit Corridor Phase 2

## > Other Projects in Planning

- Vermont Transit Corridor
- K Line Northern Extension

# West Santa Ana Branch Transit Corridor



Current Phase	Most Recent Cost Estimate
EIR/EIS	\$7.1B (YOES) - IOS

## Recent Activities

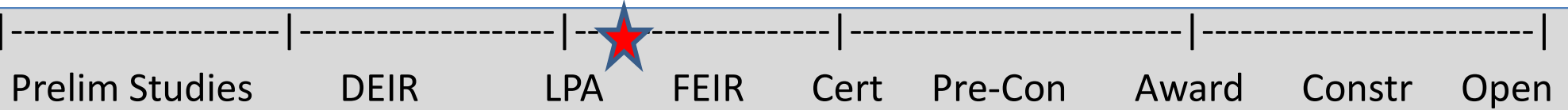
- October 4: Submitted First Admin Draft Final EIS/EIR to FTA & USACE for 25-day review
- All 10 Master Cooperative Agreements (MCAs) executed with corridor cities
- Continuing to work with UPRR/Ports/ACTA on final MOU (legal review and sign-off)
- Two procurements underway: Program Management Support Services, Advanced Design (in blackout)

## Next Actions

- Winter 2023/2024: MOU w. Ports/ UPRR/ACTA
- Fall 2023 (tent.): Board action on contract awards
- Spring 2024 (tent.): Board certification/action on FEIR/FEIS
- Summer 2024 (tent.): FTA Record of Decision



# Eastside Transit Corridor Phase 2



## Current Phase

EIR/NEPA TBD

## Most Recent Cost Estimate

\$7.9B (YOES, 2031\$) – IOS

## Recent Activities

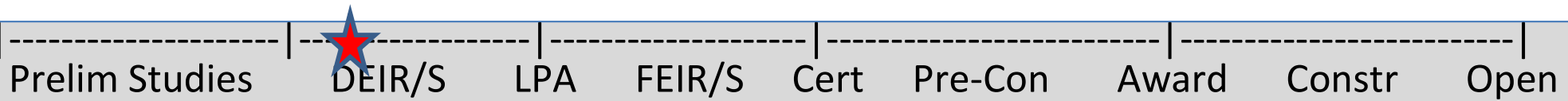
- FLM Technical Walk Audits completed in coordination with County, City Staff, & CBO Partners
- Community rail tours completed
  - Oct. 18 (Elected/agencies)
  - Nov. 4 (CBO/key stakeholders),
  - Nov. 18 (Public Tour #1)
  - Dec. 2 (Public Tour #2)
- Evaluation of Project Delivery Method
- Continuing discussion with FTA re: appropriate level documentation based on review of CEQA document
- Preparing for future entry into Project Development phase
- Cooperative Agreement template ready for distribution to corridor cities



## Next Actions

- Final EIR per CEQA anticipated Winter 2023/2024, exploring early works advanced construction

# Sepulveda Transit Corridor



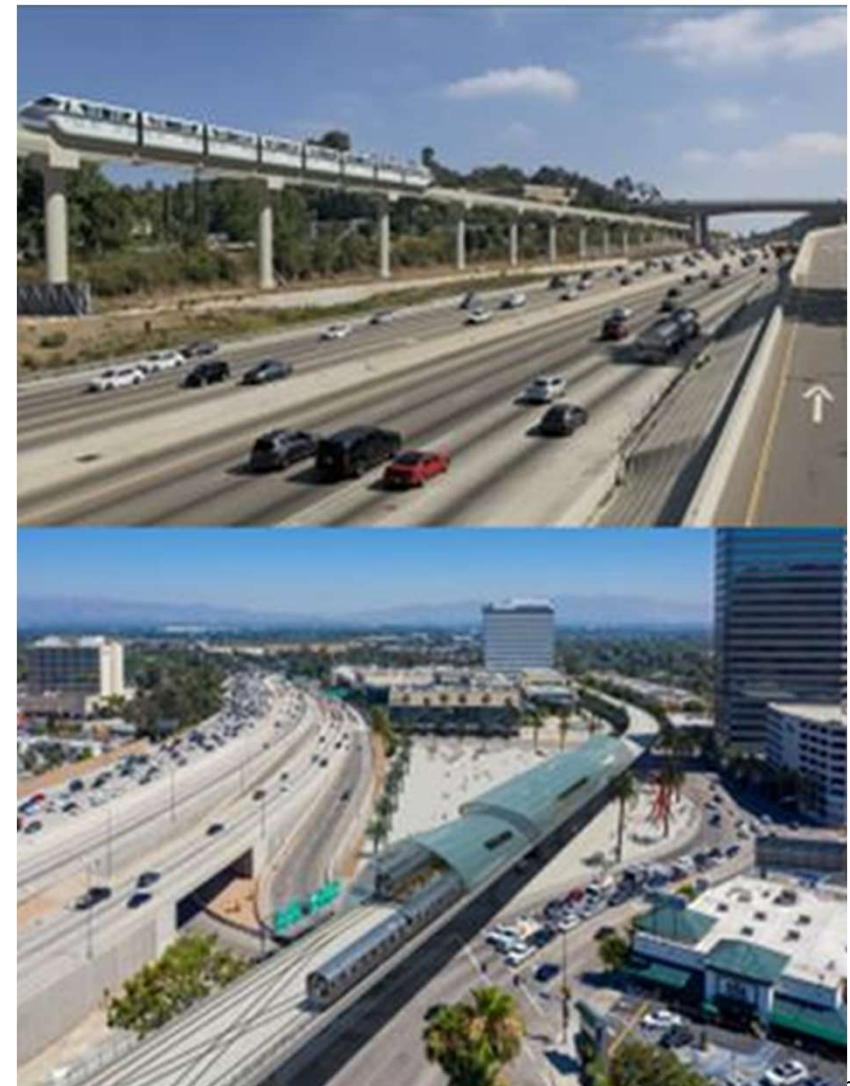
Current Phase	Most Recent Cost Estimate
EIR	\$5.7B (2015\$)

## Recent Activities

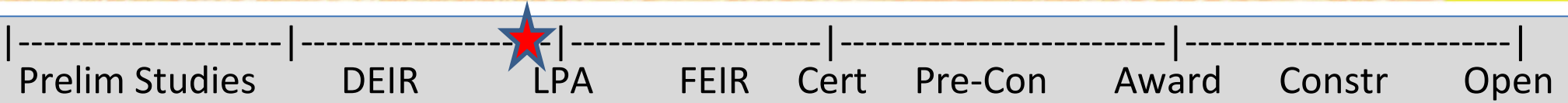
- Fall community meetings re: travel times and boardings
  - 10/24 (Westwood), 10/28 (Van Nuys)
  - 11/01 (Virtual)
  - In-person meetings included 405 ExpressLanes & Traffic Reduction Study
- Ongoing geotechnical/seismic fieldwork
- Continued engagement with adjacent projects and with third party agencies
- Planning and Environmental Linkages (PEL) meetings with agencies

## Next Actions

- Continue to develop designs and prepare environmental technical studies



# C (Green) Line Extension to Torrance



## Current Phase

EIR

## Most Recent Cost Estimate

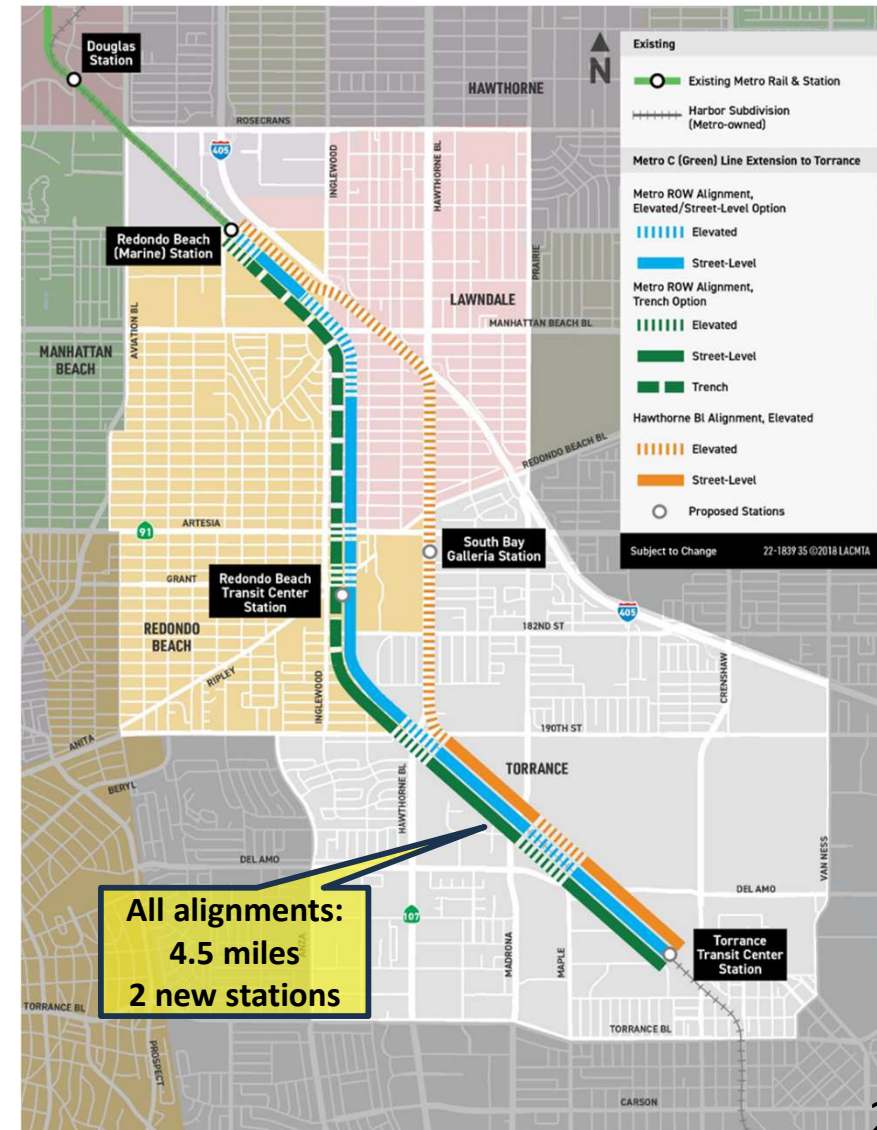
\$891M (2015\$)

## Recent Activities

- Provided update at September Metro Board Committees: Planning & Programming, Executive Management Committee
- Postponed selection of Preferred Alternative to allow SD-2 additional time for community engagement
- Continuing to support community engagement efforts

## Next Actions

- Continue to identify and develop staff recommendation of Preferred Alternative based on project objectives, findings, community concerns
- Staff recommendation on LPA selection in 2024



# Vermont Transit Corridor



## Current Phase

Preliminary Studies

## Most Recent Cost Estimate

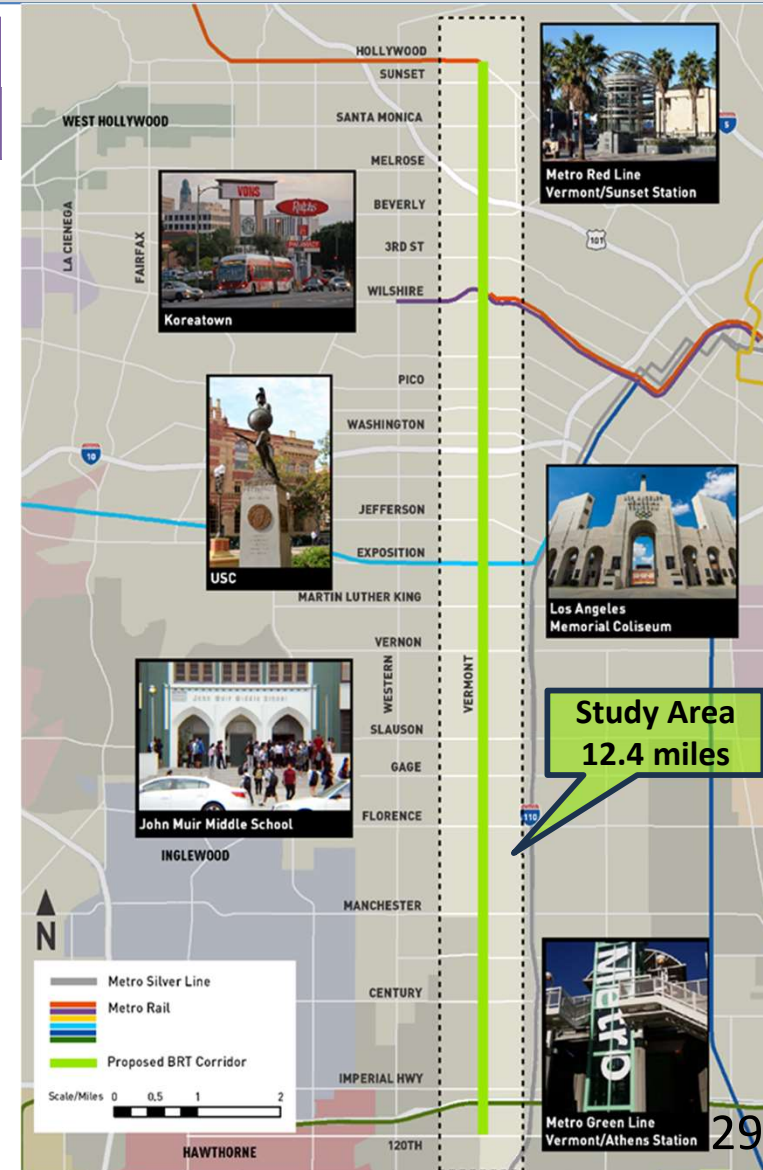
\$425M (2015\$)

## Recent Activities

- Board approved contract for planning & environmental study (Sept 2023)
- Active procurement underway for communications/ outreach services (blackout)
- Board update provided on near-term bus improvements (Operations, Safety & Customer Experience committee in Sept 2023)

## Next Actions

- Commence planning and environmental study (BRT)
- Award contract for communications/ outreach services; community engagement for near-term bus and longer-term BRT improvements
- Commence designs for BRT in coordination with CBO/outreach efforts



# K Line (Crenshaw) Northern Extension



Current Phase

Most Recent Cost Estimate

EIR

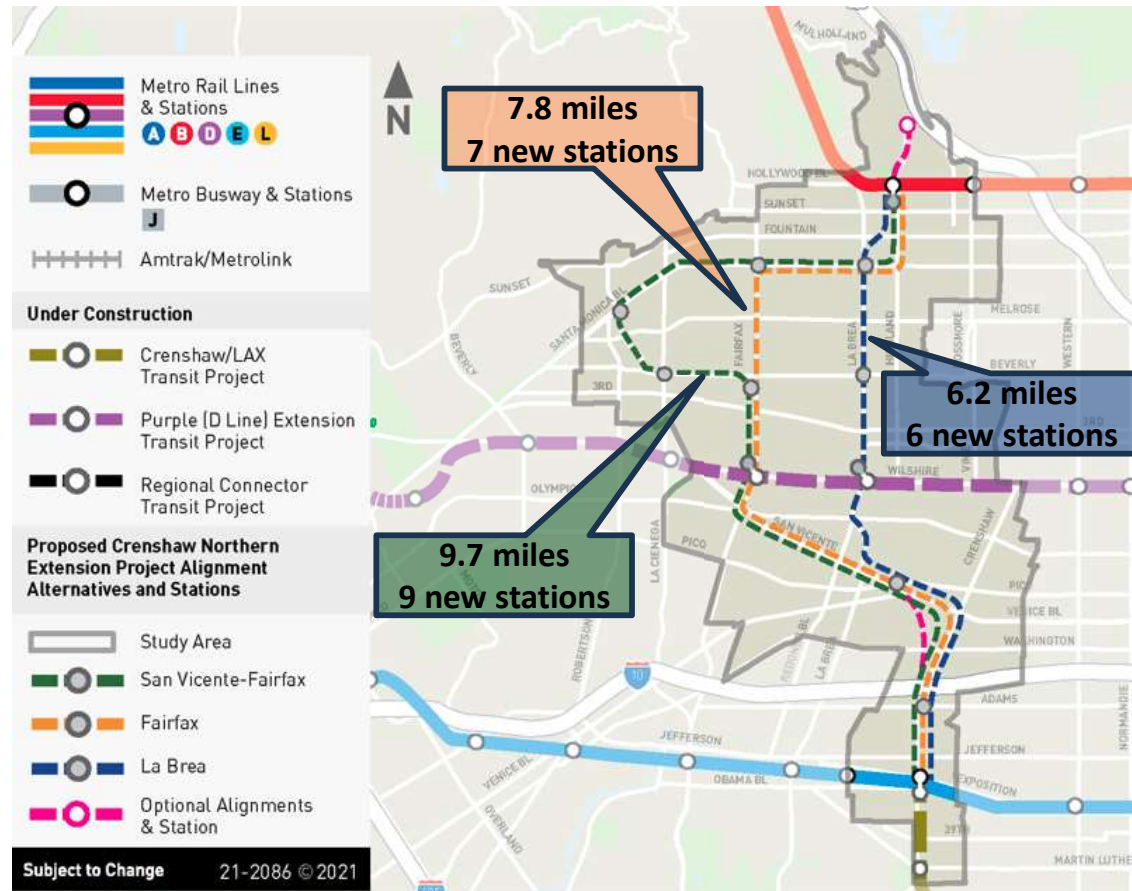
\$2.24B (2015\$)

## Recent Activities

- Held three community meetings to share project update and ridership estimates (September)
- Advancing environmental analysis under CEQA
- Refining DEIR engineering concepts for three alternatives

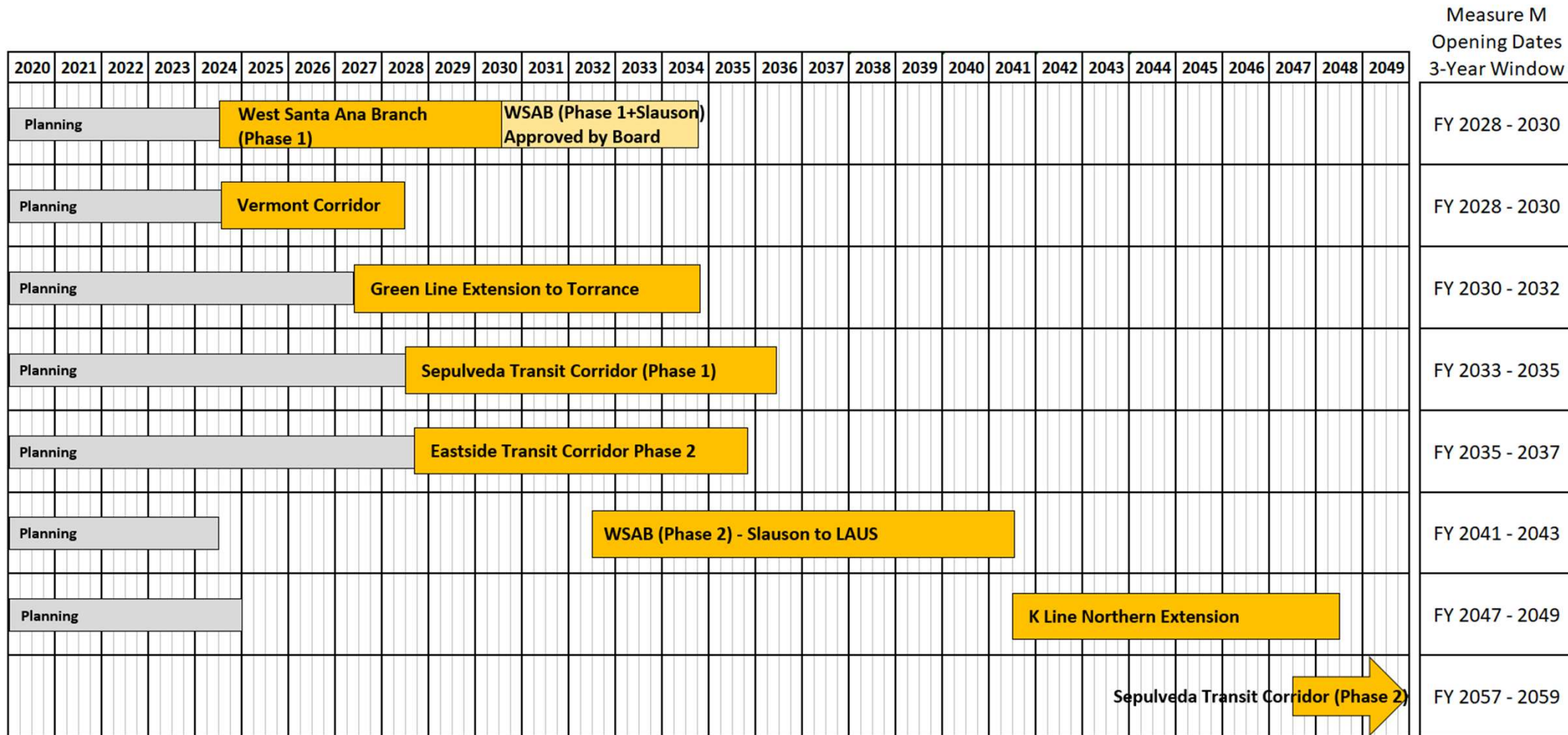
## Next Actions

- Finalize technical reports and prepare Draft EIR
- Continue to identify cost, phasing strategy and funding opportunities



# Measure M Expenditure Plan

## Groundbreaking to Opening Dates





# **Measure M Independent Taxpayer Oversight Committee**

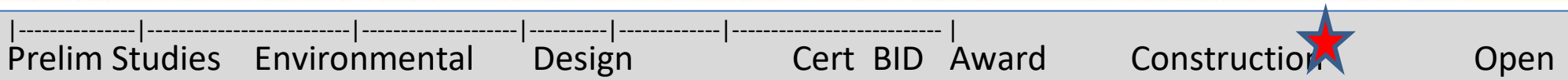
## **Complete Streets & Highway Project Updates**

**Nelli Derderian**  
Director, Finance & Administration

December 06, 2023



## SR-71 Gap from I-10 to Rio Rancho Road (Southern Segment)



Current Phase	Phase Budget	Phase Spent To Date
Construction	\$148.10M	\$61.7M

## Purpose and Scope

Expenditures as of 10/31/23

- **Caltrans-managed** project adding one HOV lane and one mixed-flow lane between Mission Blvd and San Bernardino County Line.

## Multimodal Elements

- N/A

## Status

- Construction is 45% complete with anticipated completion by end of 2024.
- TCEP\* funding 20-month time extension to be requested to cover construction schedule delays.

## Challenges

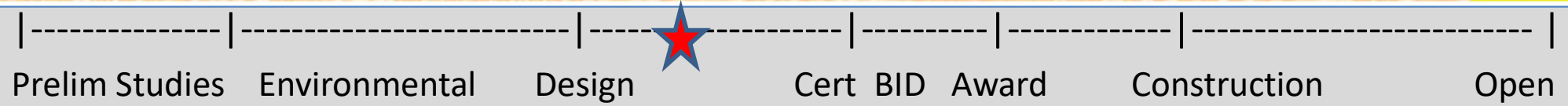
- Construction schedule delays related to soil cohesion testing needed for soil nail retaining wall construction.
- Resolving any outstanding claims.



\* TCEP – Trade Corridor Enhancement Program State grant



# SR-71 Gap from I-10 to Rio Rancho Road (Northern Segment)



Current Phase	Phase Budget	Phase Spent To Date
Design	\$40.40M	\$23.0M

Expenditures as of 10/31/23

## Purpose and Scope

- **Caltrans-managed** project to add 1 HOV lane in each direction and upgrade segment from an expressway to a freeway with 2 mixed flow lanes.

## Multimodal Elements

- Upgrade current pedestrian bridge to comply with current ADA requirements.
- Adding HOV lanes will facilitate carpools and vanpools and encourage transit (bus) usage.

## Status

- Environmental Document completed in May 2013.
- Right of Way acquisition is complete except for railroad easements.
- Design phase projected to finish in Summer 2025.
- Target construction start date in Spring 2026.
- MDPG\* grant application submitted in August 2023 to close the construction funding gap.
- Expenditures to date are from State and Federal funds.

## Challenges

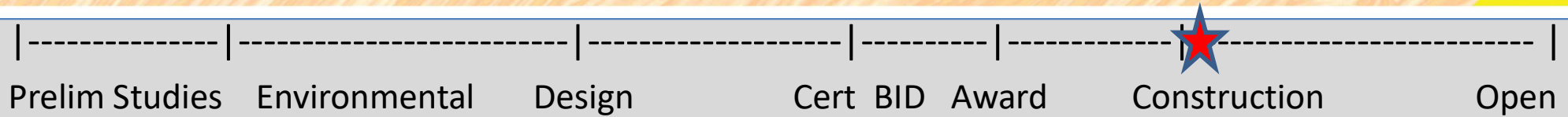
- Utility and railroad coordination could delay schedule.
- Construction funding shortfall of more than \$114 million expected.



\* MDPG – Multimodal Discretionary Project Grant



# SR-57/SR-60 Interchange Improvements



Current Phase	Phase Budget	Phase Spent To Date
Construction	\$296.4M	\$11.1M

Expenditures as of 10/30/23

## Purpose and Scope

- Major operational/safety improvements including grade-separation of Grand Ave eastbound off-ramp.
- Construction led by the San Gabriel Valley COG** with Metro and Caltrans oversight.

## Multimodal Elements

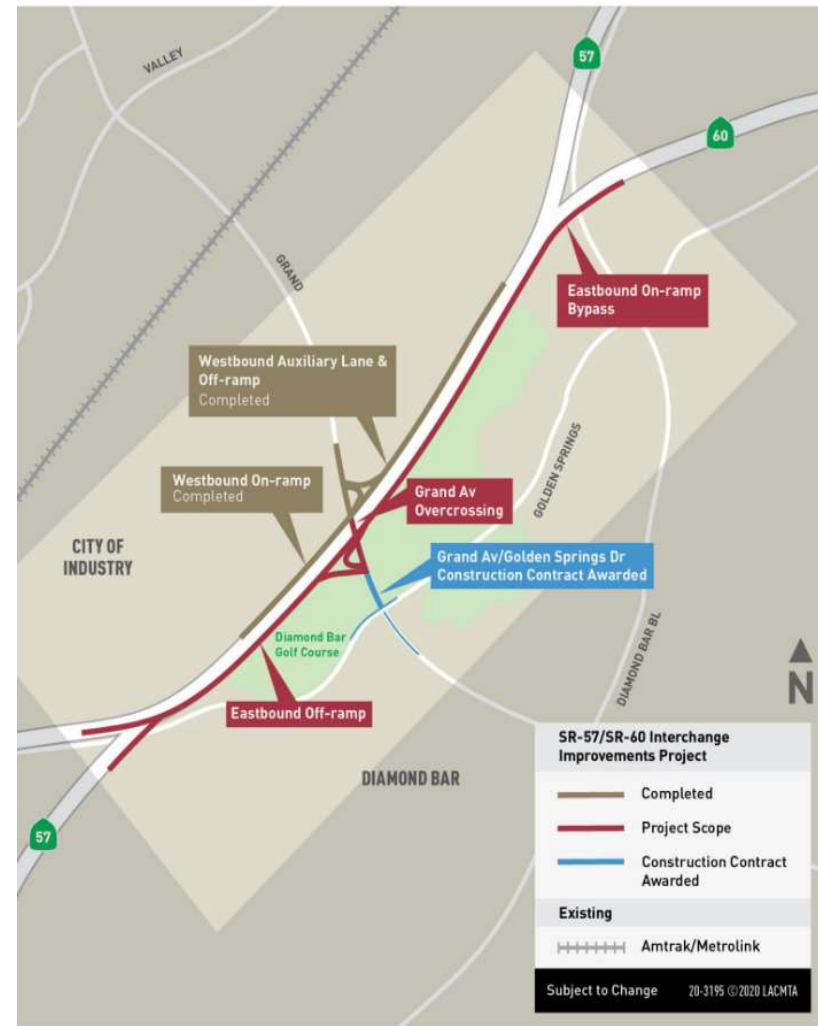
- Project includes improvements to local bridge, sidewalk and bicycle facilities.

## Status

- Project consists of \$217M in TCEP\* and \$27M in INFRA\*\* construction funds.
- Property mitigation activity is progressing as scheduled.
- Construction completion projected in Summer 2028.

## Challenges

- Closing final cost negotiations on required Right of Way.



\* TCEP – Trade Corridor Enhancement Program State grant  
\*\* INFRA – Infrastructure for Rebuilding America Federal grant

# I-405 South Bay Curve Improvements

## I-110 to Wilmington – Auxiliary Lanes



## Purpose and Scope

- Improve freeway operations and safety.
- Spans across both directions of I-405 through construction of auxiliary lanes between on- and off-ramps to improve merging and diverging vehicle movements.
- **Metro leading environmental phase.**

## Multimodal Elements

- Project will include ramp termini improvements (high visibility crosswalks, leading pedestrian intervals, bike boxes, etc.).
- May include other pedestrian/bicycle and transit stop improvements in collaboration with City of Carson.

## Status

- Environmental phase started in September 2023 and is projected to end in Fall 2026.
- Project being scoped in collaboration with City of Carson and Caltrans in accordance with Objectives for Multi-Modal Highway Investment.

## Challenges

- Construction phase is not fully funded.



# I-405 South Bay Curve Improvements

## Southbound Auxiliary Lanes; I-105 to Artesia



### Purpose and Scope

- Improve safety and operations by reducing freeway conflicts at high congestion on/off ramp locations.
- Northbound and Southbound Auxiliary lane improvements between freeway on/off ramps within Caltrans Right of Way.
- **Metro leading design phase.**

### Multimodal Elements

- High visibility crosswalks;
- Pedestrian flashing beacons;
- Pedestrian and cyclist signage.

### Status

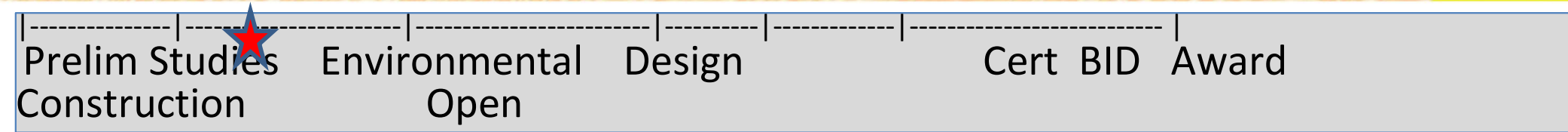
- Environmental Document completed in June 2020.
- 65% design plans submitted to Caltrans in Spring 2023.
- Anticipating 95% design submittal by Spring 2024.

### Challenges

- Construction phase is not fully funded.



# SR-14 Improvements – North County



## Purpose and Scope

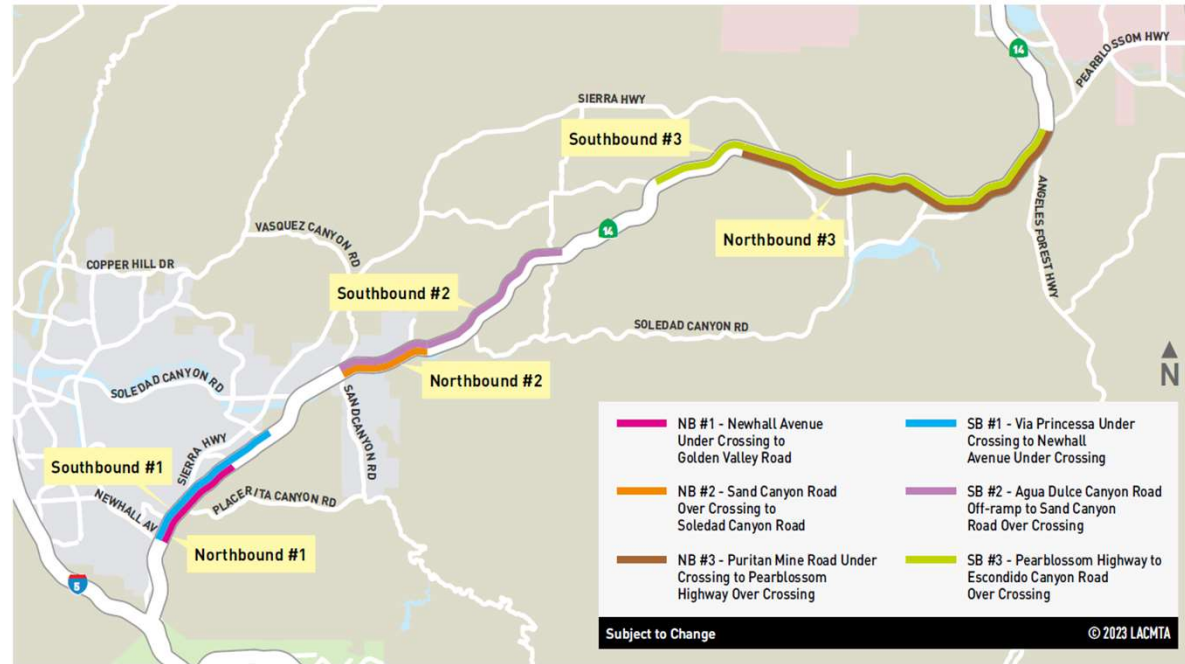
- Project Limits - Newhall Ave undercrossing to Pearblossom Highway.
- Address traffic safety concerns (higher than state average incident rates).
- Improvements focused on safety, address geometric deficiencies, address VMT goals, and minimizing impacts to human, physical and biological environments.
- **Metro leading environmental phase.**

## Multimodal Elements

- Environmental document will evaluate a broad range of alternatives that will be inclusive of multimodal elements (e.g., commuter rail, bike, ped improvements).

## Status

- Environmental phase started in September 2023 and is projected to end in Fall 2026.



## Challenges

- VMT analysis to be conducted.

