



Board Report

File #: 2024-0515, **File Type:** Oral Report / Presentation

Agenda Number: 4.

**MEASURE M INDEPENDENT TAXPAYER OVERSIGHT COMMITTEE
OCTOBER 3, 2024**

SUBJECT: ORAL REPORT ON LOCAL RETURN

ACTION: ORAL REPORT

RECOMMENDATION

RECEIVE oral report on Local Return programmed revenues and uses for Los Angeles County jurisdictions to support discussion on the effective and efficient use of funds.

ISSUE

To support the discussion on Local Return revenue amounts programmed and usage by each Los Angeles County local jurisdiction. This report provides the required quarterly update and presents the status of Local Return funding in the first quarter of fiscal year 2025 (FY25). This includes audit updates, a summary of Measure M fund uses within the first quarter, and updates on current points of concern with Metro’s Board of Directors.

EQUITY PLATFORM

Under Board-adopted guidelines, this item enables the programming of funds to recipients to support the implementation of various transportation projects and improvements throughout the region. Through the process of public input, the engagement during local decision making and project implementation, cities and unincorporated areas of the county are empowered to appropriately and equitably address the needs of their communities.

ATTACHMENTS

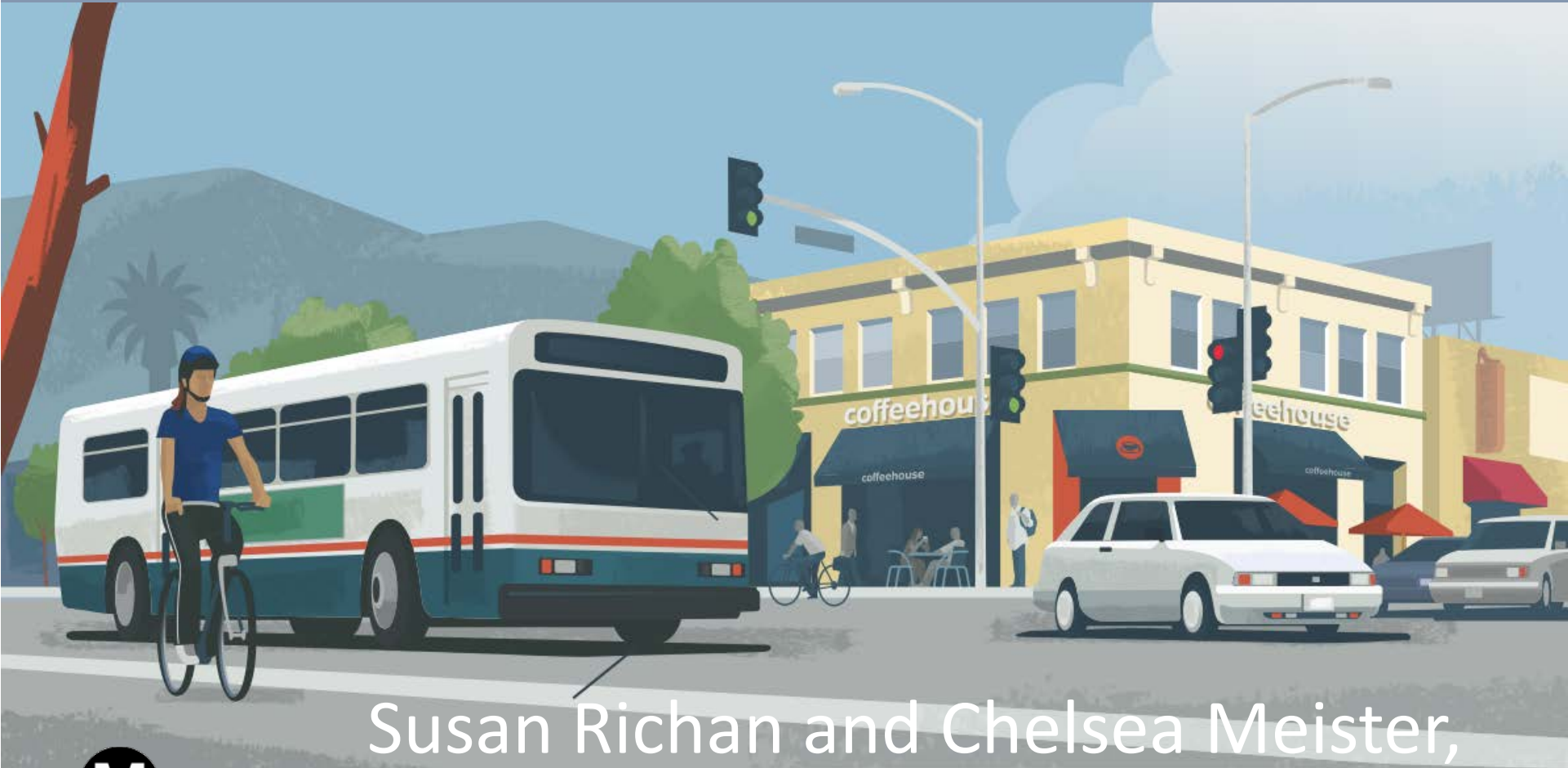
Attachment A - Local Return Presentation

Prepared by: Chelsea Meister, Manager, Transp. Planning, Local Programming, (213) 922-5638
Susan Richan, Director, Local Programming, (213) 922-3017
Cosette Stark, DEO, Local Programming, (213) 922-2822

Reviewed by: Nalini Ahuja, Chief Financial Officer, (213) 922-3088

Measure M Local Return

October 2024 update



Susan Richan and Chelsea Meister,
Local Programming

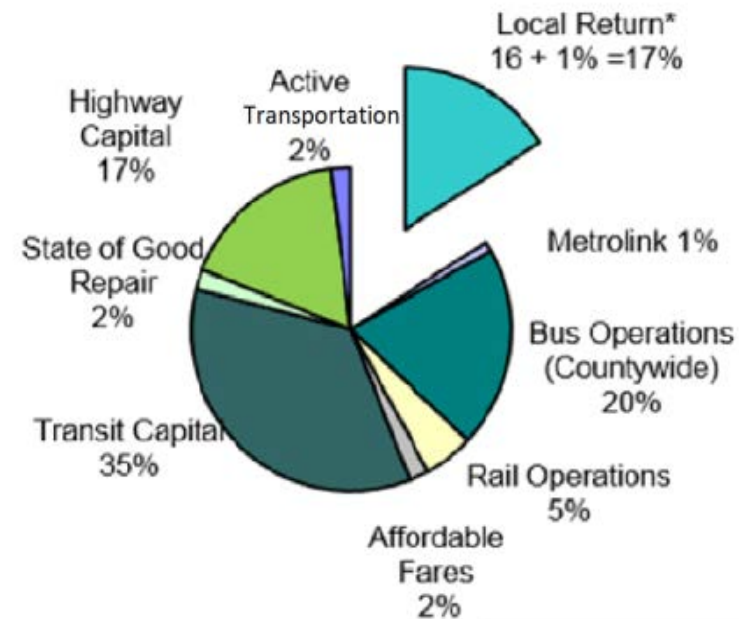


Local Return (LR) – Measure M

- Measure M (approved in 2016 – funding started FY18)
 - 17% LR share (16% share plus 1% of the 1.5% off the top)
- Requires Assurances and Understanding agreement
- Jurisdictions are audited annually for compliance to Measure M
Data from the LRMS
(Formerly on the Form M-One and Form M-Two)

Due dates are the same for all LR:
August 1 (budget) and
October 15th (expenditures)

MEASURE M



*Local Return receives 1% from the 1.5% of the "off the top" Administration

Local Return – Updates

There was a Local Return Workshop (for the Consolidated Audit) held Tuesday, May 14, 2024. This was to go over the FY2023-24 audit requirements and review Local Return procedures.

Cities were notified that the close of the fiscal year was June 30, 2024, and that they needed to have all of their projects approved on or by that date. Broadcast emails have been sent to cities regarding other due dates and potential lapsing dates.

The FY2023-24 Audit begins in October 2024 and continues until December 31, 2024

In March 2023, Metro Board approved the Bus Shelters Motion directing staff to investigate Local Return investment into bus stops, among other efforts.

- To date 4 cities have used Measure M Local Return funds for bus stops
- Most cities use other local return fund sources for bus stop improvements
- This will inform planned Quality of Life Scorecard which will assess how pass-through funding supports local infrastructure including bus stops

FY25 Measure M Local Return Fund Usage

As of 9/4/2024

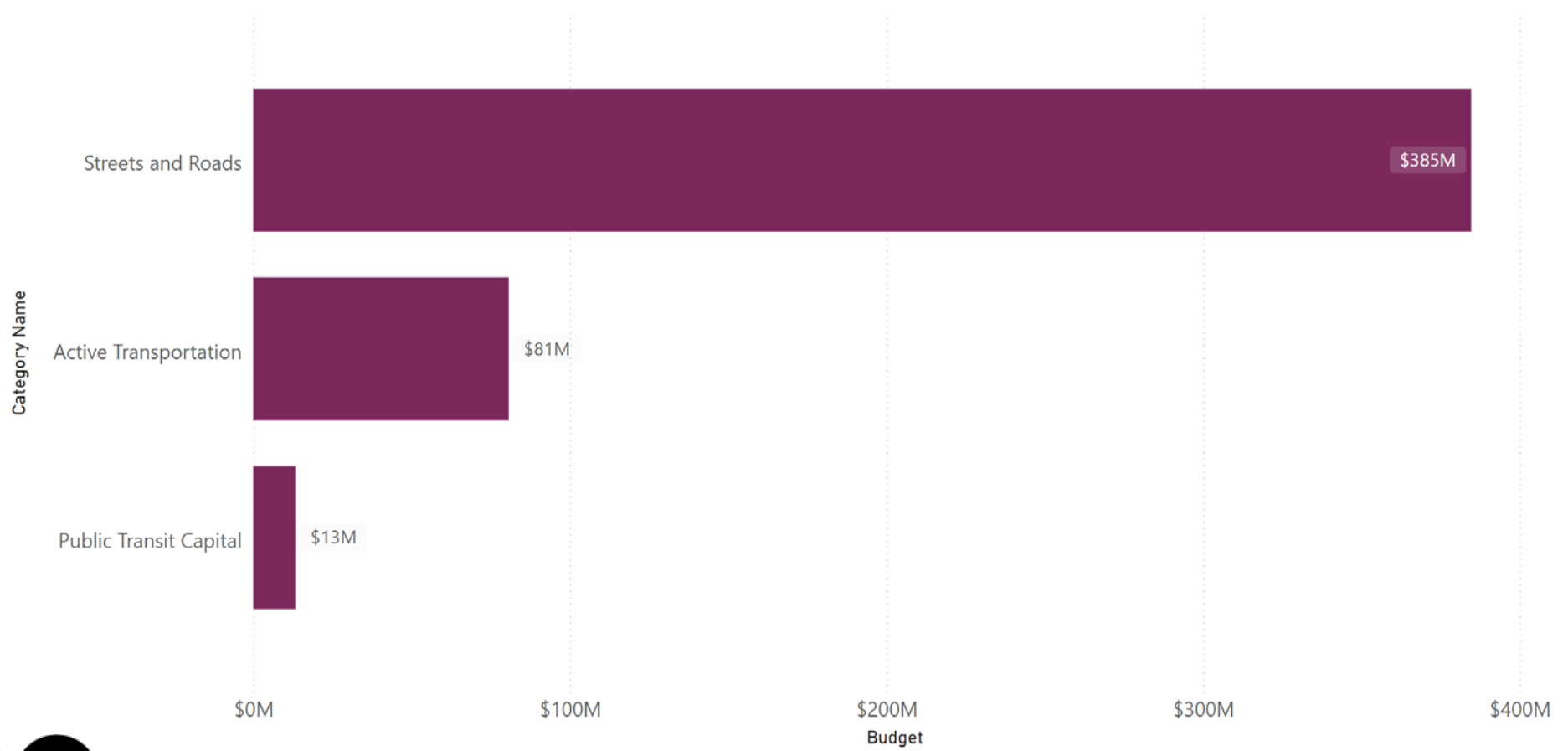
Approved Budget 2025

\$479M

Total No of Projects in 2025

554

Budget by Category Name



END OF FY24 TOTAL APPROVAL AMOUNTS AND PROJECTS



THANK YOU!

Questions?

Susan Richan

richans@metro.net

(213) 922-3017

Chelsea Meister

meisterc@metro.net

(213) 922-5638

